

Postgraduate Diploma

Animal Welfare in Poultry, Beef Cattle and Pig Farming





Postgraduate Diploma

Animal Welfare in Poultry, Beef Cattle and Pig Farming

- » Modality: online
- » Duration: 6 months
- » Certificate: TECH Global University
- » Credits: 24 ECTS
- » Schedule: at your own pace
- » Exams: online

Website: www.techtute.com/us/veterinary-medicine/postgraduate-diploma/postgraduate-diploma-animal-welfare-poultry-beef-cattle-pig-farming

Index

01

Introduction

p. 4

02

Objectives

p. 8

03

Course Management

p. 12

04

Structure and Content

p. 16

05

Methodology

p. 22

06

Certificate

p. 30

01

Introduction

The recognition of animals as sentient beings has led to the need for livestock production activities to avoid gratuitous pain or suffering to production animals.

This program addresses the main animal welfare issues in the three main species of livestock production, which are highly intensified production systems.





“

*A complete and total update on animal welfare
with the most complete and effective online
training program on the market”*

The Postgraduate Diploma in Animal Welfare in Poultry, Beef Cattle and Pig Farming is a new and up-to-date program that arises from the growing demand among veterinary professionals for specialized knowledge in animal welfare to minimize animal suffering, since, nowadays, consumers demand not only healthier and safer food, but also food obtained through practices that ensure animal protection and welfare.

It addresses the concept of Animal Welfare, its evolution and applied ethology, one of the main welfare problems in all animal facilities.

It also covers animal ethics or bioethics as a differentiating element with respect to other similar training courses. Since this topic is usually included in philosophy programs, it is usually addressed very superficially in health sciences. This highly relevant ethical aspect will be extensively discussed in depth throughout this Postgraduate Diploma in Animal Welfare in Poultry, Beef Cattle and Pig Farming.

The program will help veterinary professionals acquire specialized and updated training in the field of animal welfare, which is increasingly demanded by society, as conflicts between animal advocates and those in food production are the order of the day.

This **Postgraduate Diploma in Animal Welfare in Poultry, Beef Cattle and Pig Farming** contains the most complete and up-to-date scientific program on the market. The most important features include:

- ♦ The latest technology in online teaching software
- ♦ A highly visual teaching system, supported by graphic and schematic contents that are easy to assimilate and understand
- ♦ Practical cases presented by practising experts
- ♦ State-of-the-art interactive video systems
- ♦ Teaching supported by telepractice
- ♦ Continuous updating and recycling systems
- ♦ Autonomous learning: full compatibility with other occupations
- ♦ Practical exercises for self-evaluation and learning verification
- ♦ Support groups and educational synergies: questions to the expert, debate and knowledge forums
- ♦ Communication with the teacher and individual reflection work
- ♦ Content that is accessible from any fixed or portable device with an Internet connection
- ♦ Supplementary documentation databases are permanently available, even after finishing the course



Join the elite, with this highly effective program and open new paths to help you advance in your professional progress"

“

A complete program that will allow you to acquire the most advanced knowledge in all the areas of intervention of a specialized veterinarian"

Our teaching staff is made up of professionals from different fields related to this specialty. That way we are sure to offer the training update we intend to provide. A multidisciplinary team of professionals trained and experienced in different environments, who will develop the theoretical knowledge in an efficient way, but, above all, will put at your service the practical knowledge derived from their own experience: one of the differential qualities of this training.

The efficiency of the methodological design of this Professional Master's Degree, enhances the student's understanding of the subject. Developed by a multidisciplinary team of e-learning experts, it integrates the latest advances in educational technology. This way, you will be able to study with a range of comfortable and versatile multimedia tools that will give you the operability you need in your training.

The design of this program is based on Problem-Based Learning: an approach that conceives learning as a highly practical process. To achieve this remotely, we will use telepractice learning: with the help of an innovative interactive video system, and learning from an expert, you will be able to acquire the knowledge as if you were actually dealing with the scenario you are learning about. A concept that will allow you to integrate and fix learning in a more realistic and permanent way.

With a methodological design based on proven teaching techniques, this innovative program will take you through different teaching approaches to allow you to learn in a dynamic and effective way.

With the experience of working professionals and the analysis of real success stories, in a high-impact training approach.



02 Objectives

Our objective is to train highly qualified professionals for the working An objective that is complemented, moreover, in a global manner, by promoting human development that lays the foundations for a better society. This objective is materialized in helping professionals to reach a much higher level of competence and control. A goal that, in just a few months, you will be able to achieve, with a high intensity and effective training program.





“

If your objective is to broaden your skill set to pave new ways toward success and development, this is the course for you: A training that aspires to excellence”



General Objectives

- Analyze the concept of animal welfare
- Examine human involvement in animal welfare
- Establish animal welfare assessment systems
- Provide a foundation of knowledge of applied animal ethology
- Examine ethology as a fundamental item in animal welfare
- Analyze the ethological basis for the main species of interest
- Compile all the information on implementing animal welfare regulations
- Define all the links involved in animal protection regulations
- Analyze the information on animal protection at the international level
- Analyze and compile all information on welfare in pig farms
- Identify animal welfare issues in dairy and beef cattle production
- Examine poultry establishments for both egg and meat production from an animal welfare standpoint



A path to achieve training and professional growth that will propel you towards a greater level of competitiveness in the employment market"





Specific Objectives

Module 1. Animal Welfare. Concepts and Evolution

- ♦ Examine the concept of animal welfare in all its implications
- ♦ Analyze the physiological stress response in animals and its quantification
- ♦ Develop the concepts of stress and acute and chronic stress responses
- ♦ Fundamentalize the concepts of "eustress" and "distress"
- ♦ Determine the animal welfare implications in this stress response
- ♦ Develop the concept of freedoms and needs to understand animal welfare
- ♦ Examine the concept of animal welfare assessment
- ♦ Specify current animal welfare assessment systems

Module 2. Applied Animal Ethology

- ♦ Develop the concept of applied animal ethology
- ♦ Establish the principles of learning and motivation in animals
- ♦ Identify the role of domestication in the development of current behaviors
- ♦ Prove the importance of the study of ethology in assessing animal welfare
- ♦ Identify normal and abnormal animal behavior patterns
- ♦ Examine enrichment systems in wild and domestic animals and propose them on farms or other facilities

Module 3. National and International Animal Protection Legislation

- ♦ Analyze the development of animal protection regulations in the European Union
- ♦ Develop animal protection regulations in livestock farms
- ♦ Detail animal protection regulations in transport and slaughtering
- ♦ Examine animal protection regulations for teaching and research purposes
- ♦ Identify international actors in the development of animal protection legislation
- ♦ Present animal welfare regulations in countries outside the European Union

Module 4. Livestock Establishments. Welfare in Swine, Beef Cattle and Poultry

- ♦ Analyze welfare problems in swine breeding establishments
- ♦ Examine welfare problems in the management of sows and piglets during lactation and rearing
- ♦ Analyze welfare during the fattening of pigs
- ♦ Examine cattle facilities from a welfare standpoint
- ♦ Determine welfare in dairy cattle facilities and during calf fattening
- ♦ Analyze welfare in laying hen establishments and in broiler establishments

03

Course Management

Within the concept of total quality of our program, we are proud to put at your disposal a Teaching Staff of the highest level, chosen for their proven experience. Professionals from different areas and fields of expertise that make up a complete, multidisciplinary team. A unique opportunity to learn from the best.



“

*Our team of teachers, with expertise in
Animal Welfare will help you succeed in
your profession"*

Management



Dr. De la Fuente Vázquez, Jesús

- ♦ Doctor in Veterinary Medicine, Complutense University, Madrid, 2003
- ♦ Master's Degree in Science in Pig Production, Aberdeen University, 1998
- ♦ Graduated in Veterinary Medicine, Complutense University, Madrid, 1997
- ♦ Assistant Professor in the Department of Animal Production, Faculty of Veterinary Medicine, UCM, since 2005
- ♦ Collaboration grant holder in teaching and research tasks, Department of Animal Production, Faculty of Veterinary Medicine, UCM, 1997
- ♦ European Social Fund predoctoral training fellow, Department of Agriculture, University of Aberdeen, 1998
- ♦ FPU predoctoral training grant, Universidad Complutense de Madrid, 1999-2002
- ♦ Three-month stay in the Department of Animal Science, Texas A&M University, 2001
- ♦ Contract Researcher in the Department of Food Technology, National Institute of Agricultural and Food Research and Technology, INIA, 2004
- ♦ Participation as a collaborating professor in more than 40 national and international courses on Animal Welfare
- ♦ Participated in more of 35 research articles in journals indexed in the Journal Citation Report
- ♦ Participation in more than 14 publicly and privately funded research projects
- ♦ Participation in ten book chapters and complete books
- ♦ Contribution in more than 60 communications to national and international congresses

Professors

Dr. Cabezas Albéniz, Almudena

- ♦ Doctor in Veterinary Medicine, Madrid Complutense University, 2017
- ♦ Master's Degree in Veterinary Science Research, Complutense University of Madrid, 2012
- ♦ Technical Agricultural Engineer, University School of Agricultural Engineering, Polytechnic University of Madrid, 2010
- ♦ Assistant Professor in the Department of Animal Production, Faculty of Veterinary Medicine, UCM, since 2016

Dr. Díaz Díaz-Chirón, María Teresa

- ♦ Doctor in Veterinary Medicine, Madrid Complutense University, 2002
- ♦ Graduated in Veterinary Medicine, Complutense University of Madrid, 1997
- ♦ Assistant Professor in the Department of Animal Production, Faculty of Veterinary Medicine, UCM, 2019-2020

Dr. González de Chavarri Echaniz, Elisabeth

- ♦ Doctor in Veterinary Medicine, Madrid Complutense University, 1991
- ♦ Graduated in Veterinary Medicine, Complutense University of Madrid, 1987
- ♦ Assistant Professor in the Department of Animal Production, Faculty of Veterinary Medicine, UCM, since 2004

Dr. Pérez Marcos, Concepción

- ♦ Doctor in Veterinary Medicine, Madrid Complutense University, 1986
- ♦ Graduated in Veterinary Medicine, Complutense University of Madrid, 1979
- ♦ Assistant Professor in the Department of Animal Physiology, Faculty of Veterinary Medicine, UCM, since 1987

Ms. Calero Alonso, Silvia

- ♦ Assistant Pharmacist at Plaza Santa Margarita and Mercedes Heras Peña Pharmacy Office, Madrid
- ♦ Degree in Pharmacy, University of La Laguna
- ♦ Master's Degree in Animal Production and Health, Complutense University and Polytechnic University, Madrid



An impressive teaching staff, made up of professionals from different areas of expertise, will be your teachers during your training: a unique opportunity not to be missed"

04

Structure and Content

The contents have been developed by different experts, with a clear purpose: to ensure that our students acquire each and every one of the skills necessary to become true experts in this field.

A complete and well-structured program that will take you to the highest standards of quality and success.





“

*A comprehensive teaching program,
structured in well-developed teaching units,
oriented towards learning that is compatible
with your personal and professional life"*

Module 1. Animal Welfare. Concepts and Evolution

- 1.1. Evolution of the Concept of Animal Welfare, from Antiquity to Present Day
 - 1.1.1. Animal Welfare in Antiquity
 - 1.1.2. Introduction to the Concept of Welfare
 - 1.1.3. Animal Welfare Today
- 1.2. Vision of the Concept of Animal Welfare from Different Cultures
 - 1.2.1. Buddhism
 - 1.2.2. Catholicism
 - 1.2.3. Islam
 - 1.2.4. Judaism
 - 1.2.5. Orthodox Church
 - 1.2.6. Protestantism
- 1.3. Concept of Animal Welfare, Approaches to Understanding It
 - 1.3.1. Definitions of Animal Welfare
 - 1.3.2. Emotion-Based Approach
 - 1.3.3. Function-Based Approach
 - 1.3.4. Ethology-Based Approach
- 1.4. Physiological Responses to Stress
 - 1.4.1. Hypothalamus-Pituitary-Adrenal-Glands Axis
- 1.5. Acute and Chronic Stress Response
 - 1.5.1. Physiological Responses to Chronic Stress
 - 1.5.2. Physiological Responses to Acute Stress
- 1.6. Concepts of "Eustress" and "Distress"
 - 1.6.1. Eustress: Optimal Stress
 - 1.6.2. Distress: Negative Stress
- 1.7. The Role of Stress Response in Welfare
- 1.8. Freedoms and Needs
 - 1.8.1. Concept of Freedoms
 - 1.8.2. The Role of Freedoms in Animal Welfare
 - 1.8.3. Concept of Needs
- 1.9. Animal Welfare Assessment Systems
 - 1.9.1. Direct Indicators
 - 1.9.2. Indirect Indicators

- 1.10. Developing Animal Welfare Assessment Protocols
 - 1.10.1. TGI 35 L
 - 1.10.2. WelfareQuality ®
 - 1.10.3. AWIN (Animal Welfare Indicators)

Module 2. Applied Animal Ethology

- 2.1. Applied Animal Ethology and Its Relation to Animal Welfare
 - 2.1.1. General Information on Ethology
 - 2.1.2. Origin of Applied Ethology
 - 2.1.3. Fields of Applied Ethology
- 2.2. Organization of Behavior
 - 2.2.1. Learning
 - 2.2.2. Motivation
- 2.3. The Effect of Domestication on Animal Behavior
 - 2.3.1. Definition of Domestication
 - 2.3.2. The Environment in Domestication
 - 2.3.3. Domestication and Animal Behavior
- 2.4. Individual Animal Behavior
 - 2.4.1. Feeding
 - 2.4.2. Body Care
 - 2.4.3. Exploration
 - 2.4.4. Reaction Behavior
 - 2.4.5. Rest and Sleep
- 2.5. Social and Reproductive Behavior
 - 2.5.1. General Social Behavior
 - 2.5.2. Association
 - 2.5.3. Social Interactions
 - 2.5.4. Reproductive Capacity
- 2.6. Infant and Parental Behavior
 - 2.6.1. Fetal Behavior and Childbirth
 - 2.6.2. Maternal Behavior
 - 2.6.3. Neonatal and Juvenile Behavior
 - 2.6.4. Play, Practice and Exercise

- 2.7. Applied Ethology in Swine and Poultry
 - 2.7.1. Origin and Domestication of Swine
 - 2.7.2. Swine Signals and Communication
 - 2.7.3. Biological Rhythms in Swine: Diet, Rest, Reproduction
 - 2.7.4. Origin and Domestication of Birds
 - 2.7.5. Signals and Communication in Birds
 - 2.7.6. Biological Rhythms in Birds: Diet, Rest, Reproduction
- 2.8. Applied Ethology in Cattle, Sheep and Goats
 - 2.8.1. Origin and Domestication of Beef Cattle
 - 2.8.2. Signals and Communication in Cattle
 - 2.8.3. Biological Rhythms in Cattle: Diet, Rest, Reproduction
 - 2.8.4. Origin and Domestication of Sheep and Goats
 - 2.8.5. Signals and Communication in Sheep and Goats
 - 2.8.6. Biological Rhythms in Sheep and Goats: Diet, Rest, Reproduction
- 2.9. Applied Ethology in Dogs and Cats
 - 2.9.1. Origin and Domestication of Dogs
 - 2.9.2. Signals and Communication in Dogs
 - 2.9.3. Biological Rhythms in Dogs: Diet, Rest, Reproduction
 - 2.9.4. Origin and Domestication of Cats
 - 2.9.5. Signals and Communication in Cats
 - 2.9.6. Biological Rhythms in Cats: Diet, Rest, Reproduction
- 2.10. Environmental Enrichment
 - 2.10.1. Concept of Environmental Enrichment
 - 2.10.2. Functions of Environmental Enrichment
 - 2.10.3. Types of Environmental Enrichment

Module 3. National and International Animal Protection Legislation

- 3.1. European Union Treaties
 - 3.1.1. Prior to the Treaty of Lisbon
 - 3.1.2. The Treaty of Lisbon
- 3.2. The European Parliament, Its Role in Animal Protection
 - 3.2.1. The European Parliament, First Stage prior to 1986
 - 3.2.2. Second Stage of Animal Welfare in the European Parliament
 - 3.2.3. The European Parliament and Animal Welfare Today
- 3.3. The European Council: Origin of Legislation in the European Union
 - 3.3.1. The European Council
 - 3.3.2. The Role of the European Council on Animal Welfare
- 3.4. The Role of International Agencies in Animal Welfare
 - 3.4.1. The Role of the Organization for Economic Co-Operation and Development (OECD)
 - 3.4.2. The Role of Food and Agriculture Organization of the United Nations (FAO)
 - 3.4.3. The Role of the World Organization for Animal Health (WOAH)
- 3.5. Animal Protection in Countries outside the European Union: North America, South America, Africa, Asia and Oceania
 - 3.5.1. Animal Protection Regulations in the Americas
 - 3.5.2. Animal Protection Regulations in Africa
 - 3.5.3. Animal Protection Regulations in Asia
 - 3.5.4. Animal Protection Regulations in Oceania

Module 4. Livestock Establishments. Welfare in Swine, Beef Cattle and Poultry

- 4.1. Welfare in Swine Establishments: Facilities and Equipment
 - 4.1.1. Accommodation
 - 4.1.2. Environmental Needs
 - 4.1.3. Management
- 4.2. Breeding Swine Welfare
 - 4.2.1. Breeding Sow Welfare
 - 4.2.2. Boar Welfare
- 4.3. Welfare in Swine Breeding
 - 4.3.1. Nursing
 - 4.3.2. Transition
- 4.4. Welfare in Fattening Pigs
 - 4.4.1. Accommodation and Facilities
 - 4.4.2. Management
- 4.5. Welfare in Beef Cattle Establishments: Facilities and Equipment
 - 4.5.1. Accommodation
 - 4.5.2. Environmental Needs
 - 4.5.3. Management
- 4.6. Dairy Cow Welfare
 - 4.6.1. Cow Comfort





- 4.7. Calf Welfare
 - 4.7.1. Accommodation and Facilities
 - 4.7.2. Management
- 4.8. Welfare in Poultry Establishments: Facilities and Equipment
 - 4.8.1. Accommodation
 - 4.8.2. Environmental Needs
 - 4.8.3. Management
- 4.9. Laying Hen Welfare
 - 4.9.1. Alternative Egg Production Systems
- 4.10. Welfare in Broiler Fattening
 - 4.10.1. Accommodation and Facilities
 - 4.10.2. Management

“

*This program will allow you
to advance in your career
comfortably"*

05 Methodology

This academic program offers students a different way of learning. Our methodology uses a cyclical learning approach: **Relearning.**

This teaching system is used, for example, in the most prestigious medical schools in the world, and major publications such as the **New England Journal of Medicine** have considered it to be one of the most effective.



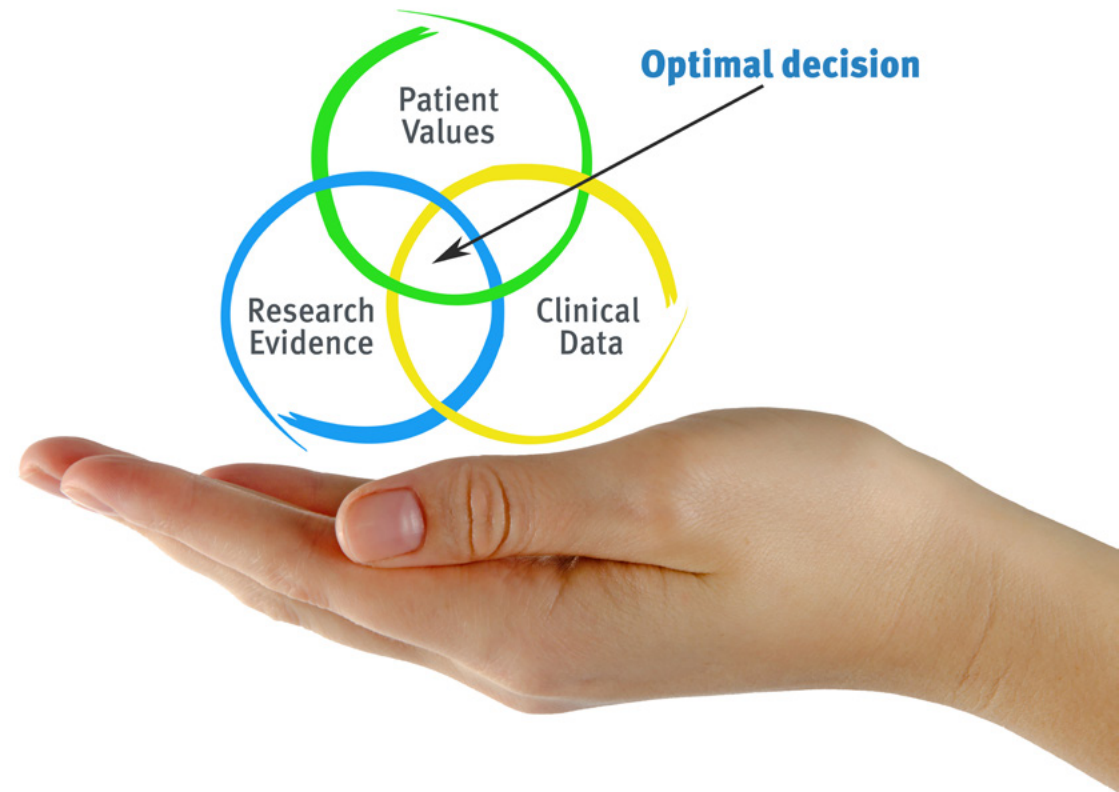
“

Discover Relearning, a system that abandons conventional linear learning, to take you through cyclical teaching systems: a way of learning that has proven to be extremely effective, especially in subjects that require memorization"

At TECH we use the Case Method

What should a professional do in a given situation? Throughout the program you will be presented with multiple simulated clinical cases based on real patients, where you will have to investigate, establish hypotheses and, finally, resolve the situation. There is an abundance of scientific evidence on the effectiveness of the method. Specialists learn better, faster, and more sustainably over time.

With TECH you will experience a way of learning that is shaking the foundations of traditional universities around the world.



According to Dr. Gervas, the clinical case is the annotated presentation of a patient, or group of patients, which becomes a "case", an example or model that illustrates some peculiar clinical component, either because of its teaching power or because of its uniqueness or rarity. It is essential that the case is based on current professional life, in an attempt to recreate the actual conditions in a veterinarian's professional practice.

“

Did you know that this method was developed in 1912, at Harvard, for law students? The case method consisted of presenting students with real-life, complex situations for them to make decisions and justify their decisions on how to solve them. In 1924, Harvard adopted it as a standard teaching method”

The effectiveness of the method is justified by four fundamental achievements:

1. Veterinarians who follow this method not only manage to assimilate concepts, but also develop their mental capacity through exercises to evaluate real situations and knowledge application
2. Learning is solidly translated into practical skills that allow the student to better integrate into the real world.
3. Ideas and concepts are understood more efficiently, given that the example situations are based on real-life.
4. The feeling that the effort invested is effective becomes a very important motivation for veterinarians, which translates into a greater interest in learning and an increase in the time dedicated to working on the course.



Relearning Methodology

At TECH we enhance the case method with the best 100% online teaching methodology available: Relearning.

This university is the first in the world to combine the study of clinical cases with a 100% online learning system based on repetition, combining a minimum of 8 different elements in each lesson, a real revolution with respect to the mere study and analysis of cases.

Veterinarians will learn through real cases and by resolving complex situations in simulated learning environments. These simulations are developed using state-of-the-art software to facilitate immersive learning.



At the forefront of world teaching, the Relearning method has managed to improve the overall satisfaction levels of professionals who complete their studies, with respect to the quality indicators of the best online university (Columbia University).

With this methodology more than 65,000 veterinarians have been trained with unprecedented success in all clinical specialties, regardless of the surgical load. Our teaching method is developed in a highly demanding environment, where the students have a high socio-economic profile and an average age of 43.5 years.

*Relearning will allow you to learn with less effort
and better performance, involving you more
in your training, developing a critical mindset,
defending arguments, and contrasting opinions: a
direct equation for success.*

In our program, learning is not a linear process, but rather a spiral (learn, unlearn, forget, and re-learn). Therefore, we combine each of these elements concentrically.

The overall score obtained by TECH's learning system is 8.01, according to the highest international standards.



This program offers the best educational material, prepared with professionals in mind:



Study Material

All teaching material is produced by the specialists who teach the course, specifically for the course, so that the teaching content is highly specific and precise.

These contents are then applied to the audiovisual format, to create the TECH online working method. All this, with the latest techniques that offer high quality pieces in each and every one of the materials that are made available to the student.



Latest Techniques and Procedures on Video

TECH introduces students to the latest techniques, the latest educational advances and to the forefront of current and procedures of veterinary techniques. All of this in direct contact with students and explained in detail so as to aid their assimilation and understanding. And best of all, you can watch the videos as many times as you like.



Interactive Summaries

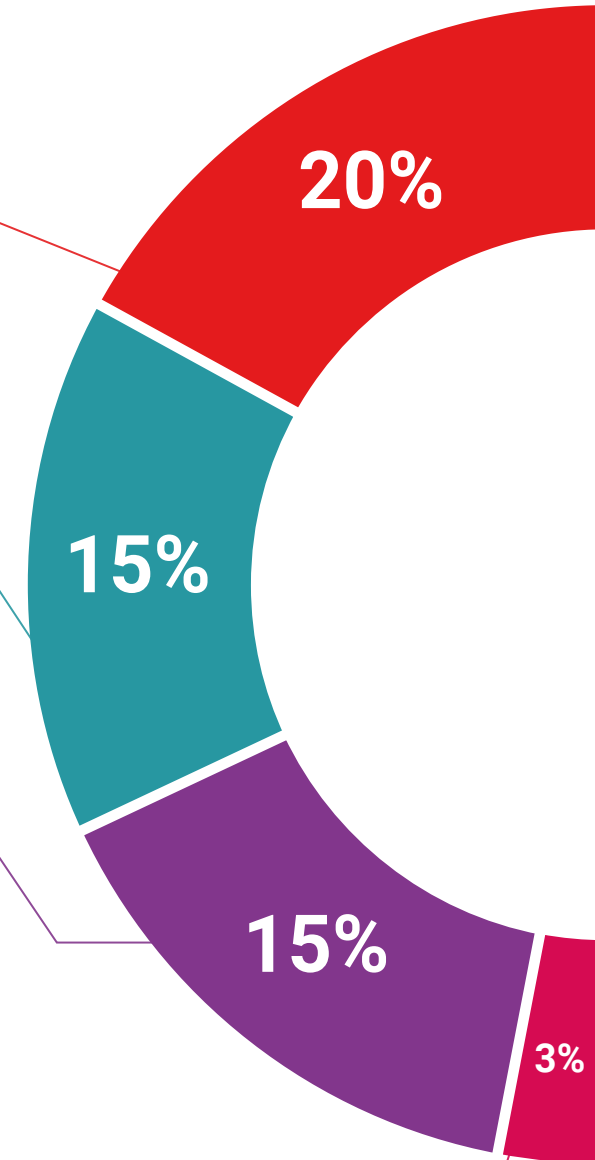
The TECH team presents the contents attractively and dynamically in multimedia lessons that include audio, videos, images, diagrams, and concept maps in order to reinforce knowledge.

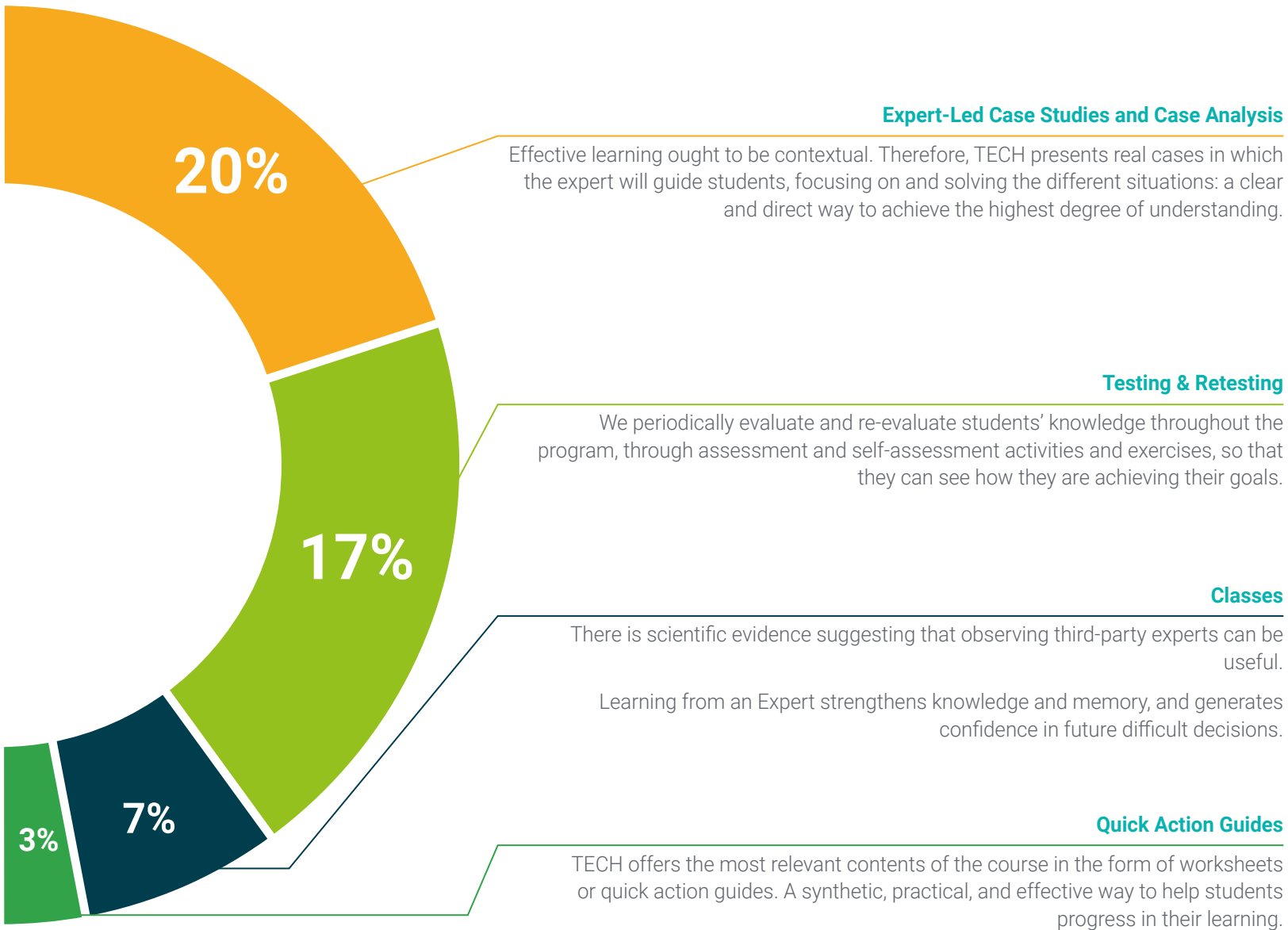
This exclusive educational system for presenting multimedia content was awarded by Microsoft as a "European Success Story".



Additional Reading

Recent articles, consensus documents and international guidelines, among others. In TECH's virtual library, students will have access to everything they need to complete their course.





06 Certificate

The Postgraduate Diploma in Animal Welfare during Transportation guarantees students, in addition to the most rigorous and up-to-date education, access to a Postgraduate Diploma issued by TECH Global University.



“

*Successfully complete this program
and receive your university qualification
without having to travel or fill out laborious
paperwork”*

This program will allow you to obtain your **Postgraduate Diploma in Animal Welfare in Poultry, Beef Cattle and Pig Farming** endorsed by **TECH Global University**, the world's largest online university.

TECH Global University is an official European University publicly recognized by the Government of Andorra ([official bulletin](#)). Andorra is part of the European Higher Education Area (EHEA) since 2003. The EHEA is an initiative promoted by the European Union that aims to organize the international training framework and harmonize the higher education systems of the member countries of this space. The project promotes common values, the implementation of collaborative tools and strengthening its quality assurance mechanisms to enhance collaboration and mobility among students, researchers and academics.

This **TECH Global University** title is a European program of continuing education and professional updating that guarantees the acquisition of competencies in its area of knowledge, providing a high curricular value to the student who completes the program.

Title: **Postgraduate Diploma in Animal Welfare in Poultry, Beef Cattle and Pig Farming**

Modality: **online**

Duration: **6 months**

Accreditation: **24 ECTS**



future
health confidence people
education information tutors
guarantee accreditation teaching
institutions technology learning
community commitment
personalized service innovation
knowledge present quality
development languages
virtual classroom



Postgraduate Diploma
Animal Welfare in Poultry,
Beef Cattle and Pig Farming

- » Modality: online
- » Duration: 6 months
- » Certificate: TECH Global University
- » Credits: 24 ECTS
- » Schedule: at your own pace
- » Exams: online

Postgraduate Diploma

Animal Welfare in Poultry, Beef Cattle and Pig Farming

