

CEFR B2 German Exam





CEFR
B2 German
Exam

Website: www.techtitute.com/us/school-of-languages/language-certification-exam/language-certification-exam-cefr-level-b2-german

Index

01

Welcome

p. 6

02

Why Is it Important to Obtain
B2 Certification?

p. 8

03

Methodology and Criteria for
Exam Evaluation

p. 12

04

Who Can Take the Exam?

p. 26

05

Assessment and
Certification

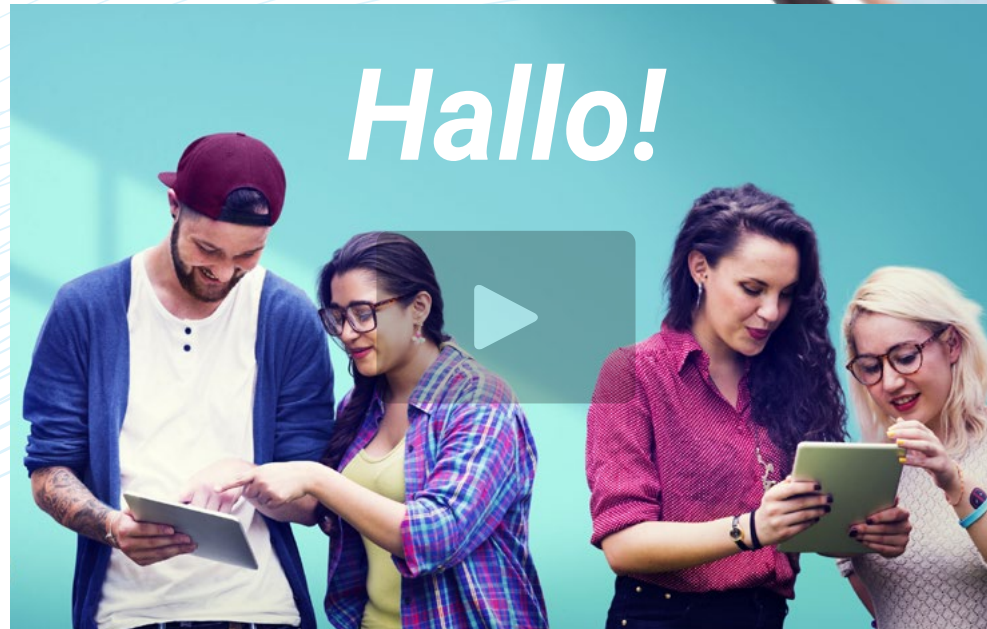
p. 30



01

Welcome

We have designed our language programs adapted to the required standards so that our students not only acquire linguistic skills in different languages, but also obtain a certification in terms of recognition and usefulness. This B2 level exam evaluates the skills of the Common European Framework of Reference for Languages, and at the end of the exam the student will receive a certificate indicating the level of proficiency acquired.





“

Many schools, universities and companies only accept candidates who certify their level by means of a certificate based on the Common European Framework of Reference for Languages (CEFR)”

Introduction

In today's competitive world, speaking other languages is a key part of our modern culture. It is essential to have the ability to speak and understand other languages, in addition to obtaining a qualification that accredits and recognizes our linguistic competence in the languages in which we are proficient. The Common European Framework of Reference for Languages is the highest recognized and accredited system for assessing a student's level of proficiency. Although other validation systems exist, they do not have a measurement system or standards as globally accepted as the CEFR. This framework establishes a single criterion to determine the different levels of difficulty of the courses and using this system allows us to grant a widely recognized qualification, worldwide, on the level of language we possess.

You will have the possibility to certify your German level with an accreditation that meets the CEFR criteria.

In addition to the individual attention offered by your personal examiner, you will be able to take the exam at the time you decide and from wherever you want.





“

It is proven that learning languages increases your intelligence. Learning a foreign language strengthens the brain's neural networks”

José Antonio Marina.
Philosopher, writer and teacher.



Flexible and Tailored

Take your exam wherever you are, 100% online, at the time of your choice. You choose the exam that best suits you.



No Stress

Are you nervous about waiting in long lines to register for the exam and take the different tests? You will be able to register online and take your test with an examiner just for you, with no external pressure.



No Waiting

Receive your certificate in record time and in digital format so you can always carry it with you.



02

Why Is it Important to Obtain B2 Certification?

The Level B2 German certificate is undoubtedly a competitive advantage within the capabilities of any person wishing to get a new job. In particular, in Germany or in a German company, it will be a prerequisite to be able to function in the working environment, especially in cases where German is the working language. In addition, there are many other situations where language level certification will be essential, such as some competitive examinations, job vacancies, access to some higher education programs. Passing this exam will not only cover your work or professional development needs, but it will also be the only way that will allow you to access level C1 of German.





“

As a sign of its importance, in the last year more than 4 million candidates, in more than 130 countries, took the tests leading to certification at this level”

tech 10 | Why Is it Important to Obtain B2 Certification?

TECH Technological - University!

The Common European Framework of Reference for Languages (CEFR) is the only recognized and accredited system for assessing a student's level of proficiency. It is now the international reference system established to define the linguistic proficiency of any language. There are many public and private institutions that offer certification through various types of validation exams, with the CEFR being the most widely accepted standard.

At TECH we offer you the possibility to perform a test to obtain a B2 linguistic level certificate 100% based on the linguistic skills in the CEFR, the only system recognized and accepted throughout Europe.

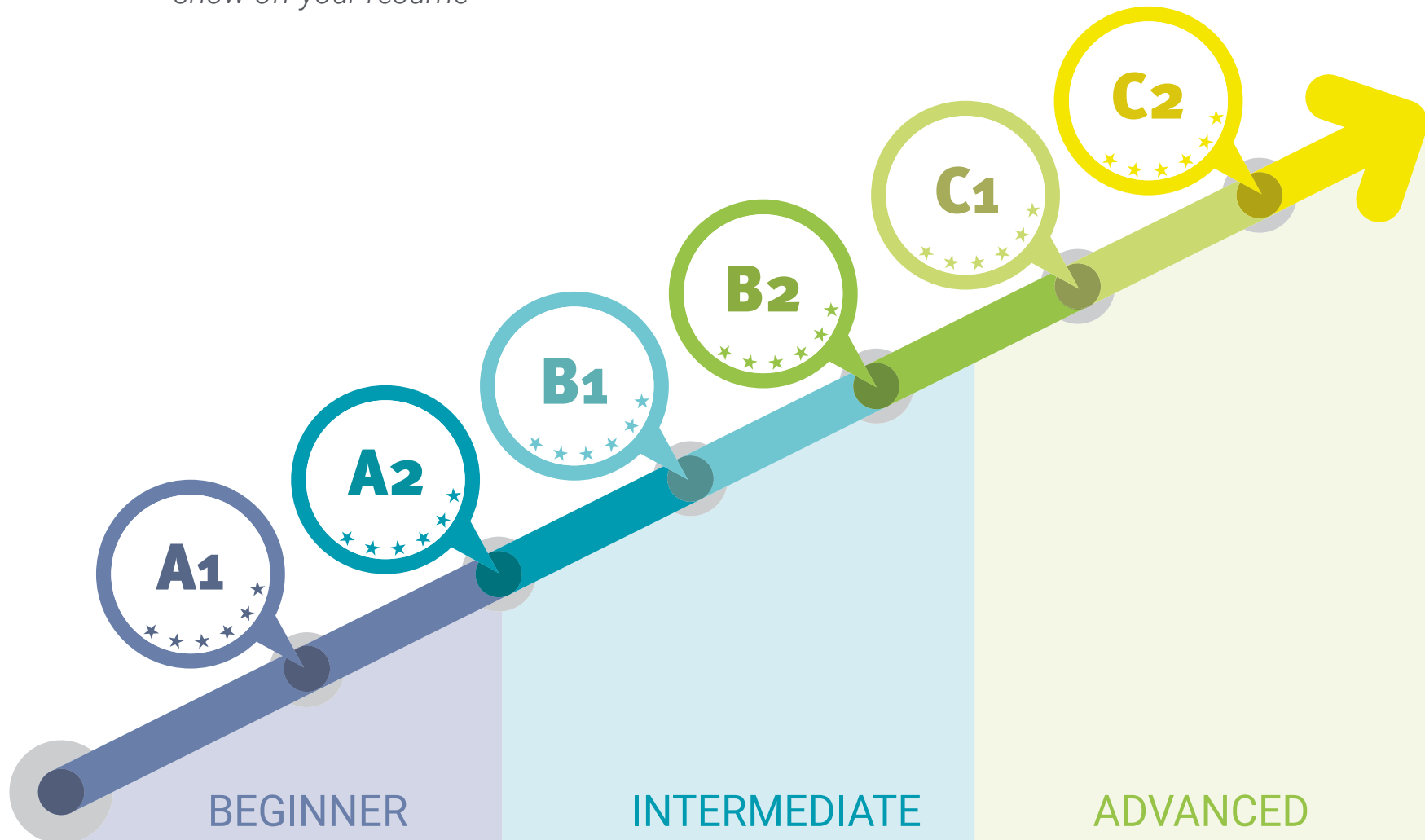
*Accredit your level of German
with an internationally
recognized CEFR qualification.*

*Other language certification systems require
the student to periodically recertify their level
of proficiency. The CEFR certificate is for life.*





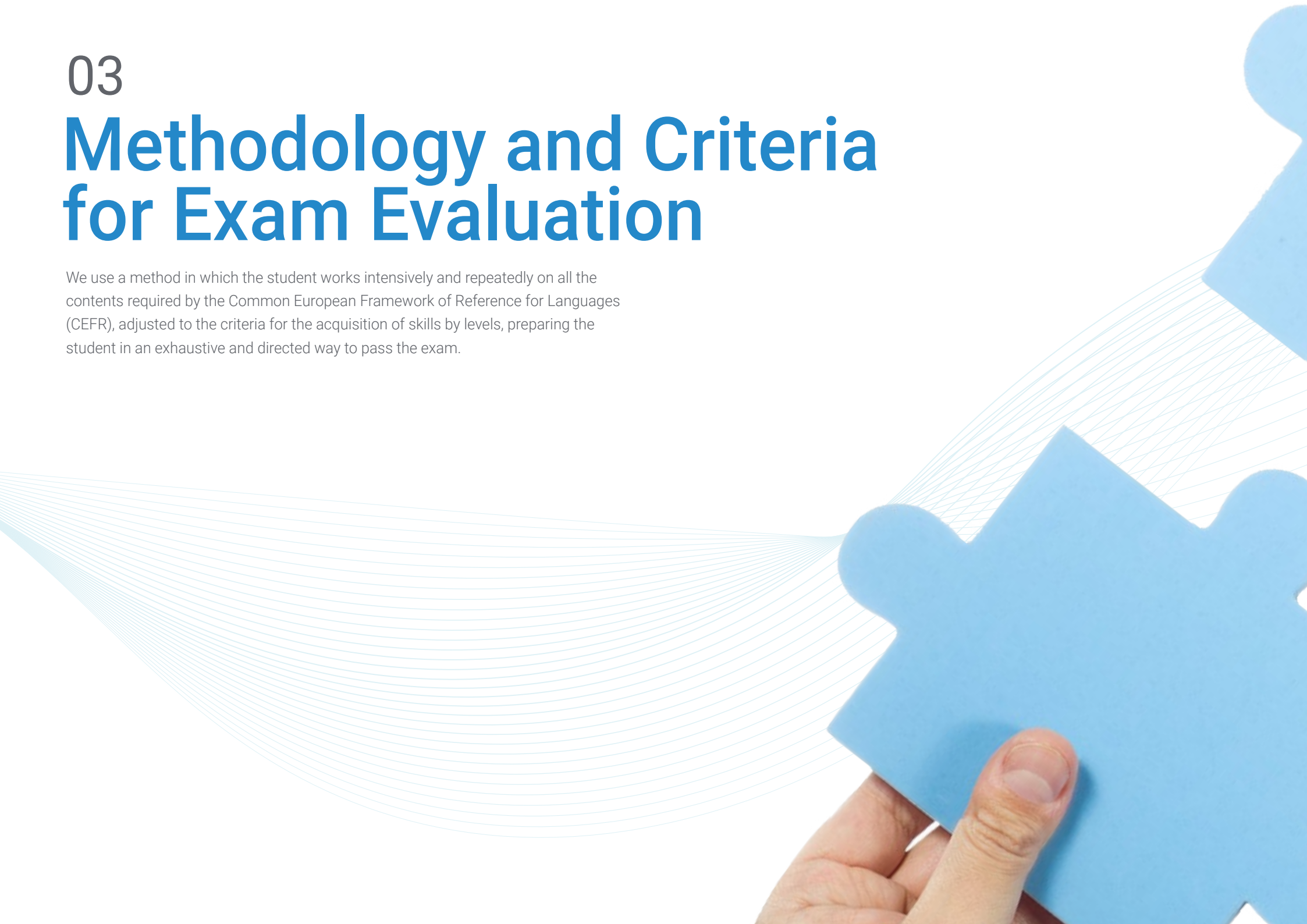
Get your B2 certificate and show off your resume"



03

Methodology and Criteria for Exam Evaluation

We use a method in which the student works intensively and repeatedly on all the contents required by the Common European Framework of Reference for Languages (CEFR), adjusted to the criteria for the acquisition of skills by levels, preparing the student in an exhaustive and directed way to pass the exam.





“

Both oral expression and other language skills will be assessed by an online examiner in a synchronous manner”

What are the Level B2 Skills?

The B2 level accreditation test corresponds to the fourth level of the six levels that make up the Common European Framework of Reference for Languages (CEFR). At this level the candidate must be able to understand the main ideas of complex texts dealing with both concrete and abstract topics, even if they are of a technical nature provided they are within his/her field of specialization; he/she must also be able to interact with native speakers with a sufficient degree of fluency and naturalness, so that communication is effortless for either of the speakers and, in addition, produce clear and detailed texts on various topics, as well as defend a point of view on general topics indicating the pros and cons of the different options.

“ Show that you are able to solve, naturally, everyday communication situations in simulated learning environments and get your level certification”

01

It is the ability to understand the main ideas in complex texts which deal with both concrete and abstract topics, even if they are of a technical nature, as long as they are within their field of expertise.



02

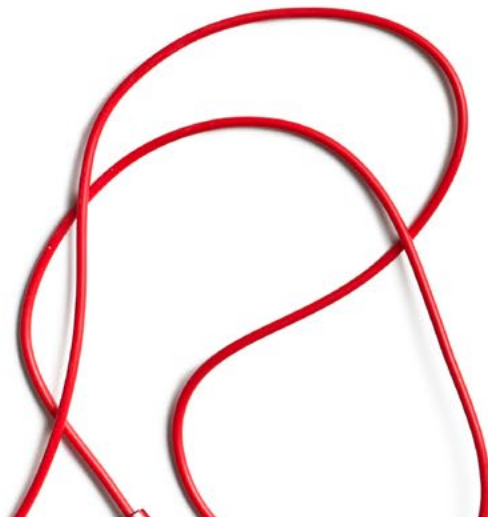
You can interact with native speakers with a sufficient degree of fluency and naturalness, so that communication is effortless for the interlocutors.

03

You can produce clear and detailed texts on a range of diverse topics, as well as defend your point of view on general topics, indicating the pros and cons or different options.

“

Level B2 is the 4th level of the CEFR, and certifies a medium-high linguistic competence”



Level B2 Self-Assessment Chart

What will I be able to do after completing the course?

Comprehension	Speaking	Writing
<p>Listening comprehension</p> <p>Understand long speeches and lectures, and even follow complex arguments as long as the topic is relatively familiar. Understand nearly all the news bulletins on the television and on current affairs programs. Understand most films in which the language is spoken at a standard language level.</p> <p>Reading comprehension</p> <p>Read articles and reports related to modern problems in which the authors express specific viewpoints. Understand contemporary literary prose.</p>	<p>Oral interaction</p> <p>Be able to participate in a conversation with fluency and spontaneity, which makes normal communication with native speakers possible. Take an active role in debates based on daily situations, explaining and defending points of view</p> <p>Oral expression</p> <p>Present clear and detailed descriptions of a wide range of topics related to my speciality. Explain my point of view on a topic, mentioning the advantages and disadvantages of different options.</p>	<p>Written Expression</p> <p>Write clear and detailed texts on a wide range of topics related to their interests. Write essays or reports conveying information or proposing reasons that support or refute a particular point of view. Write letters that emphasize the importance given to certain facts and experiences</p> <p><i>Check your level. Assess yourself. Hundreds of multiple-choice questions for continuous assessment.</i></p>

Qualitative aspects of spoken language usage for Level B2

(According to the Common European Framework of Reference for Languages)

What is expected to be achieved with this level?

Scope

Has a sufficiently broad level of language to be able to give clear descriptions and express points of view on general topics without searching for words, and knows how to use complex sentences to achieve this.

Correction

Demonstrates relatively high grammatical accuracy. Not make mistakes that cause misunderstanding and be able to correct almost all mistakes made.

Fluency

Be capable of producing fragments of a speech with a fairly uniform rhythm; although there could be pauses while thinking of certain structures or expressions. Make very few long pauses while speaking.

Interaction

Start a conversation, take your turn to speak at the appropriate moment and finish a conversation when necessary, although it may not always be done with elegance. Participate in debates on day to day topics, demonstrating understanding, inviting others to participate, etc.

Coherence

Use a limited number of cohesion mechanisms to turn sentences into a clear and coherent speech, although there may be some "nervousness" if the speech is long.



Objectives

01

Listening comprehension objectives

The candidate is able to:

- Understand the main ideas of a linguistically complex speech, dealing with both concrete and abstract topics delivered at a standard language level, including technical discussions within their field of expertise
- Understand long speeches and complex lines of reasoning as long as the subject matter is reasonably familiar and the development of the speech is facilitated by explicit markers
- Understand any type of speech, both face-to-face conversations and broadcast speeches, on topics, usual or not, of personal, social, academic or professional life. Only excessive background noise, inadequate structuring of speech or idiomatic use of language affect their ability to understand
- Pick up with some effort much of what is being said around them, but may find it difficult to participate effectively in a discussion with several native speakers if they do not modify their speech in some way
- Follow lively conversations between native speakers
- Understand the main ideas of linguistically complex lectures, talks and reports, and other forms of academic and professional presentation
- Understand statements and messages on concrete and abstract topics, in standard language and at a normal pace





02

Reading comprehension objectives

The candidate is able to:

- Understand most radio documentaries and other recorded or rebroadcast material spoken in standard language, and identify the speaker's mood and tone
- Understand recordings in standard language that may be encountered in social, professional or academic life, and identify the speaker's points of view and attitudes, as well as the content of the information
- Read with a high level of independence, adapting reading style and speed to different texts and purposes and use appropriate reference sources selectively. Have a large active reading vocabulary, but may have some difficulty with infrequent idioms
- Read information related to their field of expertise and easily grasp the essential meaning
- Quickly search through long and complex texts to locate relevant details. Quickly identify the content and significance of news items, articles and reports on a wide range of professional topics and decide whether further analysis is appropriate
- Understand articles and reports related to current problems in which the authors express specific viewpoints

- ♦ Obtain information, ideas and opinions from highly specialized sources within their field of interest. Understand specialized articles that are not in their field of expertise as long as they can use a dictionary from time to time to confirm their interpretation of the terminology
- ♦ Understand lengthy and complex instructions that are within their expertise, including details about conditions and warnings as long as they can re-read difficult sections
- ♦ Understand most television news and current affairs programs. Understand documentaries, live interviews, debates, plays and most standard-language films

03

Speaking objectives

The candidate is able to:

- ♦ Participate in conversations with a degree of fluency and spontaneity that enables regular interaction with native speakers without strain for either party. Emphasize the personal importance of certain facts and experiences, express and defend points of view with clarity, providing adequate explanations and arguments
- ♦ Speak fluently, accurately and effectively on a wide range of general, academic, professional or leisure topics, clearly marking the relationship between ideas. Communicates spontaneously and has good grammatical control without showing many signs of having to restrict what he/she says and adopting a level of formality appropriate to the circumstances
- ♦ Understand in detail what is said in standard language, even in an environment with background noise
- ♦ Approach extensive conversations on most general topics, even in a noisy environment, in a clearly participatory manner
- ♦ Have conversations with native speakers without unintentionally amusing or annoying them, and without demanding different behavior from them than they would have with a native speaker
- ♦ Convey a certain emotion and highlight the personal importance of facts and experiences
- ♦ Follow the rhythm of lively discussions between native speakers. Express ideas and opinions with precision, present complex lines of argument convincingly and respond to them
- ♦ Take an active part in informal discussions that occur in everyday situations by making comments, clearly expressing their points of view, evaluating alternative proposals, making hypotheses and responding to them
- ♦ With some effort, pick up much of what is said in discussions going on around them, but may find it difficult to participate effectively in discussions with several native speakers if they do not modify their speech in some way
- ♦ Express and uphold their opinions in discussions by providing appropriate explanations, arguments, and comments

- ♦ Keep up with lively discussions and accurately identify the arguments of different points of view. Express their ideas and opinions accurately, presenting complex lines of argument and responding to them with conviction
- ♦ Understand, with complete certainty, detailed instructions. Contribute to the progress of the work by inviting others to participate, speak up, etc.
- ♦ Outline an issue or problem clearly, speculating on the causes or consequences and comparing the advantages and disadvantages of different approaches
- ♦ Negotiate the resolution of conflicts, such as claiming an unfair traffic fine, claiming financial responsibility for damages caused in an apartment or for culpability in an accident
- ♦ Express their opinions in the event of damages, using persuasive language to claim compensation, and clearly establish the limits of any concession they are willing to make
- ♦ Explain a problem that has arisen and make it clear that the service provider or customer must make concessions
- ♦ Understand and exchange complex information and advice on all matters related to their profession. Communicates detailed information with complete certainty

04

- ♦ Make clear and detailed descriptions of how to carry out a procedure. Summarizes and communicates information and arguments from a variety of sources
- ♦ Conduct effective and fluent interviews, even spontaneously departing from prepared questions, following the thread and giving interesting answers
- ♦ Take the initiative in an interview, and expand and develop their ideas, either with little help or getting it if needed from the interviewer

Writing objectives

The candidate is able to:

- ♦ Express news and points of view effectively when writing and establish a relationship with other people's points of view
- ♦ Write letters that convey emotion and highlight the personal significance of events and experiences; comment on the news and views of the person they are writing to

Features of the B2 German Exam

1 What does the TECH TECHNOLOGICAL UNIVERSITY TEST ASSESS?

- ♦ The contents of the exams and the evaluation criteria will be those corresponding to the CEFR descriptors.
- ♦ No published assignments or test materials will be used.
- ♦ The four skills (oral and written expression, oral and written comprehension) will be evaluated together or separately. Use of language tasks may also be included.
- ♦ All test tasks, with the possible exception of the use of language tasks, will be close to real-world tasks and the text materials will be authentic, as far as possible and according to the level tested.

2 How long does the test last?

The exams, whatever the level, shall not be less than 142 minutes or more than 200 minutes long.



3 How is the test carried out?

The oral and written comprehension tests, as well as the written expression test, are conducted via computer.

The speaking test consists of an interview, whenever possible, with two examiners and recorded.

The written and oral expression tests, whenever possible, will be evaluated by two examiners according to the procedures established by TECH.

Candidates must obtain a minimum score of 6 out of 10 on each part of the exam in order to obtain a PASS grade.

If you do not pass all areas, you will not get your certificate but we will give you a detailed report of your skills in each area and competency.

4 What are the assessment criteria?

With regard to grades, TECH, following the recommendations, uses the following criteria:



Candidates who obtain at least 60% in each of the 4 parts of the exam will pass the exam. Based on the overall score, a grade will be awarded that will appear on the certificate issued by TECH, according to the following scale:



In the event that a candidate does not pass any of the 4 parts of the test, they must retake the entire exam.

Structure, duration and weighting of the 4 parts of the examination

Duration	Sections			Instructions
	Skill		Time	
B2 142-200 minutes	Speaking	Monologue and interaction in pairs	12 - 15 minutes	Instructions in mother tongue
	Listening comprehension	Short audios, which may be short dialogues or monologues related to topics of the level.	35 - 45 minutes	
	Writing	Production of 2 different types of texts of at least 400 words in total	50 - 70 minutes	
	Reading comprehension	Use of authentic documents	45 - 70 minutes	

Structure of the Level B2 German exam

It consists of 4 parts:

Listening, Speaking, Reading and Writing

The total duration of the exam is 142 to 200 minutes, with the first three parts taking place one after the other (1st Listening, 2nd Writing, 3rd Reading). There will be a minimum of 20 minutes of rest between the first three parts and the 4th part (Speaking), which can be done on the same day, or on a different day, with a maximum limit of 7 days after the other block has been completed.

Listening (Duration 35-45 minutes)

Listening consists of 4 exercises, each of which is based on an audio recording that can be a monologue or a conversation between 2 or more people. Exercises include, multiple choice, sentence completion, completion of charts, graphs or diagrams, and short answers in one or two sentences. In this part,, keep in mind that accents from any part of the world can be heard, which adds a substantial degree of difficulty.

Reading (Duration: 45-70 minutes)

It consists of 40 questions grouped in 3 sections. Each text is between 1300 and 2100 words long and several questions are asked about it. The texts are actual excerpts from books, research articles, newspapers and scientific journals. The type of questions, as in the oral part, is highly varied: multiple answers, completing tables, graphs or diagrams, locating information in the text, indicating the writer's opinion, etc.

Writing (Duration: 50-70 minutes)

This part consists of two exercises, an essay between 125 and 250 words and another between 300 and 450 words. As a first draft a small report is usually requested on a piece of information provided to the examinee in any format (text, graph, table or diagram). Regarding the 300-450 word essay, a piece of information is usually presented very briefly (a couple of lines), followed by a statement about it, and then the candidate is asked to explain whether they agree or disagree with the statement, briefly stating the necessary arguments. The second exercise accounts for two thirds of the "Writing" grade and the first exercise for one third.

Speaking (Duration: 12-15 minutes)

In this last part, a conversation is held with an examiner, and it is designed to be as realistic as possible. It is divided into 3 subsections. In the first, the candidate responds to personal, family and/or everyday questions. In the second, the candidate discusses a specific topic indicated by the examiner. In this case, the ability to produce a coherent and orderly discourse is valued. In the third and last one, both the examiner and the candidate have a conversation on a specific topic, where oral interaction and discussion skills are assessed. The entire speaking part is recorded for later review purposes.

Detailed description of the B2 GERMAN EXAM

Parts of the Exam	Duration	Tests	Scoring
<p>Reading Comprehension</p> <p>The texts or documents will be authentic (between 1,300 and 2,100 words in total) and of different types: informative, argumentative, narrative, opinion, descriptive. The candidate will be required to perform 3/4 tasks which may include:</p> <ul style="list-style-type: none"> ♦ Multiple options ♦ Matching or linking phrases or sentences to different parts of the text ♦ Reintegrate a fragment into a text 	45-70 minutes	3/4 tasks min 20 items	25% (1 point per item)
<p>Listening comprehension</p> <p>Audio texts can be a conversation, an interview or a talk of formal, informal or academic register, and will be listened to twice. The candidate will be required to perform 3 or 4 tasks which may include:</p> <ul style="list-style-type: none"> ♦ Multiple options ♦ Matching or linking phrases or sentences to different parts of the audio 	35-45 minutes	3/4 tasks min 20 items	25% (1 point per item)
<p>Writing</p> <p>The candidate will have to complete 2 assignments (minimum 300 words in total):</p> <ul style="list-style-type: none"> ♦ Write a formal or informal letter or e-mail. The candidate will have to perform some of the following functions: requesting or giving Information, complaining, making recommendations or suggestions, giving advice, giving instructions, etc., 140/160 words ♦ Write a text of 160/2210 words. May choose between 2 options of the following types: narrative, essay, article, review 	50-70 minutes	2 tasks	25% (each text is graded over 10)
<p>Speaking</p> <p>(Monologue and interaction in pairs) The candidate will have to perform 4 parts that will be recorded with his/her consent:</p> <ul style="list-style-type: none"> ♦ General questions about personal Information (family, work, free time, possible future plans, past experiences, etc.) ♦ Compare 2 photos on the same topic and answer a question related to the two photos. The candidate will have to speak alone for approximately 1 minute ♦ Interaction in pairs. Both candidates will have to talk about a hypothetical situation, represented in images. They will have to express opinions, preferences, agreement and disagreement and make suggestions. Questions related to the theme of part 3 	12-15 minutes	4 tasks	25% (each text is graded over 10)

04

Who Can Take the Exam?

Candidates for the Level B2 accreditation test may be members of the University Community, as well as nationals or foreigners (over 16 years of age) who wish to accredit their level of linguistic competence for academic, educational, professional or personal purposes. Although the interests and motivations of our students are different they all have a common goal: to improve and certify their level of German.





“

TECH provides you with access to your exam and helps you to pass it. Don't keep thinking about it and certify your level!"

Why are our students interested in certifying their level?



Academic 25%

- ♦ Access to a university degree
- ♦ Access to doctoral studies
- ♦ Access to an official Master's Degree or postgraduate training program



Educational 13%

- ♦ Continuation of language studies
- ♦ Improve language skills



Personal 12%

- ♦ Improve CV
- ♦ Confirmation of skills



Professional 50%

- ♦ Access to a new position
- ♦ Promotion or job improvement





“

TECH supports you to take the exam online, putting all the means at your disposal so that you can focus on taking the test”

05

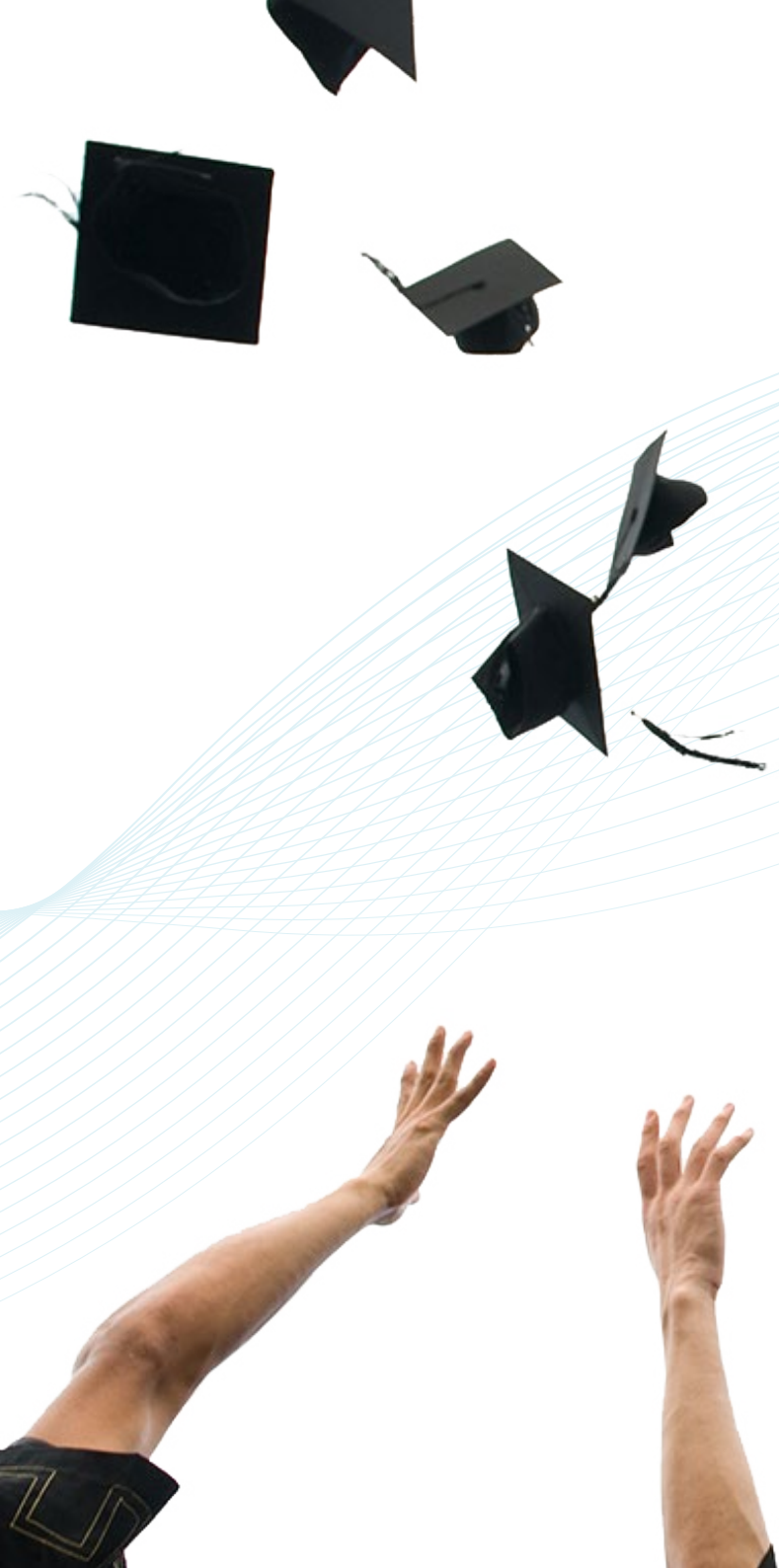
Assessment and Certification

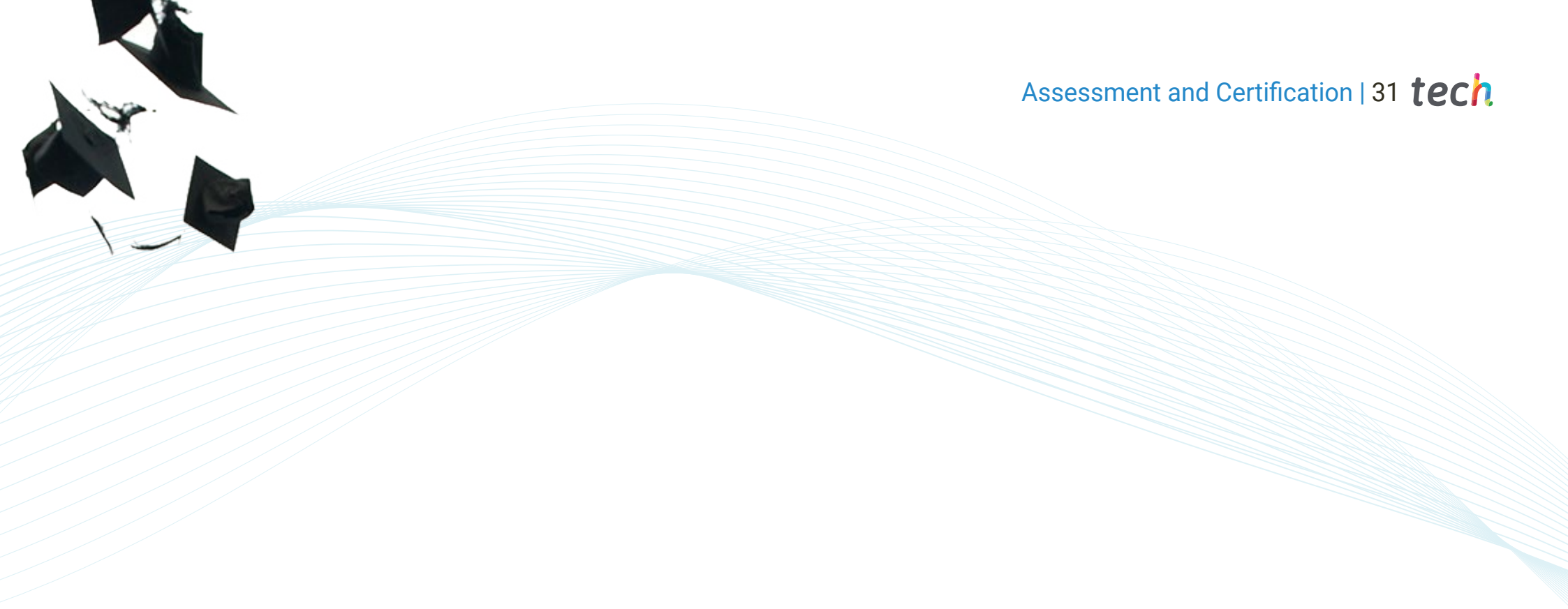
Each part of the exam accounts for 25% of the total grade. Candidates must obtain a minimum grade of 6 to pass each part of the course.

- To obtain an overall PASS in the exam, it is necessary to pass all the tests and obtain an average of more than 6.
- To obtain the overall grade of GOOD in the exam, you must pass all the tests with a grade higher than 6, and obtain an average between 7 and 8.9.
- To obtain the overall grade of EXCELLENT in the exam, you must pass all the tests with a grade higher than 6, and obtain an average between 9 and 10.
- Only those who have passed may request a certificate of aptitude issued by TECH Technological University.

The level will be considered acquired if the final total score is greater than or equal to 60% of the total possible score. No average will be made if a minimum of 60% of the possible score is not reached in each of the evaluated skills.

Certificates will only be issued if the level has been reached.





“

To obtain the certificate, a score equal to or higher than 6 must be obtained in each of the 4 parts of the exam"



Take your exam online, with an expert tutor who will accompany you throughout the process. Come and certify your level!"

Certification

After successfully passing the exam, the student will receive a certificate of recognition that guarantees their preparation and proficiency at this level of the CEFR.

tech technological university

This official certificate hereby acknowledges that

Mr./Ms. _____
has passed the corresponding tests for

CEFR B2 German Exam

This is a CEFR qualification
obtained on __/__/__

Tere Guevara
Tere Guevara Navarro
Dean

Unique TECH Code: AFWOR23S techtute.com/certificates

tech technological university

Official Examination - CEFR B2 German
Results obtained

Skills	Score
Listening comprehension	3/5
Reading comprehension and use of language	4/5
Written production	3.5/5
Oral production and interaction	4.2/5
Final Score	14.7/20

Tere Guevara
Tere Guevara Navarro
Dean

Issued on _____
Issued in _____
Certificate date _____
Identification number _____

Unique TECH Code: AFWOR23S techtute.com/certificates

*Apostille Convention. In the event that the student wishes to have their paper diploma issued with an apostille, TECH EDUCATION will make the necessary arrangements to obtain it, at an additional cost.

Instructions for the exam



Only candidates who have registered during the registration period and are on the official lists may sit for the examination.



It is compulsory to present a valid identification document or passport at the exam. No person without identification will be allowed access to the examination.



The language accreditation tests may be adapted to candidates with special needs. For this purpose, the type of disability (motor, visual, hearing, etc.) and the degree of disability, duly justified with a medical report, must be reported at the time of registration. Applications will be accepted depending on how far in advance the center is informed and the availability of resources at the center.



tech technological
university



CEFR
B2 German
Exam

CEFR
B2 German
Exam