

CEFR A2 German Exam





“

We prepare you for a global society characterized by the unstoppable expansion of new markets, extraordinary cultural, social and linguistic diversity, innovation and technology as generators of opportunities, immediacy and proximity, collaboration and constant change. We prepare you to join this new reality, by helping you achieve linguistic mastery”

tech technological
university



CEFR
A2 German
Exam

Website: www.techtute.com/school-of-languages/language-certification-exam/cefr-a2-german-exam

Index

01

Welcome

p. 4

02

Why Is it Important to Obtain
A2 Certification?

p. 8

03

Methodology and Criteria for
Exam Evaluation

p. 12

04

Who Can Take the Exam?

p. 28

05

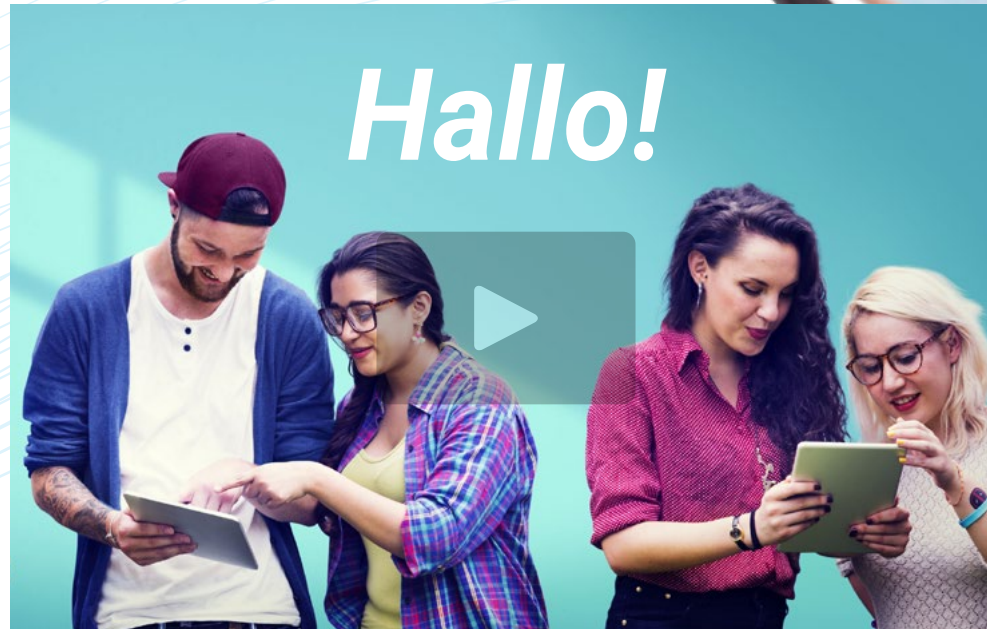
Assessment
and Certification

p. 30

01 Welcome

TECH's university language programs conform to the Common European Framework of Reference for Languages, which is a great motivation for all those who wish to certify their level of German. This is because the CEFR is the most important language reference standard in the world, and is accepted and highly valued by all types of private and public institutions.

For this reason, this A2 Level German certification exam is the best option for students, since it gives them access to a diploma that will be recognized in all types of institutional, academic or work-related procedures.





“

Language certificates adapted to CEFR standards are valid in numerous academic and employment institutions and procedures around the world"

Introduction

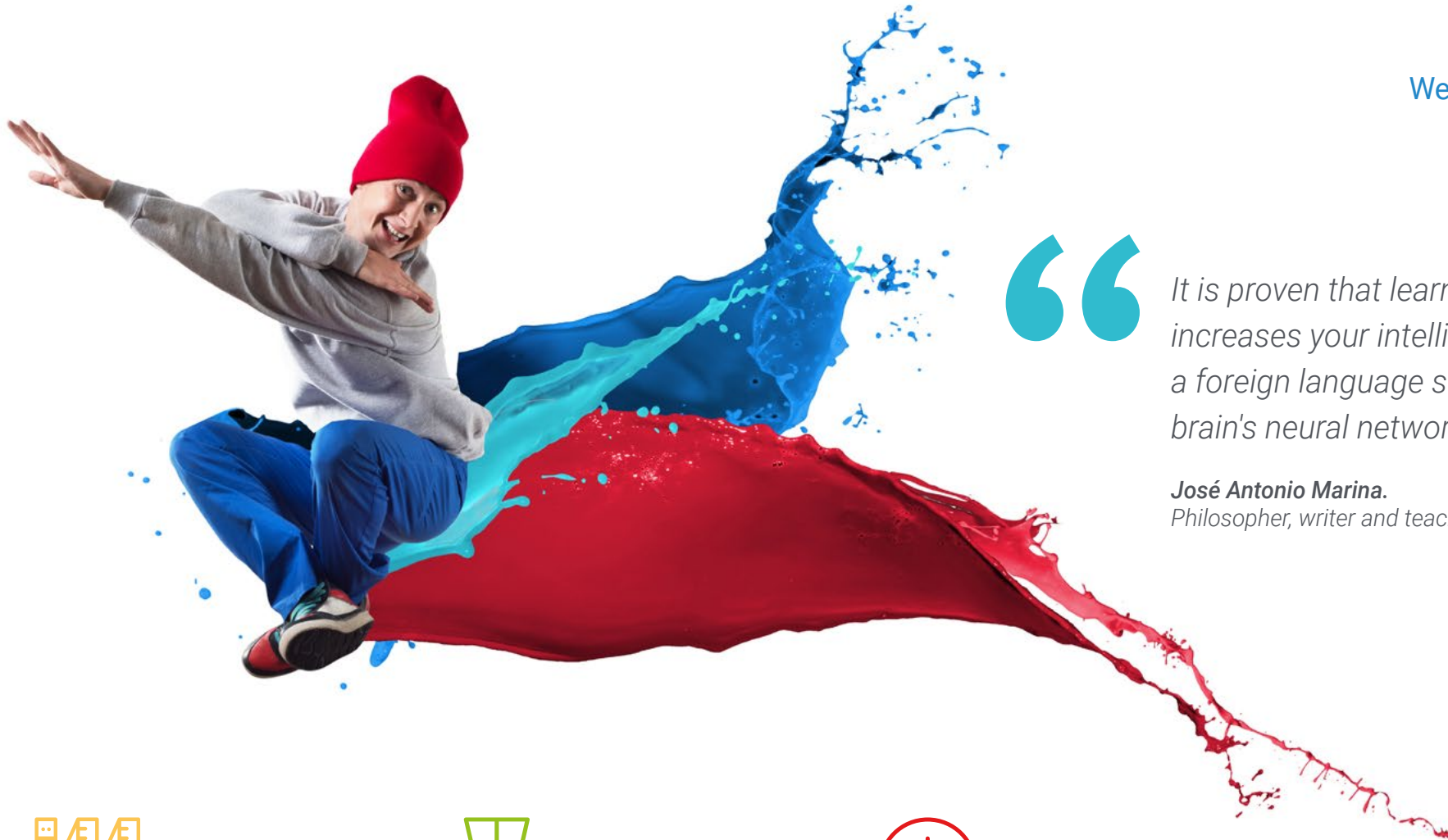
Today's world is connected through all kinds of social networks and communication tools that facilitate contact with friends, family or customers. In this context, mastering and being able to prove proficiency in a language as powerful and useful as German is essential and can have a positive impact on a professional level. For this reason, this university level test is essential for all those who wish to have a diploma certifying the possession of the A2 level of German.

In addition, it is an exam that is based on the Common European Framework of Reference for Languages system, which is one of the most important recognition methods in the world and is valid in all types of academic or professional processes.

Certify your level of German through the CEFR, the most important international language recognition system, and start accessing numerous professional opportunities.

Take the university exam comfortably from wherever and whenever you want, with the help of an individual examiner who will be at your disposal.





“

It is proven that learning languages increases your intelligence. Learning a foreign language strengthens the brain's neural networks”

José Antonio Marina.
Philosopher, writer and teacher.



Flexible and Tailored

Take your exam in person at any of our accredited locations or online from wherever you want.



No Stress

Are you nervous about waiting in long lines to register for the exam and take the different tests? At TECH you can register online and take your test with a tutor just for you.



No Waiting

Receive your certificate in record time and in digital format so you can always carry it with you.



02

Why Is it Important to Obtain A2 Certification?

Having an internationally recognized language certificate such as those offered by TECH is a great opportunity for students. This university exam at Level A2 leads to a diploma certifying German language proficiency according to the Common European Framework of Reference for Languages (CEFR). Thus, with this certificate it will be possible to apply for employment, institutional or academic processes such as scholarships or exchange programs.

But not only is it very useful in practical matters such as those mentioned above, but it also allows students to demonstrate their ability to communicate in this important European language, which is spoken not only in Germany but also in countries such as Austria, Switzerland and Italy.





“

*German is an essential language today.
Get certified and start receiving important
opportunities thanks to your mastery of this
language”*

TECH - Technological University

The Common European Framework of Reference for Languages is the only recognized and accredited system for assessing a student's level of proficiency. Although there are other validation systems, but they come from private institutions and are therefore not valid.

The CEFR establishes a single criterion to determine the difficulty of the courses and awards diplomas that are recognized throughout the European Union.

At TECH we offer you the test to obtain your level certificate based 100% on the CEFR, the only system recognized and accepted throughout Europe.

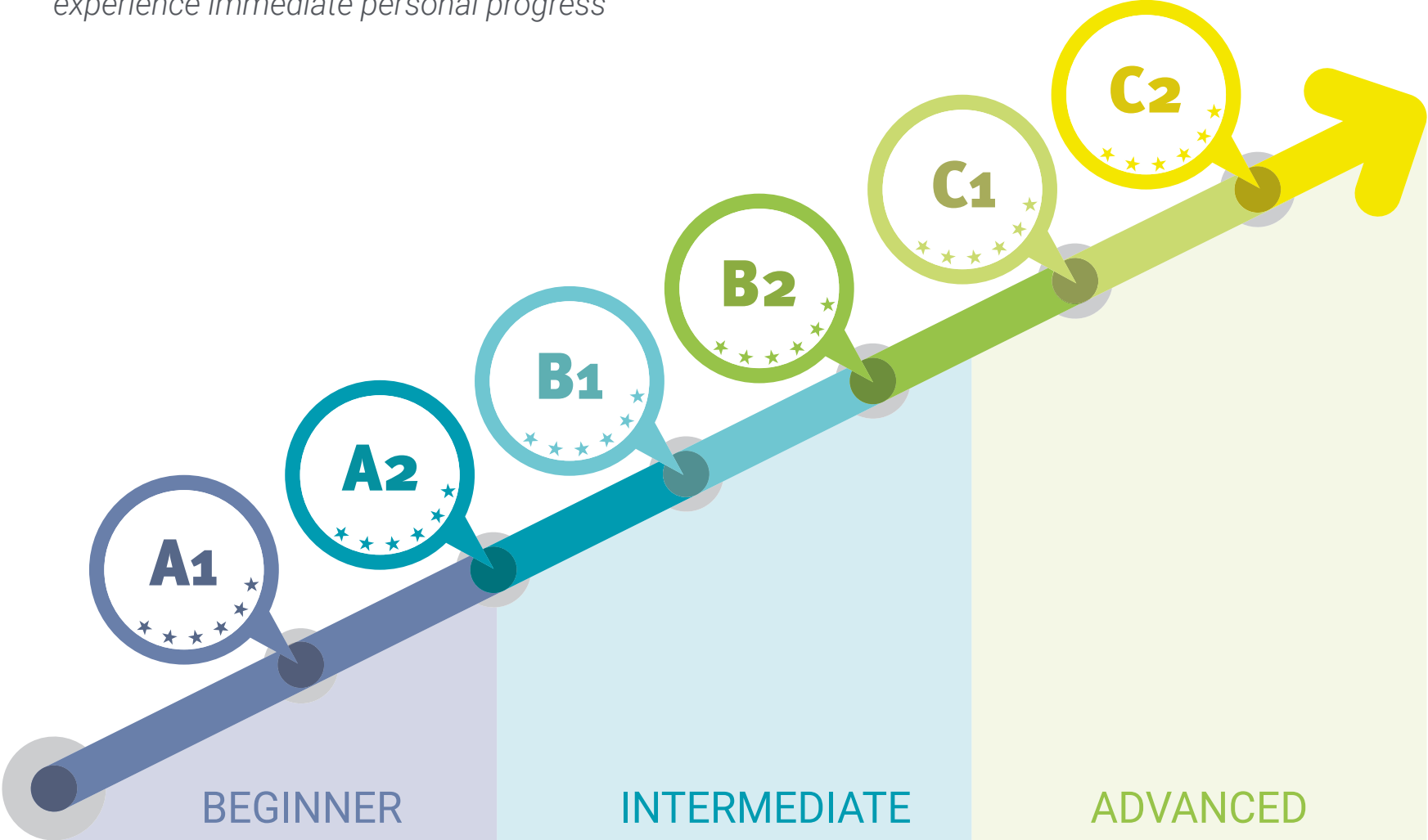
Add the diploma issued by TECH to your resume and stand out professionally thanks to this language certification.

Other language certification systems require the student to periodically renew their level accreditation. TECH's CEFR certificate gives you a diploma for life.





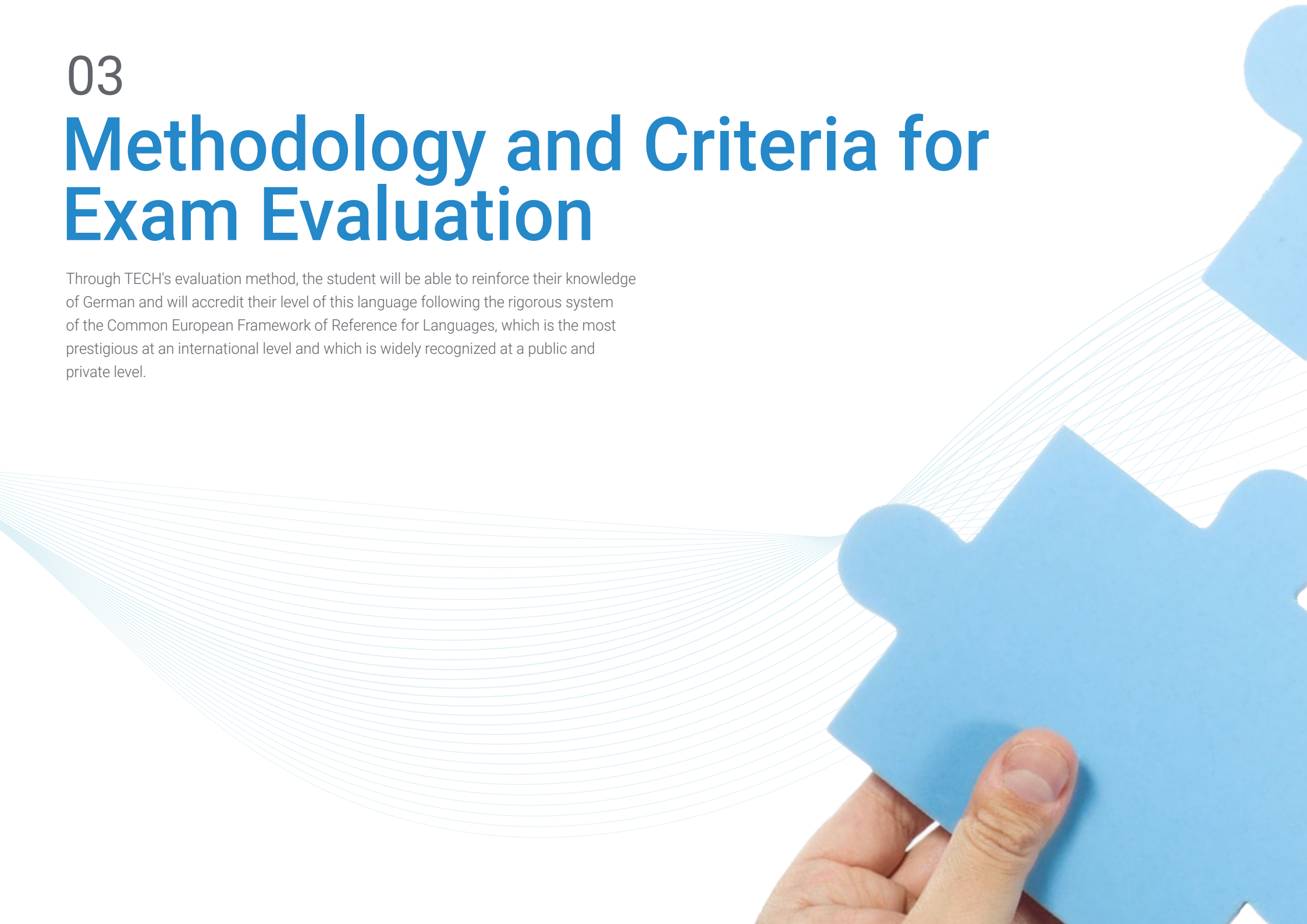
The CEFR is the main international reference for language recognition. Certify your German Level A2 with this TECH university exam and experience immediate personal progress"



03

Methodology and Criteria for Exam Evaluation

Through TECH's evaluation method, the student will be able to reinforce their knowledge of German and will accredit their level of this language following the rigorous system of the Common European Framework of Reference for Languages, which is the most prestigious at an international level and which is widely recognized at a public and private level.





“

TECH complies with these standards and bases its examination methodology 100% on the recommendations of the CEFR”

What are the A2 Level Skills?

Level A2 reflects the level referred to in the CEFR specification "Platform", i.e. a more advanced basic level than A1. It is at this level where most of the descriptors that expose social functions are found, such as, for example:

- Know how to use the usual forms of greetings and how to address others in a friendly manner
- Greet people, ask how they are doing, and be able to react to news.
- Perform well in very brief social exchanges
- Know how to ask and answer questions about what they do at work and in their spare time
- Know how to invite and respond to an invitation
- Be able to discuss what to do, where to go, and set up an appointment; make an offer and accept it.
- Perform simple transactions in stores, post offices or banks
- Know how to obtain simple travel information
- Use public transportation (buses, trains and cabs).
- Ask for basic information, ask questions and explain how to get to a place and buy tickets.
- Order and provide everyday goods and services





“

Benefit from a university certificate that you can obtain in a comfortable and agile way, valid all over the world"

01

Understand sentences and frequently used expressions related to areas of experience that are particularly relevant to them (basic information about themselves and their family, shopping, places of interest, occupations, etc.)

“

It proves that you are able to deal naturally with numerous communicative situations in German by passing this exam"



02

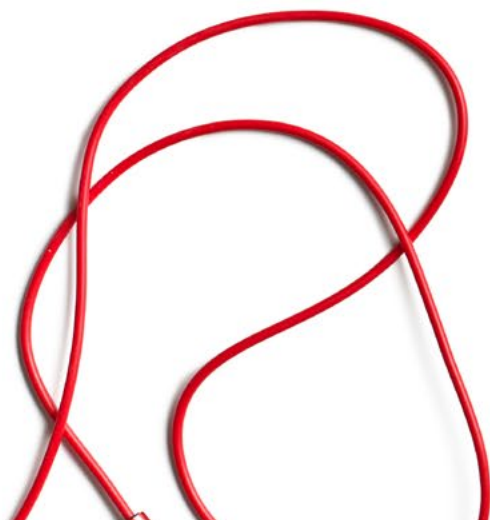
Communicate in simple, everyday tasks that require only simple and direct exchanges of information on familiar or routine matters

03

Describe in simple terms aspects of their background and environment, as well as issues related to their immediate needs

“

At TECH you can take your exam from home, with a personal tutor and with all the guarantees of a 100% CEFR certificate"



A2 level Self-Assessment Chart

What is a person with this level able to do?

Comprehension	Speaking	Writing
<p>Listening Comprehension</p> <ul style="list-style-type: none">♦ Understand sentences and the most common vocabulary on topics of personal interest (very basic personal and family information, shopping, place of residence, employment)♦ Capture the main idea of short, clear and simple messages and notices	<p>Oral Interaction</p> <ul style="list-style-type: none">♦ Communicate simple and routine tasks that require a simple and direct exchange of information about daily activities and issues♦ Very brief social exchanges, but usually unable to understand enough to carry on the conversation on their own <p>Oral Expression</p> <ul style="list-style-type: none">♦ Use a series of expressions and phrases to describe in simple terms your family and other people, your living conditions, your educational background, and your current or most recent job	<p>Written Expression</p> <ul style="list-style-type: none">♦ Write short, simple notes and messages related to their immediate needs♦ Write very simple personal letters, e.g., thanking someone for something.

Now is the time, certify your level and finally complete your resume with your German qualification. TECH makes it easy for you to get it.



Qualitative aspects of spoken language usage for Level A2

(According to the Common European Framework of Reference for Languages)

What is expected to be achieved with this level?

Scope

- ♦ Use structures composed of basic sentences with expressions, groups of a few words and memorized formulas, in order to communicate limited information in simple, everyday situations.

Correction

- ♦ Use some simple structures correctly, but still consistently making basic errors.

Fluency

- ♦ Make oneself understood with very brief expressions, although pauses, initial doubts and rephrasing are very evident.

Interaction

- ♦ Answer questions and respond to simple statements
- ♦ Indicate when a conversation is understood, but barely understand enough to carry on a conversation on their own accord.

Coherence

- ♦ Be able to link groups of words with simple connectors such as "and", "but" and "because".

Objectives

01

Listening comprehension objectives

The candidate is able to:

- ◆ Understand enough to be able to deal with specific needs as long as the speech is articulated clearly and at a slow pace.
- ◆ Understand sentences and expressions related to areas of immediate priority (e.g., very basic personal and family information, shopping, place of residence, employment) provided speech is articulated clearly and slowly.
- ◆ Generally identify the topic being discussed, as long as it is conducted slowly and clearly.
- ◆ Capture the main idea of short, clear and simple messages and statements.
- ◆ Understand simple instructions on how to get from one place to another, both on foot and by public transportation.
- ◆ Understand and extract essential information from short recorded passages dealing with everyday, predictable matters and spoken slowly and clearly.





02

Speaking objectives

The candidate is able to:

- Understand short, simple texts on everyday matters if they contain very frequent, everyday or work-related vocabulary.
- Understand short and simple texts containing very frequent vocabulary, including a good part of internationally shared vocabulary terms.
- Understand basic types of commonly used letters and faxes (forms, orders, confirmation letters, etc.) on everyday topics.
- Understand short and simple personal letters.
- Find specific and predictable information in everyday written material, such as advertisements, prospectuses, restaurant menus or menus, listings, and schedules.
- Locate specific information in listings and isolate the required information (e.g., knows how to use the "Yellow Pages" to search for a service or a business).
- Understand signs and signals found in public places, such as streets, restaurants, train stations, and workplaces, e.g., directions to a location, instructions, and hazard warnings
- Identify specific information in simple written material, such as letters, catalogs, and short newspaper articles describing specific events.

- Understand rules that are expressed at a simple level of language.
- Understand simple instructions for frequently used appliances, such as a public telephone.
- Identify the main idea of television news reporting events, accidents, etc., when there is visual support to complement the discourse
- Know when TV news has changed topics and get an idea of the main content.

03

Speaking objectives

The candidate is able to:

- Give a simple description or presentation of people, living or working conditions, daily activities, likes and dislikes in a short list of simple phrases and sentences.
- Tell stories or describe something through a simple relationship of elements. Describe everyday aspects of their environment; for example, people, places, a work or study experience. Give brief and basic descriptions of events and activities. Describe plans and appointments, customs, usual or past activities and personal experiences.



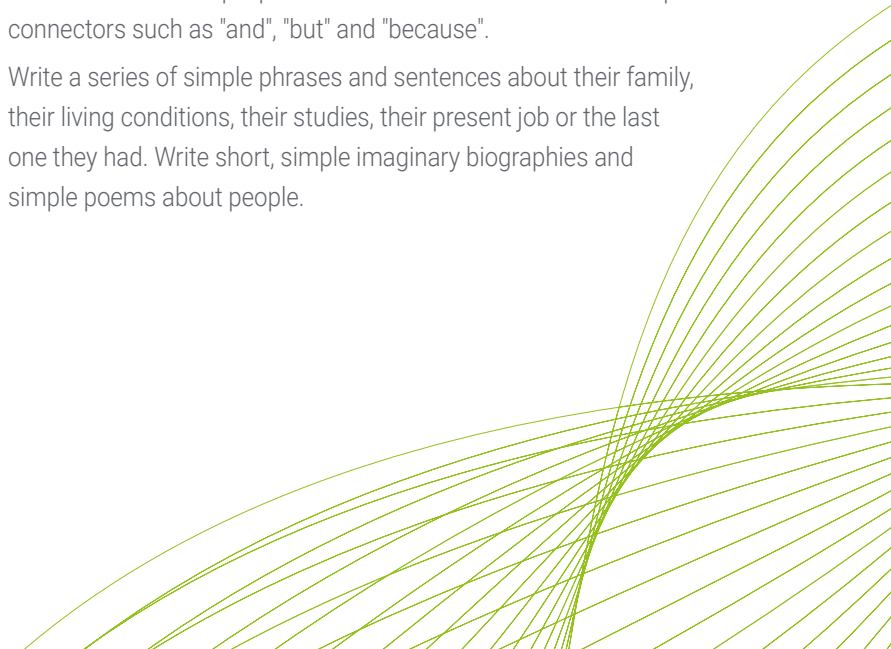
- Use simple, descriptive language to make brief statements about objects and possessions and to make comparisons. Explain what they like and dislike about something.
- Deliver rehearsed, very brief statements of predictable, learned content that are intelligible to listeners who are willing to concentrate.
- Deliver brief, rehearsed presentations on topics that are of importance in everyday life and briefly offer reasons and explanations for expressing certain opinions, plans, and actions
- Answer a limited number of questions with immediate and simple answers.

04

Writing objectives

The candidate is able to:

- Write a series of simple phrases and sentences linked with simple connectors such as "and", "but" and "because".
- Write a series of simple phrases and sentences about their family, their living conditions, their studies, their present job or the last one they had. Write short, simple imaginary biographies and simple poems about people.



Features of the A2 German Exam

1 What does the TECH Technological University test assess?

- ♦ The contents of the exams and the evaluation criteria will be those corresponding to the CEFR descriptors.
- ♦ No published assignments or test materials will be used.
- ♦ The four skills (oral and written expression, oral and written comprehension) will be evaluated together or separately. Use of language tasks may also be included.
- ♦ All test tasks, with the possible exception of the use of language tasks, will be close to real-world tasks and the text materials will be authentic, as far as possible and according to the level tested.

2 How long does the test last?

- ♦ The exams, whatever the level, shall not be less than 120 minutes or more than 165 minutes long.



3 How is the test carried out?

- The oral and written comprehension tests, as well as the written expression test, are conducted via computer.
- The written and oral expression tests, whenever possible, will be evaluated by two examiners according to the established procedures.
- The oral expression test will consist of an interview, the questions of which will meet the objectives and evaluation parameters established by MCER.

Candidates must obtain at least a 6 on each part of the exam in order to obtain a PASS grade.

If you do not pass all areas, you will not get your certificate, but we will give you a detailed report of your skills in each area and competency.

4 What are the assessment criteria?

With regard to grades, TECH, following the recommendations, uses the following criteria:



Candidates who obtain at least 60% in each of the 4 parts of the exam will pass the exam. Based on the overall score, a grade will be awarded that will appear on the certificate issued by TECH, according to the following scale:



In the event that a candidate does not pass any of the 4 parts of the test, they must retake the entire exam.

Features of the A2 TECH Exam

Below is a table with the sections, characteristics and duration of the different parts of the test.

Duration	Sections		Instructions
	Skill	Time	
A2 120-165 minutes	Speaking	Monologue and directed questions	Instructions in mother tongue
	Listening comprehension	Short audios, monologues or dialogues	
	Writing	Various written expression activities; may include use of language activities.	
	Reading comprehension	Various reading comprehension activities	



Knowing the nature of the test before you take it will facilitate optimal preparation”

Structure of the TECH A2 exam

It consists of 4 parts:

Listening, Speaking, Reading and Writing

The total duration of the exam is 120 to 165 minutes, with the first three parts taking place one after the other (1st Listening, 2nd Writing, 3rd Reading). There will be a minimum of 20 minutes of rest between the first three parts and the 4th part (Speaking), which can be done on the same day, or on a different day, with a maximum limit of 7 days after the other block has been completed.

Listening (Duration 30-40 minutes)

Listening consists of 3 exercises, each of which is based on an audio recording that can be a monologue or a conversation between 2 or more people. Exercises include multiple response, sentence completion, completion charts, graphs or diagrams, and short answers in one or two sentences

Reading (Duration: 40-60 minutes)

It consists of 40 questions grouped in 3 sections. Each text is between one and two pages long and several questions are asked about it. The texts are actual excerpts from books, research articles, newspapers and scientific journals. The type of questions, as in the oral part, is highly varied: multiple answers, completing tables, graphs or diagrams, locating information in the text, indicating the writer's opinion, etc.

Writing (Duration: 40-50 minutes)

This part consists of two exercises, a 30-40 word essay and a 40-50 word essay. For the 30-40 word essay, a short report on a piece of information provided to the examinee in any format (text, graph, table or diagram) is usually requested.

Regarding the 40-50 word essay, a piece of information is usually presented very briefly (a couple of lines), followed by a statement about it, and then the candidate is asked to explain whether they agree or disagree with the statement, briefly stating the necessary arguments. The second exercise accounts for two thirds of the "Writing" grade and the first exercise for one third.

Speaking (Duration: 10-15 minutes)

In this last part, a conversation is held with an examiner, and it is designed to be as realistic as possible. It is divided into 3 subsections. In the first, the candidate responds to personal, family and/or everyday questions. In the second, the candidate discusses a specific topic indicated by the examiner.

In this case, the ability to produce a coherent and orderly discourse is valued. In the third and last one, both the examiner and the candidate have a conversation on a specific topic, where oral interaction and discussion skills are assessed. The entire speaking part is recorded for later review purposes.

Sections						
Duration	Skills	Observations	Items	Tasks	Time	Instructions
A2 120-165 minutes	Oral expression and interaction	Monologue and directed questions. Oral examinations must be recorded		Minimum 2	10-15 minutes	Instructions in mother tongue
	Listening comprehension	Short audios which may be short dialogues or monologues related to topics of the level.	Minimum of 5 items and maximum of 10 items per task. Minimum total of 15 items, recommended 20	Minimum 2, maximum 4. Dichotomous tasks are not accepted.	30-40 minutes	
	Written Expression	Various writing activities.	Minimum 30 words, maximum 80 words	Minimum of 2 tasks	40-50 minutes	
	Reading Comprehension	Several reading comprehension activities with a minimum of 500 and a maximum of 800 words in total	Minimum of 5 items and maximum of 10 items per task. Minimum total of 15 items, recommended 20	Minimum 2, maximum 4. Dichotomous tasks are not accepted.	40-60 minutes	

04

Who Can Take the Exam?

Candidates for the A2 level accreditation test may be members of the University Community, as well as nationals or foreigners (over 16 years of age) who wish to accredit their level of linguistic skill for academic, educational, professional or personal purposes.

Although the interests and motivations of our students are different, they all have a common goal: to improve and certify their level of German.





“

TECH provides you with access to your exam and helps you to pass it. Don't keep thinking about it and certify your level!!”

Why are our students interested in certifying their level?



Academic 25%

- ♦ Access to a university degree
- ♦ Access to doctoral studies
- ♦ Access to an official Master's Degree or postgraduate training program



Educational 13%

- ♦ Continuation of language studies
- ♦ Improve language skills



Personal 12%

- ♦ Improve CV
- ♦ Confirmation of skills



Professional 50%

- ♦ Access to a new position
- ♦ Promotion or job improvement





“

TECH supports you to take the exam online, putting all the means at your disposal so that you can focus on taking the test”

05

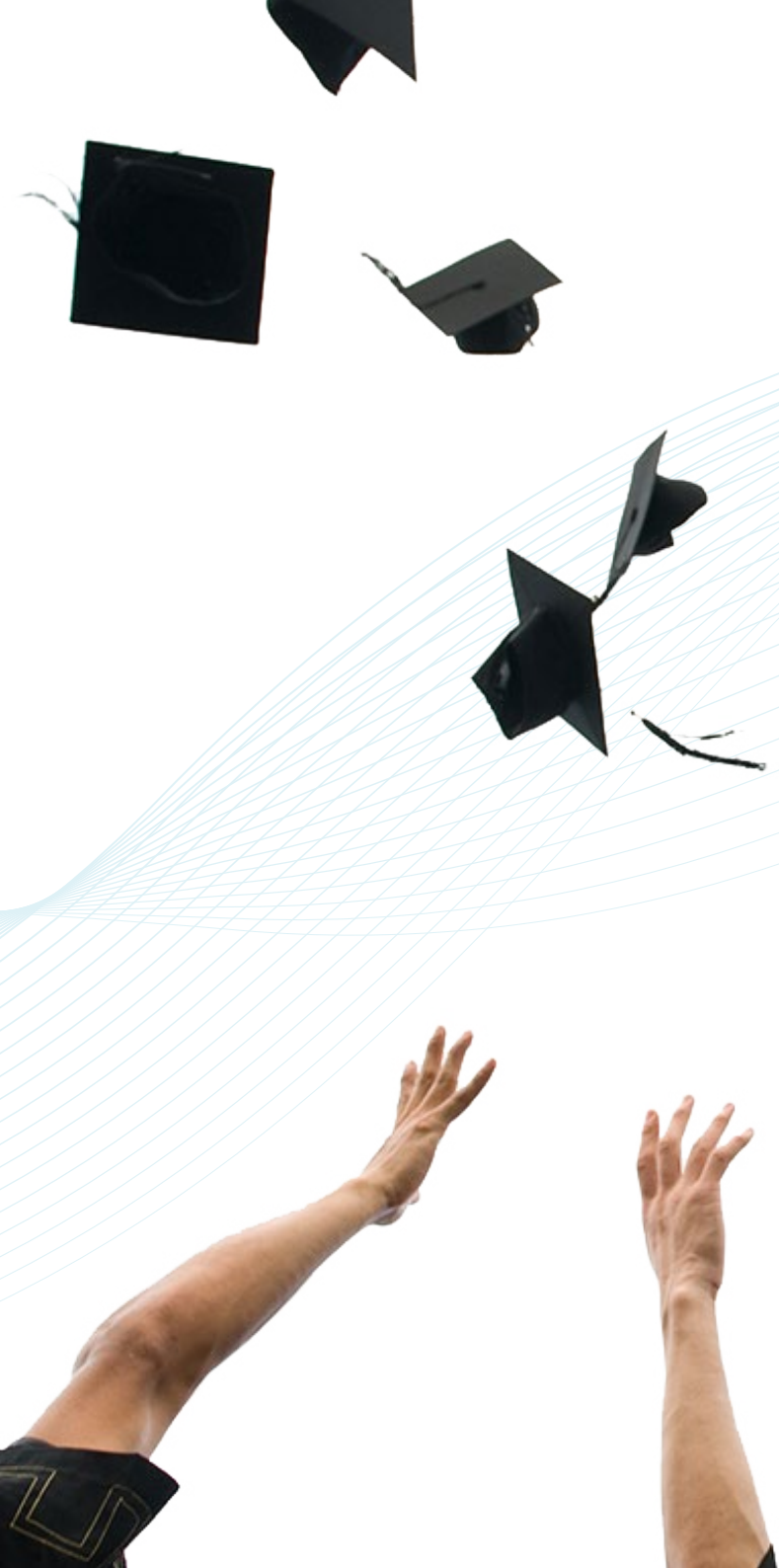
Assessment and Certification

Each part of the exam accounts for 25% of the total grade. In order to pass each part, it will be necessary to obtain a grade of at least 6.

- ♦ To obtain an overall PASS in the exam, it is necessary to pass all the tests and obtain an average of more than 6.
- ♦ To obtain the overall grade of GOOD in the exam, you must pass all the tests with a grade higher than 6, and obtain an average between 7, 8 and 9
- ♦ To obtain the overall grade of EXCELLENT in the exam, you must pass all the tests with a grade higher than 6 and obtain an average between 9 and 10
- ♦ Only those who have obtained the qualification of PASS may request a certificate of aptitude issued by TECH Technological University.

The level will be considered acquired if the final total score is greater than or equal to 60% of the total possible score. No average will be made if a minimum of 60% of the possible score is not reached in each of the evaluated skills.

Certificates will only be issued if the level has been reached.





“

To obtain the certificate, a score equal to or higher than 6 must be obtained in each of the 4 sections of the exam”



Take your exam online, with an expert tutor who will accompany you throughout the process. Come and certify your level!"

Certification

After successfully passing the exam, the student will receive a certificate of recognition that guarantees their preparation and proficiency at this level of the CEFR.



*Apostille Convention. In the event that the student wishes to have their paper diploma issued with an apostille, TECH EDUCATION will make the necessary arrangements to obtain it, at an additional cost.

Instructions for the exam



Only candidates who have registered during the registration period and are on the official lists may sit for the examination.



It is compulsory to present a valid identification document or passport at the exam. No person without identification will be allowed access to the examination.



The language accreditation tests may be adapted to candidates with special needs. For this purpose, the type of disability (motor, visual, hearing, etc.) and the degree of disability, duly justified with a medical report, must be reported at the time of registration. Applications will be accepted depending on how far in advance the center is informed and the availability of resources at the center.



tech technological
university



CEFR
A2 German
Exam

CEFR
A2 German
Exam