

CEFR A2 Portuguese Exam



“

We prepare you for a global society characterized by the unstoppable expansion of new markets, extraordinary cultural, social and linguistic diversity, innovation and technology as generators of opportunities, immediacy and proximity, collaboration and constant change. We prepare you to join this new reality, by helping you achieve linguistic mastery"

tech technological
university



CEFR
A2 Portuguese
Exam

Website: www.techtitute.com/school-of-languages/language-certification-exam/language-certification-exam-a2-portuguese

Index

01

Welcome

pág.4.

02

Why Is it Important to Obtain
A2 Certification?

p. 8

03

Methodology and Criteria for
Exam Evaluation

p. 12

04

Who Can Take the Exam?

p. 28

05

Assessment
and Certification

p. 32

01 Welcome

This TECH level test offers the possibility of certifying your A2 level of Portuguese according to the Common European Framework of Reference for Languages. Portuguese, especially its Brazilian variant is one of the most important languages today and being able to accredit your skills in any level of the language opens many doors, both personal and professional. For this reason, this exam is essential for all those who wish to progress in the use of Brazilian Portuguese.





“

Certify your Portuguese Level A2 with TECH and obtain the globally valid and recognized accreditation in line with the CEFR”

Introduction

Portuguese is a fashionable language thanks to the enormous cultural and economic power of Brazil today. Therefore, improving and certifying your level of Portuguese can lead to numerous professional or academic opportunities making this the right time to take the A2 Level exam and achieve the desired accreditation.

Are you ready? At TECH we offer you the exam to finally prove your level of Portuguese

TECH has thoroughly prepared the language exam course, in an individualized way and according to the CEFR guidelines





“

It is proven that learning languages increases your intelligence. Learning a foreign language strengthens the brain's neural networks”

José Antonio Marina.
Philosopher, writer and teacher.



Flexible and Tailored

Take your Language Certification Exam in person at any of our accredited locations or online from wherever you want.



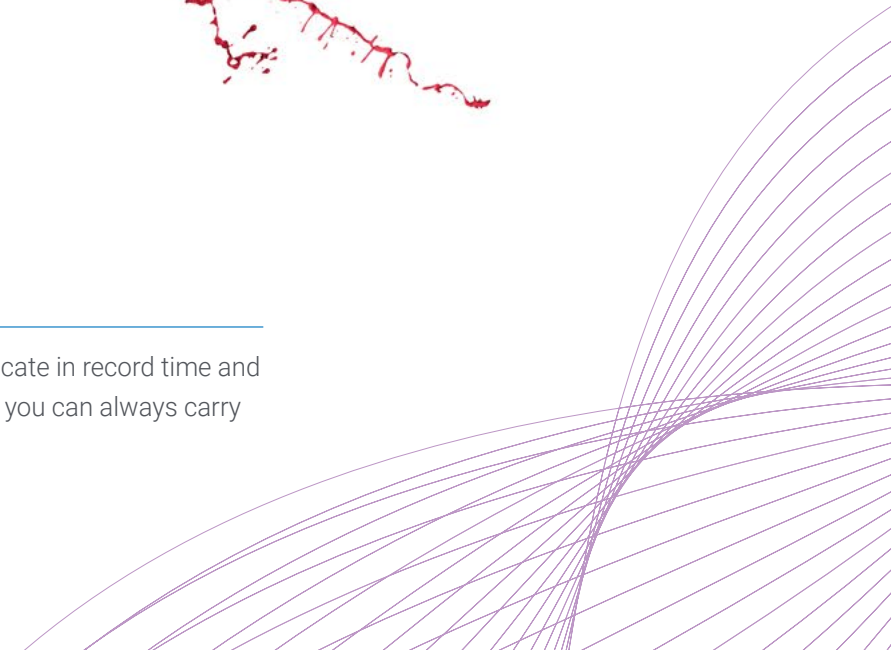
No Stress

Are you nervous about waiting in long lines to register for the exam and take the different tests? At TECH you can register online and take your test with a tutor just for you.



No Waiting

Receive your certificate in record time and in digital format so you can always carry it with you.



02

Why Is it Important to Obtain A2 Certificate?

Certification in a foreign language is essential to be able to demonstrate proficiency for new professional and academic opportunities. Portuguese, specifically that of Brazil, has become more relevant in recent years due to the country's economic and industrial growth.





“

Level A2 Portuguese is an entry requirement in many academic programs and professional processes in Brazil, so this university exam will allow you to enjoy the best options to achieve your goals”

tech 10 | Why Is it Important to Obtain A2 Certificate?

TECH Technological University

The Common European Framework of Reference for Languages is the only recognized and accredited system for assessing a student's level of proficiency. Although there are other certification systems, these come from private institutions and are, therefore, not valid. The CEFR establishes a single criterion to determine the difficulty of the courses and awards certificates that are recognized throughout the European Union.

At TECH we offer you the test to obtain your level certificate based 100% on the CEFR, the only system recognized and accepted throughout Europe.

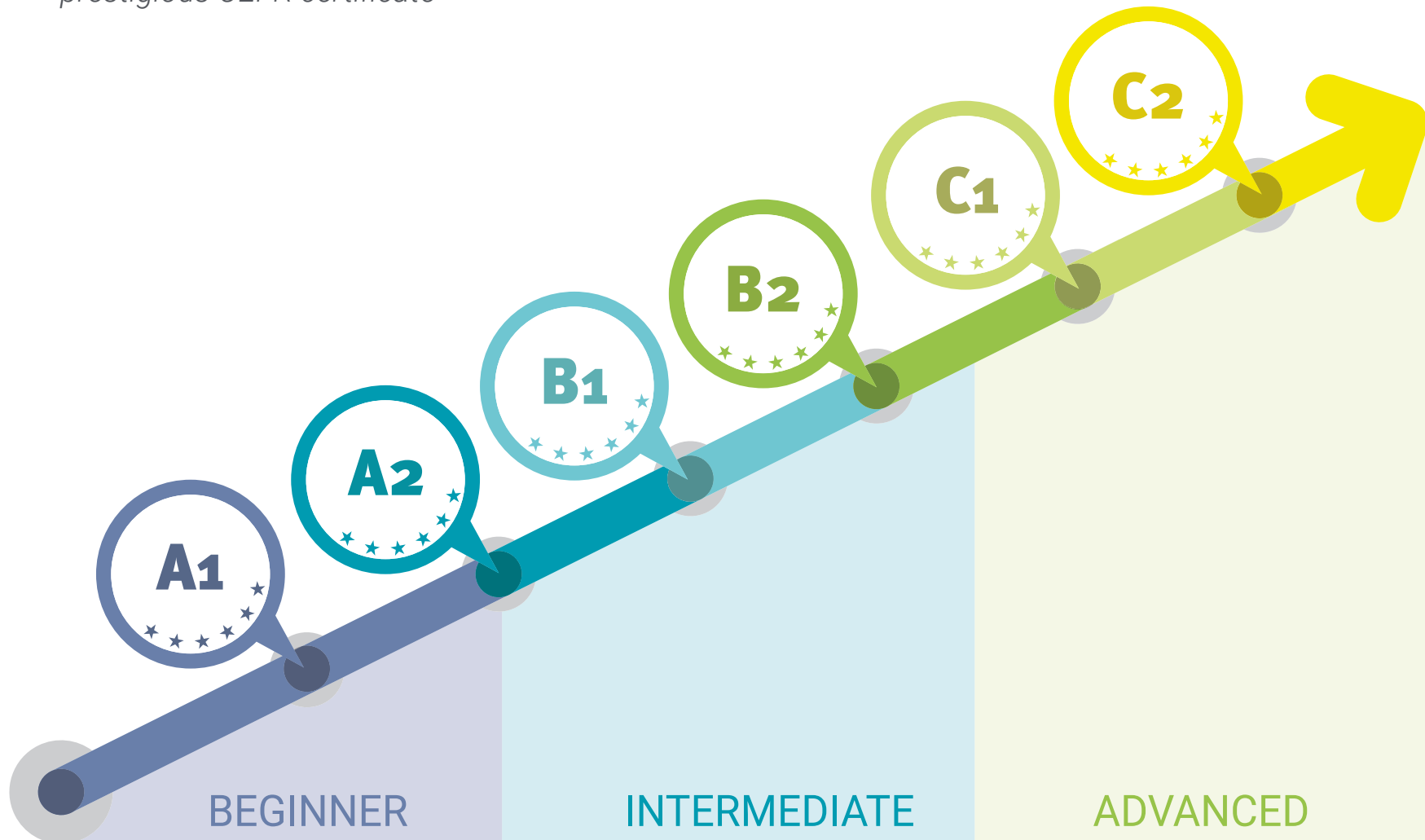
CEFR language certificates are the most in demand worldwide. Pass this university test and get yours

Other private language certification systems require students to periodically recertify their level of proficiency. TECH's CEFR certificate is valid for life



“

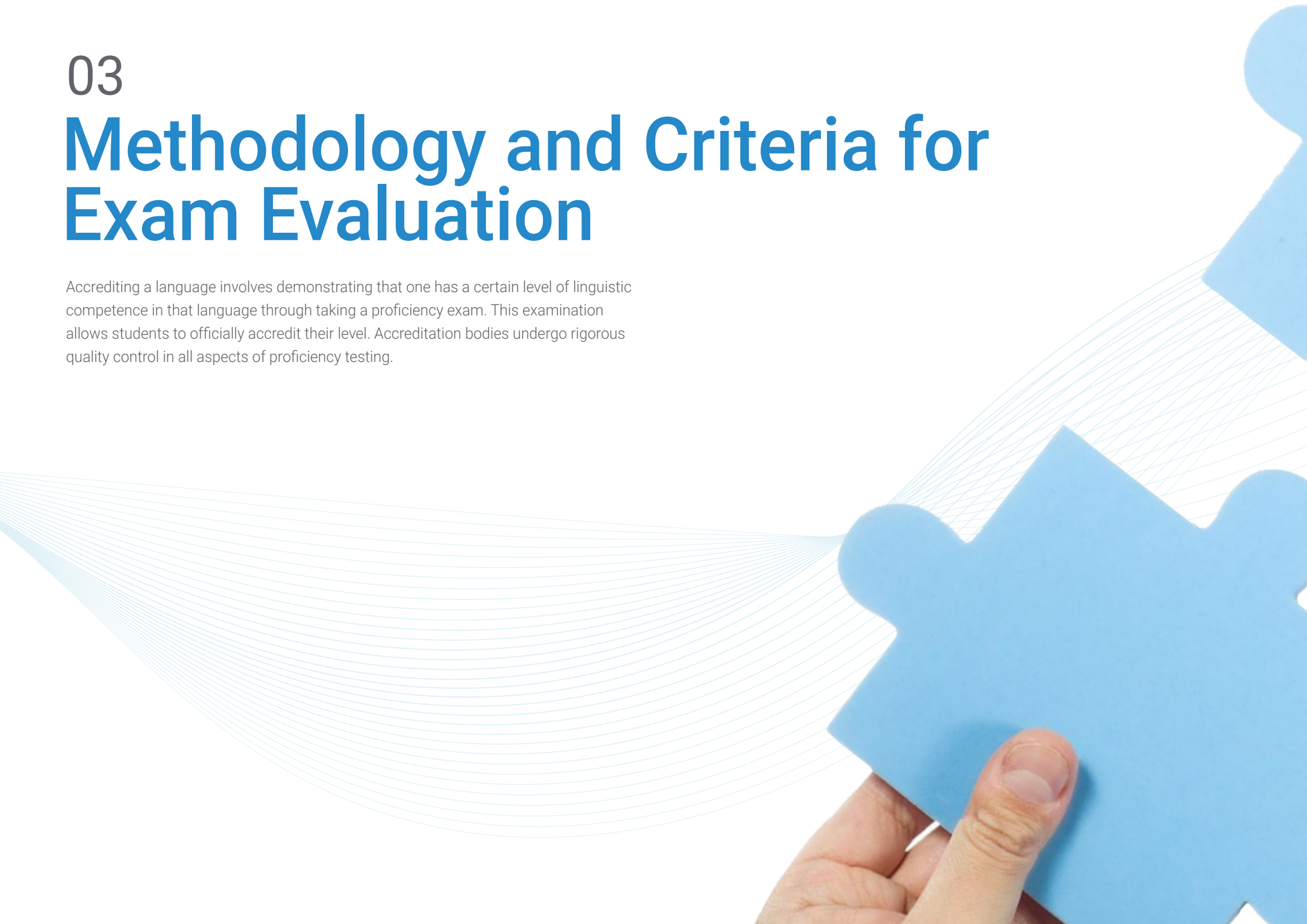
Improve your resume thanks to this university exam, which will give you a prestigious CEFR certificate”



03

Methodology and Criteria for Exam Evaluation

Accrediting a language involves demonstrating that one has a certain level of linguistic competence in that language through taking a proficiency exam. This examination allows students to officially accredit their level. Accreditation bodies undergo rigorous quality control in all aspects of proficiency testing.





“

TECH complies with these standards and bases its examination methodology 100% on the recommendations of the CEFR”

What are the A2 Level Skills?

Level A2 reflects the level referred to in the CEFR specification "Platform", i.e. a more advanced basic level than A1. It is at this level where most of the descriptors that expose social functions are found, such as, for example:

- ♦ Know how to use the usual forms of greetings and how to address others in a friendly manner
- ♦ Greet people, asking how they are doing, and be able to react to news.
- ♦ Perform well in very brief social exchanges
- ♦ Know how to ask and answer questions about what they do at work and in their spare time
- ♦ Know how to invite and respond to an invitation
- ♦ Be able to discuss what to do, where to go, and set up an appointment; make an offer and accept it
- ♦ Perform simple transactions in stores, post offices or banks
- ♦ Know how to obtain simple travel information
- ♦ Use public transportation (buses, trains and cabs)
- ♦ Ask for basic information, ask questions and explaining how to get to a place and buy tickets
- ♦ Order and provide everyday goods and services





“

Benefit from a university certificate that you can obtain in a convenient and straight forward way, valid all over the world”

At this level, as defined by the Common European Framework of Reference for Languages, students progress in language skills to develop what are considered "Basic User" skills with the ability to:

01

Understand sentences and frequently used expressions related to areas of experience that are particularly relevant to them (basic information about themselves and their family, shopping, places of interest, occupations, etc.)

“

Certificates from other language schools are only valid in the country of origin, neither in Europe nor in the rest of the world. That's why you need a CEFR qualification with TECH: It's valid worldwide!



02

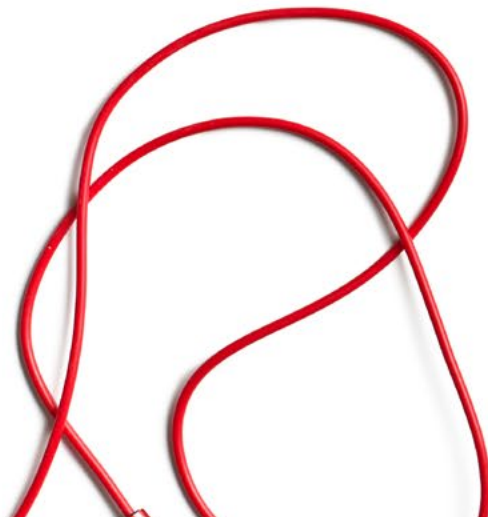
Communicate in simple, everyday tasks that require only simple and direct exchanges of information on familiar or routine matters

03

Describe in simple terms aspects of their background and environment, as well as issues related to their immediate needs

“

At TECH you can take your exam from home, with a personal tutor and with all the guarantees of a 100% CEFR certificate”



A2 level Self-Assessment Chart

What is a person with this level able to do?

Comprehension	Speaking	Writing
<p>Listening comprehension</p> <ul style="list-style-type: none">• Understand sentences and the most common vocabulary on topics of personal interest (very basic personal and family information, shopping, place of residence, employment)• Capture the main idea of short, clear and simple messages and notices	<p>Oral interaction</p> <ul style="list-style-type: none">• Communicate simple and routine tasks that require a simple and direct exchange of information about daily activities and issues• Carry out very brief social exchanges, but usually unable to understand enough to carry on the conversation on their own	<p>Written Expression</p> <ul style="list-style-type: none">• Write short, simple notes and messages related to their immediate needs• Write very simple personal letters, e.g., thanking someone for something
<p>Reading Comprehension</p> <ul style="list-style-type: none">• Read very short and simple texts• Find specific and predictable information in simple, everyday written material, such as advertisements, prospectuses, menus and schedules, and understanding short, simple personal letters	<p>Oral expression</p> <ul style="list-style-type: none">• Use a series of expressions and phrases to describe in simple terms their family and other people, their living conditions, educational background, and their current or most recent job	

Now is the time, certify your level and finally complete your resume with your Portuguese qualification. At TECH we make it easy for you to get it



Qualitative aspects of spoken language usage for Level A2 (According to the Common European Framework of Reference for Languages)

What is expected to be achieved with this level?

Scope

- ♦ Use structures composed of basic sentences with expressions, groups of a few words and memorized formulas, in order to communicate limited information in simple, everyday situations

Correction

- ♦ Use some simple structures correctly, but still consistently make basic errors

Fluency

- ♦ Make oneself understood with very brief expressions, although pauses, initial doubts and rephrasing are very evident

Interaction

- ♦ Answer questions and respond simple statements
- ♦ Indicate when a conversation is understood, but barely understand enough to carry on a conversation on their own accord

Coherence

- ♦ Be able to link groups of words with simple connectors such as "and", "but" and "because"

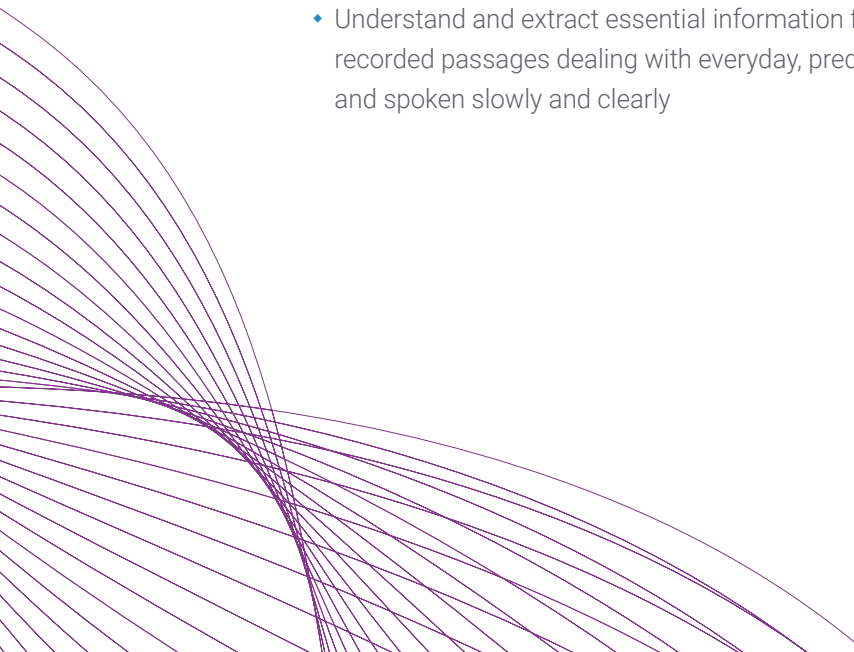
Objectives

01

Listening comprehension objectives

The candidate is able to:

- ◆ Understand enough to be able to deal with specific needs as long as the speech is articulated clearly and at a slow pace
- ◆ Understand sentences and expressions related to areas of immediate priority (e.g., very basic personal and family information, shopping, place of residence, employment) provided speech is articulated clearly and slowly
- ◆ Generally identify the topic being discussed, if it's conducted slowly and clearly
- ◆ Capture the main idea of short, clear and simple messages and statements
- ◆ Understand simple instructions on how to get from one place to another, both on foot and by public transport
- ◆ Understand and extract essential information from short recorded passages dealing with everyday, predictable matters and spoken slowly and clearly





02

Reading comprehension objectives

The candidate is able to:

- Understand short, simple texts on everyday matters if they contain very common, everyday or work-related vocabulary
- Understand short and simple texts containing very common vocabulary, including a good part of internationally shared vocabulary terms
- Understand basic types of commonly used letters and faxes (forms, orders, confirmation letters, etc.) on everyday topics
- Understand short and simple personal letters
- Find specific and predictable information in everyday written material, such as advertisements, prospectuses, restaurant menus or menus, listings, and schedules
- Locate specific information in listings and isolate the required information (e.g., knows how to use the "Yellow Pages" to search for a service or a business)
- Understand signs and signals found in public places, such as streets, restaurants, train stations, and workplaces, e.g., directions to a location, instructions, and hazard warnings
- Identify specific information in simple written material, such as letters, catalogs, and short newspaper articles describing specific events

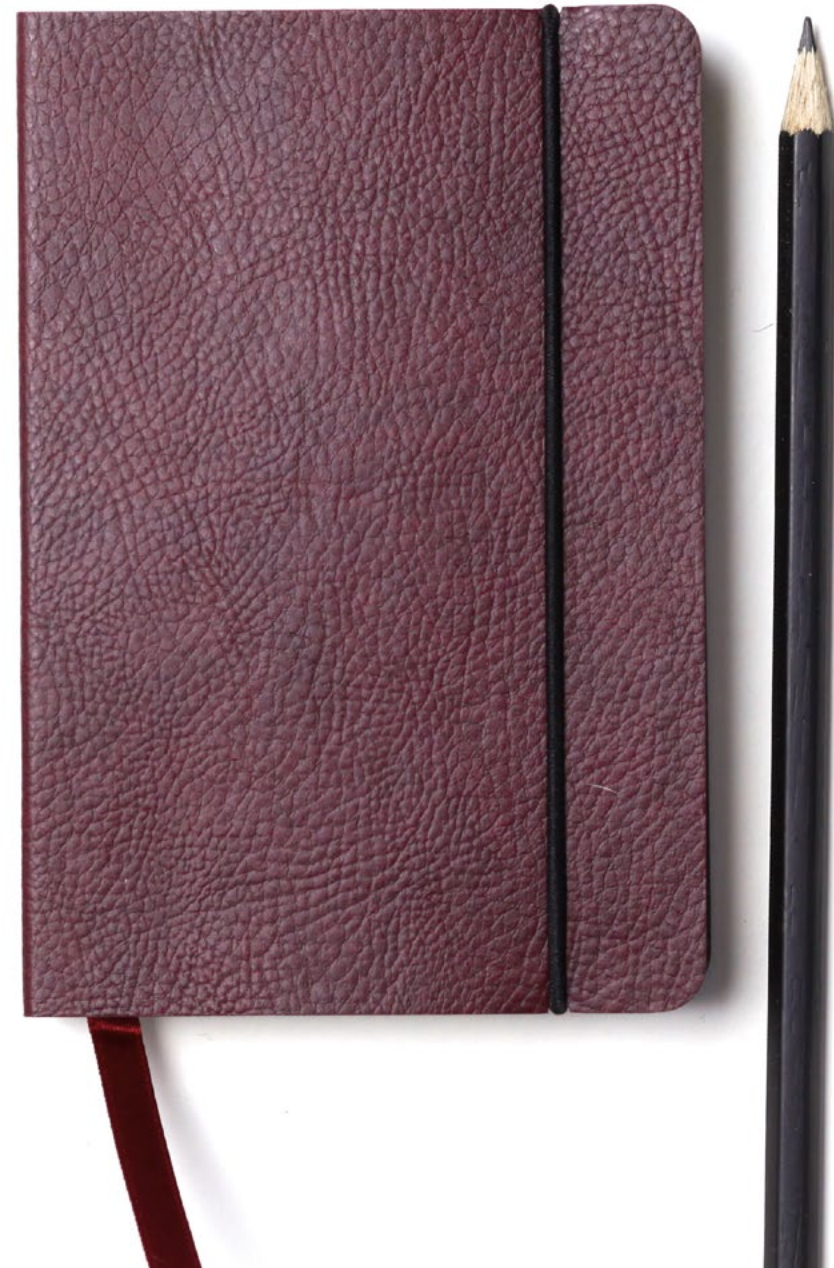
- ♦ Understand rules that are expressed at a simple level of language
- ♦ Understand simple instructions for frequently used appliances, such as a public telephone
- ♦ Identify the main idea of television news reporting events, accidents, etc., when there is visual support to complement the discourse
- ♦ Know when TV news has changed topics and get an idea of the main content

03

Speaking objectives

The candidate is able to:

- ♦ Give a simple description or presentation of people, living or working conditions, daily activities, likes and dislikes in a short list of simple phrases and sentences
- ♦ Tell stories or describe something through a simple relationship of elements. Describe everyday aspects of their environment; for example, people, places, a work or study
- ♦ Give brief and basic descriptions of events and activities. Describe plans and appointments, customs, usual or past activities and personal experiences



- ♦ Use simple, descriptive language to make brief statements about objects and possessions and to make comparisons
- ♦ Deliver rehearsed, very brief statements of predictable, learned content that are intelligible to listeners who are willing to concentrate
- ♦ Deliver brief, rehearsed presentations on topics that are of importance in everyday life and briefly offer reasons and explanations for expressing certain opinions, plans, and actions
- ♦ Answer a limited number of questions with immediate and simple answers

04

Writing objectives

The candidate is able to:

- ♦ Write a series of simple phrases and sentences linked with simple connectors such as "and", "but" and "because"
- ♦ Write a series of simple phrases and sentences about your family, your living conditions, your studies, your present job or the last job you held. Write short, simple imaginary biographies and simple poems about people



Features of the A2 Portuguese Exam

1 What does the TECH Technological University Exam Assess?

- ♦ The contents of the exams and the evaluation criteria will be those corresponding to the CEFR descriptors
- ♦ No published assignments or test materials will be used
- ♦ The four skills (oral and written expression, oral and written comprehension) will be evaluated together or separately. Use of language tasks may also be included
- ♦ All test tasks, with the possible exception of the use of language tasks, will be close to real-world tasks and the text materials will be authentic, as far as possible and according to the level tested

2 How long does the test last?

- ♦ The duration of the exams, whatever the certified level, shall not be less than 120 minutes or more than 165 minutes



3 How is the test carried out?

- The oral and written comprehension tests, as well as the written expression test, are conducted via computer
- The oral expression test consists of an interview with two examiners, whenever possible, that is recorded
- The written and oral expression tests, whenever possible, will be evaluated by two examiners according to the procedures established by TECH

Candidates must obtain at least a 6 on each part of the exam in order to obtain a PASS grade

If you do not pass all areas, you will not get your certificate but we will give you a detailed report of your skills in each area and competency

4 What are the assessment criteria?

With regard to grades, TECH, following the recommendations, uses the following criteria:



Candidates who obtain at least 60% in each of the 4 parts of the exam will pass the exam. Based on the overall score, a grade will be awarded that will appear on the certificate, according to the following scale:



In the event that a candidate does not pass any of the 4 parts of the test, they must retake the entire exam.

Structure, duration and weighting of the 4 parts of the examination

Below is a table with the sections, characteristics and duration of the different parts of the test.

Duration	Sections		Instructions	
	Skill	Time		
A2 120-165 minutes	Speaking	Monologue and directed questions	10-15 minutes	Instructions in mother tongue
	Listening comprehension	Short audios, monologues or dialogues	30-40 minutes	
	Writing	Various written expression activities; may include use of language activities.	40-50 minutes	
	Reading comprehension	Various reading comprehension activities	40-60 minutes	



Knowing the nature of the test before you take it will facilitate optimal preparation"

Structure of the Level A2 Portuguese exam

It consists of 4 parts:

Listening, Speaking, Reading and Writing

The total duration of the exam is 120 to 165 minutes, with the first three parts taking place one after the other (1st Listening, 2nd Writing, 3rd Reading). There will be a minimum of 20 minutes of rest between the first three parts and the 4th part (Speaking), which can be done on the same day, or on a different day, with a maximum limit of 7 days after the other block has been completed.

Listening (Duration 30-40 minutes)

Listening consists of 3 exercises, each of which is based on an audio recording that can be a monologue or a conversation between 2 or more people. Exercises include multiple choice, sentence completion, completion of charts, graphs or diagrams, and short answers in one or two sentences.

Reading (Duration: 40-60 minutes)

It consists of 40 questions grouped in 3 sections. Each text is between one and two pages long and several questions are asked about it. The texts are actual excerpts from books, research articles, newspapers and scientific journals. The type of questions, as in the oral part, is highly varied: multiple answers, completing tables, graphs or diagrams, locating information in the text, indicating the writer's opinion, etc.

Writing (Duration: 40-50 minutes)

This part consists of two exercises, a 30-40 word essay and a 40-50 word essay. For the 30-40 word essay, a short report on a piece of information provided to the examinee in any format (text, graph, table or diagram) is usually requested.

Regarding the 40-50 word essay, a piece of information is usually presented very briefly (a couple of lines), followed by a statement about it, and then the candidate is asked to explain whether they agree or disagree with the statement, briefly stating the necessary arguments. The second exercise accounts for two-thirds of the "writing" grade and the first exercise for one-third.

Speaking (Duration: 10-15 minutes)

In this last part, a conversation is held with an examiner, and it is designed to be as realistic as possible. It is divided into 3 subsections. In the first, the candidate responds to personal, family and/or everyday questions. In the second, the candidate discusses a specific topic indicated by the examiner.

In this case, the ability to produce a coherent and orderly discourse is valued. In the third and last one, both the examiner and the candidate have a conversation on a specific topic, where oral interaction and discussion skills are assessed. The entire speaking part is recorded for later review purposes.

Sections						
Duration	Skills	Observations	Items	Tasks	Time	Instructions
A2 120-165 minutes	Oral expression and interaction	Monologue and directed questions. Oral examinations must be recorded		Minimum 2	10-15 minutes	Instructions in mother tongue
	Listening comprehension	Short audios which may be short dialogues or monologues related to topics of the level	Minimum of 5 items and maximum of 10 items per task. Minimum total of 15 items, recommended 20	Minimum 2, maximum 4. Dichotomous tasks are not accepted.	30-40 minutes	
	Written Expression	Various writing activities	Minimum 30 words, maximum 80 words	Minimum of 2 tasks	40-50 minutes	
	Reading Comprehension	Several reading comprehension activities with a minimum of 500 and a maximum of 800 words in total	Minimum of 5 items and maximum of 10 items per task. Minimum total of 15 items, recommended 20	Minimum 2, maximum 4. Dichotomous tasks are not accepted.	40-60 minutes	

04

Who Can Take the Exam?

Candidates for the Level A2 accreditation test may be members of the university community, as well as nationals or foreigners (over 16 years of age) who wish to accredit their level of linguistic competence for academic, educational, professional or personal purposes.

Although the interests and motivations of our students are different they all have a common goal: to improve and certify their level of Portuguese.





“

TECH provides you with access to your exam and helps you to pass it. Don't keep thinking about it and certify your level now!"

Why are our students interested in certifying their level?



Academic 25%

- ♦ Access to a university degree
- ♦ Access to doctoral studies
- ♦ Access to an official Master's Degree or postgraduate programs



Educational 13%

- ♦ Continuation of language studies
- ♦ Improve language skills



Personal 12%

- ♦ Improve CV
- ♦ Confirmation of skills



Professional 50%

- ♦ Access to a new position
- ♦ Promotion or job improvement





“

TECH supports you to take the exam online, providing you with everything you need so that you can focus on taking the test”

05

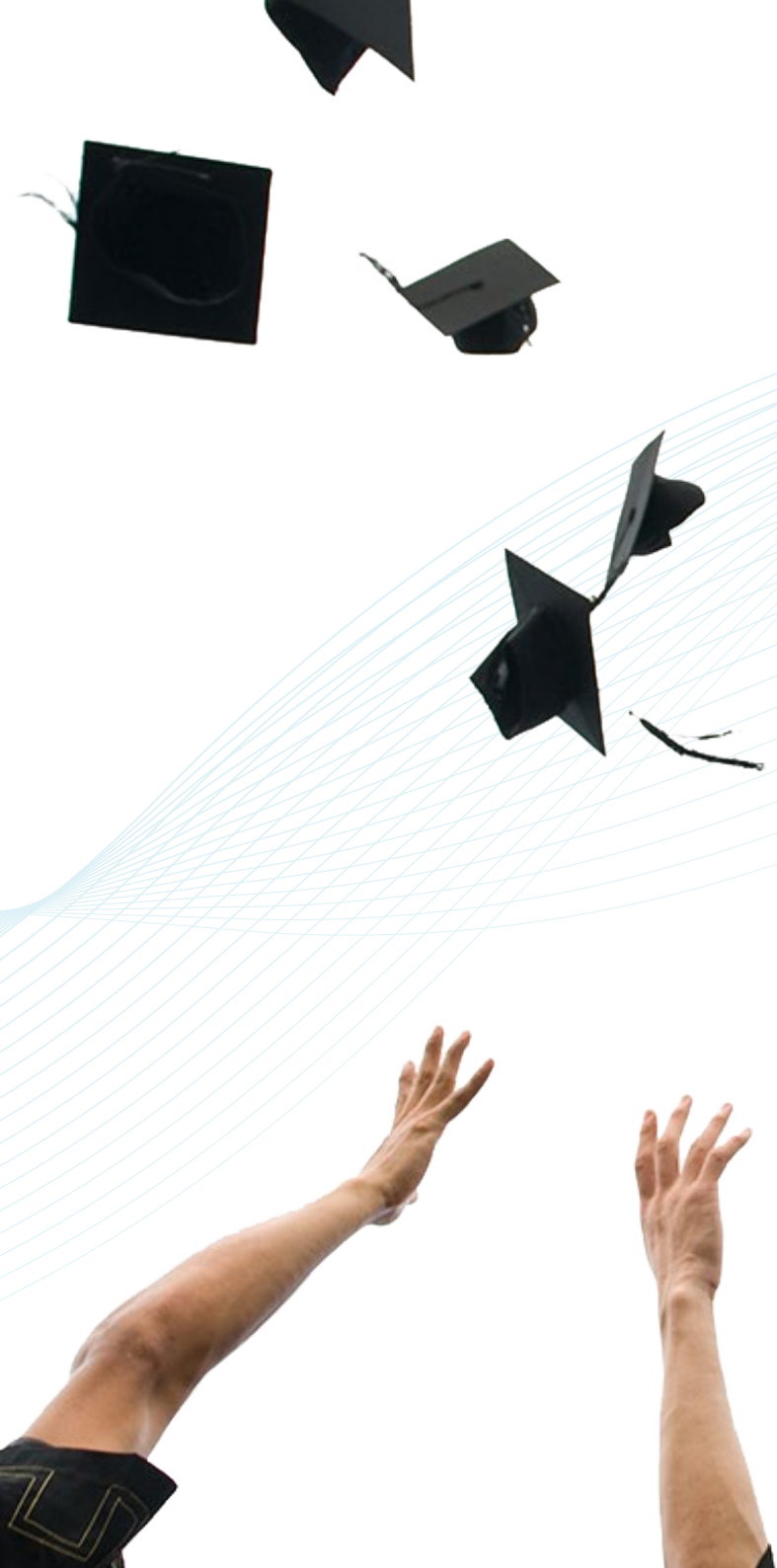
Assessment and Certification

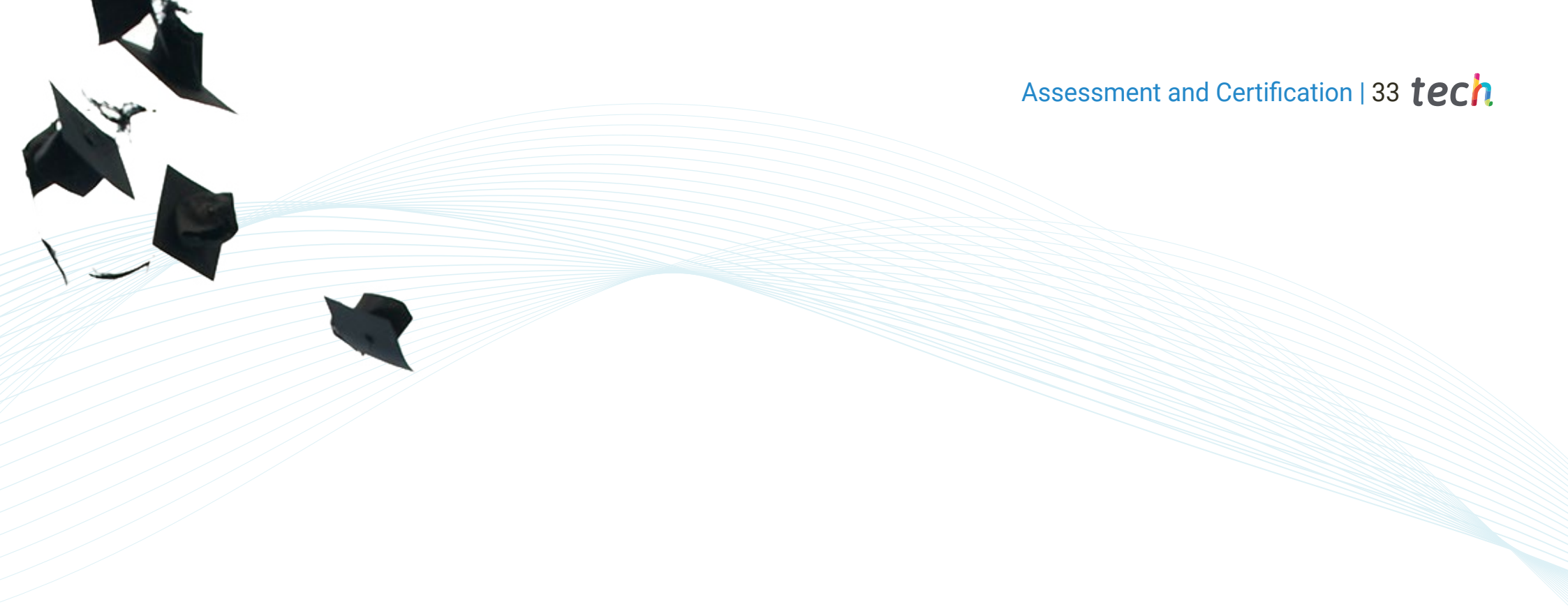
Each part of the exam accounts for 25% of the total grade. Candidates must obtain a minimum grade of 6 to pass each part of the exam.

- ♦ To obtain an overall PASS in the exam, it is necessary to pass all the tests and obtain an average of more than 6
- ♦ To obtain the overall grade of GOOD in the exam, you must pass all the tests with a grade higher than 6, and obtain an average between 7, 8 and 9
- ♦ To obtain the overall grade of EXCELLENT in the exam, you must pass all the tests with a grade higher than 6 and obtain an average between 9 and 10
- ♦ Only those who have passed may request a certificate of aptitude issued by TECH Technological University

The level will be considered as achieved if the final total score is greater than or equal to 60% of the total possible score. No average will be made if a minimum of 60% of the possible score is not reached in each of the evaluated skills.

Certificates will only be issued if the level has been reached.





“

To obtain the certificate, a score equal to or higher than 6 must be obtained in each of the 4 sections of the exam"



Take your exam online, with an expert tutor who will accompany you throughout the process. Come and certify your level!"

Certification

After successfully passing the exam, the student will receive a certificate of recognition that guarantees their preparation and proficiency at this level of the CEFR.

tech technological university

This official certificate hereby acknowledges that

Mr./Ms. _____
has passed the corresponding tests for

Language Certification Exam in A2 Portuguese

This is a CEFR qualification
obtained on ____/____/____

Tere Guevara Navarro
Tere Guevara Navarro
Dean

Unique TECH Code: AFWOR23S techtitute.com/certificates

tech technological university

Official Examination - CEFR A2 Portuguese
Results obtained

Skills	Score
Listening comprehension	3/5
Reading comprehension and use of language	4/5
Written production	3.5/5
Oral production and interaction	4.2/5
Final Score	14.7/20

Tere Guevara Navarro
Tere Guevara Navarro
Dean

Issued on _____
Issued in _____
Certificate date _____
Identification number _____

Unique TECH Code: AFWOR23S techtitute.com/certificates

*Apostille Convention. In the event that the student wishes to have their paper certificate issued with an apostille, TECH EDUCATION will make the necessary arrangements to obtain it, at an additional cost.

Instructions for the exam



Only candidates who have registered during the registration period and are on the official lists may sit the examination.



It is compulsory to present a valid identification document or passport at the exam. Nobody without identification will be allowed access to the examination.



The language accreditation tests may be adapted to candidates with special needs. For this purpose, the type of disability (motor, visual, hearing, etc.) and the degree of disability, duly justified with a medical report, must be reported at the time of registration. Applications will be accepted depending on how far in advance the center is informed and the availability of resources at the center.



tech technological
university



CEFR
A2 Portuguese
Exam

CEFR
A2 Portuguese
Exam