

CEFR

A1 Portuguese

Exam



“

We prepare you for a global society characterized by the unstoppable expansion of new markets, extraordinary cultural, social and linguistic diversity, innovation and technology as generators of opportunities, immediacy and proximity, collaboration and constant change. We prepare you to join this new reality, by helping you achieve linguistic mastery"

tech technological
university



CEFR
A1 Portuguese
Exam

Website: www.techtitute.com/school-of-languages/language-certification-exam/language-certification-exam-cefr-level-a1-portuguese

Index

01

Welcome

p. 4

02

Why Is it Important to Obtain
A1 Certificate?

p. 8

03

Methodology and Criteria for
Exam Evaluation

p. 12

04

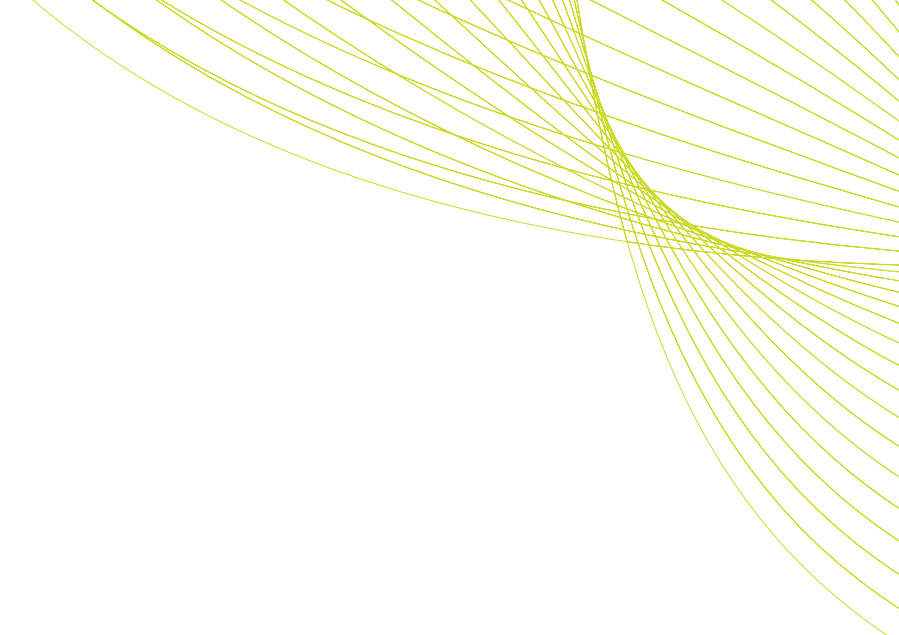
Who Can Take the Exam?

p. 24

05

Assessment and
Certification

p. 28



01 Welcome

Passing this exam awards the candidate with the A1 level of Portuguese according to the Common European Framework of Reference for Languages. Therefore, all those who wish to progress personally or professionally through the use of Brazilian Portuguese have a great opportunity with this exam offered by TECH, since it will allow them to obtain an accreditation of this level according to the CEFR. Whoever passes this test will be able to include an A1 qualification in this language in their credentials.





“Accredit your level of Portuguese following the CEFR and gain access to numerous professional and personal opportunities thanks to this”

Introduction

Language certification is essential nowadays, both for job applications and for other official processes that require level accreditation. Therefore, to be able to access scholarships and places at university, it is mandatory to have a certification like the one we offer you with this test.

This test will give access, therefore, to a certificate certifying the possession of Level A1 of Portuguese.

TECH carries out the A1 Portuguese exam with all the guarantees, according to the CEFR guidelines and on an individualized basis.





“

It is proven that learning languages increases your intelligence. Learning a foreign language strengthens the brain's neural networks”

José Antonio Marina.
Philosopher, writer, and teacher.



Flexible and Tailored

You will take the exam online and can organize the time of the exam with your personal examiner.



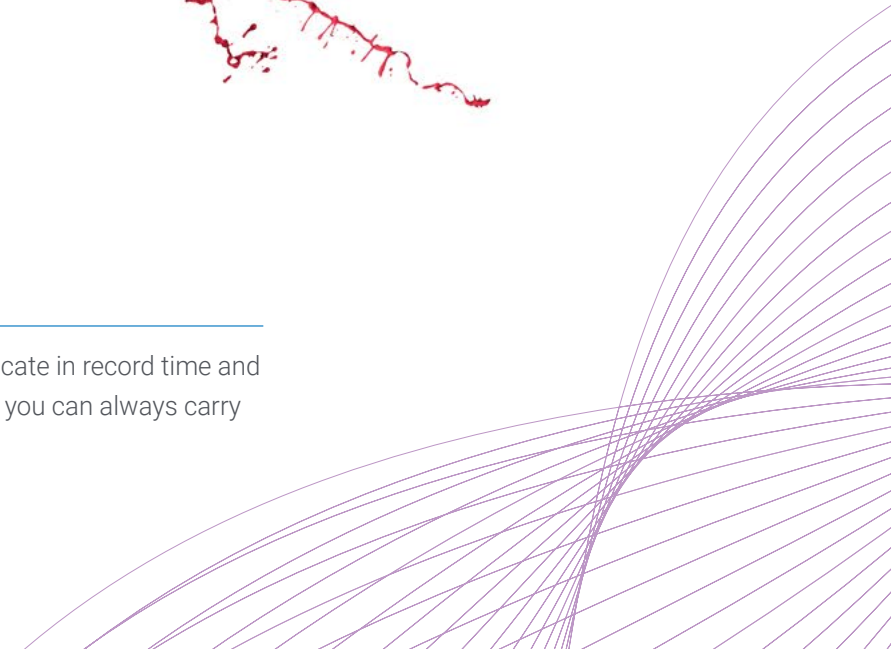
No Stress

Are you nervous about waiting in long lines to register for the exam and take the different tests? At TECH you can register online and take your test with a tutor just for you.



No Waiting

Receive your certificate in record time and in digital format so you can always carry it with you.



02

Why Is it Important to Obtain A1 Certificate?

This A1 Portuguese university certificate is the first essential step to demonstrate a basic command of the language. Thanks to the widespread recognition of the Common European Framework of Reference for Languages, those who have been able to pass this university test and have accredited A1 Portuguese will have a decisive advantage when it comes to accessing better jobs and employment opportunities.





“

Level A1 Portuguese is required in many professional and academic processes in Brazil. Don't miss this opportunity to certify your level of Portuguese and take this university exam”

tech 10 | Why Is it Important to Obtain A1 Certificate?

TECH Technological University

The Common European Framework of Reference for Languages is the only recognized and accredited system for assessing a student's level of proficiency. It is the most prestigious and widely accepted method of language accreditation in the world, allowing you to apply for all kinds of academic, personal or professional opportunities in any country in the world, both in the private and public sector. Thus, the CEFR is of great reference in terms of language certification, so passing this Level A1 Portuguese exam with TECH is the best decision a student can make.

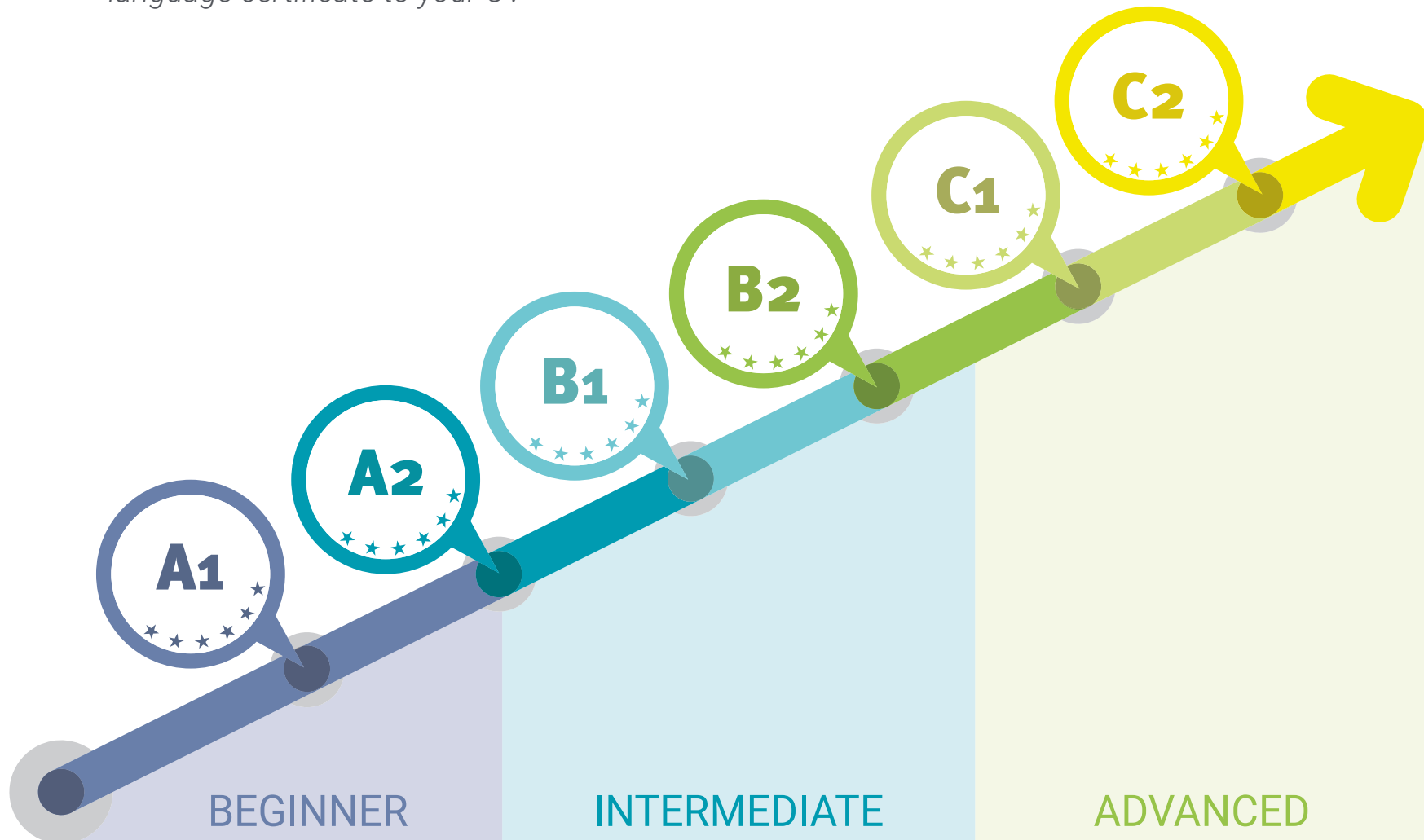
Accredit your level of Portuguese with a certificate based on the CEFR, the most important language recognition system in the world.

Other private language certification systems require students to periodically recertify their level of proficiency. TECH's CEFR certificate gives you a certificate for life.



“

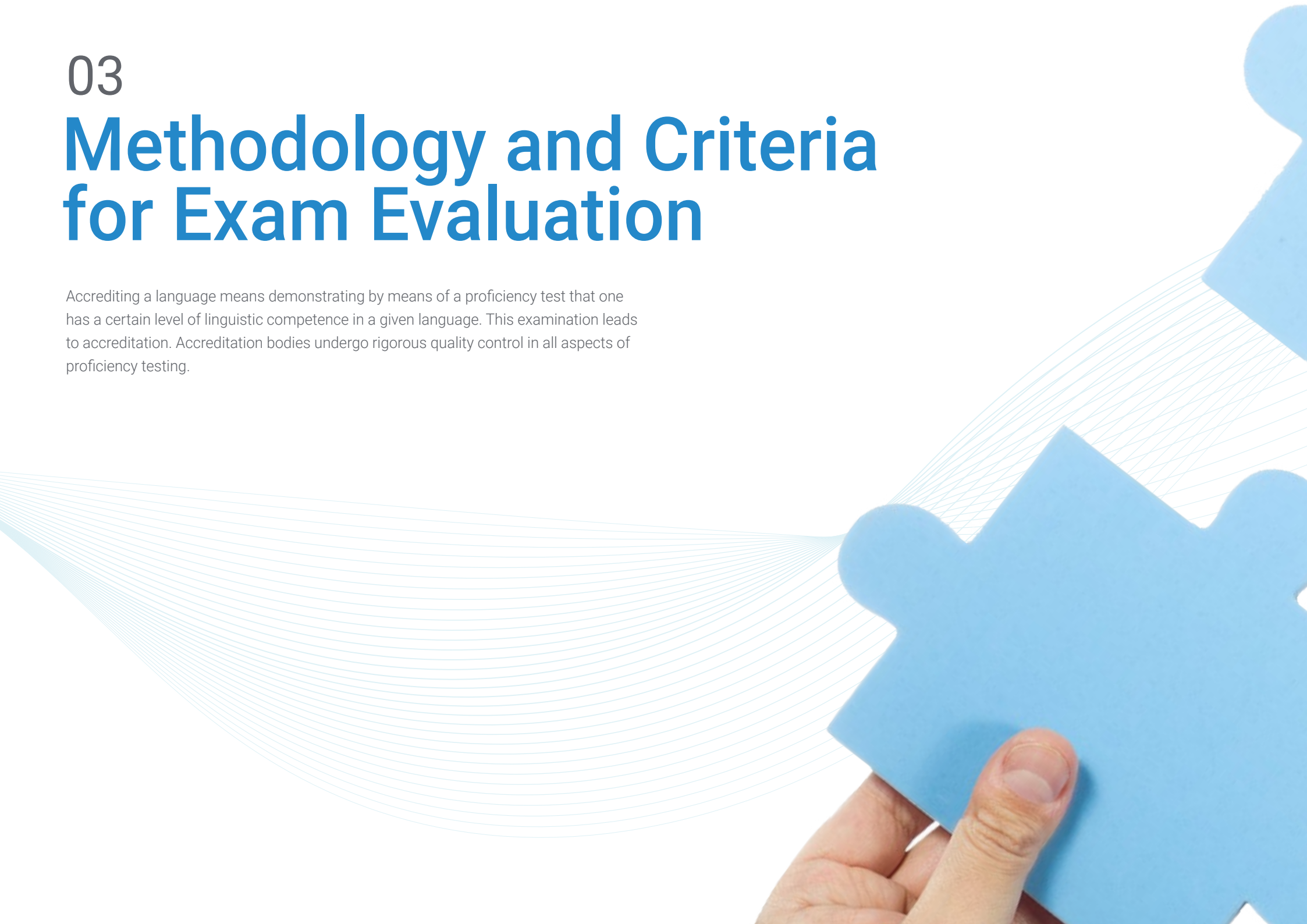
You will progress professionally in an immediate way when you add this language certificate to your CV”



03

Methodology and Criteria for Exam Evaluation

Accrediting a language means demonstrating by means of a proficiency test that one has a certain level of linguistic competence in a given language. This examination leads to accreditation. Accreditation bodies undergo rigorous quality control in all aspects of proficiency testing.





“

TECH complies with these standards and bases its examination methodology 100% on the recommendations of the CEFR”

What are the A1 Level Skills?

Level A1 (Access) is considered to be the lowest level of general language use, the point at which learners can interact in a simple way, can ask and answer questions about themselves, about where they live, about the people they know and the things they have, can make simple statements in areas of immediate need or on everyday topics and can respond to such questions when they are put to them, rather than simply relying on a very limited, rehearsed and lexically organized repertoire of phrases used in specific situations.

At this level, as defined by the Common European Framework of Reference for Languages, students progress in language skills to develop what are considered "Basic User" skills with the ability to:

“

Language school titles are not valid anywhere other than the country of origin. That is why you need a CEFR title with TECH: It's valid worldwide!”

01

Understand and use common everyday expressions and simple sentences to satisfy immediate needs



02

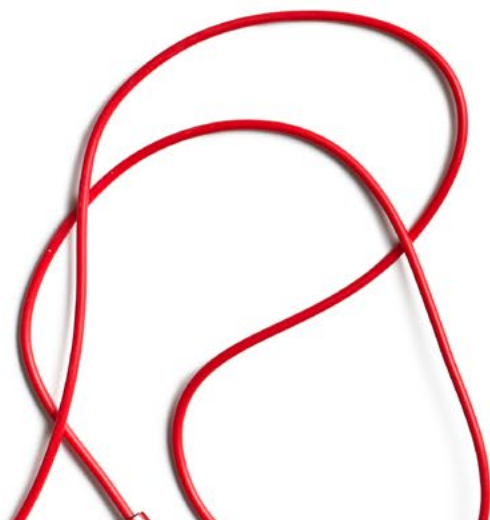
Interact in an elementary way as long as the interlocutor speaks slowly and clearly and is willing to cooperate

03

Introduce yourself and others, ask for and give basic personal information about your address, your belongings, and people you know

“

At TECH you can take your exam from home, with a personal tutor and with all the guarantees of a 100% CEFR certificate"



A1 level Self-Assessment Chart

What is a person with this level able to do?

Comprehension	Speaking	Writing
<p>Listening comprehension</p> <ul style="list-style-type: none">Recognize very basic, commonly-used words and expressions relating to themselves, their family and their immediate environment when spoken slowly and clearly <p>Reading Comprehension</p> <ul style="list-style-type: none">Understand familiar words and names and very simple phrases, e.g., those found on signs, posters, and catalogs	<p>Oral interaction</p> <ul style="list-style-type: none">Participate in a simple conversation, as long as the other person is willing to repeat what they have said or say it in other words and at a slower speed, and help them formulate what they are trying to sayAsk and answer simple questions on topics of immediate need or very common issues <p>Oral expression</p> <ul style="list-style-type: none">Use simple expressions and phrases to describe the place where they live and the people they know	<p>Written Expression</p> <ul style="list-style-type: none">Write short, simple postcards, e.g., to send greetingsFill in forms with personal data, e.g. name, nationality and address on a hotel registration form <p><i>Now is the moment, certify your level and finally add a qualification in Portuguese to your CV. At TECH we make it easy for you to get it.</i></p>

Qualitative aspects of spoken language usage for Level A1 (According to the Common European Framework of Reference for Languages)

What is expected to be achieved with this level?

Scope

- ◆ Possess a basic repertoire of simple words and phrases related to personal information and specific situations

Correction

- ◆ Show limited control of a few simple grammatical structures and sentence patterns within a memorized repertoire

Fluency

- ◆ Manage very brief, isolated and prepared expressions, using pauses to search for expressions, articulate less common words and correct communication

Interaction

- ◆ Ask and answer questions related to personal data
- ◆ Participate in a simple conversation, but communication is based entirely on repetition, rephrasing and correction of sentences

Coherence

- ◆ Link words or groups of words with very basic and linear connectors such as "and" and "then"



Objectives

01

Listening comprehension objectives

The candidate is able to:

- Understand speech that is very slow, carefully articulated and with enough pauses to assimilate the meaning
- Understand instructions that are explained slowly and carefully, and is able to follow directions if they are simple and short

02

Reading comprehension objectives

The candidate is able to:

- Understand very short and simple texts, reading sentence by sentence, picking up basic and common names, words and phrases, and rereading as needed
- Understand short and simple messages on postcards
- Recognize names, words and very basic phrases that appear on signs and in the most common situations
- Understand the meaning of simple informative written material and short and simple descriptions, especially if there is visual support
- Understand written directions if they are short and simple (e.g., how to get from one place to another)



03**Speaking objectives**

The candidate is able to:

- ♦ Engage in conversations in a straightforward manner, but communication is totally dependent on slower-paced repetitions, rephrasing and rectifications
- ♦ Ask and answer simple questions, make simple statements, and respond to statements made to them in areas of immediate need or on very everyday topics
- ♦ Understand common expressions aimed at satisfying simple, everyday needs as long as the interlocutor collaborates by addressing them in clear, slow speech and repeats what they do not understand
- ♦ Understand questions and instructions addressed to them clearly and slowly, understanding simple and brief directions
- ♦ Introduce oneself and use basic greetings and farewell expressions. Ask how people are doing and express their reactions to the news
- ♦ Understand everyday expressions aimed at satisfying simple concrete needs provided that the speaker collaborates by addressing them in clear, slow speech and repeats what they do not understand
- ♦ Understand questions and instructions if spoken slowly and carefully, and understand short, simple directions on how to get to a place. Be able to ask someone for something, and vice versa

- ♦ Ask someone for something, and vice versa. Good command of numbers, quantities, prices and schedules
- ♦ Make time indications by means of sentences such as, for example, "next week, last Friday, in November, at three o'clock"
- ♦ Responds in an interview to simple and direct questions about personal data, if spoken very slowly and clearly without idioms or set phrases

04**Writing objectives**

The candidate is able to:

- ♦ Ask for and provide information about personal details in writing
- ♦ Write short and simple postcards
- ♦ Write numbers and dates, their name, nationality, address, age, date of birth or date of arrival in a country, as is done, for example, in a hotel registration book

Features of the A1 Portuguese Exam

1 What does the TECH Technological University test assess?

- ♦ The contents of the exams and the evaluation criteria will be those corresponding to the CEFR descriptors
- ♦ No published assignments or test materials will be used
- ♦ The four skills (oral and written expression, oral and written comprehension) will be evaluated together or separately. Use of language tasks may also be included
- ♦ All test tasks, with the possible exception of the use of language tasks, will be close to real-world tasks and the text materials will be authentic, as far as possible and according to the level tested

2 How long does the test last?

- ♦ The exams, whatever the level, shall not be less than 100 minutes or more than 135 minutes



3 How is the test carried out?

- The oral and written comprehension tests, as well as the written expression test, are conducted via computer
- The speaking test consists of an interview, whenever possible, with two examiners and is recorded
- The written and oral expression tests, whenever possible, will be evaluated by two examiners according to the procedures established by TECH

Candidates must obtain at least a 6 on each part of the exam in order to obtain a PASS grade.

If you do not pass all areas, you will not get your certificate, but we will give you a detailed report of your skills in each area and competency.

4 What are the assessment criteria?

With regard to grades, TECH, following the recommendations, uses the following criteria:



Candidates who obtain at least 60% in each of the 4 parts of the exam will pass the exam. Based on the overall score, a grade will be awarded that will appear on the certificate issued by TECH, according to the following scale:



In the event that a candidate does not pass any of the 4 parts of the test, they must retake the entire exam.

Structure, duration and weighting of the 4 parts of the exam

The A1 exam is the most basic and, therefore, the shortest in duration. Below is a table with the sections, characteristics and duration of the different parts of the test.

Duration	Sections		Instructions
	Skill	Time	
A1 100-135 minutes	Speaking	Monologue and directed questions	10-15 minutes
	Listening comprehension	Short audios, which may be short dialogues or monologues related to topics of the level.	30-40 minutes
	Writing	Various written expression activities; may include use of language activities.	30-40 minutes
	Reading comprehension	Various reading comprehension activities	30-40 minutes



Knowing the nature of the test before you take it will facilitate optimal preparation”

Structure of the Level A1 Portuguese exam

It consists of 4 parts:

Listening, Speaking, Reading and Writing

The total duration of the exam is 90 to 135 minutes, with the first three parts taking place one after the other (1st Listening, 2nd Writing, 3rd. Reading). There will be a minimum of 20 minutes of rest between the first three parts and the 4th part (Speaking), which can be done on the same day, or on a different day, with a maximum limit of 7 days after the other block has been completed.

Listening (Duration 30-40 minutes)

The listening exam consists of 2-4 exercises, each of which is based on an audio recording that can be a monologue or a conversation between 2 or more people. Exercises include: multiple response, sentence completion, completion of charts, graphs or diagrams, and short answer in one or two sentences.

Example reading comprehension task

Identify the situation and/or main idea. Type of text: series of five short independent monologues or dialogues, for example: adverts, messages, short conversations, etc. Type of task: the students must choose the correct image from the three options provided to them.

Reading (Duration: 30-40 minutes)

It consists of 40 questions grouped in 3 sections. Each text is 100-150 words long and several questions are asked about it. The texts are basic and fictional, and have been specially designed for the test. The type of questions, as in the oral part, vary widely: multiple choice, completing tables, graphs or diagrams, or locating information in the text.

Example of reading comprehension

Find predictable factual information in texts such as signs, advertisements, schedules, menus with some visual support. Type of text: signs, advertisements, etc., on an everyday topic with visual support. Type of task: multiple choice based on short texts that focus on certain information. The correct answer must be chosen.

Writing (Duration: 30-40 minutes)

This part consists of two short essay exercises between 30-60 words. Usually a piece of information is presented very briefly (a couple of lines), followed by a statement about it, and then the candidate is asked to explain whether they agree or disagree with the statement, briefly stating the necessary arguments.

Speaking (Duration: 10-15 minutes)

In this last part, a conversation is held with an examiner, and it is designed to be as realistic as possible. It is divided into 2 subsections. In the first, the candidate responds to personal, family and/or everyday questions. In the second, the examiner and the candidate hold a basic conversation on a specific topic, where oral interaction and discussion skills are assessed. The entire part is recorded for later review purposes.

Sections						
Duration	Skills	Observations	Items	Tasks	Time	Instructions
A1 100-135 minutes	Oral expression and interaction	Monologue and directed questions. Oral examinations must be recorded.		Minimum 2	10-15 minutes per candidate	Instructions in mother tongue
	Listening comprehension	Short audios, which may be short dialogues or monologues related to topics of the level.	Minimum 5 words, maximum 10 words. Minimum total of 15, recommended 20.	Minimum 2, maximum 4. Dichotomous tasks are not accepted.	30-40 minutes	
	Written Expression	Various writing activities.	Minimum 30 words, maximum 80 words.	Minimum of 2 tasks	30-40 minutes	
	Reading Comprehension	Several reading comprehension activities with a minimum of 200 and a maximum of 500 words in total.	Minimum 5 words, maximum 10 words. Minimum total of 15, recommended 20.	Minimum 2, maximum 4. Dichotomous tasks are not accepted.	30-40 minutes	

04

Who Can Take the Exam?

Candidates for the Level A1 accreditation test may be members of the university community, as well as nationals or foreigners (over 16 years of age) who wish to accredit their level of linguistic competence for academic, educational, professional or personal purposes.

Although the interests and motivations of our students are different they all have a common goal: to improve and certify their level of Portuguese.





“

TECH provides you with access to your exam and helps you to pass it. Don't keep thinking about it and certify your level!"

Why are our students interested in certifying their level?



Academic 25%

- ♦ Access to a university degree
- ♦ Access to doctoral studies
- ♦ Access to an official Master's Degree or postgraduate training program



Educational 13%

- ♦ Continuation of language studies
- ♦ Improve language skills



Personal 12%

- ♦ Improve CV
- ♦ Confirmation of skills



Professional 50%

- ♦ Access to a new position
- ♦ Promotion or job improvement





“

If you prefer to take the exam online, we give you technical support and provide you with all the means you need so that you can avoid any stress and just focus on the test”

05

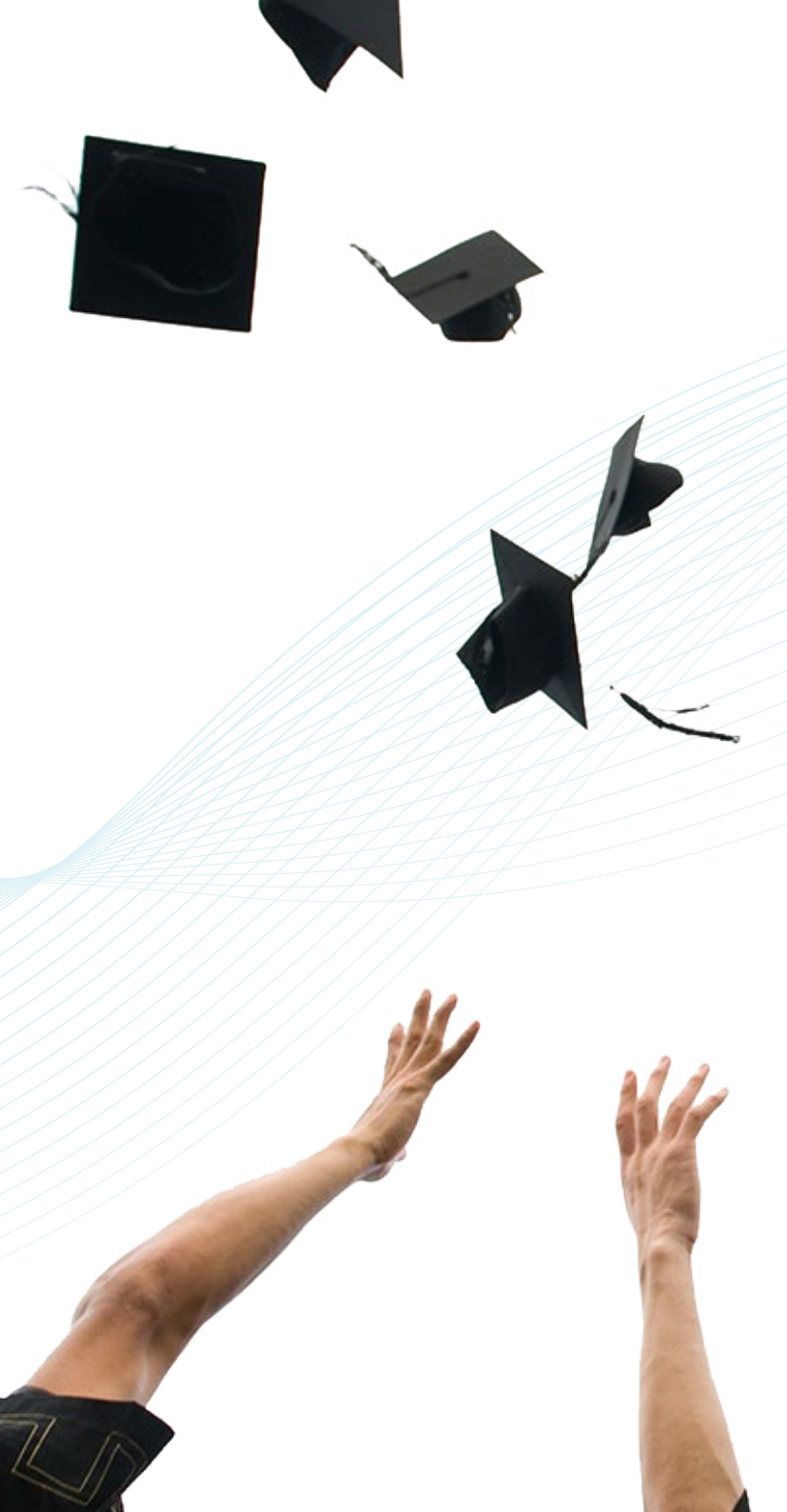
Assessment and Certification

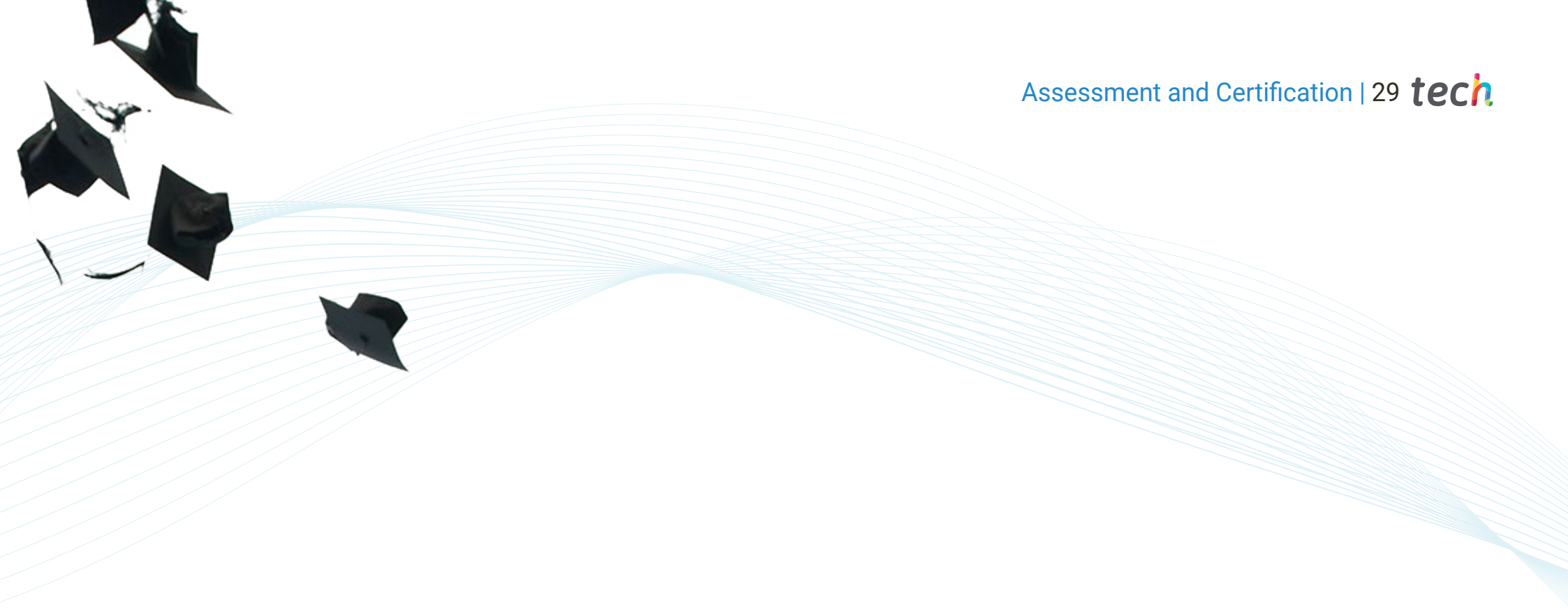
Each part of the exam accounts for 25% of the total grade. Candidates must obtain a minimum grade of 6 to pass each part of the exam.

- ♦ To obtain an overall PASS in the exam, it is necessary to pass all the tests and obtain an average of more than 6
- ♦ To obtain the overall grade of GOOD in the exam, you must pass all the tests with a grade higher than 6, and obtain an average between 7, 8 and 9
- ♦ To obtain the overall grade of EXCELLENT in the exam, you must pass all the tests with a grade higher than 6, and obtain an average between 9 and 10
- ♦ Only those who have obtained a PASS may request a certificate of aptitude issued by TECH Technological University

The level will be considered acquired if the final total score is greater than or equal to 60% of the total possible score. No average will be made if a minimum of 60% of the possible score is not reached in each of the evaluated skills

Certificates will only be issued if the level has been reached





“

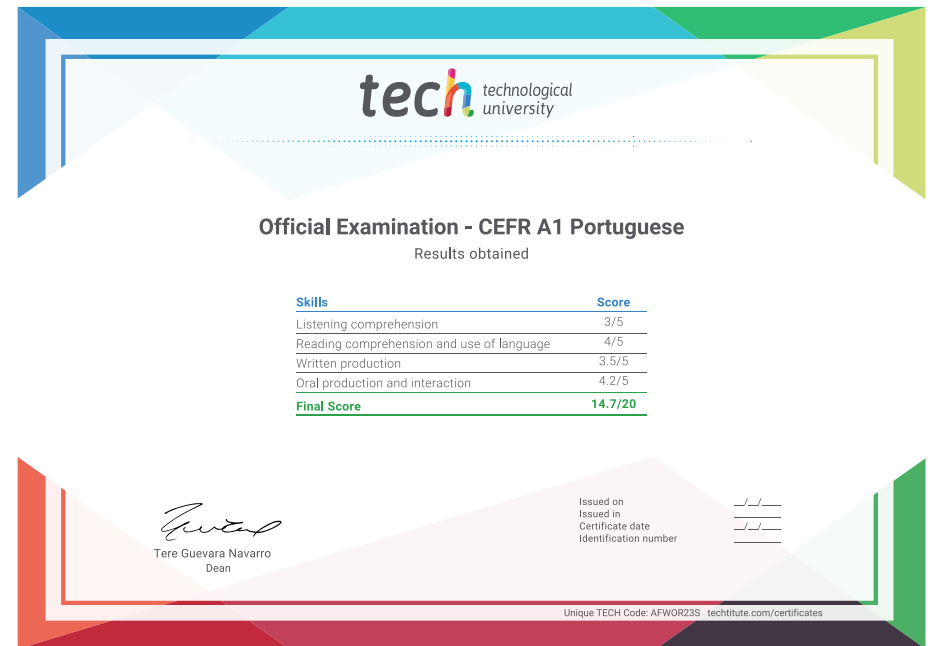
To obtain the certificate, a score equal to or higher than 6 must be obtained in each of the 4 sections of the exam”



An expert tutor will accompany you through the whole exam process to solve and doubts or worries you may have. Come and certify your level!"

Certification

After successfully passing the exam, the student will receive a diploma of recognition that guarantees their preparation and proficiency at this level of the CEFR.



*Apostille Convention. In the event that the student wishes to have their paper diploma issued with an apostille, TECH EDUCATION will make the necessary arrangements to obtain it, at an additional cost.

Instructions for the exam



Only candidates who have registered during the registration period and are on the official lists may sit for the examination.



It is compulsory to present a valid identification document or passport at the exam. No person without identification will be allowed access to the examination.



The language accreditation tests may be adapted to candidates with special needs. For this purpose, the type of disability (motor, visual, hearing, etc.) and the degree of disability, duly justified with a medical report, must be reported at the time of registration. Applications will be accepted depending on how far in advance the center is informed and the availability of resources at the center.



tech technological
university



CEFR
A1 Portuguese
Exam

CEFR
A1 Portuguese
Exam