

# Postgraduate Certificate Most Relevant Taxes





## Postgraduate Certificate Most Relevant Taxes

- » Modality: online
- » Duration: 6 weeks
- » Certificate: TECH Technological University
- » Dedication: 16h/week
- » Schedule: at your own pace
- » Exams: online
- » Target Group: Aimed at: graduates in Law, Economics or Business Administration and Management who wish to acquire a greater specialization in the Consultancy and Management of the administrative field.

Website: [www.techtute.com/us/school-of-business/postgraduate-certificate/most-relevant-taxes](http://www.techtute.com/us/school-of-business/postgraduate-certificate/most-relevant-taxes)

# Index

01

Welcome

---

*p. 4*

02

Why Study at TECH?

---

*p. 6*

03

Why Our Program?

---

*p. 10*

04

Objectives

---

*p. 14*

05

Structure and Content

---

*p. 18*

06

Methodology

---

*p. 24*

07

Our Students' Profiles

---

*p. 32*

08

Course Management

---

*p. 36*

09

Impact on Your Career

---

*p. 40*

10

Benefits for Your Company

---

*p. 44*

11

Certificate

---

*p. 48*

# 01 Welcome

The control of taxes is one of the most important and reiterative functions of the profession of the Administrative Manager. It is a set of tasks that reflect the client's commitment to the public system, which is why the administrative manager must conscientiously handle all the taxes, procedures and documents necessary in each case, in order to avoid problems that could result in an economic or patrimonial sanction. The keys to master this area and become a highly qualified manager to assume the leadership of any project related to taxes can be obtained by the graduate with the course of this program. Through its convenient 100% online format, you will acquire the broadest and most comprehensive knowledge of this sector, becoming a competent professional who will stand out in any selection process.



Postgraduate Certificate in Most Relevant Taxes  
TECH Technological University



“

*TECH presents this comprehensive program as a unique opportunity to become a distinguished professional specialized in the most relevant taxes of the tax system”*

02

# Why Study at TECH?

TECH is the world's largest 100% online business school. It is an elite business school, with a model based on the highest academic standards. A world-class center for intensive managerial skills education.



“

*TECH is a university at the forefront of technology, and puts all its resources at the student's disposal to help them achieve entrepreneurial success"*

## At TECH Technological University



### Innovation

The university offers an online learning model that balances the latest educational technology with the most rigorous teaching methods. A unique method with the highest international recognition that will provide students with the keys to develop in a rapidly-evolving world, where innovation must be every entrepreneur's focus.

"*Microsoft Europe Success Story*", for integrating the innovative, interactive multi-video system.



### The Highest Standards

Admissions criteria at TECH are not economic. Students don't need to make a large investment to study at this university. However, in order to obtain a qualification from TECH, the student's intelligence and ability will be tested to their limits. The institution's academic standards are exceptionally high...

**95%** | of TECH students successfully complete their studies



### Networking

Professionals from countries all over the world attend TECH, allowing students to establish a large network of contacts that may prove useful to them in the future.

**+100000**

executives prepared each year

**+200**

different nationalities



### Empowerment

Students will grow hand in hand with the best companies and highly regarded and influential professionals. TECH has developed strategic partnerships and a valuable network of contacts with major economic players in 7 continents.

**+500**

collaborative agreements with leading companies



### Talent

This program is a unique initiative to allow students to showcase their talent in the business world. An opportunity that will allow them to voice their concerns and share their business vision.

After completing this program, TECH helps students show the world their talent.



### Multicultural Context

While studying at TECH, students will enjoy a unique experience. Study in a multicultural context. In a program with a global vision, through which students can learn about the operating methods in different parts of the world, and gather the latest information that best adapts to their business idea.

TECH students represent more than 200 different nationalities.





TECH strives for excellence and, to this end, boasts a series of characteristics that make this university unique:



### Analysis

---

TECH explores the student's critical side, their ability to question things, their problem-solving skills, as well as their interpersonal skills.



### Academic Excellence

---

TECH offers students the best online learning methodology. The university combines the *Relearning* methodology (the most internationally recognized postgraduate learning methodology) with Harvard Business School case studies. A complex balance of traditional and state-of-the-art methods, within the most demanding academic framework.



### Economy of Scale

---

TECH is the world's largest online university. It currently boasts a portfolio of more than 10,000 university postgraduate programs. And in today's new economy, **volume + technology = a groundbreaking price**. This way, TECH ensures that studying is not as expensive for students as it would be at another university.



### Learn with the best

---

In the classroom, TECH's teaching staff discuss how they have achieved success in their companies, working in a real, lively, and dynamic context. Teachers who are fully committed to offering a quality specialization that will allow students to advance in their career and stand out in the business world.

Teachers representing 20 different nationalities.



*At TECH, you will have access to the most rigorous and up-to-date case analyses in academia"*

03

# Why Our Program?

Studying this TECH program means increasing the chances of achieving professional success in senior business management.

It is a challenge that demands effort and dedication, but it opens the door to a promising future. Students will learn from the best teaching staff and with the most flexible and innovative educational methodology.



“

*We have highly qualified teachers and the most complete syllabus on the market, which allows us to offer you education of the highest academic level”*

This program will provide you with a multitude of professional and personal advantages, among which we highlight the following:

**01**

### A Strong Boost to Your Career

By studying at TECH, students will be able to take control of their future and develop their full potential. By completing this program, students will acquire the skills required to make a positive change in their career in a short period of time.

*70% of students achieve positive career development in less than 2 years.*

**02**

### Develop a strategic and global vision of the company

TECH offers an in-depth overview of general management to understand how each decision affects each of the company's different functional fields.

*Our global vision of companies will improve your strategic vision.*

**03**

### Consolidate the student's senior management skills

Studying at TECH means opening the doors to a wide range of professional opportunities for students to position themselves as senior executives, with a broad vision of the international environment.

*You will work on more than 100 real senior management cases.*

**04**

### You will take on new responsibilities

The program will cover the latest trends, advances and strategies, so that students can carry out their professional work in a changing environment.

*45% of graduates are promoted internally.*

05

### Access to a powerful network of contacts

TECH connects its students to maximize opportunities. Students with the same concerns and desire to grow. Therefore, partnerships, customers or suppliers can be shared.

*You will find a network of contacts that will be instrumental for professional development.*

06

### Thoroughly develop business projects

Students will acquire a deep strategic vision that will help them develop their own project, taking into account the different fields in companies.

*20% of our students develop their own business idea.*

07

### Improve soft skills and management skills

TECH helps students apply and develop the knowledge they have acquired, while improving their interpersonal skills in order to become leaders who make a difference.

*Improve your communication and leadership skills and enhance your career.*

08

### You will be part of an exclusive community

Students will be part of a community of elite executives, large companies, renowned institutions, and qualified teachers from the most prestigious universities in the world: the TECH Technological University community.

*We give you the opportunity to study with a team of world-renowned teachers.*

# 04

# Objectives

The work of the Administrative Manager in terms of taxation must be characterized by speed and rigor, aspects that can only be obtained through specialized knowledge of the subject. That is why the objective of this program is to provide the graduate with all the academic tools that will allow them to know in detail the ins and outs of this sector, its procedures, specifications, etc. so that in this way they can offer a service at the height of their professional quality.



“

*If your goal is to move up or change company, you have before you the degree that will give you the keys to improve professionally and achieve it"*



TECH makes the goals of their students their own goals too.  
Working together to achieve them.

The **Postgraduate Certificate in Most Relevant Taxes** qualify the student to:

01

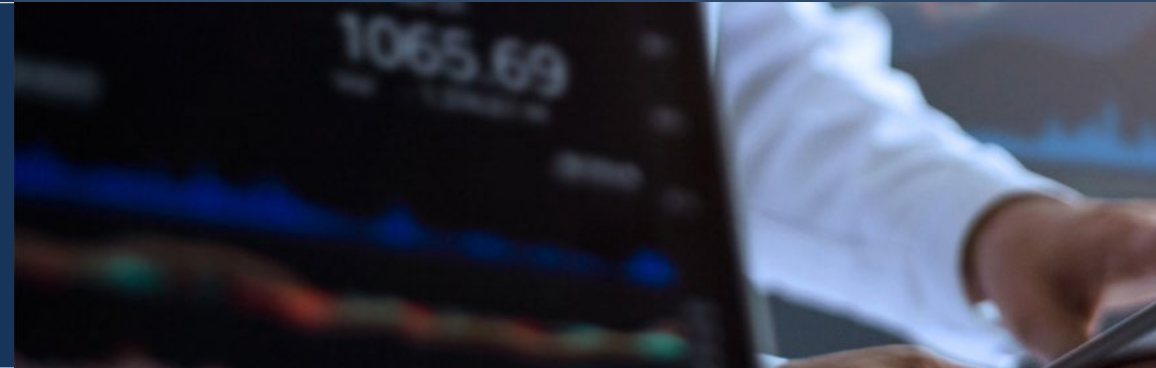
Identify the basis of the most common taxes

04

Understand the most complex procedures of  
Transfer Tax liquidation

02

Detailed knowledge of VAT settlement procedures in  
relatively complex cases



03

Master the Settling Personal Income Tax and  
Non-Resident Income Tax

05

Learn everything you need to know to pay local taxes



06

Make the declaration of assets abroad in the 720 form

08

Know in detail the most common local taxes

09

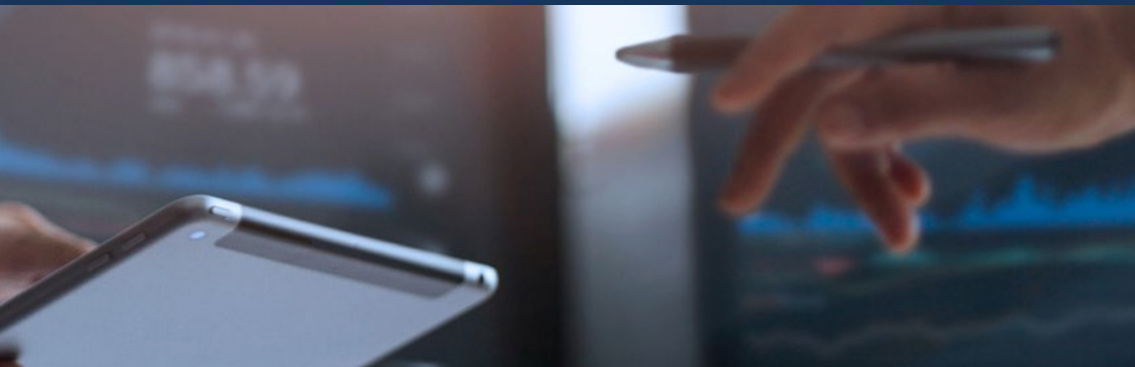
Know how to quickly and conscientiously identify the necessary documentation to be submitted in the processing of inheritance and gift tax

07

Carry out an effective income tax and special regimes calculation process

10

Develop a specialized knowledge of income tax for non-residents



05

# Structure and Content

This Postgraduate Certificate has been built based on a syllabus designed by the teaching team, exclusively for this program, based on the immediate reality of the taxation sector and developed based on the specifications of the Relearning methodology. The syllabus, together with all the additional material that the graduate will find in the Virtual Classroom, can be downloaded to any device with an internet connection, so that they can organize this academic experience from the beginning and based on their time and space availability.



“

*You decide when and from where you connect. This and other benefits characterize this convenient and versatile Postgraduate Certificate, but you can only discover them by enrolling”*

## Syllabus

The importance of having a specialized curriculum adapted to the specifics of the tax administration sector is what has led TECH to design this program in Most Relevant Taxes. It is a complete online program that will provide the graduate with the keys to face challenges and business decisions in complex environments.

Throughout the 150 hours of training in which this program is distributed, the student will be able to analyze a multitude of practical cases through individual and team work. It is, therefore, an authentic immersion in real business situations.

This 100% online program deals in depth with the tasks of the administrative manager related to the different specific procedures of the profession, and is designed to train professionals who understand the Law and Tax Administration from a strategic, international and innovative perspective.

A plan designed for professionals, focused on their professional improvement and that will prepare the graduate to achieve excellence in the business environment. A program that understands your needs and those of your organization through innovative content based on the latest trends, and supported by the best educational methodology and an exceptional faculty, which will provide you with the skills to solve critical situations in a creative and efficient way.

This Postgraduate Certificate is developed over 6 weeks and is divided into 1 module:

### Module 1

### The Most Relevant Taxes



### Where, When and How is it Taught?

TECH offers the possibility of developing this Postgraduate Certificate in Most Relevant Taxes completely online. During the 6 weeks of the specialization, the student will be able to access all the contents of this program at any time, which will allow the students to self-manage their study time.

*You will have the best syllabus based on the most relevant taxes to achieve your academic and professional goals.*

**Module 1. The Most Relevant Taxes**

**1.1. Value Added Taxes (VAT) I**

- 1.1.1. Scope of Application
- 1.1.2. Taxable Transaction and Non-liability Cases. Exemptions
- 1.1.3.1. Place of Realization of the Taxable Event. Passive Entity

**1.2. Value Added Tax (VAT) II. Accrual and deductions**

- 1.2.1. Accrual Taxable Income Tax Rates. Tax Debt
- 1.2.2. Deductions: Requirements
- 1.2.3. Deductions Regime in Differentiated Sectors

**1.3. Value Added Tax (VAT) III. Processing**

- 1.3.1. Pro Rata Rule. Deductions Prior to the Commencement of the Activity
- 1.3.2. Return
- 1.3.3. VAT Processing: Completion of Forms

**1.4. Income Tax**

- 1.4.1. Nature, Purpose and Scope of Application
- 1.4.2. Subjection to the Tax: Material, Personal and Temporary Aspects
- 1.4.3. Determination of the Economic Capacity Subject to Taxation: Income and Capital Gains and Losses
- 1.4.4. Types of Income. Integration and Compensation of Income in the General Taxable Base and in the Savings Taxable Base. General and Savings Taxable Base

**1.5. Income Tax: Calculation of the Tax and Special Regimes**

- 1.5.1. Reduction Adjustment of the tax to personal and family circumstances
- 1.5.2. Calculation of the state tax. Autonomous community tax. Differential quota. Family taxation
- 1.5.3. Special Regimes. Tax Returns, Payments on Account and Formal Obligations
- 1.5.4. Special Regimes. Tax Returns, Payments on Account and Formal Obligations
- 1.5.5. Mention of Form 720

**1.6. Income Taxation of Non-residents**

- 1.6.1. Scope of Application Personal Elements. Subject to tax. Tax Liability
- 1.6.2. Income Obtained through Permanent Establishment and without Permanent Establishment
- 1.6.3. Income Obtained through Permanent Establishment and without Permanent Establishment
- 1.6.4. Processing of the Non-resident Income Tax Return: Completion of Tax Forms
- 1.6.5. Special Regime for Displaced Persons

**1.7. Inheritance and Gift Taxes I**

- 1.7.1. Taxable Transaction
- 1.7.2. Passive Entity
- 1.7.3. Taxable Income
- 1.7.4. Tax Liability

**1.8. Inheritance and Gift Tax II: Processing**

- 1.8.1. Differences between Its Application in the Different Autonomous Communities
- 1.8.2. ISD Processing: Common Practical Cases
- 1.8.3. ISD Processing: Completion of Forms

**1.9. Tax on Patrimonial Transfers and Documented Legal Acts**

- 1.9.1. Taxable Event, Taxable Person, Taxable Base, Tax Liability and Special Rules
- 1.9.2. Processing Fundamental Aspects in its Processing

**1.10. Most Common Local Taxes**

- 1.10.1. Tax on the Increase in Value of Urban Land
- 1.10.2. Real Estate Tax
- 1.10.3. Tax on Mechanical Traction Vehicles
- 1.10.4. Excise Duties
- 1.10.5. Other Taxes





10.100 A +1.647 A +2.54%	16.700 Y -0.235 Y -1.15%	56.600 Y -1.457 Y -2.31%
10.400 A +1.800 A +2.00%	17.200 Y -0.155 Y -0.77%	35.167 A +2.154 A +2.45%
10.800 A +2.105 A +2.14%	23.744 A +1.778 A +2.64%	14.644 Y -1.437 Y -1.00%
11.200 A +0.854 A +0.65%	11.304 Y +2.654 Y +2.35%	41.350 A +0.650 A +0.24%
11.602 A +2.351 A +1.54%	16.189 Y -0.124 Y -1.36%	16.542 Y -2.433 Y -1.45%
12.000 Y +0.200 Y +0.00%	12.201 Y -0.851 Y -1.02%	10.237 Y -0.579 Y -2.80%
12.400 Y +0.400 A +0.40%	16.154 Y -1.137 Y -1.89%	24.155 A +1.455 A +1.45%
12.800 Y +0.200 Y +0.00%	11.800 Y -1.154 Y -1.15%	11.046 Y -0.635 Y -1.46%
13.200 A +2.600 A +2.54%	15.260 A +0.345 A +1.26%	30.800 Y -1.350 Y -1.02%
13.600 A +0.200 A +0.00%	11.000 Y -0.135 Y -0.44%	65.337 A +0.250 A +2.45%
14.000 A +0.100 A +0.05%	14.437 Y -0.174 Y -1.05%	21.537 Y -1.344 Y -1.80%



# 06

# Methodology

This academic program offers students a different way of learning. Our methodology uses a cyclical learning approach: **Relearning**.

This teaching system is used, for example, in the most prestigious medical schools in the world, and major publications such as the **New England Journal of Medicine** have considered it to be one of the most effective.







“

*Discover Relearning, a system that abandons conventional linear learning, to take you through cyclical teaching systems: a way of learning that has proven to be extremely effective, especially in subjects that require memorization"*

## TECH Business School uses the Case Study to contextualize all content

Our program offers a revolutionary approach to developing skills and knowledge. Our goal is to strengthen skills in a changing, competitive, and highly demanding environment.

“*At TECH, you will experience a learning methodology that is shaking the foundations of traditional universities around the world*”



*This program prepares you to face business challenges in uncertain environments and achieve business success.*





*Our program prepares you to face new challenges in uncertain environments and achieve success in your career.*

### A learning method that is different and innovative

This TECH program is an intensive educational program, created from scratch to present executives with challenges and business decisions at the highest level, whether at the national or international level. This methodology promotes personal and professional growth, representing a significant step towards success. The case method, a technique that lays the foundation for this content, ensures that the most current economic, social and business reality is taken into account.

**“** *You will learn, through collaborative activities and real cases, how to solve complex situations in real business environments”*

The case method has been the most widely used learning system among the world's leading business schools for as long as they have existed. The case method was developed in 1912 so that law students would not only learn the law based on theoretical content. It consisted of presenting students with real-life, complex situations for them to make informed decisions and value judgments on how to resolve them. In 1924, Harvard adopted it as a standard teaching method.

What should a professional do in a given situation? This is the question we face in the case method, an action-oriented learning method. Throughout the program, the studies will be presented with multiple real cases. They must integrate all their knowledge, research, argue and defend their ideas and decisions.

## Relearning Methodology

TECH effectively combines the Case Study methodology with a 100% online learning system based on repetition, which combines different teaching elements in each lesson.

We enhance the Case Study with the best 100% online teaching method: Relearning.

*Our online system will allow you to organize your time and learning pace, adapting it to your schedule. You will be able to access the contents from any device with an internet connection.*

At TECH you will learn using a cutting-edge methodology designed to train the executives of the future. This method, at the forefront of international teaching, is called Relearning.

Our online business school is the only one in the world licensed to incorporate this successful method. In 2019, we managed to improve our students' overall satisfaction levels (teaching quality, quality of materials, course structure, objectives...) based on the best online university indicators.



In our program, learning is not a linear process, but rather a spiral (learn, unlearn, forget, and re-learn). Therefore, we combine each of these elements concentrically.

With this methodology we have trained more than 650,000 university graduates with unprecedented success in fields as diverse as biochemistry, genetics, surgery, international law, management skills, sports science, philosophy, law, engineering, journalism, history, markets, and financial instruments. All this in a highly demanding environment, where the students have a strong socio-economic profile and an average age of 43.5 years.

*Relearning will allow you to learn with less effort and better performance, involving you more in your specialization, developing a critical mindset, defending arguments, and contrasting opinions: a direct equation to success.*

From the latest scientific evidence in the field of neuroscience, not only do we know how to organize information, ideas, images and memories, but we know that the place and context where we have learned something is fundamental for us to be able to remember it and store it in the hippocampus, to retain it in our long-term memory.

In this way, and in what is called neurocognitive context-dependent e-learning, the different elements in our program are connected to the context where the individual carries out their professional activity.



This program offers the best educational material, prepared with professionals in mind:



### Study Material

All teaching material is produced by the specialists who teach the course, specifically for the course, so that the teaching content is highly specific and precise.

These contents are then applied to the audiovisual format, to create the TECH online working method. All this, with the latest techniques that offer high quality pieces in each and every one of the materials that are made available to the student.



### Classes

There is scientific evidence suggesting that observing third-party experts can be useful.

Learning from an Expert strengthens knowledge and memory, and generates confidence in future difficult decisions.



### Management Skills Exercises

They will carry out activities to develop specific executive competencies in each thematic area. Practices and dynamics to acquire and develop the skills and abilities that a high-level manager needs to develop in the context of the globalization we live in.



### Additional Reading

Recent articles, consensus documents and international guidelines, among others. In TECH's virtual library, students will have access to everything they need to complete their course.







### Case Studies

Students will complete a selection of the best case studies chosen specifically for this program. Cases that are presented, analyzed, and supervised by the best senior management specialists in the world.



### Interactive Summaries

The TECH team presents the contents attractively and dynamically in multimedia lessons that include audio, videos, images, diagrams, and concept maps in order to reinforce knowledge.

This exclusive educational system for presenting multimedia content was awarded by Microsoft as a "European Success Story".



### Testing & Retesting

We periodically evaluate and re-evaluate students' knowledge throughout the program, through assessment and self-assessment activities and exercises, so that they can see how they are achieving their goals.



07

# Our Students' Profiles

Given the nature of this program, most of the classmates that graduates will meet when they enter it come from the fields of Administration, Law and Economics. This is a group of professionals who wish to promote their business project through the completion of a program that will provide them with the best knowledge to achieve it. It is, therefore, a meeting place for future partners and clients with common objectives and expectations.







“

*Going deeper into income tax will allow you to acquire a broad and exhaustive knowledge and exhaustive knowledge about the most important issues of this management"*

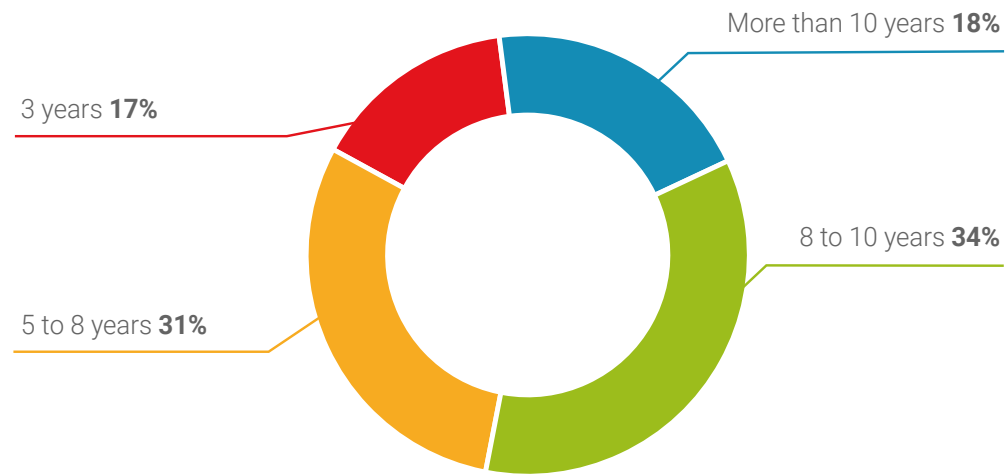
### Average Age

---

Between **35** and **45** years old

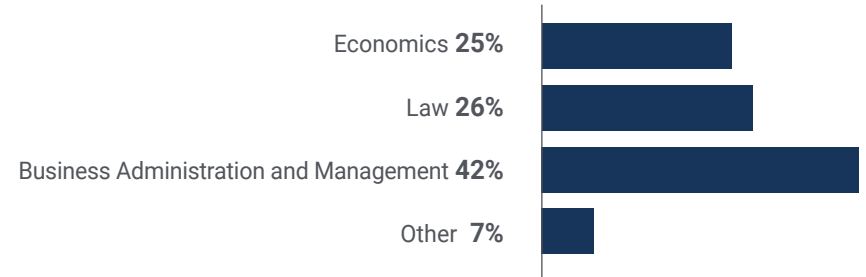
### Years of Experience

---



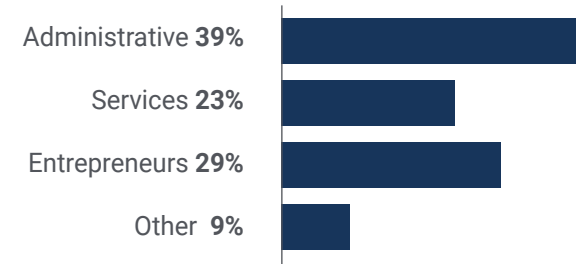
### Training

---



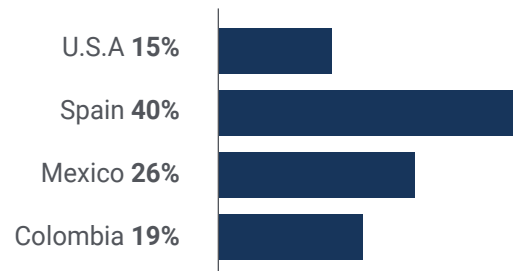
### Educational Profile

---



## Geographical Distribution

---



## Airam Beltrán

---

Senior Administrative Manager of an accounting firm

*"If you are looking for a program that will make you stand out, you are in the right place. Thanks to the completeness I found in the syllabus of this Postgraduate Certificate, I was able to greatly improve my professional skills to the point of not recognizing myself. I never thought that an online program would be so beneficial to my career and TECH showed me that, with a little effort, and with the support of a good university, you can go as far as you want to go"*

08

# Course Management

The teaching staff of this Postgraduate Certificate is made up of a group of professionals from the Administration and the Law who have in their curriculum a broad and specialized career in the management and ion of successful projects. They are active experts who will bring to the program a realistic, innovative, current and critical character, aspects that will influence a more dynamic syllabus adapted to the current circumstances of the profession.

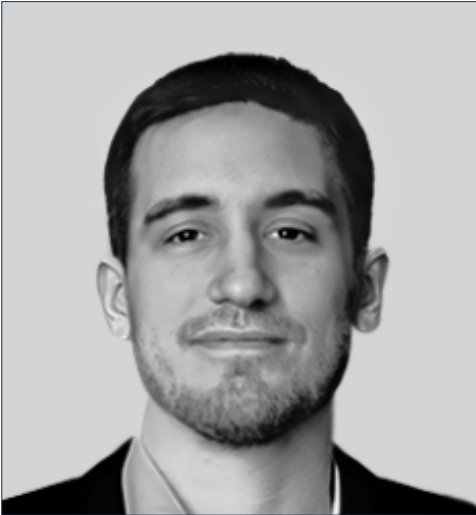




“

*You will be able to grow professionally with experts in tax law and learn from their strategies and mistakes"*

## Management



### **Mr. de la Rosa Fernández, Miguel Ángel**

- ♦ Expert Lawyer in Public Administration and Tax Law
- ♦ Partner and administrator of Intext Asociados
- ♦ Partner and administrator of R. Estate Advisers Madrid
- ♦ Lawyer of mortgage management at Exequator SL
- ♦ Master in Tax Law at the Centro de Estudios Financieros
- ♦ Master's Degree in Legal practice, Complutense University of Madrid
- ♦ Graduate in Legal Science of Public Administration
- ♦ Law Degree from the Complutense University of Madrid

## Professors

### Mr. Santiago Saéz, Ángel

- Head of the Cultural, Training and Sports Activities Unit of the Madrid City Council
- Assistant to the Department of Associative Management in the Directorate General of Citizen Participation of the Madrid City Council
- Head of the Cultural, Training and Sports Activities Unit of the Hortaleza Municipal Council
- Responsible for Local Area Networks in the Social Security Administration
- Responsible for the IT area of the special audit team of the General Treasury of the Social Security
- Law Degree from the Complutense University of Madrid
- Specialization in Tax Law and Tax Consultancy at the ESINE Business Studies Center
- Dbase III, Dbase IV and general computer programming courses at FYCSA Formación y Consultoría



*A unique, key, and decisive experience to boost your professional development”*



09

# Impact on Your Career

Including this program in the graduate's résumé can be a great opportunity for them to be able to opt for the job promotion they have been longing for and for which, after completing it, they will be perfectly qualified. It is about giving a qualitative leap to his professional career that will open the doors to a more prosperous working future characterized by prestigious projects. Through unique and specialized knowledge, you will be able to achieve your most ambitious goals in less time than you think.







“

*You will be able to network with colleagues from all over the world, people who share your goals and who could become future clients and partners”*

### Are you ready to take the leap? Excellent professional development awaits you.

TECH's Postgraduate Certificate in Most Relevant Taxes is an intensive program that prepares you to face challenges and business decisions in the field of Administration. The main objective is to promote your personal and professional growth. Helping you achieve success.

If you want to improve yourself, make a positive change at a professional level and interact with the best, this is the place for you"

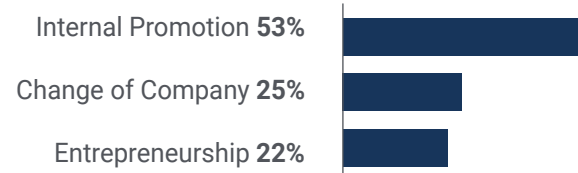
*If you are looking for a program that will help you qualify for a significant salary increase, you have the opportunity to achieve it.*

*By choosing this program you will be betting on quality training, endorsed by world's largest online university.*

#### Time of Change



#### Type of change



## Salary increase

---

The completion of this program represents a salary increase of more than **25,22%** for our students.



10

# Benefits for Your Company

The benefits that this program can bring to the company of which the graduate forms part are mainly two: they will have the most specialized and exhaustive knowledge of taxation and will positively influence the correct administrative management of the entity. In addition, this program is designed to motivate you to develop your managerial skills, so you will become a highly qualified leader to face complex situations with total guarantee of success.





“

*This Postgraduate Certificate will increase your company's talent, increasing its productivity and the benefits you will receive”*

Developing and retaining talent in companies is the best long-term investment.

01

### **Growth of talent and intellectual capital**

The professional will introduce the company to new concepts, strategies, and perspectives that can bring about significant changes in the organization.

---

02

### **Retaining high-potential executives to avoid talent drain**

This program strengthens the link between the company and the professional and opens new avenues for professional growth within the company.

03

### **Building agents of change**

You will be able to make decisions in times of uncertainty and crisis, helping the organization overcome obstacles.

---

04

### **Increased international expansion possibilities**

Thanks to this program, the company will come into contact with the main markets in the world economy.





05

### **Project Development**

The professional can work on a real project or develop new projects in the field of R & D or business development of your company.

---

06

### **Increased competitiveness**

This program will equip students with the skills to take on new challenges and drive the organization forward.

# 11

# Certificate

The Postgraduate Certificate in Most Relevant Taxes guarantees, in addition to the most rigorous and up-to-date education, access to a Postgraduate Certificate diploma issued by TECH Technological University.



“

*Successfully complete this program  
and receive your university qualification  
without having to travel or fill out  
laborious paperwork”*

This **Postgraduate Certificate in Most Relevant Taxes** contains the most complete and up-to-date program on the market.

After the student has passed the assessments, they will receive their corresponding **Postgraduate Certificate** issued by **TECH Technological University** via tracked delivery\*.

The diploma issued by **TECH Technological University** will reflect the qualification obtained in the Postgraduate Certificate, and meets the requirements commonly demanded by labor exchanges, competitive examinations and professional career evaluation committees.

Title: **Postgraduate Certificate in Most Relevant Taxes**

Official N° of Hours: **150 h.**



\*Apostille Convention. In the event that the student wishes to have their paper diploma issued with an apostille, TECH EDUCATION will make the necessary arrangements to obtain it, at an additional cost.



## Postgraduate Certificate Most Relevant Taxes

- » Modality: online
- » Duration: 6 weeks
- » Certificate: TECH Technological University
- » Dedication: 16h/week
- » Schedule: at your own pace
- » Exams: online

# Postgraduate Certificate Most Relevant Taxes