

Professional Master's Degree Psychotic Disorders



Professional Master's Degree Psychotic Disorders

- » Modality: online
- » Duration: 12 months
- » Certificate: TECH Technological University
- » Dedication: 16h/week
- » Schedule: at your own pace
- » Exams: online

Website: www.techtute.com/us/psychology/professional-master-degree/master-psychotic-disorders

Index

01

Introduction

p. 4

02

Objectives

p. 8

03

Skills

p. 14

04

Course Management

p. 18

05

Structure and Content

p. 22

06

Methodology

p. 28

07

Certificate

p. 36

01

Introduction

Schizophrenia continues to generate fear and misunderstanding in society, although it has undergone great advances thanks to various scientific studies. The same happens with other mental problems, where progress has been made in diagnostic techniques and in new approaches to intervention in the rehabilitation of those who suffer from it, as well as in the approach to this situation with the family environment. This provides an unbeatable framework for the specialist who wishes to update their psychological vademecum. This program offers the psychology professional an opportunity to update their knowledge in this area in a 100% online way, with the ease of being able to access all the content from the first day, without fixed schedules or attendance.





“

Address new approaches to the rehabilitation of patients with Psychotic Disorders with this fully online program, where you decide how to distribute your course load”

Mental health problems have increased in recent years due to various factors; among them, economic-social issues or the consumption of narcotic substances. However, there is still a biological component that determines that some people suffer from some psychotic disorders.

This program, taught 100% online, provides the psychology professional with a broad knowledge in the approach to Psychotic Disorders, the most current treatments applied in different hospitals and clinics around the world, the latest scientific research, the social and health policies that are being developed at the moment and the current legal framework.

This program, which consists of 1,500 teaching hours, will allow the psychology professional to obtain a deep knowledge about the current positioning of psychotic entities at the biological level, family approach strategies in schizophrenia and suicide in psychotic disorders. A program with a theoretical-practical approach, where students will have a teaching team with extensive experience in the health field, especially in the field of psychology and also in teaching.

A Professional Master's Degree that provides the opportunity to learn about the latest advances easily and comfortably, since the psychologist can access the multimedia content, additional readings and case studies at any time of the day. They only need a device with an Internet connection to connect to the virtual platform and distribute the teaching load according to their interests. An ideal option for those who wish to balance their personal responsibilities with the renewal of knowledge.

This **Professional Master's Degree in Psychotic Disorders** contains the most complete and up-to-date program on the market. The most important features include:

- ♦ The development of practical cases presented by experts in Psychology and Psychotic Disorders
- ♦ The graphic, schematic, and practical contents with which they are created, provide scientific and practical information on the disciplines that are essential for professional practice
- ♦ Practical exercises where self-assessment can be used to improve learning
- ♦ Emphasis on innovative methodologies
- ♦ Theoretical lessons, questions to the expert, debate forums on controversial topics, and individual reflection assignments
- ♦ Content that is accessible from any fixed or portable device with an Internet connection



Advance in the latest developments in the biopsychosocial influence of Psychotic Disorders with this Professional Master's Degree"

“

Delve into the legal aspects concerning psychotic entities in this program, the gender perspective in Psychotic Disorders and the current approach in the field of mental health”

This Professional Master's Degree brings you closer to the new conceptualization of psychiatry, with ideological proposals and voices of the highest category.

Download the entire syllabus from day one and view it whenever you wish. TECH adapts to you.

The program's teaching staff includes professionals from the sector who contribute their work experience to this educational program, as well as renowned specialists from leading societies and prestigious universities.

Its multimedia content, developed with the latest educational technology, will provide the professional with situated and contextual learning, i.e., a simulated environment that will provide an immersive education programmed to learn in real situations.

The design of this program focuses on Problem-Based Learning, by means of which the professional must try to solve the different professional practice situations that are presented throughout the academic course. For this purpose, the student will be assisted by an innovative interactive video system created by renowned experts.



02

Objectives

During the 1,500 hours that make up this program in Psychotic Disorders, the health professional will achieve a broader knowledge in this area by knowing the most relevant aspects that influence and mark the current state of Psychotic Disorders, the new approaches to intervention in rehabilitation of schizophrenia and Psychotic Disorders and the latest lines of scientific research in this field. The Relearning system, based on the reiteration of content and used by TECH in our programs, will be very useful for the professional to consolidate all the content of the teaching.





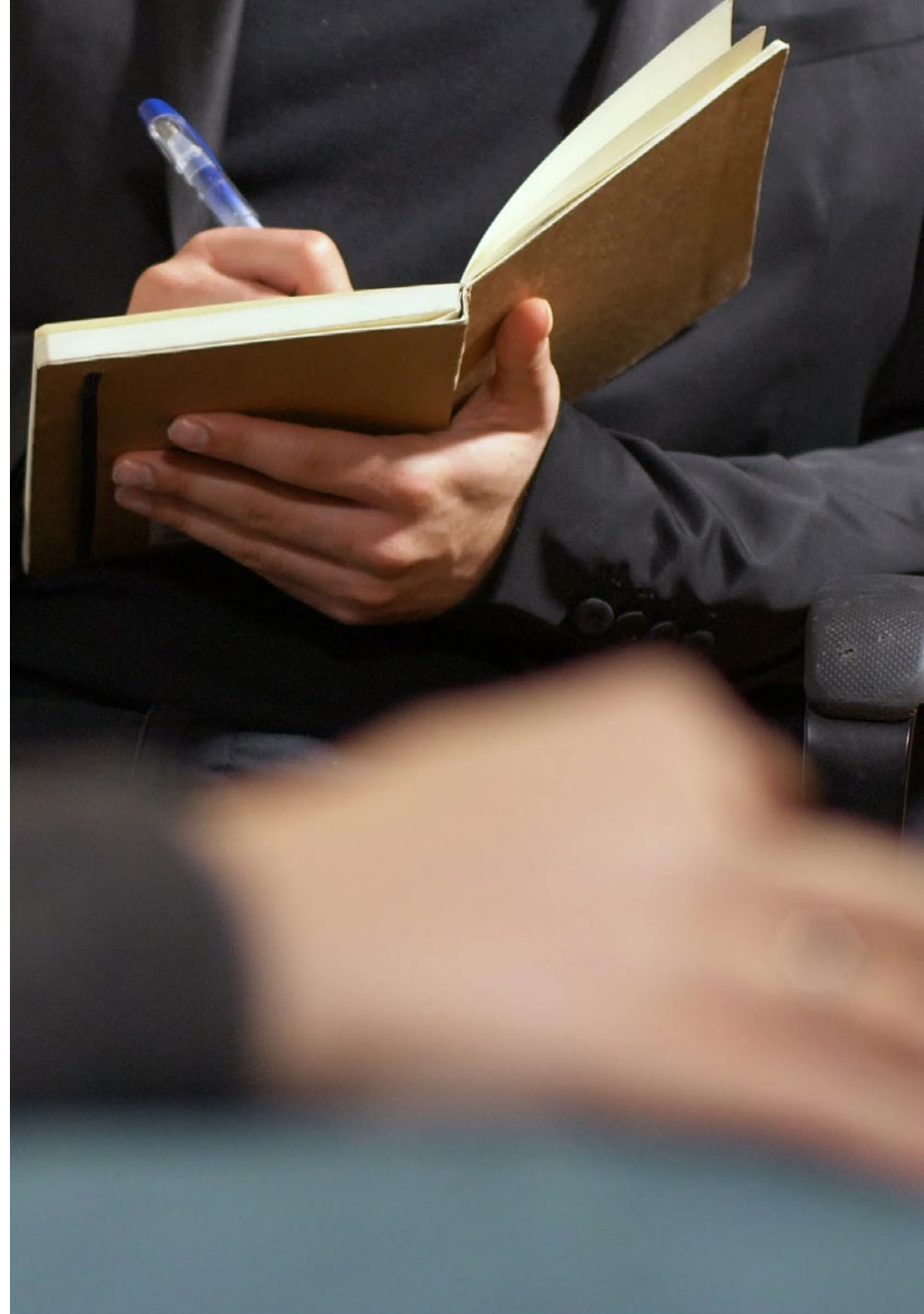
“

The simulation of real cases presented by the teaching staff will allow you to delve into the different cases of Psychotic Disorders and their treatment”



General Objectives

- ♦ Delve into the current classification of Psychotic Disorders in the different manuals: DSM-5 and ICD-11
- ♦ Consolidate the fundamental clinical aspects of Psychotic Disorders
- ♦ Gain knowledge about the evolution of Psychotic Disorders over time
- ♦ Identify the different types of Psychotic Disorders, their clinical characteristics and diagnosis
- ♦ Delve into the different diagnostic techniques and their new developments in Psychotic Disorders
- ♦ Perform a correct diagnostic approach to Psychotic Disorders
- ♦ Master the different pharmacological and psychotherapeutic approaches to Psychotic Disorders
- ♦ Detail and know the biopsychosocial influence of Psychotic Disorders in infantile-juvenile, adult and elderly stages
- ♦ Learn about new approaches to intervention in the rehabilitation of schizophrenia and psychotic disorders
- ♦ Delve into new lines of scientific research in psychotic disorders





Specific Objectives

Module 1. Relevant Aspects of the Psychotic Spectrum

- ♦ Carry out a historical review of Psychotic Disorders and the influence of the main authors on this pathology
- ♦ Review the location of Psychotic Disorders in the DSM-5 and ICD-11 classification
- ♦ Delve into the changes in Psychotic Disorders in the different manuals up to the DSM-5 and ICD-11

Module 2. Biological Principles of Schizophrenia and Other Psychotic Disorders

- ♦ Get to know the most relevant epidemiological aspects of psychotic disorders
- ♦ Analyze the biological factors that influence psychotic disorders
- ♦ Delve into the most relevant genetic, immunological and inflammatory aspects of Psychotic Disorders
- ♦ Gain knowledge about the biological developments in Psychotic Disorders

Module 3. Stages of Schizophrenia Throughout History

- ♦ Gain knowledge about the biological developments in Psychotic Disorders
- ♦ Review all clinical aspects of schizophrenia and its clinical features
- ♦ Get to know the etiological factors of psychotic disorders and their influence on the development of the disease
- ♦ Approach pharmacological and psychotherapeutic treatment in schizophrenia
- ♦ Gain knowledge about the repercussions of schizophrenia in the individual and at family level
- ♦ Analyze new developments in the field of schizophrenia

Module 4. Delusional Disorder

- ♦ Review the changes that have occurred in delusional disorder in diagnostic manuals and throughout history
- ♦ Delve into the epidemiology, pathogenesis and diagnosis of delusional disorder
- ♦ Address the pharmacological and psychotherapeutic treatment of delusional disorder
- ♦ Get to know the repercussions of delusional disorder in the individual and at the family level
- ♦ Analyze new developments in the field of delusional disorder

Module 5. Acute and Transitory Psychotic Disorder

- ♦ Master the pharmacological field and its new developments in Psychotic Disorders
- ♦ Delve into the complementary tests for a correct diagnosis of Psychotic Disorders
- ♦ Gain knowledge about the psychotherapeutic approach in Psychotic Disorders
- ♦ Delve into the pharmacological and psychotherapeutic treatment in delusional disorder
- ♦ Get to know the repercussions of delusional disorder in the individual and at the family level
- ♦ Analyze new developments in the field of delusional disorder

Module 6. Other Psychotic Entities

- ♦ Perform an adequate psychopathological examination of Psychotic Disorders
- ♦ Delve into the evolution of the different Psychotic Disorders
- ♦ Gain knowledge about the prognosis of the different Psychotic Disorders
- ♦ Get to know the multidisciplinary approach in Psychotic Disorders

Module 7. Special Considerations in the Approach and Treatment of Psychotic Disorders

- ♦ Get to know the most relevant concomitant pathologies associated with Psychotic Disorders and their influence on the course and prognosis
- ♦ Address current issues and new approaches in the treatment of psychotic disorders
- ♦ Update the characteristics of the evolution and prognosis of Psychotic Disorders
- ♦ Delve into Electroconvulsive Therapy (ECT) in Psychotic Disorders
- ♦ Address the use of Transcranial Magnetic Stimulation (TMS) in Psychotic Disorders

Module 8. Psychotic Disorders and Substance Use: Dual Pathology

- ♦ Learn about the effects of drugs on psychotic disorders
- ♦ Delve into the main substances used by users, their main characteristics and their correlation with psychotic disorders
- ♦ Delve into the legal framework of substance use and its relationship with the psychotic entity
- ♦ Delve into in new studies on this subject
- ♦ Address the issue of dual pathology in psychotic disorders





Module 9. Stigma and Quality of Life in Psychotic Disorders

- ♦ Approach the psychotic disorder from the point of view of stigma
- ♦ Get to know the repercussions of mental illness in the occupational, economic and social areas of the psychotic patient
- ♦ Update the quality of life of the psychotic patient and the limitations arising from the disease
- ♦ Address the coping, management and consequences of psychotic illness in families
- ♦ Delve into the coordination of biopsychosocial treatments

Module 10. Psychotic Disorders Today

- ♦ Management skills of the relationship with the patient, according to the frequent chronicity
- ♦ Enable the student to detect the presence of psychotic disorders in the different stages of life
- ♦ Enable the student to discuss new issues and debates on Psychotic Disorders
- ♦ Get to know the cultural and gender aspects and their influence on the approach to Psychotic Disorders

03

Skills

The structure of this online program allows students to delve into the different types of Psychotic Disorders, its evolution throughout history, the psychosocial and biological aspects that influence it, as well as the latest scientific advances in treatments to address this mental health problem. In this way, the psychologist will acquire competencies, incorporating in their daily work the latest postulates and clinical practice in Psychotic Disorders, guided by a highly qualified teaching team in this area.





“

Delve into the rehabilitative stage in schizophrenia and incorporate into your daily practice the latest treatments to address its symptoms”

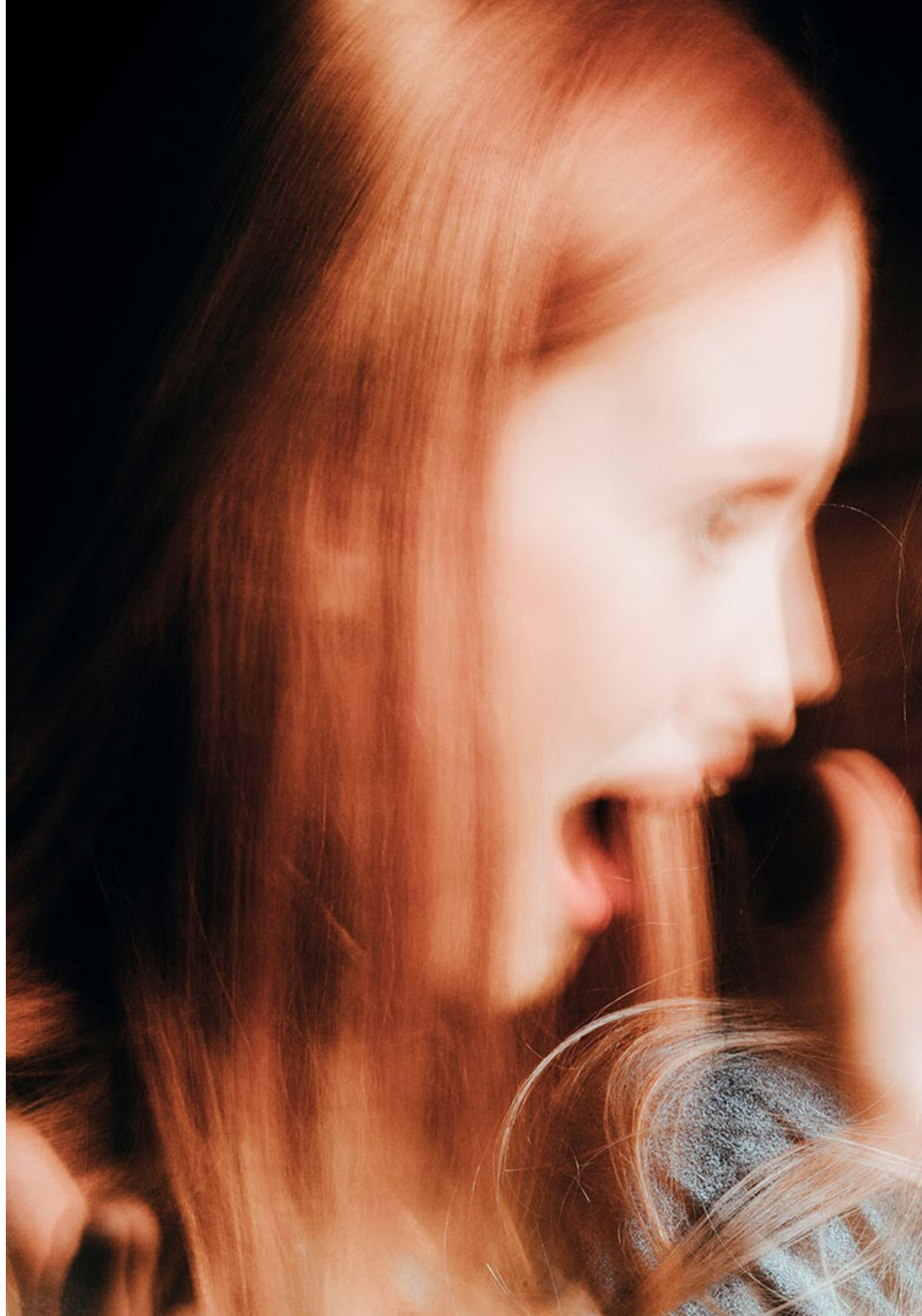


General Skills

- Get to know the legal aspects in the field of psychotic entities
- Review the cultural and gender influence on psychotic disorders
- Delve into the most relevant political aspects that influence and mark the actuality of Psychotic Disorders

“

Address the management and psychotic consequences in families obtaining a renewed focus on the role of mental institutions, lifestyle with Psychotic Disorders and economic and occupational repercussions of the same”





Specific Skills

- Be able to coordinate biopsychosocial treatments
- Get to know the treatments in cases of refractoriness
- Implement the student's competence and skill in interviewing patients and family members
- Deal with coping, management and consequences of psychotic illness in families
- Gain knowledge about how to manage and choose pharmacological treatments according to their evidence/efficacy/effectiveness

04

Course Management

TECH maintains the philosophy of offering the professional a quality education according to the demands of the sector. That is why in this program the students have a teaching team specialized in the field of psychology, with a high educational qualification and a current experience in hospitals and clinics of reference. All this will provide a closer knowledge of the existing problems in mental health and the latest developments in the treatment and approach to Psychotic Disorders. Likewise, the teaching staff will accompany the professional during the 12 months of this program so that they can achieve their objectives.



“

Update your knowledge with a teaching team active in hospitals and clinics relevant to the healthcare field”

Management



Dr. Soto Laguna, Marta

- ♦ Expert in Anxiety Disorders
- ♦ Psychiatrist at Enova Medical Center
- ♦ Author and co-author of book chapters related to Psychiatry
- ♦ Co-author of articles for scientific journals
- ♦ Speaker at congresses and conferences in her specialty
- ♦ Master's Degree in Legal Psychiatry from the Complutense University of Madrid

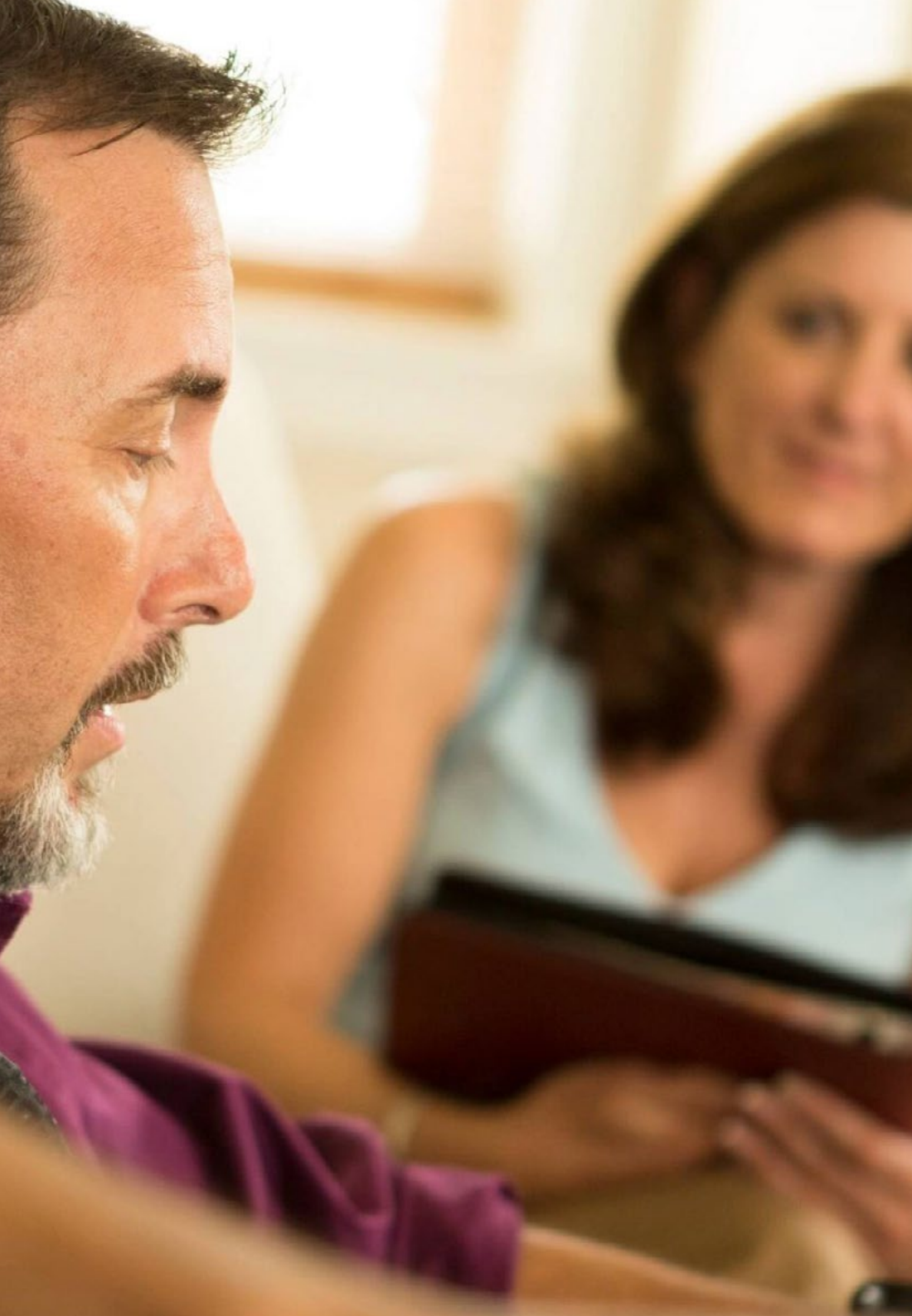
Professors

Dr. Neira Romeral, Pedro Pablo

- ♦ General Health Psychologist at López Ibor Clinic
- ♦ Psychologist in the Dual Pathology and Addictions Unit at López Ibor Clinic
- ♦ Co-founder and member of the teaching and creative team of the non-profit organization "PsyCast"
- ♦ Teacher and Tutor in programs on Emotional Intelligence and Intervention in Emotions and Health
- ♦ Graduate in Psychology at the Complutense University of Madrid
- ♦ Master's Degree in General Health Psychology at the Complutense University of Madrid
- ♦ Specialist in Anxiety and Stress Intervention at the Complutense University of Madrid

Dr. Zamorano Castellanos, Sara

- ♦ General Health Psychologist
- ♦ Health Psychologist in the Clinical Unit of the Master's Degree in Clinical Psychology in Professional Practice
- ♦ Psychologist in the Child and Adolescent Unit at the Gregorio Marañón Hospital
- ♦ Specialist in Clinical Psychology Practice at the Complutense University of Madrid
- ♦ Master's Degree in General Health Psychology from the Complutense University of Madrid
- ♦ Degree in Psychology from the Complutense University of Madrid



Dr. Bullón Sáez, Alberto

- ♦ Medical specialist in Psychiatry at the López Ibor Clinic
- ♦ Psychiatrist in the Hospitalization Unit. Severe Mental Disorder-Psychotic Disorders at the López Ibor Clinic
- ♦ President of the Spanish Society of Psychiatry Residents
- ♦ International Delegate in the European Federation of Psychiatric Trainees EFPT
- ♦ Interuniversity Master's Degree in Initiation to Research in Mental Health at the Complutense University of Madrid
- ♦ Master's Degree in Psychopharmacology at the University of Valencia
- ♦ University Expert in Biostatistics at the European University Miguel de Cervantes
- ♦ University Expert in Bipolar Disorder from the University of Barcelona
- ♦ Degree in Medicine from the European University

Dr. Alberdi Páramo, Iñigo

- ♦ Psychiatrist Expert in Psychotic Disorders
- ♦ Area Specialist in Psychiatric Hospitalization Unit/Psychogeriatrics at the Institute of Psychiatry and Mental Health of the San Carlos Clinical Hospital
- ♦ Area Specialist in Outpatient Psychiatry Liaison Psychiatry and Specialized Service in Mental Health in Intellectually Handicapped at the University Hospital La Princesa
- ♦ Area Specialist of Psychiatry in CSM Chamberí - Carabanchel
- ♦ Author and co-author of numerous scientific articles and book chapters
- ♦ Professor in undergraduate and postgraduate university studies
- ♦ Doctor in Medicine - Psychiatry by the Complutense University of Madrid
- ♦ University Specialist in Clinical and Psychoanalytic Psychotherapy by the Pontifical University of Comillas

05

Structure and Content

The syllabus of this Professional Master's Degree has been developed by a teaching team with the aim of providing students with an education with up-to-date and innovative content in the field of psychology. In this way, in the 10 modules that make up this program, the professional will make a deep journey through the most relevant aspects of the psychotic spectrum, acquiring a renewed knowledge about schizophrenia, acute and transient psychotic disorder, its approach and treatment, the disuse of certain drugs, rehabilitation and current lines in social intervention in patients with psychotic disorder, as well as attention to the family environment. All this with an extensive syllabus with multimedia content consisting of video summaries of each topic and specialized readings that will facilitate the professional's learning.



“

The multimedia resource library with video summaries and specialized readings completes this Professional Master's Degree, offering you a comprehensive educational option to get you up to date in Psychotic Disorders”

Module 1. Relevant Aspects of the Psychotic Spectrum

- 1.1. The Psychotic Spectrum within Mental Disorders
- 1.2. Differentiation between Hallucination, Delusion, Delirium and Illusion
 - 1.2.1. Classification
 - 1.2.2. Differential Aspects at the Clinical Level
- 1.3. Current Classification of Psychotic Disorders in DSM-5
- 1.4. Modifications of the DSM-5 Regarding Previous Editions
- 1.5. Current Classification of Psychotic Disorders in ICD-11
- 1.6. Modifications of the ICD-11 Regarding Previous Editions
- 1.7. Emil Kraepelin and Kurt Schneider
 - 1.7.1. Contribution to Psychotic Entities
- 1.8. Psychosis
 - 1.8.1. Conceptualization in History
- 1.9. Freud, Contributions to Psychotic Nosology
 - 1.9.1. Freud and Psychoanalysis
- 1.10. New Authors of the 21st Century in Psychotic Entities
 - 1.10.1. Benefits

Module 2. Biological Principles of Schizophrenia and Other Psychotic Disorders

- 2.1. The Neurobiology of Psychosis
 - 2.1.1. The Brain and Psychosis
- 2.2. Genetic Aspects in Psychotic Disorders
- 2.3. Neuroendocrinological Principles in Psychotic Disorders
- 2.4. Role of Immunology in Psychotic Disorders
- 2.5. Influence of Inflammatory Factors in the Psychotic Spectrum
- 2.6. Neurobiological Aspects of Psychosis in the Different Stages of Life
 - 2.6.1. Children and Adolescents
 - 2.6.2. Adult
 - 2.6.3. Elderly
- 2.7. Etiopathogenesis of Psychotic Disorders and its Influence on the Evolution of the Disorder
 - 2.7.1. Risk Factors
 - 2.7.2. Protective Factors

- 2.8. Neuroimaging in Psychosis
- 2.9. Approach to Refractory Psychotic Disorders
- 2.10. Current Positioning of Psychotic Entities in the Biological Plane
 - 2.10.1. Scientific Developments

Module 3. Stages of Schizophrenia Throughout History

- 3.1. Origin of Schizophrenia
 - 3.1.1. The Evolution of Schizophrenia up to the Present Day
 - 3.1.2. Eugen Bleuler and the Onset of Schizophrenia
- 3.2. Schizophrenia and its Clinical Forms
 - 3.2.1. Differential Clinical Features
 - 3.2.2. Epidemiology
- 3.3. Late-Onset Schizophrenia
 - 3.3.1. Clinical Form
 - 3.3.2. Prognosis
- 3.4. Diagnostic Approach and Differential Diagnosis
- 3.5. Prognosis and Evolution
 - 3.5.1. Changes in the Paradigm of the Schizophrenia Patient
- 3.6. Pharmacological Approach
 - 3.6.1. New Pharmacological Proposals
- 3.7. Psychotherapeutic Intervention: Modalities and New Developments
- 3.8. Gender Differences
 - 3.8.1. Quality of Life and Limitations
- 3.9. The Rehabilitative Stage in Schizophrenia
- 3.10. Strategies for Family Approach in Schizophrenia

Module 4. Delusional Disorder

- 4.1. Current DSM-V Classification and Changes from Other Editions
- 4.2. The Different Connotations of Delusional Disorder up to the 21st Century
 - 4.2.1. Epidemiology and Current Figures
- 4.3. Clinical Features of Delusional Disorder
 - 4.3.1. Classification of the Different Subtypes of Delusional Disorders
- 4.4. Diagnostic Modalities in Delusional Disorder



- 4.5. Evolution of this Disorder
 - 4.5.1. Prognosis According to Age Ranges
- 4.6. Vital Repercussion and Quality of Life of Patients with Delusional Disorder
- 4.7. Pharmacological Treatment Proposals
 - 4.7.1. The Patient's Awareness of Illness
- 4.8. The Psychotherapeutic Approach and Rehabilitation Strategies
- 4.9. Delusional Disorder up to at Different Stages of Life
- 4.10. Scientific Advances in Delusional Disorder
 - 4.10.1. Studies and Current Situation

Module 5. Acute and Transitory Psychotic Disorder

- 5.1. Conceptualization and Nosological Changes up to the Present Day
- 5.2. Epidemiology and Current Situation
- 5.3. Epidemiology and Current Situation
- 5.4. Diagnosis and Differential Diagnosis
- 5.5. Course and Prognosis
 - 5.5.1. Risk Factors and Protection in its Evolution
- 5.6. Gender and its Different Presentations in this Psychotic Entity
- 5.7. Influence of Substance use in its Onset and Development
 - 5.7.1. Studies and Expert Voices on the Subject
- 5.8. Acute Psychotic Disorder in Adolescents
 - 5.8.1. Connotations and Future Repercussions
- 5.9. Pharmacological Approach
 - 5.9.1. Impact of Treatment in the Short, Medium and Long Term
- 5.10. Psychotherapeutic Approach
 - 5.10.1. Relevant Aspects in New Approaches

Module 6. Other Psychotic Entities

- 6.1. Schizoaffective Disorder (SAD) and its Evolution in the Classification up to DSM-5
 - 6.1.1. Etiopathogenesis of SAD
 - 6.1.2. Epidemiology
- 6.2. SAD: Clinical Features and Evolution
- 6.3. Diagnosis and Differential Diagnosis of SAD

- 6.4. Approach to SAD
 - 6.4.1. Pharmacological
 - 6.4.2. Psychotherapeutic
 - 6.4.3. Prognosis
- 6.5. Schizophreniform Disorder
 - 6.5.1. Epidemiology
 - 6.5.2. Clinical Aspects and Diagnosis
- 6.6. Evolution of Schizophreniform Disorder
 - 6.6.1. Prognosis
- 6.7. Treatment of Schizophreniform Disorder
 - 6.7.1. Pharmacological
 - 6.7.2. Psychotherapeutic Aspects
- 6.8. Catatonia
 - 6.8.1. Etiological Factors
 - 6.8.2. Clinical Manifestations
- 6.9. Diagnosis of Catatonia
 - 6.9.1. Differential Diagnosis of Catatonia
- 6.10. Evolution of Catatonia
 - 6.10.1. Prognosis of Catatonia

Module 7. Special Considerations in the Approach and Treatment of Psychotic Disorders

- 7.1. Pharmacological Treatment or not of Psychotic Disorders
 - 7.1.1. A Difficult Debate to Close
- 7.2. Changes in Pharmacological Treatment up to the Present Day
 - 7.2.1. The Abandonment of Certain Drugs
- 7.3. Antipsychotics and their Influence on the Patient's Quality of Life
 - 7.3.1. Factors that Determine Correct Adherence
- 7.4. Other Pharmacological Modalities Used in Psychotic Disorders
- 7.5. Pharmacological Developments
 - 7.5.1. New and Relevant Studies

- 7.6. Influence of Medication on the Brain
 - 7.6.1. Responses through Neuroimaging
- 7.7. Suicide in Psychotic Disorders
 - 7.7.1. Current Figures and Special Considerations
 - 7.7.2. Approach
- 7.8. Electroconvulsive Therapy (ECT) and its use in Psychotic Disorders
 - 7.8.1. Indications in the Psychotic Spectrum
- 7.9. Transcranial Magnetic Stimulation (TMS) and Psychotic Disorders
 - 7.9.1. Indications in the Psychotic Spectrum
- 7.10. Conduction and Psychotropic Drugs in Psychotic Disorders
 - 7.10.1. Legal Aspects

Module 8. Psychotic Disorders and Substance Use: Dual Pathology

- 8.1. Dual Pathology
 - 8.1.1. Conceptualization and Evolution of the Concept
- 8.2. Cannabis and Psychosis
 - 8.2.1. Psychopathological Characteristics
 - 8.2.2. Current Data
- 8.3. Excitants and Psychosis
 - 8.3.1. Psychopathological Characteristics
- 8.4. Opiates and Psychosis
 - 8.4.1. Psychopathological Characteristics
 - 8.4.2. Current Problem of its Use
- 8.5. Alcohol and Psychosis
 - 8.5.1. Main Clinical Framework
- 8.6. Comorbidities in Substance Use
- 8.7. The Legal Framework in Dual Pathology
 - 8.7.1. Current Relevant Aspects
 - 8.7.2. Legal or Illegal
- 8.8. Prognosis and Evolution in Psychotic Disorder with Substance Abuse
- 8.9. Pharmacological Approach and New Aspects
- 8.10. Psychotherapeutic Approach and Rehabilitation
 - 8.10.1. Family Dynamics

Module 9. Stigma and Quality of Life in Psychotic Disorders

- 9.1. Mental Disorder
 - 9.1.1. Evolution of the Connotation of Mental Illness up to the Present Day
- 9.2. Stigma and its Meaning in Patients with Psychotic Disorder
- 9.3. Life with a Psychotic Disorder
 - 9.3.1. Lifestyle and Limitations
- 9.4. Economic and Occupational Repercussions of Psychotic Disorders
- 9.5. Impact of the Disease on the Quality of Life and Life Goals
- 9.6. Social Work
 - 9.6.1. Treatment Devices in Today's Society for the Approach of Psychotic Disorders
- 9.7. Coping Strategies and Skills in Psychotic Disorders
 - 9.7.1. At the Individual Level
 - 9.7.2. At the Family Level
- 9.8. Involvement of Institutions in Mental Health: Changes in the Policy Sector
- 9.9. Rehabilitation and Current Lines in Social Intervention in Patients with Psychotic Disorders
- 9.10. The Psychotic Patient's Family and Current Working Models
 - 9.10.1. Coping with Psychotic Disorders in Today's Society

Module 10. Psychotic Disorders Today

- 10.1. The Psychotic Entity and its Shift of Focus in the Social Paradigm
- 10.2. Gender Perspective in Psychotic Disorders
 - 10.2.1. The Evolution of Women in Mental Health
- 10.3. Current Approach to Psychotic Disorders in Mental Healthcare
 - 10.3.1. New Studies
- 10.4. The Cultural Influence on the View of the Psychotic Spectrum
- 10.5. Internment of Psychotic Disorders
 - 10.5.1. New Conceptualization of "Psychiatric"
 - 10.5.2. New Voices and Ideological Proposals
- 10.6. The Law and Psychotic Disorders
 - 10.6.1. Mechanical Restraint and its Peculiarities in Mental Health

- 10.7. New Social Policies in Mental Health and their Impact on the Psychotic Spectrum
- 10.8. Multidisciplinary Model in the Therapeutic Approach to Psychotic Disorders
- 10.9. New Perspectives and Diagnostic Approaches in the Psychotic Spectrum
- 10.10. Future Challenges
 - 10.10.1. Current Lines of Research in Psychotic Disorders



Delve into the new social policies in mental health and their impact on the psychotic spectrum in this Professional Master's Degree"

06

Methodology

This academic program offers students a different way of learning. Our methodology uses a cyclical learning approach: **Relearning**.

This teaching system is used, for example, in the most prestigious medical schools in the world, and major publications such as the **New England Journal of Medicine** have considered it to be one of the most effective.



“

Discover Relearning, a system that abandons conventional linear learning, to take you through cyclical teaching systems: a way of learning that has proven to be extremely effective, especially in subjects that require memorization"

At TECH we use the Case Method

What should a professional do in a given situation? Throughout the program, students will face multiple simulated clinical cases, based on real patients, in which they will have to do research, establish hypotheses, and ultimately resolve the situation. There is an abundance of scientific evidence on the effectiveness of the method. Specialists learn better, faster, and more sustainably over time.

With TECH the psychologist experiences a way of learning that is shaking the foundations of traditional universities around the world.



According to Dr. Gérvas, the clinical case is the annotated presentation of a patient, or group of patients, which becomes a "case", an example or model that illustrates some peculiar clinical component, either because of its teaching power or because of its uniqueness or rarity. It is essential that the case is based on current professional life, trying to recreate the real conditions in the psychologist's professional practice.

“

Did you know that this method was developed in 1912, at Harvard, for law students? The case method consisted of presenting students with real-life, complex situations for them to make decisions and justify their decisions on how to solve them. In 1924, Harvard adopted it as a standard teaching method”

The effectiveness of the method is justified by four fundamental achievements:

1. Psychologists who follow this method not only master the assimilation of concepts, but also develop their mental capacity by means of exercises to evaluate real situations and apply their knowledge.
2. Learning is solidly translated into practical skills that allow the psychologist to better integrate knowledge into clinical practice.
3. Ideas and concepts are understood more efficiently, given that the example situations are based on real-life.
4. Students like to feel that the effort they put into their studies is worthwhile. This then translates into a greater interest in learning and more time dedicated to working on the course.



Relearning Methodology

At TECH we enhance the case method with the best 100% online teaching methodology available: Relearning.

Our university is the first in the world to combine the study of clinical cases with a 100% online learning system based on repetition, combining a minimum of 8 different elements in each lesson, which is a real revolution compared to the simple study and analysis of cases.

The psychologist will learn through real cases and by solving complex situations in simulated learning environments. These simulations are developed using state-of-the-art software to facilitate immersive learning.



At the forefront of world teaching, the Relearning method has managed to improve the overall satisfaction levels of professionals who complete their studies, with respect to the quality indicators of the best online university (Columbia University).

This methodology has trained more than 150,000 psychologists with unprecedented success in all clinical specialties. Our pedagogical methodology is developed in a highly competitive environment, with a university student body with a strong socioeconomic profile and an average age of 43.5 years old.

Relearning will allow you to learn with less effort and better performance, involving you more in your training, developing a critical mindset, defending arguments, and contrasting opinions: a direct equation for success.

In our program, learning is not a linear process, but rather a spiral (learn, unlearn, forget, and re-learn). Therefore, we combine each of these elements concentrically.

The overall score obtained by our learning system is 8.01, according to the highest international standards.



This program offers the best educational material, prepared with professionals in mind:



Study Material

All teaching material is produced by the specialists who teach the course, specifically for the course, so that the teaching content is highly specific and precise.

These contents are then applied to the audiovisual format, to create the TECH online working method. All this, with the latest techniques that offer high quality pieces in each and every one of the materials that are made available to the student.



Latest Techniques and Procedures on Video

TECH introduces students to the latest techniques, to the latest educational advances, to the forefront of current psychology. All of this in direct contact with students and explained in detail so as to aid their assimilation and understanding. And best of all, you can watch the videos as many times as you like.



Interactive Summaries

The TECH team presents the contents attractively and dynamically in multimedia lessons that include audio, videos, images, diagrams, and concept maps in order to reinforce knowledge.

This exclusive educational system for presenting multimedia content was awarded by Microsoft as a "European Success Story".



Additional Reading

Recent articles, consensus documents and international guidelines, among others. In TECH's virtual library, students will have access to everything they need to complete their course.





Expert-Led Case Studies and Case Analysis

Effective learning ought to be contextual. Therefore, TECH presents real cases in which the expert will guide students, focusing on and solving the different situations: a clear and direct way to achieve the highest degree of understanding.



Testing & Retesting

We periodically evaluate and re-evaluate students' knowledge throughout the program, through assessment and self-assessment activities and exercises, so that they can see how they are achieving their goals.



Classes

There is scientific evidence suggesting that observing third-party experts can be useful.
Learning from an Expert strengthens knowledge and memory, and generates confidence in future difficult decisions.



Quick Action Guides

TECH offers the most relevant contents of the course in the form of worksheets or quick action guides. A synthetic, practical, and effective way to help students progress in their learning.



07

Certificate

The Professional Master's Degree in Psychotic Disorders guarantees students, in addition to the most rigorous and up-to-date education, access to a Professional Master's Degree diploma issued by TECH Technological University.



“

Successfully complete this program and receive your university qualification without having to travel or fill out laborious paperwork”

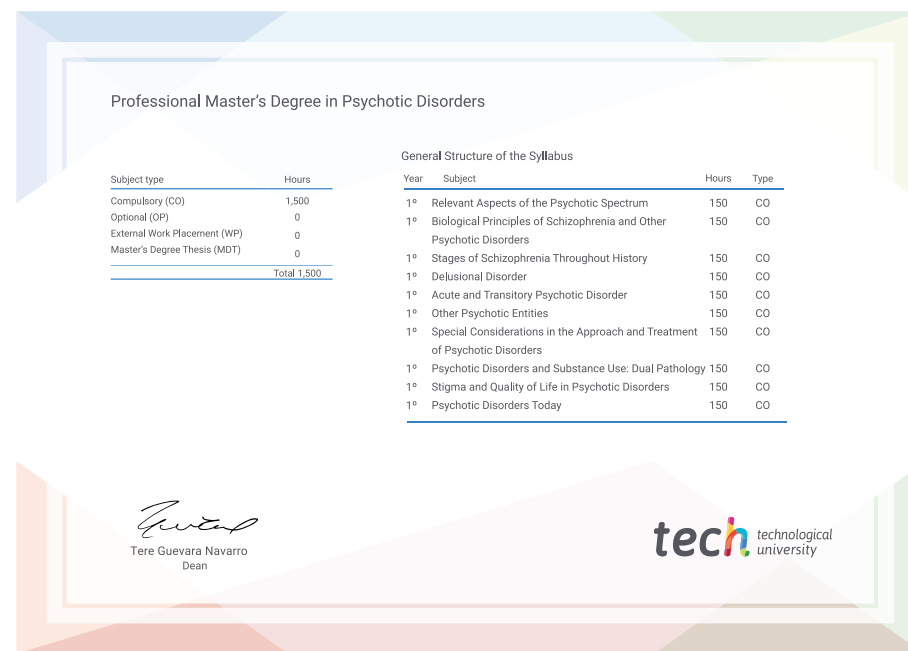
This **Professional Master's Degree in Psychotic Disorders** contains the most complete and up-to-date program on the market.

After the student has passed the assessments, they will receive their corresponding **Professional Master's Degree** issued by **TECH Technological University** via tracked delivery*.

The diploma issued by **TECH Technological University** will reflect the qualification obtained in the Professional Master's Degree, and meets the requirements commonly demanded by labor exchanges, competitive examinations, and professional career evaluation committees.

Title: **Professional Master's Degree in Psychotic Disorders**

Official N° of Hours: **1,500 h.**



*Apostille Convention. In the event that the student wishes to have their paper diploma issued with an apostille, TECH EDUCATION will make the necessary arrangements to obtain it, at an additional cost.

future

health confidence people

education information tutors

guarantee accreditation teaching

institutions technology learning

community commitment

personalized service innovation

knowledge present quality

online

development languages

virtual classroom

tech technological
university

Professional Master's Degree Psychotic Disorders

- » Modality: online
- » Duration: 12 months
- » Certificate: TECH Technological University
- » Dedication: 16h/week
- » Schedule: at your own pace
- » Exams: online

Professional Master's Degree Psychotic Disorders