

Postgraduate Diploma Assessment in Expert Psychodiagnosis





Postgraduate Diploma Assessment in Expert Psychodiagnosis

- » Modality: online
- » Duration: 6 months
- » Certificate: TECH Technological University
- » Dedication: 16h/week
- » Schedule: at your own pace
- » Exams: online

Website: www.techtitute.com/us/psychology/postgraduate-diploma/postgraduate-diploma-assessment-expert-psychodiagnosis

Index

01

Introduction

p. 4

02

Objectives

p. 8

03

Course Management

p. 12

04

Structure and Content

p. 16

05

Methodology

p. 20

06

Certificate

p. 28

01

Introduction

Determining the mental state of subjects through the evaluation in the expert diagnosis is one of the main tools of Forensic Psychology. This practice contemplates a series of procedures through which professionals are able to analyze the possible consequences that have affected a victim of a traumatic event, something that can be crucial for the establishment of a legal opinion in any legal process. And given the important role played by professional psychologists in this type of situation, TECH has developed a comprehensive program that will allow you to delve into the various evaluation processes in the expert psychodiagnosis through 400 hours of multidisciplinary content delivered 100% online. You will be able to improve your skills wherever you are through the use of the most innovative techniques available today.



“

A unique opportunity to learn the most innovative and effective evaluation techniques in detail through 100% online education at the highest level"

Psychological evaluation has become one of the most widely used tools in judicial proceedings, since based on its test results it is possible to determine the state of mental health of the individuals involved, becoming a resource of vital importance for developing the verdict. Professionals in this field, through the psychodiagnostic guidelines, are able to delve into the mind of individuals, analyzing the causes of their behavior, as well as the consequences that have resulted from it. This is a field of special interest and relevance within Forensic Psychology, which also contemplates a very broad and diverse field of action depending on the analysis techniques that have been implemented in recent years.

For this reason, and in order to provide students with the most exhaustive information that will allow them to specialize in this area and update their practice according to the latest concepts, TECH has developed a comprehensive program based on the latest scientific results. Therefore, with this Postgraduate Diploma in Evaluation in Expert Psychodiagnosis, students will have the opportunity to delve into the different projective guidelines that have been designed for expert assessment, focusing on the most effective tests (such as the Rorschach test or the desiderative tests), on the most innovative techniques (such as expressive, playful or fable-based) and on the most enlightening questionnaires in the current mental health environment. In addition, you will be able to work intensively on perfecting your skills in behavioral assessment through the mastery of the various scales and credibility studies of the story.

This way, throughout the 400 hours of 100% online academic experience, students will experience considerable professional growth based on acquiring both the broadest and most specialized knowledge. And for this, students will have the best theoretical, practical and additional content, which will be available in its entirety from the beginning of the program in the state-of-the-art Virtual Campus that will be made available once they have enrolled. Therefore, TECH offers a flexible and dynamic program that adapts to the needs of all students, without schedules or on-site classes and with the guarantee of learning from the largest digital university in the world.

This **Postgraduate Diploma in Assessment in Expert Psychodiagnosis** contains the most complete and up-to-date program on the market. Its most notable features are:

- ♦ The development of practical cases presented by experts in Forensic Psychology
- ♦ The graphic, schematic, and practical contents with which they are created, provide scientific and practical information on the disciplines that are essential for professional practice
- ♦ Practical exercises where the self-assessment process can be carried out to improve learning
- ♦ Its special emphasis on innovative methodologies
- ♦ Theoretical lessons, questions to the expert, debate forums on controversial topics, and individual reflection assignments
- ♦ Content that is accessible from any fixed or portable device with an Internet connection



By mastering the expressive techniques that you will acquire with this Postgraduate Diploma, you will be able to work with more alternatives when dealing with the different cases submitted for expertise"

“

Would you like to know the main figures to dynamically determine the levels of dependence and autonomy in detail? This program includes a specific module specifically devoted to it”

Among the additional content of this program, you will find tests and questionnaires based on the most innovative psychodiagnostics strategies to use with your patients.

The program's teaching staff includes professionals from the sector who contribute their work experience to this educational program, as well as renowned specialists from leading societies and prestigious universities.

The multimedia content, developed with the latest educational technology, will provide the professional with situated and contextual learning, i.e., a simulated environment that will provide immersive education programmed to learn in real situations.

This program is designed around Problem-Based Learning, whereby the professional must try to solve the different professional practice situations that arise during the academic year. For this purpose, the student will be assisted by an innovative interactive video system created by renowned and experienced experts.



02

Objectives

Psychodiagnostic assessment and mental health evaluation tools in judicial proceedings and in those cases requiring forensic specialists are crucial in legislative contexts involving a malicious act in order to analyze the magnitude of its consequences. For this reason, TECH has considered it necessary to design a program focused on the most innovative information in this field, which will allow students to update their practice based on the most effective strategies in the current scenario.





“

Would you like to be able to implement the most innovative sychodiagnostics strategies for analysis through free drawing in your practice? If the answer is yes, then this program is perfect for you”



General Objectives

- ♦ Identify the instruments that help to differentiate between simulation and lying, as well as know how to contain the emotional state of patients undergoing the expert assessment
- ♦ Discover the individual differences of people after identical test results

“

High-quality detailed images and videos are available to help you identify psychometric parameters in a simple, accurate and effective way”





Specific Objectives

Module 1. Evaluation Process in Expert Psychodiagnostics

- ♦ Identify the divergent points between digital and analog communication within the framework of expert psychology
- ♦ Reflect on the patient's subjective mobilizing factors
- ♦ Structure appropriate assessment protocols according to the ages and the area to be assessed

03

Course Management

This Postgraduate Diploma's teaching team is made up of a group of professionals in the field of Forensic Psychology, all of them experienced in the successful participation in different judicial processes through expert psychodiagnosis. In addition, they are currently working professionals, so they know the most effective strategies for mental health analysis in detail, as well as techniques adapted to the different profiles of victims and defendants. This way, students will be able to specialize in this field under the guidance of the best, using their experience to elevate their practice to the highest level.





“

The teaching team has selected clinical cases from their own experience so that you can solve them through the sychodiagnostics strategies included in this program, guaranteeing its application”

Management



Ms. Gascón Martín, Laura

- ♦ Director of the assessment and psychotherapy center of Talavera de la Reina
- ♦ Specialist in Forensic and Legal Psychology
- ♦ Psychologist of the Courts 1 and 2 of Toledo
- ♦ Coordinator in Toledo of emergency intervention and psychological assistance plan
- ♦ Director of the Postgraduate Diploma in Psychodiagnosis and Legal Expertise from the European Institute of Time-Limited Psychotherapies
- ♦ Coordinator of the gender violence plan of the Society for Time-Limited Psychotherapies
- ♦ Master's Degree in Time-Limited Psychotherapy and Health Psychology
- ♦ Adult Psychotherapy Expert

Professors

Aguado Romo, Roberto

- ◆ Psychologist specializing in Clinical Psychology
- ◆ Psychologist European specialist in Psychotherapy
- ◆ Managing Director of the evaluation and psychotherapy centers in Madrid, Bilbao and Talavera de la Reina
- ◆ Researcher at CerNet, Emotional Network, and European Institute for Time-Limited Psychotherapies

D. De Dios González, Antonio

- ◆ Director of Avatar Psychologists
- ◆ Director of the Psychology Department of Hospital Quirón de Marbella
- ◆ Transpersonal Therapist by the Spanish School of Transpersonal Development
- ◆ Specialist in Clinical Hypnosis and Relaxation
- ◆ Master's Degree in Time-Limited Psychotherapy and Health Psychology by the European Institute of Time-Limited Psychotherapies
- ◆ EFT Specialist by the World Center for EFT
- ◆ Master's Degree in Neuro-Linguistic Programming (NLP) by Richard Bandler's Society of Neuro-Linguistic Programming

Gandarias, Gorka

- ◆ Health Psychologist
- ◆ European specialist psychologist in Psychotherapy by the EFPA in Vitoria, Spain
- ◆ Master's Degree in Time-Limited Psychotherapy and Health Psychology
- ◆ Expert in intervention in bizarre behavior and drug addiction

Ms. González, Mónica

- ◆ Psychologist in charge of the Department of Child and Adolescent Psychology in the Quirón Hospital and Avatar Psychologists in Marbella
- ◆ Master's Degree in Time-Limited Psychotherapy and Health Psychology by the European Institute of Time-Limited Psychotherapy (IEPTL)

Fernández Sánchez, Angel

- ◆ European specialist psychologist in Psychotherapy from the EFPA
- ◆ Health Psychologist
- ◆ Director of the Evaluation and Psychotherapy Center of Madrid
- ◆ Specialist in Clinical Hypnosis and Relaxation
- ◆ Master's Degree in Clinical and Health Psychology

Dr. Martínez-Lorca, Manuela

- ◆ Health Psychologist
- ◆ Specialist in Clinical Hypnosis and Relaxation
- ◆ Lecturer in the Department of Psychology at the UCLM
- ◆ Doctorate in Psychology from the University of Castilla-La Mancha
- ◆ Master's Degree in Time-Limited Psychotherapy and Health Psychology by the European Institute of Time-Limited Psychotherapies

Ms. Roldán, Lucía

- ◆ Health Psychologist
- ◆ Cognitive-behavioral intervention specialist
- ◆ Master's Degree in Time-Limited Psychotherapy and Health Psychology
- ◆ Expert in energy therapy intervention

04

Structure and Content

TECH is a pioneer in the entire university panorama for the use of the successful and innovative pedagogical methodology of *Relearning*, which consists of the continuous reiteration of the most important concepts throughout the syllabus, thus encouraging a natural and progressive acquisition of knowledge, and avoiding long memorization hours. In addition, it is a strategy that also focuses on the resolution of practical cases based on real situations, adding dynamism to the academic experience and increasing its effectiveness.



“

The time you will save thanks to the use of the Relearning methodology can be invested in expanding each section of the syllabus using the dozens of hours of additional material included in this Postgraduate Diploma"

Module 1. Evaluation Process in Expert Psychodiagnostics

- 1.1. Projective Techniques in Expert Appraisal
 - 1.1.1. Characteristics and Types of Projective Techniques
- 1.2. Rorschach Test
 - 1.2.1. Application
 - 1.2.2. Presentation of Sheets
 - 1.2.3. Reaction Time
 - 1.2.4. Time of the Patient in Front of the Sheet
 - 1.2.5. Removal of Sheet and Survey
 - 1.2.6. Rorschach Assessment
 - 1.2.7. Aperture Modes
 - 1.2.8. Contents
 - 1.2.9. Frequency (F)
- 1.3. Expressive Techniques
 - 1.3.1. Graphic Tests
 - 1.3.2. Drawing Size
 - 1.3.3. Drawing Projection
 - 1.3.4. Position in the Sheet
 - 1.3.5. Shape of the Stroke
 - 1.3.6. Strength of the Stroke
 - 1.3.7. Continuity of the Stroke
 - 1.3.8. Personal Style
- 1.4. Drawing (HTP)
 - 1.4.1. The House
 - 1.4.2. The Tree
 - 1.4.3. Wittgenstein's Index
 - 1.4.4. Human Figure
- 1.5. Free Drawing
 - 1.5.1. Development
 - 1.5.2. Analysis
 - 1.5.3. Free Drawing Quality
 - 1.5.4. Advantage and Disadvantage



- 1.6. Family Drawing
 - 1.6.1. Graphic Plane
 - 1.6.2. Structural Plane
 - 1.6.3. Content Plane or Clinical Interpretation
 - 1.6.4. Psychoanalytic Interpretation
- 1.7. Düss Fables
 - 1.7.1. Bird Fable: Degree of Dependence- Independence, Autonomy
 - 1.7.2. Marriage Anniversary Fable: Oedipus Complex
 - 1.7.3. Lamb Fable: Fraternal Jealousy, Weaning Complex
 - 1.7.4. Burial Fable: Loss, Guilt, Aggressiveness, Death Wishes
 - 1.7.5. Fear Fable: Fears
- 1.8. Desiderative Test
- 1.9. Max Lüscher Color Test
 - 1.9.1. Color Test
 - 1.9.2. Meaning of the Eight Places
 - 1.9.3. Function Interpretation
 - 1.9.4. Basic and Auxiliary Colors and the Keys to the Eight Colors
 - 1.9.5. Categories of the Four Basic Colors
 - 1.9.6. Auxiliary Colors
- 1.10. T.A.T. Thematic Apperception Test
- 1.11. Psychometric Tests in Expertise
- 1.12. Wechsler Intelligence Test
 - 1.12.1. WISC– IV
 - 1.12.2. Test Description
- 1.13. Neuropsychological Maturity Questionnaire CUMANES
 - 1.13.1. Forensic Neuropsychology
 - 1.13.2. The Revised Barcelona Test
- 1.14. RAVEN's Progressive Matrices
 - 1.14.1. Domino Test or D-48
 - 1.14.2. Kaufman Assessment Battery for Children (K-ABC)
- 1.15. GOODENOUGH's Test
- 1.16. The Personality Test
- 1.17. Millon's Clinical Multiaxial Inventory (MCMIII-III)
- 1.18. CATELL's 16 PF-5
 - 1.18.1. First Order Factors
 - 1.18.2. Second Order Factors
 - 1.18.3. Profile Interpretation Steps
- 1.19. PAI and Behavioral Assessment System for Children and Adolescents
 - 1.19.1. Scales in Questionnaires for Parents and Guardians
 - 1.19.2. Self-Report Scales
 - 1.19.3. Personality Assessment Inventory PAI
- 1.20. Children's Personality Questionnaire CPQ
 - 1.20.1. Reserved / Open, Low / High Intelligence, Emotionally Affected / Stable, Calm / Excitable, Submissive / Dominant, Restrained / Enthusiastic, Carefree / Conscientious, Self-conscious / Enterprising, Tough / Sensitive, Confident / Doubtful, Simple / Astute, Serene / Apprehensive, Less or More Integrated and Relaxed / Tense
- 1.21. Clinical Analysis Questionnaire– CAQ
- 1.22. STAIC and STAI Anxiety Questionnaires and TAMAI Self-Assessment Test
 - 1.22.1. Trait-State Anxiety Questionnaire in Children - STAIC and in Adults - STAI
 - 1.22.2. Multifactor Self-Assessment Test of Child Adjustment - TAMAI
- 1.23. Questionnaire for the Evaluation of Adopters, Caregivers, Guardians and Mediators– CUIDA
 - 1.23.1. Primary Scales
 - 1.23.2. Response Styles
- 1.24. Short Symptom Checklist - SCL-90 R
 - 1.24.1. Dimensions
 - 1.24.2. Levels
- 1.25. Study of the Story's Credibility
 - 1.25.1. System for Analyzing the Validity of Statements: The SVA Method
 - 1.25.2. SVA = Interview + CBCA + Validity Checklist

05

Methodology

This academic program offers students a different way of learning. Our methodology uses a cyclical learning approach: **Relearning.**

This teaching system is used, for example, in the most prestigious medical schools in the world, and major publications such as the **New England Journal of Medicine** have considered it to be one of the most effective.



“

Discover Relearning, a system that abandons conventional linear learning, to take you through cyclical teaching systems: a way of learning that has proven to be extremely effective, especially in subjects that require memorization"

At TECH we use the Case Method

What should a professional do in a given situation? Throughout the program, students will face multiple simulated clinical cases, based on real patients, in which they will have to do research, establish hypotheses, and ultimately resolve the situation. There is an abundance of scientific evidence on the effectiveness of the method. Specialists learn better, faster, and more sustainably over time.

With TECH the psychologist experiences a way of learning that is shaking the foundations of traditional universities around the world.



According to Dr. Gérvas, the clinical case is the annotated presentation of a patient, or group of patients, which becomes a "case", an example or model that illustrates some peculiar clinical component, either because of its teaching power or because of its uniqueness or rarity. It is essential that the case is based on current professional life, trying to recreate the real conditions in the psychologist's professional practice.

“

Did you know that this method was developed in 1912, at Harvard, for law students? The case method consisted of presenting students with real-life, complex situations for them to make decisions and justify their decisions on how to solve them. In 1924, Harvard adopted it as a standard teaching method”

The effectiveness of the method is justified by four fundamental achievements:

1. Psychologists who follow this method not only master the assimilation of concepts, but also develop their mental capacity by means of exercises to evaluate real situations and apply their knowledge.
2. Learning is solidly translated into practical skills that allow the psychologist to better integrate knowledge into clinical practice.
3. Ideas and concepts are understood more efficiently, given that the example situations are based on real-life.
4. Students like to feel that the effort they put into their studies is worthwhile. This then translates into a greater interest in learning and more time dedicated to working on the course.



Relearning Methodology

At TECH we enhance the case method with the best 100% online teaching methodology available: Relearning.

Our university is the first in the world to combine the study of clinical cases with a 100% online learning system based on repetition, combining a minimum of 8 different elements in each lesson, which is a real revolution compared to the simple study and analysis of cases.

The psychologist will learn through real cases and by solving complex situations in simulated learning environments. These simulations are developed using state-of-the-art software to facilitate immersive learning.



At the forefront of world teaching, the Relearning method has managed to improve the overall satisfaction levels of professionals who complete their studies, with respect to the quality indicators of the best online university (Columbia University).

This methodology has trained more than 150,000 psychologists with unprecedented success in all clinical specialties. Our pedagogical methodology is developed in a highly competitive environment, with a university student body with a strong socioeconomic profile and an average age of 43.5 years old.

Relearning will allow you to learn with less effort and better performance, involving you more in your training, developing a critical mindset, defending arguments, and contrasting opinions: a direct equation for success.

In our program, learning is not a linear process, but rather a spiral (learn, unlearn, forget, and re-learn). Therefore, we combine each of these elements concentrically.

The overall score obtained by our learning system is 8.01, according to the highest international standards.



This program offers the best educational material, prepared with professionals in mind:



Study Material

All teaching material is produced by the specialists who teach the course, specifically for the course, so that the teaching content is highly specific and precise.

These contents are then applied to the audiovisual format, to create the TECH online working method. All this, with the latest techniques that offer high quality pieces in each and every one of the materials that are made available to the student.



Latest Techniques and Procedures on Video

TECH introduces students to the latest techniques, to the latest educational advances, to the forefront of current psychology. All of this in direct contact with students and explained in detail so as to aid their assimilation and understanding. And best of all, you can watch the videos as many times as you like.



Interactive Summaries

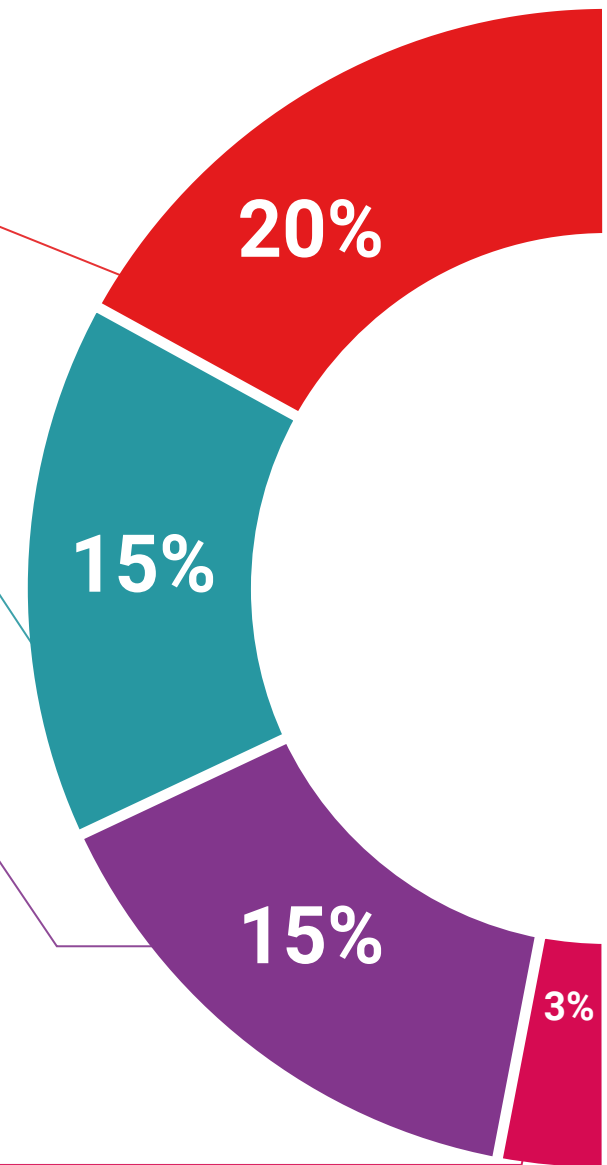
The TECH team presents the contents attractively and dynamically in multimedia lessons that include audio, videos, images, diagrams, and concept maps in order to reinforce knowledge.

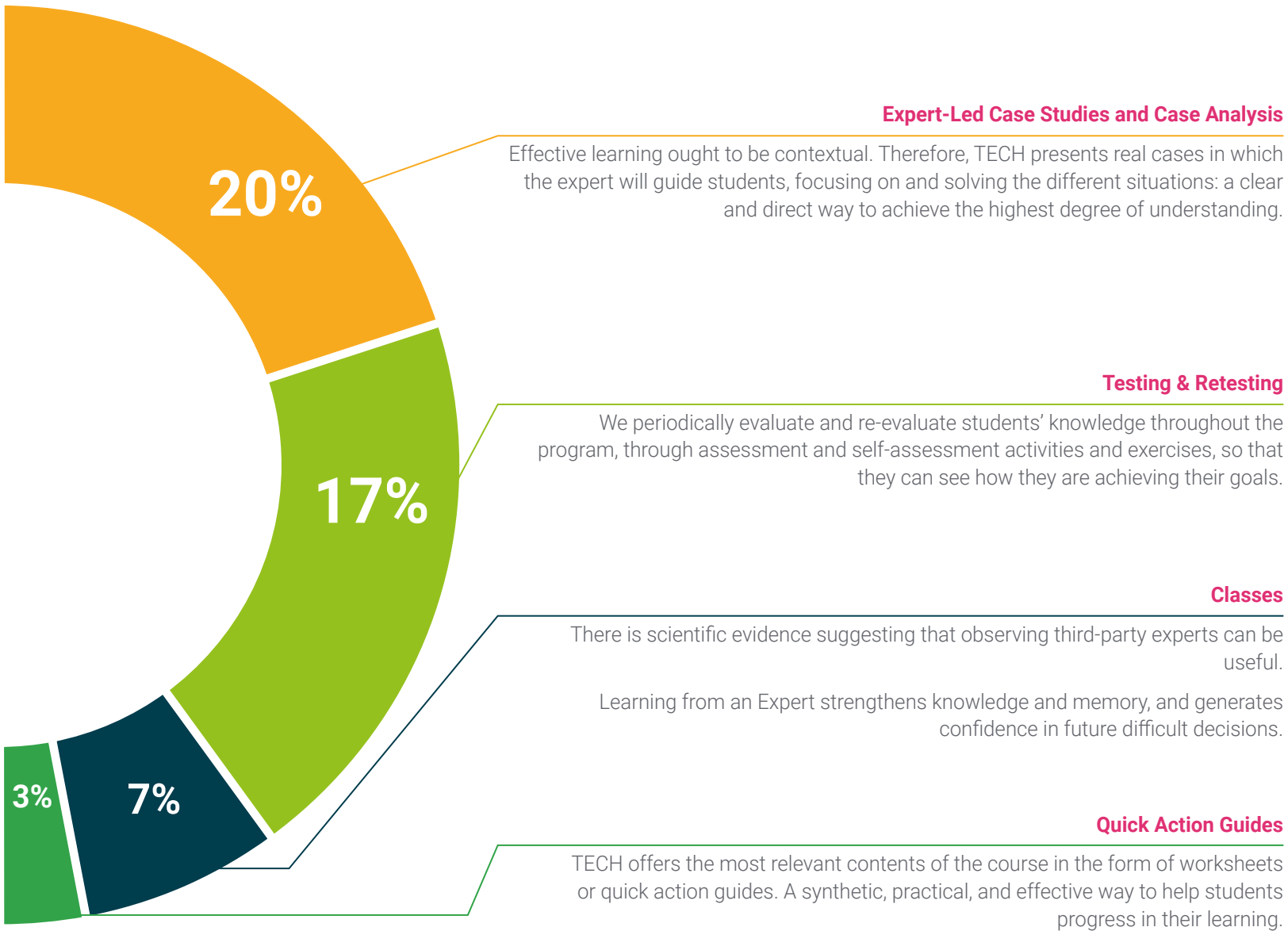
This exclusive educational system for presenting multimedia content was awarded by Microsoft as a "European Success Story".



Additional Reading

Recent articles, consensus documents and international guidelines, among others. In TECH's virtual library, students will have access to everything they need to complete their course.





06

Certificate

This Postgraduate Diploma in Assessment in Expert Psychodiagnosis guarantees you, in addition to the most rigorous and up-to-date training, access to a Postgraduate Diploma issued by TECH Technological University.



The image features two black graduation caps (mortarboards) against a blue sky with light clouds. The caps are positioned diagonally, with one in the foreground and another slightly behind it. The background is split into a blue sky on the left and a white and pink geometric shape on the right. The pink shape is a large triangle pointing towards the bottom right corner.

“

*Successfully complete this program
and receive your university degree
without travel or laborious paperwork”*

This **Postgraduate Diploma in Assessment in Expert Psychodiagnosis** contains the most complete and up-to-date program on the market.

After the student has passed the assessments, they will receive their corresponding **Postgraduate Diploma** issued by **TECH Technological University** via tracked delivery*.

The diploma issued by **TECH Technological University** will reflect the qualification obtained in the Postgraduate Diploma, and meets the requirements commonly demanded by labor exchanges, competitive examinations, and professional career evaluation committees.

Title: **Postgraduate Diploma in Assessment in Expert Psychodiagnostics**

Official N° of hours: **400 h.**



*Apostille Convention. In the event that the student wishes to have their paper diploma issued with an apostille, TECH EDUCATION will make the necessary arrangements to obtain it, at an additional cost.

future
health confidence people
education information tutors
guarantee accreditation teaching
institutions technology learning
community commitment
personalized service innovation
knowledge present
development language
virtual classroom



Postgraduate Diploma Assessment in Expert Psychodiagnosis

- » Modality: **online**
- » Duration: **6 months**
- » Certificate: **TECH Technological University**
- » Dedication: **16h/week**
- » Schedule: **at your own pace**
- » Exams: **online**

Postgraduate Diploma

Assessment in Expert Psychodiagnosis