

Postgraduate Certificate

Multiple Intelligences, Creativity,
Talent and High-Capacity Individuals



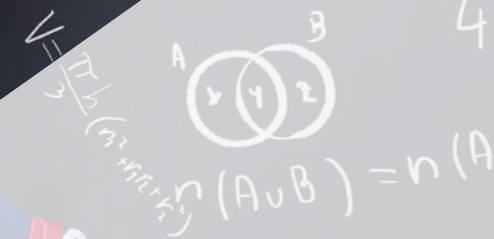
$$\frac{(20+2)}{4} = 5.5$$

$$\pi(x) = \sum \frac{\mu(n)}{n} \pi$$
$$= \pi(x) - \frac{1}{2} \pi$$

$$r = \frac{1}{2} \frac{1}{v_1}$$

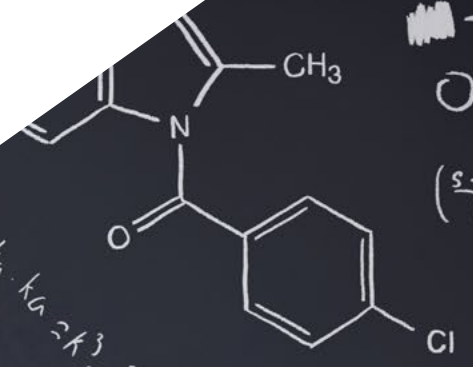
$$4 \cdot 6 - 3 = 4$$

$$-\frac{1}{5} \pi(x^2)$$



$$V = 0 \times 0 \times 0 = 0^3$$
$$V = 6 \times 6 \times 6 = 216$$
$$V = 216 \text{ cm}^3$$
$$S = 6 \times 6^2$$
$$S = 6 \times 6^2$$
$$S = 6 \times 36 = 216 \text{ cm}^2$$

$$ka \cdot ka \cdot ka = k^3 \cdot a^3$$





Postgraduate Certificate

Multiple Intelligences, Creativity, Talent and High-Capacity Individuals

- » Modality: **online**
- » Duration: **6 weeks**
- » Certificate: **TECH Technological University**
- » Dedication: **16h/week**
- » Schedule: **at your own pace**
- » Exams: **online**

Website: www.techtute.com/us/psychology/postgraduate-certificate/multiple-intelligences-creativity-talent-high-capacity-individuals

Index

01

Introduction

p. 4

02

Objectives

p. 8

03

Course Management

p. 12

04

Structure and Content

p. 16

05

Methodology

p. 22

06

Certificate

p. 30

01

Introduction

Turning a neuropsychological intervention into a path of progress is the goal of every neurologist. To help you achieve this, we have created this complete program in multiple intelligences, creativity, talent and high-capacity individuals with which you will be able to acquire new diagnostic and approach tools. One more step towards excellence.



“

The study of multiple intelligences and how to enhance them in the school environment, in this complete Postgraduate Certificate"

The work in neuropsychology is complex. It covers a broad spectrum of intervention that requires the professional to have very specific training in the various branches of brain development. This discipline, deeply linked to neurology and the physiological study of the brain, is affected by the changes that the evolution of knowledge in this scientific branch achieves. For professionals, this means an intense challenge of continuous updating that allows them to be at the forefront in terms of approach, intervention and monitoring of the cases that may arise in their practice.

Throughout this program, the student will review all the current approaches to the work practiced by neuropsychologists with regard to the different challenges posed by their profession.

The functioning of memory, language, the relationship between laterality and cognitive development, sensoriality and many other aspects, will be the topics of work and study that the student will be able to integrate in their training. A high-level step that will become a process of improvement, not only on a professional level, but also on a personal level.

This challenge is one of TECH's social commitments: to help highly qualified professionals to specialize and develop their personal, social and work skills during the course of their training.

We will not only take you through the theoretical knowledge we offer, but we will introduce you to another way of studying and learning, one which is simpler, more organic and more efficient. We will work to keep you motivated and to create in you a passion for learning. And we will push you to think and develop critical thinking.

This **Postgraduate Certificate in Multiple Intelligences, Creativity, Talent and High-Capacity Individuals** contains the most complete and up-to-date program on the market. The most important features include:

- ◆ The latest technology in online teaching software
- ◆ A highly visual teaching system, supported by graphic and schematic contents that are easy to assimilate and understand
- ◆ Practical cases presented by practicing experts
- ◆ State-of-the-art interactive video systems
- ◆ Teaching supported by telepractice
- ◆ Continuous updating and recycling systems
- ◆ Autonomous learning: full compatibility with other occupations
- ◆ Practical exercises for self-evaluation and learning verification
- ◆ Support groups and educational synergies: questions to the expert, debate and knowledge forums
- ◆ Communication with the teacher and individual reflection work
- ◆ Content that is accessible from any fixed or portable device with an Internet connection
- ◆ Complementary documentation banks permanently available, even after the course



A program created for professionals who aspire for excellence, and that will enable you to acquire new skills and strategies easily and effectively"

“

Recognizing and knowing how to work with multiple intelligences is one of the objectives of this Postgraduate Certificate. Our goal is to create highly qualified professionals”

Our teaching staff is made up of working professionals. In this way we ensure that we deliver the educational update we are aiming for. A multidisciplinary team of physicians trained and experienced in different environments, who will cover the theoretical knowledge in an efficient way, but, above all, will bring the practical knowledge derived from their own experience to the Postgraduate Certificate: one of the differential qualities of this program.

This mastery of the subject is complemented by the effectiveness of the methodological design of this Postgraduate Certificate. Developed by a multidisciplinary team of e-learning experts, it integrates the latest advances in educational technology. In this way, you will be able to study with a range of comfortable and versatile multimedia tools that will give you the operability you need in your training.

The design of this program is based on Problem-Based Learning: an approach that conceives learning as a highly practical process. To achieve this remotely, we will use telepractice learning: with the help of an innovative interactive video system, and *learning from an expert*, you will be able to acquire the knowledge as if you were actually dealing with the scenario you are learning about. A concept that will allow you to integrate and fix learning in a more realistic and permanent way.

An effective and proactive way to offer students new ways to improve and progress.

Creativity and talent as the basis for the neuropsychologist's work.



02

Objectives

The objective is to train highly qualified professionals for work experience. An objective that is complemented, moreover, in a global manner, by promoting human development that lays the foundations for a better society. This objective is focused on helping professionals reach a much higher level of expertise and control. A goal that, in just 6 weeks, you will be able to achieve through a highly intense and precise Postgraduate Certificate.





Space

“

If your goal is to improve in your profession, to acquire a qualification that will enable you to compete among the best, look no further: welcome to TECH”



General Objectives

- ◆ Qualify professionals for the practice of neuropsychology in education in the development of children and young people
- ◆ Learn how to carry out specific programs to improve school performance
- ◆ Access the forms and processes of research in neuropsychology in the school environment
- ◆ Increase the capacity for work and autonomous resolution of learning processes
- ◆ Study the attention to diversity from the neuropsychological approach
- ◆ Learn about the different ways to implement enrichment systems for learning methodologies in the classroom, especially aimed at diverse students
- ◆ Analyze and integrate the knowledge necessary to foster student's school and social development





Specific Objectives

- ◆ Apply new strategies in cases of high abilities.
- ◆ Be able to program while taking into account multiple intelligences and fostering talent and creativity

“

Make the most of this opportunity and take the step to get up to date on the latest developments in Multiple Intelligences, Creativity, Talent and High-Capacity Individuals”

03

Course Management

For our Postgraduate Certificate to be of the highest quality, we are proud to work with a teaching staff of the highest level, chosen for their proven track record in the field of education. Professionals from different areas and fields of expertise that make up a complete, multidisciplinary team. A unique opportunity to learn from the best.





“

Our professors are professionals with vast experience, and they bring their experience and teaching skills to offer you a stimulating and creative training program”

Management



Ms. Nuria Ester Sánchez Padrón

- ♦ Degree in Psychology from the University of La Laguna
- ♦ Master's Degree in General Health Psychology from the University of La Rioja
- ♦ Training in Emergency Psychological Care
- ♦ Training in Psychological Care in Penitentiary Institutions
- ♦ Teaching and training experience
- ♦ Experience in educational attention to children at risk



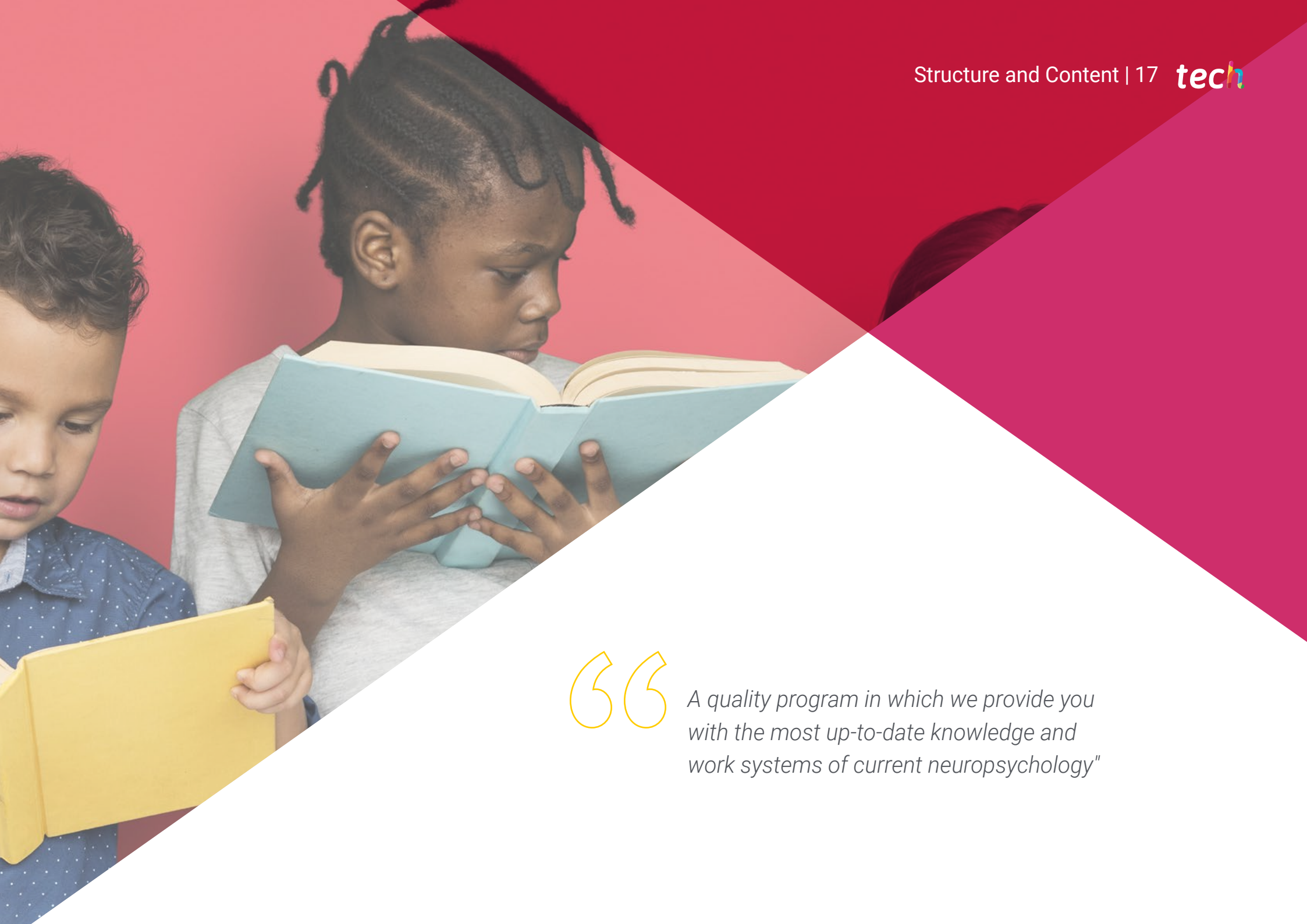
04

Structure and Content

The contents of this program have been developed by the different teachers of this Postgraduate Certificate, with a clear purpose: to ensure that our students acquire each and every one of the skills necessary to become true experts in this field.

The content of this Postgraduate Certificate enables you to learn all aspects of the different disciplines involved in this field: A complete and well-structured program that will take you to the highest standards of quality and success.





“

A quality program in which we provide you with the most up-to-date knowledge and work systems of current neuropsychology”

Module 1. Multiple Intelligences, Creativity, Talent and High-Capacity Individuals

- 1.1. Theory of Multiple Intelligences
 - 1.1.1. Introduction
 - 1.1.2. Medical History
 - 1.1.3. Conceptualization
 - 1.1.4. Validation
 - 1.1.5. Premises and Basic Principles of Theories
 - 1.1.6. Neuropsychological and Cognitive Science
 - 1.1.7. Classification of the Theories of Multiple Intelligences
 - 1.1.8. Summary
 - 1.1.9. Bibliographical References
- 1.2. Types of Multiple Intelligences
 - 1.2.1. Introduction
 - 1.2.2. Types of Intelligence
 - 1.2.3. Summary
 - 1.2.4. Bibliographical References
- 1.3. Assessment of Multiple Intelligences
 - 1.3.1. Introduction
 - 1.3.2. Medical history
 - 1.3.3. Types of Assessments
 - 1.3.4. Aspects to Consider in the Assessment
 - 1.3.5. Summary
 - 1.3.6. Bibliographical References
- 1.4. Creativity
 - 1.4.1. Introduction
 - 1.4.2. Concepts and Theories of Creativity
 - 1.4.3. Approaches to the Study of Creativity
 - 1.4.4. Characteristics of Creative Thinking
 - 1.4.5. Types of Creativity
 - 1.4.6. Summary
 - 1.4.7. Bibliographical References





- 1.5. Neuropsychological Basis of Creativity
 - 1.5.1. Introduction
 - 1.5.2. Medical History
 - 1.5.3. Characteristics of Creative People
 - 1.5.4. Creative Products
 - 1.5.5. Neuropsychological Bases of Creativity
 - 1.5.6. Influence of the Environment and Context on Creativity
 - 1.5.7. Summary
 - 1.5.8. Bibliographical References
- 1.6. Creativity in the Educational Context
 - 1.6.1. Introduction
 - 1.6.2. Creativity in the Classroom
 - 1.6.3. Stages of the Creative Process
 - 1.6.4. How to Work on Creativity?
 - 1.6.5. Connection Between Creativity and Thinking
 - 1.6.6. Modification in the Educational Context
 - 1.6.7. Summary
 - 1.6.8. Bibliographical References
- 1.7. Methodologies for Developing Creativity
 - 1.7.1. Introduction
 - 1.7.2. Programs for Developing Creativity
 - 1.7.3. Projects for Developing Creativity
 - 1.7.4. Promoting Creativity in the Family Context
 - 1.7.5. Summary
 - 1.7.6. Bibliographical References
- 1.8. Creativity Assessment and Guidance
 - 1.8.1. Introduction
 - 1.8.2. Considerations on Assessment
 - 1.8.3. Evaluation Tests
 - 1.8.4. Subjective Assessment Tests
 - 1.8.5. Guidance on Assessment
 - 1.8.6. Summary
 - 1.8.7. Bibliographical References

- 1.9. High Capacities and Talents
 - 1.9.1. Introduction
 - 1.9.2. Relationship Between Giftedness and High Capacities
 - 1.9.3. Connection Between Heredity and Environment
 - 1.9.4. Neuropsychological Foundation
 - 1.9.5. Models of Giftedness
 - 1.9.6. Summary
 - 1.9.7. Bibliographical References
- 1.10. Identification and Diagnosis of High Capacities
 - 1.10.1. Introduction
 - 1.10.2. Main Characteristics
 - 1.10.3. How to Identify High Capacities?
 - 1.10.4. Role of the Agents Involved
 - 1.10.5. Assessment Tests and Instruments
 - 1.10.6. Intervention Programs
 - 1.10.7. Summary
 - 1.10.8. Bibliographical References
- 1.11. Problems and Difficulties
 - 1.11.1. Introduction
 - 1.11.2. Problems and Difficulties in the School Environment
 - 1.11.3. Myths and Beliefs
 - 1.11.4. Dyssynchronies
 - 1.11.5. Differential Diagnosis
 - 1.11.6. Differences Between Genders
 - 1.11.7. Educational Needs
 - 1.11.8. Summary
 - 1.11.9. Bibliographical References
- 1.12. Connection Between Multiple Intelligences, High Capacities, Talent and Creativity
 - 1.12.1. Introduction
 - 1.12.2. Connection Between Multiple Intelligences and Creativity
 - 1.12.3. Connection Between Multiple Intelligences, High Capacities and Talents
 - 1.12.4. Differences Between Talent and High Capacities
 - 1.12.5. Creativity, High Capacities and Talent



- 1.12.6. Summary
- 1.12.7. Bibliographical References
- 1.13. Guiding and Developing Multiple Intelligences
 - 1.13.1. Introduction
 - 1.13.2. Advising Teachers
 - 1.13.3. Multidimensional Student Development
 - 1.13.4. Curricular Enrichment
 - 1.13.5. Strategies at Different Educational Levels
 - 1.13.6. Summary
 - 1.13.7. Bibliographical References
- 1.14. Creativity for Problem Solving
 - 1.14.1. Introduction
 - 1.14.2. Models of the Creative Process for Problem Solving
 - 1.14.3. Creative Project Development
 - 1.14.4. Summary
 - 1.14.5. Bibliographical References
- 1.15. Educational Process and Family Support
 - 1.15.1. Introduction
 - 1.15.2. Guidelines for Teachers
 - 1.15.3. Educational Response in Children
 - 1.15.4. Educational Response in Primary Education
 - 1.15.5. Educational Response in Secondary Education
 - 1.15.6. Coordination with Families
 - 1.15.7. Program Implementation
 - 1.15.8. Summary
 - 1.15.9. Bibliographical References



A complete program that will take you through the knowledge you need to compete among the best”

05

Methodology

This academic program offers students a different way of learning. Our methodology uses a cyclical learning approach: **Relearning**.

This teaching system is used, for example, in the most prestigious medical schools in the world, and major publications such as the **New England Journal of Medicine** have considered it to be one of the most effective.



“

Discover Relearning, a system that abandons conventional linear learning, to take you through cyclical teaching systems: a way of learning that has proven to be extremely effective, especially in subjects that require memorization"

At TECH we use the Case Method

What should a professional do in a given situation? Throughout the program, students will face multiple simulated clinical cases, based on real patients, in which they will have to do research, establish hypotheses, and ultimately resolve the situation. There is an abundance of scientific evidence on the effectiveness of the method. Specialists learn better, faster, and more sustainably over time.

With TECH the psychologist experiences a way of learning that is shaking the foundations of traditional universities around the world.



According to Dr. Gérvas, the clinical case is the annotated presentation of a patient, or group of patients, which becomes a "case", an example or model that illustrates some peculiar clinical component, either because of its teaching power or because of its uniqueness or rarity. It is essential that the case is based on current professional life, trying to recreate the real conditions in the psychologist's professional practice.

“

Did you know that this method was developed in 1912, at Harvard, for law students? The case method consisted of presenting students with real-life, complex situations for them to make decisions and justify their decisions on how to solve them. In 1924, Harvard adopted it as a standard teaching method”

The effectiveness of the method is justified by four fundamental achievements:

1. Psychologists who follow this method not only master the assimilation of concepts, but also develop their mental capacity by means of exercises to evaluate real situations and apply their knowledge.
2. Learning is solidly translated into practical skills that allow the psychologist to better integrate knowledge into clinical practice.
3. Ideas and concepts are understood more efficiently, given that the example situations are based on real-life.
4. Students like to feel that the effort they put into their studies is worthwhile. This then translates into a greater interest in learning and more time dedicated to working on the course.



Relearning Methodology

At TECH we enhance the case method with the best 100% online teaching methodology available: Relearning.

Our university is the first in the world to combine the study of clinical cases with a 100% online learning system based on repetition, combining a minimum of 8 different elements in each lesson, which is a real revolution compared to the simple study and analysis of cases.

The psychologist will learn through real cases and by solving complex situations in simulated learning environments. These simulations are developed using state-of-the-art software to facilitate immersive learning.



At the forefront of world teaching, the Relearning method has managed to improve the overall satisfaction levels of professionals who complete their studies, with respect to the quality indicators of the best online university (Columbia University).

This methodology has trained more than 150,000 psychologists with unprecedented success in all clinical specialties. Our pedagogical methodology is developed in a highly competitive environment, with a university student body with a strong socioeconomic profile and an average age of 43.5 years old.

Relearning will allow you to learn with less effort and better performance, involving you more in your training, developing a critical mindset, defending arguments, and contrasting opinions: a direct equation for success.

In our program, learning is not a linear process, but rather a spiral (learn, unlearn, forget, and re-learn). Therefore, we combine each of these elements concentrically.

The overall score obtained by our learning system is 8.01, according to the highest international standards.



This program offers the best educational material, prepared with professionals in mind:



Study Material

All teaching material is produced by the specialists who teach the course, specifically for the course, so that the teaching content is highly specific and precise.

These contents are then applied to the audiovisual format, to create the TECH online working method. All this, with the latest techniques that offer high quality pieces in each and every one of the materials that are made available to the student.



Latest Techniques and Procedures on Video

TECH introduces students to the latest techniques, to the latest educational advances, to the forefront of current psychology. All of this in direct contact with students and explained in detail so as to aid their assimilation and understanding. And best of all, you can watch the videos as many times as you like.



Interactive Summaries

The TECH team presents the contents attractively and dynamically in multimedia lessons that include audio, videos, images, diagrams, and concept maps in order to reinforce knowledge.

This exclusive educational system for presenting multimedia content was awarded by Microsoft as a "European Success Story".



Additional Reading

Recent articles, consensus documents and international guidelines, among others. In TECH's virtual library, students will have access to everything they need to complete their course.





Expert-Led Case Studies and Case Analysis

Effective learning ought to be contextual. Therefore, TECH presents real cases in which the expert will guide students, focusing on and solving the different situations: a clear and direct way to achieve the highest degree of understanding.



Testing & Retesting

We periodically evaluate and re-evaluate students' knowledge throughout the program, through assessment and self-assessment activities and exercises, so that they can see how they are achieving their goals.



Classes

There is scientific evidence suggesting that observing third-party experts can be useful.
Learning from an Expert strengthens knowledge and memory, and generates confidence in future difficult decisions.



Quick Action Guides

TECH offers the most relevant contents of the course in the form of worksheets or quick action guides. A synthetic, practical, and effective way to help students progress in their learning.



06

Certificate

The Postgraduate Certificate in Multiple Intelligences, Creativity, Talent and High-Capacity Individuals guarantees students, in addition to the most rigorous and up-to-date education, access to a Postgraduate Certificate issued by TECH Technological University.



“

Successfully complete this program and receive your university qualification without having to travel or fill out laborious paperwork”

This **Postgraduate Certificate in Multiple Intelligences, Creativity, Talent and High-Capacity Individuals** contains the most complete and up-to-date program on the market.

After the student has passed the assessments, they will receive their corresponding **Postgraduate Certificate** issued by **TECH Technological University** via tracked delivery*.

The diploma issued by **TECH Technological University** will reflect the qualification obtained in the Postgraduate Certificate, and meets the requirements commonly demanded by labor exchanges, competitive examinations and professional career evaluation committees.

Title: **Postgraduate Certificate in Multiple Intelligences, Creativity, Talent and High-Capacity Individuals**

Official N° of Hours: **150 h.**



*Apostille Convention. In the event that the student wishes to have their paper diploma issued with an apostille, TECH EDUCATION will make the necessary arrangements to obtain it, at an additional cost.

future
health confidence people
education information tutors
guarantee accreditation teaching
institutions technology learning
community commitment
personalized service innovation
knowledge present
development languages
virtual classroom



Postgraduate Certificate
Multiple Intelligences,
Creativity, Talent and
High-Capacity Individuals

- › Modality: online
- › Duration: 6 weeks
- › Certificate: TECH Technological University
- › Dedication: 16h/week
- › Schedule: at your own pace
- › Exams: online

Postgraduate Certificate

Multiple Intelligences, Creativity, Talent
and High-Capacity Individuals

