

# Postgraduate Certificate Emotional Intelligence in the Socio-Educational Context





## Postgraduate Certificate Emotional Intelligence in the Socio-Educational Context

- » Modality: online
- » Duration: 6 weeks
- » Certificate: TECH Technological University
- » Dedication: 16h/week
- » Schedule: at your own pace
- » Exams: online

Website: [www.techtitute.com/us/psychology/postgraduate-certificate/emotional-intelligence-socio-educational-context](http://www.techtitute.com/us/psychology/postgraduate-certificate/emotional-intelligence-socio-educational-context)

# Index

01

Introduction

---

*p. 4*

02

Objectives

---

*p. 8*

03

Structure and Content

---

*p. 12*

04

Methodology

---

*p. 16*

05

Certificate

---

*p. 24*

# 01

# Introduction

Emotional intelligence is the ability to understand and manage emotions. And, precisely, this program is aimed at that, to understand emotional intelligence from the point of view of psychological research, following the explanatory models or the main assessment instruments. Take advantage of the opportunity and become a researcher with solid and secure foundations through this academic program and the latest educational technology 100% online.



“

*The Postgraduate Certificate in Emotional Intelligence in the Socio-Educational Context program will help you update your knowledge in research and specialize you as a practicing professional"*

The Postgraduate Certificate in Emotional Intelligence in the Socio-Educational Context has been created with the aim of understanding that the development and improvement of research in the area of Psychology involves focusing not only on the content to be developed, but also on the different methodologies and techniques used to achieve the objectives set more efficiently. It aims to respond to the whole context that surrounds both the research itself and the field of knowledge in which the research is framed.

Learn about the bases of emotional intelligence, its explanatory models, assessment tools or emotional intelligence in different stages of life and socio-educational contexts. Enhance your skills thanks to this program that will allow you to perform at the highest level in research in the area of Psychology.

Through this program, you will be able to incorporate the competencies associated with the researcher in Psychology through a broad, objective and experiential description of the elements to be applied during their practice. From the most general to the most specific and transversal, analyzing all the stages that make up an investigation. Research is a fundamental section in any area, since all the existing theoretical content is based on it.

This **Postgraduate Certificate in Emotional Intelligence in the Socio-Educational Context** contains the most complete and up-to-date program on the market. Its most notable features are:

- ♦ The development of case studies presented by experts in Psychology and Scientific Research
- ♦ The graphic, schematic, and practical contents with which they are created provide scientific and practical information on the disciplines that are essential for carrying out research
- ♦ New developments and innovations in the research of the different fields of Psychology
- ♦ Practical exercises where the self-assessment process can be carried out to improve learning
- ♦ Algorithm-based interactive learning system for decision-making in the situations that are presented to the student
- ♦ Special emphasis on research methodologies
- ♦ Theoretical lessons, questions to the expert, debate forums on controversial topics, and individual reflection assignments
- ♦ Content that is accessible from any fixed or portable device with an Internet connection



*Access the latest methodologies in Applied Psychology, master the writing of articles or deepen your knowledge in data analysis. Become a research professional in Psychology"*



“

*This Postgraduate Certificate aims to provide a methodological renewal taking into account the demands of current research and offering the most innovative strategies and tools"*

It includes a very broad teaching staff of professionals belonging to the field of psychology, who bring to this training the experience of their work, in addition to recognized specialists from leading societies and prestigious universities.

The multimedia content, developed with the latest educational technology, will provide the professional with situated and contextual learning, i.e., a simulated environment that will provide an immersive learning experience designed to prepare for real-life situations.

This program is designed around Problem-Based Learning, where the student must try to solve the different professional practice situations that arise during the course. For this purpose, the professional will be assisted by an innovative interactive video system created by renowned and experienced research experts.

*Increase your confidence as a psychology researcher by updating your knowledge through this Postgraduate Certificate.*

*This Postgraduate Certificate marks the difference between a professional with a lot of knowledge and a professional who knows how to apply it in the processes of research and scientific publication.*



# 02

# Objectives

This Postgraduate Certificate is oriented to researchers in the field of Psychology, so that they can acquire the necessary tools to develop in the specific area, knowing the latest trends and delving into those issues that make up the forefront of this area of knowledge. Researchers will only be able to carry out their objectives successfully if they are adequately prepared.







“

*The Postgraduate Certificate in Emotional Intelligence in the Socio-Educational Context will broaden your horizons as a psychologist and allow you to grow personally and professionally”*



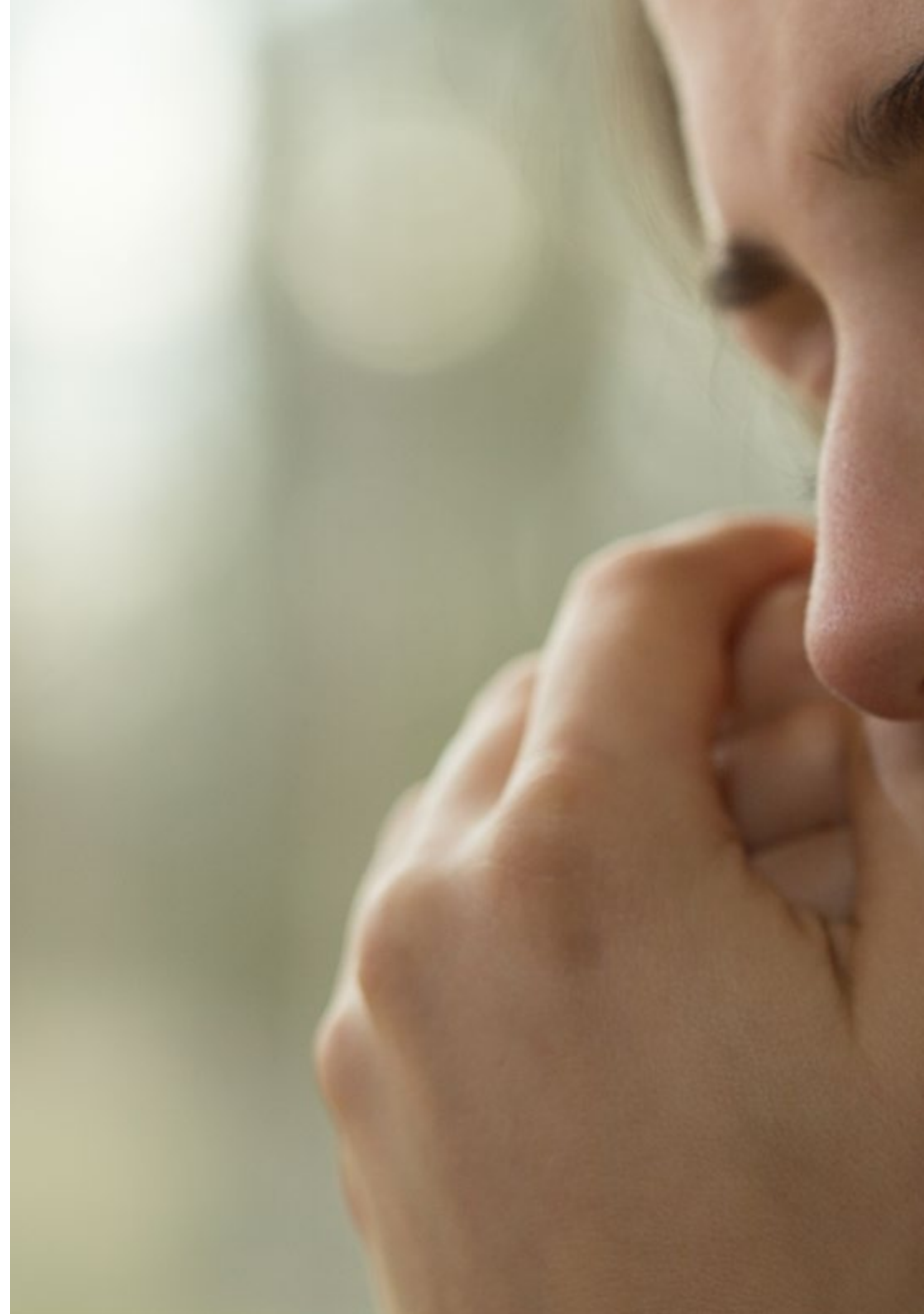
### General Objective

---

- Learn the necessary competences to develop a research activity, as psychologists, that will allow them to raise their methodological and performance level in the field of research in psychology, using the appropriate tools within the research context, which will allow them to grow personally and professionally



*Make the most of the opportunity and acquire the tools to enhance your research skills"*





## Specific Objectives

---

- ♦ Acquire specialized, up-to-date and scientific knowledge about emotional intelligence applied to the socio-educational field
- ♦ Critically discern the different theoretical models that support the term 'emotional intelligence', as well as the different factors that define it
- ♦ Be able to design and develop a research project on emotional intelligence under the principles of the scientific method
- ♦ Know the skills related to academic achievement and the tools to favor the development of a good emotional intelligence in the educational and family context



03

# Structure and Content

The structure of the contents has been designed by a team of professionals in Psychology research, aware of the relevance of current specialization in order to delve into the area of knowledge and make publications of academic quality.



“

*This Postgraduate Certificate in Emotional Intelligence in the Socio-Educational Context contains the most complete and up-to-date scientific program on the market"*

## Module 1. Emotional Intelligence

- 1.1. Emotional Intelligence. Concept and Structure
  - 1.1.1. Emotional Intelligence as a Cognitive Process
  - 1.1.2. Basic Concepts of Emotional Intelligence
  - 1.1.3. Structure of Emotional Intelligence
- 1.2. Explanatory Models of Emotional Intelligence
  - 1.2.1. Approaches to the Study of Emotional Intelligence
  - 1.2.2. Evidence in the Investigation of Emotional Intelligence
  - 1.2.3. Explanatory Models of Emotional Intelligence
- 1.3. Instruments for the Assessment of Emotional Intelligence
  - 1.3.1. Tests and Scales to Evaluate Emotional Intelligence
  - 1.3.2. Other Methods of Emotional Intelligence Assessment
  - 1.3.3. Advantages and Disadvantages of Different Measurements
- 1.4. Emotional Intelligence in Children and Adolescents
  - 1.4.1. Emotional Intelligence in Childhood
  - 1.4.2. Development of Emotional Intelligence during Childhood
  - 1.4.3. Emotional Intelligence as a Predictor Variable
- 1.5. Emotional Intelligence in Adults and the Elderly
  - 1.5.1. Emotional Intelligence in Adults
  - 1.5.2. Differences in Emotional Intelligence Between Adults and the Elderly
  - 1.5.3. Influence of Emotional Intelligence on Behavior
- 1.6. Emotional Intelligence in Socio-Educational Contexts
  - 1.6.1. Emotional Intelligence at School
  - 1.6.2. Emotional Intelligence in the Family Context
  - 1.6.3. Relationships Between Socio-Educational Contexts and their Influence on Emotional Intelligence
- 1.7. Relationships of Emotional Intelligence with Other Psychological Measures
  - 1.7.1. Relationships Between Emotional Intelligence and Other Psychological Constructs
  - 1.7.2. Influence of Emotional Intelligence on other Cognitive Processes





- 1.8. Emotional Intelligence and Psychopathology
  - 1.8.1. Individual Differences in Emotional Intelligence
  - 1.8.2. Emotional Intelligence as a Possible Source of Psychopathology
  - 1.8.3. Psychological Problems Related to Emotional Intelligence
- 1.9. Interventions for the Improvement of Emotional Intelligence in the Social Context
  - 1.9.1. Approaches to Emotional Intelligence Training in Social Contexts
  - 1.9.2. Evidence from Social Intervention on Emotional Intelligence
  - 1.9.3. Design and Planning of Interventions in the Social Context
- 1.10. Interventions for the Improvement of Emotional Intelligence in the Educational Context
  - 1.10.1. Approaches to the Training of Emotional Intelligence in Educational Contexts
  - 1.10.2. Evidence of Intervention in Educational Contexts on Emotional Intelligence
  - 1.10.3. Design and Planning of Interventions in the Educational Context
  - 1.10.4. Implementation and Follow-Up of Interventions
  - 1.10.5. Assessment of the Effectiveness of an Intervention

“

*Discover the importance of the professional's orientation towards research and the implications of effective accompaniment in this field”*

04

# Methodology

This academic program offers students a different way of learning. Our methodology uses a cyclical learning approach: **Relearning**.

This teaching system is used, for example, in the most prestigious medical schools in the world, and major publications such as the **New England Journal of Medicine** have considered it to be one of the most effective.



“

*Discover Relearning, a system that abandons conventional linear learning, to take you through cyclical teaching systems: a way of learning that has proven to be extremely effective, especially in subjects that require memorization”*



## At TECH we use the Case Method

What should a professional do in a given situation? Throughout the program, students will face multiple simulated clinical cases, based on real patients, in which they will have to do research, establish hypotheses, and ultimately resolve the situation. There is an abundance of scientific evidence on the effectiveness of the method. Specialists learn better, faster, and more sustainably over time.

*With TECH the psychologist experiences a way of learning that is shaking the foundations of traditional universities around the world.*



According to Dr. Gérvas, the clinical case is the annotated presentation of a patient, or group of patients, which becomes a "case", an example or model that illustrates some peculiar clinical component, either because of its teaching power or because of its uniqueness or rarity. It is essential that the case is based on current professional life, trying to recreate the real conditions in the psychologist's professional practice.

“

*Did you know that this method was developed in 1912, at Harvard, for law students? The case method consisted of presenting students with real-life, complex situations for them to make decisions and justify their decisions on how to solve them. In 1924, Harvard adopted it as a standard teaching method”*

The effectiveness of the method is justified by four fundamental achievements:

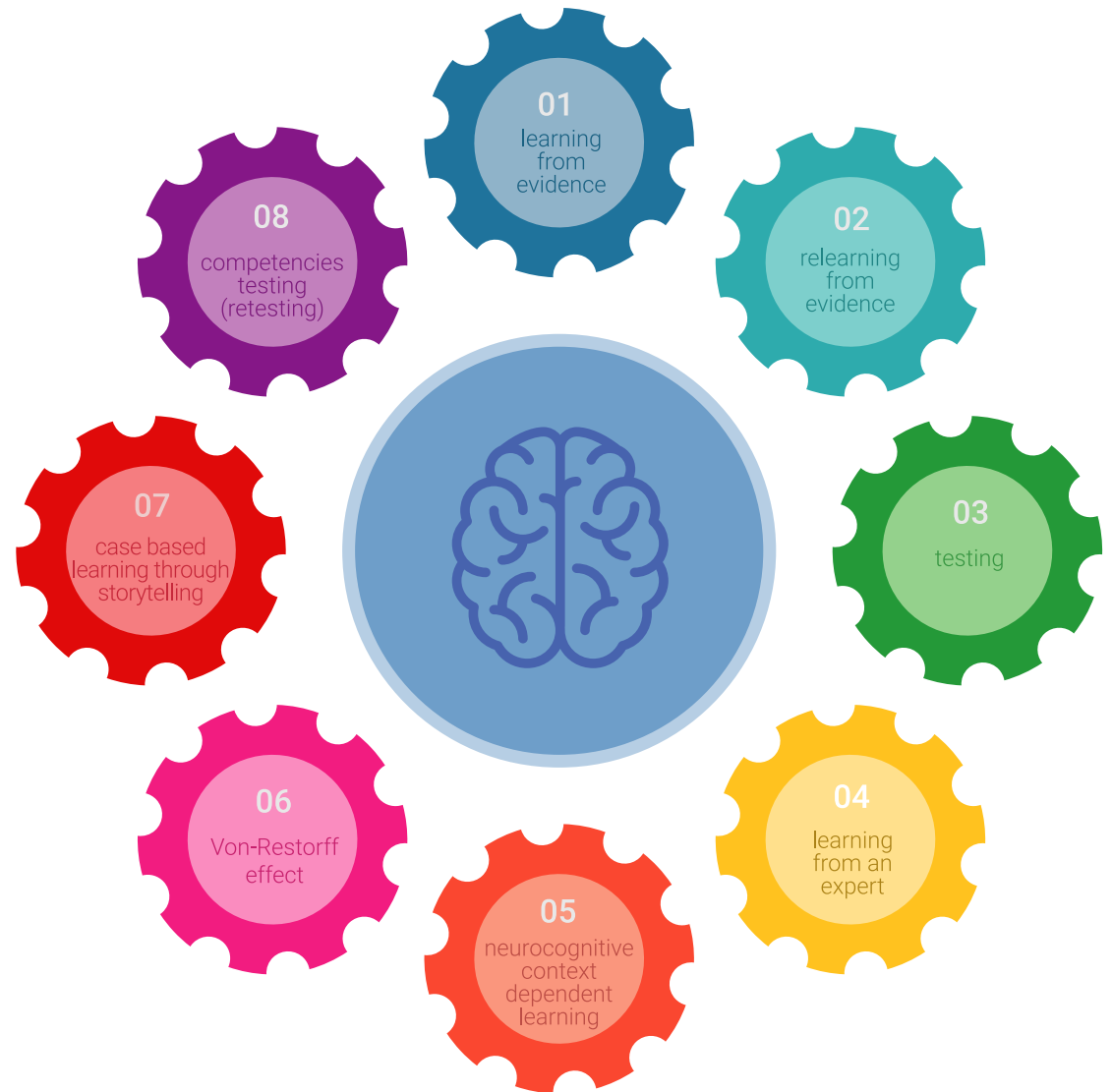
1. Psychologists who follow this method not only master the assimilation of concepts, but also develop their mental capacity by means of exercises to evaluate real situations and apply their knowledge.
2. Learning is solidly translated into practical skills that allow the psychologist to better integrate knowledge into clinical practice.
3. Ideas and concepts are understood more efficiently, given that the example situations are based on real-life.
4. Students like to feel that the effort they put into their studies is worthwhile. This then translates into a greater interest in learning and more time dedicated to working on the course.



## Relearning Methodology

At TECH we enhance the case method with the best 100% online teaching methodology available: Relearning.

Our university is the first in the world to combine the study of clinical cases with a 100% online learning system based on repetition, combining a minimum of 8 different elements in each lesson, which is a real revolution compared to the simple study and analysis of cases.



*The psychologist will learn through real cases and by solving complex situations in simulated learning environments.*

*These simulations are developed using state-of-the-art software to facilitate immersive learning.*



At the forefront of world teaching, the Relearning method has managed to improve the overall satisfaction levels of professionals who complete their studies, with respect to the quality indicators of the best online university (Columbia University).

This methodology has trained more than 150,000 psychologists with unprecedented success in all clinical specialties. Our pedagogical methodology is developed in a highly competitive environment, with a university student body with a strong socioeconomic profile and an average age of 43.5 years old.

*Relearning will allow you to learn with less effort and better performance, involving you more in your training, developing a critical mindset, defending arguments, and contrasting opinions: a direct equation for success.*

In our program, learning is not a linear process, but rather a spiral (learn, unlearn, forget, and re-learn). Therefore, we combine each of these elements concentrically.

The overall score obtained by our learning system is 8.01, according to the highest international standards.



This program offers the best educational material, prepared with professionals in mind:



#### Study Material

All teaching material is produced by the specialists who teach the course, specifically for the course, so that the teaching content is highly specific and precise.

These contents are then applied to the audiovisual format, to create the TECH online working method. All this, with the latest techniques that offer high quality pieces in each and every one of the materials that are made available to the student.



#### Latest Techniques and Procedures on Video

TECH introduces students to the latest techniques, to the latest educational advances, to the forefront of current psychology. All of this in direct contact with students and explained in detail so as to aid their assimilation and understanding. And best of all, you can watch the videos as many times as you like.



#### Interactive Summaries

The TECH team presents the contents attractively and dynamically in multimedia lessons that include audio, videos, images, diagrams, and concept maps in order to reinforce knowledge.

This exclusive educational system for presenting multimedia content was awarded by Microsoft as a "European Success Story".



#### Additional Reading

Recent articles, consensus documents and international guidelines, among others. In TECH's virtual library, students will have access to everything they need to complete their course.





**Expert-Led Case Studies and Case Analysis**

Effective learning ought to be contextual. Therefore, TECH presents real cases in which the expert will guide students, focusing on and solving the different situations: a clear and direct way to achieve the highest degree of understanding.



**Testing & Retesting**

We periodically evaluate and re-evaluate students' knowledge throughout the program, through assessment and self-assessment activities and exercises, so that they can see how they are achieving their goals.



**Classes**

There is scientific evidence suggesting that observing third-party experts can be useful.  
Learning from an Expert strengthens knowledge and memory, and generates confidence in future difficult decisions.



**Quick Action Guides**

TECH offers the most relevant contents of the course in the form of worksheets or quick action guides. A synthetic, practical, and effective way to help students progress in their learning.



# 05

# Certificate

The Postgraduate Certificate in Emotional Intelligence in the Socio-Educational Context guarantees students, in addition to the most rigorous and up-to-date education, access to a Postgraduate Certificate issued by TECH Technological University.





“

*Successfully complete this program and receive your university qualification without having to travel or fill out laborious paperwork”*

This **Postgraduate Certificate in Emotional Intelligence in the Socio-Educational Context** contains the most complete and up-to-date scientific program on the market.

After the student has passed the assessments, they will receive their corresponding **Postgraduate Certificate** issued by **TECH Technological University** via tracked delivery\*.

The diploma issued by **TECH Technological University** will reflect the qualification obtained in the Postgraduate Certificate, and meets the requirements commonly demanded by labor exchanges, competitive examinations and professional career evaluation committees.

Title: **Postgraduate Certificate in Emotional Intelligence in the Socio-Educational Context**

Official N° of hours: **150 h.**



\*Apostille Convention. In the event that the student wishes to have their diploma issued with an apostille, TECH EDUCATION will make the necessary arrangements to obtain it, at an additional cost.



future  
health confidence people  
education information tutors  
guarantee accreditation teaching  
institutions technology learning  
community commitment  
personalized service innovation  
knowledge present  
development languages  
virtual classroom



## Postgraduate Certificate Emotional Intelligence in the Socio-Educational Context

- » Modality: online
- » Duration: 6 weeks
- » Certificate: TECH Technological University
- » Dedication: 16h/week
- » Schedule: at your own pace
- » Exams: online

# Postgraduate Certificate

## Emotional Intelligence in the Socio-Educational Context

