

Postgraduate Certificate Early Intervention





Postgraduate Certificate Early Intervention

- » Modality: online
- » Duration: 6 weeks
- » Certificate: TECH Technological University
- » Dedication: 16h/week
- » Schedule: at your own pace
- » Exams: online

Website: www.techtute.com/us/psychology/postgraduate-certificate/early-intervention

Index

01

Introduction

p. 4

02

Objectives

p. 8

03

Course Management

p. 12

04

Structure and Content

p. 16

05

Methodology

p. 20

06

Certificate

p. 28

01

Introduction

Early intervention in psychology is crucial to prevent and treat mental health problems before they become chronic and serious. In addition, it can help people develop positive coping skills and strategies that will enable them to better manage stress and challenging situations in the future. For this reason, TECH has designed a degree that allows students to increase their knowledge to the maximum in aspects such as early intervention, the different agents involved and socio-affective development, among others. All this, thanks to a 100% online modality and with the most dynamic and practical multimedia materials available in the academic market.

“

Enroll now and acquire new skills on Early Intervention, quickly, and in a 100% online modality"



By intervening at an early stage, problems can be treated before they become more serious and require more intensive and costly care. In addition, people who receive early treatment may be less likely to need hospitalizations and other intensive treatments, reducing complications in medical care.

For this reason, TECH has designed a Diploma in Early Intervention with which it seeks to provide students with the necessary skills and competencies to be able to perform their work as specialists, with the highest possible efficiency and quality. Thus, throughout this program, aspects such as Social Risk Situations, Early Intervention Programs or the Preoperational Period will be addressed.

All this, through a convenient 100% online modality that allows students to organize their schedules and studies, combining them with their other day-to-day work and interests. In addition, this degree has the most complete theoretical and practical materials on the market, which facilitates the student's study process and allows them to achieve their objectives quickly and efficiently. This facilitates the student's study process and allows them to achieve their objectives quickly and efficiently.

This **Postgraduate Certificate in Early Intervention** contains the most complete and up-to-date program on the market. The most important features include:

- The development of case studies presented by experts in Early Intervention
- The graphic, schematic and eminently practical contents of the book provide sporting and practical information on those disciplines that are essential for professional practice
- Practical exercises where self-assessment can be used to improve learning
- Its special emphasis on innovative methodologies
- Theoretical lessons, questions to the expert, debate forums on controversial topics, and individual reflection assignments
- Content that is accessible from any fixed or portable device with an Internet connection

“*Become an expert in Brain Plasticity and Function in only 6 weeks and with total freedom of organization*”

“*Achieve professional success in one of the most promising areas of Psychology, thanks to TECH and the most innovative teaching materials*”

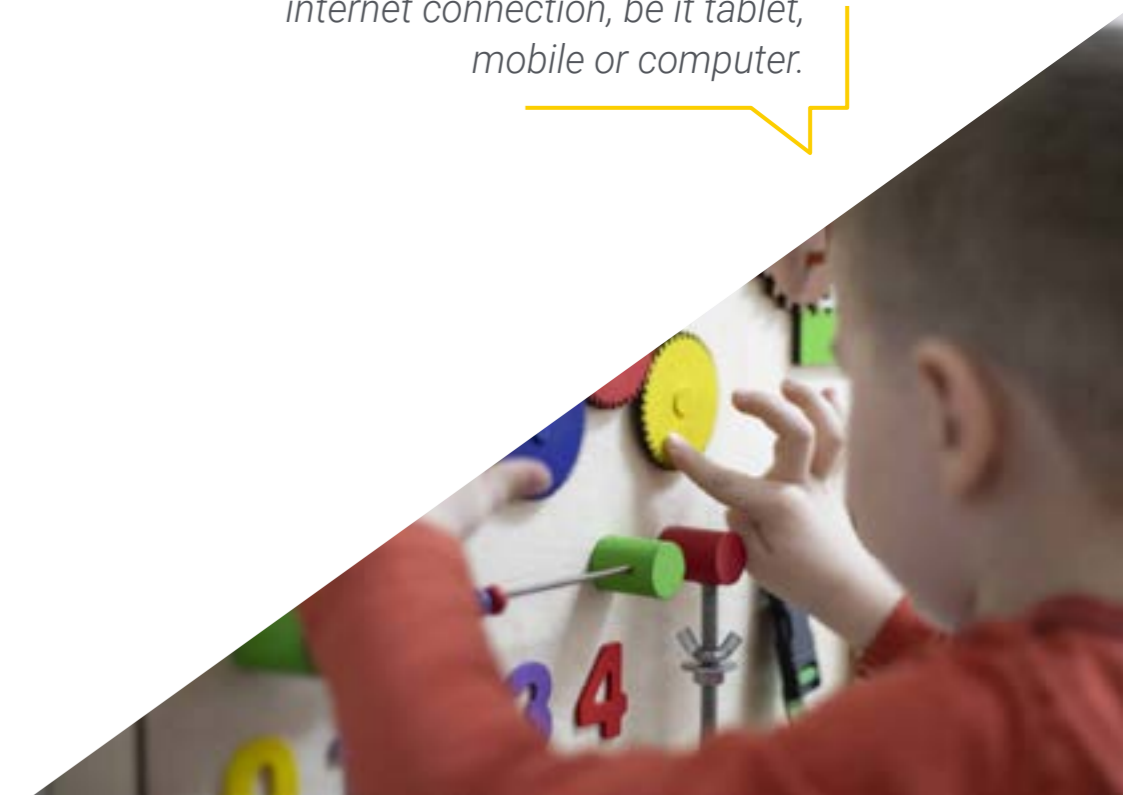
Delve into the essential aspects of Early Intervention, from the comfort of your home, 24 hours a day.

Take advantage of all the content on Approaches to Cognitive Development from any device with internet connection, be it tablet, mobile or computer.

The program's teaching staff includes professionals from the sector who contribute their work experience to this educational program, as well as renowned specialists from leading societies and prestigious universities.

Its multimedia content, developed with the latest educational technology, will provide the professional with situated and contextual learning, i.e., a simulated environment that will provide an immersive education programmed to learn in real situations.

The design of this program focuses on Problem-Based Learning, by means of which the professional must try to solve the different professional practice situations that are presented throughout the academic course. For this purpose, the student will be assisted by an innovative interactive video system created by renowned experts.



02 Objectives

The final objective of this Diploma in Early Intervention is that the student acquires a precise update of his/her knowledge in this area. An update that will allow the student to work with the highest possible quality and efficiency. All this, thanks to TECH and a 100% online modality that gives total freedom of organization and schedules to the student.

“

It addresses aspects such as Neurodevelopmental Development, from the tranquility of your home and without the need to travel of any kind"



General Objectives

- Acquire new competences and skills in the area of psycho-pedagogy
- Updating in the area of psycho-pedagogy in the school area
- Developing the ability to cope with new situations in the school context
- Encourage interest in the constant updating of professionals
- Know the different intervention options
- Learn new ways of dealing with Special Educational Needs
- Achieve an efficient framework for Evaluation, Diagnosis, and Guidance
- Be able to research and innovate in order to respond to new demands



Specific Objectives

- Support and Reinforce Childhood Care for people with Biological, Psychological, or Social Risks
- Master the basic concepts and tools that will allow early intervention, both to prevent and to face the biopsychosocial risks that affect childhood
- Gain knowledge of Cognitive, Linguistic, Socio-affective, and Socially at-risk Children's Development
- Recognize the different Intervention Models and Types of Programs, as well as their Evolution



Reach your most demanding goals thanks to a unique program with the most complete theoretical and practical materials in the academic market"

03

Course Management

In its constant search to provide a degree of the highest quality and usefulness, TECH has selected professionals specialized in Early Intervention as part of this teaching staff, who have been in charge of the design of the most advanced contents. Thus, students will learn from the best the keys to their professional development in a field that adapts to new technologies.



“

The most experienced management and faculty will provide you with the most up-to-date knowledge on Research and Innovation in Psychology, preparing you to face the most demanding challenges in this area”

Management



Mr. Álvaro Alfonso Suárez

- Psychopedagogue specializing in SEN students
- Teacher of educational reinforcement for SEN students
- Technician in Social and Health Care for Dependent People in Social Institutions
- Social Integration Technician
- Graduate in Psychopedagogy from the University of Laguna



04

Structure and Content

The structure and all the didactic resources of this curriculum have been designed by the reputed professionals that make up TECH's team of experts in this area of Psychology. These specialists have used their extensive experience and state-of-the-art knowledge to create practical and completely up-to-date content. All this, based on the most efficient pedagogical methodology, TECH Relearning.



“

Expand your knowledge of Early Intervention, thanks to the most innovative teaching materials and a wide variety of additional content available on the Online Campus"

Module 1. Early Intervention

- 1.1. Educational Research and Innovation Introduction
 - 1.1.1. Conceptualization and Historical Evolution of Early Care. Relationship between Development and Early Learning
 - 1.1.1.1. Concept of Early Care
 - 1.1.1.2. Historical Evolution of Early Care
 - 1.1.1.3. Relationship between Development and Early Learning
- 1.2. Prevention and Main Areas in Early Care
 - 1.2.1. Phases in the Research Process. Spheres and Agents
 - 1.2.1.1. Phases in the Research Process in Early Care
 - 1.2.1.2. Spheres in Early Care
 - 1.2.1.3. Early Care Agents
 - 1.2.2. Child Development and Early Care Centers
- 1.3. Neurodevelopment during the First Years of Life
 - 1.3.1. Major Biological and Social Risk Factors. Compensation Tools
 - 1.3.1.1. Main Biological Risk Factors
 - 1.3.1.2. Main Social Risk Factors
 - 1.3.1.3. Compensation Tools
 - 1.3.2. Plasticity and Brain Function
 - 1.3.1.1. Concept of Brain Plasticity
 - 1.3.1.2. Brain Function
- 1.4. Psychoeducational Early Intervention in Social-Cognitive Development
 - 1.4.1. Theoretical Approaches to Cognitive Development. Cognitive Development from 0 to 6 years old
 - 1.4.1.1. Theoretical Approaches to Cognitive Development
 - 1.4.1.2. Cognitive Development from 0 to 6 years old
 - 1.4.2. The Preoperational Period
 - 1.4.2.1. Development in the Preoperational Period
- 1.5. Psychoeducational Early Intervention in Social-Linguistic Development
 - 1.5.1. Early Language Development, Warning Signs, and Early Language Intervention
 - 1.5.1.1. Early Language Development
 - 1.5.1.2. Warning Signs during Early Language Development
 - 1.5.1.3. Early Language Intervention



- 1.6. Psychoeducational Early Intervention in Socio-Affective Competence
 - 1.6.1. Social-emotional Development and Early Intervention in Social-emotional Development
 - 1.6.1.1. Social-emotional Development
 - 1.6.1.2. Social Contexts and Interactions in Childhood
 - 1.6.1.3. Early Intervention in Social-emotional Development
- 1.7. Early Psychoeducational Intervention in Children at Social Risk
 - 1.7.1. Situations of Social Risk. Typology of Maltreatment during Childhood
 - 1.7.1.1. Social Risk in Childhood
 - 1.7.1.2. Types of Maltreatment During Childhood
 - 1.7.2. Methodological and Adaptation Strategies in Risk Situations
 - 1.7.2.1. Early Intervention Strategies
 - 1.7.2.2. Adaptation and Coping Strategies in Social Risk Situations
- 1.8. Early Care Intervention Programs
 - 1.8.1. Intervention Models and Program Typology in Early Intervention Assessment
 - 1.8.1.1. Early Intervention Models
 - 1.8.1.2. Types of Early Care Programs
 - 1.8.1.3. Program Evaluation in Early Care

“ Thanks to the most efficient teaching methodology, TECH Relearning, you will be able to acquire new knowledge in a precise and natural way, without spending too much time studying”

05 Methodology

This academic program offers students a different way of learning. Our methodology uses a cyclical learning approach: **Relearning**. This teaching system is used, for example, in the most prestigious medical schools in the world, and major publications such as the **New England Journal of Medicine** have considered it to be one of the most effective.



Discover Relearning, a system that abandons conventional linear learning, to take you through cyclical teaching systems: a way of learning that has proven to be extremely effective, especially in subjects that require memorization"

At TECH we use the Case Method

What should a professional do in a given situation? Throughout the program, students will face multiple simulated clinical cases, based on real patients, in which they will have to do research, establish hypotheses, and ultimately resolve the situation. There is an abundance of scientific evidence on the effectiveness of the method. Specialists learn better, faster, and more sustainably over time.

With TECH the psychologist experiences a way of learning that is shaking the foundations of traditional universities around the world.



According to Dr. Gérvas, the clinical case is the annotated presentation of a patient, or group of patients, which becomes a "case", an example or model that illustrates some peculiar clinical component, either because of its teaching power or because of its uniqueness or rarity. It is essential that the case is based on current professional life, trying to recreate the real conditions in the psychologist's professional practice.

“

Did you know that this method was developed in 1912, at Harvard, for law students? The case method consisted of presenting students with real-life, complex situations for them to make decisions and justify their decisions on how to solve them. In 1924, Harvard adopted it as a standard teaching method”

The effectiveness of the method is justified by four fundamental achievements:

1. Psychologists who follow this method not only master the assimilation of concepts, but also develop their mental capacity by means of exercises to evaluate real situations and apply their knowledge.
2. Learning is solidly translated into practical skills that allow the psychologist to better integrate knowledge into clinical practice.
3. Ideas and concepts are understood more efficiently, given that the example situations are based on real-life.
4. Students like to feel that the effort they put into their studies is worthwhile. This then translates into a greater interest in learning and more time dedicated to working on the course.

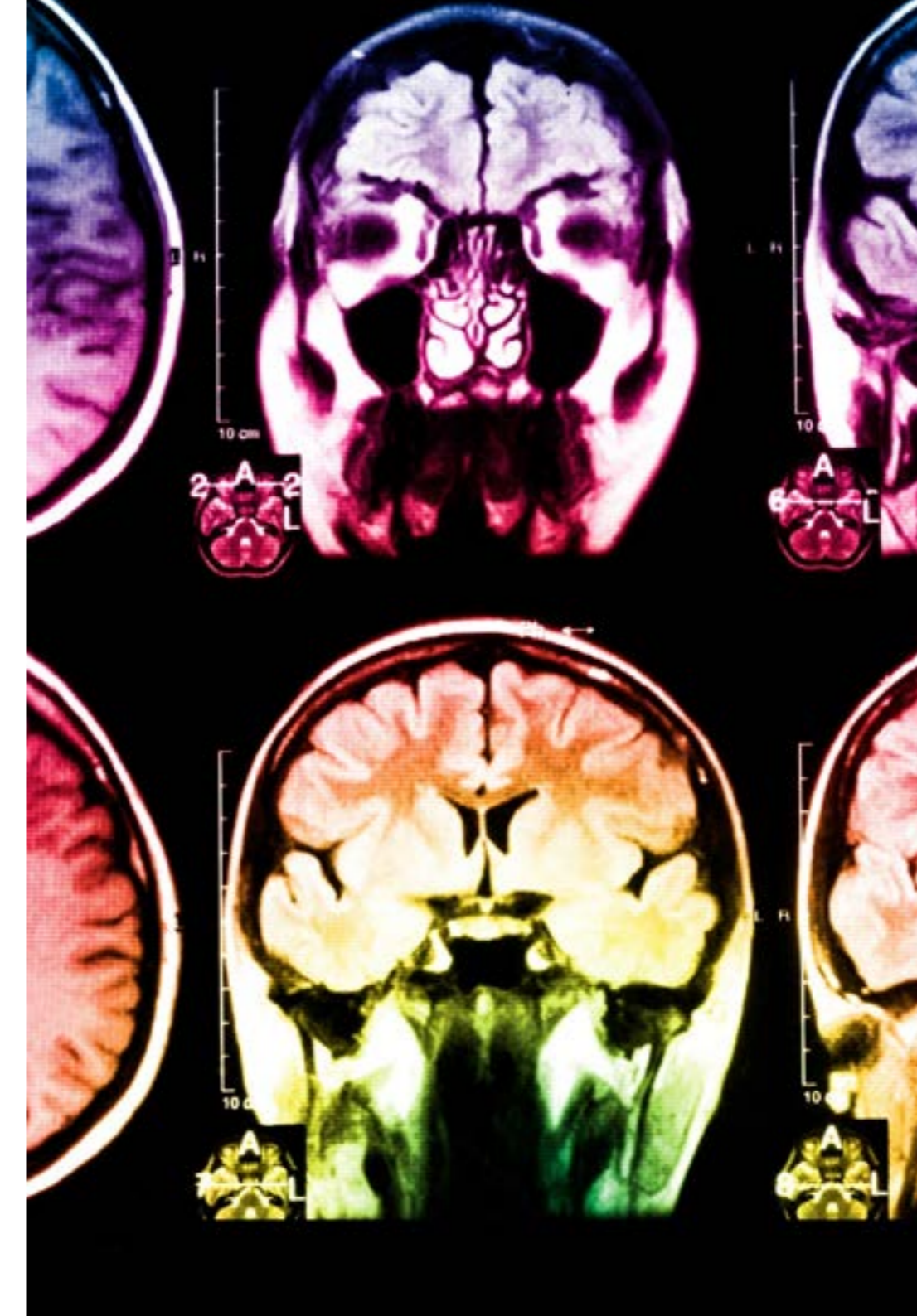
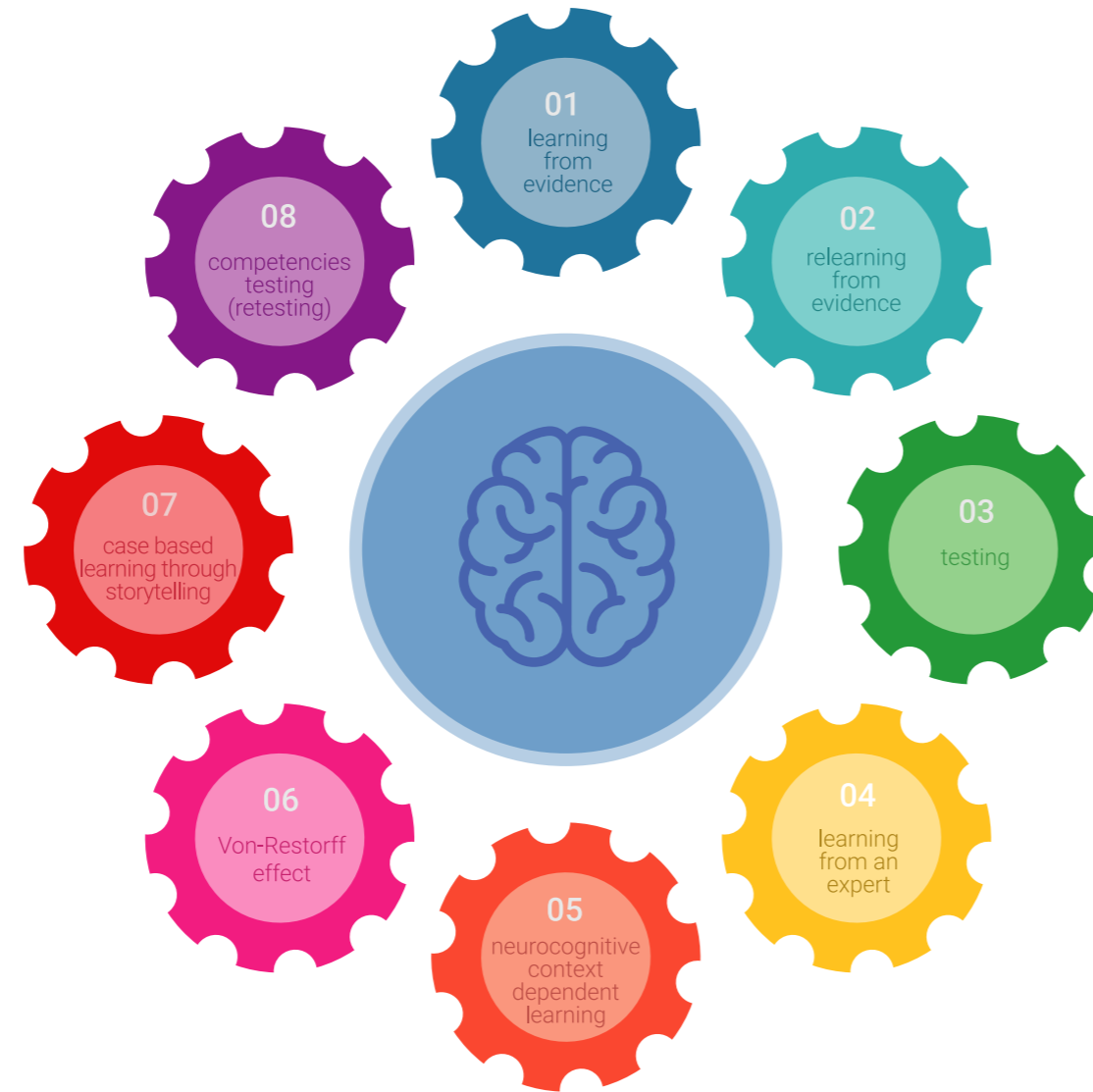


Relearning Methodology

At TECH we enhance the case method with the best 100% online teaching methodology available: Relearning.

Our university is the first in the world to combine the study of clinical cases with a 100% online learning system based on repetition, combining a minimum of 8 different elements in each lesson, which is a real revolution compared to the simple study and analysis of cases.

The psychologist will learn through real cases and by solving complex situations in simulated learning environments. These simulations are developed using state-of-the-art software to facilitate immersive learning.



At the forefront of world teaching, the Relearning method has managed to improve the overall satisfaction levels of professionals who complete their studies, with respect to the quality indicators of the best online university (Columbia University).

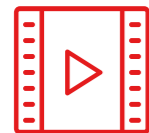
This methodology has trained more than 150,000 psychologists with unprecedented success in all clinical specialties. Our pedagogical methodology is developed in a highly competitive environment, with a university student body with a strong socioeconomic profile and an average age of 43.5 years old.

Relearning will allow you to learn with less effort and better performance, involving you more in your training, developing a critical mindset, defending arguments, and contrasting opinions: a direct equation for success.

In our program, learning is not a linear process, but rather a spiral (learn, unlearn, forget, and re-learn). Therefore, we combine each of these elements concentrically.

The overall score obtained by our learning system is 8.01, according to the highest international standards.

This program offers the best educational material, prepared with professionals in mind:



Study Material

All teaching material is produced by the specialists who teach the course, specifically for the course, so that the teaching content is highly specific and precise.

These contents are then applied to the audiovisual format, to create the TECH online working method. All this, with the latest techniques that offer high quality pieces in each and every one of the materials that are made available to the student.



Latest Techniques and Procedures on Video

TECH introduces students to the latest techniques, to the latest educational advances, to the forefront of current psychology. All of this in direct contact with students and explained in detail so as to aid their assimilation and understanding. And best of all, you can watch the videos as many times as you like.



Interactive Summaries

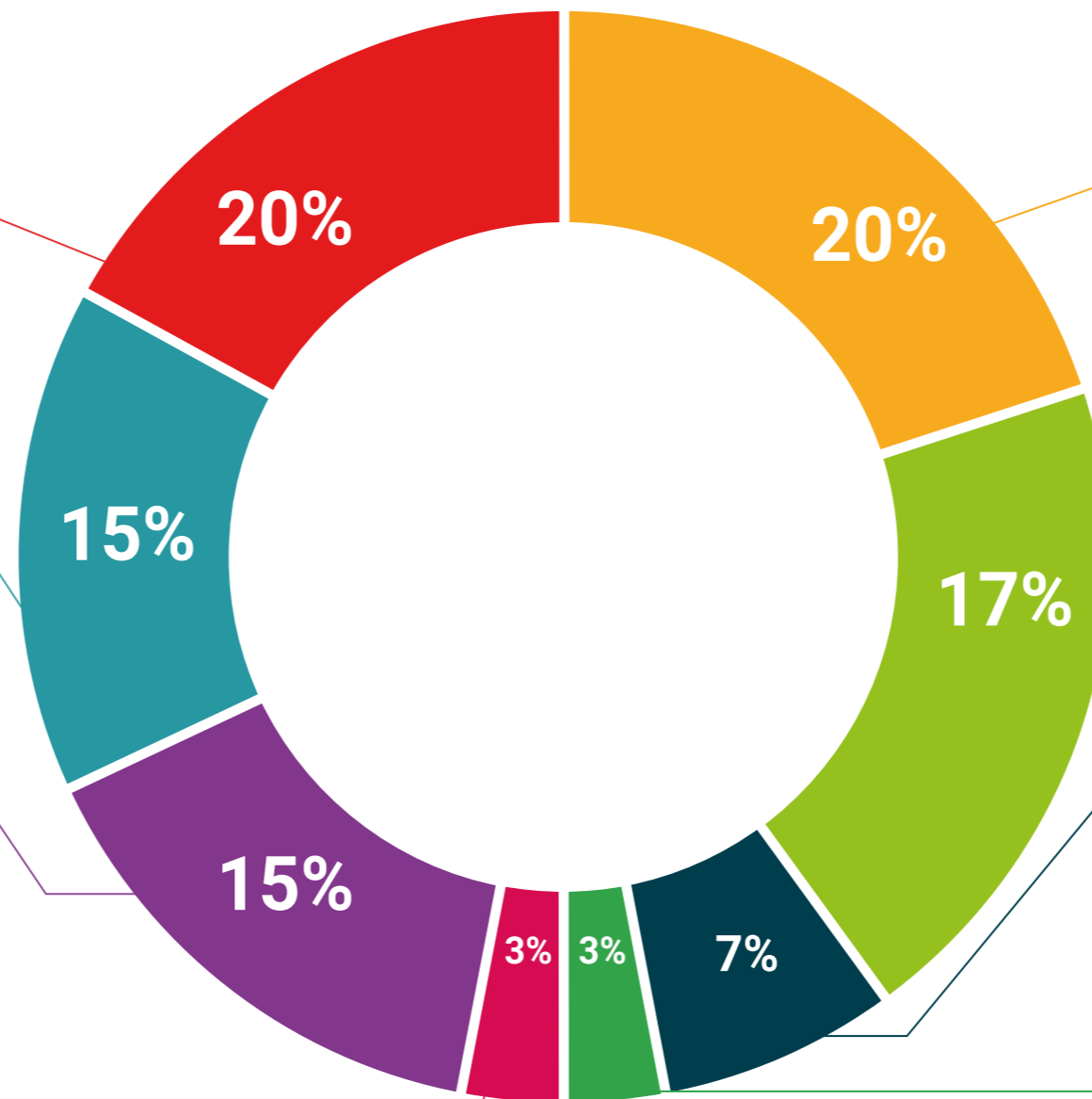
The TECH team presents the contents attractively and dynamically in multimedia lessons that include audio, videos, images, diagrams, and concept maps in order to reinforce knowledge.

This exclusive educational system for presenting multimedia content was awarded by Microsoft as a "European Success Story".



Additional Reading

Recent articles, consensus documents and international guidelines, among others. In TECH's virtual library, students will have access to everything they need to complete their course.



Expert-Led Case Studies and Case Analysis

Effective learning ought to be contextual. Therefore, TECH presents real cases in which the expert will guide students, focusing on and solving the different situations: a clear and direct way to achieve the highest degree of understanding.



Testing & Retesting

We periodically evaluate and re-evaluate students' knowledge throughout the program, through assessment and self-assessment activities and exercises, so that they can see how they are achieving their goals.



Classes

There is scientific evidence suggesting that observing third-party experts can be useful.

Learning from an Expert strengthens knowledge and memory, and generates confidence in future difficult decisions.



Quick Action Guides

TECH offers the most relevant contents of the course in the form of worksheets or quick action guides. A synthetic, practical, and effective way to help students progress in their learning.



06

Certificate

The Postgraduate Certificate in Early Intervention guarantees students, in addition to the most rigorous and up-to-date education, access to a Postgraduate Certificate issued by TECH Technological University.

“

Successfully complete this program and receive your university qualification without having to travel or fill out laborious paperwork”

This **Postgraduate Certificate in Early Intervention** contains the most complete and up-to-date program on the market.

After the student has passed the assessments, they will receive their corresponding **Postgraduate Certificate** issued by **TECH Technological University** via tracked delivery*.

The diploma issued by **TECH Technological University** will reflect the qualification obtained in the Postgraduate Certificate, and meets the requirements commonly demanded by labor exchanges, competitive examinations, and professional career evaluation committees.

Title: **Postgraduate Certificate in Early Intervention**

Official N° of hours: **150 h.**



*Apostille Convention. In the event that the student wishes to have their paper diploma issued with an apostille, TECH EDUCATION will make the necessary arrangements to obtain it, at an additional cost.

future
health confidence people
education information tutors
guarantee accreditation teaching
institutions technology learning
community commitment
personalized service innovation
knowledge present quality
development languages
virtual classroom



Postgraduate Certificate Early Intervention

- » Modality: **online**
- » Duration: **6 weeks**
- » Certificate: **TECH Technological University**
- » Dedication: **16h/week**
- » Schedule: **at your own pace**
- » Exams: **online**

Postgraduate Certificate Early Intervention

