

# Postgraduate Certificate

## Child and Adolescent Intelligence





## Postgraduate Certificate Child and Adolescent Intelligence

- » Modality: online
- » Duration: 6 weeks
- » Certificate: TECH Technological University
- » Dedication: 16h/week
- » Schedule: at your own pace
- » Exams: online

Website: [www.techtitute.com/us/psychology/postgraduate-certificate/child-adolescent-intelligence](http://www.techtitute.com/us/psychology/postgraduate-certificate/child-adolescent-intelligence)

# Index

01

Introduction

---

*p. 4*

02

Objectives

---

*p. 8*

03

Structure and Content

---

*p. 12*

04

Methodology

---

*p. 16*

05

Certificate

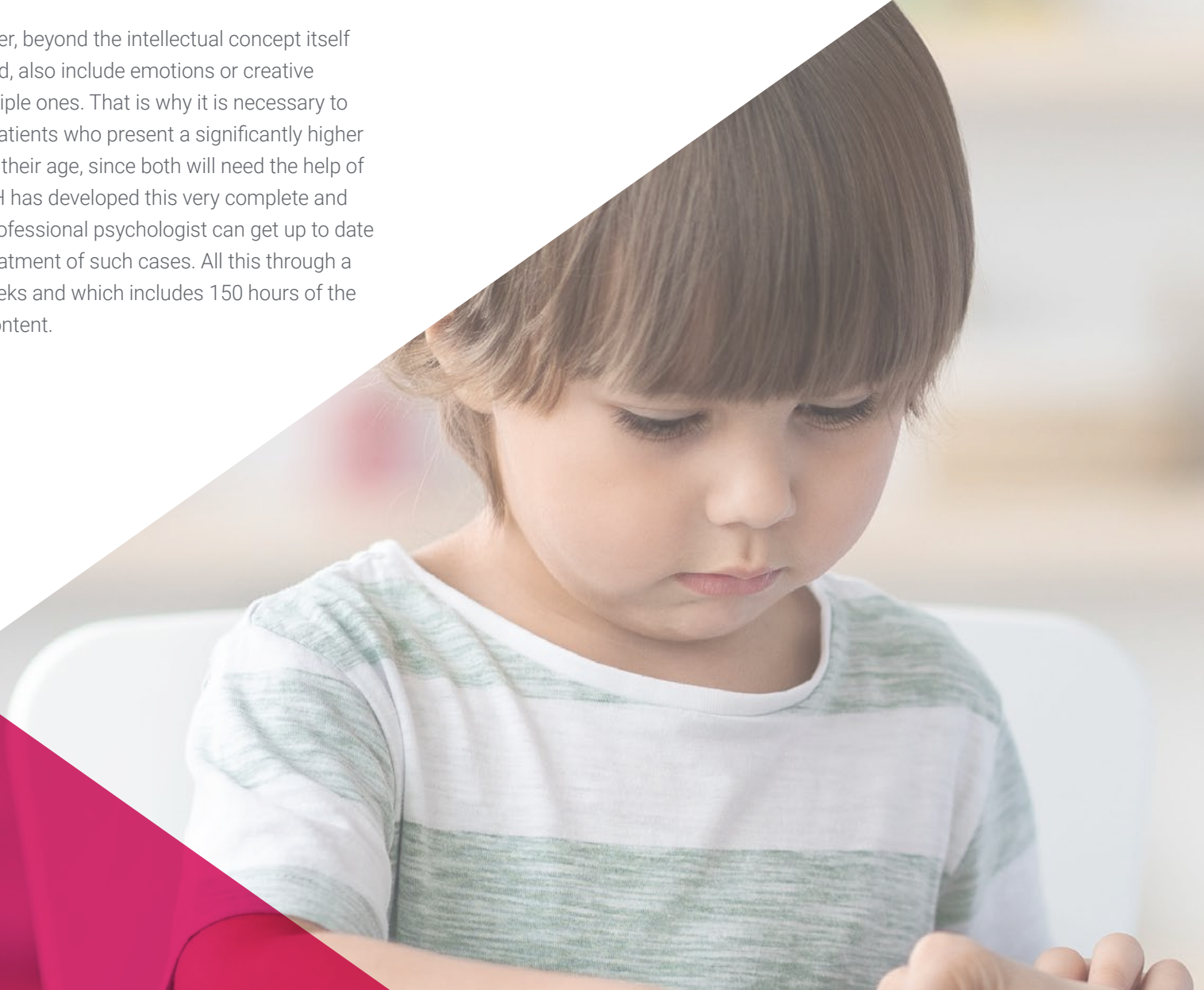
---

*p. 24*

# 01

# Introduction

The various fields that intelligence can cover, beyond the intellectual concept itself and to which this term is usually associated, also include emotions or creative and artistic abilities framed within the multiple ones. That is why it is necessary to prioritize both in children and adolescent patients who present a significantly higher or lower development than they should for their age, since both will need the help of a specialist to manage it. That is why TECH has developed this very complete and intensive program, with the aim that the professional psychologist can get up to date on everything related to the therapeutic treatment of such cases. All this through a 100% online program developed over 6 weeks and which includes 150 hours of the best theoretical, practical and additional content.





“

*A program designed by experts in child and adolescent psychology and exclusively aimed at bringing you up to date in an intensive way in only 150 hours"*

In the field of psychology, the concept of intelligence covers a large number of conditions that can range from the significant development of above-average intellectual abilities to the most frequent ones related to learning disorders and disability. The early and accurate diagnosis of this type of pathologies is essential, since, in most cases, implementing a therapeutic treatment adapted to the patient is beneficial for the improvement of their quality of life, as well as for their social development.

For this reason, and with the aim that specialists in the field of children and adolescents, can be up to date on the latest developments related to this area, TECH has developed this complete and intensive Postgraduate Certificate. It is a multidisciplinary educational experience that will cover, through 6 weeks, the different aspects of intelligence, delving into its assessment and diagnosis and the creation of intervention programs. In this way, you will be able to learn in detail the advances that have been made in the management of patients with intellectual disabilities, high abilities, disorders, etc.

All this through a 100% online program that includes 150 hours of the best theoretical, practical and additional material. In addition, all the content will be available from the beginning of the activity and can be downloaded for consultation from any device with an Internet connection. In this way, graduates will be able to enjoy an educational experience adapted to their needs, which will have a considerable influence on the improvement they can offer to their patients and their families.

This **Postgraduate Certificate in Child and Adolescent Intelligence** contains the most complete and up-to-date program on the market. The most important features include:

- ♦ Practical cases presented by experts in Psychology
- ♦ The graphic, schematic and practical contents with which it is designed provide advanced and practical information on those disciplines that are essential for professional practice
- ♦ Practical exercises where self-assessment can be used to improve learning
- ♦ Its special emphasis on innovative methodologies
- ♦ Theoretical lessons, questions to the expert, debate forums on controversial topics, and individual reflection assignments
- ♦ Content that is accessible from any fixed or portable device with an Internet connection



*Knowing the figure of Daniel Goleman and his important contributions to the field of child and adolescent psychology will help you to have a different perspective of the concept of intelligence"*

“

*You will delve into the assessment and diagnostic strategies that are currently obtaining the best results, so that you can implement them in your practice from the beginning of the Postgraduate Certificate"*

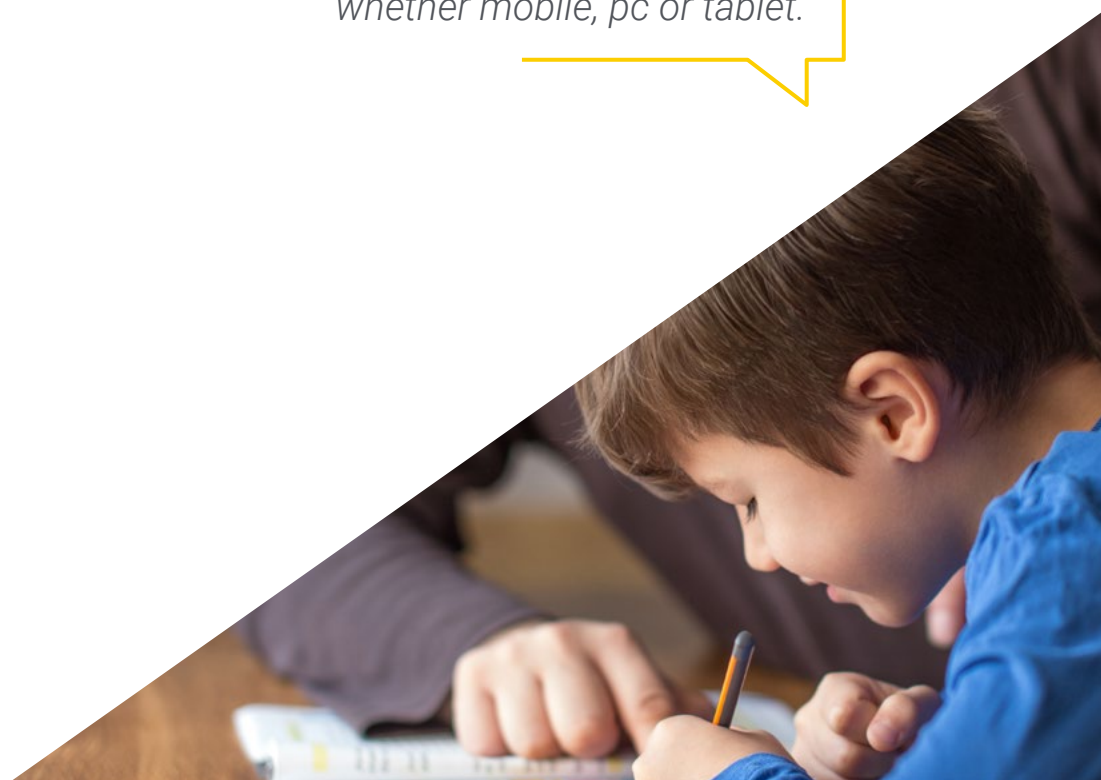
The program's teaching staff includes professionals from the sector who contribute their work experience to this educational program, as well as renowned specialists from leading societies and prestigious universities.

Its multimedia content, developed with the latest educational technology, will allow professionals to learn in a contextual and situated learning environment, i.e., a simulated environment that will provide immersive education programmed to prepare in real situations.

The design of this program focuses on Problem-Based Learning, by means of which professionals must try to solve the different professional practice situations that arise during the academic course. For this purpose, the student will be assisted by an innovative interactive video system created by renowned and experienced experts.

*Get up to date on comorbidities arising from other mental disorders in children and adolescents with intellectual disabilities, with this Postgraduate Certificate.*

*You can access the Virtual Classroom from any device with an Internet connection, whether mobile, pc or tablet.*



# 02

# Objectives

The different disorders and deficits related to intelligence and the importance of a specialized psychological intervention in its therapeutic management is what has led TECH to develop this program. Therefore, the objective of the same is to provide professionals with the most up-to-date information related to this field, as well as the most innovative and effective teaching tools that will allow them to get up to date through this 100% online program.







“

*A program at the forefront of the Psychology sector with which you can meet your educational goals in a guaranteed way"*



## General Objectives

---

- ♦ Delve into the concept of intelligence and its multiple types
- ♦ Develop an up-to-date knowledge related to the different disorders and deficits of intelligence

“

*A unique educational opportunity to delve into emotional intelligence and its main theories”*





## Specific Objectives

---

- Know the history of the concept of intelligence
- Study and differentiate the authors and their theories on intelligence
- Investigate intervention programs related to learning abilities
- Know the method of evaluation and diagnosis of intelligences
- Know and differentiate the concept of intellectual disability and high abilities

# 03

## Structure and Content

One of the reasons why TECH programs have been so well received in the university sector is because of the pioneering use of the *Relearning* methodology in the development of theoretical content. This pedagogical strategy consists of the reiteration of the most important concepts throughout the syllabus, as well as the inclusion of real and simulated case studies. Thanks to this, graduates can update their knowledge in a gradual and natural way, without having to invest extra hours in traditional memorization techniques.



“

*The hours of additional material you will find in the Virtual Classroom will allow you to delve into the aspects of the syllabus that you consider most important for your professional development”*

## Module 1. Intelligence

- 1.1. History and Introduction to the Concept of Intelligence
  - 1.1.1. The Concept of Intelligence
  - 1.1.2. First Works on Intelligence
- 1.2. Multiple intelligences
  - 1.2.1. Concept of Multiple Intelligences
  - 1.2.2. Theory of Multiple Intelligences
- 1.3. Emotional Intelligence
  - 1.3.1. What is Emotional Intelligence?
  - 1.3.2. Main Theories on Emotional Intelligence
  - 1.3.3. Daniel Goleman's Figure
- 1.4. Assessment and Diagnosis
  - 1.4.1. Evaluation and Diagnosis of Intelligence
  - 1.4.2. Major Instruments for Measuring Intelligence
- 1.5. Intellectual Disability
  - 1.5.1. Concept of Intellectual Disability and Comorbidity with Other Mental Health Conditions
  - 1.5.2. Evaluation and Diagnosis of Intellectual Disability
- 1.6. Learning Disorders
  - 1.6.1. What are Learning Disorders?
  - 1.6.2. Main Learning Disorders
  - 1.6.3. Assessment and Diagnosis of Learning Disorders
- 1.7. High Abilities. Differential Diagnosis
  - 1.7.1. Introduction to the Concept of High Abilities
  - 1.7.2. Differential Diagnosis
  - 1.7.3. High Abilities in Autism
- 1.8. Intervention Programs
  - 1.8.1. Principles of the Intervention Programs Related to Intelligence and Learning Disorders
  - 1.8.2. Intervention Programs





“

*Enroll now in this Postgraduate Certificate and do not miss the opportunity to get up to date on intervention programs related to intelligence and learning disorders in a 100% online way"*

05

# Methodology

This academic program offers students a different way of learning. Our methodology uses a cyclical learning approach: **Relearning**.

This teaching system is used, for example, in the most prestigious medical schools in the world, and major publications such as the **New England Journal of Medicine** have considered it to be one of the most effective.





“

*Discover Relearning, a system that abandons conventional linear learning, to take you through cyclical teaching systems: a way of learning that has proven to be extremely effective, especially in subjects that require memorization"*

## At TECH we use the Case Method

What should a professional do in a given situation? Throughout the program, students will face multiple simulated clinical cases, based on real patients, in which they will have to do research, establish hypotheses, and ultimately resolve the situation. There is an abundance of scientific evidence on the effectiveness of the method. Specialists learn better, faster, and more sustainably over time.

*With TECH the psychologist experiences a way of learning that is shaking the foundations of traditional universities around the world.*



According to Dr. Gérvas, the clinical case is the annotated presentation of a patient, or group of patients, which becomes a "case", an example or model that illustrates some peculiar clinical component, either because of its teaching power or because of its uniqueness or rarity. It is essential that the case is based on current professional life, trying to recreate the real conditions in the psychologist's professional practice.

“

*Did you know that this method was developed in 1912, at Harvard, for law students? The case method consisted of presenting students with real-life, complex situations for them to make decisions and justify their decisions on how to solve them. In 1924, Harvard adopted it as a standard teaching method”*

The effectiveness of the method is justified by four fundamental achievements:

1. Psychologists who follow this method not only master the assimilation of concepts, but also develop their mental capacity by means of exercises to evaluate real situations and apply their knowledge.
2. Learning is solidly translated into practical skills that allow the psychologist to better integrate knowledge into clinical practice.
3. Ideas and concepts are understood more efficiently, given that the example situations are based on real-life.
4. Students like to feel that the effort they put into their studies is worthwhile. This then translates into a greater interest in learning and more time dedicated to working on the course.



## Relearning Methodology

At TECH we enhance the case method with the best 100% online teaching methodology available: Relearning.

Our university is the first in the world to combine the study of clinical cases with a 100% online learning system based on repetition, combining a minimum of 8 different elements in each lesson, which is a real revolution compared to the simple study and analysis of cases.

*The psychologist will learn through real cases and by solving complex situations in simulated learning environments. These simulations are developed using state-of-the-art software to facilitate immersive learning.*





At the forefront of world teaching, the Relearning method has managed to improve the overall satisfaction levels of professionals who complete their studies, with respect to the quality indicators of the best online university (Columbia University).

This methodology has trained more than 150,000 psychologists with unprecedented success in all clinical specialties. Our pedagogical methodology is developed in a highly competitive environment, with a university student body with a strong socioeconomic profile and an average age of 43.5 years old.

*Relearning will allow you to learn with less effort and better performance, involving you more in your training, developing a critical mindset, defending arguments, and contrasting opinions: a direct equation for success.*

In our program, learning is not a linear process, but rather a spiral (learn, unlearn, forget, and re-learn). Therefore, we combine each of these elements concentrically.

The overall score obtained by our learning system is 8.01, according to the highest international standards.

This program offers the best educational material, prepared with professionals in mind:



#### Study Material

All teaching material is produced by the specialists who teach the course, specifically for the course, so that the teaching content is highly specific and precise.

These contents are then adapted in audiovisual format, to create the TECH online working method. All this, with the latest techniques that offer high-quality pieces in each and every one of the materials that are made available to the student.



#### Latest Techniques and Procedures on Video

TECH introduces students to the latest techniques, to the latest educational advances, to the forefront of current psychology. All of this in direct contact with students and explained in detail so as to aid their assimilation and understanding. And best of all, you can watch the videos as many times as you like.



#### Interactive Summaries

The TECH team presents the contents attractively and dynamically in multimedia lessons that include audio, videos, images, diagrams, and concept maps in order to reinforce knowledge.

This exclusive educational system for presenting multimedia content was awarded by Microsoft as a "European Success Story".



#### Additional Reading

Recent articles, consensus documents and international guidelines, among others. In TECH's virtual library, students will have access to everything they need to complete their course.





#### Expert-Led Case Studies and Case Analysis

Effective learning ought to be contextual. Therefore, TECH presents real cases in which the expert will guide students, focusing on and solving the different situations: a clear and direct way to achieve the highest degree of understanding.



#### Testing & Retesting

We periodically assess and re-assess students' knowledge throughout the program, through assessment and self-assessment activities and exercises, so that they can see how they are achieving their goals.



#### Classes

There is scientific evidence suggesting that observing third-party experts can be useful.  
Learning from an Expert strengthens knowledge and memory, and generates confidence in future difficult decisions.



#### Quick Action Guides

TECH offers the most relevant contents of the course in the form of worksheets or quick action guides. A synthetic, practical and effective way to help students progress in their learning.



05

# Certificate

The Postgraduate Certificate in Child and Adolescent Intelligence guarantees students, in addition to the most rigorous and up-to-date education, access to a Postgraduate Certificate issued by TECH Technological University.





“

*Successfully complete this program and receive your university qualification without having to travel or fill out laborious paperwork”*

This **Postgraduate Certificate in Child and Adolescent Intelligence** contains the most complete and up-to-date program on the market.

After the student has passed the assessments, they will receive their corresponding **Postgraduate Certificate** issued by **TECH Technological University** via tracked delivery\*.

The diploma issued by **TECH Technological University** will reflect the qualification obtained in the Postgraduate Certificate, and meets the requirements commonly demanded by labor exchanges, competitive examinations, and professional career evaluation committees.

Title: **Postgraduate Certificate in Child and Adolescent Intelligence**

Official N° of Hours: **150 h.**



\*Apostille Convention. In the event that the student wishes to have their paper diploma issued with an apostille, TECH EDUCATION will make the necessary arrangements to obtain it, at an additional cost.

future

health confidence people

education information tutors

guarantee accreditation teaching

institutions technology learning

community commitment

personalized service innovation

knowledge present quality

online

development languages

virtual classroom

**tech** technological  
university

## Postgraduate Certificate Child and Adolescent Intelligence

- » Modality: online
- » Duration: 6 weeks
- » Certificate: TECH Technological University
- » Dedication: 16h/week
- » Schedule: at your own pace
- » Exams: online

# Postgraduate Certificate Child and Adolescent Intelligence

