

Hybrid Professional Master's Degree

Psychological Intervention in Personality Disorders and Psychosis



Hybrid Professional Master's Degree

Psychological Intervention in Personality Disorders and Psychosis

Modality: Hybrid (Online + Clinical Internship)

Duration: 12 months

Certificate: TECH Technological University

Teaching Hours: 1,620 h.

Website: www.techtute.com/us/psychology/hybrid-professional-master-degree/hybrid-professional-master-degree-psychological-intervention-personality-disorders-psychosis

Index

01

Introduction

p. 4

02

Why Study this Hybrid
Professional Master's Degree?

p. 8

03

Objectives

p. 12

04

Competencies

p. 18

05

Course Management

p. 22

06

Educational Plan

p. 26

07

Clinical Internship

p. 34

08

Where Can I Do the
Clinical Internship?

p. 40

09

Methodology

p. 44

10

Certificate

p. 52

01

Introduction

Currently, psychological intervention in personality disorders and psychosis is essential due to its high prevalence in the population. Advances in research have allowed the development of new techniques and effective therapies to address these pathologies, and TECH at the forefront of university education has created this program from the hands of the most versed specialists in the area so that you can perform in 1620 hours of theoretical and practical study a complete Psychological Intervention in Personality Disorders and Psychosis. For this, you will have access to the latest technology available from the most modern virtual platform and the realization of an Internship Program in a hospital center of international reference, which translates into a unique opportunity for students to experience daily practice in a real clinical and multidisciplinary environment.



“

Hybrid Professional Master's Degree in Psychological Intervention in Personality Disorders and Psychosis is the ideal program for those who wish to update their professional profile and daily clinical practice”

Psychological Intervention in Personality Disorders and Psychosis is essential nowadays due to the high prevalence of these pathologies in the population. According to data from the World Health Organization, it is estimated that 1% of the world's population suffers from personality disorders, while psychotic disorders affect about 3% of the population at some point in their lives.

Fortunately, research in this field has advanced significantly in recent years, allowing the development of new techniques and therapies to address these disorders. For example, cognitive behavioral therapy has proven to be effective in the treatment of personality disorders, while mindfulness-based cognitive behavioral therapy has shown promising results in the treatment of schizophrenia.

For psychology professionals, it is essential to be up-to-date on the latest advances and techniques in order to offer the best possible care to their patients. TECH's 100% online Hybrid Professional Master's Degree in Psychological Intervention in Personality Disorders and Psychosis is a unique opportunity to update and improve the skills of professionals in this field. This program of study offers comprehensive and up-to-date teaching in Psychological Intervention in Patients with Personality Disorders and Psychosis, with access to state-of-the-art technological tools and resources.

In addition, students of TECH's Hybrid Professional Master's Degree in Psychological Intervention in Personality Disorders and Psychosis have the opportunity to undertake an Internship Program in a hospital center of international reference, which allows them to experience daily practice in a real and multicultural clinical environment.

This **Hybrid Professional Master's Degree in Psychological Intervention in Personality Disorders and Psychosis** contains the most complete and up-to-date program on the market. The most important features include:

- ♦ Development of more than 100 clinical cases presented by nursing professionals, experts in Psychological Intervention and university professors with extensive experience in patients with Personality Disorders and Psychosis
- ♦ The graphic, schematic, and practical contents with which they are created, provide scientific and practical information on the disciplines that are essential for professional practice
- ♦ The curriculum is designed to be 100% practical, allowing students to apply the theoretical knowledge acquired in a real clinical context
- ♦ Access to the latest technology available in the field of psychology, such as teletherapy and real-time health monitoring, allows students to be up-to-date in their professional practice
- ♦ The teaching staff is composed of Psychologists specialized in various areas, providing students with a comprehensive and updated teaching in Personality Disorders and Psychosis.
- ♦ The opportunity to do the Internship Program in their preferred center allows students to expand their horizons and experience professional practice in an international and multicultural context
- ♦ Students will be able to acquire the competencies necessary to assess, diagnose and treat patients with personality disorders and psychosis, using the most innovative and effective therapeutic techniques
- ♦ All this will be complemented by theoretical lessons, questions to the expert, debate forums on controversial topics, and individual reflection assignments
- ♦ Content that is accessible from any fixed or portable device with an Internet connection
- ♦ Furthermore, you will be able to carry out a clinical internship in one of the best hospital centers

“

Add to your online study the clinical internship in a reference clinical center with the highest standards of quality and technological level in an elite hospital center”

Take an intensive 3-week internship in a prestigious center and acquire all the knowledge to grow personally and professionally.

You will combine theory and professional practice through a demanding and rewarding educational approach.

In this proposal for a Hybrid Professional Master's Degree, of a professionalizing nature and hybrid learning modality, the program is aimed at updating psychology professionals who develop their functions in the units in the Intervention of Patients with Personality Disorders and Psychosis, and who require a high level of qualification. The contents are based on the latest scientific evidence, and oriented in a didactic way to integrate theoretical knowledge into clinical practice, and the theoretical-practical elements will facilitate the updating of knowledge and allow decision making in patient management.

Thanks to its multimedia content elaborated with the latest educational technology, they will allow the Psychology professional to obtain a situated and contextual learning, that is to say, a simulated environment that will provide an immersive learning programmed to train in real situations. This program is designed around Problem-Based Learning, whereby the physician must try to solve the different professional practice situations that arise during the course. For this purpose, the students will be assisted by an innovative interactive video system created by renowned and experienced experts.



02

Why Study this Hybrid Professional Master's Degree?

This program of study offers a comprehensive and up-to-date education in Psychological Intervention in Patients with Personality Disorders and Psychosis, providing students with the opportunity to acquire solid theoretical knowledge and practical skills in a clinical setting. In addition, access to the latest technology available in the field of Psychology allows students to update their professional practice and be at the forefront of the latest techniques and methods in the area. For this reason, the Hybrid Professional Master's Degree in Psychological Intervention in Personality Disorders and Psychosis is essential for those who seek to improve their practice and skills in this crucial area of Psychology.



“

Enter into real and simulated scenarios to deal with the most specific cases of Personality Disorders and Psychosis for your learning”

1. Update from the latest technology available

The Hybrid Professional Master's Degree in Psychological Intervention in Personality Disorders and Psychosis allows students to update themselves with the latest technology available in the field of psychology. Students will have access to state-of-the-art technological tools and resources to enhance their professional practice, such as teletherapy or real-time health monitoring. This way, students will be able to apply the latest techniques and methods in their daily practice and provide the best possible care to their patients.

2. Gain in-depth knowledge from the experience of top specialists

The Hybrid Professional Master's Degree in Psychological Intervention in Personality Disorders and Psychosis offers students the opportunity to deepen their learning through the experience of the best specialists in the field. Students will be able to learn from highly trained professionals, with experience in psychological intervention, which will allow them to apply the knowledge acquired in their professional practice and improve their performance in this field of psychology.

3. Enter first-class clinical environments

TECH carefully selects all available internship sites to ensure that specialists have access to prestigious clinical settings in the field of psychology. This way, students will be able to experience daily practice in a rigorous, demanding and comprehensive environment, applying the latest scientific theses and postulates in their work methodology.





4. Combine the best theory with state-of-the-art practice

TECH offers an innovative and practical learning approach that allows students to access the most advanced procedures in the field of Psychological Intervention, and most importantly, apply them in their professional practice in just 3 weeks. This new 100% hands-on learning model offers a unique opportunity for Psychology professionals looking to improve their skills and stay current in their field.

5. Expand the boundaries of knowledge

TECH provides its students with the opportunity to do an Internship Program not only in prestigious national centers, but also abroad. This way, specialists can expand their horizons and update their knowledge by working alongside the best professionals in top level hospitals in different parts of the world. This is a unique opportunity that only a leading digital university like TECH can offer, giving students the opportunity to broaden their perspectives and experience professional practice in an international and multicultural context.



*You will have full practical immersion
at the center of your choice"*

03

Objectives

The Hybrid Professional Master's Degree has been designed to train students in the necessary skills to update and deepen the key aspects of psychological intervention, providing them with the theoretical and practical knowledge to achieve the proposed objectives. Students will acquire full faculties in a versatile and essential field of psychology, guiding them towards excellence in a constantly evolving sector. As a result, TECH establishes general and specific objectives to guarantee the satisfaction of the future graduate.





“

TECH has the most advanced resources to meet its main objective: your real and updated learning”



General Objective

- The main objective of the Hybrid Professional Master's Degree in Psychological Intervention in Personality Disorders and Psychosis is to provide a complete and updated education in psychological intervention in patients with personality disorders and psychosis. This program of study aims to train students in the assessment, diagnosis and treatment of these disorders using the most innovative and effective therapeutic techniques. In addition, this program seeks to promote the development of practical skills and the application of theoretical knowledge in a clinical context, so it has a period of practical training, so students can prepare to face the challenges that arise in this field of Psychology





Specific Objectives

Module 1. Psychosocial Assessment in Psychotic and Personality Disorders

- ♦ Manage the patient's clinic, as well as provide the necessary skills to work in a multidisciplinary way
- ♦ Identify and make decisions about patients taking into account the social and emotional fabric in which they find themselves
- ♦ Master the course within a framework of intervention in psychotic disorders and personality disorders

Module 2. The clinical interview with the psychotic patient and disorders

- ♦ Performing and adapting intervention protocols psychological within an interdisciplinary framework
- ♦ Addressing the clinical use of the drug
- ♦ Manage the dynamics of therapeutic time

Module 3. Questionnaires and tests used in the diagnosis of psychosis and personality disorders

- ♦ Employ knowledge about the side effects of drugs to ensure that they do not disable psychotherapy intervention with psychotic disorders
- ♦ Management of emotional crises with psychotropic drugs in these diseases
- ♦ Master the tools of evaluation and intervention using all the indicators of intervention

Module 4. Psychotic Psychopathology

- ♦ Identify and use information from social and family agents
- ♦ Develop the intervention with the drug according to the mental logic of the different age groups
- ♦ Describe the effects on the social fabric of the psychotic patient

Module 5. Personality Disorders and Associated Pathologies

- ♦ Master the adverse and permanent effects of these diseases
- ♦ Manage and stabilize the emotional and affective deficiencies of the patient within the intervention
- ♦ Master and manage the differential characteristics with which psychotic pathologies are presented

Module 6. Intervention in Personality and Psychotic Disorders From the Most Relevant Models

- ♦ Identify and master the clinical and prognostic features of different childhood and adolescent disorders with pharmacological intervention due to these disorders
- ♦ Use the intervention to determine at what point it is necessary for other professionals to join the process
- ♦ Develop and understand mutations and new forms of illness in personality disorders

Module 7. Psychosocial Intervention in Psychotic Disorders

- ♦ Develop knowledge that discriminates an important problem of natural evolution within the process of family coexistence
- ♦ Manage and master the systemic psychopathology that causes these disorders
- ♦ Develop follow-up models that express the changes in the pathologies of stress and chronic pathological mental states





“

This program will generate a sense of security in the performance of your Psychological Intervention, which will help you stand out in your professional environment”

04 Skills

TECH aims to improve both the knowledge and skills of its graduates in each of its degrees. Therefore, the Hybrid Professional Master's Degree offers a complete and guaranteed education for those Psychology professionals who are looking to improve their skills and competencies. Students will have the opportunity to implement the most innovative and effective therapeutic techniques in their daily practice thanks to this program of study.





“

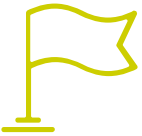
TECH is committed to providing up-to-date and high quality education to ensure the professional success of its graduates in the field of Psychology”



General Skills

- ♦ Describe the competencies of psycho-diagnosis, psychological assessment and expertise for effective intervention work with psychotic disorders and personality disorders
- ♦ Understand the importance of psychosocial intervention in psychotic disorders and personality disorders
- ♦ Understand the reactions of a person suffering from these disorders
- ♦ Ability to offer an initial psychological support at the onset of a psychotic condition
- ♦ Manage basic communication and negotiation skills applied to the management of the person in crisis
- ♦ Master specific skills needed for effective crisis intervention
- ♦ Create and apply action protocols adapted to the specific situations that cause an emergency situation
- ♦ Offer strategies for the prevention and management of stress caused by a crisis situation in the family environment
- ♦ Develop group interventions for psychosocial reintegration
- ♦ Understand the basis of the most effective models and techniques used in the therapy of psychosis and Personality Disorders
- ♦ Train for the management of a psychosocial team
- ♦ Master strategies for the relationship with the multidisciplinary team
- ♦ Assess and intervene in minor medical pathologies resulting from psychotic pathology in patients





Specific Skills

- ♦ Develop theories that explain the events that explain psychotic pathology
 - ♦ Use and master projective techniques to assess the psychotic patient
 - ♦ Manage and discover intrapersonal elements in the subject through the Rorschach test
 - ♦ Identify and master the drawing test and the desiderative test
 - ♦ Developing conclusions with the Max Lüscher color test
 - ♦ Interpret and recognize the psychic state in the TAT study
 - ♦ Explain and describe the results of neurological tests specific to the differential diagnosis of the differential diagnosis
 - ♦ Use and master the CBCA and SVA story credibility scales
 - ♦ Explain the appropriateness of the intervention process
 - ♦ Describe the mechanisms of preposition
 - ♦ Raise awareness of the importance of psychological support in emergencies of psychotic and bipolar disorders
 - ♦ Differentiate the peculiar characteristics of the different profiles in Personality Disorders
 - ♦ Identify the different levels of severity
 - ♦ Determine why psychosocial support is important in these disease processes
 - ♦ Discriminate the different moments of psychosocial intervention
 - ♦ Understand the place of the psychologist in these disorders and his or her relationship with the rest of the stakeholders
- ♦ Understand the objectives of the intervention and its purpose
 - ♦ Master the basic principles of crisis intervention
 - ♦ Identify and avoid the most common errors in the intervention with the psychotic patient and Personality Disorders
 - ♦ Understand what stress is and its general characteristics in psychotic conditions
 - ♦ Understanding the neurological functioning of the brain in psychotic and bipolar disorders
 - ♦ Identify the psychological defense mechanisms that a person deploys when faced with a situation that overwhelms him or her
 - ♦ Assess what is normal and what is not among the reactions of a person in a critical situation



Update your professional profile in an advanced theoretical-practical study of Personality Disorders and Psychosis from the hands of the most experienced teachers"

05

Course Management

The teaching staff of the Hybrid Professional Master's Degree in Psychological Intervention in Personality Disorders and Psychosis includes psychologists specialized in various areas, such as Time-Limited Psychotherapies, Depressive Syndrome and Clinical and Health Psychology, among other specialisms in the area. These highly qualified professionals offer students a comprehensive and updated education in the personality disorders and psychosis, based on their extensive experience and solid theoretical knowledge. With this teaching students can be confident that they will receive quality and high-level learning.





“

*Learn from the best with this degree
and get an enriching and personalized
learning experience”*

Management



Dr. Segovia Garrido, Domingo

- ♦ Director of the Tinte23 Psychology Center
- ♦ General Health Psychologist at the European Institute of Limited Time Psychotherapies (IEPTL)
- ♦ Psychologist at the Open Minds Association of La Roda
- ♦ Former President of the LASSUS Association for help against Depressive Syndrome
- ♦ Psychologist of the LASSUS Association for help against Depressive Syndrome
- ♦ Degree in Psychology from the University of Murcia
- ♦ Master's Degree in Occupational Risk Prevention
- ♦ Master's Degree in Integrated Systems Management
- ♦ Master's Degree in Clinical and Health Psychology

Professors

Dr. González Agüero, Mónica

- ♦ Psychologist in charge of the Department of Child and Adolescent Psychology at Hospital Quirónsalud Marbella and Avatar Psicólogos
- ♦ Psychologist and Teacher at the European Institute of Limited Time Psychotherapies (IEPTL)
- ♦ Degree in Psychology from the Universidad Nacional de Educación a Distancia (UNED)

Dr. Roldán, Lucía

- ♦ Health Psychologist
- ♦ Cognitive-Behavioral Intervention Specialist
- ♦ Master's Degree in Time-Limited Psychotherapy and Health Psychology
- ♦ Expert in Energy Therapy Intervention

Dr. De Dios González, Antonio

- ♦ Director of Avatar Psychologists
- ♦ Director of the Psychology Department at Hospital Quirónsalud Marbella
- ♦ Director of the Clinical and Health Area in Iridia Hispania
- ♦ Trainer at the Spanish Red Cross
- ♦ Specialist in Clinical Hypnosis and Relaxation
- ♦ Specialist in Emotional Freedom Techniques by the World Center for EFT
- ♦ Transpersonal Therapist in the Spanish School of Transpersonal Development
- ♦ Degree in Psychology from the Complutense University of Madrid
- ♦ Master in Time-Limited Psychotherapy and Health Psychology at the European Institute of Time-Limited Psychotherapies
- ♦ Master in Neurolinguistic Programming at the SNLP-The Society of NLP by Richard Bandler

Dr. Aguado Romo, Roberto

- ♦ President of the European Institute of Time-Limited Psychotherapy
- ♦ Psychologist in private practice
- ♦ Researcher in Time Limited Psychotherapy
- ♦ Guidance team coordinator for many schools
- ♦ Author of several books on Psychology
- ♦ Communicator and expert in Psychology in the media
- ♦ University courses and studies teacher
- ♦ Master's Degree in Clinical and Health Psychology
- ♦ Specialist in Clinical Psychology
- ♦ Selective Dissociation Targeting Specialist

Dr. Martínez Lorca, Manuela

- ♦ Health Psychologist
- ♦ Teacher in the Department of Psychology at the University of Castilla La Mancha
- ♦ Master in Time-Limited Psychotherapy and Health Psychology of the European Institute of Time-Limited Psychotherapies
- ♦ Specialist in Clinical Hypnosis and Relaxation
- ♦ Degree in Psychology
- ♦ Doctor of Medicine

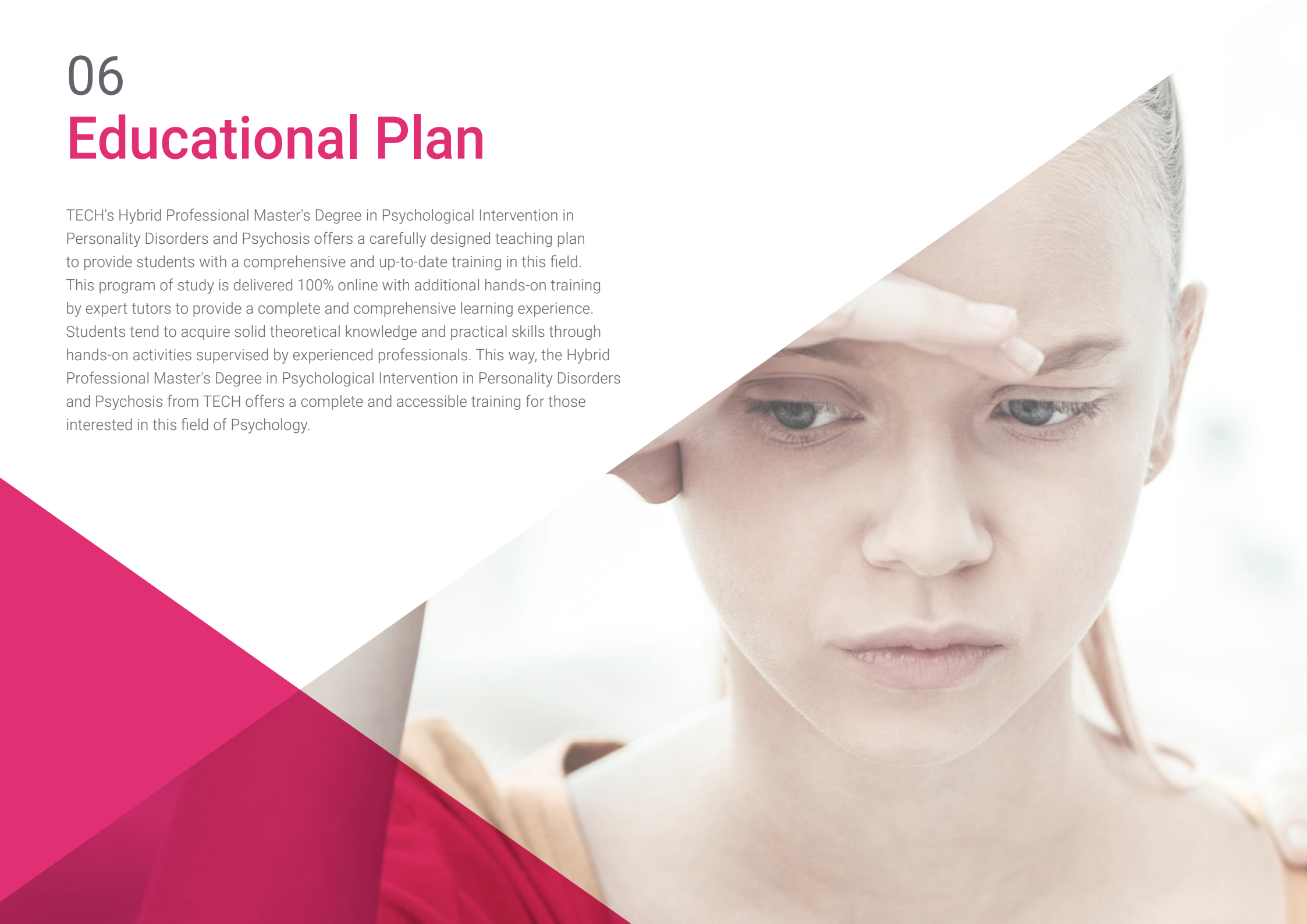


The most relevant technological and scientific advances in the field of Clinical Psychology will be presented by leading professionals in this field"

06

Educational Plan

TECH's Hybrid Professional Master's Degree in Psychological Intervention in Personality Disorders and Psychosis offers a carefully designed teaching plan to provide students with a comprehensive and up-to-date training in this field. This program of study is delivered 100% online with additional hands-on training by expert tutors to provide a complete and comprehensive learning experience. Students tend to acquire solid theoretical knowledge and practical skills through hands-on activities supervised by experienced professionals. This way, the Hybrid Professional Master's Degree in Psychological Intervention in Personality Disorders and Psychosis from TECH offers a complete and accessible training for those interested in this field of Psychology.



“

This curriculum will bring you up to date with the most advanced psychological intervention techniques 100% online and with the opportunity to apply them in practice”

Module 1. Psychosocial Assessment in Psychotic and Personality Disorders

- 1.1. Psychosocial Examination
 - 1.1.1. The Evaluation Interview
 - 1.1.2. Observation
 - 1.1.3. Psychological Tests
- 1.2. Why Seek Therapeutic Treatment?
- 1.3. The Therapeutic Relationship
 - 1.3.1. Elements of the Therapeutic Bond or Relationship
 - 1.3.2. Personal, attitudinal, emotional and behavioral characteristics of the psychotherapist
 - 1.3.3. Personal, attitudinal, emotional and behavioral characteristics of the patient that are going to pose a difficulty in the therapeutic relationship
 - 1.3.4. Emotional Bonding Using the "U" Technique
- 1.4. Pharmacological Strategies
 - 1.4.1. Mechanisms of Action of Pharmacokinetics
 - 1.4.2. Mechanisms of Action of Hypothermia
- 1.5. Antidepressants
 - 1.5.1. Tricyclics
 - 1.5.2. Selective Serotonin Reuptake Inhibitors (SSRIs)
 - 1.5.3. Mixed Serotonin and Norepinephrine Reuptake Inhibitors (SNRIs)
 - 1.5.4. Mixed quaternary serotonin and norepinephrine reuptake inhibitors
- 1.6. Anxiolytics
 - 1.6.1. Benzodiazepines
- 1.7. Mood Stabilizers
- 1.8. Antipsychotics
- 1.9. Psychological Strategies
- 1.10. Clinical Cases

Module 2. The clinical interview with the psychotic patient and disorders

- 2.1. Active Interview (CHSV)
 - 2.1.1. Information Theory
 - 2.1.2. Communication Channels
 - 2.1.3. Communication System
- 2.2. Axioms of the Interview
 - 2.2.1. It is Impossible Not To Communicate
 - 2.2.2. Content and Relationship
 - 2.2.3. Affective Value
 - 2.2.4. Digital and Analog Communication
 - 2.2.5. Symmetry and Asymmetry
- 2.3. Exploring Communication
 - 2.3.1. Verbal Communication
 - 2.3.2. Non-Verbal Communication
 - 2.3.3. Double Bond
 - 2.3.4. Psychopathology of Communication
 - 2.3.5. A Gesture is Worth a Thousand Words
- 2.4. Medical History
 - 2.4.1. Personal
 - 2.4.2. Family
 - 2.4.3. Generational
- 2.5. Medical History
 - 2.5.1. Psychopathological Biography
 - 2.5.2. Biography of Medical Diseases
 - 2.5.3. Biography Social Problems
- 2.6. General Structure of the Mental Examination
 - 2.6.1. Non-Verbal Communication and Emotions
 - 2.6.2. Communication Around a Table
- 2.7. Semiology
 - 2.7.1. Signs
 - 2.7.2. Symptoms

- 2.8. Epistemology of Diagnosis
 - 2.8.1. Descriptive Syndromic Diagnosis Against the Disease
 - 2.8.2. Nosology Categorical Versus Dimensional Diagnosis
- 2.9. Multiple Diagnoses and Comorbidity
- 2.10. Clinical Versus Forensic Criteria
- 2.11. Expert Interview Biases to Avoid
- 2.12. Clinical Cases

Module 3. Questionnaires and Tests Used in the Diagnosis of Psychosis and Personality Disorders

- 3.1. Projective Techniques in Expert Appraisal
- 3.2. Rorschach Test
 - 3.2.1. Application
 - 3.2.2. Presentation of Sheets
 - 3.2.3. Reaction Time
 - 3.2.4. Time of the Patient in Front of the Sheet
 - 3.2.5. The Survey
 - 3.2.6. Rorschach Assessment
- 3.3. Expressive Techniques
- 3.4. Drawing (HTP)
 - 3.4.1. From the House
 - 3.4.2. Tree
 - 3.4.3. Person
- 3.5. Free Drawing
- 3.6. Family Drawing
- 3.7. Düss Fables
- 3.8. Desiderative Test
- 3.9. Max Lüscher Color Test
- 3.10. Thematic Apperception Test TAT
- 3.11. Psychometric Tests in Expertise
- 3.12. Wechsler Intelligence Test
 - 3.12.1. WISC-IV
 - 3.12.2. WAIS-IV
- 3.13. Neuropsychological Maturity Questionnaire
- 3.14. Raven's Progressive Arrays
- 3.15. The Goodenough Test
- 3.16. The Personality Test
- 3.17. Millon Multiaxial Clinical Millon Inventory (MCMI-III)
 - 3.17.1. Modifying Scales: Desirability and Index of Alteration
 - 3.17.2. Basic Personality Scales: Schizoid, Avoidant, Depressive, Depressive, Dependent, Histrionic, Narcissistic, Antisocial, Aggressive-Sadistic, Compulsive, Passive-Aggressive, Self-Destructive
 - 3.17.3. Severe Personality Scales: Schizotypal, Borderline and Paranoid
 - 3.17.4. Moderate Clinical Syndromes: Anxiety, Hysteriform, Hypomania, Depressive Neurosis, Alcohol Abuse, Drug Abuse, P-Trauma Stress D
 - 3.17.5. Severe Clinical Syndromes: Psychotic Thinking, Major Depression and Psychotic Delirium
- 3.18. 16 Catell PF-5
 - 3.18.1. Affability, reasoning, stability, dominance, animation, attention to rules, boldness, sensibility, vigilance, abstraction, privacy, apprehension, openness to change, self-sufficiency, perfectionism and tension Incorporates a "social desirability" (SI), an "infrequency" (IN) and an "acquiescence" (AQ) scale to control for response bias and an "acquiescence" (AQ) scale to control for response bias
- 3.19. Child and Adolescent Assessment System BASC
 - 3.19.1. Internalized problems: Depression, Anxiety, Social Anxiety, Somatic Complaints, Obsessive-Compulsion and Post-Traumatic Symptomatology
 - 3.19.2. Externalized problems: hyperactivity and impulsivity, attention problems, aggressiveness, defiant behavior, anger control problems, antisocial behavior
 - 3.19.3. Specific Problems: Developmental Delay, Eating Behavior Problems, Learning Disabilities, Schizotypy, Substance Abuse, etc
- 3.20. Personality Assessment Inventory PAI
 - 3.20.1. 4 validity scales (inconsistency, infrequency, negative impression, and positive impression)
 - 3.20.2. 11 clinical scales (Somatic Complaints, Anxiety, Anxiety Related Disorders, Depression, Mania, Paranoia, Schizophrenia, Borderline Traits, Antisocial Traits, Alcohol Problems, and Drug Problems)
 - 3.20.3. 5 Scales of Consideration for Treatment (Aggression, Suicidal Thoughts, Stress, Lack of Social Support, and Refusal of Treatment)
 - 3.20.4. 2 Scales of Interpersonal Relationships (Dominance and Agreeableness)
 - 3.20.5. 30 Subscales Providing More Detailed Information

- 3.21. Children's Personality Questionnaire CPQ
 - 3.21.1. Reserved/Open, Low/High Intelligence, Emotionally Affected/Stable, Calm/Excitable, Submissive/Dominant, Sober/Enthusiastic, Unconcerned/Conscientious, Inhibited/Intrepid, Hard/Soft Sensitivity, Confident/Doubtful, Simple/Astute, Serene/Apprehensive, Less or More Integrated, and Relaxed/Tensed
- 3.22. Clinical Analysis Questionnaire-CAQ
- 3.23. Trait-State Anxiety Questionnaire in Children STAIC and in Adults STAI
- 3.24. Multifactor Self-Assessment Test of Child Adjustment - TAMAI
- 3.25. Questionnaire for the Assessment of Adopters, Caregivers, Guardians and Mediators
- 3.26. Short Symptom Checklist - SCL-90 R
- 3.27. Study of the Story's Credibility
 - 3.27.1. CBCA System (Criteria Based Content Analysis)
 - 3.27.2. The Statement Validity Assessment (SVA) UdoUndeutsch
 - 3.27.3. SVA = Interview + CBCA + Validity Checklist
- 3.28. Clinical Cases

Module 4. Psychotic Psychopathology

- 4.1. Schizophrenia
- 4.2. Schizophreniform Disorder
- 4.3. Schizoaffective Disorder
- 4.4. Delusional Disorder
- 4.5. Brief Psychotic Disorder
- 4.6. Substance Induced Psychotic Disorder
- 4.7. Catatonia
- 4.8. Bipolar Disorder
 - 4.8.1. Type I
 - 4.8.2. Type I
- 4.9. Cyclothymic Disorder
 - 4.9.1. With Anxiety
- 4.10. Delirium
 - 4.10.1. For Substance Intoxication
 - 4.10.2. For Substance Withdrawal
 - 4.10.3. Medication-Induced

- 4.11. Alzheimer's Disease
- 4.12. Frontotemporal Lobe Degeneration
- 4.13. Traumatic Brain Injury
- 4.14. Vascular Disease
- 4.15. Parkinson's Disease
- 4.16. Huntington's Disease
- 4.17. Neurological Malignant Syndrome
- 4.18. Disorders Caused by Medication
 - 4.18.1. Acute Dystonia
 - 4.18.2. Acatisia
 - 4.18.3. Tardive Dyskinesia
 - 4.18.4. Antidepressant Discontinuation Syndrome
- 4.19. Clinical Cases

Module 5. Personality Disorders and Associated Pathologies

- 5.1. General Personality Disorder
 - 5.1.1. Cognition
 - 5.1.2. Affectivity
 - 5.1.3. Interpersonal Functioning
 - 5.1.4. Impulse Control
- 5.2. Intervention in Personality Disorders
- 5.3. Paranoid
 - 5.3.1. Mistrust
 - 5.3.2. Suspiciousness
 - 5.3.3. Deception
 - 5.3.4. Concern
 - 5.3.5. Resentment
- 5.4. Schizoid
 - 5.4.1. Displacer
 - 5.4.2. Loneliness
 - 5.4.3. Disinterest
 - 5.4.4. Difficulty in Intimate Relationships
 - 5.4.5. Emotional Coldness

- 5.5. Schizotypal
 - 5.5.1. Reference Idea
 - 5.5.2. Unusual Perception
 - 5.5.3. Strange Thoughts
 - 5.5.4. Suspiciousness
 - 5.5.5. Inappropriate Affection
 - 5.5.6. Strange Appearance
 - 5.5.7. Social Anxiety
- 5.6. Antisocial
 - 5.6.1. Illegality
 - 5.6.2. Deception
 - 5.6.3. Impulsiveness
 - 5.6.4. Irresponsibility
 - 5.6.5. Absence of Remorse
- 5.7. Limit
 - 5.7.1. Homelessness
 - 5.7.2. Interpersonal Instability
 - 5.7.3. Abnormalities About Identity
 - 5.7.4. Autolysis
 - 5.7.5. Affective Instability
 - 5.7.6. Chronic Emptiness
 - 5.7.7. Irritability
- 5.8. Histrionic
 - 5.8.1. Theatrical
 - 5.8.2. Seduction
 - 5.8.3. Emotional Lability
 - 5.8.4. Self-Dramatization
 - 5.8.5. Suggestibility
- 5.9. Narcissist
 - 5.9.1. Megalomania
 - 5.9.2. Fantasies of Success
 - 5.9.3. Privilege
 - 5.9.4. Exploits Relationships
 - 5.9.5. Lacks Empathy
 - 5.9.6. Envy
- 5.10. Evasion
 - 5.10.1. Avoidance
 - 5.10.2. Shame
 - 5.10.3. Concern over Criticism
 - 5.10.4. Inhibition in Relationships
 - 5.10.5. Does not Take Risks
- 5.11. Dependent
 - 5.11.1. Indecision
 - 5.11.2. Can Not Take Responsibility
 - 5.11.3. Discomfort
 - 5.11.4. Fear of Loneliness
 - 5.11.5. Irrational Fear
- 5.12. Obsessive Compulsive
 - 5.12.1. Concern
 - 5.12.2. Perfectionism
 - 5.12.3. Excessive Dedication
 - 5.12.4. Hyperawareness
 - 5.12.5. Collectionism
 - 5.12.6. Greed
- 5.13. Intervention in Dissociative Disorders
 - 5.13.1. Dissociative Identity Disorder
 - 5.13.2. Dissociative Amnesia
 - 5.13.3. Depersonalization/Derealization Disorder
- 5.14. Intervention in Impulse Control Disorders
 - 5.14.1. Oppositional Defiant Disorder
 - 5.14.2. Intermittent Explosive Disorder
 - 5.14.3. Behavioral Disorder
 - 5.14.4. Destructive Disorder
- 5.15. Intervention in Eating Disorders
 - 5.15.1. Pica
 - 5.15.2. Anorexia Nervosa
 - 5.15.3. Bulimia Nervosa

- 5.16. Intervention in Sleep Disorders
 - 5.16.1. Insomnia
 - 5.16.2. Hypersomnia
 - 5.16.3. Narcolepsy
 - 5.16.4. Central Sleep Apnea
 - 5.16.5. Parasomnia
- 5.17. Interventions in Addictive Behavior Disorders
- 5.18. Clinical Cases

Module 6. Intervention in Personality and Psychotic Disorders From the Most Relevant Models

- 6.1. Behavioral Therapy in Personality and Psychotic Disorders
- 6.2. Cognitive Therapy in Personality and Psychotic Disorders
- 6.3. Rational Emotive Behavior Therapy in Personality and Psychotic Disorders
- 6.4. Stress Management Therapy in Personality and Psychotic Disorders
- 6.5. Beck's Cognitive Therapy in Personality and Psychotic Disorders
- 6.6. Cognitive Therapies Video Lesson
- 6.7. Human Therapies in Personality and Psychotic Disorders
- 6.8. Gestalt Therapy and Psychodynamic Therapies in Personality and Psychotic Disorders
- 6.9. Interpersonal Therapy in Personality and Psychotic Disorders
- 6.10. Human Therapies Video Lesson
- 6.11. Time-Limited Psychotherapy (Eclectic Psychotherapy) in Personality and Psychotic Disorders
- 6.12. Clinical Cases

Module 7. Psychosocial Intervention in Psychotic Disorders

- 7.1. Family Mediation
 - 7.1.1. Pre-Mediation
 - 7.1.2. Negotiation
 - 7.1.3. Mediation
 - 7.1.3.1. Reconciliation
 - 7.1.3.2. Reparation

- 7.2. Notion of Conflict
 - 7.2.1. Changing the Attitude Towards Team Cooperation
 - 7.2.2. Improve Attitude
 - 7.2.3. Emphasizing Performance
- 7.3. Types of Conflict
 - 7.3.1. Attraction-Attraction
 - 7.3.2. Evasion-Evasion
 - 7.3.3. Attraction-Evasion
- 7.4. Mediation, Arbitration and Neutral Evaluation
 - 7.4.1. Mediator is Present, Does Not Have an Influence
 - 7.4.2. Arbitration Makes Decisions by Listening to the Parties
 - 7.4.3. Neutral Evaluation Draw Consequences From the Data Obtained
- 7.5. Coaching and Psychology
 - 7.5.1. Equalities
 - 7.5.2. Differences
 - 7.5.3. Contradictions
 - 7.5.4. Impersonation
- 7.6. Learning in Coaching
 - 7.6.1. Declaring Bankruptcy
 - 7.6.2. Stripping Off the Masks
 - 7.6.3. Re-Engineering Ourselves
 - 7.6.4. Focusing on the Task
- 7.7. Facing Challenges that can be Taken on
 - 7.7.1. Locus of Control
 - 7.7.2. Expectations
- 7.8. Focused on the Activity
 - 7.8.1. Focusing Techniques
 - 7.8.2. Thought Control techniques
- 7.9. Clear Goals
 - 7.9.1. Definition of Where We Are
 - 7.9.2. Definition of Where we Want to Go



- 7.10. Feeding Back on the Activity
 - 7.10.1. Placing the Attitude in Action and not in Anticipatory Thinking
 - 7.10.2. Verbalizing Small Achievements
 - 7.10.3. Be Flexible and Allow for Frustration
- 7.11. Working on Self-Deception
 - 7.11.1. Know that We are Lying to Ourselves
 - 7.11.2. Know that We Modify Reality
 - 7.11.3. Knowing that We Conform Reality to our Beliefs
- 7.12. Conflict Management
 - 7.12.1. Emotional Management
 - 7.12.2. Saying What I Think, but From HOME Emotions
- 7.13. Dialogue With Beliefs
 - 7.13.1. Self-Dialogue
 - 7.13.2. Cognitive restructuring
- 7.14. Managing Stress
 - 7.14.1. Breathing Techniques
 - 7.14.2. Emotional Management Techniques
 - 7.14.3. Relaxation Techniques
- 7.15. Emotional Management
 - 7.15.1. Identifying Emotions
 - 7.15.2. Identifying Suitable Emotions
 - 7.15.3. Changing Emotions for Others
- 7.16. Biology of the Stress Response
- 7.17. Biochemistry of Stress



This program will allow you to advance in your career comfortably”

07

Clinical Internship

Once the 100% online study process of the theoretical program with exemplary real cases has been completed, the student will be able to go to a national and international reference hospital center to put into practice everything they have learned from the hands of the best experts. They will have all the necessary resources and the accompaniment of a tutor, both in the preparation and in the development of the clinical practices.



“

You will have the opportunity to take the practical training in the best hospital centers of your choice”

The Internship Program period of this program specialized in Psychological Intervention in Personality Disorders and Psychosis consists of a clinical internship in a reference hospital center of the student's choice for a 3-week internship, from Monday to Friday with 8 consecutive hours of work, alongside an associate specialist. This stay will allow you to see real patients alongside a team of professionals of reference in the area of clinical psychology, applying the most innovative procedures and planning the latest generation therapeutics in each case presented.

In this practical training proposal, the objective is to improve and develop the skills necessary to provide medical care in areas and situations that require high qualification, with a specific focus on training for safe and high-level professional performance for the patient. This is a unique opportunity to learn while working in an innovative hospital that focuses on real-time monitoring of patients' health and where digital culture is a fundamental part of the training of its professionals. Hands-on training becomes the perfect setting for this innovative experience in honing the medical skills needed in the 21st century.

The practical part will be carried out with the active participation of the student performing the activities and procedures of each area of competence (learning to learn and learning to do), with the accompaniment and guidance of the professors and other training partners that facilitate teamwork and multidisciplinary integration as transversal competences for the praxis of Clinical Psychology (learning to be and learning to relate).

The procedures described below will form the basis of the practical part of the internship, and their implementation is subject to both the suitability of the patients and the availability of the center and its workload, with the proposed activities being as follows:





Module	Practical Activity
Approach of the psychotic patient and personality disorders	Conduct a thorough psychological evaluation to establish an adequate diagnosis
	Design an individualized therapeutic plan that includes pharmacological therapy and psychotherapy
	Providing emotional support and disease education to the patient and family
	Establish a strong therapeutic alliance to encourage patient collaboration in their treatment
Intervention with patients with pathologies associated with personality disorders	Identifying and addressing comorbidities that may be present in the patient
	Use cognitive-behavioral therapy techniques to work on modifying dysfunctional thought patterns and behavior
	Encourage the development of social and emotional skills to improve the patient's quality of life
	Work on relapse prevention and consolidation of the achievements obtained in therapy
Latest techniques applied to psychological intervention	Use Acceptance and Commitment Therapy (ACT) to encourage acceptance of difficult thoughts and emotions and action towards the patient's personal values
	Employ dialectical behavioral therapy (DBT) to work on emotional regulation and tolerance of emotional distress
	Work with compassion-based cognitive therapy to develop self-compassion and compassion for others
	Employ Neurofeedback techniques to improve brain functioning and emotional regulation
Implementation of advanced therapies in Psychological Intervention	Use systemic therapy to work on the interpersonal relationship of the patient and family
	Use psychodynamic therapy to work on the identification and resolution of subconscious emotional conflicts
	Use Gestalt therapy to work on awareness and personal responsibility
	Use solution-focused brief therapy to work on the identification and resolution of patient-specific problems
Psychosocial Intervention in Psychotic Disorders	Employ occupational therapy to improve the patient's daily living skills and functioning in daily life
	Work on the patient's social and community inclusion through group activities and rehabilitation programs
	Promote education about the illness and reduction of the stigma associated with psychotic disorders
	Work on relapse prevention and consolidation of the achievements obtained in therapy

Civil Liability Insurance

This institution's main concern is to guarantee the safety of the trainees and other collaborating agents involved in the internship process at the company. Among the measures dedicated to achieve this is the response to any incident that may occur during the entire teaching-learning process.

To this end, this entity commits to purchasing a civil liability insurance policy to cover any eventuality that may arise during the course of the internship at the center.

This liability policy for interns will have broad coverage and will be taken out prior to the start of the internship program period. That way professionals will not have to worry in case of having to face an unexpected situation and will be covered until the end of the internship program at the center.



General Conditions of the Internship Program

The general terms and conditions of the internship agreement for the program are as follows:

1. TUTOR: During the Hybrid Professional Master's Degree, students will be assigned with two tutors who will accompany them throughout the process, answering any doubts and questions that may arise. On the one hand, there will be a professional tutor belonging to the internship center who will have the purpose of guiding and supporting the student at all times. On the other hand, they will also be assigned with an academic tutor whose mission will be to coordinate and help the students during the whole process, solving doubts and facilitating everything they may need. In this way, the student will be accompanied and will be able to discuss any doubts that may arise, both clinical and academic.

2. DURATION: The internship program will have a duration of three continuous weeks, in 8-hour days, 5 days a week. The days of attendance and the schedule will be the responsibility of the center and the professional will be informed well in advance so that they can make the appropriate arrangements.

3. ABSENCE: If the students does not show up on the start date of the Hybrid Professional Master's Degree, they will lose the right to it, without the possibility of reimbursement or change of dates. Absence for more than two days from the internship, without justification or a medical reason, will result in the professional's withdrawal from the internship, therefore, automatic termination of the internship. Any problems that may arise during the course of the internship must be urgently reported to the academic tutor.

4. CERTIFICATION: Professionals who pass the Hybrid Professional Master's Degree will receive a certificate accrediting their stay at the center.

5. EMPLOYMENT RELATIONSHIP: The Hybrid Professional Master's Degree shall not constitute an employment relationship of any kind.

6. PRIOR EDUCATION: Some centers may require a certificate of prior education for the Hybrid Professional Master's Degree. In these cases, it will be necessary to submit it to the TECH internship department so that the assignment of the chosen center can be confirmed.

7. DOES NOT INCLUDE: The Hybrid Professional Master's Degree will not include any element not described in the present conditions. Therefore, it does not include accommodation, transportation to the city where the internship takes place, visas or any other items not listed.

However, students may consult with their academic tutor for any questions or recommendations in this regard. The academic tutor will provide the student with all the necessary information to facilitate the procedures in any case.

08

Where Can I Do the Clinical Internship?

TECH offers its students the best nationally and internationally renowned hospitals for the realization of internships in Psychological Intervention in Personality Disorders and Psychosis. Thus, they will put into practice everything they have learned during the theoretical study process with the help of the best tutors and professionals in the field of Clinical Psychology. This way, TECH consolidates its commitment to quality education.





“

You will enjoy a practical stay of 3 weeks in the best hospital centers for your integral learning”



The student will be able to complete the practical part of this Hybrid Professional Master's Degree at the following centers:



Psychology

Hospital HM Modelo

Country	City
Spain	La Coruña

Address: Rúa Virrey Osorio, 30, 15011, A Coruña

Network of private clinics, hospitals and specialized centers distributed throughout Spain.

Related internship programs:

- Anaesthesiology and Resuscitation
- Palliative Care



Psychology

Hospital HM Rosaleda

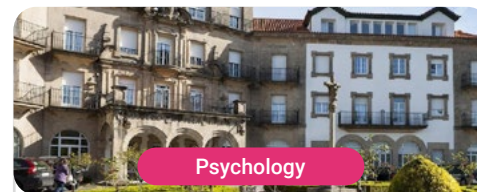
Country	City
Spain	La Coruña

Address: Rúa de Santiago León de Caracas, 1, 15701, Santiago de Compostela, A Coruña

Network of private clinics, hospitals and specialized centers distributed throughout Spain.

Related internship programs:

- Hair Transplantation
- Orthodontics and Dentofacial Orthopedics



Psychology

Hospital HM La Esperanza

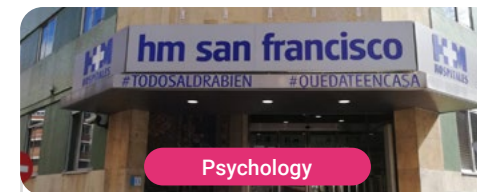
Country	City
Spain	La Coruña

Address: Av. das Burgas, 2, 15705, Santiago de Compostela, A Coruña

Network of private clinics, hospitals and specialized centers distributed throughout Spain.

Related internship programs:

- Oncology Nursing
- Clinical Ophthalmology



Psychology

Hospital HM San Francisco

Country	City
Spain	León

Address: C. Marqueses de San Isidro, 11, 24004, León

Network of private clinics, hospitals and specialized centers distributed throughout Spain.

Related internship programs:

- Update in Anesthesiology and Resuscitation
- Nursing in the Traumatology Department



Psychology

Hospital HM Regla

Country	City
Spain	León

Address: Calle Cardenal Landázuri, 2, 24003, León

Network of private clinics, hospitals and specialized centers distributed throughout Spain.

Related internship programs:

- Update on Psychiatric Treatment in Minor Patients



Psychology

Hospital HM Montepíncipe

Country	City
Spain	Madrid

Address: Av. de Montepíncipe, 25, 28660, Boadilla del Monte, Madrid

Network of private clinics, hospitals and specialized centers distributed throughout Spain.

Related internship programs:

- Palliative Care
- Aesthetic Medicine



Psychology

Hospital HM Torreldones

Country	City
Spain	Madrid

Address: Av. Castillo Olivares, s/n, 28250, Torreldones, Madrid

Network of private clinics, hospitals and specialized centers distributed throughout Spain.

Related internship programs:

- Anaesthesiology and Resuscitation
- Palliative Care



Psychology

Hospital HM Sanchinarro

Country	City
Spain	Madrid

Address: Calle de Oña, 10, 28050, Madrid

Network of private clinics, hospitals and specialized centers distributed throughout Spain.

Related internship programs:

- Anaesthesiology and Resuscitation
- Palliative Care



Psychology

Policlínico HM Gabinete Velázquez

Country: Spain
City: Madrid

Address: C. de Jorge Juan, 19, 1° 28001, 28001, Madrid

Network of private clinics, hospitals and specialized centers distributed throughout Spain.

Related internship programs:

- Clinical Nutrition in Medicine
- Aesthetic Plastic Surgery



Psychology

Policlínico HM La Paloma

Country: Spain
City: Madrid

Address: Calle Hilados, 9, 28850, Torrejón de Ardoz, Madrid

Network of private clinics, hospitals and specialized centers distributed throughout Spain.

Related internship programs:

- Advanced Operating Room Nursing
- Orthodontics and Dentofacial Orthopedics



Psychology

Policlínico HM Virgen del Val

Country: Spain
City: Madrid

Address: Calle de Zaragoza, 6, 28804, Alcalá de Henares, Madrid

Network of private clinics, hospitals and specialized centers distributed throughout Spain.

Related internship programs:

- Diagnosis in Physiotherapy
- Physiotherapy in Early Care



Psychology

Policlínico HM Rosaleda Lalín

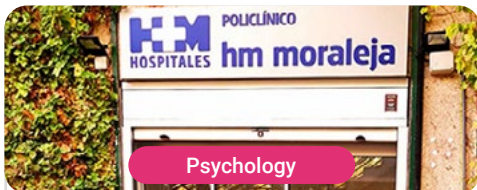
Country: Spain
City: Pontevedra

Address: Av. Buenos Aires, 102, 36500, Lalín, Pontevedra

Network of private clinics, hospitals and specialized centers distributed throughout Spain.

Related internship programs:

- Advances in Hematology and Hemotherapy
- Neurological Physiotherapy



Psychology

Policlínico HM Moraleja

Country: Spain
City: Madrid

Address: P.º de Alcobendas, 10, 28109, Alcobendas, Madrid

Network of private clinics, hospitals and specialized centers distributed throughout Spain.

Related internship programs:

- Rehabilitation Medicine in Acquired Brain Injury Management



Psychology

Policlínico HM Sanchinarro

Country: Spain
City: Madrid

Address: Av. de Manoteras, 10, 28050, Madrid

Network of private clinics, hospitals and specialized centers distributed throughout Spain.

Related internship programs:

- Gynecological Care for Midwives
- Nursing in the Digestive Tract Department



Psychology

Policlínico HM Imi Toledo

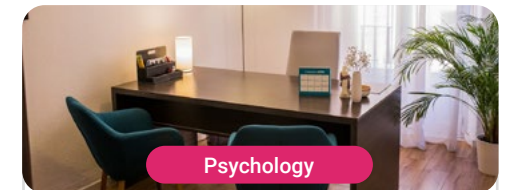
Country: Spain
City: Toledo

Address: Av. de Irlanda, 21, 45005, Toledo

Network of private clinics, hospitals and specialized centers distributed throughout Spain.

Related internship programs:

- Electrotherapy in Rehabilitation Medicine
- Hair Transplantation



Psychology

Centro Limis

Country: Spain
City: Malaga

Address: C. Duquesa de Parcent, 3, 29001 Málaga

Bureau specialized in psychotherapy and Borderline Personality Disorder

Related internship programs:

- Psychological Intervention in Personality Disorders and Psychosis

09

Methodology

This academic program offers students a different way of learning. Our methodology uses a cyclical learning approach: **Relearning**.

This teaching system is used, for example, in the most prestigious medical schools in the world, and major publications such as the **New England Journal of Medicine** have considered it to be one of the most effective.



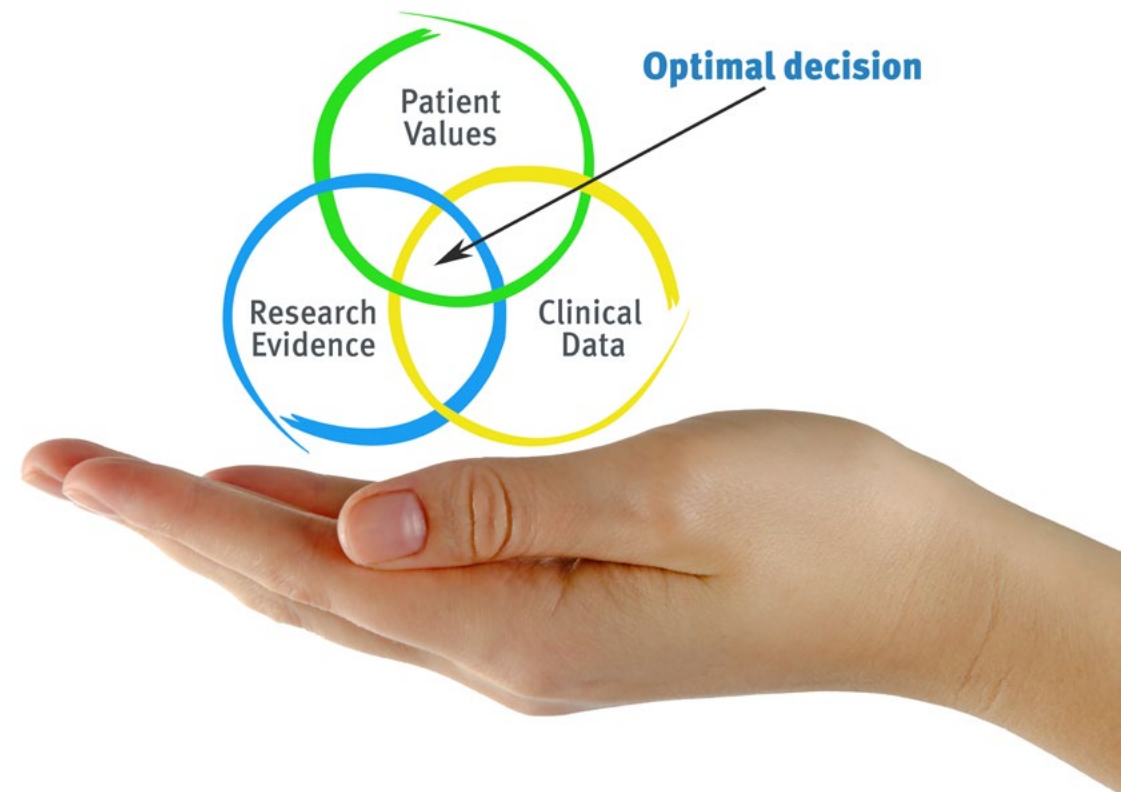
“

Discover Relearning, a system that abandons conventional linear learning, to take you through cyclical teaching systems: a way of learning that has proven to be extremely effective, especially in subjects that require memorization"

At TECH we use the Case Method

What should a professional do in a given situation? Throughout the program, students will face multiple simulated clinical cases, based on real patients, in which they will have to do research, establish hypotheses, and ultimately resolve the situation. There is an abundance of scientific evidence on the effectiveness of the method. Specialists learn better, faster, and more sustainably over time.

With TECH the psychologist experiences a way of learning that is shaking the foundations of traditional universities around the world.



According to Dr. Gérvas, the clinical case is the annotated presentation of a patient, or group of patients, which becomes a "case", an example or model that illustrates some peculiar clinical component, either because of its teaching power or because of its uniqueness or rarity. It is essential that the case is based on current professional life, trying to recreate the real conditions in the psychologist's professional practice.

“

Did you know that this method was developed in 1912, at Harvard, for law students? The case method consisted of presenting students with real-life, complex situations for them to make decisions and justify their decisions on how to solve them. In 1924, Harvard adopted it as a standard teaching method”

The effectiveness of the method is justified by four fundamental achievements:

1. Psychologists who follow this method not only master the assimilation of concepts, but also develop their mental capacity by means of exercises to evaluate real situations and apply their knowledge.
2. Learning is solidly translated into practical skills that allow the psychologist to better integrate knowledge into clinical practice.
3. Ideas and concepts are understood more efficiently, given that the example situations are based on real-life.
4. Students like to feel that the effort they put into their studies is worthwhile. This then translates into a greater interest in learning and more time dedicated to working on the course.



Relearning Methodology

At TECH we enhance the case method with the best 100% online teaching methodology available: Relearning.

Our university is the first in the world to combine the study of clinical cases with a 100% online learning system based on repetition, combining a minimum of 8 different elements in each lesson, which is a real revolution compared to the simple study and analysis of cases.

The psychologist will learn through real cases and by solving complex situations in simulated learning environments. These simulations are developed using state-of-the-art software to facilitate immersive learning.



At the forefront of world teaching, the Relearning method has managed to improve the overall satisfaction levels of professionals who complete their studies, with respect to the quality indicators of the best online university (Columbia University).

This methodology has trained more than 150,000 psychologists with unprecedented success in all clinical specialties. Our pedagogical methodology is developed in a highly competitive environment, with a university student body with a strong socioeconomic profile and an average age of 43.5 years old.

Relearning will allow you to learn with less effort and better performance, involving you more in your training, developing a critical mindset, defending arguments, and contrasting opinions: a direct equation for success.

In our program, learning is not a linear process, but rather a spiral (learn, unlearn, forget, and re-learn). Therefore, we combine each of these elements concentrically.

The overall score obtained by our learning system is 8.01, according to the highest international standards.



This program offers the best educational material, prepared with professionals in mind:



Study Material

All teaching material is produced by the specialists who teach the course, specifically for the course, so that the teaching content is highly specific and precise.

These contents are then applied to the audiovisual format, to create the TECH online working method. All this, with the latest techniques that offer high quality pieces in each and every one of the materials that are made available to the student.



Latest Techniques and Procedures on Video

TECH introduces students to the latest techniques, to the latest educational advances, to the forefront of current psychology. All of this in direct contact with students and explained in detail so as to aid their assimilation and understanding. And best of all, you can watch the videos as many times as you like.



Interactive Summaries

The TECH team presents the contents attractively and dynamically in multimedia lessons that include audio, videos, images, diagrams, and concept maps in order to reinforce knowledge.

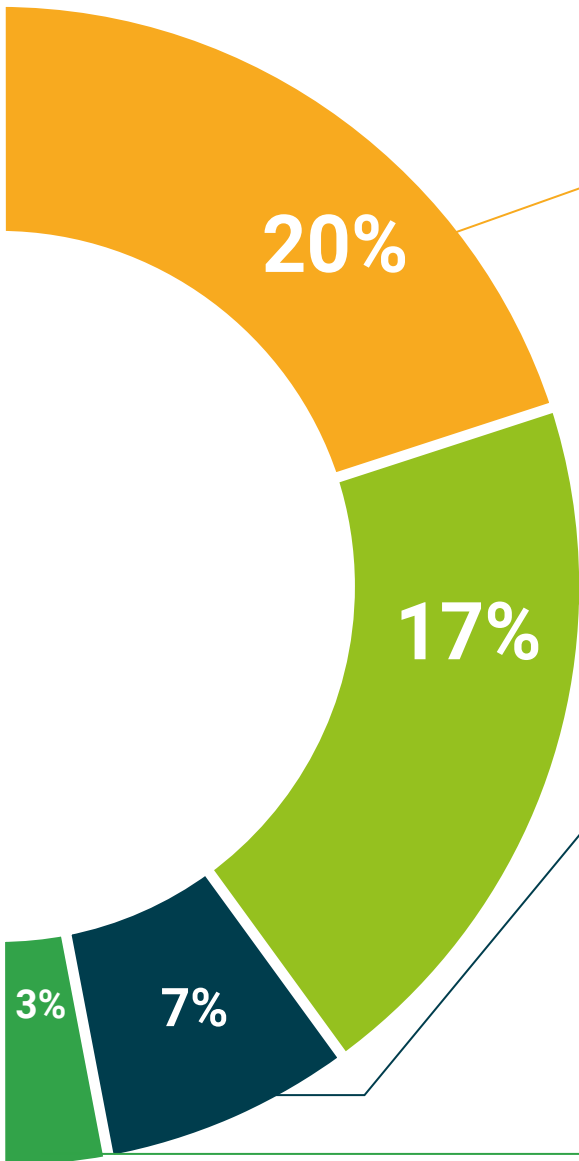
This exclusive educational system for presenting multimedia content was awarded by Microsoft as a "European Success Story".



Additional Reading

Recent articles, consensus documents and international guidelines, among others. In TECH's virtual library, students will have access to everything they need to complete their course.





Expert-Led Case Studies and Case Analysis

Effective learning ought to be contextual. Therefore, TECH presents real cases in which the expert will guide students, focusing on and solving the different situations: a clear and direct way to achieve the highest degree of understanding.



Testing & Retesting

We periodically evaluate and re-evaluate students' knowledge throughout the program, through assessment and self-assessment activities and exercises, so that they can see how they are achieving their goals.



Classes

There is scientific evidence suggesting that observing third-party experts can be useful. Learning from an Expert strengthens knowledge and memory, and generates confidence in future difficult decisions.



Quick Action Guides

TECH offers the most relevant contents of the course in the form of worksheets or quick action guides. A synthetic, practical, and effective way to help students progress in their learning.



10

Certificate

This Hybrid Professional Master's Degree in Psychological Intervention in Personality Disorders and Psychosis guarantees students, in addition to the most rigorous and up-to-date education, access to a Hybrid Professional Master's Degree diploma issued by TECH Technological University.



The image features two graduation caps against a blue sky with light clouds. One cap is black with a black tassel, and the other is black with a maroon top. The background is split into a white diagonal section and a pink section.

“

Successfully complete this program and receive your university qualification without having to travel or fill out laborious paperwork”

This **Hybrid Professional Master's Degree in Psychological Intervention in Personality Disorders and Psychosis** contains the most complete and up-to-date program on the professional and educational field.

After the student has passed the assessments, they will receive their corresponding Hybrid Professional Master's Degree diploma issued by TECH Technological University via tracked delivery*.

In addition to the diploma, students will be able to obtain an academic transcript, as well as a certificate outlining the contents of the program. In order to do so, students should contact their academic advisor, who will provide them with all the necessary information.

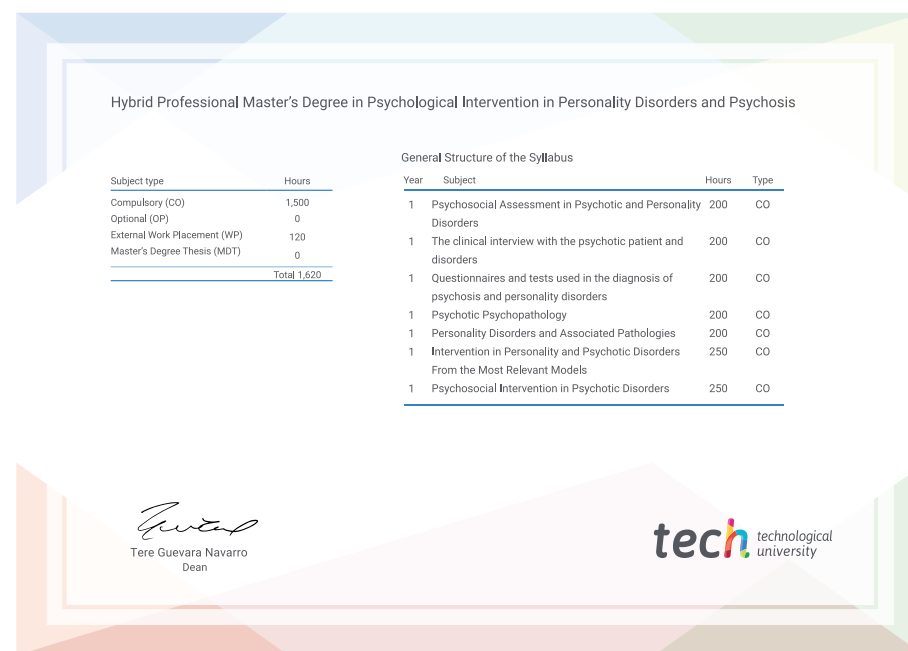
Title: **Hybrid Professional Master's Degree in Psychological Intervention in Personality Disorders and Psychosis**

Modality: **Hybrid (Online + Clinical Internship)**

Duration: **12 months**

Certificate: **TECH Technological University**

Teaching Hours: **1,620 h.**



*Apostille Convention. In the event that the student wishes to have their paper diploma issued with an apostille, TECH EDUCATION will make the necessary arrangements to obtain it, at an additional cost.

future
health confidence people
education information tutors
guarantee accreditation teaching
institutions technology learning
community commitment
personalized service innovation
knowledge presentation quality
development languages
virtual classroom

tech technological
university

Hybrid Professional Master's Degree

Psychological Intervention
in Personality Disorders
and Psychosis

Modality: Hybrid (Online + Clinical Internship)

Duration: 12 months

Certificate: TECH Technological University

Teaching Hours: 1,620 h.

Hybrid Professional Master's Degree

Psychological Intervention in Personality Disorders and Psychosis

