

Hybrid Professional Master's Degree

Forensic Psychology
and Damage Assessment



Hybrid Professional Master's Degree

Forensic Psychology and Damage Assessment

Course Modality: Hybrid (Online + Clinical Internship)

Duration: 12 months

Certificate: TECH Technological University

Teaching Hours: 1,620 h.

Website: www.techtute.com/us/psychology/hybrid-professional-master-degree/hybrid-professional-master-degree-forensic-psychology-damage-assessment

Index

01

Introduction

p. 4

02

Why Study this Hybrid
Professional Master's Degree?

p. 8

03

Objectives

p. 12

04

Skills

p. 18

05

Educational Plan

p. 22

06

Clinical Internship

p. 28

07

Where Can I Do the Clinical
Internship?

p. 34

08

Methodology

p. 38

09

Certificate

p. 46

01

Introduction

One of the branches of psychology that has experienced the greatest growth in recent years has been forensic psychology and damage assessment. Its application in the legal field and the importance of this specialty in its investigations, places it among the most demanded in the labor market. Its development has been motivated, among other factors, by technological evolution, which has allowed the establishment of more accurate and infallible techniques and protocols. This is the reason for the creation of this program, aimed at providing the specialist with all the tools that will allow them to keep up to date with the latest developments in this field, not only through the most extensive syllabus, but also through their active participation in an internship in a psychological center of reference in the national panorama.





“

TECH offers you the most comprehensive syllabus in Forensic Psychology and gives you the opportunity to be part of a team of active specialists through an Internship Program of 120 hours”

Advice to judges and courts by specialists in Forensic Psychology and damage assessment is essential in any legal process involving people. Cases of physical and psychological abuse, gender violence, homicides, etc., all involve a guilty party and a victim and knowing their profiles from the point of view of mental health is fundamental and totally discriminatory when passing a sentence. That is why the profile specialized in this branch of psychology is increasingly in demand.

On the other hand, the fact that this is a profession that has evolved a lot in recent decades requires these specialists to be constantly updating their knowledge, which sometimes, due to the amount of information that is handled in this regard, can be a complex task to carry out. That is why TECH has designed this Hybrid Professional Master's Degree in Forensic Psychology and Damage Assessment, a comprehensive, theoretical and practical program, which will become the main asset of the graduate to learn the latest developments in this sector and to hone their skills as a professional specializing in this area of psychology.

This program includes 1500 hours of the best 100% online content, designed based on the pedagogical methodology of *Relearning* with which TECH is a pioneer and following the guidelines of a team of experts. Additionally, the graduate will have access, from the beginning of the course, to the entire syllabus that includes additional material to expand on each section.

After completing the theoretical period, it will be time to face the working world with a practical stay of 120 hours in a clinic of reference in the national panorama. Here you will actively participate in the psychological expertise of patients, and you will be able to perfect your skills and abilities side by side with professionals in Forensic Psychology with years of experience.

This **Hybrid Professional Master's Degree in Forensic Psychology and Damage Assessment** contains the most complete and up-to-date program on the market. The most important features include:

- ♦ Development of more than 100 clinical cases presented by Psychology professionals
- ♦ The graphic, schematic, and practical contents with which they are created, provide scientific and practical information on the disciplines that are essential for professional practice
- ♦ Comprehensive systematized action plans for the management of patients with complex psychological conditions
- ♦ Presentation of practical workshops on therapeutic techniques for different patients
- ♦ An algorithm-based interactive learning system for decision-making in the clinical situations presented throughout the course
- ♦ Clinical practice guidelines on the approach to different disorders
- ♦ All of this will be complemented by theoretical lessons, questions to the expert, debate forums on controversial topics, and individual reflection assignments
- ♦ Content that is accessible from any fixed or portable device with an Internet connection
- ♦ Furthermore, you will be able to carry out a clinical internship in one of the best medical centers



Access 100% online comprehensive content on psychometric testing and delve into the different types of questionnaires depending on the forensic issue"



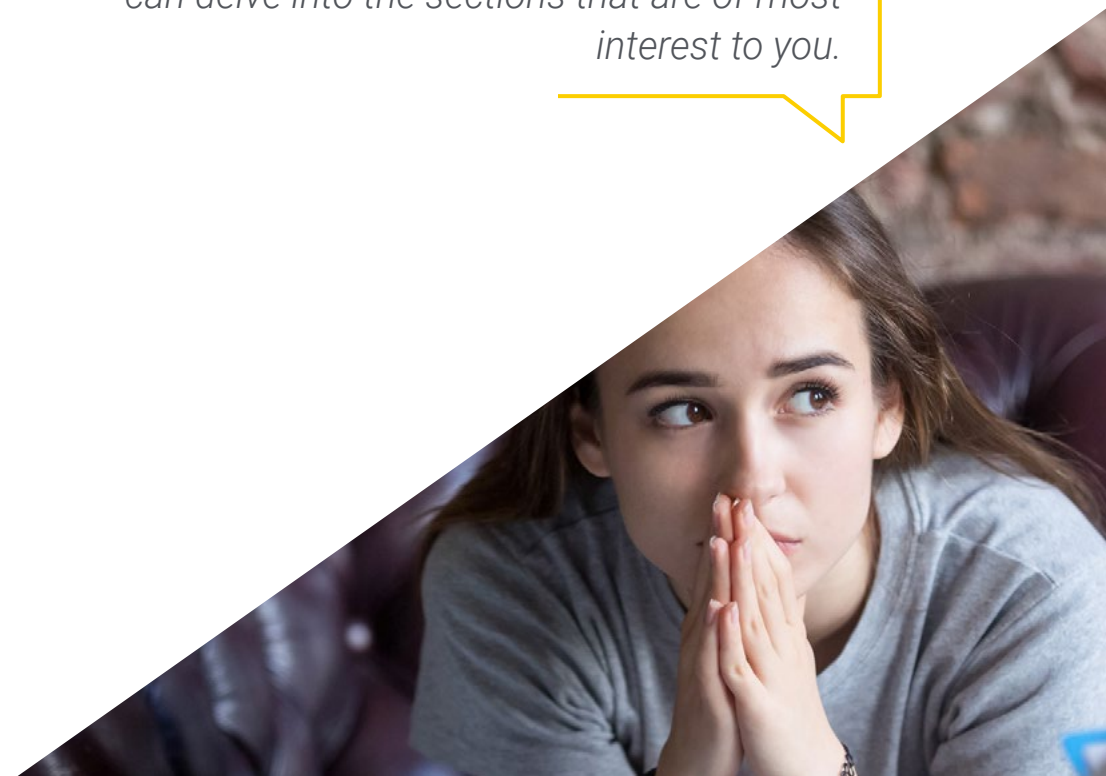
Knowing in detail the latest clinical advances in forensic psychological expertise will allow you to have a broader and updated vision when participating in an injury identification process”

In this proposal of a Professional Master's Degree, of professionalizing character and hybrid learning modality, the program is aimed at updating Psychology professionals who develop their functions in a specialized center in Forensic Psychology and Damage Assessment practices, and who require a high level of qualification. The contents are based on the latest scientific evidence, and oriented in a didactic way to integrate theoretical knowledge in the practice of psychology, and the theoretical-practical elements will facilitate the updating of knowledge and allow decision making in patient management.

Thanks to its multimedia content elaborated with the latest educational technology, they will allow the Psychology professional to obtain a situated and contextual learning, that is to say, a simulated environment that will provide an immersive learning programmed to train in real situations. This program is designed around Problem-Based Learning, whereby the professional must try to solve the different professional practice situations that arise throughout the program. For this purpose, the student will be assisted by an innovative interactive video system created by renowned experts.

You will be able to perfect your professional skills side by side with psychology specialists with decades of experience in the assessment and evaluation of harm to victims in different cases.

During the theoretical period, you will have access to 1500 hours of content designed exclusively for this program, which includes detailed videos and research articles, so you can delve into the sections that are of most interest to you.



02

Why Study this Hybrid Professional Master's Degree?

Forensic psychologists play an increasingly active role in judicial processes, as they determine the veracity of a testimony and the cognitive abilities of a defendant or evaluate the injuries of a criminal act in a victim. For this reason, it is necessary to master the theoretical concepts surrounding expert procedures, as well as the different techniques, questionnaires, scales and tests used by forensic psychology professionals. Given this reality, TECH has created this Hybrid Professional Master's Degree, which in its 100% online theoretical framework delves into the abuse, the evaluation of physical damage or psychological assessment in judicial expertise.



“

TECH gives you the opportunity to enter a unique program that brings you closer to the daily work of real professionals in forensic psychology”

1. Updating from the latest technology available

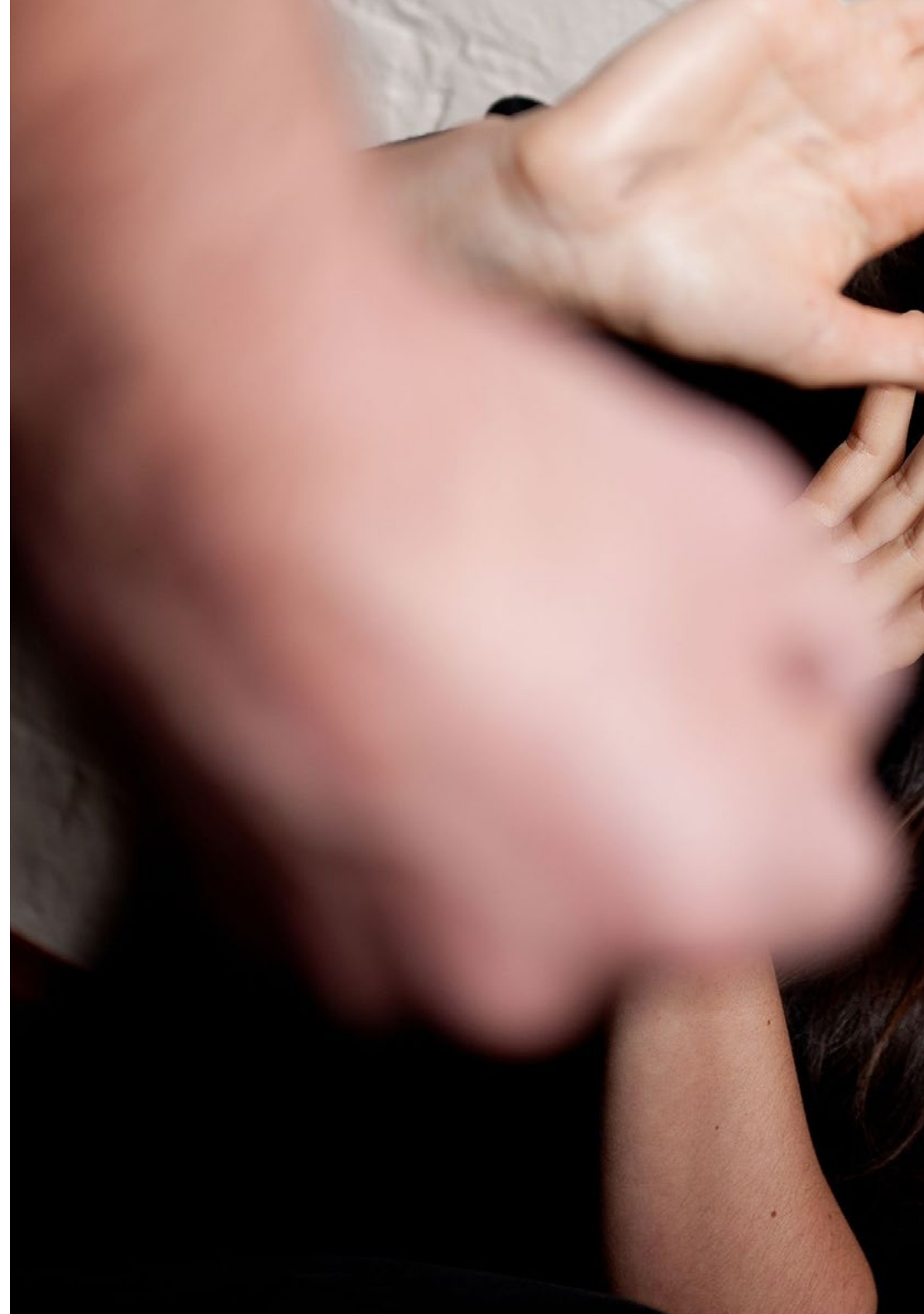
In recent years, the work carried out by forensic psychologists has achieved great value, given the enlightening results obtained in judicial processes, with the application of precise diagnostic techniques. That is why in this program, TECH brings the graduate closer to the latest information on the judicial expertise and the methods used for the realization of valuations.

2. Gaining In-Depth Knowledge from the Experience of Top Professionals

In this 12-month academic course, students will be accompanied by a teaching team specialized in Forensic Psychology and Damage Assessment, which will facilitate the achievement of their goals in this field. These goals will also be developed in a practical way in a clinic specialized in this area. An environment where you will be tutored by an expert in the field that is aware of the most effective procedures and techniques for the approach of the judicial expertise, from the perspective of the forensic psychologist.

3. Entering First-Class Clinical Environments

In order to offer all students a top level and quality education, TECH carries out a rigorous selection process, both of the teachers who teach the theoretical phase, as well as the clinical centers, where the practical stay of 3 weeks duration will take place. In this way, you will be introduced to a university program, which provides a broad vision of Forensic Psychology and Damage Assessment.





4. Combining the Best Theory with State-of-the-Art Practice

The academic market is plagued by teaching programs that are poorly adapted to the daily work of the specialist and that require long teaching hours, often not very compatible with personal and professional life. TECH offers a new 100% practical learning model, that allows you to get in front of state-of-the-art procedures in the field of Forensic Psychology and Damage Assessment and, best of all, to professional practice, and in only 3 weeks.

The current market has educational programs that are poorly adapted to the real needs of professionals, and which, moreover, prevent them from combining a university education with their daily responsibilities. For this reason, TECH offers a new learning model that perfectly combines an advanced theoretical framework with the most intensive classroom practice. All this in 1,620 hours of high-level learning.

5. Expanding the Boundaries of Knowledge

The professional who enters this university program will have the possibility of being able to carry out face-to-face practices in clinical centers of national and international importance. This gives them the opportunity to work side by side with psychologists specialized in the forensic field, and to acquire from them a learning that will allow them to update their knowledge and broaden their skills.



*You will have full practical immersion
at the center of your choice"*

03

Objectives

When TECH and its group of experts in Psychology designed this Hybrid Professional Master's Degree's, they did so exclusively with the professional improvement of the graduate in mind. That is why the objective of this program is that the specialist finds in it the tools that allow them to expand, update and polish their knowledge in the field of Forensic Psychology and damage assessment. In this way, you will be able to practice the profession knowing and managing the latest protocols and techniques based on the most effective clinical advances.



“

During your stay in the clinic, you will be able to put into practice the concepts developed throughout the program with real patients and you will be guided by experts in Psychology committed to your professional growth”



General Objective

- This Hybrid Professional Master's Degree in Forensic Psychology and Damage Assessment will give the specialist the keys to expand their knowledge of Psychology applied to the legal field, focusing on the forensic sector and the assessment of the different cases that may be presented throughout their careers. All this will positively affect the improvement of your skills and abilities in this field, encouraging your professional growth through the best theoretical and practical basis offered by TECH and its collaborating centers



Being able to expand and update your knowledge in Forensic Psychology will help you to act with greater security and guarantee when carrying out a damage assessment with a victim"





Specific Objectives

Module 1. Forensic Psychology

- ♦ Understand the history of psychology and its arrival in the courts
- ♦ Understand how the process undergoes a radical behavioral shift to the cognitive-behavioral one that is maintained today
- ♦ Infer the division of judicial psychology and the differences with criminal psychology, which is closely related to forensic psychology
- ♦ Review the phases through which forensic psychology has passed at the national level
- ♦ Delve into the law of the minor, the APA, and the different jurisprudences associated with forensic psychology

Module 2. Children and Adolescents in Court

- ♦ Learn how to interview a child in custody situation
- ♦ Understand how to interview minors who are victims of mistreatment or sexual abuse
- ♦ Analyze the most relevant aspects of child issues, custody assessment and sexual assault
- ♦ Analyze adolescent psychology and criminal careers, as well as the application of the penal code at early ages of growth
- ♦ Interpret psychometric tests used by specialists
- ♦ Know the most frequent diseases associated with sexual abuse

Module 3. Abuse

- ♦ Define the concept of maltreatment and provide an introduction to maltreatment expertise, addressing the characteristics of the maltreating man and the proposed classifications of maltreatment profiles
- ♦ Determine the factors influencing male batterer's violence, as well as their treatment
- ♦ Define and deepen the concept and types of victims
- ♦ Understand the phases of victimization, as well as epidemiological data
- ♦ Understand the typology of existing maltreatment and its psychological, social and physical consequences
- ♦ Learn how to assess credibility in cases of gender-based violence and in cases of child sexual abuse

Module 4. Different Personalities Focused on the Legal Field

- ♦ Review the different theories that have studied behavior through personality
- ♦ Classify the different criminal profiles according to their degree of psychopathy
- ♦ Determine the legal implications of the psychopathic personality
- ♦ Define the types of sexual offenders according to the classifications proposed by different authors throughout the history. Define the etiology of sadistic personality disorder and its study and differentiation between it, psychopathy and antisocial disorder

Module 5. Mental Illness and Old Age

- ♦ Clarify the concept of dementia and diagnostic criteria, as well as its epidemiology, etiology and treatments
- ♦ Understand the classifications of amnesias discerning between abilities and deficits in amnesic disorder
- ♦ Perform a historical approach in mood disorders through explanatory models
- ♦ Understand the systematics of cognitive assessment in the elderly and the instruments or scales for mental assessment
- ♦ Determine the forensic repercussions of dementias, mood disorders and dissociative disorders

Module 6. Psychometric Tests

- ♦ Deepen into the CUIDA questionnaire by reviewing the data and the history of the questionnaire, as well as the scales it measures and its reliability and validity
- ♦ Delve into the Plutchik questionnaire as a valid and reliable tool to measure impulsivity, as well as its applications in psychology
- ♦ Understand the PAI psychopathological screening questionnaire and study the different types of scales that compose it

Module 7. Judicial Expertise- Psychological Assessment

- ♦ Review the history of forensic psychology and its applications in the clinical and experimental setting
- ♦ Determine the limits of intervention and admissibility of expert reports
- ♦ Understand the problem of causality and the risk and protective factors in psychological injury
- ♦ Identify the emotional sequelae in cases of child sexual abuse and gender violence



Module 8. Judicial Psychology - Legal Approach to Concepts

- ♦ Know the instruments of evaluation in cases of custody and guardianship of minors
- ♦ Understand the work methodology used by psychologists in forensic-medical clinics and know the most frequent types of requests
- ♦ Study juvenile criminal law and group juvenile delinquency
- ♦ Define the role of the psychologist throughout history
- ♦ Delve into the different phases in specialized psychological assistance
- ♦ Learn about the problematic behaviors associated with delinquent behavior by approaching the expertise of aggressors
- ♦ Differentiate the manifestations of psychological violence and anticipate the most frequent consequences of mistreatment by carrying out a correct expert assessment
- ♦ Delve into sexual aggression by establishing the degree of prior knowledge and relationship between aggressor and victim

Module 9. Judicial Expertise - Physical Damage Assessment

- ♦ Review the legal foundations of damages in the history of the personal injury assessment
- ♦ Study the community legislation and medical assessment of bodily injury, as well as the scales used
- ♦ Classify the scales according to their scope of application, the nature of the sequels contemplated or the form of scoring. Define the medical-legal framework of injuries and their legal classification
- ♦ Study the reparation of the damage in cases of victims of terrorism or armed gangs and victims of violent crimes or crimes against sexual freedom
- ♦ Establish the qualities of the personal injury appraisal report, as well as its scope of application, addressee and formal aspects

04 Skills

This Hybrid Professional Master's Degree's in Forensic Psychology and Damage Assessment has been designed in such a way as to guarantee, after completing the entire theoretical and practical period, the improvement of the basic skills of the psychological profession in the field of forensic psychology and damage assessment. The graduate will be the protagonist of an evolutionary, gradual and natural professional growth, and will achieve, in only one year, the skills and abilities that define the best profile of a psychologist specialized in this area.



“

This program focuses especially on the legal process with adolescents. So that you can have a broad vision based on the latest developments in the field of psychology”



General Skills

- Possess and understand the knowledge used in Forensic Psychology techniques
- Apply the acquired knowledge to the usual practice of cases
- Understand the complexity of psychology, as well as its application in the legal field
- Know the different topics covered by Forensic Psychology and the information that will allow them to carry out a study according to the case presented





Specific Skills

- Know what forensic psychology is and its impact on the world of law
- Understand the psychological evolution of the different developmental stages, as well as their relationship with forensic psychology in various topics of interest
- Acquire an in-depth knowledge of adolescence and the legal process
- Acquire psychological bases and theories for the explanation of gender violence and sexual aggressions among adults
- Learn the different personality traits and their implication in criminal cases
- Learn psychopathologies and the psychological process of aging
- Apply in a practical manner the different psychometric tests used in the field of forensic psychology
- Learn judicial expertise in forensic psychology, as well as its development in courts



You will learn first-hand about the reality of work in the area, in a demanding and rewarding environment”

05

Educational Plan

In order to create a complete program that will help graduates to update and expand their knowledge, TECH and its team of experts have based the structure of this program on two fundamental pillars. On the one hand, the most comprehensive and innovative content in the sector, selected by the teaching team and adapted to the Relearning pedagogical methodology with which this academic center is a pioneer. And on the other hand, the best additional material, presented in different formats and oriented to allow the specialist to delve into the sections he considers most important or interesting for the practice of his profession. All this will be available from the beginning of the course and can be downloaded to any device with an Internet connection, so that you can consult it whenever you want and need it.



“

This program focuses especially on the legal process with adolescents. So that you can have a broad vision based on the latest developments in the field of psychology”

Module 1. Forensic Psychology

- 1.1. Introduction to the Forensic Psychology
- 1.2. Forensic Psychology in Spain

Module 2. Children and Adolescents in Court

- 2.1. Infancy and Forensic Psychology
 - 2.1.1. Interviewing Minors
 - 2.1.2. Contested Custody and Guardianship Evaluation
 - 2.1.3. Sexual Assault in Children
 - 2.1.4. Sexual Assault Assessment
 - 2.1.5. Risk Factors for Delinquency
 - 2.1.6. Psychopathic Disorders Associated with Delinquency
 - 2.1.7. Assessment of Violent Behavior

Module 3. Abuse

- 3.1. The Abusive Man
- 3.2. The Victim
- 3.3. The Dynamics of the Abusive Relationship
- 3.4. Sexual Aggressions
- 3.5. SALS (*Sexual Abuse Legitimacy*) Scale and the Credibility of the Parties
- 3.6. Impulse Control Disorders
- 3.7. Personality Disorders

Module 4. Different Personalities Focused on the Legal Field

- 4.1. Personality Theories:
 - 4.1.1. Psychoanalytic Theory
 - 4.1.2. Self-Concept Theory
 - 4.1.3. Trait Theory
 - 4.1.4. Social Theories
 - 4.1.5. Eysencks Broad Trait Theory
 - 4.1.6. Millon's Theory, Diagnoses and Violent Personality

- 4.2. Psychopathic Personality
 - 4.2.1. Psychopathy
 - 4.2.2. Primary Psychopath
 - 4.2.3. Anticipatory Anxiety
 - 4.2.4. Consciousness Learning
 - 4.2.5. Empathy and Awareness
 - 4.2.6. Moral Reasoning
 - 4.2.7. Secondary Psychopathy
 - 4.2.8. Recidivism Between Primary and Secondary
- 4.3. Types of Sex Offenders
- 4.4. Marshalls Theory and the Etiology of Sexual Delinquency
- 4.5. Sadistic Personality Disorder

Module 5. Mental Illness and Old Age

- 5.1. Dementia
- 5.2. Amnesic Disorder
- 5.3. Mood Disorder
- 5.4. Assessment of Mental Impairment and Intelligence
- 5.5. Concept of Imputability

Module 6. Psychometric Tests

- 6.1. CUIDA Questionnaire
- 6.2. Questionnaire on Impulsivity: Plutchik
- 6.3. Questionnaire for Psychopathological Screening PAI
- 6.4. MMSE Questionnaire for Dementia Assessment

Module 7. Judicial Expertise- Psychological Assessment

- 7.1. Forensic Psychological Expertise
 - 7.1.1. Identifying Injuries
- 7.2. Identification of Sequelae
- 7.3. Forensic Psychological Reports
- 7.4. BOE Interpretation to Assess Psychological Damage
- 7.5. Quantification of Lesions
- 7.6. Quantification of Sequelae
- 7.7. Valuation Consequential Damage

Module 8. Judicial Psychology- Legal Approach to Concepts

- 8.1. Psychologists Assigned to the Courts
 - 8.1.1. Introduction
 - 8.1.2. Family Psychologists
 - 8.1.3. Psychologists from the Forensic Medical Clinics
 - 8.1.4. Child Psychologists
 - 8.1.5. Penitentiary Surveillance Psychologists
 - 8.1.6. Psychologists in Victim Assistance
- 8.2. The Judicial Psychological Report of the Victim
 - 8.2.1. Introduction to the Expert Report
 - 8.2.2. Conducting Interviews to Obtain Data
 - 8.2.3. Types of Interviews
 - 8.2.4. Conditions for Conducting the Interview
 - 8.2.5. Basic Aspects of the Victims Psychological Expert Report
 - 8.2.6. Specific Characteristic of the Victims Psychological Expert Report
 - 8.2.7. Psychological Damage to the Victim
 - 8.2.8. Psychopathology and Criminal Victimization
- 8.3. The Psychological Expert Report of the Offender
 - 8.3.1. Introduction to the Offenders Psychological Expert Report
 - 8.3.2. Psychological Studies
 - 8.3.3. Study of Personality
 - 8.3.4. Study of intelligence
 - 8.3.5. Drafting the Expert Report
 - 8.3.6. Offenses

- 8.4. Essential Aspects in Forensic Psychology
 - 8.4.1. Violent Personality and Psychopathy
 - 8.4.2. Social and Biological Bases of Violence
 - 8.4.3. The Violent Personality
 - 8.4.4. Psychopathy: Raine and Hare's Theory
 - 8.4.5. Sexual Assault
 - 8.4.6. Types of Offenders in Forensic Psychology
 - 8.4.7. Sexual Assault in Children
 - 8.4.8. Etiology of Sexual Delinquency: Marshall's Theory
 - 8.4.9. Abuse in Forensic Psychology
 - 8.4.10. The Abuser
 - 8.4.11. The Victim
 - 8.4.12. Dynamics of the Abusive Relationship
 - 8.4.13. Credibility of Testimony
 - 8.4.14. Criteria-Based Content Analysis: CBCA
 - 8.4.15. System for Analyzing the Validity of Statements (SVA)
 - 8.4.16. Interviewing Minors
 - 8.4.17. The Credibility of Testimony in the Case of Adults
 - 8.4.18. Addictions and Their Legal Repercussions
 - 8.4.19. Considerations on the Criminal Treatment of Drug Addiction
 - 8.4.20. Substance Induced Behavioral and Conduct Disorders
 - 8.4.21. The Psychological Profile of the Substance User
 - 8.4.22. The Evaluation of a Drug Addict From an Experts Point of View
 - 8.4.23. Accidents, Impairment and Disability
 - 8.4.24. Interview With the Alleged Incapacitated Person Due to Cognitive Deficit
 - 8.4.25. Expert Appraisals Due to External Causes: Aggressions, Traffic and Labor Accidents (Tce)
 - 8.4.26. Psychoneurological Assessment of Head Injury Basic Intervention Methodology
 - 8.4.27. Evolution of TCEs at the Forensic Level in General Terms Over Time
- 8.5. Specific Assessment Techniques in Forensic Psychology
 - 8.5.1. Introduction
 - 8.5.2. The Interview in Forensic Psychology
 - 8.5.3. The Evaluation in Guardianship and Imputed Custody
 - 8.5.4. Assessment of Violent Behavior
 - 8.5.5. Interviews
 - 8.5.6. Scales
 - 8.5.7. Self-reports
 - 8.5.8. Assessment of Sex Offenders
 - 8.5.9. Assessment of Intelligence and Mental Impairment
 - 8.5.10. Assessment of Victims of Assault
 - 8.5.11. Assessment of Drug Addiction
- 8.6. Mental Disorders and Liability
 - 8.6.1. Imputability
 - 8.6.2. Relationship between Mental Disorders and Forensic Implication
 - 8.6.3. Major or Mild Neurocognitive Impairment due to Alzheimer's Disease
 - 8.6.4. Spectrum of Schizophrenia and Other Psychotic Disorders
 - 8.6.5. Major Depression Disorder
 - 8.6.6. Post-Traumatic Stress Disorder
 - 8.6.7. Obsessive Compulsive Disorder
 - 8.6.8. Somatic Symptom Disorders
 - 8.6.9. Dissociative Identity Disorder
 - 8.6.10. Personality Disorders
- 8.7. National Legislation



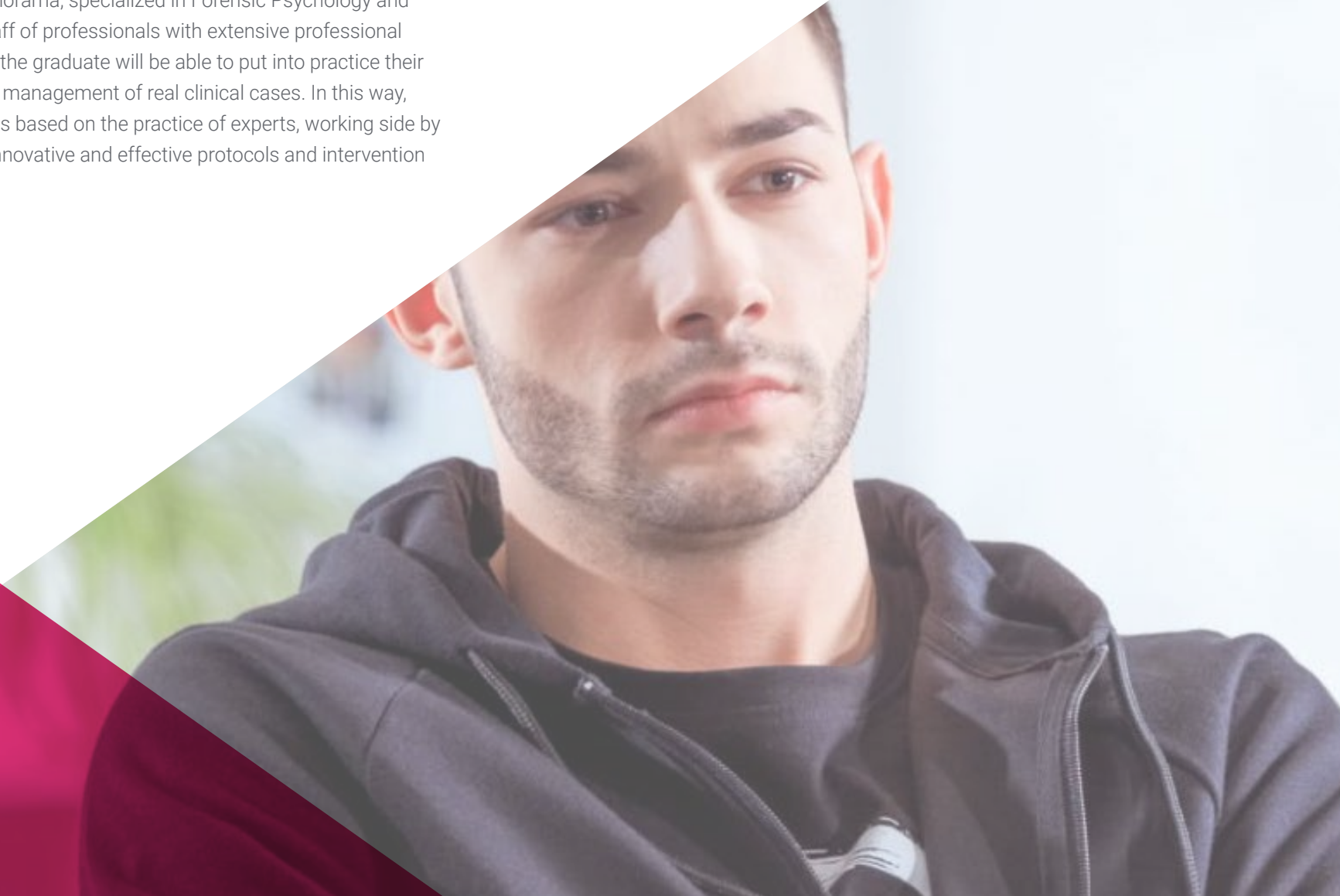
Module 9. Judicial Expertise - Physical Damage Assessment

- 9.1. Medical Assessment of Damage to the Person
 - 9.1.1. Damage Repair
- 9.2. Psychological Assessment
 - 9.2.1. Deficiency
 - 9.2.2. Disability
 - 9.2.3. Handicap
- 9.3. Medical and Psychological Evaluation
 - 9.3.1. Other Criminal Damages
- 9.4. Medical and Psychological Evaluation
 - 9.4.1. Other Civil Damages (I)
- 9.5. Economic and Patrimonial Damages
 - 9.5.1. Assessment
 - 9.5.2. Understanding the Official State Gazette (BOE).
- 9.6. Medical Assessment
 - 9.6.1. Other Civil Damages (II)
- 9.7. Medical Assessment
 - 9.7.1. Occupational Damages
 - 9.7.1.1. Classification of Accidents
 - 9.7.1.2. Occupational Risk Prevention
 - 9.7.1.3. Negligence
- 9.8. The Medical Expert's Mission in Personal Injury Appraisal
 - 9.8.1. Evaluation Guide
 - 9.8.2. BOE
- 9.9. Methodology in the Valuation of Damage
 - 9.9.1. Evaluation Guide
 - 9.9.2. BOE
- 9.10. The Medical Report in the Valuation of Damage

06

Clinical Internship

The completion of this Hybrid Professional Master's Degree will take place in a prestigious clinic in the national panorama, specialized in Forensic Psychology and damage assessment and with a staff of professionals with extensive professional experience in the sector. Therefore, the graduate will be able to put into practice their skills by actively participating in the management of real clinical cases. In this way, they will be able to perfect their skills based on the practice of experts, working side by side with them and with the most innovative and effective protocols and intervention techniques in psychology.



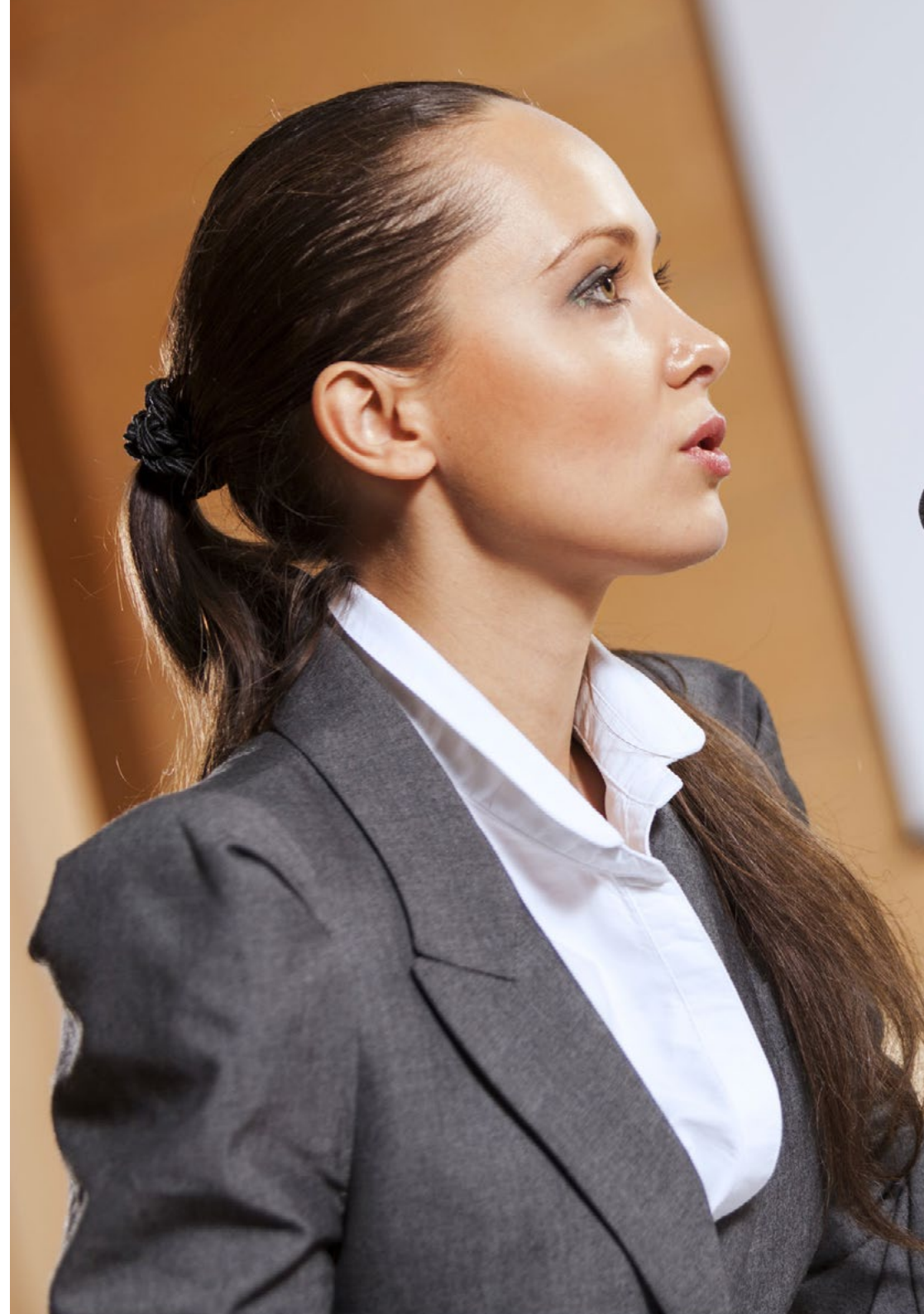
“

You will have at your disposal an internship tutor who will ensure your safety and that of your patient in all the interventions in which you participate”

The Internship Program consists of a practical stay in a prestigious center, a 3-week period, from Monday to Friday with 8 consecutive hours of work with an attending specialist. This experience will allow the graduate to know in detail the day to day of the profession and to work in real situations alongside an expert and reference team within the area of Forensic Psychology.

In this training proposal, completely practical in nature, the activities are aimed at developing and perfecting the skills necessary for the provision of psychological care in areas and conditions that require a high level of qualification, and which are oriented to the specific training for the exercise of the activity, in an environment of safety for the individual and high professional performance.

The practical part will be carried out with the active participation of the student performing the activities and procedures of each area of skill (learning to learn and learning to do), with the accompaniment and guidance of teachers and other fellow trainees who facilitate teamwork and multidisciplinary integration as transversal skills for the praxis of Forensics psychology (learning to be and learning to relate).





The procedures described below will be the basis of the practical part of the training, and their implementation will be subject to the center's own availability and workload, the proposed activities being the following:

Module	Practical Activity
Assessment of minors in court	Conducting interviews with minors
	Evaluating the precise conditions for the disputed custody and guardianship
	Assess sexual assaults in an appropriate manner, and from the point of view of the psychologist
	Assessing violent behavior of minors in the courts
Detection of cases of abuse	Evaluate the profile of a male abuser, applying methods used in Psychology
	Detect the dynamics of the abusive relationship through different techniques
	Applying the SALS (Sexual Abuse Legitimacy), scale, to determine the credibility of the parties involved in the case of abuse
	Detection of impulse control and personality disorders
Psychometric Tests	Conducting the CUIDA questionnaire for the evaluation of adopters
	Apply the impulsivity questionnaire and evaluate the suicide risk scale
	Perform the PAI psychopathological screening, for the comprehensive assessment of psychopathology in adults
	Carry out the MMSE questionnaire for the assessment of dementia
Judicial Expertise-Psychological Assessment	Identify injuries through the forensic psychological assessment
	Identify the after-effects of the assaulted person
	Collaborate in the realization of forensic psychological report
	Evaluate the emergent damage, from the point of view of the psychologist

Civil Liability Insurance

This institution's main concern is to guarantee the safety of the trainees and other collaborating agents involved in the internship process at the company. Among the measures dedicated to achieve this is the response to any incident that may occur during the entire teaching-learning process.

To this end, this entity commits to purchasing a civil liability insurance policy to cover any eventuality that may arise during the course of the internship at the center.

This liability policy for interns will have broad coverage and will be taken out prior to the start of the Internship Program period. That way professionals will not have to worry in case of having to face an unexpected situation and will be covered until the end of the internship program at the center.



General Conditions of the Internship Program

The general terms and conditions of the internship agreement for the program are as follows:

1. TUTOR: During the Hybrid Professional Master's Degree, students will be assigned with two tutors who will accompany them throughout the process, answering any doubts and questions that may arise. On the one hand, there will be a professional tutor belonging to the internship center who will have the purpose of guiding and supporting the student at all times. On the other hand, they will also be assigned with an academic tutor whose mission will be to coordinate and help the students during the whole process, solving doubts and facilitating everything they may need. In this way, the student will be accompanied and will be able to discuss any doubts that may arise, both clinical and academic.

2. DURATION: The internship program will have a duration of three continuous weeks, in 8-hour days, 5 days a week. The days of attendance and the schedule will be the responsibility of the center and the professional will be informed well in advance so that they can make the appropriate arrangements.

3. ABSENCE: If the students does not show up on the start date of the Hybrid Professional Master's Degree, they will lose the right to it, without the possibility of reimbursement or change of dates. Absence for more than two days from the internship, without justification or a medical reason, will result in the professional's withdrawal from the internship, therefore, automatic termination of the internship. Any problems that may arise during the course of the internship must be urgently reported to the academic tutor.

4. CERTIFICATION: Professionals who pass the Hybrid Professional Master's Degree will receive a certificate accrediting their stay at the center.

5. EMPLOYMENT RELATIONSHIP: the Hybrid Professional Master's Degree shall not constitute an employment relationship of any kind.

6. PRIOR EDUCATION: Some centers may require a certificate of prior education for the Hybrid Professional Master's Degree. In these cases, it will be necessary to submit it to the TECH internship department so that the assignment of the chosen center can be confirmed.

7. DOES NOT INCLUDE: The Hybrid Professional Master's Degree will not include any element not described in the present conditions. Therefore, it does not include accommodation, transportation to the city where the internship takes place, visas or any other items not listed.

However, students may consult with their academic tutor for any questions or recommendations in this regard. The academic tutor will provide the student with all the necessary information to facilitate the procedures in any case.

07

Where Can I Do the Clinical Internship?

TECH chooses all collaborating centers for this type of program based on a series of quality requirements, with the aim of guaranteeing the graduate a practical stay that adapts to their academic and professional needs. Based on this, the collaboration with entities from all over the world, which are endorsed by their international prestige and experience in the sector, arises. Additionally, these institutions are committed to the growth of specialists, so that graduates will find in them a unique opportunity to improve their skills and abilities in a work environment that will allow them to continue developing in the field of Forensic Psychology.





“

During the internship you will be able to evaluate different psychological profiles and delve into the characteristics of each of them through your own experience”

tech 36 | Where can I Do the Clinical Internship?



The student will be able to complete the practical part of this Hybrid Professional Master's Degree at the following centers:



Psychology

Clínica Adna

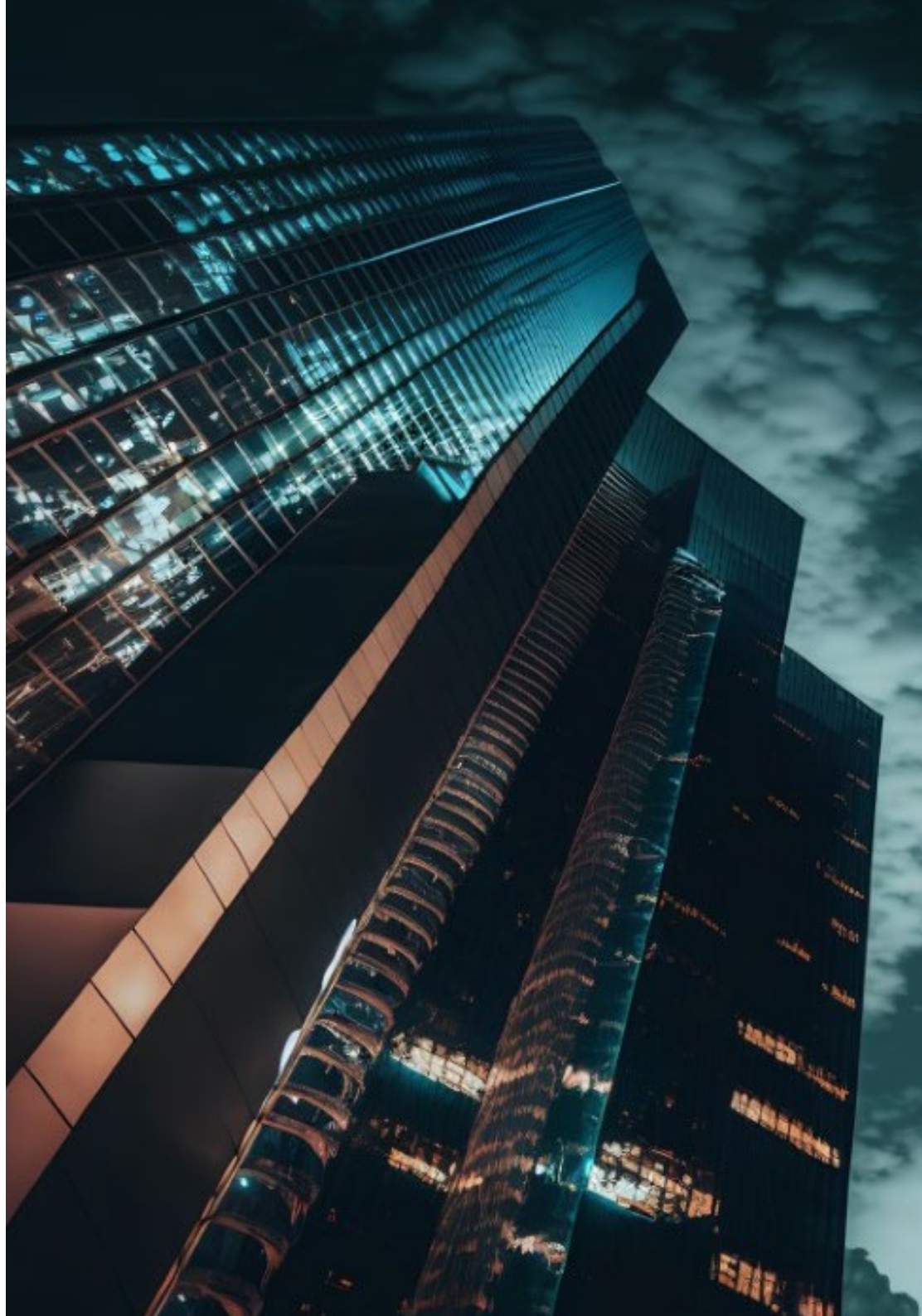
Country	City
Spain	Madrid

Address: C. de Rodríguez San Pedro, 32,
28015 Madrid

Psychological and Aesthetic Medicine Center

Related internship programs:

- Clinical Child and Adolescent Psychology
- Forensic Psychology and Damage Assessment





“

Take advantage of this opportunity to surround yourself with expert professionals and benefit from their work methodology”

08

Methodology

This academic program offers students a different way of learning. Our methodology uses a cyclical learning approach: **Relearning**.

This teaching system is used, for example, in the most prestigious medical schools in the world, and major publications such as the **New England Journal of Medicine** have considered it to be one of the most effective.



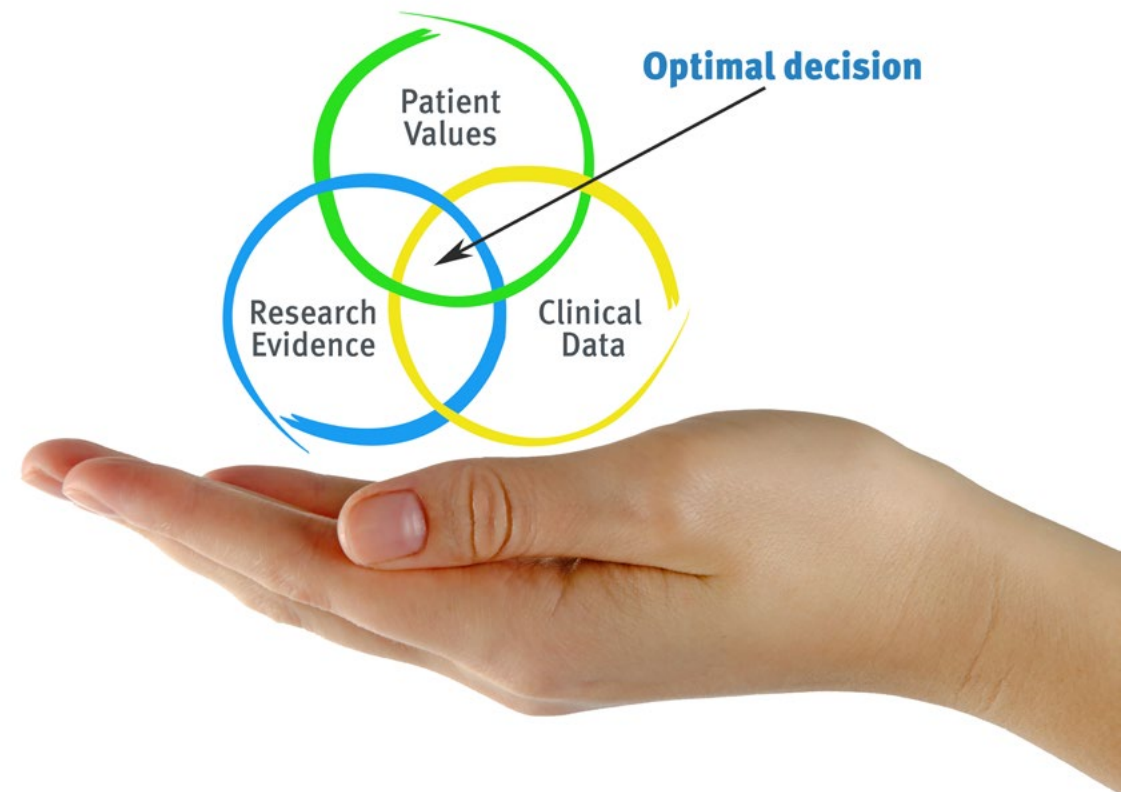
“

Discover Relearning, a system that abandons conventional linear learning, to take you through cyclical teaching systems: a way of learning that has proven to be extremely effective, especially in subjects that require memorization"

At TECH we use the Case Method

What should a professional do in a given situation? Throughout the program, students will face multiple simulated clinical cases, based on real patients, in which they will have to do research, establish hypotheses, and ultimately resolve the situation. There is an abundance of scientific evidence on the effectiveness of the method. Specialists learn better, faster, and more sustainably over time.

With TECH the psychologist experiences a way of learning that is shaking the foundations of traditional universities around the world.



According to Dr. Gérvas, the clinical case is the annotated presentation of a patient, or group of patients, which becomes a "case", an example or model that illustrates some peculiar clinical component, either because of its teaching power or because of its uniqueness or rarity. It is essential that the case is based on current professional life, trying to recreate the real conditions in the psychologist's professional practice.

“

Did you know that this method was developed in 1912, at Harvard, for law students? The case method consisted of presenting students with real-life, complex situations for them to make decisions and justify their decisions on how to solve them. In 1924, Harvard adopted it as a standard teaching method”

The effectiveness of the method is justified by four fundamental achievements:

1. Psychologists who follow this method not only master the assimilation of concepts, but also develop their mental capacity by means of exercises to evaluate real situations and apply their knowledge.
2. Learning is solidly translated into practical skills that allow the psychologist to better integrate knowledge into clinical practice.
3. Ideas and concepts are understood more efficiently, given that the example situations are based on real-life.
4. Students like to feel that the effort they put into their studies is worthwhile. This then translates into a greater interest in learning and more time dedicated to working on the course.



Relearning Methodology

At TECH we enhance the case method with the best 100% online teaching methodology available: Relearning.

Our university is the first in the world to combine the study of clinical cases with a 100% online learning system based on repetition, combining a minimum of 8 different elements in each lesson, which is a real revolution compared to the simple study and analysis of cases.

The psychologist will learn through real cases and by solving complex situations in simulated learning environments. These simulations are developed using state-of-the-art software to facilitate immersive learning.



At the forefront of world teaching, the Relearning method has managed to improve the overall satisfaction levels of professionals who complete their studies, with respect to the quality indicators of the best online university (Columbia University).

This methodology has trained more than 150,000 psychologists with unprecedented success in all clinical specialties. Our pedagogical methodology is developed in a highly competitive environment, with a university student body with a strong socioeconomic profile and an average age of 43.5 years old.

Relearning will allow you to learn with less effort and better performance, involving you more in your training, developing a critical mindset, defending arguments, and contrasting opinions: a direct equation for success.

In our program, learning is not a linear process, but rather a spiral (learn, unlearn, forget, and re-learn). Therefore, we combine each of these elements concentrically.

The overall score obtained by our learning system is 8.01, according to the highest international standards.



This program offers the best educational material, prepared with professionals in mind:



Study Material

All teaching material is produced by the specialists who teach the course, specifically for the course, so that the teaching content is highly specific and precise.

These contents are then applied to the audiovisual format, to create the TECH online working method. All this, with the latest techniques that offer high quality pieces in each and every one of the materials that are made available to the student.



Latest Techniques and Procedures on Video

TECH introduces students to the latest techniques, to the latest educational advances, to the forefront of current psychology. All of this in direct contact with students and explained in detail so as to aid their assimilation and understanding. And best of all, you can watch the videos as many times as you like.



Interactive Summaries

The TECH team presents the contents attractively and dynamically in multimedia lessons that include audio, videos, images, diagrams, and concept maps in order to reinforce knowledge.

This exclusive educational system for presenting multimedia content was awarded by Microsoft as a "European Success Story".



Additional Reading

Recent articles, consensus documents and international guidelines, among others. In TECH's virtual library, students will have access to everything they need to complete their course.





Expert-Led Case Studies and Case Analysis

Effective learning ought to be contextual. Therefore, TECH presents real cases in which the expert will guide students, focusing on and solving the different situations: a clear and direct way to achieve the highest degree of understanding.



Testing & Retesting

We periodically evaluate and re-evaluate students' knowledge throughout the program, through assessment and self-assessment activities and exercises, so that they can see how they are achieving their goals.



Classes

There is scientific evidence suggesting that observing third-party experts can be useful.
Learning from an Expert strengthens knowledge and memory, and generates confidence in future difficult decisions.



Quick Action Guides

TECH offers the most relevant contents of the course in the form of worksheets or quick action guides. A synthetic, practical, and effective way to help students progress in their learning.



09

Certificate

The Hybrid Professional Master's Degree in Forensic Psychology and Damage Assessment guarantees, in addition to the most rigorous and up-to-date training, access to a Hybrid Professional Master's Degree issued by TECH Technological University.



“

*Successfully complete this program
and receive your university qualification
without having to travel or fill out
laborious paperwork”*

This **Hybrid Professional Master's Degree in Damage Assessment and Forensic Psychology** contains the most complete and up-to-date program on the professional and educational field.

After the student has passed the assessments, they will receive their corresponding Hybrid Professional Master's Degree diploma issued by TECH Technological University via tracked delivery*.

In addition to the diploma, students will be able to obtain an academic transcript, as well as a certificate outlining the contents of the program. In order to do so, students should contact their academic advisor, who will provide them with all the necessary information.

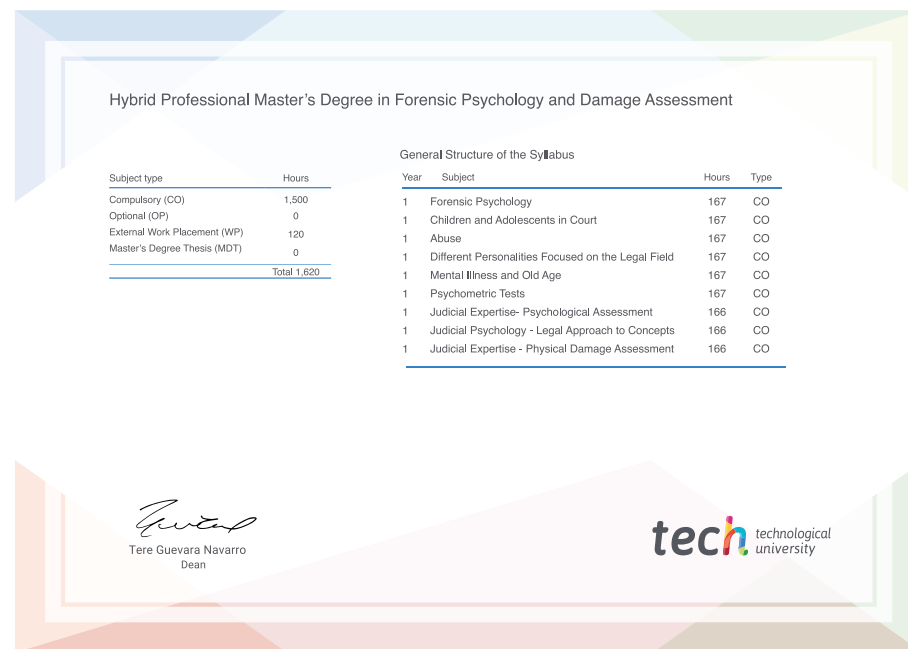
Title: **Hybrid Professional Master's Degree in Forensic Psychology and Damage Assessment**

Course Modality: **Hybrid (Online + Clinical Internship)**

Duration: **12 months**

Certificate: **TECH Technological University**

Teaching Hours: **1,620 h.**



*Apostille Convention. In the event that the student wishes to have their paper diploma issued with an apostille, TECH EDUCATION will make the necessary arrangements to obtain it, at an additional cost.



Hybrid Professional Master's Degree

Forensic Psychology and
Damage Assessment

Course Modality: Hybrid (Online + Clinical Internship)

Duration: 12 months

Certificate: TECH Technological University

Teaching Hours: 1,620 h.

Hybrid Professional Master's Degree

Forensic Psychology and Damage Assessment