

# Postgraduate Diploma

## Comprehensive Approach to Suicidal Behavior



## Postgraduate Diploma Comprehensive Approach to Suicidal Behavior

- » Modality: online
- » Duration: 6 months
- » Certificate: TECH Global University
- » Accreditation: 18 ECTS
- » Schedule: at your own pace
- » Exams: online

Website: [www.techtitude.com/us/psychology/postgraduate-diploma/postgraduate-diploma-comprehensive-approach-suicidal-behavior](http://www.techtitude.com/us/psychology/postgraduate-diploma/postgraduate-diploma-comprehensive-approach-suicidal-behavior)

# Index

01

Introduction to the Program

---

p. 4

02

Why Study at TECH?

---

p. 8

03

Syllabus

---

p. 12

04

Teaching Objectives

---

p. 18

05

Career Opportunities

---

p. 22

06

Study Methodology

---

p. 26

07

Teaching Staff

---

p. 36

08

Certificate

---

p. 40

01

# Introduction to the Program

Suicidal behavior represents one of the most critical public health problems globally, with a devastating impact on individuals, their families and communities. Despite efforts to address this problem, early identification and effective intervention remain complex challenges for professionals. Faced with this reality, psychologists need to incorporate the most innovative suicide prevention strategies into their daily clinical practice, focusing on the latest scientific evidence. With this idea in mind, TECH launches a revolutionary university program focused on the Comprehensive Approach to Suicidal Behavior. At the same time, it is based on a convenient 100% online modality based on free access to the didactic contents.





“

*With this fully online Postgraduate Diploma, you will create holistic intervention plans to manage Suicidal Behavior and optimize the quality of life of patients significantly”*

According to a new study by the World Health Organization, there are more than 700,000 suicide deaths each year, representing a rate of approximately 1 every 40 seconds internationally. This figure highlights the urgency of improving early intervention techniques for suicidal behavior. Therefore, experts have a responsibility to apply therapeutic approaches that not only address suicidal behavior, but also strengthen the resilience and emotional well-being of people at long-term risk.

In this context, TECH presents a cutting-edge Postgraduate Diploma in Comprehensive Approach to Suicidal Behavior. Designed by references in this field, the academic itinerary will delve into aspects ranging from the early identification of warning signs in the family environment or the most modern strategies to support patients in crisis situations to bereavement support. Thanks to this, graduates will be able to intervene holistically in the prevention and treatment of suicidal behavior, applying advanced tools to offer psychological support in all phases of the process.

On the other hand, this university program is distinguished by its 100% online methodology. This modality will provide specialists with the necessary flexibility to adapt to their professional schedules. Likewise, TECH's Relearning methodology, based on the repetition of key concepts, will be implemented to fix knowledge and facilitate effective knowledge updating. In this way, the combination of accessibility and innovative pedagogical approach will ensure that medical professionals acquire practical skills to elevate their work practice to the top. In this sense, the only thing that graduates will need is an electronic device with an Internet connection to access the Virtual Campus. There they will find various multimedia support pills in formats such as explanatory videos, interactive summaries and real clinical case studies.

This **Postgraduate Diploma in Comprehensive Approach to Suicidal Behavior** contains the most complete and up-to-date educational program on the market.

Its most notable features are:

- ♦ The development of practical cases presented by experts in Comprehensive Approach to Suicidal Behavior
- ♦ The graphic, schematic, and practical contents with which they are created, provide scientific and practical information on the disciplines that are essential for professional practice
- ♦ Practical exercises where self-assessment can be used to improve learning
- ♦ Its special emphasis on innovative methodologies in Psychological practice
- ♦ Theoretical lessons, questions to the expert, debate forums on controversial topics, and individual reflection assignments
- ♦ Content that is accessible from any fixed or portable device with an Internet connection



*You will address the stigma associated with Suicide, contributing to increased public awareness about the prevention of suicidal behaviors"*

“

*You will delve into the current rates of suicide and its demographic factors, which will allow you to design prevention strategies at the community level”*

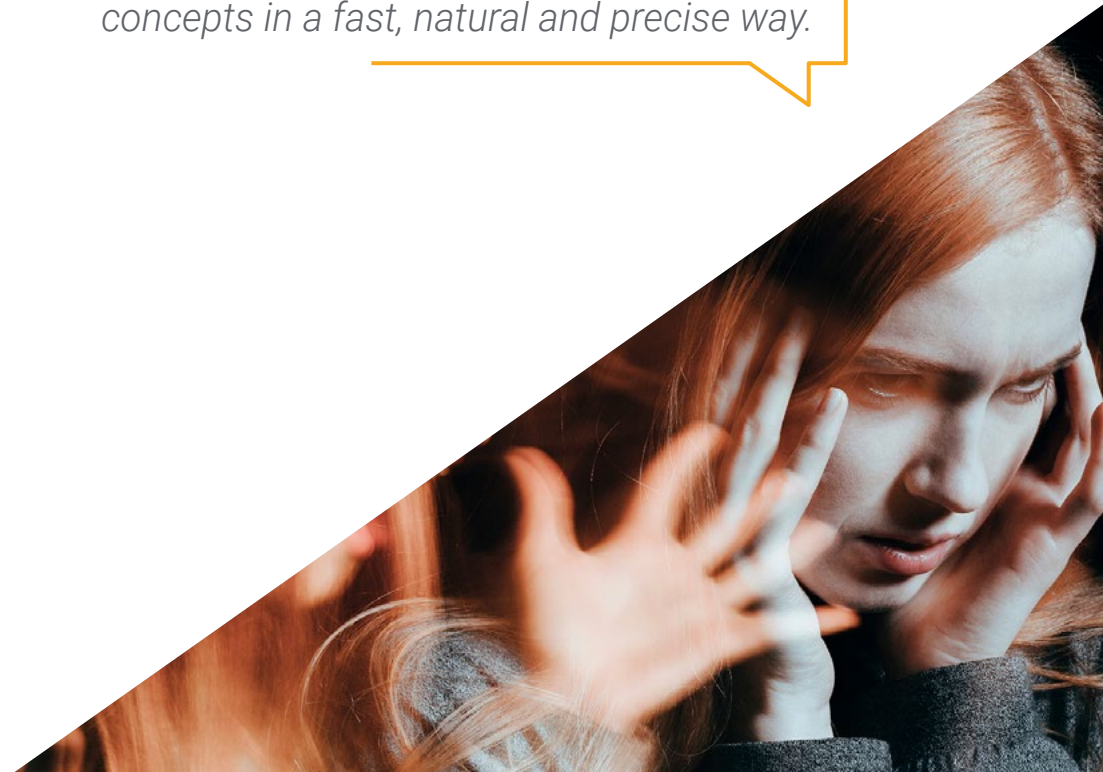
It includes in its teaching staff professionals belonging to the field of the Comprehensive Approach to Suicidal Behavior, who pour into this program the experience of their work, in addition to recognized specialists from reference societies and prestigious universities.

The multimedia content, developed with the latest educational technology, will provide the professional with situated and contextual learning, i.e., a simulated environment that will provide an immersive learning experience designed to prepare for real-life situations.

This program is designed around Problem-Based Learning, whereby the student must try to solve the different professional practice situations that arise throughout the program. For this purpose, the professional will be assisted by an innovative interactive video system created by renowned and experienced experts.

*You will acquire skills to train families in the early detection of suicidal signs.*

*With TECH's disruptive Relearning system, you will be able to assimilate the essential concepts in a fast, natural and precise way.*





02

# Why Study at TECH?

TECH is the world's largest online university. With an impressive catalog of more than 14,000 university programs, available in 11 languages, it is positioned as a leader in employability, with a 99% job placement rate. In addition, it has a huge faculty of more than 6,000 professors of the highest international prestige.





“

*Study at the largest online university in the world and ensure your professional success. The future begins at TECH”*

**The world's best online university, according to FORBES**

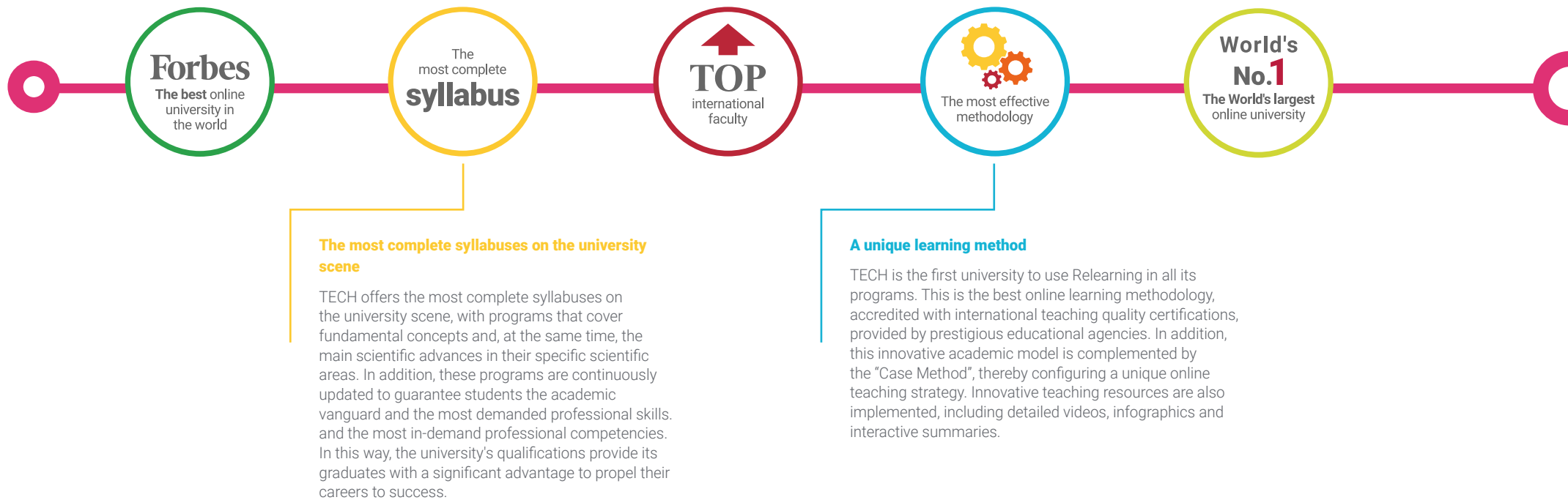
The prestigious Forbes magazine, specialized in business and finance, has highlighted TECH as "the best online university in the world" This is what they have recently stated in an article in their digital edition in which they echo the success story of this institution, "thanks to the academic offer it provides, the selection of its teaching staff, and an innovative learning method oriented to form the professionals of the future".

**The best top international faculty**

TECH's faculty is made up of more than 6,000 professors of the highest international prestige. Professors, researchers and top executives of multinational companies, including Isaiah Covington, performance coach of the Boston Celtics; Magda Romanska, principal investigator at Harvard MetaLAB; Ignacio Wistumba, chairman of the department of translational molecular pathology at MD Anderson Cancer Center; and D.W. Pine, creative director of TIME magazine, among others.

**The world's largest online university**

TECH is the world's largest online university. We are the largest educational institution, with the best and widest digital educational catalog, one hundred percent online and covering most areas of knowledge. We offer the largest selection of our own degrees and accredited online undergraduate and postgraduate degrees. In total, more than 14,000 university programs, in ten different languages, making us the largest educational institution in the world.



#### The official online university of the NBA

TECH is the official online university of the NBA. Thanks to our agreement with the biggest league in basketball, we offer our students exclusive university programs, as well as a wide variety of educational resources focused on the business of the league and other areas of the sports industry. Each program is made up of a uniquely designed syllabus and features exceptional guest hosts: professionals with a distinguished sports background who will offer their expertise on the most relevant topics.

#### Leaders in employability

TECH has become the leading university in employability. Ninety-nine percent of its students obtain jobs in the academic field they have studied within one year of completing any of the university's programs. A similar number achieve immediate career enhancement. All this thanks to a study methodology that bases its effectiveness on the acquisition of practical skills, which are absolutely necessary for professional development.



#### Google Premier Partner

The American technology giant has awarded TECH the Google Premier Partner badge. This award, which is only available to 3% of the world's companies, highlights the efficient, flexible and tailored experience that this university provides to students. The recognition not only accredits the maximum rigor, performance and investment in TECH's digital infrastructures, but also places this university as one of the world's leading technology companies.



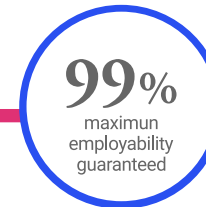
#### The official online university of the NBA

TECH is the official online university of the NBA. Thanks to our agreement with the biggest league in basketball, we offer our students exclusive university programs, as well as a wide variety of educational resources focused on the business of the league and other areas of the sports industry. Each program is made up of a uniquely designed syllabus and features exceptional guest hosts: professionals with a distinguished sports background who will offer their expertise on the most relevant topics.



#### The top-rated university by its students

Students have positioned TECH as the world's top-rated university on the main review websites, with a highest rating of 4.9 out of 5, obtained from more than 1,000 reviews. These results consolidate TECH as the benchmark university institution at an international level, reflecting the excellence and positive impact of its educational model.



#### Leaders in employability

TECH has become the leading university in employability. Ninety-nine percent of its students obtain jobs in the academic field they have studied within one year of completing any of the university's programs. A similar number achieve immediate career enhancement. All this thanks to a study methodology that bases its effectiveness on the acquisition of practical skills, which are absolutely necessary for professional development.



# 03

# Syllabus

The didactic materials that are part of this Postgraduate Diploma have been prepared by authentic references in the Comprehensive Approach to Suicidal Behavior. Therefore, the curriculum will delve into issues ranging from the different models of integrated intervention or early identification of warning signs to the development of personalized interventions to optimize the overall welfare of users. As a result, graduates will be prepared to manage crisis situations and provide effective support to people at suicidal risk.

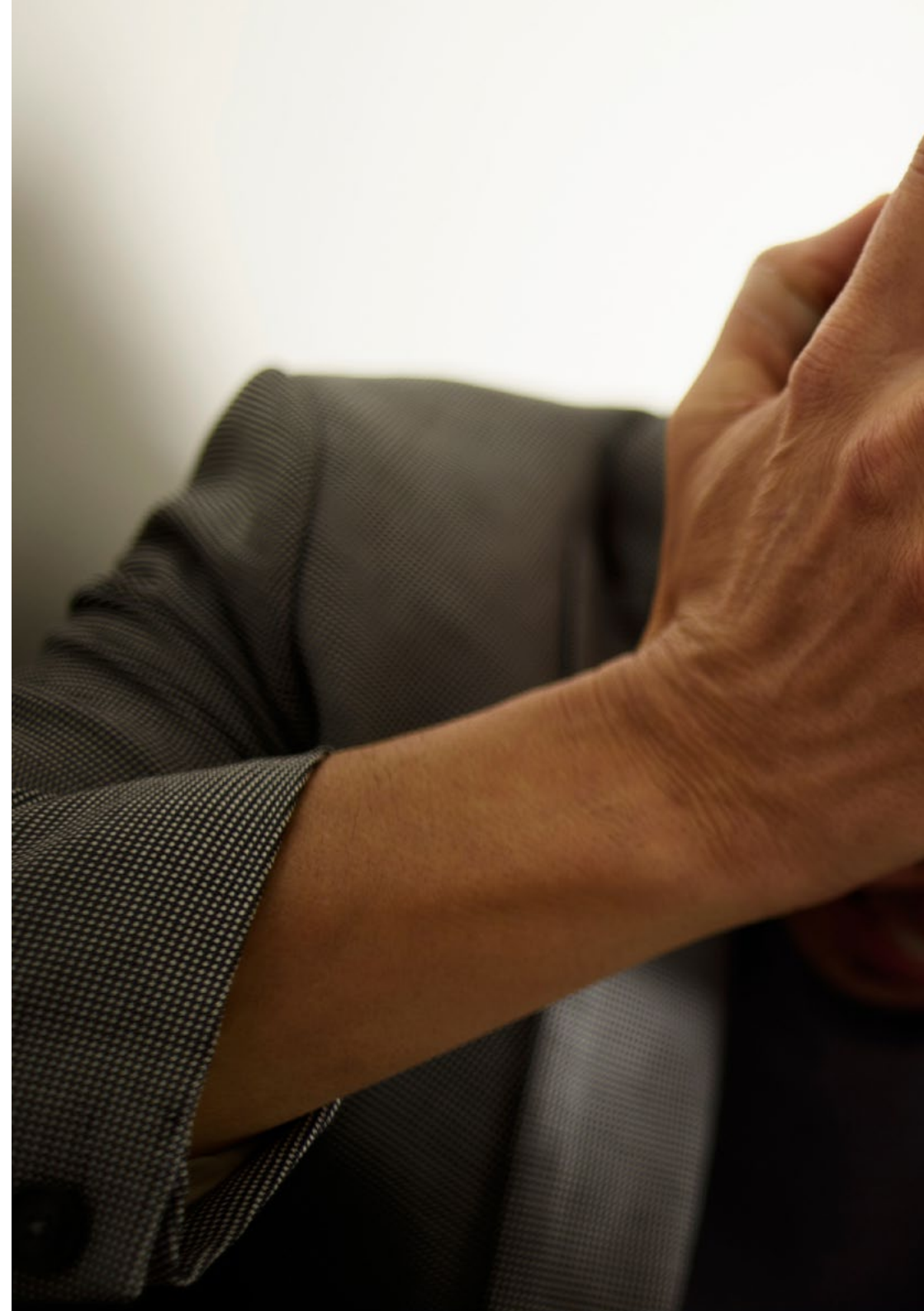


“

*You will be able to manage crisis situations where Suicidal Behavior is an imminent threat, providing immediate support to individuals”*

## Module 1. Epidemiology and Preventive Planning of Suicidal Behavior

- 1.1. Epidemiology of Suicide
  - 1.1.1. Incidence and Prevalence of Suicide Globally and Regionally
  - 1.1.2. Demographic Factors Gender, Age, Ethnicity and Their Influence on Suicide Rates
  - 1.1.3. Historical Trends and Temporal Patterns: How Suicide Rates Have Changed over Time
- 1.2. Theoretical Framework
  - 1.2.1. Health Sciences Prevention
  - 1.2.2. State of the Question
  - 1.2.3. Primary, Secondary and Tertiary Prevention
- 1.3. Suicide Is Preventable
  - 1.3.1. Scientific Evidence on Prevention
  - 1.3.2. Community-Based Interventions
  - 1.3.3. Barriers to Prevention
- 1.4. Integration of Multi-Level Strategies in Suicide Prevention
  - 1.4.1. Universal, Selective and Indicated Prevention Approaches
  - 1.4.2. Coordination between Mental Health and Primary Care Services
  - 1.4.3. Community Initiatives and Public Policies
  - 1.4.4. Technological Innovations in Prevention
- 1.5. Primary Prevention
  - 1.5.1. Education and Public Awareness
  - 1.5.2. Promotion of Emotional and Mental Well-Being
  - 1.5.3. Protective Factors: Fostering Resilience, Coping Skills and Support Networks
  - 1.5.4. Restrictive Policies on Access to Lethal Methods
- 1.6. Secondary Prevention
  - 1.6.1. Early Identification of Persons at Risk
  - 1.6.2. Treatment of Associated Mental Disorders
  - 1.6.3. Crisis Intervention Programs
  - 1.6.4. Post-Crisis Follow-Up and Monitoring







- 1.7. Tertiary Prevention
  - 1.7.1. Intervention after Suicide Attempts
  - 1.7.2. Reduction of Suicidal Recurrence
  - 1.7.3. Support Programs for Survivors
  - 1.7.4. The Role of Psychosocial Rehabilitation
- 1.8. Multidisciplinary and Synergies
  - 1.8.1. Collaboration between Psychiatrists, Psychologists and Other Health Professionals
  - 1.8.2. Involvement of Social Workers, Educators and Law Enforcement Agencies
  - 1.8.3. Integrated Intervention Models
  - 1.8.4. Synergies between Health and Academic Institutions and Non-Governmental Organizations

## Module 2. Social and Family Prevention and Intervention in Suicidal Behavior

- 2.1. Working with Families and Loved Ones in Suicidal Behavior
  - 2.1.1. Detection of Warning Signs in the Family Environment: How to Train the Family to Identify Early Warning Signs
  - 2.1.2. Effective Communication about Suicidal Behavior: Ways to Facilitate Open and Nonjudgmental Dialogue in the Family Environment
  - 2.1.3. Emotional Support for Loved Ones: Managing Stress and Emotional Burden in the Family
  - 2.1.4. Family Safety Plans
- 2.2. Working with Families and Loved Ones in Completed Suicide
  - 2.2.1. Accompaniment in Complicated Bereavement: Interventions for Family Members after Suicide
  - 2.2.2. Emotional Impact on the Family System: Psychological Consequences for Each Family Member
  - 2.2.3. Preventing Intergenerational Transmission of Trauma
  - 2.2.4. Support Groups for Survivors of Suicide

- 2.3. Stigma in Suicide
  - 2.3.1. Consequences of Stigma in the Family of the Suicidal Person
  - 2.3.2. Stigma Reduction through Public Education
  - 2.3.3. Self-Stigma in People with Suicidal Ideation: How Internalized Stigma Exacerbates Suicidal Behavior
  - 2.3.4. Interventions to Dismantle Myths about Suicide
- 2.4. The Role of the Media
  - 2.4.1. Effects of Sensationalism in the Coverage of Suicides: Consequences on Suicidal Behavior, including the Werther Effect
  - 2.4.2. Ethical Guidelines for Journalists: How to Approach Suicide in a Responsible and Preventive Manner
  - 2.4.3. The Role of the Media in Stigma Reduction
  - 2.4.4. Effect of Media Contagion
- 2.5. The Role of the Internet
  - 2.5.1. Risks and Benefits of Accessing Suicide Information on the Internet
  - 2.5.2. Prevention of Cyberbullying and Its Relationship to Suicide
  - 2.5.3. Online Support Communities
  - 2.5.4. Dangerous Content on the Deep Web
- 2.6. Systemic Therapy and Its Application to Suicide
  - 2.7.1. The Family System as a Protective or Risk Factor: How Relationship Patterns within the Family Can Influence Suicidal Behavior
  - 2.6.2. Interventions from Family Therapy: Specific Approaches to Address Suicide in the Family Context
  - 2.6.3. Dysfunctional Family Dynamics and Their Impact on Suicidal Ideation
  - 2.6.4. Systemic Therapy in Suicide Bereavement
- 2.7. Community Support Networks and Their Role in Suicide Prevention
  - 2.7.1. Role of Community Organizations
  - 2.7.2. Suicide Prevention Groups: Organization of Community Workshops and Support Groups
  - 2.7.3. Community-Based Interventions: How to Use Local Resources to Implement Prevention Programs
  - 2.7.4. Mobilization of Community Resources after a Completed Suicide

- 2.8. Impact of Suicide on Children and Adolescents in the Family Environment
  - 2.9.1. Typical Reactions of Children to Suicide in the Family: How to Manage the Emotional Impact on Minors
  - 2.8.2. Age-Appropriate Interventions for Bereavement: Therapeutic Approaches according to Developmental Levels
  - 2.8.3. Suicide Prevention in Children Who Have Lost a Loved One to Suicide
  - 2.8.4. How to Deal with Suicide in the Family with Children
- 2.9. Family Bereavement after Suicide
  - 2.9.1. Traditional vs. Contemporary Models of Bereavement
  - 2.9.2. Individual vs. Group Bereavement Therapy
  - 2.9.3. Approach to Traumatic Grief
  - 2.9.4. The Role of Rituals and Memory



*You will have access to a variety of supporting multimedia resources such as detailed videos, interactive summaries or readings based on the latest scientific evidence"*





04

# Teaching Objectives

This university program will provide psychologists with the necessary tools to address suicidal behavior in a holistic manner. At the same time, graduates will obtain advanced clinical skills to identify, evaluate and intervene in situations of suicidal risk. In this way, specialists will be able to develop prevention programs and even manage emotional crises. In addition, they will be trained to lead mental health projects, promoting prevention and psychological well-being in diverse clinical and community settings.





“

*You will apply ethical principles in the intervention with patients at suicidal risk, maintaining an attitude of respect, empathy and confidentiality”*



## General Objectives

---

- ♦ Delve into the risk factors, underlying causes, and warning signs of Suicide, both at the individual and societal level
- ♦ Identify early signs of risk and apply effective interventions that prevent Suicide in a variety of settings, including clinical, educational and community
- ♦ Delve into postvention support management, providing tools to help people affected by the suicide of a loved one
- ♦ Provide psychological care to patients with suicidal thoughts, using therapeutic approaches such as cognitive-behavioral therapy and other validated interventions
- ♦ Manage educational and preventive strategies to promote awareness and reduce stigma related to Suicide and Mental Disorders
- ♦ Master techniques to help families and communities cope with bereavement following suicide, promoting resilience and emotional well-being in those affected

“

*A flexible academic itinerary, which is not subject to tight schedules and allows you to customize your studies according to your needs and interests. Enroll now!”*







## Specific Objectives

---

### **Module 1. Epidemiology and Preventive Planning of Suicidal Behavior**

- ♦ Analyze global and local suicide rates and epidemiological patterns
- ♦ Identify demographic, social, and cultural risk and protective factors associated with suicidal behavior
- ♦ Evaluate the impact of public policies and preventive initiatives on suicide rates
- ♦ Develop skills to interpret epidemiological studies and apply their results in preventive planning

### **Module 2. Social and Family Prevention and Intervention in Suicidal Behavior**

- ♦ Identify the role of the family and social environment in suicidal behavior
- ♦ Develop intervention skills in family dynamics that may increase or reduce suicidal risk
- ♦ Create psychoeducation programs aimed at family members of people at risk
- ♦ Establish social and community support networks for suicide prevention

05

# Career Opportunities

Through this TECH Postgraduate Diploma, psychology professionals will acquire an approach based on the Comprehensive Approach to Suicidal Behavior. In this way, specialists will develop advanced clinical skills to identify, evaluate and intervene effectively in patients with suicidal risk. In addition, they will be able to design and implement prevention programs, providing support to individuals in crisis situations.





“

*Are you looking to work as a psychologist in emergency units? Do it with this university program in just 6 months”*

### Graduate Profile

Graduates of this university program will be highly qualified to intervene in severe cases of suicidal behavior, applying advanced therapeutic approaches and effective assessment tools. At the same time, they will have the skills to design crisis prevention and management programs, promoting mental health and expanding their capacity to act in different areas of the clinical and community environment.

*You will develop skills to apply effective therapeutic interventions to treat patients with Suicidal Behavior, improving their quality of life considerably.*

- ♦ **Crisis Intervention and Emotional Management:** Skill in applying effective therapeutic approaches in suicidal crisis situations, providing emotional support to at-risk individuals and appropriately managing the emotional responses of those affected
- ♦ **Effective and Empathic Communication:** Ability to establish open, respectful and empathetic communication with patients and their families, facilitating the suicide intervention and Postvention process in a comprehensive and effective manner
- ♦ **Risk Assessment and Diagnosis:** Ability to use clinical assessment tools and methods to identify suicidal risk in diverse populations, making accurate diagnoses and developing appropriate intervention plans
- ♦ **Bereavement Management and Psychosocial Support:** Competency to provide psychological support to individuals affected by the loss of a loved one by suicide, fostering the grieving process and promoting resilience and emotional well-being





After completing the program, you will be able to use your knowledge and skills in the following positions:

- 1. Psychologist specialized in Suicide Prevention:** Responsible for designing and implementing Suicide Prevention programs, applying evidence-based interventions to identify and reduce risk factors in communities, institutions and clinical settings.
- 2. Specialist in Safety and Ethics in Suicide Prevention:** Responsible for developing and applying ethical regulations in psychological interventions, ensuring that Suicide Prevention and Postvention programs respect the rights and privacy of patients, and promoting confidentiality and safety in treatment.
- 3. Clinical Psychologist in Crisis Intervention:** Specialist in suicidal crisis management, responsible for immediate and effective intervention in situations of suicidal risk, using brief intervention techniques and risk assessment to ensure patient safety.
- 4. Consultant in Suicide Prevention Policies:** Responsible for collaborating with governmental, educational and health institutions to develop and implement public policies aimed at Suicide Prevention, raising awareness in society and ensuring the integration of mental health in the collective welfare.
- 5. Psychologist specialized in Suicide Risk Assessment and Diagnosis:** Responsible for conducting detailed psychological assessments to identify signs of suicidal risk in patients, using diagnostic tools to guide therapeutic interventions and appropriate treatment plans.
- 6. Expert in Suicide Prevention Research:** Dedicated to scientific research on risk factors, predictive models and effective interventions in Suicide Prevention, contributing to the development of new strategies based on data and evidence.



*You will have the most modern tools to identify, evaluate and intervene in cases of suicidal behavior"*

06

# Study Methodology

TECH is the world's first university to combine the **case study** methodology with **Relearning**, a 100% online learning system based on guided repetition.

This disruptive pedagogical strategy has been conceived to offer professionals the opportunity to update their knowledge and develop their skills in an intensive and rigorous way. A learning model that places students at the center of the educational process giving them the leading role, adapting to their needs and leaving aside more conventional methodologies.



“

*TECH will prepare you to face new challenges in uncertain environments and achieve success in your career”*



## The student: the priority of all TECH programs

In TECH's study methodology, the student is the main protagonist.

The teaching tools of each program have been selected taking into account the demands of time, availability and academic rigor that, today, not only students demand but also the most competitive positions in the market.

With TECH's asynchronous educational model, it is students who choose the time they dedicate to study, how they decide to establish their routines, and all this from the comfort of the electronic device of their choice. The student will not have to participate in live classes, which in many cases they will not be able to attend. The learning activities will be done when it is convenient for them. They can always decide when and from where they want to study.

“

*At TECH you will NOT have live classes  
(which you might not be able to attend)”*





### The most comprehensive study plans at the international level

TECH is distinguished by offering the most complete academic itineraries on the university scene. This comprehensiveness is achieved through the creation of syllabi that not only cover the essential knowledge, but also the most recent innovations in each area.

By being constantly up to date, these programs allow students to keep up with market changes and acquire the skills most valued by employers. In this way, those who complete their studies at TECH receive a comprehensive education that provides them with a notable competitive advantage to further their careers.

And what's more, they will be able to do so from any device, pc, tablet or smartphone.

“*TECH's model is asynchronous, so it allows you to study with your pc, tablet or your smartphone wherever you want, whenever you want and for as long as you want*”

## Case Studies and Case Method

The case method has been the learning system most used by the world's best business schools. Developed in 1912 so that law students would not only learn the law based on theoretical content, its function was also to present them with real complex situations. In this way, they could make informed decisions and value judgments about how to resolve them. In 1924, Harvard adopted it as a standard teaching method.

With this teaching model, it is students themselves who build their professional competence through strategies such as Learning by Doing or Design Thinking, used by other renowned institutions such as Yale or Stanford.

This action-oriented method will be applied throughout the entire academic itinerary that the student undertakes with TECH. Students will be confronted with multiple real-life situations and will have to integrate knowledge, research, discuss and defend their ideas and decisions. All this with the premise of answering the question of how they would act when facing specific events of complexity in their daily work.



## Relearning Methodology

At TECH, case studies are enhanced with the best 100% online teaching method: Relearning.

This method breaks with traditional teaching techniques to put the student at the center of the equation, providing the best content in different formats. In this way, it manages to review and reiterate the key concepts of each subject and learn to apply them in a real context.

In the same line, and according to multiple scientific researches, reiteration is the best way to learn. For this reason, TECH offers between 8 and 16 repetitions of each key concept within the same lesson, presented in a different way, with the objective of ensuring that the knowledge is completely consolidated during the study process.

*Relearning will allow you to learn with less effort and better performance, involving you more in your specialization, developing a critical mindset, defending arguments, and contrasting opinions: a direct equation to success.*





## A 100% online Virtual Campus with the best teaching resources

In order to apply its methodology effectively, TECH focuses on providing graduates with teaching materials in different formats: texts, interactive videos, illustrations and knowledge maps, among others. All of them are designed by qualified teachers who focus their work on combining real cases with the resolution of complex situations through simulation, the study of contexts applied to each professional career and learning based on repetition, through audios, presentations, animations, images, etc.

The latest scientific evidence in the field of Neuroscience points to the importance of taking into account the place and context where the content is accessed before starting a new learning process. Being able to adjust these variables in a personalized way helps people to remember and store knowledge in the hippocampus to retain it in the long term. This is a model called Neurocognitive context-dependent e-learning that is consciously applied in this university qualification.

In order to facilitate tutor-student contact as much as possible, you will have a wide range of communication possibilities, both in real time and delayed (internal messaging, telephone answering service, email contact with the technical secretary, chat and videoconferences).

Likewise, this very complete Virtual Campus will allow TECH students to organize their study schedules according to their personal availability or work obligations. In this way, they will have global control of the academic content and teaching tools, based on their fast-paced professional update.



*The online study mode of this program will allow you to organize your time and learning pace, adapting it to your schedule"*

### The effectiveness of the method is justified by four fundamental achievements:

1. Students who follow this method not only achieve the assimilation of concepts, but also a development of their mental capacity, through exercises that assess real situations and the application of knowledge.
2. Learning is solidly translated into practical skills that allow the student to better integrate into the real world.
3. Ideas and concepts are understood more efficiently, given that the example situations are based on real-life.
4. Students like to feel that the effort they put into their studies is worthwhile. This then translates into a greater interest in learning and more time dedicated to working on the course.

### The university methodology top-rated by its students

The results of this innovative teaching model can be seen in the overall satisfaction levels of TECH graduates.

The students' assessment of the teaching quality, the quality of the materials, the structure of the program and its objectives is excellent. Not surprisingly, the institution became the top-rated university by its students according to the global score index, obtaining a 4.9 out of 5.

*Access the study contents from any device with an Internet connection (computer, tablet, smartphone) thanks to the fact that TECH is at the forefront of technology and teaching.*

*You will be able to learn with the advantages that come with having access to simulated learning environments and the learning by observation approach, that is, Learning from an expert.*



As such, the best educational materials, thoroughly prepared, will be available in this program:



#### Study Material

All teaching material is produced by the specialists who teach the course, specifically for the course, so that the teaching content is highly specific and precise.

This content is then adapted in an audiovisual format that will create our way of working online, with the latest techniques that allow us to offer you high quality in all of the material that we provide you with.



#### Practicing Skills and Abilities

You will carry out activities to develop specific competencies and skills in each thematic field. Exercises and activities to acquire and develop the skills and abilities that a specialist needs to develop within the framework of the globalization we live in.



#### Interactive Summaries

We present the contents attractively and dynamically in multimedia lessons that include audio, videos, images, diagrams, and concept maps in order to reinforce knowledge.

This exclusive educational system for presenting multimedia content was awarded by Microsoft as a "European Success Story".

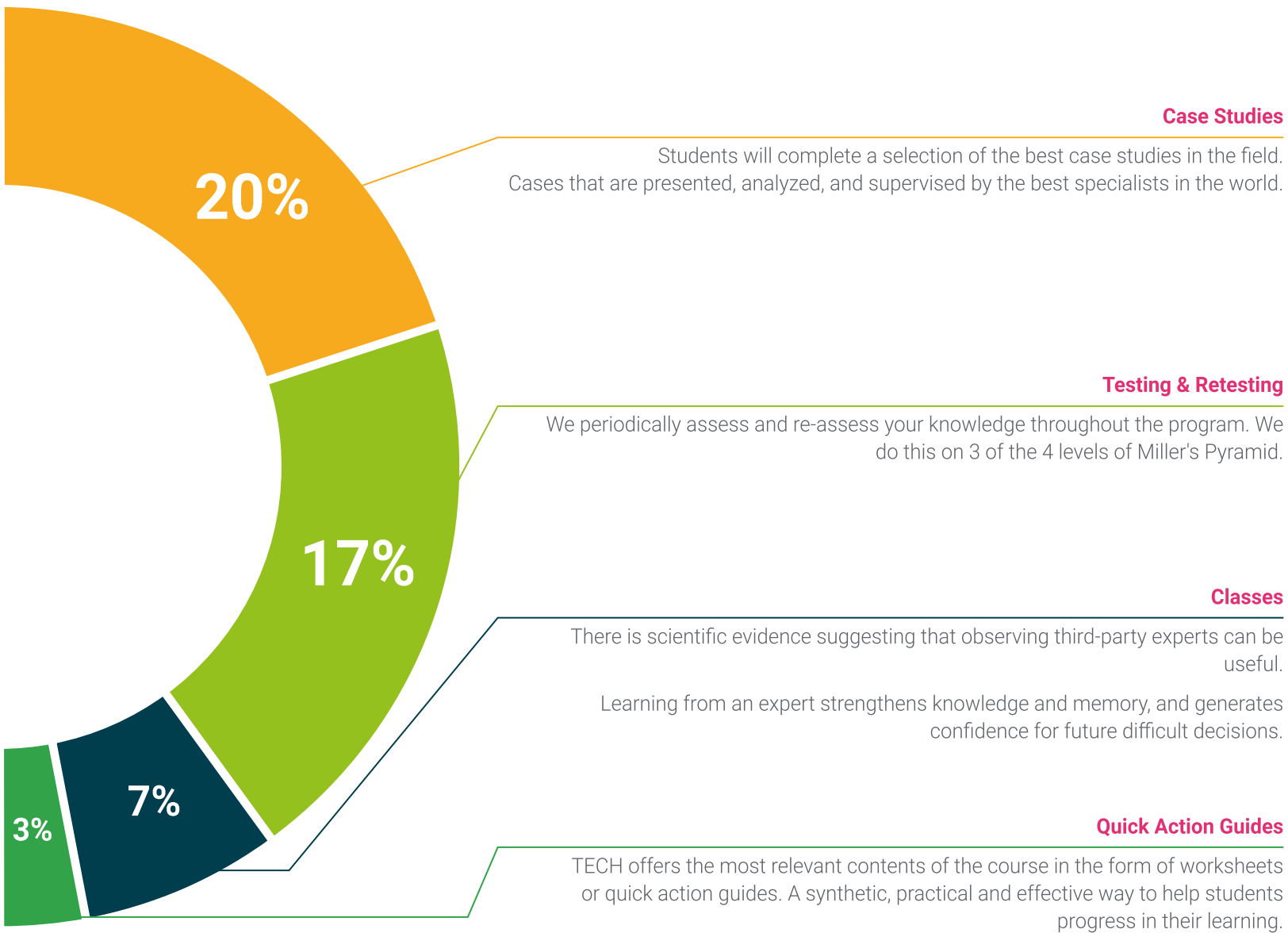


#### Additional Reading

Recent articles, consensus documents, international guides... In our virtual library you will have access to everything you need to complete your education.







07

# Teaching Staff

TECH's priority is to make available to everyone the most complete and up-to-date university programs on the academic scene. For this reason, it carries out a thorough process to form its teaching staff. As a result, this Postgraduate Diploma has the collaboration of renowned experts in the Comprehensive Approach to Suicidal Behavior. As such, they have developed a myriad of didactic contents that stand out for their high quality and full applicability to the demands of today's labor market. In this way, graduates will enjoy an immersive experience that will significantly increase their professional prospects.



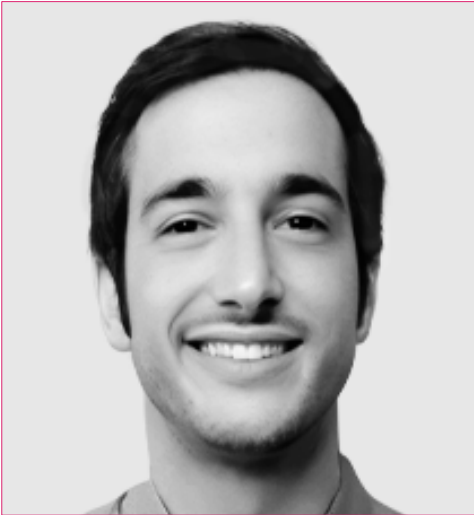


“

*You will be advised at all times  
by the teaching staff, made up of  
true leaders in the Comprehensive  
Approach to Suicidal Behavior”*



## Management



### Dr. Alberdi Páramo, Iñigo

- ♦ Area Specialist in Psychiatric Hospitalization Unit/Psychogeriatrics at the Institute of Psychiatry and Mental Health of the San Carlos Clinical Hospital
- ♦ Area Specialist in Outpatient Psychiatry Liaison Psychiatry and Specialized Service in Mental Health in Intellectually Handicapped at the University Hospital La Princesa
- ♦ Area Specialist of Psychiatry in CSM Chamberí - Carabanchel
- ♦ Author and co-author of numerous scientific articles and book chapters
- ♦ Professor in undergraduate and postgraduate university studies.
- ♦ Doctor in Medicine - Psychiatry by the Complutense University of Madrid
- ♦ University Specialist in Clinical and Psychoanalytic Psychotherapy by the Pontifical University of Comillas

## Professors

### Ms. Alonso Sánchez, Elena Begoña

- ♦ Psychiatrist at the University Hospital Torrejon de Ardoz
- ♦ Coordinator of the Attention to Suicidal Risk program at the University Hospital Torrejón de Ardoz
- ♦ Clinical Researcher
- ♦ Coordinator of the Integral Attention to the Sick Physician program
- ♦ Degree in Medicine from the University of Seville

### Ms. Pérez Navarro, Virginia

- ♦ Clinical Psychologist at the Clinical Hospital San Carlos
- ♦ Specialist in Systemic Interventions
- ♦ Clinical Researcher
- ♦ Degree in Psychology from the University of Murcia



08

# Certificate

This Postgraduate Diploma in Comprehensive Approach to Suicidal Behavior guarantees, in addition to the most rigorous and up-to-date program, access to an Postgraduate Diploma issued by TECH Global University.





“

*Successfully complete this program and receive your university qualification without having to travel or fill out laborious paperwork”*

This private qualification will allow you to obtain a diploma for the **Postgraduate Diploma in Comprehensive Approach to Suicidal Behavior** endorsed by **TECH Global University**, the world's largest online university.

**TECH Global University**, is an official European University publicly recognized by the Government of Andorra ([official bulletin](#)). Andorra is part of the European Higher Education Area (EHEA) since 2003. The EHEA is an initiative promoted by the European Union that aims to organize the international training framework and harmonize the higher education systems of the member countries of this space. The project promotes common values, the implementation of collaborative tools and strengthening its quality assurance mechanisms to enhance collaboration and mobility among students, researchers and academics.

This **TECH Global University** private qualification, is a European program of continuing education and professional updating that guarantees the acquisition of competencies in its area of knowledge, providing a high curricular value to the student who completes the program.

Title: **Postgraduate Diploma in Comprehensive Approach to Suicidal Behavior**

Modality: **online**

Duration: **6 months**

Accreditation: **18 ECTS**





**Postgraduate Diploma**  
Comprehensive Approach  
to Suicidal Behavior

- » Modality: online
- » Duration: 6 months
- » Certificate: TECH Global University
- » Accreditation: 18 ECTS
- » Schedule: at your own pace
- » Exams: online



# Postgraduate Diploma

## Comprehensive Approach to Suicidal Behavior