

Postgraduate Certificate

Research in Clinical and Health Psychology



Postgraduate Certificate

Research in Clinical and Health Psychology

- » Modality: online
- » Duration: 6 weeks
- » Certificate: TECH Global University
- » Accreditation: 6 ECTS
- » Schedule: at your own pace
- » Exams: online

Website: www.techtitude.com/us/psychology/postgraduate-certificate/research-clinical-health-psychology

Index

01

Introduction

p. 4

02

Objectives

p. 8

03

Structure and Content

p. 12

04

Methodology

p. 16

05

Certificate

p. 24

01

Introduction

Learn the main techniques and strategies of Research in Clinical and Health Psychology with this complete program designed by experts in the field. Throughout these weeks you will acquire the necessary skills to perform scientific information searches in Psychology.





“

This Postgraduate Certificate will broaden your horizons as a health psychologist and will allow you to grow personally and professionally"

Psychologists play a fundamental role in healthcare when it comes to improving people's physical, mental and social wellbeing. Today they are an essential component in resolving different psychological disorders.

This University Course provides extensive knowledge in advanced models and techniques in assessment, diagnosis and psychological intervention in this field of health. For this, you will have a teaching faculty that stands out for its extensive professional experience in the different areas in which psychology has developed and in different sectors of the population.

Throughout this program, the student will go through all the current approaches in the work carried out by health psychologists. The correct approach to psychological assessments and interviews; the implementation of psychological techniques for stress prevention or the assimilation of the different phases of the research process in Psychology. There will be some of the many topics of work and study that students will be able to integrate into their training with this comprehensive program.

We will not only take you through the theoretical knowledge we offer, but we will introduce you to another way of studying and learning, one which is simpler, more organic and more efficient. We will work to keep you motivated and to develop your passion for learning, helping you to analyze and to develop critical thinking skills.

A high-level step that will become a process of improvement, not only on a professional level, but also on a personal level.

This **Postgraduate Certificate in Research in Clinical and Health Psychology** has the most complete and up-to-date academic program in the university landscape. The most important features of the University Course are:

- ♦ Developing 100 practical cases presented by experts in General Health Psychology
- ♦ The graphic, schematic, and eminently practical contents with which they are created provide scientific and practical information on the disciplines that are essential for carrying out research
- ♦ News and innovations on research in the different fields of psychology
- ♦ Practical exercises where self-assessment can be used to improve learning.
- ♦ Algorithm-based interactive learning system for decision-making in the situations that are presented to the student.
- ♦ Special emphasis on research methodologies
- ♦ Theoretical lessons, questions to the expert, debate forums on controversial topics, and individual reflection assignments
- ♦ Content that is accessible from any fixed or portable device with an Internet connection



A training program created for professionals who aspire for excellence, and that will enable you to acquire new skills and strategies easily and effectively".



Access deep insights in General Health Psychology and its multiple implications, in a comprehensive Postgraduate Certificate designed to propel you to another professional level"

It includes a very broad teaching staff made up of experts in psychology, who share their work experience in this training, as well as recognized specialists from leading communities and prestigious universities.

The multimedia content, developed with the latest educational technology, will provide the professional with situated and contextual learning, i.e., a simulated environment that will provide an immersive training program designed to train in real situations.

This program is designed around Problem Based Learning, where the student must try to solve the different professional practice situations that arise during the course. For this purpose, the professional will be assisted by an innovative interactive video system created by renowned and experienced research experts.

Increase your confidence as a healthcare psychiatrist by updating your knowledge through this University Course.

This University Course marks the difference between a professional with a lot of knowledge, and a professional who knows how to apply it in their daily practice.



02 Objectives

This program is aimed at healthcare psychologists, so that they can acquire the necessary tools to develop in the field, learning about the latest trends and delving into the issues that are at the forefront of this branch of knowledge. Only with the right preparation, you will be able to successfully achieve your objectives.



“

If your goal is to improve in your profession and acquire a qualification that will enable you to compete with the best, then look no further. This specialization will give your career the boost it needs"



General Objectives

- ♦ Train professionals qualified to perform Research in Clinical and Health Psychology according to current legislation, with the ability to carry out effective assessments and treatments in people's behavior and activity in order to promote and improve their general state of health

“

This Postgraduate Certificate is aimed at all psychologists who want to achieve a high degree of specialization in the healthcare sector”





Specific Objectives

- ♦ Understand the definition and characteristics of Clinical and Health Psychology, its historical background and its relationship with other disciplines
- ♦ Know the legal framework that regulates the practice of General Health Psychology in Spain and other countries, as well as the main controversies
- ♦ Study ethical and deontological standards in the practice of both the health profession and research, with emphasis on data protection obligations
- ♦ Provide a biopsychosocial perspective on health problems and comment on the theories that explain the relationship between psychological factors and health status
- ♦ Detail the different explanatory theories of stress and its impact on health and disease in individuals
- ♦ Understand the importance of interprofessional communication in General Health Psychology and to detail how it is carried out and the health care settings in which it is most frequently performed
- ♦ Know the main models of psychopathology and the current classification systems and understand their usefulness for health psychology
- ♦ Describe what evidence-based clinical practice consists of, the benefits it provides, the methodology it uses, the skills needed to develop it, and its limitations and future challenges
- ♦ Discover how outcome assessment and evaluation of the therapeutic process is carried out
- ♦ Delve into the phases of the research process in psychology and the different research designs that can be used
- ♦ Present the main ways of applying new technologies to psychological treatment, as well as their main advantages and disadvantages
- ♦ Understand the importance of research in the practice of health psychology
- ♦ Study the process of psychological research in depth
- ♦ Acquire the necessary skills to perform scientific information searches in Psychology
- ♦ Delve into the requirements for correctly carrying out a systematic review or meta-analysis
- ♦ Describe the rules and formats for the presentation of citations and bibliographic references in a scientific study
- ♦ Specify the characteristics of the main research designs
- ♦ Detail the most convenient data analysis techniques for each research design

03

Structure and Content

The structure of the contents has been designed by a team of professionals in Research in Clinical and Health Psychology who are aware of the importance of being up to date in order to look into this field of knowledge and produce publications of academic quality.



“

This Postgraduate Certificate in Research in Clinical and Health Psychology has the most complete and updated scientific program in the market”

Module 1. Scientific and Professional Foundations of Psychology General Health Psychology

- 1.1. Clinical and Health Psychology
 - 1.1.1. Historical Background.
 - 1.1.2. Clinical Psychology
 - 1.1.3. Health Psychology
- 1.2. Legal Framework for Psychology as a Health Profession
 - 1.2.1. History of Health Psychology in Spain
 - 1.2.2. Current Legislation of Health Psychology in Spain
 - 1.2.3. Controversies and Future Challenges in Health Psychology
- 1.3. Ethical and Deontological Aspects of Health Psychology
 - 1.3.1. Basic Concepts of Ethics and Deontology
 - 1.3.2. Ethical-Deontological Aspects of Psychology as a Scientific Discipline
 - 1.3.3. Ethical-Deontological Aspects of Psychology as a Scientific Discipline
 - 1.3.4. Data Protection in Psychology
- 1.4. Health: Conceptualization and Models
 - 1.4.1. Conceptualization of Health
 - 1.4.2. Health Models
 - 1.4.3. Theories of Behavior and Health
- 1.5. Stress and Psychosocial Factors in the Health-Disease Process
 - 1.5.1. Theories of Stress
 - 1.5.2. Relationship between Stress and Disease
 - 1.5.3. Personality and Health
- 1.6. Interprofessional and Health Outcomes Communication
 - 1.6.1. Psychosocial Rehabilitation
 - 1.6.2. Health Care from the Community and Hospital Settings
 - 1.6.3. Results Communication
- 1.7. Diagnostic Classifications: Basic and Differential Aspects
 - 1.7.1. Concepts and Models in Psychopathology
 - 1.7.2. Diagnostic Classifications in Psychopathology
 - 1.7.3. New Classification Systems in Psychopathology
- 1.8. Fundamentals of Evidence-Based Clinical Practice and Evidence-Based Evaluation
 - 1.8.1. Introduction to Evidence-Based Clinical Practice
 - 1.8.2. Evidence-Based Clinical Practice Methodology
 - 1.8.3. Evidence-Based Psychology
- 1.9. Evidence-Based Psychological Treatments
 - 1.9.1. History of Effectiveness Evaluation
 - 1.9.2. Clinical Practice Guidelines
 - 1.9.3. Limitations and Challenges of Evidence-Based Treatments
- 1.10. Transdiagnostic Approach and Evaluation of Processes and Outcomes
 - 1.10.1. Transdiagnostic Approach
 - 1.10.2. Evaluation of Therapeutic Results
 - 1.10.3. Evaluation of Therapeutic Processes
- 1.11. Fundamentals of Research and New Technologies in Health Psychology
 - 1.11.1. Scientific Research in Psychology
 - 1.11.2. Research Designs
 - 1.11.3. Intervention through New Technologies
- 1.12. Scientific-Professional Resources for Healthcare Practice
 - 1.12.1. Criteria and Search in Systematic Reviews
 - 1.12.2. Study Selection and Data Extraction in Systematic Reviews
 - 1.12.3. Analysis of Results in Systematic Reviews

Module 2. Research Applied to Health Psychology

- 2.1. Scientific Research
 - 2.1.1. Research in Psychology
 - 2.1.2. Research Process
 - 2.1.3. Research Designs
 - 2.1.3.1. Manipulative Strategy Designs
 - 2.1.3.2. Non-Manipulative Strategy Designs
- 2.2. Search for Scientific Information
 - 2.2.1. Information Sources
 - 2.2.2. Search Strategy
 - 2.2.3. Other Aspects of the Search Process
- 2.3. Systematic Reviews: Data Selection and Extraction Process
 - 2.3.1. Selection Process
 - 2.3.1.1. Study Selection
 - 2.3.1.2. Other Aspects of the Selection Process
 - 2.3.2. Data Extraction
 - 2.3.2.1. Data Extraction: Data to be Extracted and Sources
 - 2.3.2.2. Data Extraction: Extraction Process
- 2.4. Systematic Reviews: Risk of Bias Assessment
 - 2.4.1. Sources and Dimensions of Bias
 - 2.4.2. Risk of Bias within Studies
 - 2.4.3. Risk of Bias across Studies
- 2.5. Meta-Analysis
 - 2.5.1. Measuring the Effect
 - 2.5.2. Summary of Effects across Studies
 - 2.5.3. Heterogeneity
- 2.6. Scientific Report and Bibliographic References
 - 2.6.1. Requirements and Sections of a Scientific Report
 - 2.6.2. Referencing Styles
 - 2.6.3. Citing and Referencing with APA Standards

- 2.7 - Experimental Designs
 - 2.7.1. Cross-Group Experimental Designs
 - 2.7.1.1. Cross-Group Experimental Designs: Features and Types
 - 2.7.1.2. Cross-Group Experimental Designs: Data Analysis Techniques
 - 2.7.2. Intrasubject Experimental Designs
 - 2.7.2.1. Intrasubject Experimental Designs: Features and Types
 - 2.7.2.2. Intrasubject Experimental Designs: Data Analysis Techniques
- 2.8. Factorial Designs
 - 2.8.1. Ex Post Facto Designs: Features and Types
 - 2.8.2. Ex Post Facto Designs: Data Analysis Techniques
- 2.9. Quasi-Experimental Designs
 - 2.9.1. Ex Post Facto Designs: Features and Types
 - 2.9.2. Ex Post Facto Designs: Data Analysis Techniques
- 2.10. Other Research Designs
 - 2.10.1. Single Case Designs
 - 2.10.1.1. Single Case Designs: Features and Types
 - 2.10.1.2. Single Case Designs: Data Analysis Techniques
 - 2.10.2. Ex Post Facto Designs
 - 2.10.2.1. Ex Post Facto Designs: Features and Types
 - 2.10.2.2. Ex Post Facto Designs: Data Analysis Techniques
 - 2.10.3. Qualitative Research
 - 2.10.3.1. Qualitative Research: Features
 - 2.10.3.2. Qualitative Research: Types



Our curriculum has been designed with teaching effectiveness in mind: so that you learn faster, more efficiently, and on a more permanent basis"

04

Methodology

This training program provides you with a different way of learning. Our methodology uses a cyclical learning approach: ***Re-learning***.

This teaching system is used, for example, in the most prestigious medical schools in the world has been considered one of the most efficient by major publications such as the ***New England Journal of Medicine***.



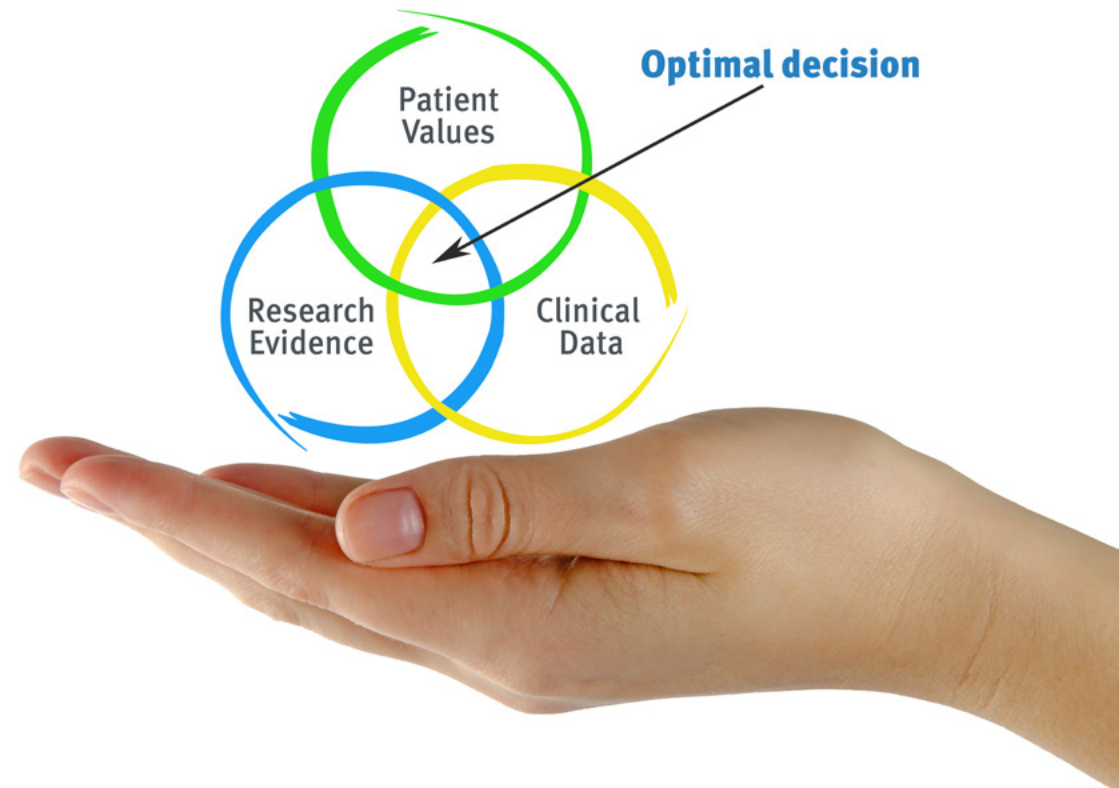
“

Discover Re-learning, a system that abandons conventional linear learning, to take you through cyclical teaching systems: a way of learning that has proven to be extremely effective, especially in subjects that require memorization"

At TECH we use the Case Method

What should a professional do in a given situation? Throughout the program, students will face multiple simulated clinical cases, based on real patients, in which they will have to do research, establish hypotheses, and ultimately resolve the situation. There is abundant scientific evidence on the effectiveness of the method. Specialists learn better, faster, and more sustainably over time.

With TECH the psychologist experiences a way of learning that is shaking the foundations of traditional universities around the world.



According to Dr. Gervas, the clinical case is the annotated presentation of a patient, or group of patients, which becomes a "case", an example or model that illustrates some peculiar clinical component, either because of its teaching power or because of its uniqueness or rarity. It is essential that the case is based on current professional life, trying to recreate the real conditions in the psychologist's professional practice.

“

Did you know that this method was developed in 1912, at Harvard, for law students? The case method consisted of presenting students with real-life, complex situations for them to make decisions and justify their decisions on how to solve them. In 1924, Harvard adopted it as a standard teaching method”

The effectiveness of the method is justified by four fundamental achievements:

1. Psychologists who follow this method not only master the assimilation of concepts, but also develop their mental capacity by means of exercises to evaluate real situations and apply their knowledge.
2. Learning is solidly translated into practical skills that allow the psychologist to better integrate knowledge into clinical practice.
3. Ideas and concepts are understood more efficiently, given that the example situations are based on real-life.
4. Students like to feel that the effort they put into their studies is worthwhile. This then translates into a greater interest in learning and more time dedicated to working on the course.



Re-Learning Methodology

At TECH we enhance the Harvard case method with the best 100% online teaching methodology available: Re-learning.

Our university is the first in the world to combine the study of clinical cases with a 100% online learning system based on repetition, combining a minimum of 8 different elements in each lesson, which is a real revolution compared to the simple study and analysis of cases.

The psychologist will learn through real cases and by solving complex situations in simulated learning environments. These simulations are developed using state-of-the-art software to facilitate immersive learning.



At the forefront of world teaching, the Re-learning method has managed to improve the overall satisfaction levels of professionals who complete their studies, with respect to the quality indicators of the best Spanish-speaking online university (Columbia University).

This methodology has trained more than 150,000 psychologists with unprecedented success in all clinical specialties. Our pedagogical methodology is developed in a highly competitive environment, with a university student body with a high socioeconomic profile and an average age of 43.5 years old.

Re-learning will allow you to learn with less effort and better performance, involving you more in your training, developing a critical mindset, defending arguments, and contrasting opinions: a direct equation for success.

In our program, learning is not a linear process, but rather a spiral (learn, unlearn, forget, and re-learn). Therefore, we combine each of these elements concentrically.

The overall score obtained by our learning system is 8.01, according to the highest international standards.



This program offers the best educational material, prepared with professionals in mind:



Study Material

All teaching material is produced by the specialists who teach the course, specifically for the course, so that the teaching content is highly specific and precise.

These contents are then applied to the audiovisual format, to create the TECH online working method. All this, with the latest techniques that offer high quality pieces in each and every one of the materials that are made available to the student.



Latest Techniques and Procedures on Video

TECH introduces students to the latest techniques, to the latest educational advances, to the forefront of current psychology. All of this in direct contact with students and explained in detail so as to aid their assimilation and understanding. And best of all, you can watch the videos as many times as you like.



Interactive Summaries

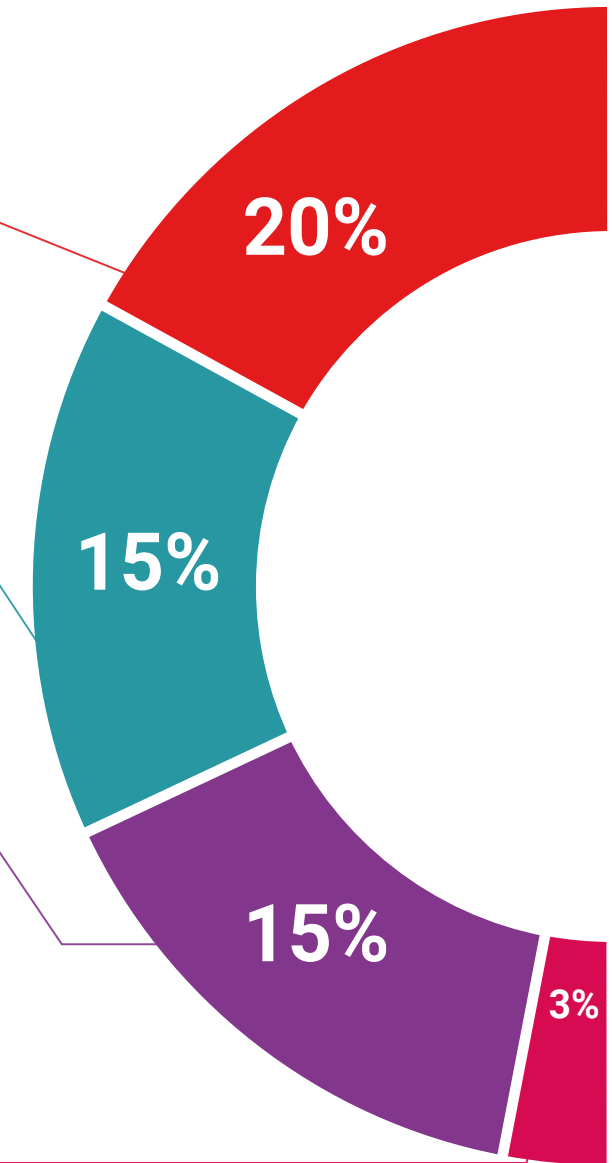
The TECH team presents the contents attractively and dynamically in multimedia lessons that include audio, videos, images, diagrams, and concept maps in order to reinforce knowledge.

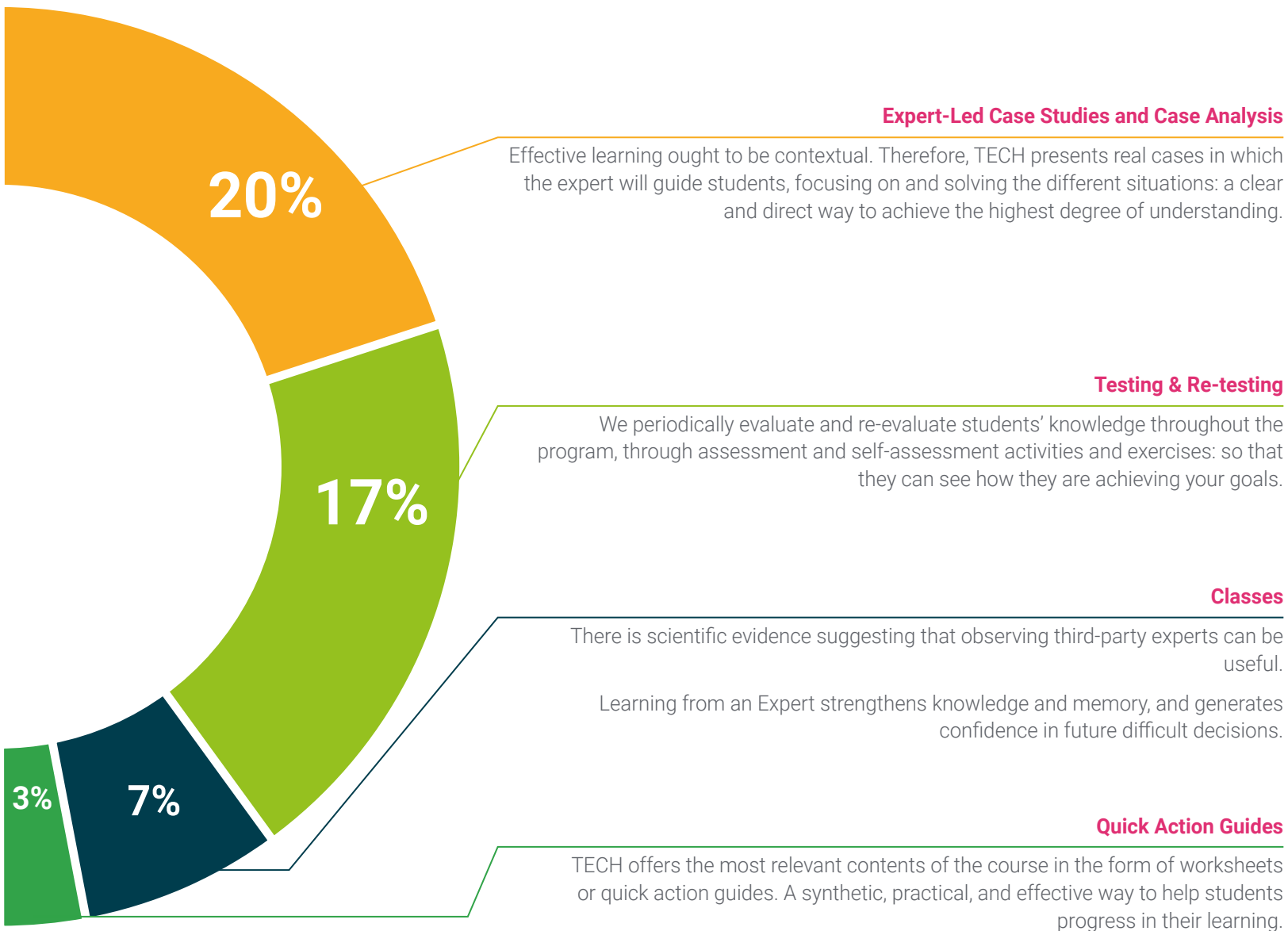
This exclusive multimedia content presentation training Exclusive system was awarded by Microsoft as a "European Success Story".



Additional Reading

Recent articles, consensus documents and international guidelines, among others. In TECH's virtual library, students will have access to everything they need to complete their course.





06

Certificate

This Postgraduate Certificate in Research in Clinical and Health Psychology guarantees students, in addition to the most rigorous and up-to-date education, access to a diploma for the Postgraduate Certificate issued by TECH Global University.



“

Successfully complete this training and receive your university degree without travel or laborious paperwork”

This private qualification will allow you to obtain a diploma for the **Postgraduate Certificate in Research in Clinical and Health Psychology** endorsed by TECH Global University, the world's largest online university.

TECH Global University, is an official European University publicly recognized by the Government of Andorra ([official bulletin](#)). Andorra is part of the European Higher Education Area (EHEA) since 2003. The EHEA is an initiative promoted by the European Union that aims to organize the international training framework and harmonize the higher education systems of the member countries of this space. The project promotes common values, the implementation of collaborative tools and strengthening its quality assurance mechanisms to enhance collaboration and mobility among students, researchers and academics.

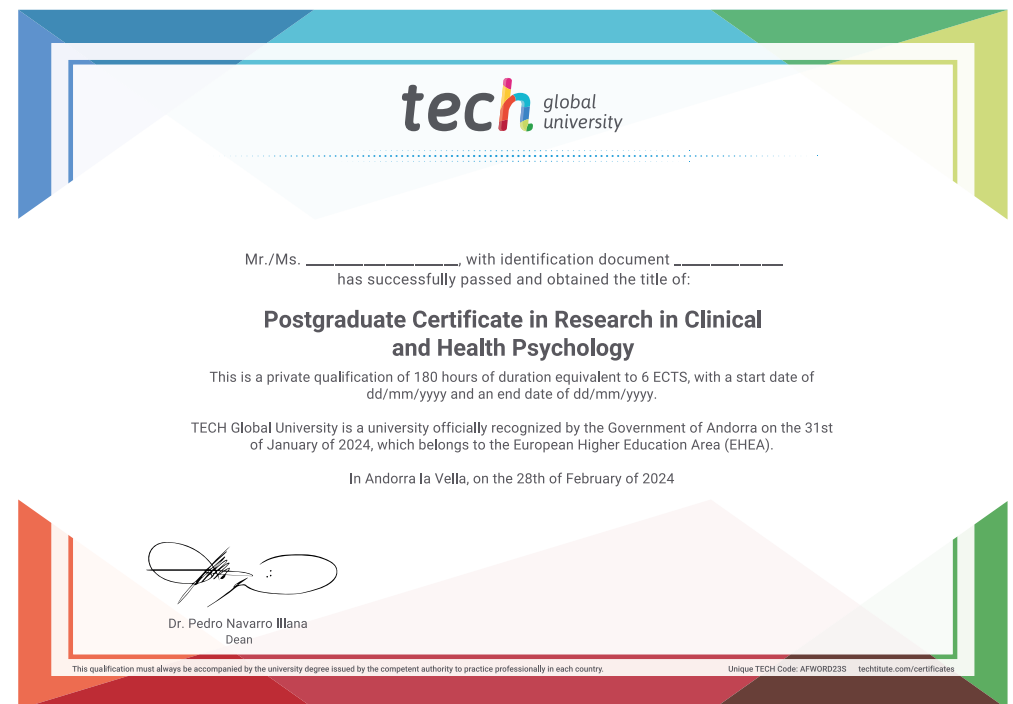
This **TECH Global University** private qualification, is a European program of continuing education and professional updating that guarantees the acquisition of competencies in its area of knowledge, providing a high curricular value to the student who completes the program.

Title: **Postgraduate Certificate in Research in Clinical and Health Psychology**

Modality: **online**

Duration: **6 weeks**

Accreditation: **6 ECTS**



future
health confidence people
education information tutors
guarantee accreditation teaching
institutions technology learning
community commitment
personalized service innovation
knowledge present
development languages
virtual classroom



Postgraduate Certificate Research in Clinical and Health Psychology

- » Modality: online
- » Duration: 6 weeks
- » Certificate: TECH Global University
- » Accreditation: 6 ECTS
- » Schedule: at your own pace
- » Exams: online

Postgraduate Certificate

Research in Clinical and Health Psychology