

# Postgraduate Certificate

## Psychodiagnosis and Psychological Assessment





## Postgraduate Certificate Psychodiagnosis and Psychological Assessment

- » Modality: online
- » Duration: 6 weeks
- » Certificate: TECH Global University
- » Credits: 6 ECTS
- » Schedule: at your own pace
- » Exams: online

Website: [www.techtitude.com/us/psychology/postgraduate-certificate/psychodiagnosis-psychological-assessment](http://www.techtitude.com/us/psychology/postgraduate-certificate/psychodiagnosis-psychological-assessment)

# Index

01

Introduction

---

p. 4

02

Objectives

---

p. 8

03

Course Management

---

p. 12

04

Structure and Content

---

p. 16

05

Methodology

---

p. 20

06

Certificate

---

p. 28

01

# Introduction

Knowing the difference between the evaluation and the clinical psychodiagnosis of the expert psychologist is essential in order to achieve an appropriate bond with the patient or the individual being assessed. Very often the same assessment techniques are used, but the use and especially the role of the psychologist is and should be different. Failure to take this into account leads to errors and failures in one specialty or another.



“

*The aim of this Postgraduate Certificate is to achieve specialist knowledge in this area. The course is unique in its design, allowing the psychologist to successfully master the process of the psychological interview”*

Psychological expertise requires a certain neutrality and a separation from the patient that is very different from the bond formed in the clinical examination. This Postgraduate Certificate is unique and essential for psychologists since it teaches them how to maintain an appropriate link in each moment and in each specialty.

The most important is not so much knowing what you have to do, but being able to do it. This Postgraduate Certificate trains the psychologist to achieve the objective of being a specialist in both clinical and forensic expert evaluation.

This **Postgraduate Certificate in Psychodiagnosis and Psychological Assessment** has the most complete and up-to-date scientific program on the market. The most important features of the Postgraduate Certificate are:

- ♦ Clinical cases presented by experts in psychology
- ♦ The graphic, schematic, and eminently practical contents with which they are created provide scientific and practical information on the disciplines that are essential for professional practice.
- ♦ New diagnostic and therapeutic developments in the area of Psychodiagnosis and Psychological Assessment.
- ♦ An algorithm-based interactive learning system for decision-making in the clinical situations presented throughout the course.
- ♦ With special emphasis on evidence-based psychology and research methodologies in psychology
- ♦ Content that is accessible from any fixed or portable device with an Internet connection.



*Update your knowledge through the Postgraduate Certificate in Psychodiagnosis and Psychological Assessment, in a practical way and adapted to your needs"*





*This Postgraduate Certificate may be the best investment you can make when choosing a refresher program for two reasons: in addition to updating your knowledge in Psychodiagnosis and Psychological Assessment you will obtain a Postgraduate Certificate from TECH Technological University"*

*The course includes real clinical cases and exercises to bring the development of the course closer to the psychologist's clinical practice.*

Forming part of the teaching staff is a group of professionals in the world of psychology who bring to this course their work experience, as well as a group of renowned specialists, recognised by esteemed scientific communities.

The multimedia content developed with the latest educational technology will provide the professional with situated and contextual learning, i.e., a simulated environment that will provide an immersive training program to train in real situations.

Problem-Based Learning underpins this program design, and the doctor must use it to try and solve the different professional practice situations that arise throughout the Postgraduate Certificate. For this reason, you will be assisted by an innovative, interactive video system created by renowned and experienced experts in the field of psychology with extensive teaching experience.



# 02 Objectives

The principal objective of the program is the development of both theoretical and practical learning, so that the professional can master, in a practical and rigorous way, the study of Psychodiagnosis and Psychological Assessment.





“

*This program will provide you with the skills to carry out your psychological praxis with confidence and will help you to grow both personally and professionally”*



## General Objectives

---

- ♦ Train the psychologist in the knowledge of psychodiagnosis, assessment and reporting in their work as a health professional or in the field of psychological evaluation.
- ♦ Update the knowledge of the expert psychologist in the various sub-specialties in the field of psychodiagnosis, psychological evaluation and expertise.
- ♦ Promote the knowledge of the instruments that discriminate between simulation and lying, as well as to know how to control the emotional state of the patient who is undergoing an expert appraisal.
- ♦ Motivate the psychology professional to undergo continuous training and develop their scientific knowledge.
- ♦ Master understanding of the code of ethics and the client's status, as well as all the regulations that must be met in order to perform their work within the law.



*Make the most of the opportunity and take the step to get up-to-date on the latest developments in Family Therapy for Psychologists”*





## Specific Objectives

---

- ♦ Teach the student the instruments of psychodiagnosis and psychological expertise that are currently approved by scientific research.
- ♦ Provide knowledge and above all, the skills to establish an appropriate link when carrying out psychodiagnosis and expert evaluation.
- ♦ Manage the interferences that occur in the assessment, knowing how to differentiate the desirability of the subject being evaluated from their real psychological state.
- ♦ Identify the most appropriate set of instruments for each case of expert evaluation.
- ♦ Analyze the implications of the evaluation and expert assessment for each one of the patients.
- ♦ Verify the implication of expertise within the professional framework of psychologists.
- ♦ Address new perspectives of psychological assessment.
- ♦ Development of the diagnostic itinerary both from the D.S.M. 5 as well as by C.I.E-10



*This will provide key training to advance your career."*



03

# Course Management

This program includes highly regarded health professionals in the field of psychology in its teaching staff, who bring the experience of their work to this training.

In addition, renowned specialists, members of prestigious national and international scientific communities, are involved in designing and preparing the program.



“

*Learn the latest advances in Psychodiagnosis and Psychological Assessment from leading professionals"*

## Management



### Dr. Gascon Martin, Laura

- ♦ European specialist psychologist in Psychotherapy for the EFPA in the CEP Health Center in Talavera de la Reina.
- ♦ Specialist in Forensic and Legal Psychology
- ♦ Psychologist of the Courts 1 and 2 of Toledo
- ♦ Coordinator in Toledo of emergency intervention and psychological assistance plan
- ♦ Master's Degree in Time-Limited Psychotherapy and Health Psychology
- ♦ Expert in Adult Psychotherapy.
- ♦ Director of the Postgraduate Diploma in Psychodiagnosis and Legal Expertise from the European Institute of Time-Limited Psychotherapies
- ♦ Coordinator of the gender violence plan at the national level of the Society for Time Limited Psychotherapies

## Professors

### Dr. De Dios González, Antonio

- ♦ Director of Avatar Psychologists
- ♦ Director of the Psychology Department of Quirón Hospital of Marbella.
- ♦ Master's Degree in Time-Limited Psychotherapy and Health Psychology from the European Institute of Time-Limited Psychotherapies (I.E.P.T.L.).
- ♦ Transpersonal Therapist by the Spanish School of Transpersonal Development
- ♦ E.F.T. Specialist by the World Center for EFT
- ♦ Master's Degree in Neuro-Linguistic Programming (N.L.P.) from Richard Bandler's Society of Neuro-Linguistic Programming
- ♦ Specialist in Clinical Hypnosis and Relaxation

### Roldan, Lucia

- ♦ Health Psychologist
- ♦ Cognitive-behavioral intervention specialist
- ♦ Master's Degree in Time-Limited Psychotherapy and Health Psychology
- ♦ Expert in Energy Therapy Intervention

### Dr. Gandarias, Gorka

- ♦ Health Psychologist
- ♦ European specialist psychologist in Psychotherapy from the EFPA in Vitoria (Spain)
- ♦ Master's Degree in Time-Limited Psychotherapy and Health Psychology
- ♦ Expert in intervention in bizarre behavior and drug addiction.





**González, Mónica**

- ♦ Psychologist in charge of the Department of Child and Adolescent Psychology in the Quirón Hospital and Avatar Psychologists in Marbella.
- ♦ Master's degree in Time-Limited Psychotherapy and Health Psychology by the European Institute of Time-Limited Psychotherapy.

**Casado, Maria**

- ♦ Health Psychologist
- ♦ Specialist in Family and Couple Intervention in the Spanish Police Confederation in Madrid
- ♦ Master's Degree in Time-Limited Psychotherapy and Health Psychology

**Dr. Martínez-Lorca, Manuela**

- ♦ PhD in Psychology from the University of Castilla-La Mancha
- ♦ Health Psychologist
- ♦ Master's Degree in Time-Limited Psychotherapy and Health Psychology from the European Institute of Time-Limited Psychotherapy
- ♦ Specialist in Clinical Hypnosis and Relaxation

**Furelos, Maribel**

- ♦ Psychologist specializing in Clinical Psychology
- ♦ Sexologist in Osakidetza at the Santurce outpatient clinic
- ♦ Master's Degree in Time-Limited Psychotherapy and Health Psychology

**Soria, Carmen**

- ♦ European specialist psychologist in Psychotherapy at the Spanish Police Confederation health center Madrid
- ♦ Head of Psychosocial Unit
- ♦ Master's Degree in Time-Limited Psychotherapy and Health Psychology.
- ♦ Specialist in chronic patients. Specialist in Clinical Hypnosis and Relaxation

04

# Structure and Content

The structure of the contents has been designed by a team of professionals who recognise the implications of methodology in psychology, aware of the relevance of current training to treat the patient with psychological disorders or needs with quality teaching using new educational technologies.





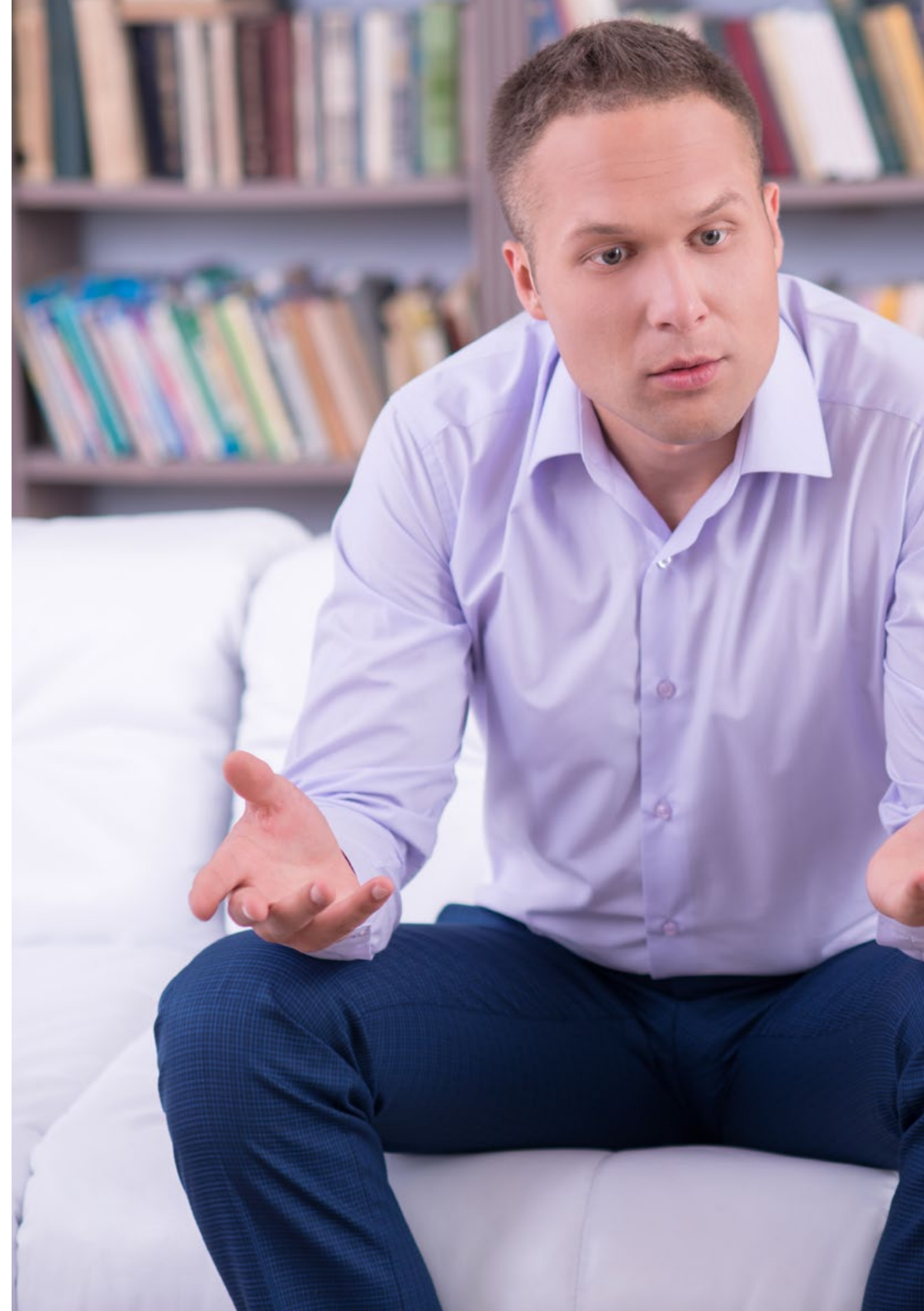
“

*This Postgraduate Certificate in Psychodiagnosis and Psychological Assessment has the most complete and up-to-date scientific program on the market”*



## Module 1. Psychodiagnostics and Psychological Evaluation

- 1.1. Substantive Considerations
  - 1.1.1. Psychodiagnostics
  - 1.1.2. Scientific Method
  - 1.1.3. Experimental Method
  - 1.1.4. Correlational Method
  - 1.1.5. Longitudinal Method
  - 1.1.6. Models
  - 1.1.7. Manifest Behavior Observation
- 1.2. Diagnosis as a Mobilizer of the Expert-Subject Connection
- 1.3. Reason for Diagnosis
  - 1.3.1. Phases
  - 1.3.2. The Interview as a First Encounter and Framing
  - 1.3.3. Purposes of the Interview
  - 1.3.4. Factors Affecting the Process
- 1.4. Rights and Duties of the Evaluator/Appraiser
  - 1.4.1. Psychologist's Ethics Code
- 1.5. Anxieties, Hopes and Needs of the Evaluator/Appraiser Producing Harm and Making a Mistake
  - 1.5.1. Anxieties and Fears
- 1.6. Needs and Anxieties of the Evaluated Person
  - 1.6.1. Expectations
  - 1.6.2. Anxieties
- 1.7. Psychodiagnostics Objectives
  - 1.7.1. Differences and Interactions
  - 1.7.2. Procedure Structure
  - 1.7.3. Diagnostic Process Framework
  - 1.7.4. Main Objectives
  - 1.7.5. Secondary Objectives
  - 1.7.6. Achieve a Singular Bond
  - 1.7.7. Encourage the Subject's Resources
  - 1.7.8. Gather Valid Information for the Process





- 1.8. Psychodiagnostics Scenarios
  - 1.8.1. Subject's Mental Functions
  - 1.8.2. Biological Imbalances
  - 1.8.3. Interaction of the Subject in Their Microcontext, Mesocontext and Macrocontext
- 1.9. Analysis of Suffering Through its Symptoms
  - 1.9.1. Suffering and the Mind
- 1.10. Psychodiagnostics in a Legal Setting
  - 1.10.1. Expert Evidence
  - 1.10.2. Fields of Action of the Legal Psychologist



*A unique, key, and decisive  
experience to boost your  
professional development"*

05

# Methodology

This training provides you with a different way of learning. Our methodology uses a cyclical learning approach: ***Re-learning***.

This teaching system is used in the most prestigious medical schools in the world, and major publications such as the ***New England Journal of Medicine*** have considered it to be one of the most effective.





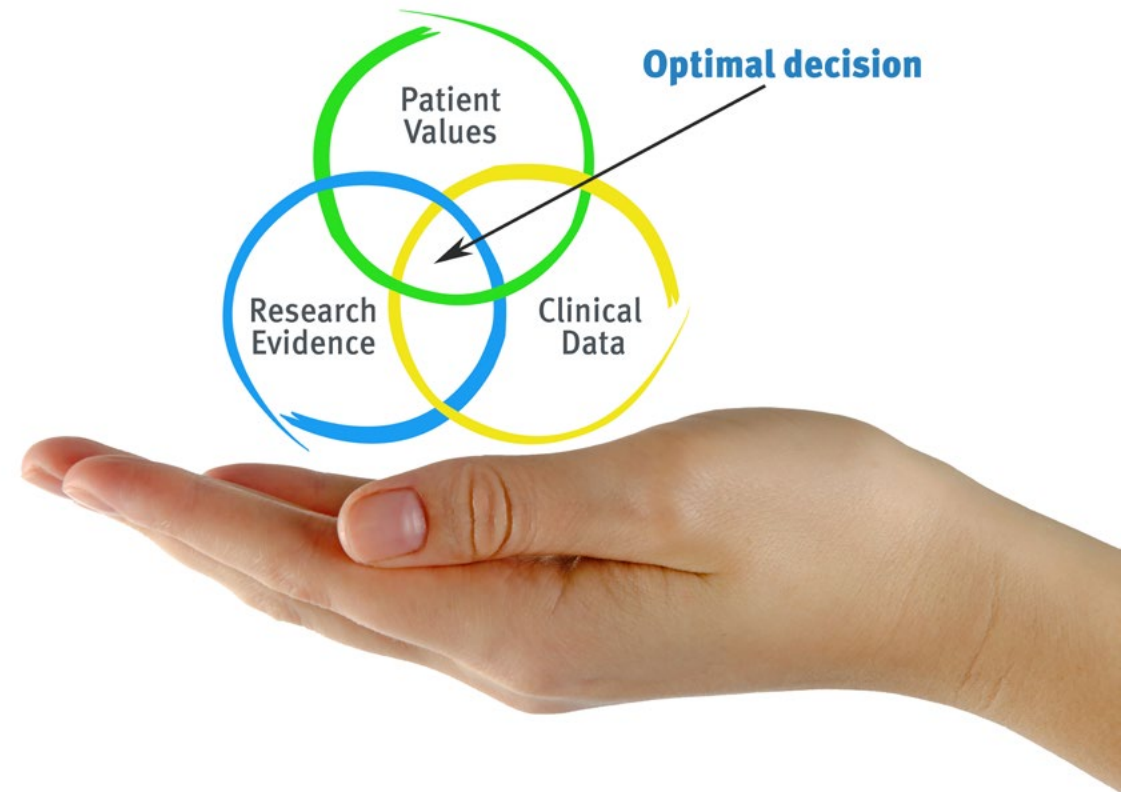
“

*Discover Re-learning, a system that abandons conventional linear learning, to take you through cyclical teaching systems: a way of learning that has proven to be extremely effective, especially in subjects that require memorization"*

## At TECH we use the Case Method

In a given clinical situation, what would you do? Throughout the program you will be presented with multiple simulated clinical cases based on real patients, where you will have to investigate, establish hypotheses and, finally, resolve the situation. There is abundant scientific evidence on the effectiveness of the method. Psychologists learn better, faster, and more sustainably over time.

*With TECH, psychologists can experience a way of learning that is shaking the foundations of traditional universities around the world.*



According to Dr. Gervas, the clinical case is the annotated presentation of a patient, or group of patients, which becomes a "case", an example or model that illustrates some peculiar clinical component, either because of its teaching power or because of its uniqueness or rarity. It is essential that the case is based on current professional life, trying to recreate the real conditions in the psychologist's professional practice.

“

*Did you know that this method was developed in 1912 at Harvard for law students? The case method consisted of presenting students with real-life, complex situations for them to make decisions and justify their decisions on how to solve them. In 1924, Harvard adopted it as a standard teaching method.*

The effectiveness of the method is justified by four fundamental achievements:

1. Psychologists who follow this method not only grasp concepts, but also develop their mental capacity by means of exercises to evaluate real situations and apply their knowledge.
2. The learning is solidly focused on practical skills that allow the psychologist to better integrate the knowledge into clinical practice.
3. Ideas and concepts are understood more efficiently, given that the example situations are based on real-life.
4. Students like to feel that the effort they put into their studies is worthwhile. This then translates into a greater interest in learning and more time dedicated to working on the course.



## Re-Learning Methodology

At TECH we enhance the Harvard case method with the best 100% online teaching methodology available: Re-learning.

Our University is the first in the world to combine the study of clinical cases with a 100% online learning system based on repetition, combining a minimum of 8 different elements in each lesson, which represent a real revolution with respect to simply studying and analyzing cases.

*The psychologist will learn through real cases and by solving complex situations in simulated learning environments. These simulations are developed using state-of-the-art software to facilitate immersive learning.*





At the forefront of world teaching, the Re-learning method has managed to improve the overall satisfaction levels of professionals who complete their studies, with respect to the quality indicators of the best Spanish-speaking online university (Columbia University).

With this methodology we have trained more than 150,000 psychologists with unprecedented success, in all clinical specialties. All this in a highly demanding environment, where the students have a strong socio-economic profile and an average age of 43.5 years.

*Re-learning will allow you to learn with less effort and better performance, involving you more in your training, developing a critical mindset, defending arguments, and contrasting opinions: a direct equation to success.*

In our program, learning is not a linear process, but rather a spiral (we learn, unlearn, forget, and re-learn). Therefore, we combine each of these elements concentrically.

The overall score obtained by our learning system is 8.01, according to the highest international standards.



In this program you will have access to the best educational material, prepared with you in mind:



#### Study Material

All teaching material is produced by the specialists who teach the course, specifically for the course, so that the teaching content is really specific and precise.

This content is then adapted in an audiovisual format that will create our way of working online, with the latest techniques that allow us to offer you high quality in all of the material that we provide you with.



#### Latest Techniques and Procedures on Video

We introduce you to the latest techniques, with the latest educational advances, and to the forefront of psychology. All this, in first person, with the maximum rigor, explained and detailed for your assimilation and understanding. And best of all, you can watch them as many times as you want.



#### Interactive Summaries

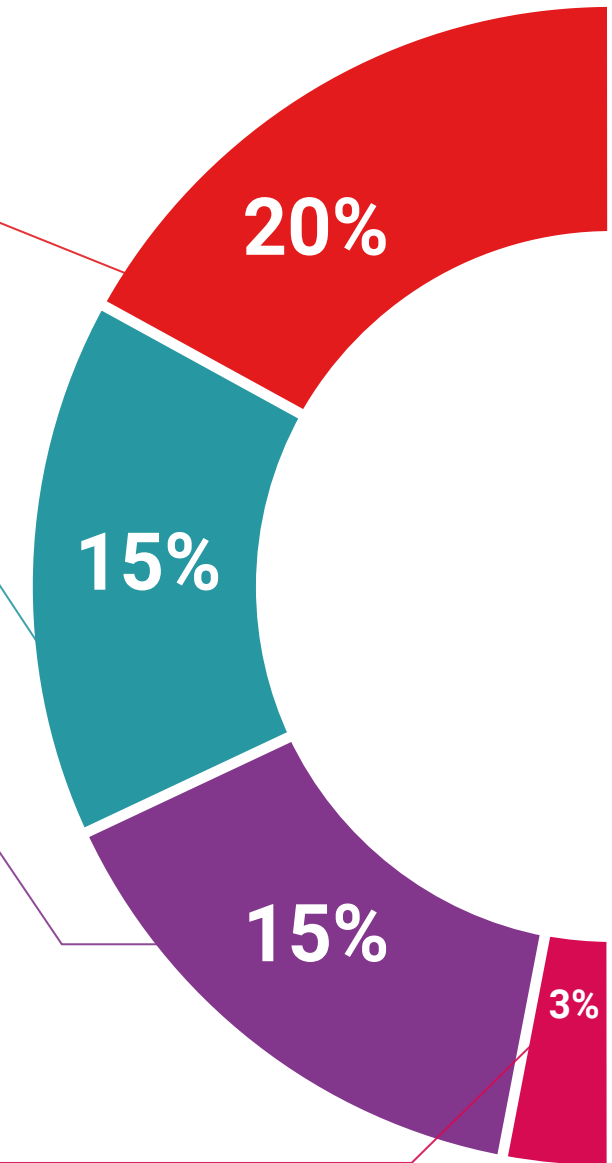
We present the contents attractively and dynamically in multimedia lessons that include audio, videos, images, diagrams, and concept maps in order to reinforce knowledge.

This unique multimedia content presentation training system was awarded by Microsoft as a "European Success Story".

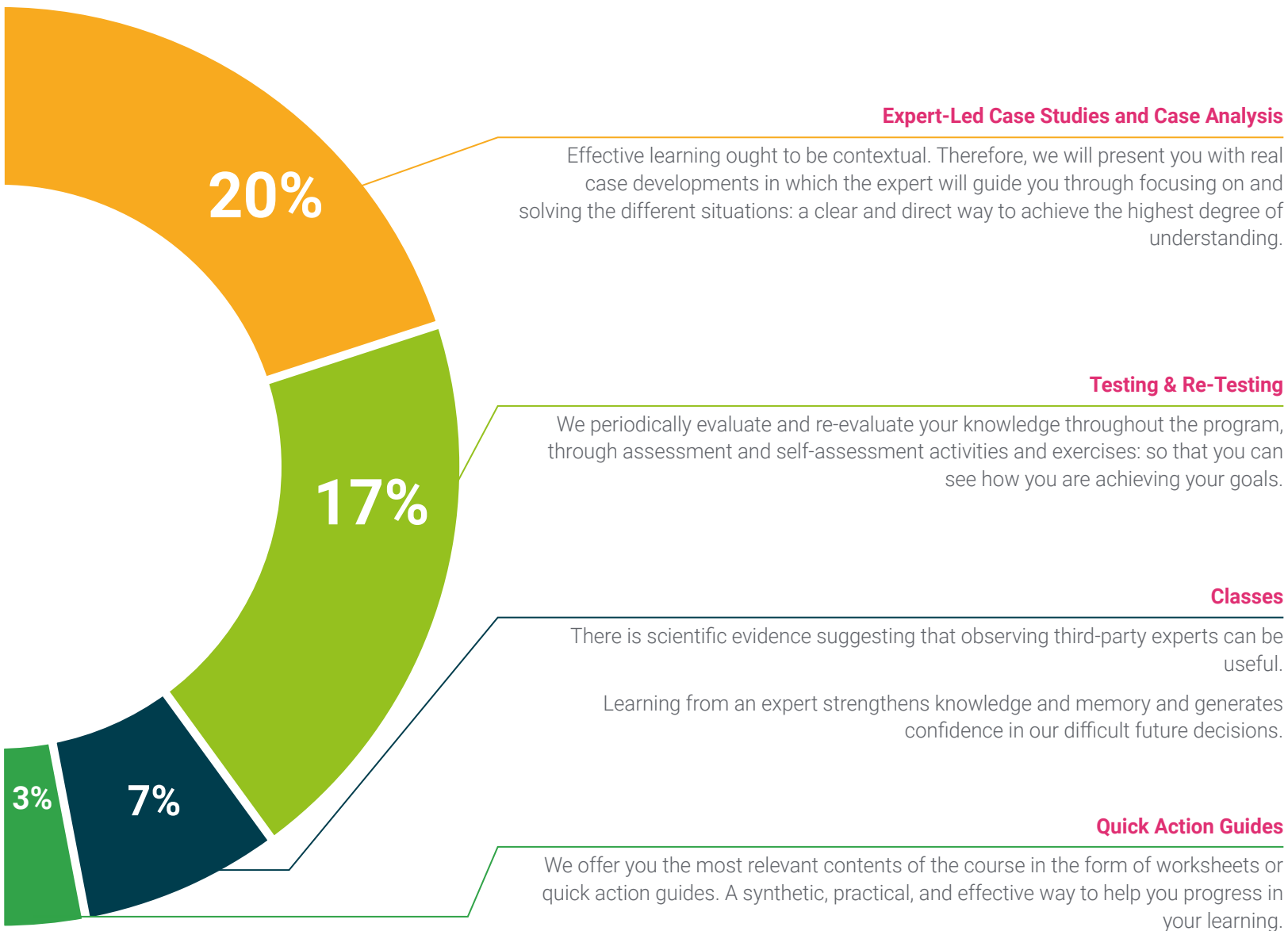


#### Additional Reading

Recent articles, consensus documents, international guides. in our virtual library you will have access to everything you need to complete your training.







06

# Certificate

The Postgraduate Certificate in Psychodiagnosis and Psychological Assessment guarantees you, in addition to the most rigorous and updated training, access to a Postgraduate Certificate issued by TECH Global University..



“

*Successfully complete this training and receive your diploma without the hassle of travel or paperwork”*

This private qualification will allow you to obtain a **Postgraduate Certificate in Psychodiagnosis and Psychological Assessment** endorsed by **TECH Global University**, the world's largest online university.

**TECH Global University** is an official European University publicly recognized by the Government of Andorra ([official bulletin](#)). Andorra is part of the European Higher Education Area (EHEA) since 2003. The EHEA is an initiative promoted by the European Union that aims to organize the international training framework and harmonize the higher education systems of the member countries of this space. The project promotes common values, the implementation of collaborative tools and strengthening its quality assurance mechanisms to enhance collaboration and mobility among students, researchers and academics.

This **TECH Global University** private qualification is a European program of continuing education and professional updating that guarantees the acquisition of competencies in its area of knowledge, providing a high curricular value to the student who completes the program.

Title: **Postgraduate Certificate in Psychodiagnosis and Psychological Assessment**

Modality: **online**

Duration: **6 weeks**

Accreditation: **6 ECTS**





future  
health confidence people  
education information tutors  
guarantee accreditation teaching  
institutions technology learning  
community commitment  
personalized service innovation  
knowledge present  
online training  
development languages  
virtual classroom



## Postgraduate Certificate Psychodiagnosis and Psychological Assessment

- » Modality: online
- » Duration: 6 weeks
- » Certificate: TECH Global University
- » Credits: 6 ECTS
- » Schedule: at your own pace
- » Exams: online

# Postgraduate Certificate

## Psychodiagnosis and Psychological Assessment

