

Hybrid Professional Master's Degree

Home Hospitalization



Hybrid Professional Master's Degree Home Hospitalization

Modality: Hybrid (Online + Clinical Internship)

Duration: 12 months

Certificate: TECH Technological University

Teaching Hours: 1,620 h.

Website: www.techtute.com/us/physiotherapy/hybrid-professional-master-degree/hybrid-professional-master-degree-home-hospitalization

Index

01

Introduction

p. 4

02

Why Study this Hybrid
Professional Master's Degree?

p. 8

03

Objectives

p. 12

04

Skills

p. 18

05

Course Management

p. 22

06

Educational Plan

p. 28

07

Clinical Internship

p. 38

08

Where Can I Do the
Clinical Internship?

p. 44

09

Methodology

p. 48

10

Certificate

p. 56

01

Introduction

Home hospitalization has become an increasingly important need in the field of physical therapy. The possibility of providing care to patients in their own home not only improves their quality of life, but also reduces the cost of medical and hospital care. For this reason, this program perfectly combines the most advanced syllabus, developed by top level professionals, with the practice in a distinguished clinical center and guided by expert tutors in this field. In this way, students will be able to make a complete update, integrating the latest techniques and technologies to provide a more advanced and effective care to patients in their own home.



“

A Hybrid Professional Master's Degree that will allow you to manage complex physiotherapy situations in the home environment with our highly specialized program”

Home Hospitalization is a healthcare model that has become increasingly relevant today due to technological advances and the need to provide more personalized and effective care to patients. This model focuses on providing medical and rehabilitation care in the patient's home, avoiding hospitalization in a medical center.

In this context, physiotherapy plays a fundamental role in home hospitalization, since professionals in this area are in charge of evaluating and treating the patient's physical limitations, avoiding hospitalization in a medical center and treat the patients' physical limitations, thus improving their quality of life. That is why this Hybrid Professional Master's Degree in Home Hospitalization of TECH is an essential program for physical therapy professionals who wish to update their knowledge in this field.

Therefore, this university qualification focuses on providing students with the necessary tools to perform in Home Hospitalization in an effective and efficient manner, with a focus on personalized patient care. In addition, the innovative didactic material available 24 hours a day from any digital device allows students to adapt their study schedule to their needs.

In addition, the culmination of this academic experience comes in its final stretch, where the graduate will have the opportunity to perform an internship of 3 weeks in a clinical center specialized in this field. A period, where they will be surrounded by the best experts and will be able to integrate both the concepts dealt with in the theoretical framework, as well as the procedures used by real specialists.

Undoubtedly, an ideal opportunity for a complete update, through an unparalleled, flexible academic option that meets the real needs of updating physiotherapists.

This **Hybrid Professional Master's Degree in Home Hospitalization** contains the most complete and up-to-date scientific program on the market. The most important features include:

- ♦ Development of more than 100 cases presented by physiotherapy professionals who are experts in the approach to patients in their homes
- ♦ The graphic, schematic, and practical contents with which they are created, provide scientific and practical information on the disciplines that are essential for professional practice
- ♦ Patient assessment and integration of the latest recommendations to successfully integrate therapeutic procedures
- ♦ Comprehensive systematized action plans for the main pathologies
- ♦ Presentation of practical workshops on diagnostic techniques
- ♦ An algorithm-based interactive learning system for decision-making in the clinical situations presented throughout the course
- ♦ Approach to the different injuries according to the specific characteristics of the population
- ♦ With a special emphasis on evidence-based medicine and research methodologies in recovery of patients
- ♦ All of this will be complemented by theoretical lessons, questions to the expert, debate forums on controversial topics, and individual reflection assignments
- ♦ Content that is accessible from any fixed or portable device with an Internet connection
- ♦ Furthermore, you will be able to carry out a clinical internship in one of the best clinical and centers

“*Improve your skills as a physiotherapist in Home Hospitalization with our Hybrid Professional Master's Degree*”

In this proposal for a Professional Master's Degree, of a professionalizing nature and hybrid learning modality, the program is aimed at updating psychology professionals who perform their functions in centers Clinical centers and hospitals, and who require a high level of qualification. The contents are based on the latest scientific evidence, and oriented in an educational way to integrate theoretical knowledge into practice, and the theoretical-practical elements will facilitate knowledge update and decision-making in patient management.

Thanks to the multimedia content, developed with the latest educational technology, FISIOTERAPIA professionals will benefit from situated and contextual learning, i.e., a simulated environment that will provide immersive learning programmed to train in real situations. This program is designed around Problem-Based Learning, whereby the physician must try to solve the different professional practice situations that arise during the course. For this purpose, students will be assisted by an innovative interactive video system created by renowned and experienced experts.

Get a comprehensive view of home care and delve into the specific needs of each patient with this university program.

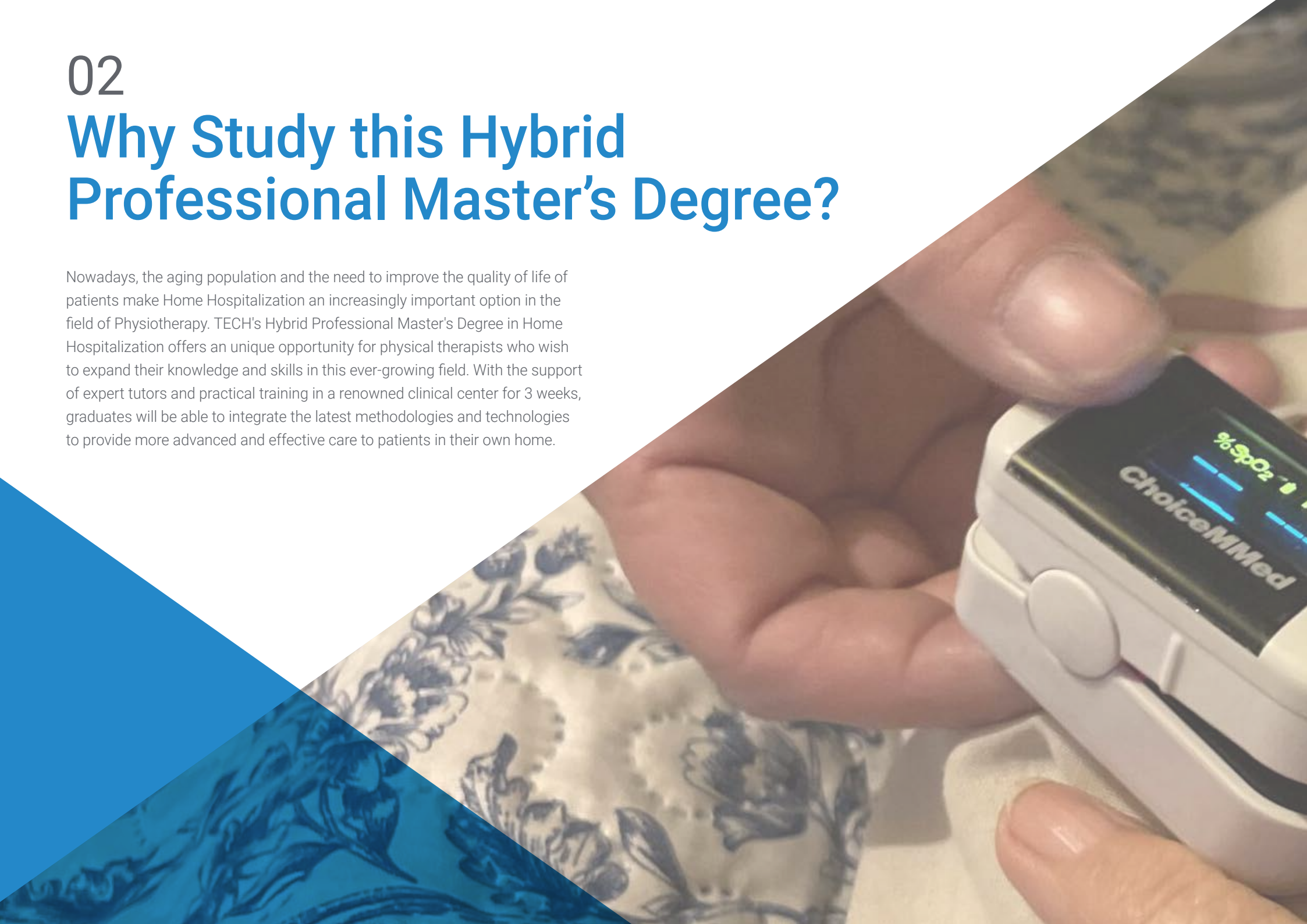
Develop communication and empathy skills to enhance your relationship with patients and their families in home care.



02

Why Study this Hybrid Professional Master's Degree?

Nowadays, the aging population and the need to improve the quality of life of patients make Home Hospitalization an increasingly important option in the field of Physiotherapy. TECH's Hybrid Professional Master's Degree in Home Hospitalization offers an unique opportunity for physical therapists who wish to expand their knowledge and skills in this ever-growing field. With the support of expert tutors and practical training in a renowned clinical center for 3 weeks, graduates will be able to integrate the latest methodologies and technologies to provide more advanced and effective care to patients in their own home.





“

TECH gives you a unique opportunity to access a specialized and distinguished center in Home Hospitalization”

1. Updating from the Latest Technology Available

Nowadays, the use of advanced technology in Physiotherapy can be of great importance to improve the effectiveness of treatments and speed up patients' recovery times. Through this program, graduates will be able to keep up to date with the latest technological advances in this field, integrating the most recent technical progress. All this will result in a more effective and quality care for the health of the people treated.

2. Gaining In-depth Knowledge from the Experience of Top Specialists

Students of this educational option will have access to a team of highly trained specialists both in the theoretical phase and in clinical practice. A faculty that will be available to answer any questions about the program and, during your internship in a renowned clinical center, where you will be guided by experts in Physiotherapy. An experience that will allow you to incorporate the latest diagnostic and therapeutic methodologies and procedures, improving your skills and experience in this field.

3. Entering First-Class Clinical Environments

TECH makes a careful selection of the Internship Program centers available to its graduates, ensuring that they have access to first class clinical spaces in the field of Physiotherapy. In these places, advanced therapeutic techniques are applied that will allow them to experience first-hand the most rigorous and comprehensive methodology, always based on the latest scientific evidence.





4. Combining the Best Theory with State-of-the-Art Practice

The Hybrid Professional Master's Degree in Home Hospitalization is a perfect combination of theory and practice, designed especially for physiotherapists who are looking to update their skills. A program that takes place in an outstanding clinical environment, which will allow you to integrate all the concepts addressed in an optimal way in your daily practice. An excellent choice for those looking for a complete update in this field.

5. Expanding the Boundaries of Knowledge

TECH is the world's largest digital educational institution that offers specialists the unparalleled opportunity to enhance their skills and knowledge through internships at prestigious clinical centers both nationally and internationally. In this way, students can significantly expand their knowledge and gain a unique and valuable experience, surrounded by world-class experts.

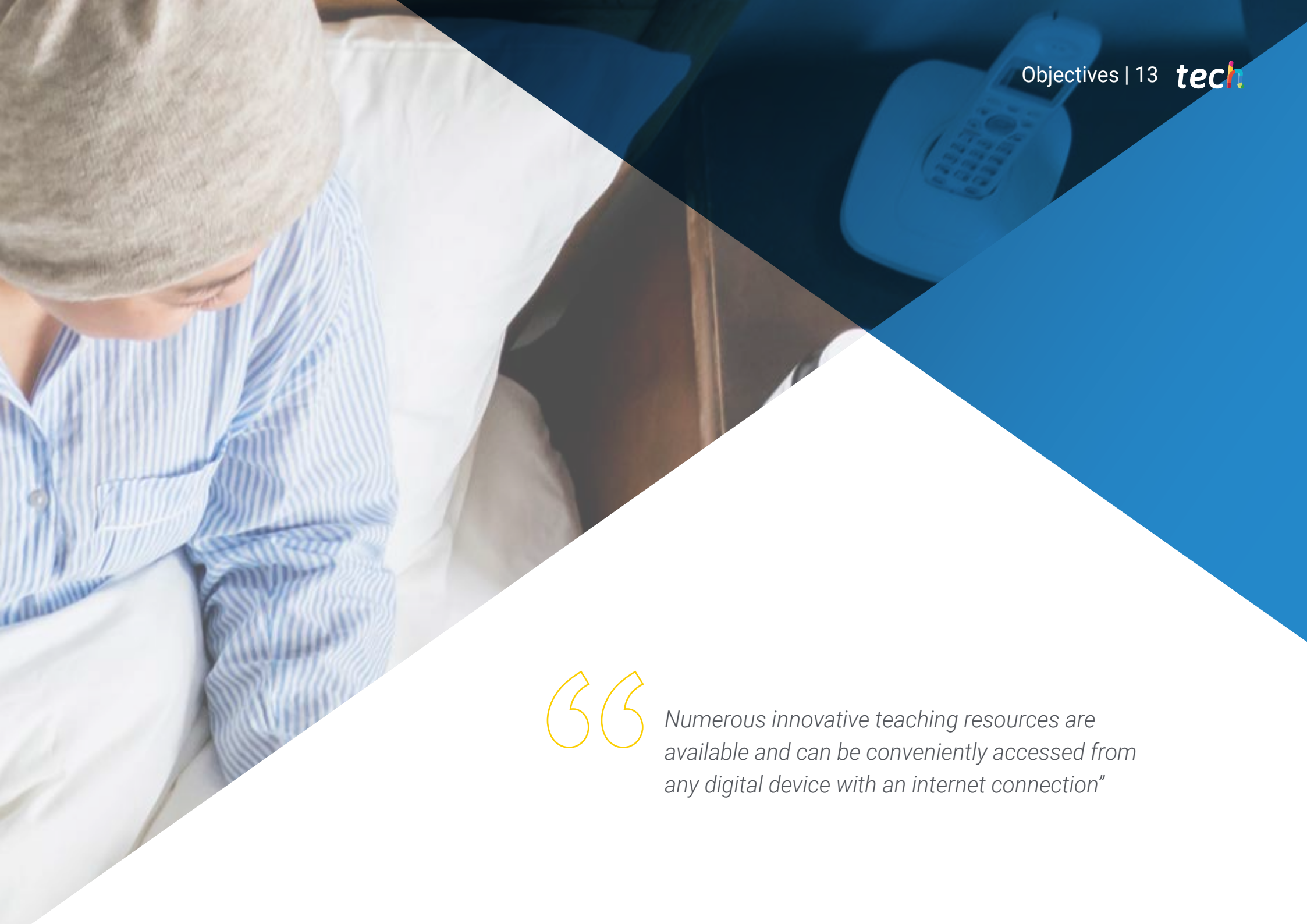


You will have full practical immersion at the center of your choice"

03 Objectives

The primary goal of this educational option is to update graduates on the procedures for the evaluation, diagnosis and treatment of conditions that primarily affect patients in their homes. To achieve this objective, a fully online theoretical framework and the best didactic material are used, allowing students to update their knowledge effectively. In addition, the theoretical training is complemented by a practical period of 3 weeks, in which the skills acquired during the course can be directly applied.





“

Numerous innovative teaching resources are available and can be conveniently accessed from any digital device with an internet connection”



General Objective

- The objective of the Hybrid Professional Master's Degree in Home Hospitalization is to provide an update in the field of home care for patients with physiotherapeutic needs. Participants will delve into the diagnosis, treatment and monitoring of pathologies that require home care, as well as the management and coordination of multidisciplinary teams. In this way, it will contribute to improve the quality of life of patients and promote a more efficient and humanized health care



*Learn more about new tools
for patient care at home with
our specialized program"*





Specific Objectives

Module 1. Organization of Home Hospitalization

- ♦ Develop skills for the implementation of care plans to prevent these pathologies
- ♦ Assess and interpret the characteristics and special conditions of patients with hospital needs, but in their home
- ♦ Provide students with advanced, in-depth, up-to-date and multidisciplinary information that allows them to comprehensively approach the process of health and illness in the home

Module 2. General Aspects. Research and Teaching

- ♦ Assess patient for admission or transfer to primary care
- ♦ Manage discharges, transfers and hospital readmissions
- ♦ Manage cases according to medical history and legality

Module 3. Care for Different Specific Types of Patients

- ♦ Identify needs according to patient age
- ♦ Manage complex chronic patients
- ♦ Address psychiatric patients by managing the particularities of mental health monitoring at home

Module 4. Management of Subsidiary Syndromes at Home

- ♦ Integrate knowledge of admission and exclusion criteria
- ♦ Manage the main symptoms and complications in post-surgical patients
- ♦ Diagnose and apply the adjusted treatment of diseases with their own characteristics at home

Module 5. Management of Infections at Home Criteria for Admission and Exclusion, Management, Discharge Criteria

- ♦ Manage infectious diseases in the home setting
- ♦ Integrate knowledge of common types of diseases
- ♦ Categorize admission and exclusion criteria for patient referral

Module 6. Palliative Care in Oncological Patients

- ♦ Highlight the importance of morbidity and mortality due to multi-resistant infections in complex patients with special needs
- ♦ Explain the most common pathogenic mechanisms and neoplasms associated with advanced palliative needs
- ♦ Study the current pathophysiological elements between non-transmissible chronic diseases and infections
- ♦ Gain an in-depth understanding of the most innovative clinical, diagnostic and therapeutic elements of diseases at home

Module 7. Pain Management in Home Hospitalization

- ♦ Know the concept of pain and identify other associated factors involved in pain
- ♦ Determine types of pain according to physiopathology
- ♦ Recognize the main clinical syndromes with possibilities of treatment and follow-up from the Home Hospitalization

Module 8. Nutrition in Home Hospitalization

- ♦ Review basic concepts in nutrition for the hospitalized patient at home
- ♦ Diagnose, manage and nourish geriatric patients
- ♦ Care based on the nursing care plan and apply health education to the patient and the family

Module 9. Special Treatments

- ♦ Explain the care of complex chronic patients from the home, in order to avoid and/ or reduce the severity of flare-ups
- ♦ Identify the important role of the management figure in cases both in hospital as well as in the community
- ♦ Highlight the need to consider vaccination in patients with special needs in order to reduce the burden of disease

Module 10. Pediatric Patient in Home Hospitalization

- ♦ Provide the necessary coping skills for the managing hospitalization stress in early stages of life
- ♦ Complete the specific home assessment involving the family
- ♦ Process procedures, classification and specific considerations for the pediatric patient





Module 11. Preventative Medicine in Home Hospitalization

- ♦ Justify the importance of chronic disease management in times of stability for the reduction of morbidity and mortality, emergency room visits and conventional admissions
- ♦ Add knowledge about germs and measures against them at home
- ♦ Implement different treatments according to therapeutic suitability

Module 12. Therapeutic Techniques

- ♦ Highlighting palliative needs as one of the fields with the greatest progression in home hospitalization
- ♦ Develop the concept of dignified death, nursing care and accompaniment during the last moments of life
- ♦ Integrate knowledge of the latest therapeutic techniques in the field of home nursing

Module 13. Diagnostic Techniques

- ♦ Provide training and practical theoretical improvement that will enable a reliable clinical diagnosis supported by the efficient use of diagnostic methods to indicate an effective integral treatment
- ♦ Provide theoretical content on the latest techniques in hospital home treatment

04 Skills

This program offers students the possibility of increasing their competencies and advanced skills in the care of patients at home. Therefore, from a theoretical-practical approach, graduates will enhance their ability to manage complex situations in physiotherapy in the home environment, develop skills for teamwork and leadership in home care, enhance their capacity for personalized attention or improve home care of patients.



“

Case study simulations will provide you with a real and direct approach to situations you may face as a physiotherapist”



General Skills

- ♦ Apply epidemiological and clinical methods in collective or individual care to solve the main health problems related to health at home
- ♦ Perform a critical reading of the scientific literature on these diseases and at the same time have the tools to communicate research results
- ♦ Collect, process and analyze in very diverse clinical and epidemiological contexts, any scientific information for diagnostic and therapeutic decision-making in the field of home hospitalization specifically and health care in general
- ♦ Develop learning as one of the most important skills for any professional nowadays, who is obliged to constantly train and improve their professional skills due to the dizzying and accelerated process of scientific knowledge production
- ♦ Increase diagnostic and therapeutic capabilities for dealing with complex chronic diseases and the general health care of patients in their homes, through the in-depth study of the epidemiological, clinical, pathophysiological, diagnostic, and therapeutic elements of these diseases
- ♦ Hone skills to manage, advise or lead multidisciplinary teams to care for complex patients in communities or individual patients, as well as scientific research teams
- ♦ Develop skills for self-improvement, in addition to being able to provide training and professional improvement activities due to the high level of scientific and professional preparation acquired with this program
- ♦ Educate the population in the field of complex chronic diseases in order to acquire and develop a culture of prevention based on healthy lifestyles





Specific Skills

- Understand the biological, epidemiological and social determiners which make chronic diseases the most prolific diseases in our society and their impact on the rates of morbidity and mortality
 - Identify and analyze the latest scientific information in home-based care, in order to design plans and programs to control it
 - Apply existing control measures to prevent the flare-up of these diseases and the strain on emergency services
 - Evaluate the epidemiological aspects related to chronic diseases that will permit implementation actions for their control in the community, in real and/or simulated conditions
 - Timely diagnosis, based on clinical manifestations, of the most frequent or new diseases in order to ensure their correct treatment, rehabilitation and control
 - Justify the importance of vaccination as an important public health measure for the control of flare-ups of diseases or the appearance of new diseases relating to those pre-existing ones
 - Identify the occupational, social and environmental risk factors, that favor the development of these diseases in the community
 - Identify the main clinical syndromes susceptible to home-based control and treatment
 - Apply prevention and control measures to reduce morbidity and mortality in chronic diseases
- Master the control of symptoms in diseases with palliative care needs
 - Master knowledge of the correct doctor-patient relationship, bringing humanization into the process
 - Educate the community on the prevention of flare-ups and how to control them
 - Identify the fundamental aspects of the pathogenesis and the main clinical features of the diseases studied
 - Halt the progression of antibiotic resistance, based on reasoned treatment and supported by the best scientific evidence
 - Develop skills for practising diagnostic and therapeutic techniques in the home



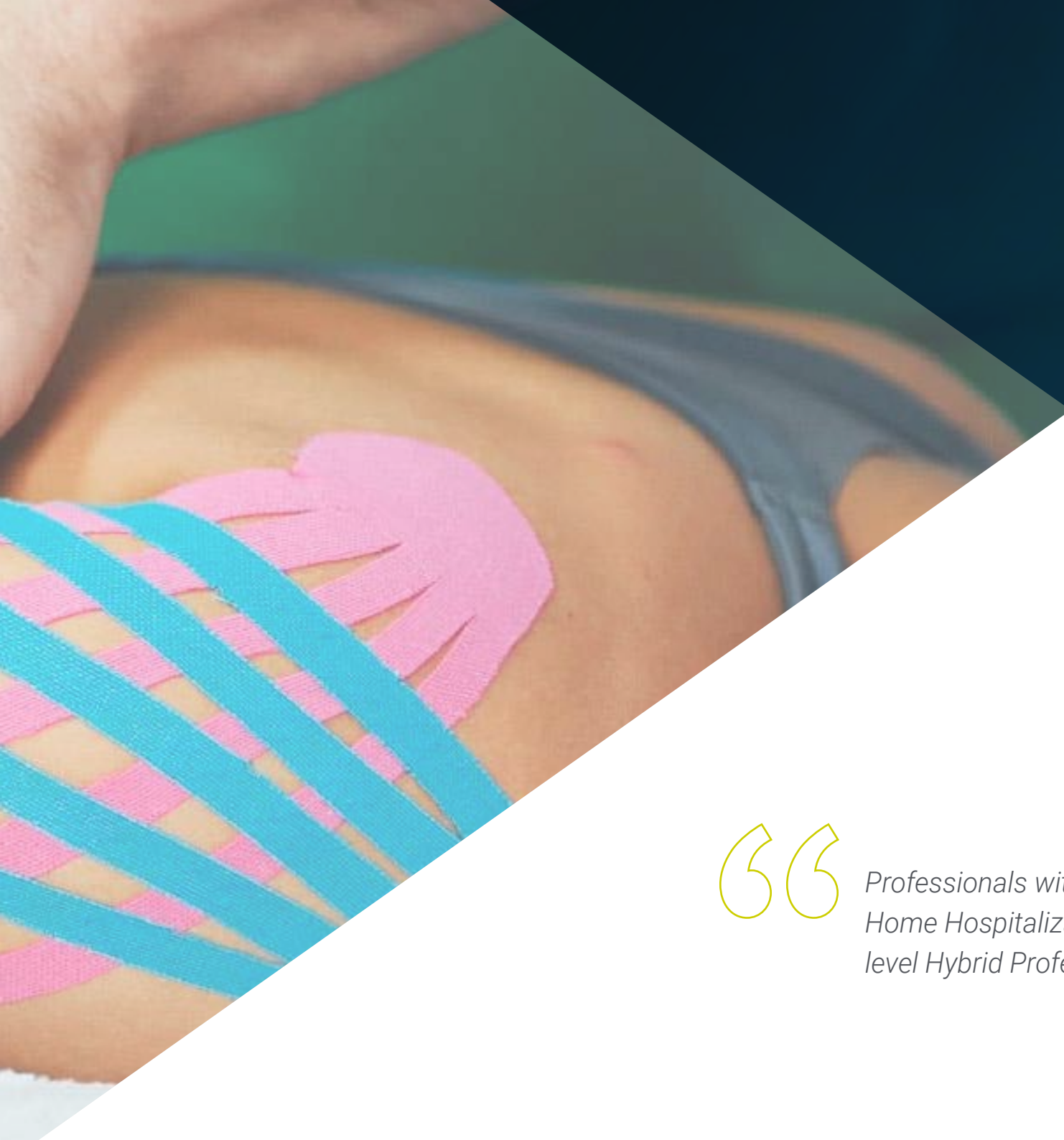
Enhance your assessment and planning skills for home care of patients with this Hybrid Professional Master's Degree in Home Care Hospitalization"

05

Course Management

The teaching team of the Hybrid Professional Master's Degree in Home Hospitalization is composed of a group of highly qualified professionals, with extensive experience in the health field and in the care of patients at home. The teachers are experts in this field with a consolidated trajectory in the sector. In addition, they are highly committed to ensuring that the professional achieves a complete update in just 12 months. For this reason, students will be able to resolve any doubts they may have about the content of this program with specialized teaching staff.

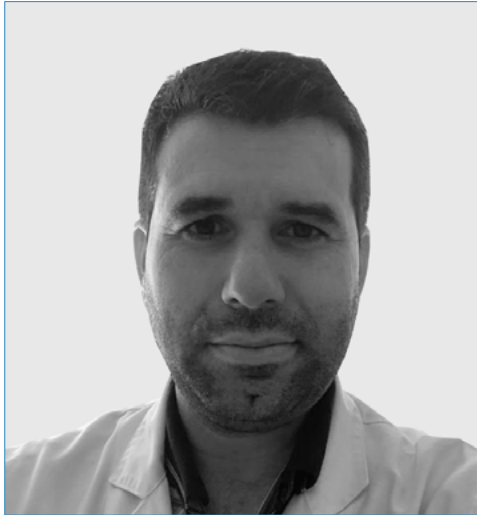




“

Professionals with extensive experience in Home Hospitalization make up this high level Hybrid Professional Master's Degree”

Management



Dr. Lafuente Sanchis, Manuel Pablo

- ♦ Head of the Home Hospitalization and Palliative Care Service at La Ribera University Hospital, Valencia
- ♦ Specialist in Family and Community Medicine at the Virgen de los Lirios Hospital, Alcoy
- ♦ Clinical Simulation Instructor, Catholic University of Murcia
- ♦ University Professor in Nursing Studies
- ♦ Expert in Palliative Care, International University of La Rioja
- ♦ University Expert in University Teaching from the Catholic University of Valencia
- ♦ Degree in Medicine and Surgery from the University of Valencia
- ♦ Member of the Spanish Society of the Society Spanish Society of Clinical Simulation

Professors

Ms. Alcover Pons, Marta

- ♦ Nurse Specialist in Preventive Medicine
- ♦ Nurse of the Preventive Medicine Service of La Ribera University Hospital in Valencia
- ♦ University Diploma in Nursing from the University of Valencia

Ms. Amoros Cantero, Aurora

- ♦ Nurse at the Neurosurgery, Education and Development Foundation (NED)
- ♦ University Diploma in Nursing from the University of Valencia

Dr. Bou Monterde, Ricardo

- ♦ Medical Epidemiologist specialized in Preventive Medicine and Public Health
- ♦ Head of Epidemiology and Preventive Medicine at La Ribera University Hospital, Valencia
- ♦ Epidemiologist at the Department of Health of Catalonia
- ♦ Doctor in Medicine and Surgery from the University of Catalonia
- ♦ Master's Degree in Clinical Trials from the School of Hygiene and Tropical Medicine, University of London

Dr. Ciancotti Oliver, Lucía

- ♦ Associate Physician in the Preventative Medicine Unit at the Ribera University Hospital, Valencia
- ♦ Technician of Health Promotion and Prevention of the stages of life
- ♦ Specialist in Family and Community Medicine at the Lluís Alcanyis Hospital, Valencia
- ♦ Specialist in Preventive Medicine, Public Health and Hygiene university Dr. Peset Hospital, Valencia
- ♦ Degree in Medicine and Surgery from the University of Valencia
- ♦ Master's Degree in Public Health and Healthcare Management, University of Valencia
- ♦ Member of the Spanish Society of Preventive Medicine, Public Health and Hygiene

Dr. Flor Bustos, Loida

- ♦ Specialist in Family and Community Medicine
- ♦ Assistant Physician of the Family and Community Medicine Area of the Manises Hospital
- ♦ Specialist Physician of the Home Hospitalization and Palliative Care Unit at La Ribera University Hospital, Valencia
- ♦ PhD in Medicine and Surgery from the University of Valencia

Mr. García-Noblejas Julià, Pablo

- ♦ Primary Care Nurse with Expertise in Cardiovascular Risk
- ♦ Nurse of the Home Hospitalization and Palliative Care Unit of La Ribera University Hospital
- ♦ Master's Degree in Hospital Management, Catholic University of Valencia
- ♦ Degree in Nursing from the University of Valencia
- ♦ Member of the Valencian Primary Care Nursing Society

Dr. Jara Calabuig, Irina

- ♦ Alzira Health Care Physician at La Bassa Health Center
- ♦ Physician at La Fàbrica Health Center
- ♦ Physician at the Muro d' Alcoi Health Center Auxiliary Clinics
- ♦ Physician at the Banyeres de Mariola Health Center
- ♦ Teaching collaborator in continuous care at La Fàbrica Health Center (Alcoy), Cocentaina and Carlet
- ♦ Specialist in Family and Community Medicine at the Virgen de Los Lirios Hospital
- ♦ Degree in Medicine and Surgery from the University of Reus Spain
- ♦ Master's Degree in Palliative Care from the University of Valladolid
- ♦ SEMERGEN

Dr. Martín Marco, Antonio

- ♦ Internal Medicine Specialist at Arnau de Vilanova Hospital, Valencia
- ♦ Attending Physician in the Home Hospitalization and Palliative Care Unit
- ♦ Head of Teaching and Research in the Palliative Care in Unit
- ♦ Master's Degree in Emergency Medical Care
- ♦ Master's Degree in Emergency Medicine and Surgery
- ♦ Degree in Medicine and Surgery from the University of Zaragoza
- ♦ Member of the Spanish Society of Medical Oncology, Spanish Society of Internal Medicine

Ms. Marqués Aguilar, Elvira

- ♦ Nursing Supervisor, Home Hospitalization and Palliative Care Unit
- ♦ University Diploma in Nursing at the University of Valencia
- ♦ Master's Degree in School Health
- ♦ Case manager for complex chronic patients, Valencia School of Health Studies

Dr. Santander López, Jorge

- ♦ Specialist in Home Hospitalization and Palliative Care
- ♦ Assistant Physician of the Home Hospitalization and Palliative Care Unit at La Fe Hospital, Valencia, Spain
- ♦ Degree in Medicine and Surgery from the University of Mendoza, Argentina
- ♦ Specialist in Family and Community Medicine at La Fe University Hospital of Valencia

Ms. Sanchís Aguilar, Paula

- ♦ Nurse in the Home Hospitalization and Palliative Care Unit at La Ribera University Hospital, Valencia
- ♦ Case Manager of Complex Chronic Patients at the Valencian School of Health Studies (EVES)
- ♦ University Diploma in Nursing

Dr. Tarraso Gómez, María Luisa

- ♦ Specialist in Family and Community Medicine
- ♦ Associate Physician, Home Hospitalization and Palliative Care Unit, Hospital Universitario de La Ribera, Valencia
- ♦ Associate Physician of the Pain Unit at the Hospital Universitario de La Ribera, Valencia
- ♦ Master's Degree in Palliative Care from the University of Valladolid
- ♦ Member of the Spanish Society of Palliative Care





Dr. Torrijos Pastor, Antonio

- ◆ Attending Physician of Home Hospitalization and Palliative Care Unit
- ◆ Specialist in Family and Community Medicine at the Marina Baixa Hospital, Alicante
- ◆ Degree in Medicine and Surgery from the University of Cadiz
- ◆ University Master's Degree in Palliative Care from the University of Valladolid

Ms. Vila Herranz, Mireia

- ◆ Nurse in the Home Hospitalization and Palliative Care Unit
- ◆ Professor of Palliative Care at the Valencian School of Health Studies (EVES)
- ◆ University Diploma in Nursing at the Catholic University of Valencia
- ◆ Training in Terminal Illness and Palliative Care for Nursing

“*Consolidated specialists in the healthcare field are in charge of providing you with the most effective strategies to care for patients at home*”

06

Educational Plan

The Hybrid Professional Master's Degree in Home Hospitalization offers a comprehensive and high quality program that combines both theory and practice in a balanced way. Physiotherapists will have access to the best specialists in the field of Respiratory Physiotherapy, allowing them to improve their advanced skills and learn innovative treatment techniques. In addition, the internship in a recognized clinical center will provide them with an unbeatable experience to apply the concepts addressed in a real environment and under supervision. In addition, this program features innovative multimedia content and is available 24 hours a day, allowing access from any digital device with an internet connection.





“

*You have a Virtual Library, accessible
24 hours a day, from any digital
device with internet connection”*

Module 1. Organization of Home Hospitalization

- 1.1. Introduction and Justification
 - 1.1.1. Introduction
 - 1.1.2. Justification
- 1.2. History of Home Hospitalization
 - 1.2.1. Historical Recap
 - 1.2.2. Reference Units
 - 1.2.3. The Present and Future of Home Hospitalization
- 1.3. Organizational Models
 - 1.3.1. Hospital-Based Home Care
 - 1.3.2. Care Based on Primary Care
 - 1.3.3. Support Service at Home
- 1.4. Differences Between HH and Home Care from Primary Care and Other Models of Home Care (HDOM)
 - 1.4.1. HH
 - 1.4.2. Home Care Models
- 1.5. Evidence-Based Medicine
 - 1.5.1. Advantages and Disadvantages of the HaD Model in Relation to Conventional Hospitalization
- 1.6. Portfolio of services
 - 1.6.1. Early Discharge Scheme
 - 1.6.2. High-Tech Scheme
 - 1.6.3. Support Function Scheme
- 1.7. General Criteria for Inclusion and Exclusion
 - 1.7.1. Willfulness
 - 1.7.2. Social criteria
 - 1.7.3. Geographical Criteria
 - 1.7.4. Medical Criteria

- 1.8. Integration with Different Care Levels
 - 1.8.1. Primary Care
 - 1.8.2. Emergencies
 - 1.8.3. Conventional Hospitalization
 - 1.8.4. Social-Health Centers
 - 1.8.5. Residences
- 1.9. Structure and Resources of HH
 - 1.9.1. Structure of HH
 - 1.9.2. Resources in HH

Module 2. General Aspects. Research and Teaching

- 2.1. Process Management
 - 2.1.1. Pre-Admission Assessment
 - 2.1.2. Admission
 - 2.1.3. Discharge and Transfer to Primary Care
 - 2.1.4. Re-admission
 - 2.1.5. Case Management
- 2.2. Electronic Medical History, Peculiarities of HH (mobility and accessibility)
 - 2.2.1. Telemedicine
- 2.3. Quality Indicators
 - 2.3.1. Management Indicators
 - 2.3.2. Clinical Indicators
- 2.4. Research in HH
 - 2.4.1. Future and Present Lines of Work in the HaD
- 2.5. Undergraduate and Postgraduate Teaching
 - 2.5.1. Undergraduate Teaching
 - 2.5.2. Postgraduate Teaching
- 2.6. Future Perspectives
 - 2.6.1. Future Challenges
- 2.7. Telemedicine
 - 2.7.1. Concept and Considerations

- 2.8. Case Management
 - 2.8.1. Nursing Management of Hospital Cases
 - 2.8.2. Nursing Management of Community Cases
 - 2.8.3. Management of Medicine-Based Cases

Module 3. Care for Different Specific Types of Patients

- 3.1. Fragile Geriatric Patient
 - 3.1.1. Peculiarities in a Geriatric Patient
 - 3.1.2. Relationship Model with Assisted Care Residences
 - 3.1.3. Treatment of Geriatric Patients
- 3.2. Complex Chronic Patient
 - 3.2.1. Definition
 - 3.2.2. Management Models for Complex Chronic Patients
 - 3.2.3. Terminal Criteria
- 3.3. Palliative Patient
 - 3.3.1. Differences Between an Oncologic or Non-Oncologic Palliative Patient
 - 3.3.2. Terminal Criteria
 - 3.3.3. Management Models for Palliative Patients
- 3.4. Polyfrequency Patients
 - 3.4.1. Case Management
- 3.5. Home-Based Antibiotic Therapy
 - 3.5.1. General Aspects
 - 3.5.2. Home Intravenous Antibiotic Therapy
- 3.6. Psychiatric Patient
 - 3.6.1. Peculiarities of Home-Based Mental Health Monitoring
- 3.7. Pediatric Patient
 - 3.7.1. Considerations in a Pediatric Patient

Module 4. Management of Subsidiary Syndromes at Home

- 4.1. Heart Failure
 - 4.1.1. Criteria for Admission and Exclusion
 - 4.1.2. Management of Treatment and Symptoms in the Home
 - 4.1.3. Criteria for Discharge
- 4.2. COPD
 - 4.2.1. Criteria for Admission and Exclusion
 - 4.2.2. Management of Treatment and Symptoms in the Home
- 4.3. Caring for a Patient Post-Surgery
 - 4.3.1. Criteria for Admission and Exclusion
 - 4.3.2. Management of the Main Symptom and Complications in Patients Post-Surgery
- 4.4. Neurological Patient
 - 4.4.1. Dementia
 - 4.4.2. Multiple Sclerosis
 - 4.4.3. ALS
- 4.5. DVT and PE
 - 4.5.1. Home-Based Diagnosis
 - 4.5.2. Treatment Adjusted to the Home
 - 4.5.3. Admission Criteria in Conventional Hospitalization
- 4.6. Home-Based Rehabilitation Loss of Functionality Fractures
 - 4.6.1. Scales of Functionality
 - 4.6.2. Possibilities for Home-Based Rehabilitation
- 4.7. Nephrourological Syndromes
 - 4.7.1. Pyelonephritis
 - 4.7.2. Urinary Tract Infections
 - 4.7.3. Prostate Disease
 - 4.7.4. Acute and Chronic Kidney Disease
- 4.8. Patient with Digestive Diseases
 - 4.8.1. Cirrhosis
 - 4.8.2. Hepatic Encephalopathy
 - 4.8.3. Small Intestine

Module 5. Management of Infections at Home Criteria for Admission and Exclusion, Management, Discharge Criteria

- 5.1. Pneumonia
 - 5.1.1. Diagnosis
 - 5.1.2. Home-Based Management
 - 5.1.3. Bronchoaspirations Prevention and Management
- 5.2. Infections of the Urinary Tract
 - 5.2.1. Pyelonephritis
 - 5.2.2. Urinary Tract Infections
 - 5.2.3. Prostatitis
- 5.3. Intra-Abdominal Infections
 - 5.3.1. Liver Abscesses
 - 5.3.2. Post-Surgery Abscesses
 - 5.3.3. Cholecystitis and Cholangitis
 - 5.3.4. Diverticulitis
 - 5.3.5. Infectious Pancreatitis
- 5.4. Abscesses
 - 5.4.1. General Aspects
 - 5.4.2. Treatment
 - 5.4.3. Types of Cure
- 5.5. Soft Tissue Infections
 - 5.5.1. Concept
 - 5.5.2. Classification
- 5.6. Infection of Surgical Wounds
 - 5.6.1. Concept
 - 5.6.2. Classification
- 5.7. Osteomyelitis
 - 5.7.1. Concept
 - 5.7.2. Classification
- 5.8. Endocarditis
 - 5.8.1. Concept
 - 5.8.2. Classification

- 5.9. Prosthesis and Intra-Vascular Device Infections
 - 5.9.1. Concept
 - 5.9.2. Classification
- 5.10. Febrile Neutropenia
 - 5.10.1. Diagnosis
 - 5.10.2. Treatment

Module 6. Palliative Care in Oncological Patients

- 6.1. Comprehensive Assessment in Palliative Care
 - 6.1.1. Medical History Model in Palliative Care
 - 6.1.2. Anamnesis in Palliative Care
 - 6.1.3. The Importance of Family and Social Circumstances in a Comprehensive Assessment
- 6.2. Assessment Scales in Palliative Care
 - 6.2.1. ECOG
 - 6.2.2. Barthel
 - 6.2.3. Karnofsky
 - 6.2.4. VAS
 - 6.2.5. Edmonton Symptom Assessment Scale
 - 6.2.6. Gijón Scale
 - 6.2.7. Family Apgar
 - 6.2.8. Pfeiffer
 - 6.2.9. Nutritional Assessment
- 6.3. Continuous Care Models in Palliative Oncology Patients
 - 6.3.1. Palliative Patients
 - 6.3.2. Models
- 6.4. Pain Management in Palliative Care
 - 6.4.1. Analgesic Ladder
 - 6.4.2. First Step
 - 6.4.3. Second Step
 - 6.4.4. Third Step
 - 6.4.5. Coadjuvants

- 6.5. Control of Dyspnea
 - 6.5.1. Diagnosis
 - 6.5.2. Etiology
 - 6.5.3. Home-Based Management
- 6.6. Delirium Control
 - 6.6.1. Diagnosis
 - 6.6.2. Etiology
 - 6.6.3. Home-Based Management
- 6.7. Nausea and Vomiting Control
 - 6.7.1. Diagnosis
 - 6.7.2. Etiology
 - 6.7.3. Home-Based Management
- 6.8. Alterations in Intestinal Rhythm Diarrhea and Constipation
 - 6.8.1. Diagnosis
 - 6.8.2. Etiology
 - 6.8.3. Home-Based Management
- 6.9. Anorexia-Cachexia
 - 6.9.1. Diagnosis
 - 6.9.2. Etiology
 - 6.9.3. Home-Based Management
- 6.10. Anxiety-Insomnia
 - 6.10.1. Diagnosis
 - 6.10.2. Etiology
 - 6.10.3. Home-Based Management
- 6.11. Situation in a Patient's Last Days and Palliative Sedation
 - 6.11.1. Terminal Criteria
 - 6.11.2. Palliative Sedation vs. Passive Euthanasia vs. Active Euthanasia
 - 6.11.3. Home-Based Management
- 6.12. Grief and Family Care
 - 6.12.1. Grief
 - 6.12.2. Family Circle

- 6.13. Spanish and European Legality on Palliative Care
 - 6.13.1. Legal Aspects of Palliative Care in Europe
 - 6.13.2. Legal Aspects of Palliative Care in Spain
- 6.14. Anticipated Wishes
 - 6.14.1. Definition
 - 6.14.2. Most Important Asepcts to Take Into Account

Module 7. Pain Management in Home Hospitalization

- 7.1. Pain Management
 - 7.1.1. General Aspects
 - 7.1.2. Considerations in the Home
- 7.2. Scales and Assessment of Patient in Pain
 - 7.2.1. Classification
 - 7.2.2. Patient Assessment
- 7.3. First-Line Analgesic Treatment
 - 7.3.1. Treatment
 - 7.3.2. Procedures in the Home
- 7.4. 2nd Line Analgesic Treatment
 - 7.4.1. Treatment
 - 7.4.2. Procedures in the Home
- 7.5. Third Step Treatment Opioids
 - 7.5.1. Treatment
 - 7.5.2. Procedures in the Home
- 7.6. Coadjuvants
 - 7.6.1. Classification
 - 7.6.2. Procedures
- 7.7. Interventional Pain Management
 - 7.7.1. Interconsultation
 - 7.7.2. Procedures in the Home
- 7.8. Current Legality in the Management of Opioid Analgesics
 - 7.8.1. Current Spanish Legal Framework

Module 8. Nutrition in Home Hospitalization

- 8.1. Nutritional Assessment Scales
 - 8.1.1. MUST
 - 8.1.2. MNA
 - 8.1.3. Laboratory Parameters
 - 8.1.4. Clinical Parameters
- 8.2. Dysphagia
 - 8.2.1. Diagnosis
 - 8.2.2. Etiology
 - 8.2.3. Home-Based Management
- 8.3. Oncology Patients
 - 8.3.1. Nutritional Needs in Oncology Patients
 - 8.3.2. Peculiarities
- 8.4. Geriatric Patient
 - 8.4.1. Nutritional Needs in Geriatric Patients
 - 8.4.2. Peculiarities
- 8.5. Patient with Infectious Diseases
 - 8.5.1. Nutritional Needs in Infectious Patients
 - 8.5.2. Peculiarities
- 8.6. Enteral Nutrition at Home
 - 8.6.1. Types of Nutrition
 - 8.6.2. Normocaloric- Normoprotein
 - 8.6.3. Hyperproteic-Hypercaloric
 - 8.6.4. Hyperproteic-Normocaloric
 - 8.6.5. Special Supplementation
- 8.7. Parenteral Home Nutrition
 - 8.7.1. Types of Nutrition
 - 8.7.2. Probes

Module 9. Special Treatments

- 9.1. Serotherapy and EV Medication
 - 9.1.1. Peripheral Routes
 - 9.1.2. Central Routes
 - 9.1.3. Drug Combinations
- 9.2. Administration of Blood Products
 - 9.2.1. Red blood Cell Concentrates
 - 9.2.2. Platelet Pool
 - 9.2.3. Plasma
 - 9.2.4. Protocols for Transfusion of Blood Derivatives at Home
- 9.3. Subcutaneous Medication
 - 9.3.1. Elastomeric Infusers
 - 9.3.2. Treatment with the Possibility of Subcutaneous Administration
 - 9.3.3. Drug Combinations
- 9.4. Chemotherapy at Home
 - 9.4.1. Classification
 - 9.4.2. Considerations
- 9.5. Intravenous Treatment on Home Perfusion Pump
 - 9.5.1. Classification
 - 9.5.2. Considerations
- 9.6. Bladder and Digestive Probes
 - 9.6.1. Home Replacement Protocols
 - 9.6.2. Technical Videos
- 9.7. PEG Replacement
 - 9.7.1. Home Replacement Protocols
 - 9.7.2. Technical Videos
- 9.8. Tracheostomy Replacement
 - 9.8.1. Home Replacement Protocols
 - 9.8.2. Technical Videos
- 9.9. Obtaining and Transporting Samples: Analytical, Cultures, etc

Module 10. Pediatric Patient in Home Hospitalization

- 10.1. Introduction
 - 10.1.1. Pediatric Patient Particularities
- 10.2. Specific Pediatric Assessment at Home
 - 10.2.1. Considerations
- 10.3. Pediatric Oncology
- 10.4. Infections in Pediatrics
 - 10.4.1. Classification
 - 10.4.2. Procedures
- 10.5. Congenital Diseases
 - 10.5.1. Classification
 - 10.5.2. Considerations
- 10.6. Legality in Pediatric Patient Care
 - 10.6.1. Spanish Legal Framework
 - 10.6.2. Considerations

Module 11. Preventative Medicine in Home Hospitalization

- 11.1. Preventative Medicine
 - 11.1.1. Concepts and Overviews
- 11.2. Hygiene
 - 11.2.1. Considerations
 - 11.2.2. Procedures in the Home
- 11.3. Colonization in Infection by Multiresistant Germs Home Measurements
 - 11.3.1. Colonization
 - 11.3.2. Multiresistant Germs
 - 11.3.3. Home Measurements
- 11.4. Adequacy of Antibiotic Treatment at Home
 - 11.4.1. Types of Treatment
 - 11.4.2. Therapeutic Suitability
- 11.5. Vaccination in Special Patients
 - 11.5.1. Vaccines
 - 11.5.2. Special Patients

Module 12. Therapeutic Techniques

- 12.1. Paracentesis
 - 12.1.1. Procedure
 - 12.1.2. Home Paracentesis
- 12.2. Thoracentesis
 - 12.2.1. Procedure
 - 12.2.2. Home Thoracentesis
- 12.3. Arthrocentesis
 - 12.3.1. Procedure
 - 12.3.2. Home Arthrocentesis
- 12.4. Oxygen Therapy
 - 12.4.1. Procedure
 - 12.4.2. Home Oxygen Therapy
- 12.5. Aerosol Therapy
 - 12.5.1. Procedure
 - 12.5.2. Home Aerosol Therapy
- 12.6. Mechanical Ventilation
 - 12.6.1. Procedure
 - 12.6.2. Home Mechanical Ventilation

Module 13. Diagnostic Techniques

- 13.1. ECG
 - 13.1.1. Procedure
 - 13.1.2. ECG at Home
- 13.2. Ultrasound
 - 13.2.1. Procedure
 - 13.2.2. Ultrasound at Home
- 13.3. Pusoiximetry
 - 13.3.1. Procedure
 - 13.3.2. Pusoiximetry at Home
- 13.4. Analysis
 - 13.4.1. Procedure
 - 13.4.2. Blood Analysis at Home
- 13.5. Cultures
 - 13.5.1. Procedure
 - 13.5.2. Blood Analysis at Home
- 13.6. Scales (Functional, Cognitive, Nutritional Assessment, etc.)
 - 13.6.1. Procedure
 - 13.6.2. Classification





“

A university qualification that will lead you to delve into new ways of applying Physiotherapy in the home environment to improve the quality of life of patients”

07

Clinical Internship

Upon completion of the theoretical phase of this program, the graduate will move on to an internship in a clinical center selected by TECH. During this practical experience, students will have the opportunity to be involved in the use of the most advanced therapeutic techniques and resources necessary for the care of people in their homes.



“

Improve the quality of life of patients from the comfort of their home thanks to the methodology that will show you real experts in this field”

The Hybrid Professional Master's Degree in Home Hospitalization offers the opportunity to do an internship in a first level health center, working from Monday to Friday with specialists in practical training for 8 consecutive hours. This program offers an experience in which professionals can deal with real patients and learn from a team of leading specialists in the field of Home Hospitalization. They will also be able to use the most innovative diagnostic procedures and state-of-the-art therapies for each pathology.

This educational proposal is completely practical and focuses on the development and improvement of the necessary skills to provide health care in areas and situations that require a high level of qualification. The program is oriented to the specific training for the professional practice in a safe environment for the patient and with a high performance by the professional.

In the field of Home Hospitalization, the development of Physiotherapy requires constant updating of both techniques and communication skills with the patient. To respond to this need, TECH has created a proposal that will allow the graduates to carry out a practical process in a specialized and avant-garde clinical center, increasing their competences in this field. In this way, the center becomes an optimal environment to improve the skills and abilities needed both in the present and in the future of the graduates in their work as physiotherapists.

The practical phase will be carried out with the active participation of the student performing the activities and procedures of each area of competence (learning to learn and learning to do), with the accompaniment and guidance of teachers and other fellow trainees that facilitate teamwork and multidisciplinary integration as transversal competencies for from the physiotherapy (learning to be and learning to relate).



Work with real patients and improve your skills with a team of leading professionals in this area”



The procedures described below will form the basis of the practical part of the internship, and their implementation is subject to both the suitability of the patients and the availability of the center and its workload, with the proposed activities being as follows:

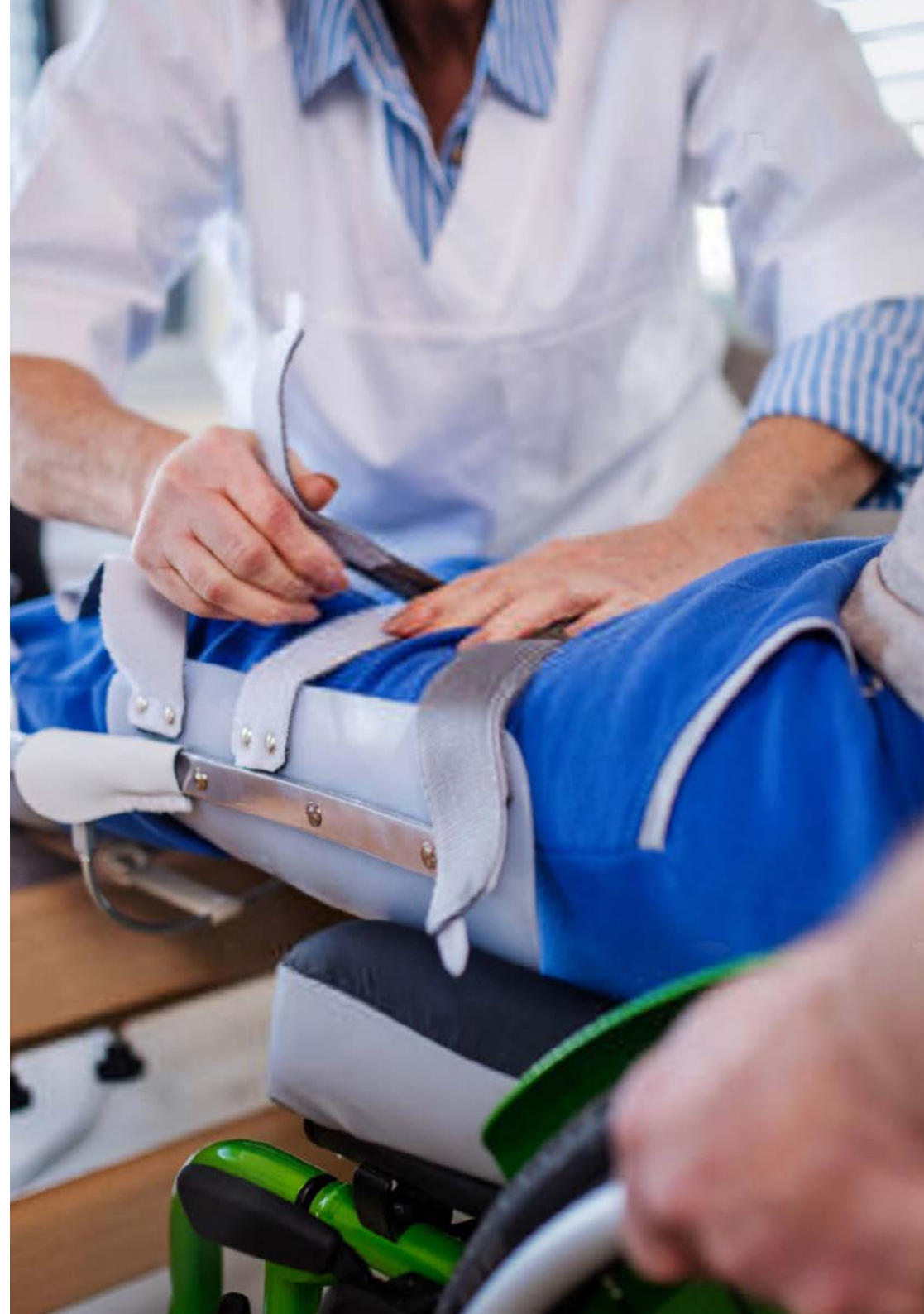
Module	Practical Activity
Pain Management in Home Hospitalization	Evaluate the pain intensity of the patient
	Apply physical therapy techniques for pain relief
	Perform relaxation and breathing exercises
	Provide information and education on pain management to the patient and their family
Treatment Techniques in Home Hospitalization	Perform patient-specific therapeutic exercises
	Apply mobilization and stretching techniques
	Use respiratory support equipment and devices
	Teach the patient and family self-help techniques
Diagnoses Techniques in Home Hospitalization	Perform clinical assessments of the patient
	Use diagnostic devices to measure lung capacity
	Perform stress tests
	Monitor patient response to treatment
Management of Infections at Home	Identify admission and exclusion criteria for home treatment
	Provide information and education on infection prevention measures
	Conduct periodic assessments of the patient's health status
	Establish discharge criteria
Care to the different specific types of patients in home hospitalization	Perform physiotherapy exercises and techniques appropriate to the age and condition of the patient
	Apply disease prevention and control measures in immunocompromised patients
	Care for patients with chronic respiratory diseases
	Provide emotional and psychological support to critically ill patients

Civil Liability Insurance

This institution's main concern is to guarantee the safety of the trainees and other collaborating agents involved in the internship process at the company. Among the measures dedicated to achieve this is the response to any incident that may occur during the entire teaching-learning process.

To this end, this entity commits to purchasing a civil liability insurance policy to cover any eventuality that may arise during the course of the internship at the center.

This liability policy for interns will have broad coverage and will be taken out prior to the start of the Internship Program period. That way professionals will not have to worry in case of having to face an unexpected situation and will be covered until the end of the internship program at the center.



General Conditions of the Internship Program

The general terms and conditions of the internship agreement for the program are as follows:

1. TUTOR: During the Hybrid Professional Master's Degree, students will be assigned with two tutors who will accompany them throughout the process, answering any doubts and questions that may arise. On the one hand, there will be a professional tutor belonging to the internship center who will have the purpose of guiding and supporting the student at all times. On the other hand, they will also be assigned with an academic tutor whose mission will be to coordinate and help the students during the whole process, solving doubts and facilitating everything they may need. In this way, the student will be accompanied and will be able to discuss any doubts that may arise, both clinical and academic.

2. DURATION: The internship program will have a duration of three continuous weeks, in 8-hour days, 5 days a week. The days of attendance and the schedule will be the responsibility of the center and the professional will be informed well in advance so that they can make the appropriate arrangements.

3. ABSENCE: If the students does not show up on the start date of the Hybrid Professional Master's Degree, they will lose the right to it, without the possibility of reimbursement or change of dates. Absence for more than two days from the internship, without justification or a medical reason, will result in the professional's withdrawal from the internship, therefore, automatic termination of the internship. Any problems that may arise during the course of the internship must be urgently reported to the academic tutor.

4. CERTIFICATION: Professionals who pass the Hybrid Professional Master's Degree will receive a certificate accrediting their stay at the center.

5. EMPLOYMENT RELATIONSHIP: The Hybrid Professional Master's Degree shall not constitute an employment relationship of any kind.

6. PRIOR EDUCATION: Some centers may require a certificate of prior education for the Hybrid Professional Master's Degree. In these cases, it will be necessary to submit it to the TECH internship department so that the assignment of the chosen center can be confirmed.

7. DOES NOT INCLUDE: The Hybrid Professional Master's Degree will not include any element not described in the present conditions. Therefore, it does not include accommodation, transportation to the city where the internship takes place, visas or any other items not listed.

However, students may consult with their academic tutor for any questions or recommendations in this regard. The academic tutor will provide the student with all the necessary information to facilitate the procedures in any case.

08

Where Can I Do the Clinical Internship?

TECH has carried out an exhaustive selection of clinical centers to ensure that professionals have access to the best experts in Physiotherapy and can advance in their updating process surrounded by an ideal environment. In this way, the program offers an unique opportunity to acquire advanced practical and theoretical skills in the techniques and methodologies used in the care of patients in their homes, at the hands of real experts in the field.





“

*Access a safe environment for the patient
and improve your professional performance
in the area of Home Hospitalization”*



The student will be able to complete the practical part of this Hybrid Professional Master's Degree at the following centers:



Physiotherapy

Hospital HM Modelo

Country	City
Spain	La Coruña

Address: Rúa Virrey Osorio, 30, 15011, A Coruña

Network of private clinics, hospitals and specialized centers distributed throughout Spain.

Related internship programs:

- Anaesthesiology and Resuscitation
- Palliative Care



Physiotherapy

Hospital Maternidad HM Belén

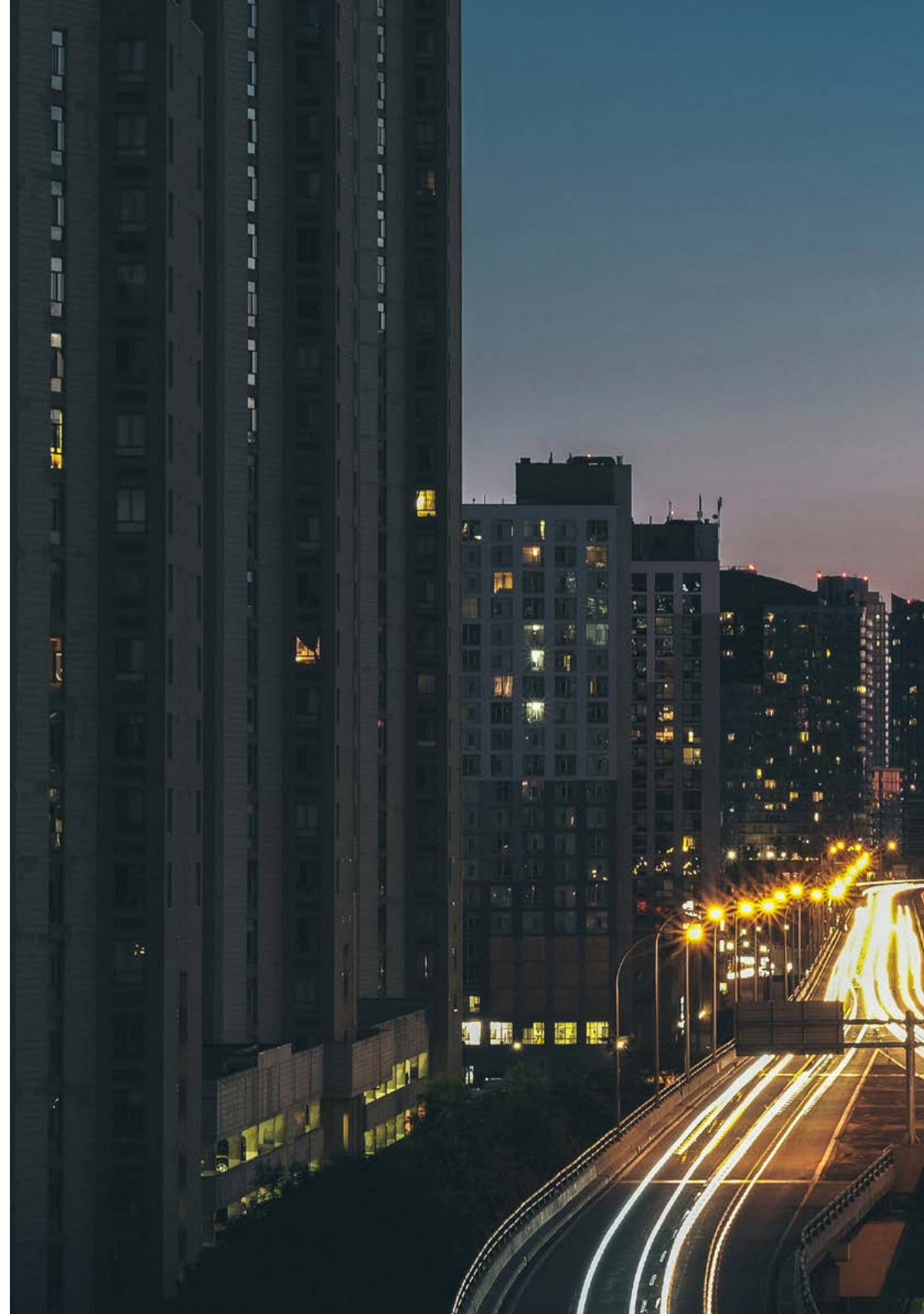
Country	City
Spain	La Coruña

Address: R. Filantropía, 3, 15011, A Coruña

Network of private clinics, hospitals and specialized centers distributed throughout Spain.

Related internship programs:

- Update in Assisted Reproduction
- Hospitals and Health Services Management





Hospital HM Torrelodones

Country: Spain City: Madrid

Address: Av. Castillo Olivares, s/n, 28250, Torrelodones, Madrid

Network of private clinics, hospitals and specialized centers distributed throughout Spain.

Related internship programs:

- Anaesthesiology and Resuscitation
- Palliative Care



Make the most of this opportunity to surround yourself with expert professionals and learn from their work methodology"

09

Methodology

This academic program offers students a different way of learning. Our methodology uses a cyclical learning approach: **Relearning**.

This teaching system is used, for example, in the most prestigious medical schools in the world, and major publications such as the **New England Journal of Medicine** have considered it to be one of the most effective.





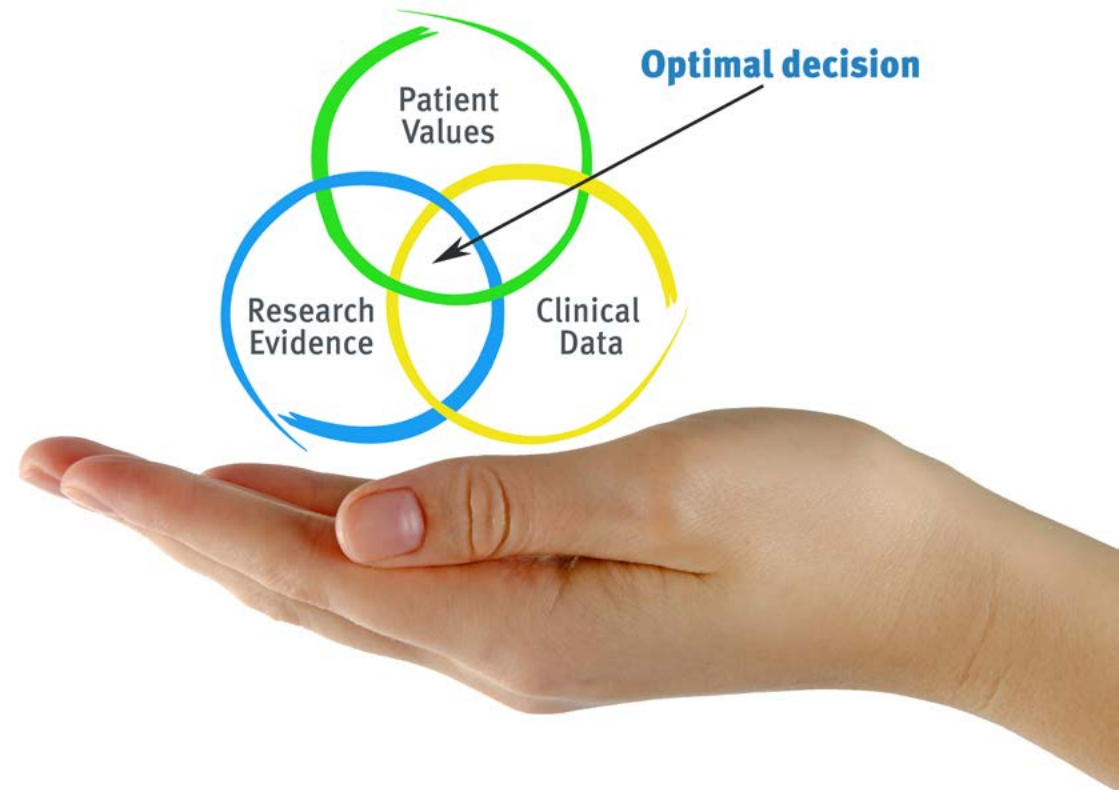
“

Discover Relearning, a system that abandons conventional linear learning, to take you through cyclical teaching systems: a way of learning that has proven to be extremely effective, especially in subjects that require memorization"

At TECH we use the Case Method

What should a professional do in a given situation? Throughout the program, students will face multiple simulated clinical cases, based on real patients, in which they will have to do research, establish hypotheses, and ultimately resolve the situation. There is an abundance of scientific evidence on the effectiveness of the method. Physiotherapists/kinesiologists learn better, faster, and more sustainably over time.

With TECH you will experience a way of learning that is shaking the foundations of traditional universities around the world.



According to Dr. Gérvas, the clinical case is the annotated presentation of a patient, or group of patients, which becomes a "case", an example or model that illustrates some peculiar clinical component, either because of its teaching power or because of its uniqueness or rarity. It is essential that the case is based on current professional life, trying to recreate the real conditions of professional physiotherapy practice.

“

Did you know that this method was developed in 1912, at Harvard, for law students? The case method consisted of presenting students with real-life, complex situations for them to make decisions and justify their decisions on how to solve them. In 1924, Harvard adopted it as a standard teaching method”

The effectiveness of the method is justified by four fundamental achievements:

1. Physiotherapists/kinesiologists who follow this method not only grasp concepts, but also develop their mental capacity, by evaluating real situations and applying their knowledge.
2. The learning process has a clear focus on practical skills that allow the physiotherapist/kinesiologist to better integrate into the real world.
3. Ideas and concepts are understood more efficiently, given that the example situations are based on real-life.
4. Students like to feel that the effort they put into their studies is worthwhile. This then translates into a greater interest in learning and more time dedicated to working on the course.



Relearning Methodology

At TECH we enhance the case method with the best 100% online teaching methodology available: Relearning.

This university is the first in the world to combine the study of clinical cases with a 100% online learning system based on repetition, combining a minimum of 8 different elements in each lesson, a real revolution with respect to the mere study and analysis of cases.



The physiotherapist/kinesiologist will learn through real cases and by solving complex situations in simulated learning environments. These simulations are developed using state-of-the-art software to facilitate immersive learning.

At the forefront of world teaching, the Relearning method has managed to improve the overall satisfaction levels of professionals who complete their studies, with respect to the quality indicators of the best online university (Columbia University).

With this methodology we trained more than 65,000 physiotherapists/kinesiologists with unprecedented success in all clinical specialties, regardless of the workload. Our pedagogical methodology is developed in a highly competitive environment, with a university student body with a strong socioeconomic profile and an average age of 43.5 years old.

Relearning will allow you to learn with less effort and better performance, involving you more in your training, developing a critical mindset, defending arguments, and contrasting opinions: a direct equation for success.

In our program, learning is not a linear process, but rather a spiral (learn, unlearn, forget, and re-learn). Therefore, we combine each of these elements concentrically.

The overall score obtained by our learning system is 8.01, according to the highest international standards.



This program offers the best educational material, prepared with professionals in mind:



Study Material

All teaching material is produced by the specialists who teach the course, specifically for the course, so that the teaching content is really specific and precise.

These contents are then applied to the audiovisual format, to create the TECH online working method. All this, with the latest techniques that offer high quality pieces in each and every one of the materials that are made available to the student.



Physiotherapy Techniques and Procedures on Video

TECH brings students closer to the latest techniques, the latest educational advances and to the forefront of current Physiotherapy techniques and procedures. All of this in direct contact with students and explained in detail so as to aid their assimilation and understanding. And best of all, you can watch them as many times as you want.



Interactive Summaries

The TECH team presents the contents attractively and dynamically in multimedia lessons that include audio, videos, images, diagrams, and concept maps in order to reinforce knowledge.

This unique multimedia content presentation training system was awarded by Microsoft as a "European Success Story".



Additional Reading

Recent articles, consensus documents and international guidelines, among others. In TECH's virtual library, students will have access to everything they need to complete their course.





Expert-Led Case Studies and Case Analysis

Effective learning ought to be contextual. Therefore, TECH presents real cases in which the expert will guide students, focusing on and solving the different situations: a clear and direct way to achieve the highest degree of understanding.



Testing & Retesting

We periodically evaluate and re-evaluate students' knowledge throughout the program, through assessment and self-assessment activities and exercises, so that they can see how they are achieving their goals.



Classes

There is scientific evidence on the usefulness of learning by observing experts. The system known as Learning from an Expert strengthens knowledge and memory, and generates confidence in future difficult decisions.



Quick Action Guides

TECH offers the most relevant contents of the course in the form of worksheets or quick action guides. A synthetic, practical, and effective way to help students progress in their learning.



10 Certificate

This Hybrid Professional Master's Degree in Home Hospitalization guarantees students, in addition to the most rigorous and up-to-date education, access to a Hybrid Professional Master's Degree diploma issued by TECH Technological University.



“

Successfully complete this program and receive your university qualification without having to travel or fill out laborious paperwork"

This **Hybrid Professional Master's Degree in Home Hospitalization** contains the most complete and up-to-date program on the professional and educational field.

After the student has passed the assessments, they will receive their corresponding Hybrid Professional Master's Degree diploma issued by TECH Technological University via tracked delivery*.

In addition to the diploma, students will be able to obtain an academic transcript, as well as a certificate outlining the contents of the program. In order to do so, students should contact their academic advisor, who will provide them with all the necessary information.

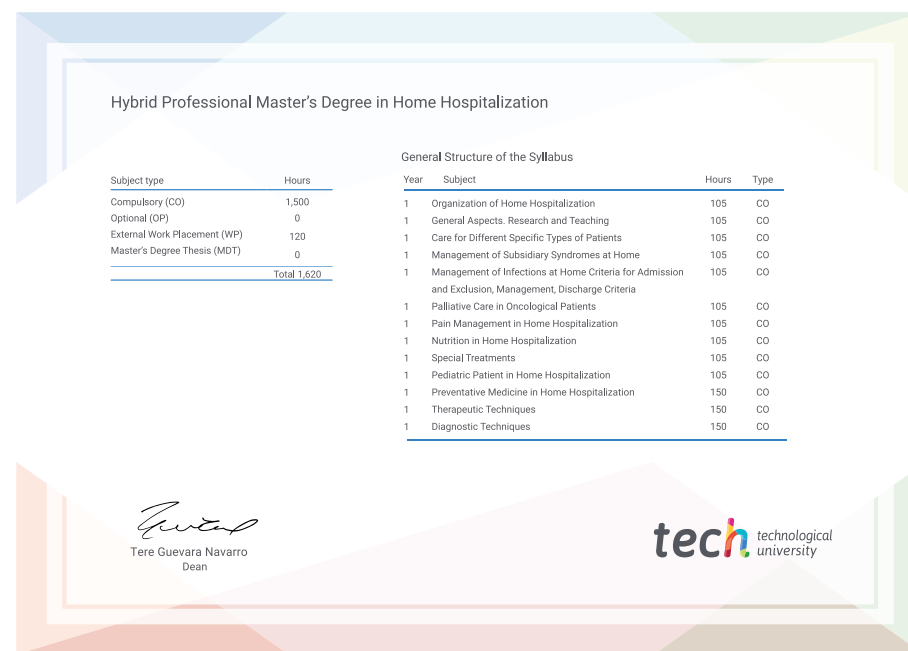
Title: **Hybrid Professional Master's Degree in Home Hospitalization**

Course Modality: **Hybrid (Online + Clinical Internship)**

Duration: **12 months**

Certificate: **TECH Technological University**

Teaching Hours: **1,620 h.**



*Apostille Convention. In the event that the student wishes to have their paper diploma issued with an apostille, TECH EDUCATION will make the necessary arrangements to obtain it, at an additional cost.

future
health confidence people
education information tutors
guarantee accreditation teaching
institutions technology learning
community commitment
personalized service innovation
knowledge presentation
development languages
virtual classroom



Hybrid Professional Master's Degree

Home Hospitalization

Modality: Hybrid (Online + Clinical Internship)

Duration: 12 months

Certificate: TECH Technological University

Teaching Hours: 1,620 h.

Hybrid Professional Master's Degree

Home Hospitalization