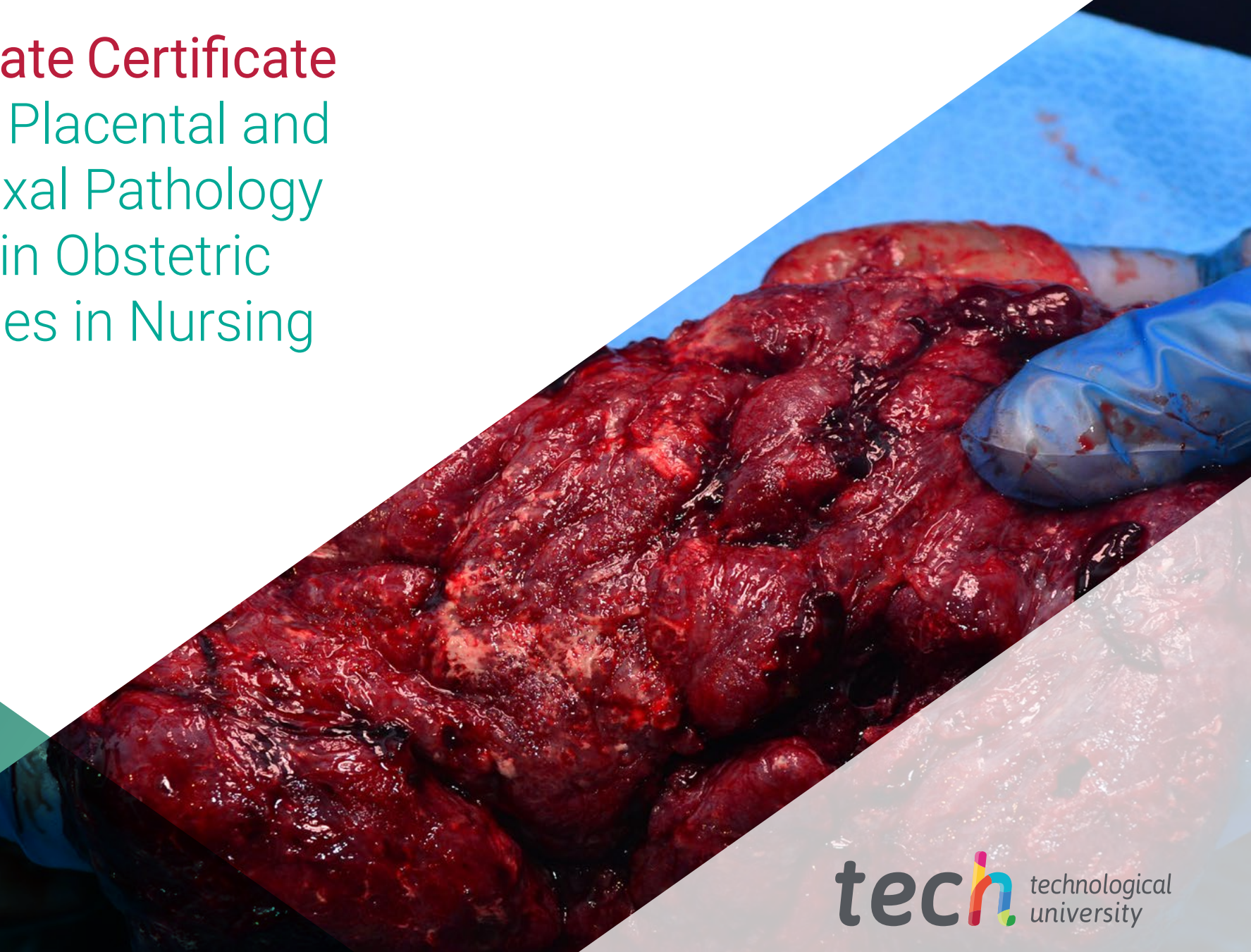


# Postgraduate Certificate

## Update on Placental and Fetal Adnexal Pathology and its Main Obstetric Emergencies in Nursing





## Postgraduate Certificate Update on Placental and Fetal Adnexal Pathology and its Main Obstetric Emergencies in Nursing

- » Modality: online
- » Duration: 6 weeks
- » Certificate: TECH Technological University
- » Dedication: 16h/week
- » Schedule: at your own pace
- » Exams: online

Website: [www.techtute.com/us/nursing/postgraduate-certificate/update-placental-fetal-adnexal-pathology-main-obstetric-emergencies-nursing](http://www.techtute.com/us/nursing/postgraduate-certificate/update-placental-fetal-adnexal-pathology-main-obstetric-emergencies-nursing)

# Index

01

Introduction

---

*p. 4*

02

Objectives

---

*p. 8*

03

Course Management

---

*p. 12*

04

Structure and Content

---

*p. 16*

05

Methodology

---

*p. 20*

06

Certificate

---

*p. 28*



# 01

# Introduction

Improvements in ultrasound devices, in fetal heart rate monitoring or in laboratory techniques for analytical studies have made it possible to perfect the approach to the main obstetric emergencies. However, in situations of special risk for both the pregnant patient and the fetus, it is necessary for midwives to be aware of the most recent studies in this field and the methodologies used in each clinical case. In this context, TECH has created this program that provides a complete overview of placental pathologies and fetal appendages, as well as the indispensable role of health professionals in the main difficulties in childbirth. All in a 100% online format, taught by experts with extensive professional experience in leading hospitals.





“

*Get in just 6 weeks the actualization you are looking for in placental pathologies and the main obstetric emergencies”*

There are numerous scientific studies that have made it possible to understand the main placental pathologies, and although there are still countless unknowns about the exact cause of many conditions such as polyhydramnios, technological advances and techniques for their approach have made it possible to increase the survival of the fetus.

This is perhaps one of the many cases that midwives have to deal with on a daily basis. Continuous procedural and management advances in situations of real risk have led to perfecting the methodologies used for placental insufficiency or anomalies in the umbilical cord. Based on these advances, TECH has created the Postgraduate Certificate in Update on Placental and Fetal Adnexal Pathology and its Main Obstetric Emergencies in Nursing.

An intensive and advanced program, developed by an excellent faculty of midwives with extensive clinical and teaching experience. Thus, through a syllabus prepared by real experts, students will be aware of the latest scientific evidence that justifies the action to be taken in the case of cord prolapse, placental insertion anomalies or postnatal care after shoulder dystocia. In addition, the graduate will have access to video summaries, In Focus videos, specialized readings and simulations of clinical cases that will provide a theoretical-practical vision of the various placental pathologies and the role played by the health professional in these situations.

This way, this academic institution provides an unparalleled update designed for professionals who wish to combine their daily activities with a quality Postgraduate Certificate. And the fact is that, without attendance or classes with fixed schedules, students are faced with an ideal option to be able to self-manage their study time and their most demanding responsibilities.

This **Postgraduate Certificate in Update on Placental and Fetal Adnexal Pathology and its Main Obstetric Emergencies in Nursing** contains the most complete and up-to-date scientific program on the market. The most important features include:

- ♦ The development of practical cases presented by experts in Obstetrics
- ♦ The graphic, schematic, and practical contents with which they are created, provide scientific and practical information on the disciplines that are essential for professional practice
- ♦ Practical exercises where the self-assessment process can be carried out to improve learning
- ♦ Its special emphasis on innovative methodologies
- ♦ Theoretical lessons, questions to the expert, debate forums on controversial topics, and individual reflection assignments
- ♦ Content that is accessible from any fixed or portable device with an Internet connection



*You will be able to deepen your knowledge of the most effective methods of action to deal with the appearance of cord prolapse"*

“

*This university qualification will bring you closer to the advances in the clinical handling of the pregnant patient with polyhydramnios"*

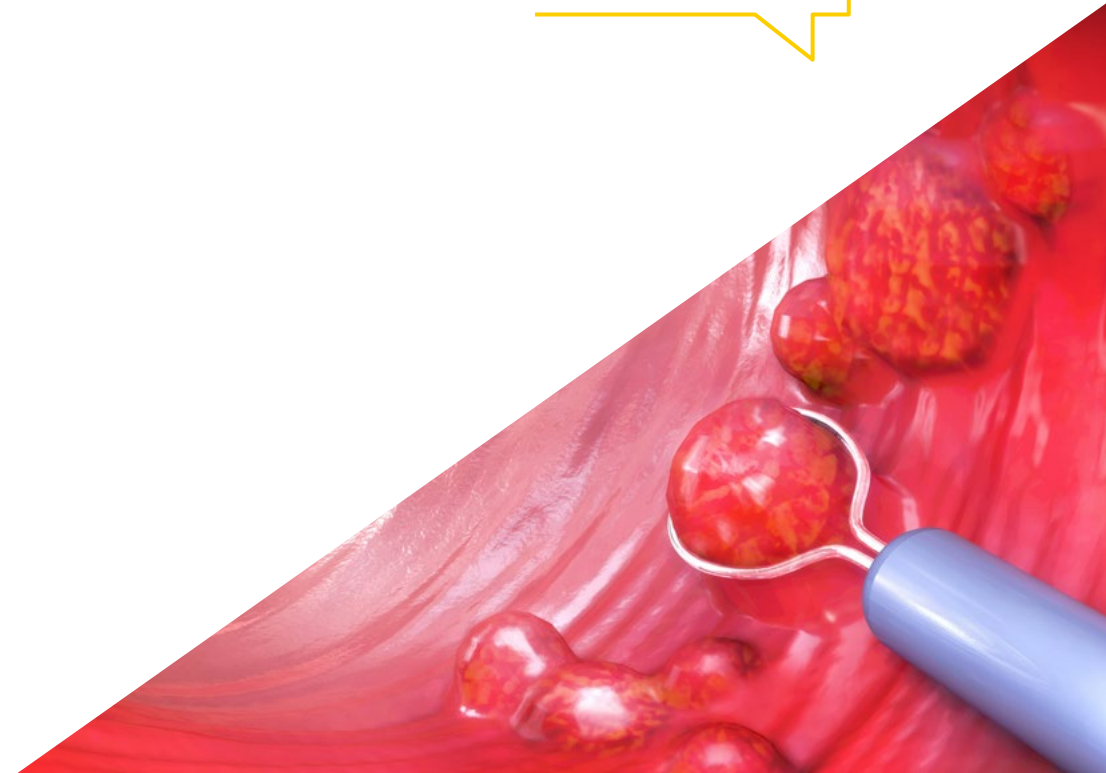
The program's teaching staff includes professionals from the sector who contribute their work experience to this training program, as well as renowned specialists from leading societies and prestigious universities.

Its multimedia content, developed with the latest educational technology, will provide the professional with situated and contextual learning, i.e., a simulated environment that will provide an immersion education programmed to learn in real situations.

The design of this program focuses on Problem-Based Learning, by means of which the professional must try to solve the different professional practice situations that are presented throughout the academic course. For this purpose, the student will be assisted by an innovative interactive video system created by renowned experts.

*The multimedia pills and clinical case simulations will allow you to obtain a much more dynamic and practical vision of obstetric emergencies.*

*Thanks to the Relearning method, you will be able to reduce the hours of study and focus on the most relevant concepts of this Postgraduate Certificate.*





# 02

## Objectives

The purpose of this Postgraduate Certificate is to provide midwives with the scientific evidence that supports the methods and procedures used in the detection of digestive pathologies in pregnant patients. To facilitate this goal, this institution provides the graduate with innovative pedagogical tools and an expert teaching team, which will resolve any questions that arise during the course of this program.







“

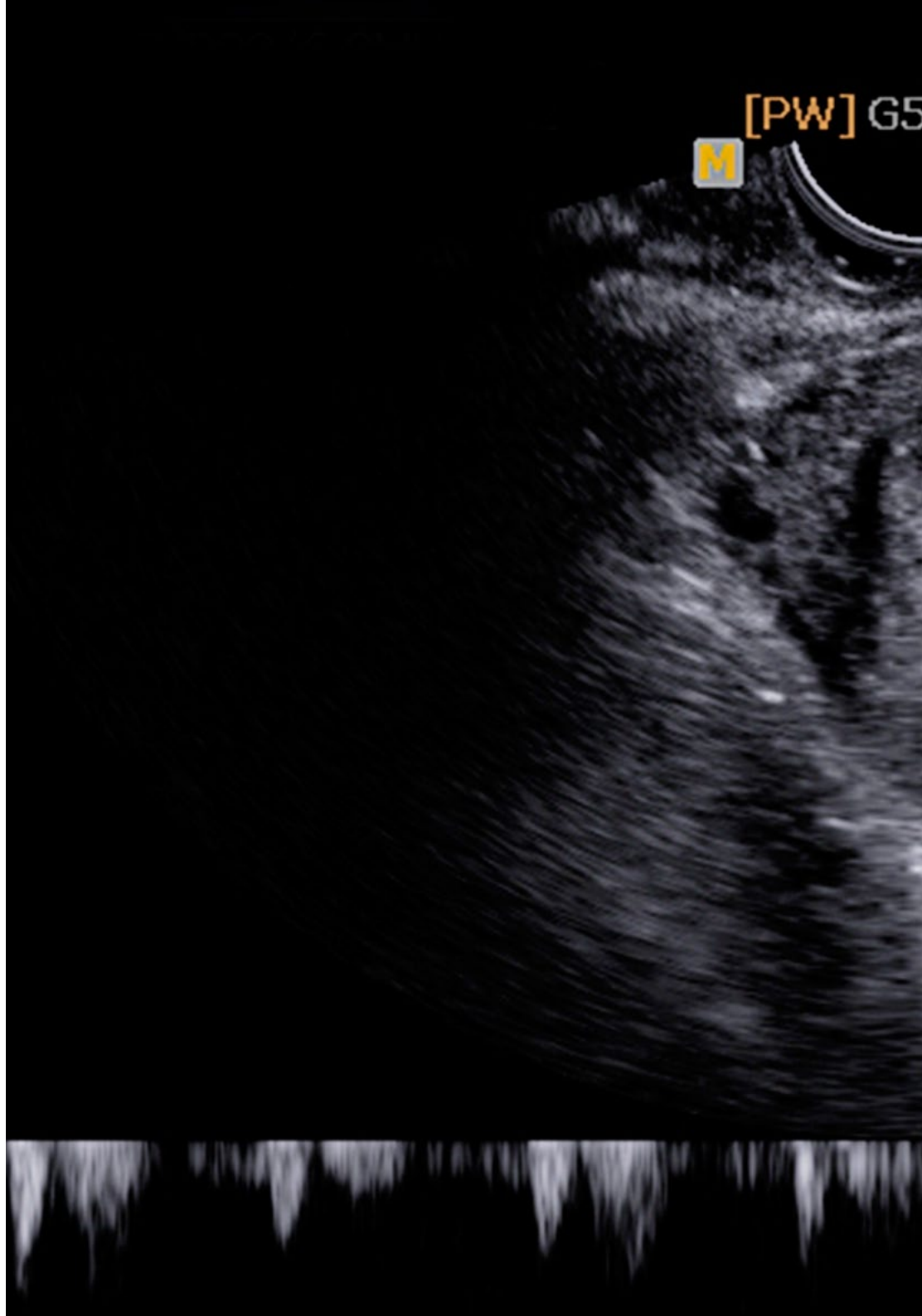
*The virtual library is made up of numerous materials that will allow you to extend the most current information on placental pathologies"*

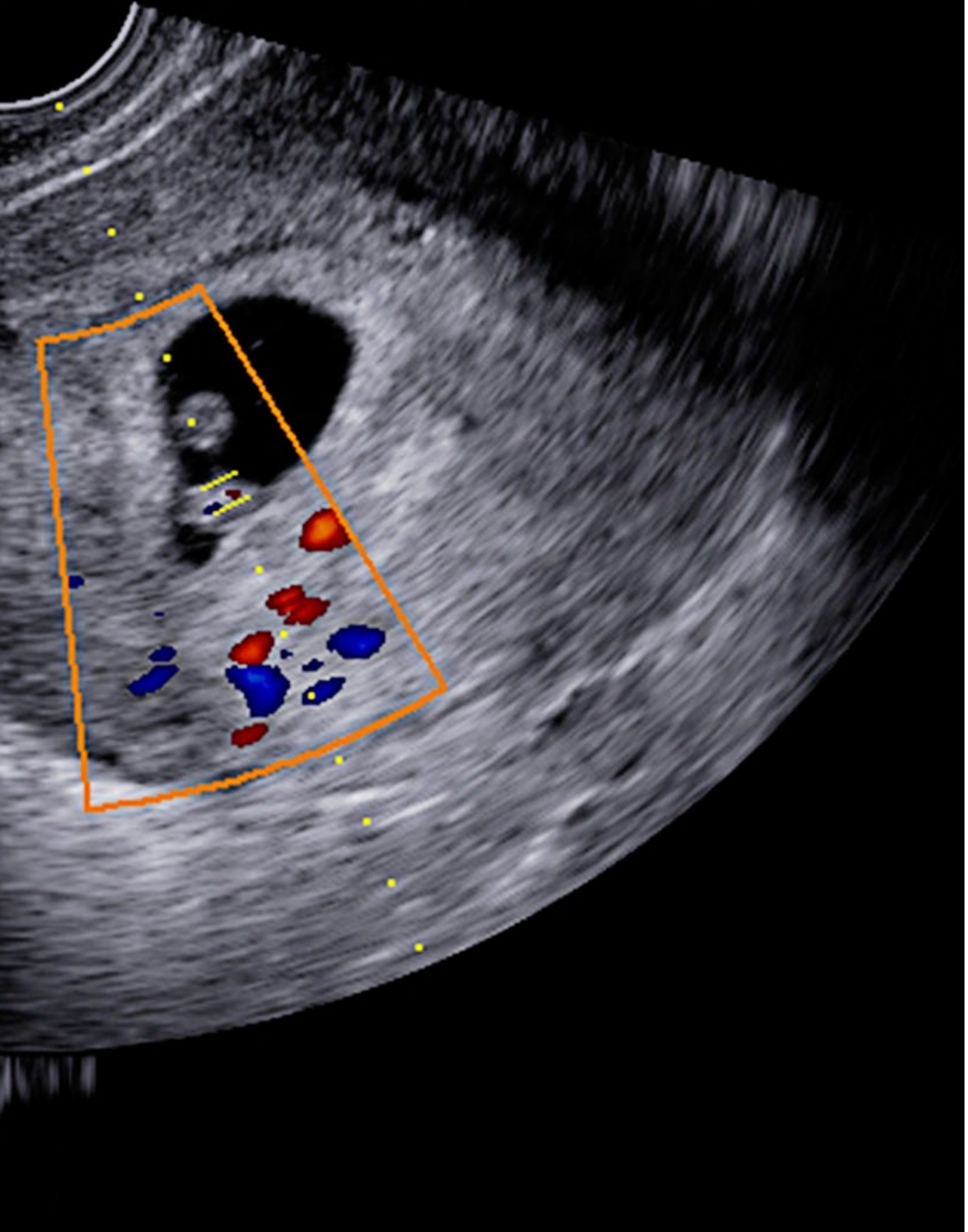


## General Objectives

---

- Understand the concepts and forms of placental accreta, including placenta accreta, placenta increta and placenta percreta
- Identify the risk factors associated with placenta accreta placentae and to understand its clinical and mortality
- Learn the diagnostic methods and the adequate clinical management during delivery of pregnant patients with placenta accreta placentae
- Know the concept of placenta previa and its different classifications, as well as the related risk factors and its clinical and morbimortality
- Acquire skills for the diagnosis and management of gestation and delivery of pregnant patients with placenta previa





## Specific Objectives

---

- ◆ Knowledge of obstetric accidents and how to act is an indispensable role in the midwife's work, since in most cases it is necessary to act within seconds to avoid fatal consequences
- ◆ Instruct on placental problems that can occur in any trimester and about which patients will refer doubts to the obstetrical staff
- ◆ Understand in depth the pathology of the umbilical cord, since some of its defects are accompanied by fetal anomalies, and it is the midwife who is the first to be able to objectify it on many occasions

“

*You will be able to improve your ability to act on the main placental problems present in any trimester of pregnancy”.*



03

# Course Management

The faculty of this university program is made up of midwives who have accumulated many years of experience in the management of pregnant patients throughout the entire pregnancy process. The excellent trajectory and their continuous practice is a guarantee for the students to obtain an actualization of the placental pathologies and the fetal appendages and their main obstetric emergencies, from the best professionals.





“

*An excellent team specialized in Obstetrics and Gynecology will guide you to successfully achieve your goals of updating in placental pathologies and fetal appendages"*

## Management



### Ms. Hernando Orejudo, Isabel

- ♦ Nurse specialized in Obstetrics and Gynecology
- ♦ Midwife. San Carlos Clinical Hospital
- ♦ Outpatient Nurse. La Paz University Hospital
- ♦ University Diploma in Nursing. Autonomous University of Madrid

## Professors

### D. Márquez Espinar, Gumersindo

- ♦ Midwife in in San Carlos Clinical Hospital
- ♦ Professor at the Pontificia University of Salamanca
- ♦ Degree in Nursing
- ♦ Degree in Podiatry
- ♦ Master's Degree in Care Research

### Ms. De Miguel González, María José

- ♦ Nurse at the Obstetrics and gynaecology-Ophthalmology Unit at the San Carlos Clinical Hospital
- ♦ Assistant Nurse at the San Carlos Clinical Hospital
- ♦ Graduate Nurse from the University of Salamanca

### Ms. Hernández Lachehab, Sonia

- ♦ Nurse of the Rural Attention Service in Madrid
- ♦ Midwife at the San Carlos Clinical University Hospital Resident in Madrid
- ♦ Primary Care Nurse in SERMAS
- ♦ Diploma in Nursing from the University of Alcala
- ♦ Nursing in Outpatient Emergencies
- ♦ Specialist in Obstetrics and Gynecology / Midwife by the Teaching Unit of Madrid
- ♦ University Expert in Processes of Nursing Interventions for Pediatric Patients in Risk Situations



**Ms. De la Torre Arandilla, Ana**

- ◆ Midwives in the Obstetrics Service of the University Hospital Puerta de Hierro
- ◆ Midwife in Hospital in San Carlos Clinical Hospital
- ◆ Specialist Obstetric-Gynecological the Puerta De Hierro University Hospital
- ◆ Lecturer at the CTO Academy
- ◆ Member of the research team of the doctoral thesis "Clinical application of nursing science, present reality or pending task?" at the La Paz University Hospital
- ◆ University Diploma in Nursing from the Autonomous University of Madrid

“

*Take the opportunity to learn about the latest advances in this field in order to apply it to your daily practice"*



# 04

## Structure and Content

The curriculum of this Postgraduate Certificate has been designed to provide midwives with a unique academic experience, where they can improve their knowledge of placental pathology and fetal appendages in only 150 teaching hours. In addition, this program devotes special attention to the main obstetric accidents and the most effective methods of action. All of this is complemented by innovative didactic material that can be accessed 24 hours a day, 7 days a week.







“

*You will complete 150 intensive teaching hours on the main risk factors of placental morphological and functional anomalies”*

**Module 1. Pathology of the Placenta and Fetal Appendages. Obstetric Accidents**

- 1.1. Placenta Accrete
  - 1.1.1. Definition and Forms of Placenta Accrete
    - 1.1.1.1. Placenta Accreta
    - 1.1.1.2. Placenta Increta
    - 1.1.1.3. Placenta Percreta
  - 1.1.2. Risk Factors
  - 1.1.3. Morbimortality
  - 1.1.4. Diagnosis
  - 1.1.5. Clinical Management and Delivery of Pregnant Women with Placental Accreta
- 1.2. Placenta Previa
  - 1.2.1. Concept
  - 1.2.2. Classification
  - 1.2.3. Risk Factors
  - 1.2.4. Morbimortality
  - 1.2.5. Diagnosis
  - 1.2.6. Management of gestation and delivery of the pregnant woman with placenta previa
- 1.3. Placental Morphological and Functional Abnormalities
  - 1.3.1. Size Alterations
  - 1.3.2. Morphological Changes
    - 1.3.2.1. Bilobed Placenta
    - 1.3.2.2. Circumvallate Placenta
    - 1.3.2.3. Placenta Succenturiata
    - 1.3.2.4. Espuria
  - 1.3.3. Placental Insufficiency
- 1.4. Umbilical Cord Anomalies
  - 1.4.1. Variants of Umbilical Cord Length and its Complications: Knots
  - 1.4.2. Umbilical cord anomalies in relation to presentation
    - 1.4.2.1. Procubitus
    - 1.4.2.2. Laterocidence
    - 1.4.2.3. Prolapses
      - 1.4.2.3.1. Causes
      - 1.4.2.3.2. Action to be taken in case of Cord Prolapse



- 1.4.3. Placental Insertion Abnormalities
  - 1.4.3.1. Velamentous Insertion
  - 1.4.3.2. Marginal Insertion
  - 1.4.3.3. Previous Vasa
- 1.4.4. Vascular Anomalies
  - 1.4.4.1. Thrombosis
  - 1.4.4.2. Hematomas
  - 1.4.4.3. The Single Umbilical Artery
- 1.5. Alterations of the Amniotic Membranes
  - 1.5.1. Amnion Nodosum
  - 1.5.2. Amniotic Bands
  - 1.5.3. Extramembranous Pregnancy
  - 1.5.4. Premature rupture of membranes and chorioamnionitis
- 1.6. Abnormalities of amniotic fluid
  - 1.6.1. Default: Oligohydramnios and Anhydramnios
    - 1.6.1.1. Concept and Epidemiology
    - 1.6.1.2. Etiological Factors
    - 1.6.1.3. Diagnosis
    - 1.6.1.4. Effects on the Fetus and Neonate
    - 1.6.1.5. Clinical Management and Treatment
  - 1.6.2. In Excess: Polyhydramnios
    - 1.6.2.1. Concept and Epidemiology
    - 1.6.2.2. Etiological Factors
    - 1.6.2.3. Diagnosis
    - 1.6.2.4. Effects on the Fetus and Neonate
    - 1.6.2.5. Clinical Management and Treatment. Delivery Assistance
- 1.7. Uterine Rupture
  - 1.7.1. Concept
  - 1.7.2. Types
  - 1.7.3. Risk Factors
  - 1.7.4. Clinical Diagnosis
  - 1.7.5. Treatment
- 1.8. Premature Detachment of a Normally Positioned Placenta
  - 1.8.1. Concept
  - 1.8.2. Risk Factors
  - 1.8.3. Clinical Diagnosis
  - 1.8.4. Clinical Management
- 1.9. Amniotic Fluid Embolism
  - 1.9.1. Concept
  - 1.9.2. Risk Factors
  - 1.9.3. Pathophysiology
  - 1.9.4. Clinical Symptoms
  - 1.9.5. Diagnosis and Treatment
- 1.10. Shoulder Dystocia
  - 1.10.1. Concept
  - 1.10.2. Risk Factors
  - 1.10.3. Diagnosis
  - 1.10.4. Delivery Method case of Placental Abruption
    - 1.10.4.1. Primary Level Techniques
    - 1.10.4.2. Secondary Level Techniques
    - 1.10.4.3. Tertiary Level Techniques
  - 1.10.5. Postnatal Care and Assessment



*Incorporate into your practice the maneuvers used in shoulder dystocia and the required postnatal care"*



# 05

# Methodology

This academic program offers students a different way of learning. Our methodology uses a cyclical learning approach: **Relearning**.

This teaching system is used, for example, in the most prestigious medical schools in the world, and major publications such as the **New England Journal of Medicine** have considered it to be one of the most effective.





“

*Discover Relearning, a system that abandons conventional linear learning, to take you through cyclical teaching systems: a way of learning that has proven to be extremely effective, especially in subjects that require memorization"*

## At TECH Nursing School we use the Case Method

In a given situation, what should a professional do? Throughout the program, students will face multiple simulated clinical cases, based on real patients, in which they will have to do research, establish hypotheses, and ultimately resolve the situation. There is an abundance of scientific evidence on the effectiveness of the method. Nurses learn better, faster, and more sustainably over time.

*With TECH, nurses can experience a learning methodology that is shaking the foundations of traditional universities around the world.*



According to Dr. Gérvas, the clinical case is the annotated presentation of a patient, or group of patients, which becomes a "case", an example or model that illustrates some peculiar clinical component, either because of its teaching power or because of its uniqueness or rarity. It is essential that the case is based on current professional life, in an attempt to recreate the real conditions in professional nursing practice.

“

*Did you know that this method was developed in 1912, at Harvard, for law students? The case method consisted of presenting students with real-life, complex situations for them to make decisions and justify their decisions on how to solve them. In 1924, Harvard adopted it as a standard teaching method”*

The effectiveness of the method is justified by four fundamental achievements:

1. Nurses who follow this method not only grasp concepts, but also develop their mental capacity, by evaluating real situations and applying their knowledge.
2. The learning process has a clear focus on practical skills that allow the nursing professional to better integrate knowledge acquisition into the hospital setting or primary care.
3. Ideas and concepts are understood more efficiently, given that the example situations are based on real-life.
4. Students like to feel that the effort they put into their studies is worthwhile. This then translates into a greater interest in learning and more time dedicated to working on the course.



## Relearning Methodology

At TECH we enhance the case method with the best 100% online teaching methodology available: Relearning.

This university is the first in the world to combine case studies with a 100% online learning system based on repetition combining a minimum of 8 different elements in each lesson, which is a real revolution compared to the simple study and analysis of cases.



*The nurse will learn through real cases and by solving complex situations in simulated learning environments. These simulations are developed using state-of-the-art software to facilitate immersive learning.*



At the forefront of world teaching, the Relearning method has managed to improve the overall satisfaction levels of professionals who complete their studies, with respect to the quality indicators of the best online university (Columbia University).

With this methodology we have trained more than 175,000 nurses with unprecedented success in all specialities regardless of practical workload. Our pedagogical methodology is developed in a highly competitive environment, with a university student body with a strong socioeconomic profile and an average age of 43.5 years old.

*Relearning will allow you to learn with less effort and better performance, involving you more in your specialization, developing a critical mindset, defending arguments, and contrasting opinions: a direct equation to success.*

In our program, learning is not a linear process, but rather a spiral (learn, unlearn, forget, and re-learn). Therefore, we combine each of these elements concentrically.

The overall score obtained by TECH's learning system is 8.01, according to the highest international standards.



This program offers the best educational material, prepared with professionals in mind:



### Study Material

All teaching material is produced by the specialists who teach the course, specifically for the course, so that the teaching content is really specific and precise.

These contents are then applied to the audiovisual format, to create the TECH online working method. All this, with the latest techniques that offer high quality pieces in each and every one of the materials that are made available to the student.



### Nursing Techniques and Procedures on Video

We introduce you to the latest techniques, to the latest educational advances, to the forefront of current medical techniques. All of this in direct contact with students and explained in detail so as to aid their assimilation and understanding. And best of all, you can watch them as many times as you want.



### Interactive Summaries

The TECH team presents the contents attractively and dynamically in multimedia lessons that include audio, videos, images, diagrams, and concept maps in order to reinforce knowledge.

This exclusive educational system for presenting multimedia content was awarded by Microsoft as a "European Success Story".



### Additional Reading

Recent articles, consensus documents and international guidelines, among others. In TECH's virtual library, students will have access to everything they need to complete their course.





#### Expert-Led Case Studies and Case Analysis

Effective learning ought to be contextual. Therefore, TECH presents real cases in which the expert will guide students, focusing on and solving the different situations: a clear and direct way to achieve the highest degree of understanding.



#### Testing & Retesting

We periodically evaluate and re-evaluate students' knowledge throughout the program, through assessment and self-assessment activities and exercises, so that they can see how they are achieving their goals.



#### Classes

There is scientific evidence suggesting that observing third-party experts can be useful.

Learning from an Expert strengthens knowledge and memory, and generates confidence in future difficult decisions.



#### Quick Action Guides

TECH offers the most relevant contents of the course in the form of worksheets or quick action guides. A synthetic, practical, and effective way to help students progress in their learning.





06

# Certificate

The Postgraduate Certificate in Update on Placental and Fetal Adnexal Pathology and its Main Obstetric Emergencies in Nursing guarantees students, in addition to the most rigorous and up-to-date education, access to a Postgraduate Certificate issued by TECH Technological University.





“

*Successfully complete this program and receive your university qualification without having to travel or fill out laborious paperwork”*

This **Postgraduate Certificate in Update on Placental and Fetal Adnexal Pathology and its Main Obstetric Emergencies in Nursing** contains the most complete and up-to-date scientific program on the market.

After the student has passed the assessments, they will receive their corresponding **Postgraduate Certificate** issued by **TECH Technological University** via tracked delivery\*.

The diploma issued by **TECH Technological University** will reflect the qualification obtained in the Postgraduate Certificate, and meets the requirements commonly demanded by labor exchanges, competitive examinations, and professional career evaluation committees.

Title: **Postgraduate Certificate in Update on Placental and Fetal Adnexal Pathology and its Main Obstetric Emergencies in Nursing**

Official N° of Hours: **150 h.**



\*Apostille Convention. In the event that the student wishes to have their paper diploma issued with an apostille, TECH EDUCATION will make the necessary arrangements to obtain it, at an additional cost.



future  
health confidence people  
education information tutors  
guarantee accreditation teaching  
institutions technology learning  
community commitment  
personalized service innovation  
knowledge present  
development language  
virtual classroom

**tech** technological  
university

## Postgraduate Certificate

Update on Placental and  
Fetal Adnexal Pathology  
and its Main Obstetric  
Emergencies in Nursing

- » Modality: online
- » Duration: 6 weeks
- » Certificate: TECH Technological University
- » Dedication: 16h/week
- » Schedule: at your own pace
- » Exams: online

# Postgraduate Certificate Update on Placental and Fetal Adnexal Pathology and its Main Obstetric Emergencies in Nursing

