

Postgraduate Certificate

Use of Artificial Intelligence and Virtual Reality in Emotional Support in Nursing



Postgraduate Certificate

Use of Artificial Intelligence and Virtual Reality in Emotional Support in Nursing

- » Modality: online
- » Duration: 6 weeks
- » Certificate: TECH Global University
- » Accreditation: 6 ECTS
- » Schedule: at your own pace
- » Exams: online

Website: www.techtute.com/us/nursing/postgraduate-certificate/use-artificial-intelligence-virtual-reality-emotional-support-nursing

Index

01

Introduction to the Program

p. 4

02

Why Study at TECH?

p. 8

03

Syllabus

p. 12

04

Teaching Objectives

p. 16

05

Study Methodology

p. 20

06

Teaching Staff

p. 30

07

Certificate

p. 34

01

Introduction to the Program

The Use of Artificial Intelligence and Virtual Reality in Emotional Support in Nursing is gaining ground as a ground-breaking strategy for comprehensive patient care. In this sense, intelligent systems offer professionals the opportunity to personalize emotional care through virtual assistants that interact with patients on an ongoing basis. Likewise, these instruments contribute to the creation of immersive experiences that promote relaxation and the management of psychological conditions such as Anxiety. In view of this, experts need to stay at the forefront of the most modern strategies to incorporate these technologies into their clinical practice to optimize emotional health. For this reason, TECH is launching a cutting-edge online university program focused on this area.



“

Thanks to this 100% online program, you will master the most advanced Artificial Intelligence and Virtual Reality techniques to offer high-quality Emotional Support”

According to a new study by the United Nations, more than 450 million people worldwide suffer from various Mental Disorders ranging from Stress to Chronic Depression. Faced with this situation, the implementation of technological solutions such as Artificial Intelligence or Virtual Reality are opening new doors to improve therapeutic assistance. For example, the use of virtual assistants makes it easier for nurses to provide individualized support to users. Specialists can also use intelligent systems to simulate therapeutic environments that help people overcome their fears.

In this context, TECH presents an innovative program on the Use of Artificial Intelligence and Virtual Reality in Emotional Support in Nursing. Designed by leaders in this field, the academic itinerary will delve into subjects ranging from the creation of chatbots with specialized software such as Youper or sophisticated techniques to ensure the security of clinical data to the use of Virtual Reality for motor rehabilitation. In line with this, the teaching materials will provide professionals with various strategies for the early identification of any anomalies in the condition of users. In this way, graduates will acquire advanced skills in the precise management of intelligent systems to considerably improve people's quality of life.

On the other hand, this university program is taught in a flexible 100% online modality, allowing nurses to individually plan their schedules and pace of study. In this way, all they will need to keep up to date is a device with Internet access (their mobile phone, computer or tablet will do). The program also offers the most avant-garde methodology on the market today: Relearning. This system, promoted by TECH, is based on the repetition of the most important content to guarantee a progressive, natural and efficient assimilation without having to resort to traditional memorization.

This **Postgraduate Certificate in Use of Artificial Intelligence and Virtual Reality in Emotional Support in Nursing** contains the most complete and up-to-date scientific program on the market. The most important features include:

- ♦ The development of case studies presented by experts in Artificial Intelligence applied to Nursing
- ♦ The graphic, schematic and eminently practical contents with which it is conceived gather scientific and practical information on those disciplines that are indispensable for professional practice
- ♦ Practical exercises where the self-assessment process can be carried out to improve learning
- ♦ Its special emphasis on innovative methodologies
- ♦ Theoretical lessons, questions to the expert, debate forums on controversial topics, and individual reflection assignments
- ♦ Content that is accessible from any fixed or portable device with an Internet connection



You will create safe therapeutic environments that help individuals overcome psychological conditions such as Social Phobia"

“

TECH's unique Relearning system will allow you to update your knowledge at your own pace, without depending on external teaching conditions”

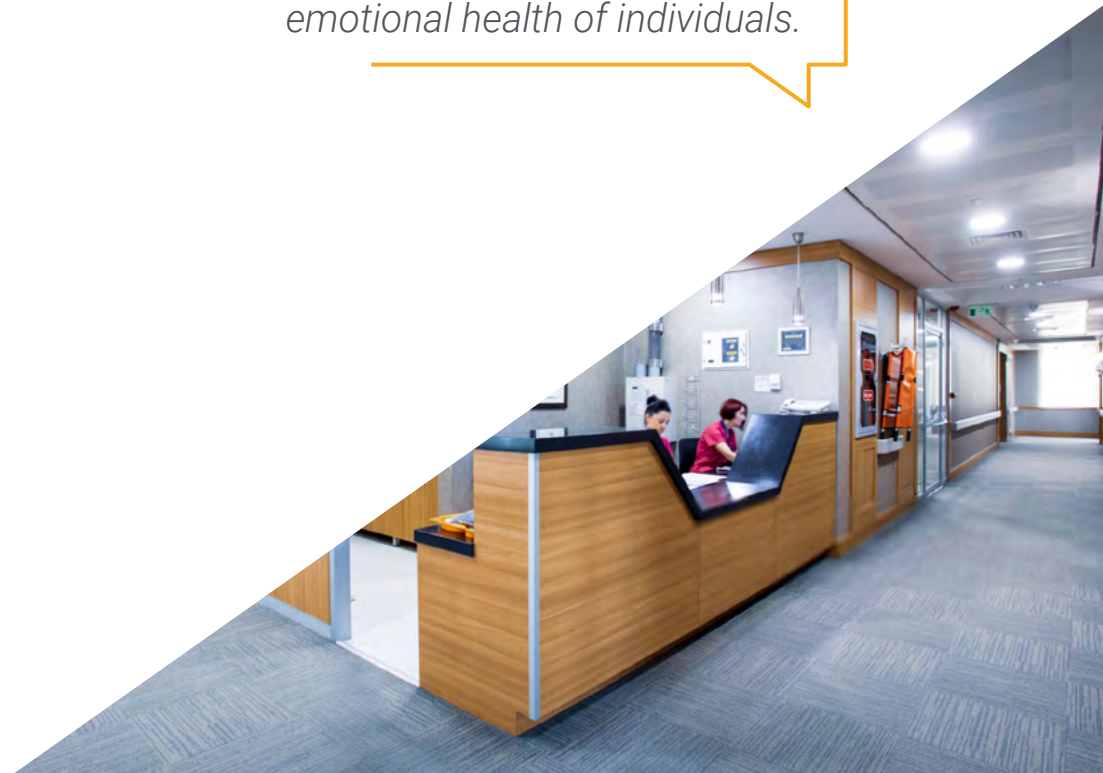
You will develop Conversational Assistants capable of providing personalized support to patients, adapting to their specific circumstances.

You will delve into the most modern strategies for evaluating the impact of intelligent systems on the emotional health of individuals.

The program's teaching staff includes professionals from the sector who contribute their work experience to this specializing program, as well as renowned specialists from leading societies and prestigious universities.

The multimedia content, developed with the latest educational technology, will provide the professional with situated and contextual learning, i.e., a simulated environment that will provide immersive education programmed to learn in real situations.

This program is designed around Problem-Based Learning, whereby the professional must try to solve the different professional practice situations that arise during the course. For this purpose, students will be assisted by an innovative interactive video system created by renowned experts.



02

Why Study at TECH?

TECH is the world's largest online university. With an impressive catalog of more than 14,000 university programs available in 11 languages, it is positioned as a leader in employability, with a 99% job placement rate. In addition, it relies on an enormous faculty of more than 6,000 professors of the highest international renown.



“

*Study at the world's largest online university
and guarantee your professional success.
The future starts at TECH”*

The world's best online university, according to FORBES

The prestigious Forbes magazine, specialized in business and finance, has highlighted TECH as "the best online university in the world" This is what they have recently stated in an article in their digital edition in which they echo the success story of this institution, "thanks to the academic offer it provides, the selection of its teaching staff, and an innovative learning method oriented to form the professionals of the future".

Forbes

The best online university in the world

The most complete
syllabus

The most complete syllabuses on the university scene

TECH offers the most complete syllabuses on the university scene, with programs that cover fundamental concepts and, at the same time, the main scientific advances in their specific scientific areas. In addition, these programs are continuously updated to guarantee students the academic vanguard and the most demanded professional skills. and the most in-demand professional competencies. In this way, the university's qualifications provide its graduates with a significant advantage to propel their careers to success.

The best top international faculty

TECH's faculty is made up of more than 6,000 professors of the highest international prestige. Professors, researchers and top executives of multinational companies, including Isaiah Covington, performance coach of the Boston Celtics; Magda Romanska, principal investigator at Harvard MetaLAB; Ignacio Wistumba, chairman of the department of translational molecular pathology at MD Anderson Cancer Center; and D.W. Pine, creative director of TIME magazine, among others.

TOP
international faculty



The most effective methodology

A unique learning method

TECH is the first university to use Relearning in all its programs. This is the best online learning methodology, accredited with international teaching quality certifications, provided by prestigious educational agencies. In addition, this innovative academic model is complemented by the "Case Method", thereby configuring a unique online teaching strategy. Innovative teaching resources are also implemented, including detailed videos, infographics and interactive summaries.

The world's largest online university

TECH is the world's largest online university. We are the largest educational institution, with the best and widest digital educational catalog, one hundred percent online and covering most areas of knowledge. We offer the largest selection of our own degrees and accredited online undergraduate and postgraduate degrees. In total, more than 14,000 university programs, in ten different languages, making us the largest educational institution in the world.

World's No.1

The World's largest online university

The official online university of the NBA

TECH is the official online university of the NBA. Thanks to our agreement with the biggest league in basketball, we offer our students exclusive university programs, as well as a wide variety of educational resources focused on the business of the league and other areas of the sports industry. Each program is made up of a uniquely designed syllabus and features exceptional guest hosts: professionals with a distinguished sports background who will offer their expertise on the most relevant topics.

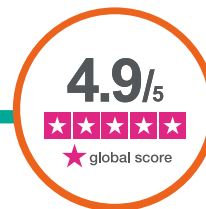
Leaders in employability

TECH has become the leading university in employability. Ninety-nine percent of its students obtain jobs in the academic field they have studied within one year of completing any of the university's programs. A similar number achieve immediate career enhancement. All this thanks to a study methodology that bases its effectiveness on the acquisition of practical skills, which are absolutely necessary for professional development.



Google Premier Partner

The American technology giant has awarded TECH the Google Premier Partner badge. This award, which is only available to 3% of the world's companies, highlights the efficient, flexible and tailored experience that this university provides to students. The recognition not only accredits the maximum rigor, performance and investment in TECH's digital infrastructures, but also places this university as one of the world's leading technology companies.



The top-rated university by its students

Students have positioned TECH as the world's top-rated university on the main review websites, with a highest rating of 4.9 out of 5, obtained from more than 1,000 reviews. These results consolidate TECH as the benchmark university institution at an international level, reflecting the excellence and positive impact of its educational model.



03 Syllabus

This Artificial Intelligence-Assisted Emotional Support program will provide nurses with a comprehensive approach to managing emerging technologies and optimizing emotional care for patients. To this end, the teaching content will analyze issues ranging from the creation of chatbots using specialized software such as Wysa or methods to guarantee the confidentiality of clinical data stored in intelligent systems to the use of Virtual Reality to design individualized therapeutic plans to overcome emotional disorders such as phobias.



“

You will use Artificial Intelligence tools to detect early signs of Emotional Disorders, which will help you to carry out interventions more quickly and effectively”

Module 1. Using Artificial Intelligence and Virtual Reality in Emotional Support in Nursing

- 1.1. Introduction to Artificial Intelligence-Assisted Emotional Support (Woebot)
 - 1.1.1. Concept and Relevance of Emotional Support in Artificial Intelligence
 - 1.1.2. Benefits and Limitations of Artificial Intelligence Emotional Support
 - 1.1.3. Main Applications in the Field of Mental Health
 - 1.1.4. Differences with Traditional Emotional Support
- 1.2. Chatbots in Emotional Support
 - 1.2.1. Types of Chatbots Available for Emotional Support (Replika, Wysa)
 - 1.2.2. Examples of Mental Health Chatbots
 - 1.2.3. Limitations of Chatbots in Emotional Support
 - 1.2.4. Case Studies of the Use of Chatbots in the Healthcare Sector
- 1.3. Artificial Intelligence Tools for Mental Health (Youper, Koko)
 - 1.3.1. Artificial Intelligence Success Stories in Mental Health
 - 1.3.2. Current Emotional Support Tools
 - 1.3.3. Integrating Artificial Intelligence in Mental Health Therapies
 - 1.3.4. Measuring the Effectiveness of Artificial Intelligence Tools
- 1.4. Privacy and Security in Artificial Intelligence-Assisted Emotional Support
 - 1.4.1. Importance of Privacy in Artificial Intelligence-Assisted Emotional Support
 - 1.4.2. Privacy Regulations in the Use of Artificial Intelligence in Healthcare
 - 1.4.3. Data Security in Emotional Support Systems
 - 1.4.4. Ethics and Protection of Sensitive Information
- 1.5. Comparison between Traditional Emotional Support and Emotional Support with Artificial Intelligence
 - 1.5.1. Current Challenges in Both Approaches
 - 1.5.2. Benefits of Combining Artificial Intelligence with Traditional Methods
 - 1.5.3. Case Studies in Mixed Emotional Support
 - 1.5.4. Implementation Challenges and Acceptance of Artificial Intelligence Support
- 1.6. Virtual Reality in Patient Care (Psious, RelieVRx)
 - 1.6.1. Introduction to Virtual Reality in Healthcare
 - 1.6.2. Virtual Reality Devices and Their Medical Application
 - 1.6.3. Virtual Reality in Patient Preparation
 - 1.6.4. Evolution of Virtual Reality in Healthcare





- 1.7. Virtual Reality Applications in Rehabilitation (MindMotion, VRHealth)
 - 1.7.1. Using Virtual Reality in Motor Rehabilitation
 - 1.7.2. Pain Management Using Virtual Reality
 - 1.7.3. Treatment of Phobias and Anxiety Disorders
 - 1.7.4. Examples of Successful Rehabilitation with Virtual Reality
- 1.8. Ethical Considerations in the Use of Virtual Reality
 - 1.8.1. Ethics in Virtual Reality Treatments
 - 1.8.2. Patient Safety in Virtual Environments
 - 1.8.3. Risks of Addiction and Overexposure to Virtual Reality
 - 1.8.4. Regulations in the Use of Virtual Reality in Healthcare
- 1.9. Comparison of Traditional Treatments and Virtual Reality
 - 1.9.1. Differences in the Effectiveness of Both Approaches
 - 1.9.2. Use Cases for Mixed Treatments
 - 1.9.3. Cost-Benefit Analysis
 - 1.9.4. Expert Opinion on the Use of Virtual Reality
- 1.10. Future of Virtual Reality in Patient Care
 - 1.10.1. Technological Advances in Virtual Reality Applied to Healthcare
 - 1.10.2. Predictions on the Impact of Virtual Reality on Healthcare
 - 1.10.3. Integrating Virtual Reality into Regular Medical Practices
 - 1.10.4. Future Possibilities for Virtual Reality Training

“

The specialized reading material that you will find in the Virtual Campus will help you to further expand the rigorous information provided in this university program”

04

Teaching Objectives

This TECH study on the Use of Artificial Intelligence and Virtual Reality in Emotional Support in Nursing is designed to enable professionals to use emerging technologies to improve the emotional care of patients. Graduates will develop advanced skills to manage intelligent systems efficiently and create safe therapeutic environments for individuals. In this way, nurses will integrate cutting-edge solutions into their daily clinical practice and optimize therapeutic programs for the optimal approach to various Emotional Disorders.



A close-up photograph of a person's face, focusing on the eye and cheek area. A thick, white, creamy substance is applied to the skin, particularly around the eye and cheek. The person's eye is closed, and their skin appears slightly red or irritated. The background is a solid teal color.

“

You will have a solid understanding of the ethical regulations linked to the use of Artificial Intelligence and Virtual Reality in the clinical environment, with an approach based on information protection”



General Objectives

- ♦ Develop advanced skills to integrate Artificial Intelligence tools into clinical practice, improving patient care and the efficiency of care processes
- ♦ Be able to design and implement personalized conversational assistants that optimize communication and clinical information management
- ♦ Manage intelligent systems for resource planning, remote monitoring of users and individualization of care plans
- ♦ Utilize emerging technologies such as Virtual Reality to provide psychological support to individuals
- ♦ Use applications based on Artificial Intelligence to create personalized physical activity and nutrition programs
- ♦ Develop scientific dissemination resources based on specialized software, such as presentations, posters or interactive avatars
- ♦ Ensure responsible handling of sensitive personal data, complying with ethical standards and privacy regulations in the adoption of technological tools
- ♦ Implement AI-assisted remote monitoring systems to improve early detection of clinical complications and optimize the management of chronic diseases
- ♦ Design personalized care plans based on data analysis and supported by intelligent systems
- ♦ Acquire a multidisciplinary approach to facilitate rapid adaptation to changes in the healthcare environment





Specific Objectives

- ♦ Delve into the applications of Artificial Intelligence in the emotional support of patients through tools such as Woebot and Replika
- ♦ Implement virtual reality programs for mental health management and rehabilitation
- ♦ Analyze the ethical and regulatory considerations related to the use of intelligent systems in emotional support
- ♦ Compare traditional and technological methods to identify best practices in psychological support



The university qualification will include the analysis of numerous real clinical cases, which will bring you closer to the methodologies used in the implementation of Artificial Intelligence and Virtual Reality in Nursing"

05 Study Methodology

TECH is the world's first university to combine the **case study** methodology with **Relearning**, a 100% online learning system based on guided repetition.

This disruptive pedagogical strategy has been conceived to offer professionals the opportunity to update their knowledge and develop their skills in an intensive and rigorous way. A learning model that places students at the center of the educational process giving them the leading role, adapting to their needs and leaving aside more conventional methodologies.



“

TECH will prepare you to face new challenges in uncertain environments and achieve success in your career”

The student: the priority of all TECH programs

In TECH's study methodology, the student is the main protagonist.

The teaching tools of each program have been selected taking into account the demands of time, availability and academic rigor that, today, not only students demand but also the most competitive positions in the market.

With TECH's asynchronous educational model, it is students who choose the time they dedicate to study, how they decide to establish their routines, and all this from the comfort of the electronic device of their choice. The student will not have to participate in live classes, which in many cases they will not be able to attend. The learning activities will be done when it is convenient for them. They can always decide when and from where they want to study.

“

*At TECH you will NOT have live classes
(which you might not be able to attend)”*



The most comprehensive study plans at the international level

TECH is distinguished by offering the most complete academic itineraries on the university scene. This comprehensiveness is achieved through the creation of syllabi that not only cover the essential knowledge, but also the most recent innovations in each area.

By being constantly up to date, these programs allow students to keep up with market changes and acquire the skills most valued by employers. In this way, those who complete their studies at TECH receive a comprehensive education that provides them with a notable competitive advantage to further their careers.

And what's more, they will be able to do so from any device, pc, tablet or smartphone.

“

TECH's model is asynchronous, so it allows you to study with your pc, tablet or your smartphone wherever you want, whenever you want and for as long as you want”

Case Studies and Case Method

The case method has been the learning system most used by the world's best business schools. Developed in 1912 so that law students would not only learn the law based on theoretical content, its function was also to present them with real complex situations. In this way, they could make informed decisions and value judgments about how to resolve them. In 1924, Harvard adopted it as a standard teaching method.

With this teaching model, it is students themselves who build their professional competence through strategies such as Learning by Doing or Design Thinking, used by other renowned institutions such as Yale or Stanford.

This action-oriented method will be applied throughout the entire academic itinerary that the student undertakes with TECH. Students will be confronted with multiple real-life situations and will have to integrate knowledge, research, discuss and defend their ideas and decisions. All this with the premise of answering the question of how they would act when facing specific events of complexity in their daily work.



Relearning Methodology

At TECH, case studies are enhanced with the best 100% online teaching method: Relearning.

This method breaks with traditional teaching techniques to put the student at the center of the equation, providing the best content in different formats. In this way, it manages to review and reiterate the key concepts of each subject and learn to apply them in a real context.

In the same line, and according to multiple scientific researches, reiteration is the best way to learn. For this reason, TECH offers between 8 and 16 repetitions of each key concept within the same lesson, presented in a different way, with the objective of ensuring that the knowledge is completely consolidated during the study process.

Relearning will allow you to learn with less effort and better performance, involving you more in your specialization, developing a critical mindset, defending arguments, and contrasting opinions: a direct equation to success.



A 100% online Virtual Campus with the best teaching resources

In order to apply its methodology effectively, TECH focuses on providing graduates with teaching materials in different formats: texts, interactive videos, illustrations and knowledge maps, among others. All of them are designed by qualified teachers who focus their work on combining real cases with the resolution of complex situations through simulation, the study of contexts applied to each professional career and learning based on repetition, through audios, presentations, animations, images, etc.

The latest scientific evidence in the field of Neuroscience points to the importance of taking into account the place and context where the content is accessed before starting a new learning process. Being able to adjust these variables in a personalized way helps people to remember and store knowledge in the hippocampus to retain it in the long term. This is a model called Neurocognitive context-dependent e-learning that is consciously applied in this university qualification.

In order to facilitate tutor-student contact as much as possible, you will have a wide range of communication possibilities, both in real time and delayed (internal messaging, telephone answering service, email contact with the technical secretary, chat and videoconferences).

Likewise, this very complete Virtual Campus will allow TECH students to organize their study schedules according to their personal availability or work obligations. In this way, they will have global control of the academic content and teaching tools, based on their fast-paced professional update.



The online study mode of this program will allow you to organize your time and learning pace, adapting it to your schedule"

The effectiveness of the method is justified by four fundamental achievements:

1. Students who follow this method not only achieve the assimilation of concepts, but also a development of their mental capacity, through exercises that assess real situations and the application of knowledge.
2. Learning is solidly translated into practical skills that allow the student to better integrate into the real world.
3. Ideas and concepts are understood more efficiently, given that the example situations are based on real-life.
4. Students like to feel that the effort they put into their studies is worthwhile. This then translates into a greater interest in learning and more time dedicated to working on the course.

The university methodology top-rated by its students

The results of this innovative teaching model can be seen in the overall satisfaction levels of TECH graduates.

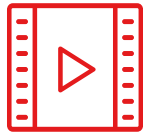
The students' assessment of the teaching quality, the quality of the materials, the structure of the program and its objectives is excellent. Not surprisingly, the institution became the top-rated university by its students according to the global score index, obtaining a 4.9 out of 5.

Access the study contents from any device with an Internet connection (computer, tablet, smartphone) thanks to the fact that TECH is at the forefront of technology and teaching.

You will be able to learn with the advantages that come with having access to simulated learning environments and the learning by observation approach, that is, Learning from an expert.



As such, the best educational materials, thoroughly prepared, will be available in this program:



Study Material

All teaching material is produced by the specialists who teach the course, specifically for the course, so that the teaching content is highly specific and precise.

This content is then adapted in an audiovisual format that will create our way of working online, with the latest techniques that allow us to offer you high quality in all of the material that we provide you with.



Practicing Skills and Abilities

You will carry out activities to develop specific competencies and skills in each thematic field. Exercises and activities to acquire and develop the skills and abilities that a specialist needs to develop within the framework of the globalization we live in.



Interactive Summaries

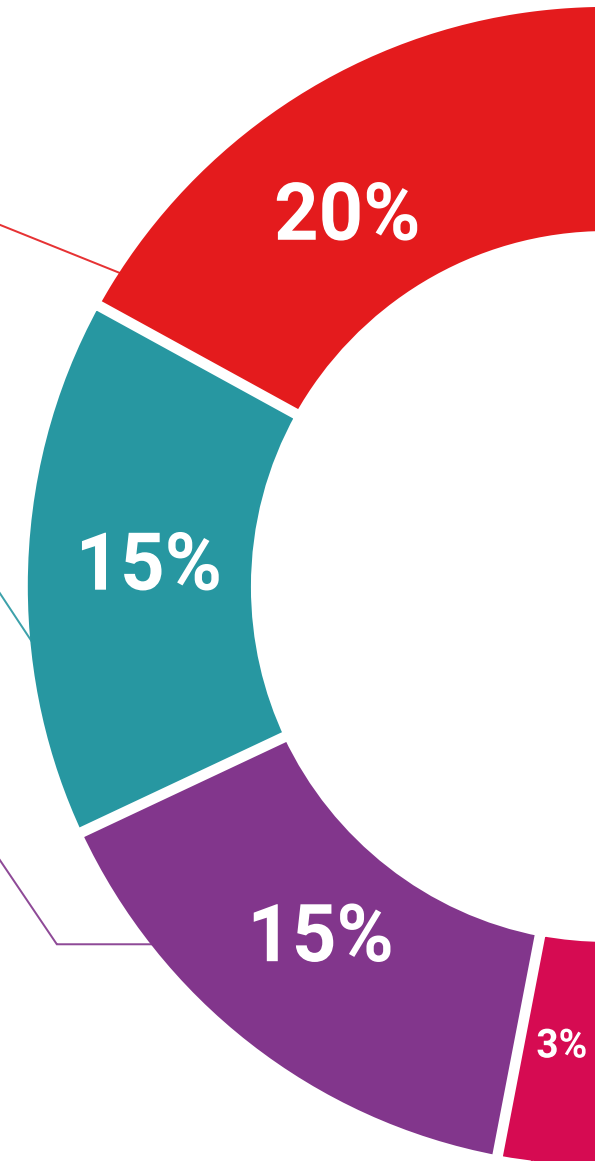
We present the contents attractively and dynamically in multimedia lessons that include audio, videos, images, diagrams, and concept maps in order to reinforce knowledge.

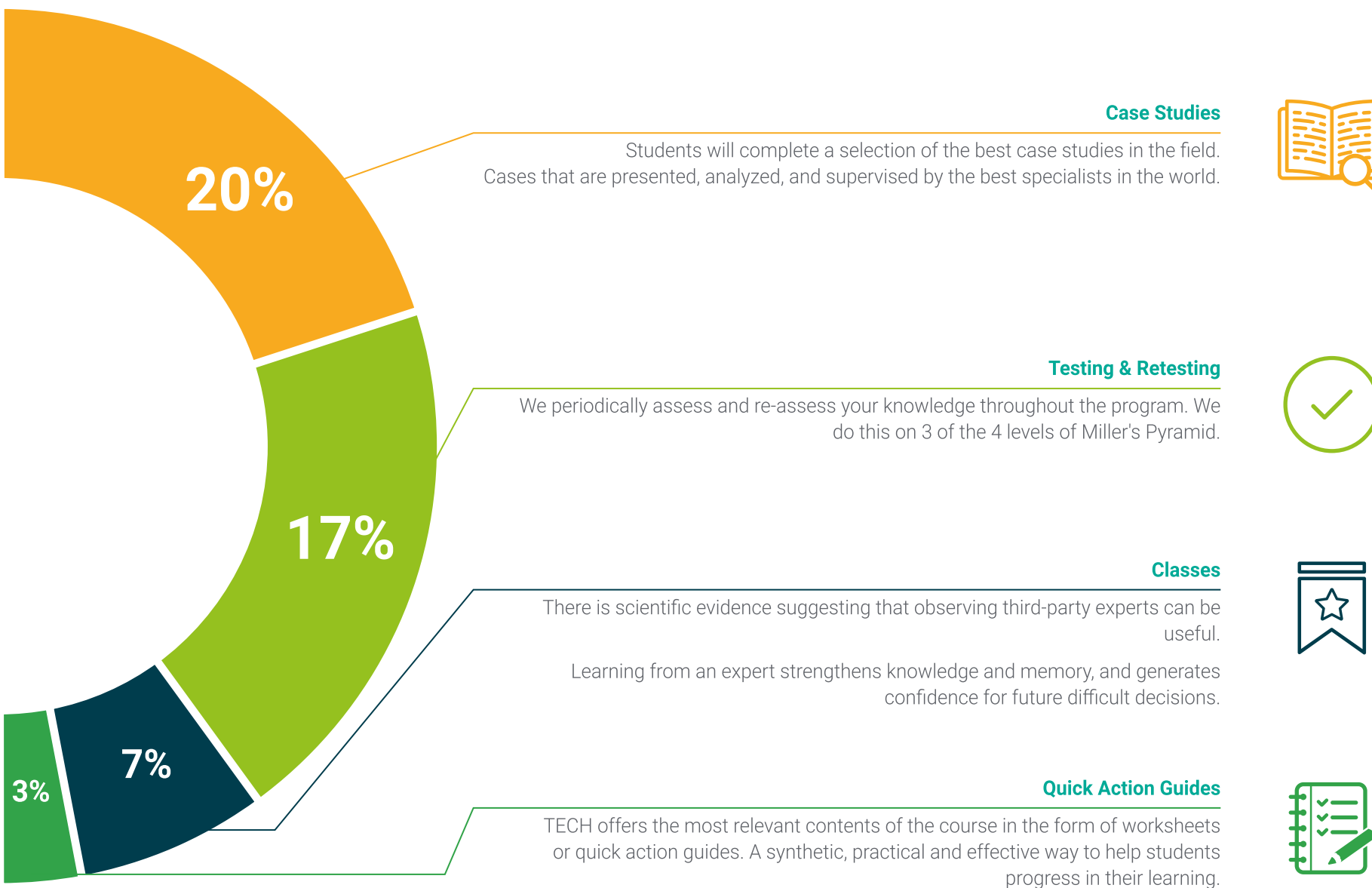
This exclusive educational system for presenting multimedia content was awarded by Microsoft as a "European Success Story".



Additional Reading

Recent articles, consensus documents, international guides... In our virtual library you will have access to everything you need to complete your education.





06

Teaching Staff

TECH's priority is to make the most comprehensive and up-to-date university programs on the educational market available to everyone. For this reason, it carries out a meticulous process to establish its respective teaching staff. As a result of this effort, this program has the participation of renowned experts in the use of Artificial Intelligence and Virtual Reality in Emotional Support applied to Nursing. In this way, they have produced numerous teaching materials that stand out both for their excellent quality and for meeting the demands of the educational market.



A photograph of a clear glass bottle with a white cap, partially filled with water. Next to it is a bright green apple resting on a dark, textured cloth. The background is a soft-focus outdoor scene with a person's arm visible. The image is partially covered by a large teal geometric shape and a white diagonal shape.

“

*The teaching staff of this university program
will offer you the keys to getting the most
out of Artificial Intelligence and Virtual
Reality in Emotional Support”*

Management



Dr. Peralta Martín-Palomino, Arturo

- CEO and CTO at Prometheus Global Solutions
- CTO at Korporate Technologies
- CTO at AI Shepherds GmbH
- Consultant and Strategic Business Advisor at Alliance Medical
- Director of Design and Development at DocPath
- Doctorate in Psychology from the University of Castilla La Mancha
- Doctorate in Economics, Business and Finance from the Camilo José Cela University
- Doctorate in Psychology from University of Castilla La Mancha
- Master's Degree in Executive MBA from the Isabel I University
- Master's Degree in Sales and Marketing Management from the Isabel I University
- Expert Master's Degree in Big Data by Hadoop Training
- Master's Degree in Advanced Information Technologies from the University of Castilla La Mancha
- Member of: SMILE Research Group



Professors

Mr. Popescu Radu, Daniel Vasile

- ◆ Independent Specialist in Pharmacology, Nutrition and Dietetics
- ◆ Freelance Producer of Didactic and Scientific Content
- ◆ Nutritionist and Community Dietitian
- ◆ Community Pharmacist
- ◆ Researcher
- ◆ Master's Degree in Nutrition and Health from the Open University of Catalonia
- ◆ Master's Degree in Psychopharmacology from the University of Valencia
- ◆ Pharmacist from the Complutense University of Madrid
- ◆ Nutritionist-Dietitian by the European University Miguel de Cervantes

Mr. Del Rey Sánchez, Alejandro

- ◆ In Charge of Implementing Programs to Improve Tactical Emergency Care
- ◆ Degree in Industrial Organization Engineering
- ◆ Certification in Big Data and Business Analytics
- ◆ Certification in Microsoft Excel Advanced, VBA, KPI and DAX
- ◆ Certification in CIS Telecommunication and Information Systems

Ms. Del Rey Sánchez, Cristina

- ◆ Talent Management Administrator at Securitas Seguridad España, S.L.
- ◆ Extracurricular Activities Center Coordinator
- ◆ Tutor and pedagogical interventions with Primary and Secondary Education students
- ◆ Postgraduate in Development, Delivery and Tutoring of e-Learning Training Actions
- ◆ Postgraduate in Early Childhood Care
- ◆ Degree in Pedagogy from the Complutense University of Madrid

07 Certificate

The Postgraduate Certificate in Use of Artificial Intelligence and Virtual Reality in Emotional Support in Nursing guarantees students, in addition to the most rigorous and up-to-date education, access to a Postgraduate Certificate issued by TECH Global University.



“

*Successfully complete this program and
receive your university qualification without
having to travel or fill out laborious paperwork”*

This private qualification will allow you to obtain a **Postgraduate Certificate in Use of Artificial Intelligence and Virtual Reality in Emotional Support in Nursing** endorsed by **TECH Global University**, the world's largest online university.

TECH Global University is an official European University publicly recognized by the Government of Andorra ([official bulletin](#)). Andorra is part of the European Higher Education Area (EHEA) since 2003. The EHEA is an initiative promoted by the European Union that aims to organize the international training framework and harmonize the higher education systems of the member countries of this space. The project promotes common values, the implementation of collaborative tools and strengthening its quality assurance mechanisms to enhance collaboration and mobility among students, researchers and academics.

This **TECH Global University** private qualification is a European program of continuing education and professional updating that guarantees the acquisition of competencies in its area of knowledge, providing a high curricular value to the student who completes the program.

Title: **Postgraduate Certificate in Use of Artificial Intelligence and Virtual Reality in Emotional Support in Nursing**

Modality: **online**

Duration: **6 weeks**

Accreditation: **6 ECTS**





Postgraduate Certificate

Use of Artificial Intelligence and Virtual Reality in Emotional Support in Nursing

- » Modality: online
- » Duration: 6 weeks
- » Certificate: TECH Global University
- » Accreditation: 6 ECTS
- » Schedule: at your own pace
- » Exams: online

Postgraduate Certificate

Use of Artificial Intelligence
and Virtual Reality in Emotional
Support in Nursing

