

# Postgraduate Certificate

Nursing Care in Stroke Patients  
in Acute and Chronic Phases





## Postgraduate Certificate Nursing Care in Stroke Patients in Acute and Chronic Phases

- » Modality: online
- » Duration: 6 weeks
- » Certificate: TECH Technological University
- » Dedication: 16h/week
- » Schedule: at your own pace
- » Exams: online

Website: [www.techtitute.com/in/nursing/postgraduate-certificate/nursing-care-stroke-patients-acute-chronic-phases](http://www.techtitute.com/in/nursing/postgraduate-certificate/nursing-care-stroke-patients-acute-chronic-phases)

# Index

01

Introduction

---

*p. 4*

02

Objectives

---

*p. 8*

03

Course Management

---

*p. 12*

04

Structure and Content

---

*p. 16*

05

Methodology

---

*p. 20*

06

Certificate

---

*p. 28*

01

# Introduction

The evolution in nursing procedures coupled with advances in medical technology makes it essential for professionals in internal medicine units to constantly update their knowledge in order to provide care to the patient with stroke based on the latest scientific evidence. This course facilitates the updating of the professional in a practical way, 100% online and adapted to their needs.





“

*The quality of care for patients with ICTUS is conditioned by the updating of the knowledge of the professionals who provide care. Get up to date on the procedures performed by nursing professionals before the patient in the intensive care unit"*

Internal Medicine is a medical specialty that provides comprehensive patient care on a continuous basis from the outpatient to the inpatient units, through actions of support in illness and death, protection and promotion of health, and assistance in the reincorporation of the individual to society.

This specialty has a very broad and innovative field of action. With the introduction of new technologies in the detection of pathologies, their healing and the necessary care for each process, the nursing professional is a key element in the multidisciplinary approach in each and every one of its aspects.

From the title "Management and care of patients with ICTUS in acute and chronic phases" we want to train the student in the care and management of the patient with these pathologies, and bring theoretical knowledge to practical work. This knowledge is inextricably linked to quality care, which is why professional qualification in this field is of vital importance for all health professionals working in the health system.

The program of the Postgraduate Certificate is focused on providing an update in the management and care of the patient with stroke in the acute and chronic phases, bringing theoretical knowledge closer to practical work. This knowledge is inextricably linked to quality care, which is why professional qualification in this field is of vital importance for all health professionals working in the health system.

This **Postgraduate Certificate in Nursing Care in Stroke Patients in Acute and Chronic Phases** contains the most complete and updated scientific program on the market. The most important features of the program include:

- ♦ Clinical cases presented by experts. The graphic, schematic, and eminently practical contents with which they are created, provide scientific and practical information on the disciplines that are essential for professional practice.
- ♦ Diagnostic and therapeutic innovations in treating patients with emergency respiratory pathologies
- ♦ Presentation of practical workshops on procedures, diagnosis, and treatment techniques.
- ♦ An algorithm-based interactive learning system for decision-making in the clinical situations presented throughout the course.
- ♦ Includes theoretical lectures, questions to the expert, discussion forums on controversial issues and individual reflection papers.
- ♦ Content that is accessible from any fixed or portable device with an Internet connection



*Through this course you will be able to update your knowledge in care for critical patients, improve prognosis and reduce sequelae and complications"*

“

*This Postgraduate Certificate may be the best investment you can make when choosing a refresher program for two reasons: in addition to updating your knowledge in Nursing Care in Stroke Patients in Acute and Chronic Phases you will obtain a certificate issued by TECH Technological University"*

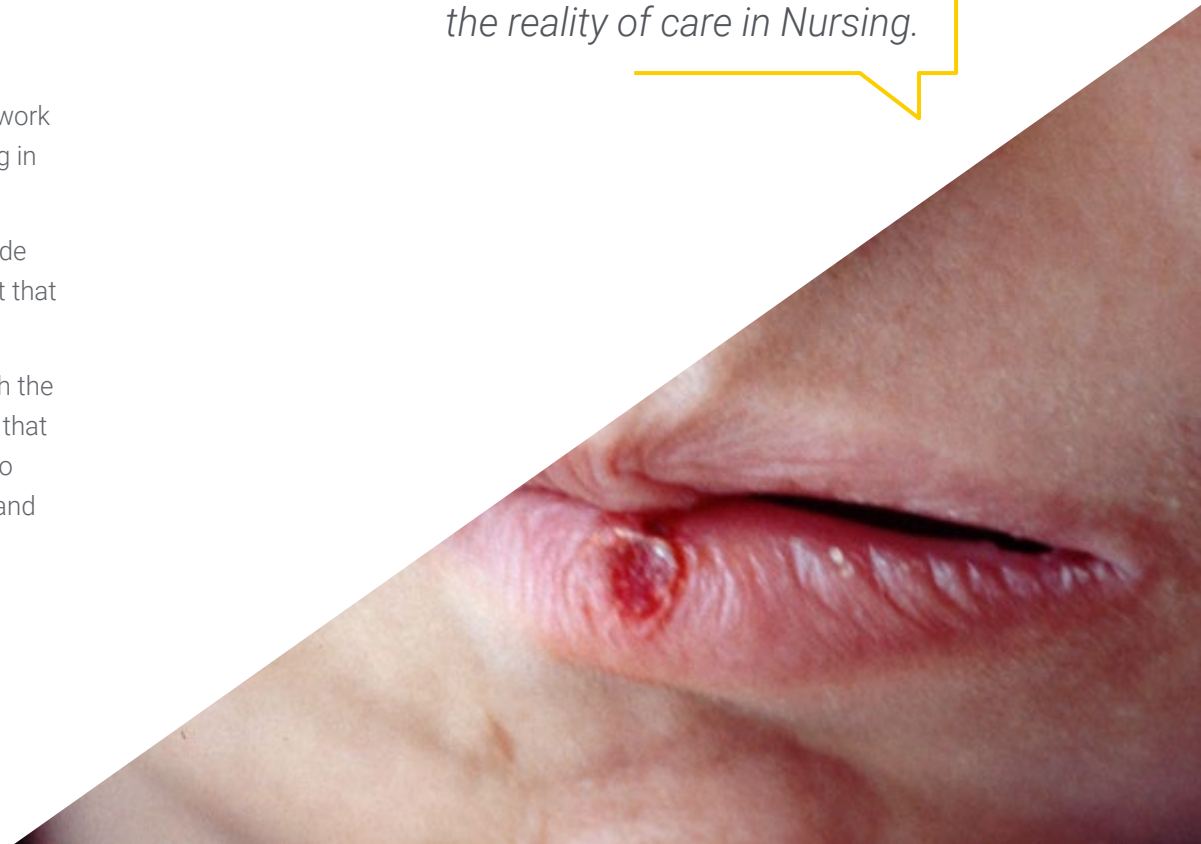
Its teaching staff includes nursing professionals of reference, who contribute their work experience to this up to date program, in addition to other professionals specializing in the hospital emergency service.

The multimedia content developed with the latest educational technology will provide the professional with situated and contextual learning, i.e., a simulated environment that will provide immersive training program to train in real situations.

The design of the program is based on Problem-Based Learning, by means of which the nursing professional must try to solve the different professional practice situations that arise throughout the program. All this is supported by an innovative interactive video system developed by recognized experts in nursing care in the emergency service and with extensive teaching experience.

*This Postgraduate Certificate offers training in simulated environments, which provides an immersive learning experience designed to train for real-life situations.*

*It includes clinical cases to bring the program's degree as close as possible to the reality of care in Nursing.*



02

# Objectives

The course is geared towards a review of the main aspects of the management of patients with ICTUS, based on scientific evidence and the experience of recognized professionals.



“

*It will give you a sense of security when taking decisions and providing care, which will help you grow both personally and professionally”*



## General Objective

---

- Update the nursing professional who perform their care functions in the internal medicine service, following the principles of nursing methodology, in order to provide quality care to patients with ICTUS in acute and chronic phases

“

*Seize the opportunity and take the step to get up to date on the most important aspects of Nursing Care in Stroke Patients in Acute and Chronic Phases”*

GEECV-SEN

A grayscale medical image, likely a CT or MRI scan of a brain, showing complex vascular structures. The image is partially obscured by a white box containing the text 'GEECV-SEN'.



## Specific Objectives

---

- ◆ Describe the Internal Medicine Service and its organization
- ◆ Acquire skills for a comprehensive patient assessment
- ◆ Proper application of nursing records in the Internal Medicine Service
- ◆ Identify expert care related to the safety of the patient.
- ◆ Identify the clinical changes in different situations
- ◆ Apply the appropriate nursing care before and after the procedures or techniques to be performed in Internal Medicine
- ◆ Recognise the necessary resource material for performing the different diagnostic and therapeutic tests
- ◆ Identify the most common health problems in chronic illnesses
- ◆ Identify which risk factors we can change and how to change them
- ◆ Define and classify the different causes of strokes. Establish the nursing care when recovering from a stroke
- ◆ Set the activation steps of the ictus code
- ◆ Use the neurological and functional neurological assessment scales

04

# Course Management

The program includes in its teaching staff nursing professionals of reference in the field of hospital emergency, who pour into this training the experience of their work. Además han participado en la creación de los contenidos otros especialistas de reconocido prestigio que completan el programa de un modo interdisciplinar.



“

*Learn about the latest advances  
in care for ICTUS patients in the  
intensive medicine unit from  
leading professionals"*

## Management



### Ródenas Giménez, María Asunción

- ♦ Diploma in Nursing Master's Degree in Nursing Sciences, University of Alicante, Spain
- ♦ Nursing Supervisor in Internal Medicine Services at Elche University General Hospital Alicante, Spain Member of the Thrombosis and Hemostasis Commission and of the clinical research team in the Internal Medicine Service of the Elche General University Hospital Alicante, Spain

## Professors

### Cantó Pastor, María Teresa

- ♦ Diploma in Nursing
- ♦ Master's Degree in Nursing Sciences, University of Alicante, Spain
- ♦ Diploma of Pedagogical Adaptation in the Faculty of Health Sciences at the University of Alicante
- ♦ Internal Medicine Nurse in Elche University General Hospital, Alicante, Spain
- ♦ University Tutor in Hospital Practice at Elche University General Hospital, Alicante, Spain

### Dr. López García, Francisco

- ♦ Degree in Medicine and Surgery
- ♦ Specialist in Internal Medicine Services at Elche University General Hospital Alicante, Spain
- ♦ Internal Medicine Resident Tutor at Orihuela Hospital Alicante, Spain
- ♦ Vocal Member of Valencian Community Society of Internal Medicine
- ♦ Secretary of the COPD Working Group of the Spanish Society of Internal Medicine, coordinator and principal investigator of the ECCO Study: "Study of Comorbidity in COPD patients hospitalized in Internal Medicine Services (ECCO Study)".
- ♦ Author of 89 indexed scientific publications and 32 chapters in books or monographs. Author and editor of 5 books published on COPD.

**Miguel Manzanera, Matilde**

- ◆ Diploma in Nursing
- ◆ Work experience in hospitalization units: Cardiology, Pneumology, Infectious Diseases and Internal Medicine of the Elche General University Hospital Alicante, Spain
- ◆ Lecturer in the Respiratory Knowledge Update (EVES), Mechanical Ventilation (EVES) and NIV Management Workshop courses
- ◆ University Tutor in Hospital Practice at Elche University General Hospital Alicante, Spain

**Dr. Mora Rufete, Antonia**

- ◆ Degree in Medicine and Surgery
- ◆ PhD in Medicine from the Faculty of Medicine from the University of Alicante
- ◆ Specialist in Internal Medicine
- ◆ Head of Department in Internal Medicine Services at Elche University General Hospital Alicante, Spain
- ◆ Postgraduate in Specialist Care of Advanced Aged Patients and Pluripathology from Autonomous University of Barcelona
- ◆ 120 publications in spanish, european and american journals (articles published in JCR indexed journals with impact factor)
- ◆ Member of FOS (Fabry Outcome Survey) group and Pluripathological and Advanced Age Patient group of the Spanish Society for Internal Medicine (SEMI).



05

# Structure and Content

The structure of the contents has been designed by a team of professionals knowledgeable about the implications of nursing training in the internal medicine service, aware of the relevance of current knowledge in order to provide quality patient care and committed to teaching through new educational technologies.







“

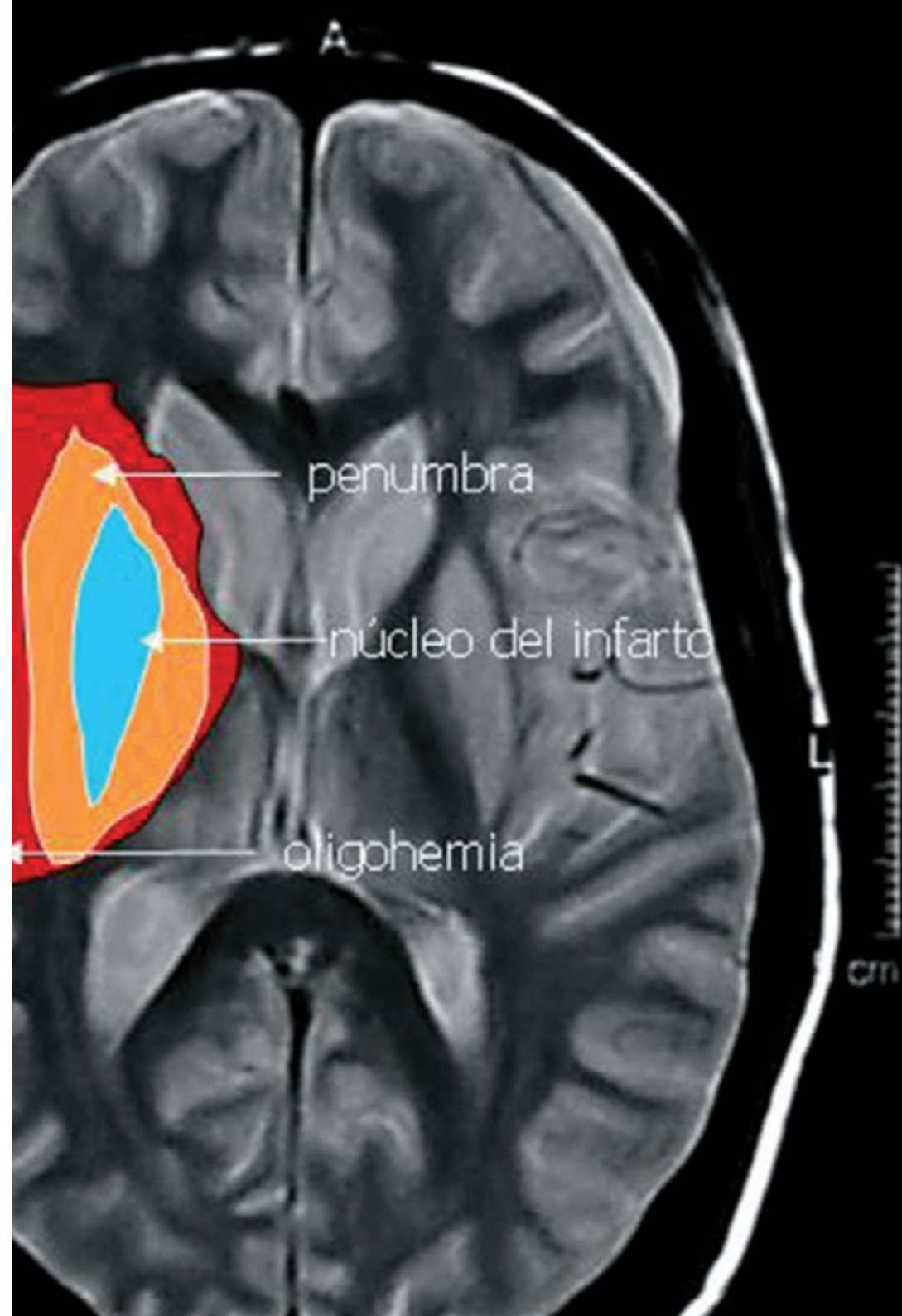
*This Postgraduate Certificate in Nursing Care in Stroke Patients in Acute and Chronic Phases contains the most complete and updated scientific program on the market”*

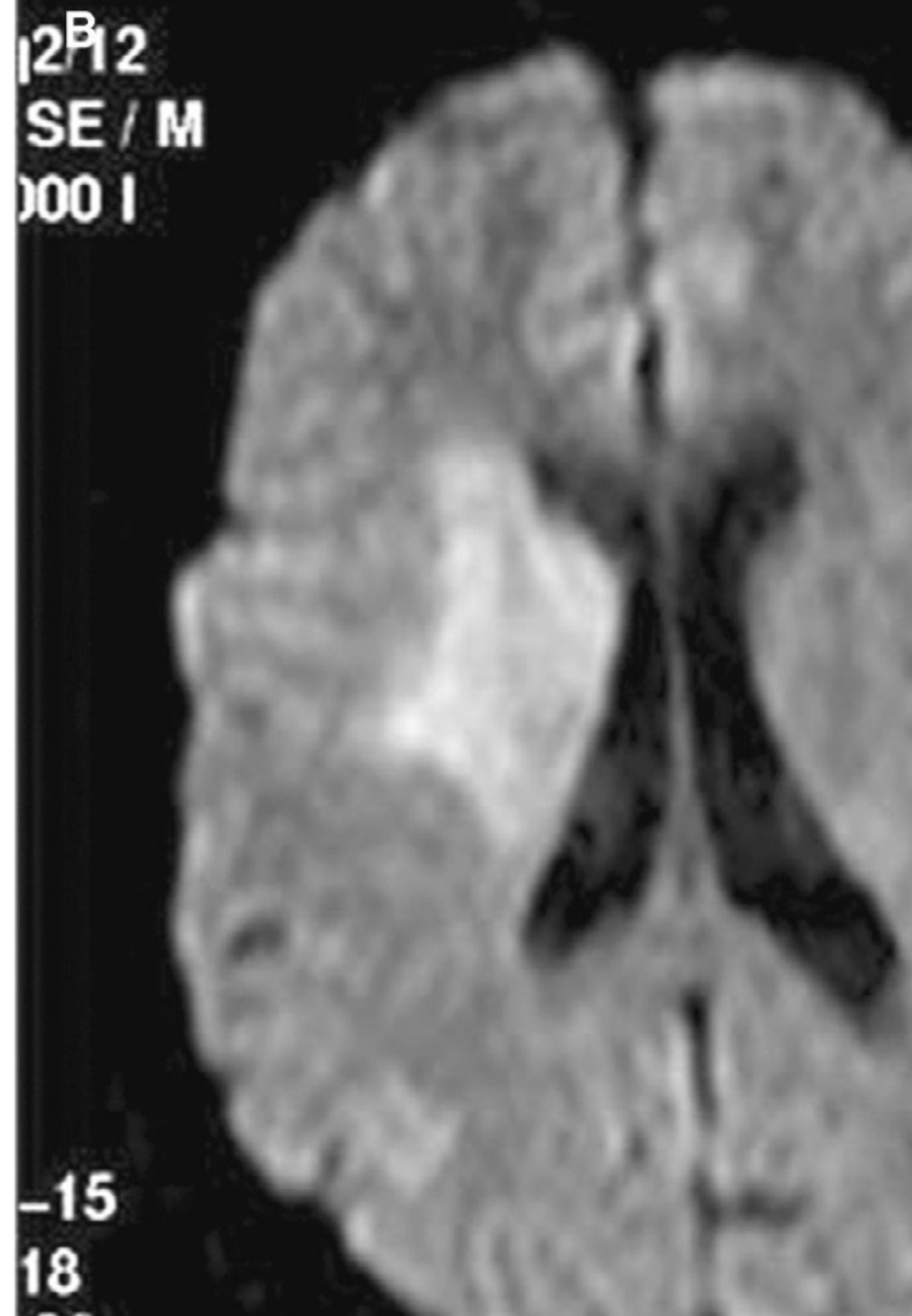
## Module 1. General Information on the Organization of Internal Medicine Services

- 1.1. Introduction
- 1.2. Care Models and Portfolio of Services
  - 1.2.1. Conventional Hospitalization
  - 1.2.2. Day Hospital
  - 1.2.3. External Consultations
  - 1.2.4. Home Hospitalization
  - 1.2.5. Portfolio of services
- 1.3. Location and Resources of Internal Medicine Services
  - 1.3.1. Location of Internal Medicine Services and Relationship with Other Services
  - 1.3.2. Structural Resources
  - 1.3.3. Human resources.
- 1.4. Procedures, Activities and Protocols
  - 1.4.1. Working Rules in the Different Structural Resources
  - 1.4.2. Patient Management: Admission, Medical History and Practice Protocols
  - 1.4.3. Clinical and Care List of Informed Consent

## Module 2. Nursing Care of a Stroke Patient in the Acute and Chronic Phases

- 2.1. Cerebrovascular Accident (CVA) or Stroke
  - 2.1.1. Pathophysiology.
  - 2.1.2. Causes
  - 2.1.3. Diagnostic tests
- 2.2. Code Stroke
  - 2.2.1. Action Protocol
  - 2.2.2. Organization of Health Care
  - 2.2.3. Thrombolysis
  - 2.2.4. Assessment Scales: Neurological and Functional





“

*A unique, key, and decisive training experience to boost your professional development”*

06

# Methodology

This training provides you with a different way of learning. Our methodology uses a cyclical learning approach: ***Re-learning***.

This teaching system is used in the most prestigious medical schools in the world, and major publications such as the ***New England Journal of Medicine*** have considered it to be one of the most effective.





“

*Discover Re-learning, a system that abandons conventional linear learning, to take you through cyclical teaching systems: a way of learning that has proven to be extremely effective, especially in subjects that require memorization"*

## At TECH Nursing School we use the Case Method

In a given clinical situation, what would you do? Throughout the program, you will be presented with multiple simulated clinical cases based on real patients, where you will have to investigate, establish hypotheses and, finally, resolve the situation. There is abundant scientific evidence on the effectiveness of the method. Nurses learn better, faster, and more sustainably over time.

*With TECH, nurses can experience a learning methodology that is shaking the foundations of traditional universities around the world.*



According to Dr. Gérvas, the clinical case is the annotated presentation of a patient, or group of patients, which becomes a "case", an example or model that illustrates some peculiar clinical component, either because of its teaching power or because of its uniqueness or rarity. It is essential that the case is based on current professional life, in an attempt to recreate the real conditions in professional nursing practice.

“

*Did you know that this method was developed in 1912 at Harvard for law students? The case method consisted of presenting students with real-life, complex situations for them to make decisions and justify their decisions on how to solve them. In 1924, Harvard adopted it as a standard teaching method”*

The effectiveness of the method is justified by four fundamental achievements:

1. Nurses who follow this method not only grasp concepts, but also develop their mental capacity by evaluating real situations and applying their knowledge.
2. The learning process has a clear focus on practical skills that allow the nursing professional to better integrate knowledge acquisition into the hospital setting or primary care.
3. Ideas and concepts are understood more efficiently, given that the example situations are based on real-life.
4. Students like to feel that the effort they put into their studies is worthwhile. This then translates into a greater interest in learning and more time dedicated to working on the university program.



## Re-learning Methodology

At TECH we enhance the Harvard case method with the best 100% online teaching methodology available: Re-learning.

Our University is the first in the world to combine the study of clinical cases with a 100% online learning system based on repetition, combining a minimum of 8 different elements in each lesson, which represent a real revolution with respect to simply studying and analyzing cases.



*The nurse will learn through real cases and by solving complex situations in simulated learning environments. These simulations are developed using state-of-the-art software to facilitate immersive learning.*



At the forefront of world teaching, the Re-learning method has managed to improve the overall satisfaction levels of professionals who complete their studies, with respect to the quality indicators of the best Spanish-speaking online university (Columbia University).

With this methodology we have trained more than 175,000 nurses with unprecedented success, in all specialties regardless of from the workload. All this in a highly demanding environment, where the students have a strong socio-economic profile and an average age of 43.5 years.

*Re-learning will allow you to learn with less effort and better performance, involving you more in your specialization, developing a critical mindset, defending arguments, and contrasting opinions: a direct equation to success.*

In our program, learning is not a linear process, but rather a spiral (we learn, unlearn, forget, and re-learn). Therefore, we combine each of these elements concentrically.

The overall score obtained by our learning system is 8.01, according to the highest international standards.



In this program you will have access to the best educational material, prepared with you in mind:



### Study Material

All teaching material is produced by the specialists who teach the course, specifically for the course, so that the teaching content is really specific and precise.

This content is then adapted in an audiovisual format that will create our way of working online, with the latest techniques that allow us to offer you high quality in all of the material that we provide you with.



### Nursing Techniques and Procedures on Video

We introduce you to the latest techniques, to the latest educational advances, to the forefront of current nursing procedures and techniques. All this, in first person, with the maximum rigor, explained and detailed for your assimilation and understanding. And best of all, you can watch them as many times as you want.



### Interactive Summaries

We present the contents attractively and dynamically in multimedia lessons that include audio, videos, images, diagrams, and concept maps in order to reinforce knowledge.

This unique multimedia content presentation training system was awarded by Microsoft as a "European Success Story".



### Additional Reading

Recent articles, consensus documents, international guides. in our virtual library you will have access to everything you need to complete your training.





**Expert-Led Case Studies and Case Analysis**

Effective learning ought to be contextual. Therefore, we will present you with real case developments in which the expert will guide you through focusing on and solving the different situations: a clear and direct way to achieve the highest degree of understanding.



**Testing & Retesting**

We periodically evaluate and re-evaluate your knowledge throughout the program, through assessment and self-assessment activities and exercises: so that you can see how you are achieving your goals.



**Classes**

There is scientific evidence suggesting that observing third-party experts can be useful.

Learning from an expert strengthens knowledge and memory, and generates confidence in our future difficult decisions.



**Quick Action Guides**

We offer you the most relevant contents of the course in the form of worksheets or quick action guides. A synthetic, practical, and effective way to help you progress in your learning.



06

# Certificate

The Postgraduate Certificate in Nursing Care in Stroke Patients in Acute and Chronic Phases guarantees you, in addition to the most rigorous and updated training, access to a certificate issued by TECH Technological University.



“

*Successfully complete  
this training and receive  
your university degree  
without travel or  
laborious paperwork"*

This **Postgraduate Certificate in Nursing Care in Stroke Patients in Acute and Chronic Phases** contains the most complete and updated scientific program on the market.

After students have passed the assessments, they will receive their **Postgraduate Certificate** issued by **TECH Technological University**.

The certificate issued by **TECH Technological University** will reflect the qualification obtained in the program, and meets the requirements commonly demanded by labor exchanges, competitive examinations, and professional career evaluation committees.

Title: **Postgraduate Certificate in Nursing Management and Care in Stroke Patients in Acute and Chronic Phases**

No. Teaching Hours: **100**



\*Apostille Convention. In the event that the student wishes to have their paper certificate Apostilled, TECH EDUCATION will make the necessary arrangements to obtain it at an additional cost of €140 plus shipping costs of the Apostilled certificate.

future  
health confidence people  
education information tutors  
guarantee accreditation teaching  
institutions technology learning  
community commitment  
personalized service innovation  
knowledge present quality  
development languages  
classroom



## Postgraduate Certificate Nursing Care in Stroke Patients in Acute and Chronic Phases

- » Modality: online
- » Duration: 6 weeks
- » Certificate: TECH Technological University
- » Dedication: 16h/week
- » Schedule: at your own pace
- » Exams: online

# Postgraduate Certificate

Nursing Care in Stroke Patients  
in Acute and Chronic Phases

