

Postgraduate Certificate Nursing in Heart Failure





Postgraduate Certificate Nursing in Heart Failure

- » Modality: online
- » Duration: 6 weeks
- » Certificate: TECH Technological University
- » Dedication: 16h/week
- » Schedule: at your own pace
- » Exams: online

Website: www.techtitute.com/pk/nursing/postgraduate-certificate/nursing-heart-failure

Index

01

Introduction

p. 4

02

Objectives

p. 8

03

Course Management

p. 12

04

Structure and Content

p. 16

05

Methodology

p. 20

06

Certificate

p. 28

01

Introduction

The figures for patients with heart failure are not at all flattering, especially in people over 75 years of age, in whom between 10 and 12% suffer from heart failure. Moreover, life expectancy after suffering HF is 5 years in the 50% who suffer it. Faced with this situation, nursing professionals face the challenge of providing the population with specific and adequate information on treatments and healthy lifestyles. This program responds to this need by means of innovative multimedia content and a specialized teaching team with extensive experience in cardiology.



“

Thanks to this program, you will have the renewal of knowledge you were looking for in patients with cardiac problems"

Reducing mortality in patients who have suffered heart failure, minimizing symptoms and improving the quality of life of these patients are the main objectives of healthcare professionals, including nurses. This is a challenge that will be explored in depth in this Diploma, which will delve into the strategies of pharmacological and non-pharmacological treatment, nursing care and its role in Intensive Care Units.

A 100% online program, which has a teaching staff with extensive experience in cardiology in reference hospitals, will allow the nursing professional to update their knowledge about the care they must provide to patients who have suffered heart failure. Through video summaries, detailed videos and specialized readings, the students of this program will learn in depth about the care of patients with ventricular assistance, cardiac transplantation and day-to-day life in the Intensive Care Unit and new consultations.

In addition, this qualification provides simulations of real clinical cases that will put the nursing professional in a situation. A didactic resource of great practical utility, which will allow progress in the renewal of knowledge.

All this with a flexible program, which gives the nursing professional the opportunity to connect from any electronic device with internet connection to the syllabus available from the beginning of the program. In this way, without the need for attendance or fixed timetable sessions, students taking this qualification will have the option of distributing the teaching load according to their needs. Likewise, the Relearning system, based on the reiteration of content, will allow you to reduce the long hours of study that are more frequent in other teaching models. An ideal educational option to renew your knowledge in a more agile and simple way.

This **Postgraduate Certificate in Nursing in Heart Failure** contains the most complete and up-to-date scientific program on the market. The most important features include:

- ♦ The development of practical cases presented by experts in Nursing
- ♦ The graphic, schematic, and practical contents with which they are created, provide scientific and practical information on the disciplines that are essential for professional practice
- ♦ Practical exercises where self-assessment can be used to improve learning
- ♦ Its special emphasis on innovative methodologies
- ♦ Theoretical lessons, questions to the expert, debate forums on controversial topics, and individual reflection assignments
- ♦ Content that is accessible from any fixed or portable device with an Internet connection



An ideal educational option for professionals who wish to combine their work responsibilities with quality teaching"

“

This Postgraduate Certificate gives you the opportunity to deepen your knowledge of the advances in mechanical circulatory assistance and cardiac transplantation”

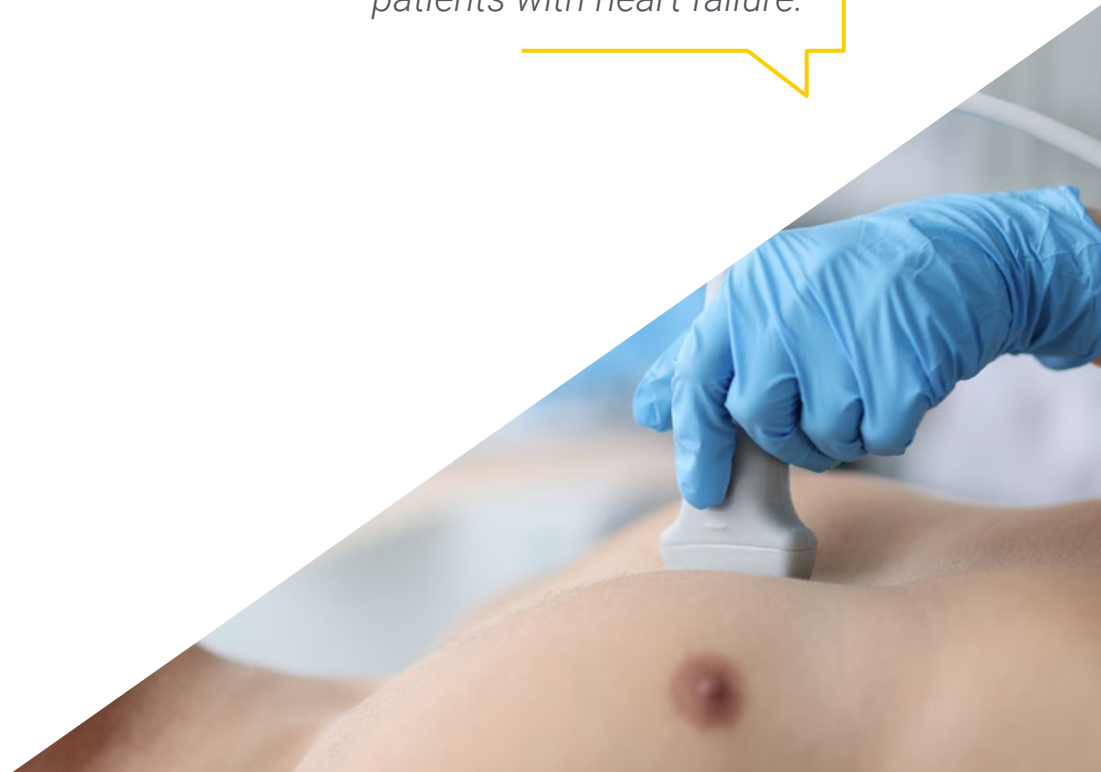
The program’s teaching staff includes professionals from the sector who contribute their work experience to this educational program, as well as renowned specialists from leading societies and prestigious universities.

The multimedia content, developed with the latest educational technology, will provide the professional with situated and contextual learning, i.e., a simulated environment that will provide immersive education programmed to learn in real situations.

The design of this program focuses on Problem-Based Learning, through which the professional must try to solve the different professional practice situations that arise throughout the program. For this purpose, the student will be assisted by an innovative interactive video system created by renowned and experienced experts.

A university program that will allow you to get up to date in geriatric heart failure and palliative care.

The clinical cases provided by the specialized team will bring you even closer to the reality of caring for patients with heart failure.



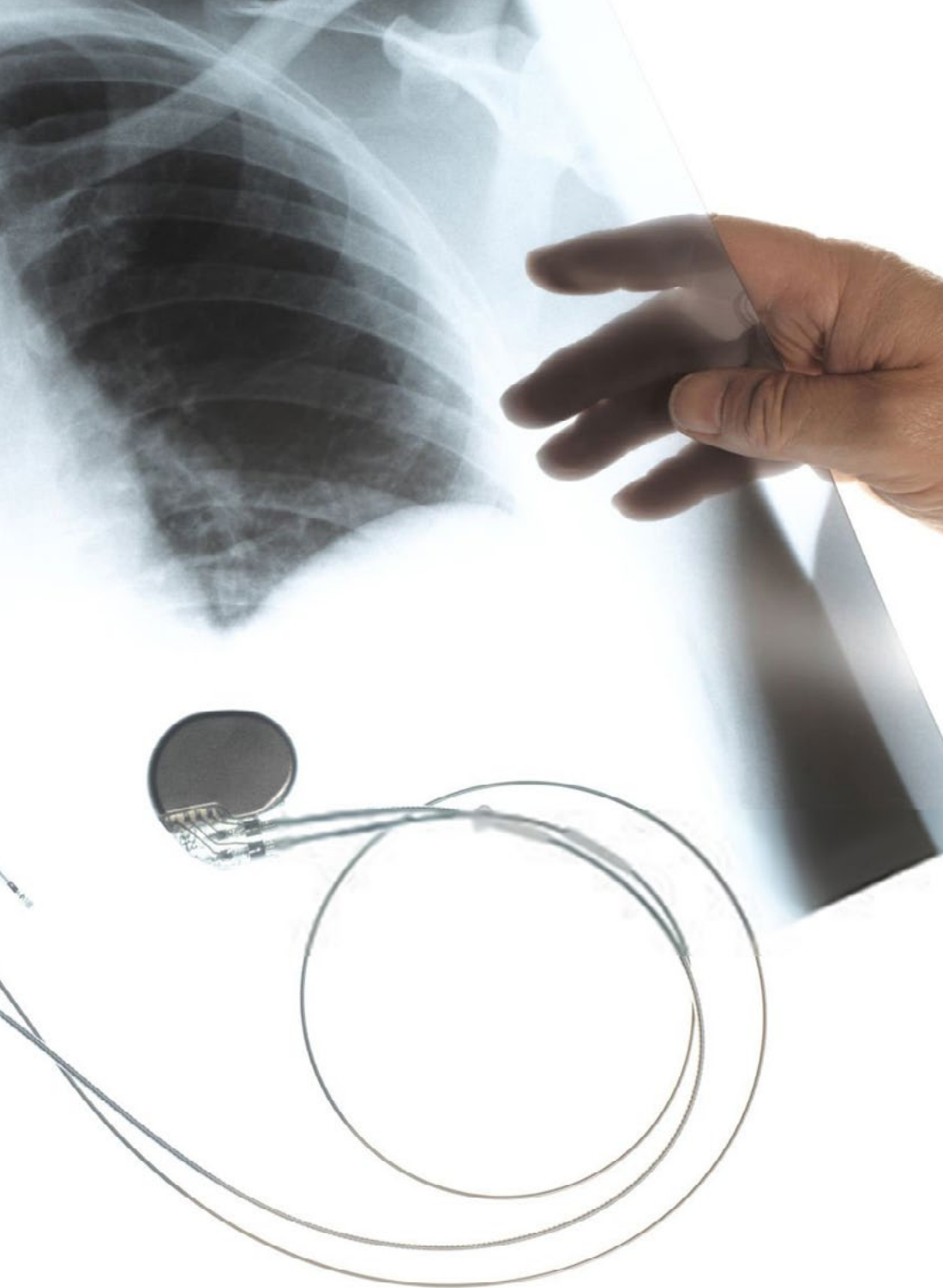
02 Objectives

At the end of the six-week course, the nursing professional will have acquired updated knowledge thanks to the content provided by the team of experts who teach this qualification. This will allow you to be aware of the skills required for conducting a clinical examination, advances in treatments for patients with heart failure, as well as the appropriate information to be transferred to the patient to lead a correct lifestyle.



“

The Relearning system of this qualification will allow you to reduce the long hours of study”



Specific Objectives

- ◆ Acquire competence in performing a clinical examination and evaluating treatment effects
- ◆ Provide the student with a comprehensive knowledge of HF, its causes, natural history, prevention, diagnosis and treatments based on scientific evidence, including pharmacological and non-pharmacological therapies; devices and surgery, with special emphasis on drug titration
- ◆ Acquire skills in assessing educational and psychosocial needs and providing patient education and psychosocial support

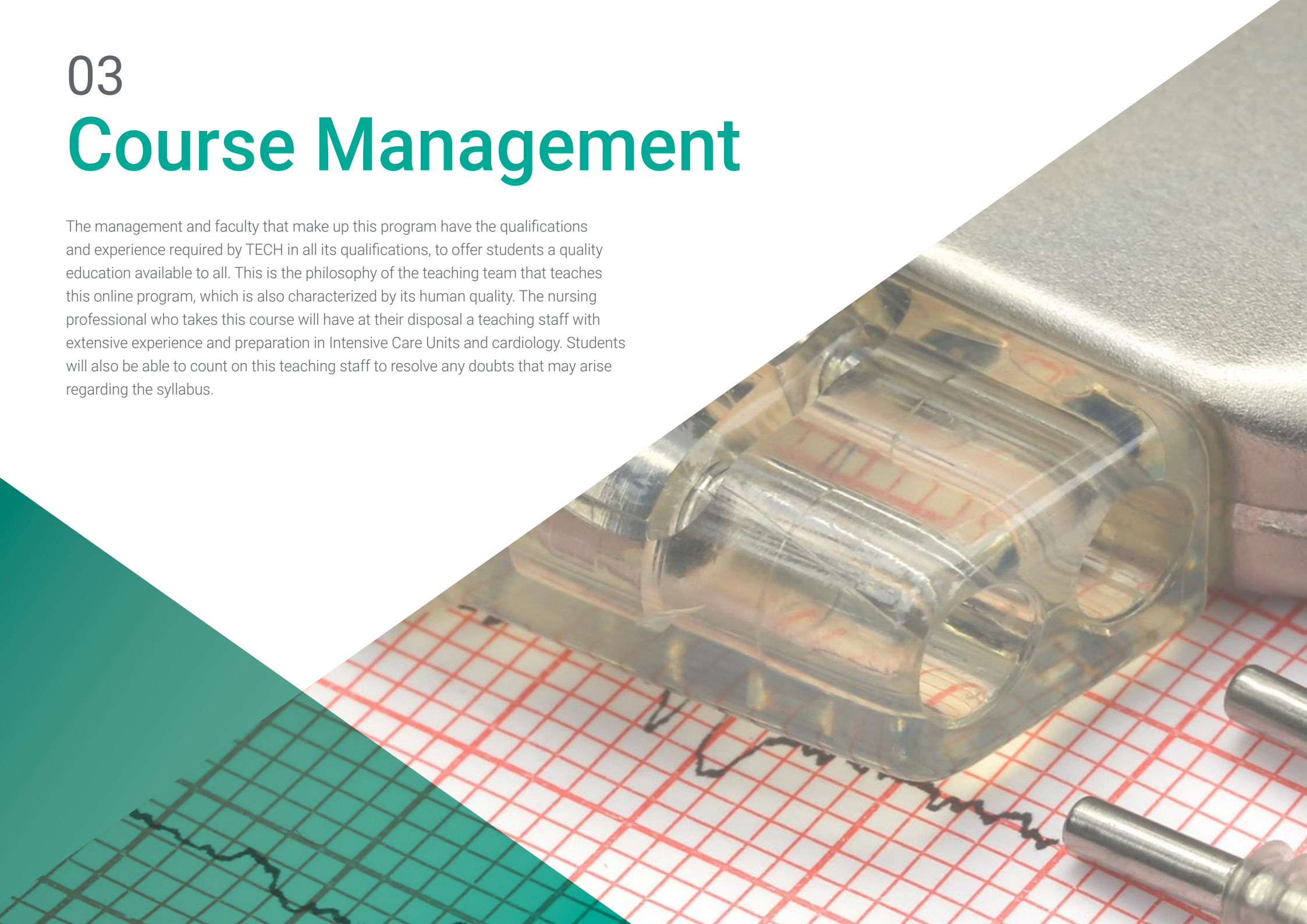


This program provides an in-depth look at the latest scientific evidence in the application of treatments for transplant patients"

03

Course Management

The management and faculty that make up this program have the qualifications and experience required by TECH in all its qualifications, to offer students a quality education available to all. This is the philosophy of the teaching team that teaches this online program, which is also characterized by its human quality. The nursing professional who takes this course will have at their disposal a teaching staff with extensive experience and preparation in Intensive Care Units and cardiology. Students will also be able to count on this teaching staff to resolve any doubts that may arise regarding the syllabus.



A close-up photograph of a metallic, cylindrical component, possibly a part of a machine or engine, resting on a red grid background. The component has a smooth, reflective surface and a slightly flared end. The background is a white grid with red lines, typical of a technical drawing or a precision workspace. The image is partially obscured by a diagonal split in the page design.

“

A teaching team with extensive professional experience will be in charge of transmitting all their experience in this program"

Management



Ms. Capote Toledo, María Luz

- ♦ Coordinator of the Hemodynamics and Arrhythmia Room at the Hospital Príncipe de Asturias and Hospital Severo Ochoa, in Madrid
- ♦ Supervisor of Heart Failure, Cardiac Rehabilitation, Cardiopulmonary Explorations (Imaging, Ergometry and Holter) and High-Resolution Cardiology Consultations at Clinical Hospital San Carlos in Madrid
- ♦ Supervisor of Hemodynamics and Electrophysiology at San Carlos Clinical Hospital, in Madrid
- ♦ Graduate in Nursing at the Complutense University of Madrid
- ♦ Master 's Degree in Health Care Quality, Rey Juan Carlos University in Madrid in collaboration with the Laín Entralgo Agency



Professors

Ms. López Yaguez, María

- ◆ Intensive Care Nurse
- ◆ Nurse in Intensive Care Unit at Clinical Hospital San Carlos in Madrid
- ◆ Post-operative education nurse for patients undergoing cardiac surgery in Hospital Clínico Universitario San Carlos
- ◆ Nurse in Heart Failure Unit
- ◆ Nurse collaborator of practical teaching
- ◆ Diploma in Nursing from the Complutense University of Madrid
- ◆ Expert in Heart Failure for Nursing at the Universidad Francisco de Vitoria UFV in Madrid
- ◆ Refresher course and multidisciplinary management in HF by the Commission of continuing education of the health professions of the community of Madrid
- ◆ Course in Cardiorespiratory Nursing by Alfonso X El Sabio University in Madrid

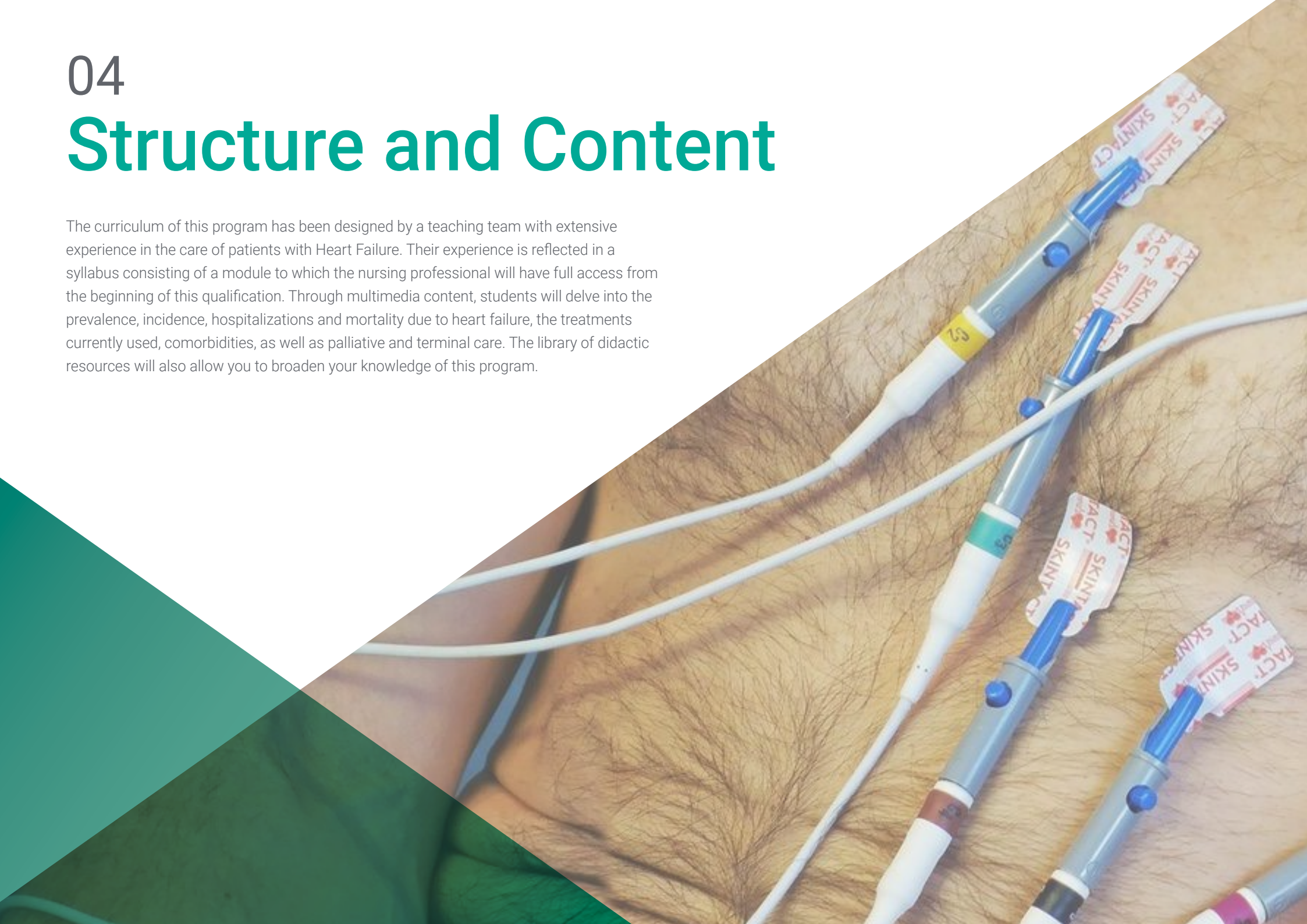
“

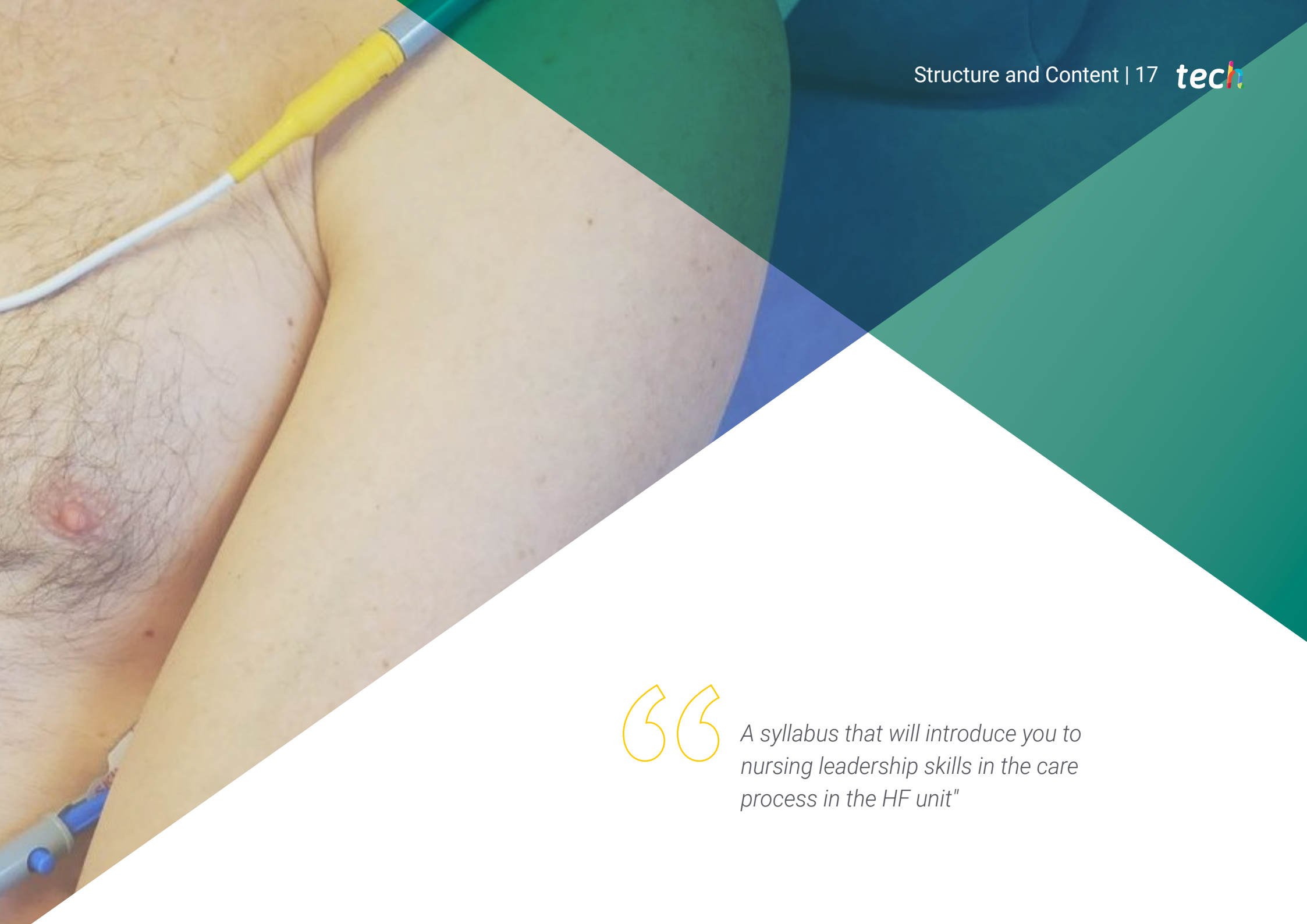
A unique, key, and decisive educational experience to boost your professional development”

04

Structure and Content

The curriculum of this program has been designed by a teaching team with extensive experience in the care of patients with Heart Failure. Their experience is reflected in a syllabus consisting of a module to which the nursing professional will have full access from the beginning of this qualification. Through multimedia content, students will delve into the prevalence, incidence, hospitalizations and mortality due to heart failure, the treatments currently used, comorbidities, as well as palliative and terminal care. The library of didactic resources will also allow you to broaden your knowledge of this program.





“

A syllabus that will introduce you to nursing leadership skills in the care process in the HF unit"

Module 1. Heart Failure

- 1.1. General Epidemiology of Heart Failure
 - 1.1.1. Prevalence, Incidence, Hospitalizations and Mortality Due to Heart Failure
 - 1.1.2. Demographic and Clinical Characteristics
- 1.2. Heart Failure Pathophysiology
 - 1.2.1. Pathophysiological Mechanisms: Residual Congestion
 - 1.2.2. Etiology
 - 1.2.3. Classification of Heart Failure
 - 1.2.4. Clinical Manifestations
 - 1.2.5. Prognosis and Risk Stratification
- 1.3. Diagnosis of Heart Failure
 - 1.3.1. Diagnostic Elements: Imaging Techniques
 - 1.3.2. Biomarkers in the Diagnosis and Prognosis of HF
 - 1.3.3. Clinical Assessment of the Hemodynamic Profile
 - 1.3.4. Hemodynamics, Coronary Angiography and Endomyocardial Biopsy
 - 1.3.5. Genetic Study of Patients with HF: Familial Cardiomyopathies
- 1.4. HF Treatment
 - 1.4.1. Non-Pharmacological Treatment Cardiovascular Education. The Role of the Nurse
 - 1.4.2. Medical Treatment of Chronic HF
 - 1.4.3. Medical Treatment of Acute HF
 - 1.4.4. Treatment of HF with Preserved EF
- 1.5. Most Relevant Comorbidities in HF
 - 1.5.1. Metabolic Cardiomyopathies: HF and Diabetes
 - 1.5.2. Cardiorenal Syndrome: Anemia and HF
 - 1.5.3. COPD
 - 1.5.4. HF in Elderly Patients
 - 1.5.5. Congenital Heart Disease in Adults: HF of Valvular Origin
 - 1.5.6. Assessment of Frailty in Patients with HF
- 1.6. Implantable Devices
 - 1.6.1. Cardiac Arrhythmias and their Treatment for Patients with Heart Failure: Ablation Techniques in HF
 - 1.6.2. Incidence of ICD and Cardiac Resynchronization Therapy in HF
 - 1.6.3. Nursing Care of Patients with Devices
 - 1.6.4. Operation, Alarms and Monitoring of the HF Patient
 - 1.6.5. Remote Monitoring of the HF Patient with these Types of Devices





- 1.7. Advanced HF: Mechanical Circulatory Assistance and Cardiac Transplantation
 - 1.7.1. Ventricular Assist Device: Implantation Types, Techniques and Short-Term Complications
 - 1.7.2. Nursing Care for Patients with a Ventricular Assist Device
 - 1.7.3. Complications of Ventricular Assist Devices
 - 1.7.4. Ventricular Remodeling Surgery and Revascularization in HF
 - 1.7.5. Cardiac Transplantation
- 1.8. Palliative and Terminal Care
 - 1.8.1. Refractory HF: Pharmacological and Non-Pharmacological Treatment
 - 1.8.2. Palliative Care. Identification of the Terminal Patient
 - 1.8.3. Ethical Conflicts or Dilemmas in the Care of the Terminally Ill Patient
 - 1.8.4. Coordination between Levels of Care and with the Patient and Family for Palliative Care: Withdrawal of Life Support
- 1.9. The Day Hospital within the HF Unit and New Consultations
 - 1.9.1. Cardio-oncology
 - 1.9.2. Inherited Heart Disease
 - 1.9.3. Pulmonary Hypertension in HF
 - 1.9.4. Cardiorenal
 - 1.9.5. Cardiac Rehabilitation
 - 1.9.6. Sexology
- 1.10. The HF Unit Nurse as the Leader of the Entire Care Process
 - 1.10.1. Organization of the Nurse's Consultation: Taking the Clinical History and Patient Assessment
 - 1.10.2. Education and Communication: Conflict Resolution with Patients and Family
 - 1.10.3. Drug Titration: Starting and Target Doses of Each Drug. Problems in Each One of Them and Solutions to Follow
 - 1.10.4. Geriatric Heart Failure, Palliative Care, Coordination and Continuity of Care, Telemedicine and Telemonitoring
 - 1.10.5. Nurse Case Manager
 - 1.10.6. Care Process Management

05

Methodology

This academic program offers students a different way of learning. Our methodology uses a cyclical learning approach: **Relearning.**

This teaching system is used, for example, in the most prestigious medical schools in the world, and major publications such as the **New England Journal of Medicine** have considered it to be one of the most effective.





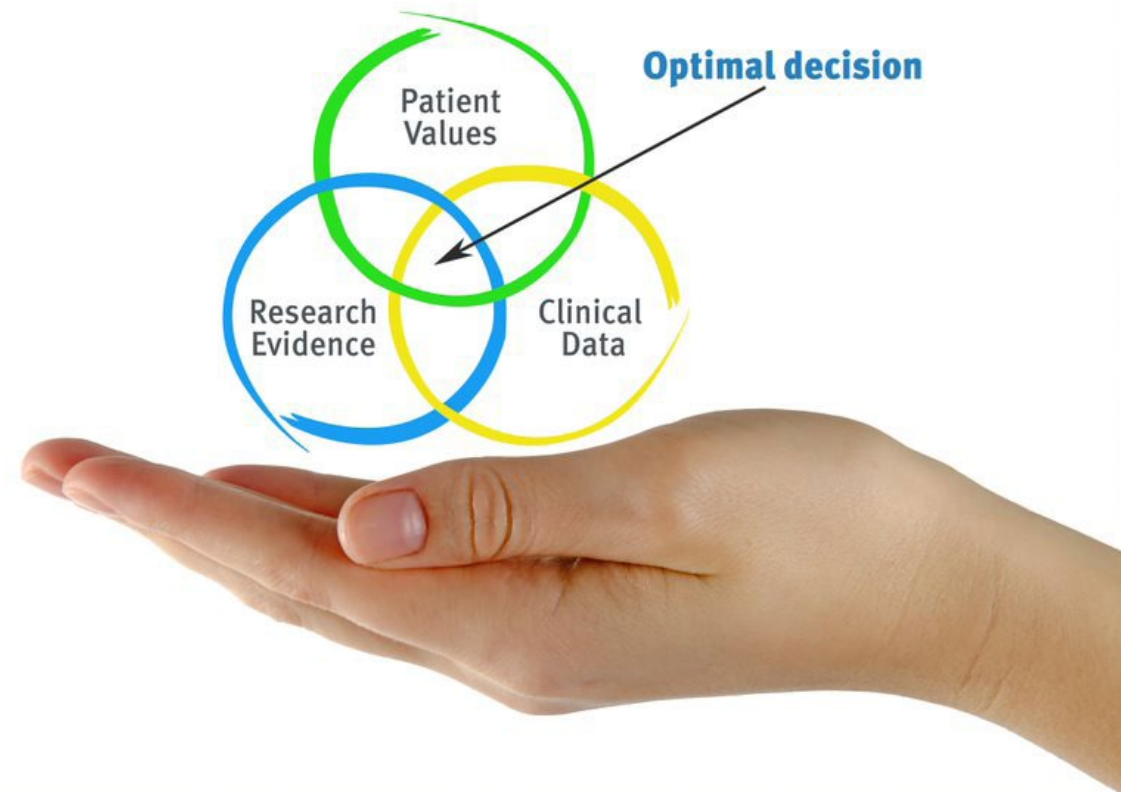
“

Discover Relearning, a system that abandons conventional linear learning, to take you through cyclical teaching systems: a way of learning that has proven to be extremely effective, especially in subjects that require memorization"

At TECH Nursing School we use the Case Method

In a given situation, what should a professional do? Throughout the program, students will face multiple simulated clinical cases, based on real patients, in which they will have to do research, establish hypotheses, and ultimately resolve the situation. There is an abundance of scientific evidence on the effectiveness of the method. Nurses learn better, faster, and more sustainably over time.

With TECH, nurses can experience a learning methodology that is shaking the foundations of traditional universities around the world.



According to Dr. Gérvas, the clinical case is the annotated presentation of a patient, or group of patients, which becomes a "case", an example or model that illustrates some peculiar clinical component, either because of its teaching power or because of its uniqueness or rarity. It is essential that the case is based on current professional life, in an attempt to recreate the real conditions in professional nursing practice.

“

Did you know that this method was developed in 1912, at Harvard, for law students? The case method consisted of presenting students with real-life, complex situations for them to make decisions and justify their decisions on how to solve them. In 1924, Harvard adopted it as a standard teaching method”

The effectiveness of the method is justified by four fundamental achievements:

1. Nurses who follow this method not only grasp concepts, but also develop their mental capacity, by evaluating real situations and applying their knowledge.
2. The learning process has a clear focus on practical skills that allow the nursing professional to better integrate knowledge acquisition into the hospital setting or primary care.
3. Ideas and concepts are understood more efficiently, given that the example situations are based on real-life.
4. Students like to feel that the effort they put into their studies is worthwhile. This then translates into a greater interest in learning and more time dedicated to working on the course.



Relearning Methodology

At TECH we enhance the case method with the best 100% online teaching methodology available: Relearning.

This university is the first in the world to combine case studies with a 100% online learning system based on repetition combining a minimum of 8 different elements in each lesson, which is a real revolution compared to the simple study and analysis of cases.



The nurse will learn through real cases and by solving complex situations in simulated learning environments. These simulations are developed using state-of-the-art software to facilitate immersive learning.

At the forefront of world teaching, the Relearning method has managed to improve the overall satisfaction levels of professionals who complete their studies, with respect to the quality indicators of the best online university (Columbia University).

With this methodology we have trained more than 175,000 nurses with unprecedented success in all specialities regardless of practical workload. Our pedagogical methodology is developed in a highly competitive environment, with a university student body with a strong socioeconomic profile and an average age of 43.5 years old.

Relearning will allow you to learn with less effort and better performance, involving you more in your specialization, developing a critical mindset, defending arguments, and contrasting opinions: a direct equation to success.

In our program, learning is not a linear process, but rather a spiral (learn, unlearn, forget, and re-learn). Therefore, we combine each of these elements concentrically.

The overall score obtained by TECH's learning system is 8.01, according to the highest international standards.



This program offers the best educational material, prepared with professionals in mind:



Study Material

All teaching material is produced by the specialists who teach the course, specifically for the course, so that the teaching content is really specific and precise.

These contents are then applied to the audiovisual format, to create the TECH online working method. All this, with the latest techniques that offer high quality pieces in each and every one of the materials that are made available to the student.



Nursing Techniques and Procedures on Video

We introduce you to the latest techniques, to the latest educational advances, to the forefront of current medical techniques. All of this in direct contact with students and explained in detail so as to aid their assimilation and understanding. And best of all, you can watch them as many times as you want.



Interactive Summaries

The TECH team presents the contents attractively and dynamically in multimedia lessons that include audio, videos, images, diagrams, and concept maps in order to reinforce knowledge.

This exclusive educational system for presenting multimedia content was awarded by Microsoft as a "European Success Story".



Additional Reading

Recent articles, consensus documents and international guidelines, among others. In TECH's virtual library, students will have access to everything they need to complete their course.





Expert-Led Case Studies and Case Analysis

Effective learning ought to be contextual. Therefore, TECH presents real cases in which the expert will guide students, focusing on and solving the different situations: a clear and direct way to achieve the highest degree of understanding.



Testing & Retesting

We periodically evaluate and re-evaluate students' knowledge throughout the program, through assessment and self-assessment activities and exercises, so that they can see how they are achieving their goals.



Classes

There is scientific evidence suggesting that observing third-party experts can be useful.

Learning from an Expert strengthens knowledge and memory, and generates confidence in future difficult decisions.



Quick Action Guides

TECH offers the most relevant contents of the course in the form of worksheets or quick action guides. A synthetic, practical, and effective way to help students progress in their learning.



06 Certificate

The Postgraduate Certificate in Nursing in Heart Failure guarantees students, in addition to the most rigorous and up-to-date education, access to a Postgraduate Certificate issued by TECH Technological University.





“

Successfully complete this program and receive your university qualification without having to travel or fill out laborious paperwork”

This **Postgraduate Certificate in Nursing in Heart Failure** contains the most complete and up-to-date scientific program on the market.

After the student has passed the assessments, they will receive their corresponding **Postgraduate Certificate** issued by **TECH Technological University** via tracked delivery*.

The certificate issued by **TECH Technological University** will reflect the qualification obtained in the Postgraduate Certificate, and meets the requirements commonly demanded by labor exchanges, competitive examinations, and professional career evaluation committees.

Title: **Postgraduate Certificate in Nursing in Heart Failure**

Official N° of hours: **150 h.**



*Apostille Convention. In the event that the student wishes to have their paper certificate issued with an apostille, TECH EDUCATION will make the necessary arrangements to obtain it, at an additional cost.

future
health confidence people
education information tutors
guarantee accreditation teaching
institutions technology learning
community commitment
personalized service innovation
knowledge present
development language
virtual classroom



Postgraduate Certificate Nursing in Heart Failure

- » Modality: online
- » Duration: 6 weeks
- » Certificate: TECH Technological University
- » Dedication: 16h/week
- » Schedule: at your own pace
- » Exams: online

Postgraduate Certificate Nursing in Heart Failure