

Hybrid Master's Degree

Gynecological Care for Midwives





Hybrid Master's Degree

Gynecological Care for Midwives

Modality: Hybrid (Online + Clinical Internship)

Duration: 12 months

Certificate: TECH Global University

60 + 5 ECTS Credits

Website: www.techtute.com/us/nursing/hybrid-master-degree/hybrid-master-degree-gynecological-care-midwives

Index

01

Introduction

p. 4

02

Why Study this Hybrid
Master's Degree?

p. 8

03

Objectives

p. 12

04

Competencies

p. 18

05

Course Management

p. 22

06

Educational Plan

p. 30

07

Clinical Internship

p. 38

08

Where Can I Do the Clinical
Internship?

p. 44

09

Methodology

p. 50

10

Certificate

p. 58

01

Introduction

Women who come to gynecology services expect to be attended by highly qualified professionals who are able to identify, from the very beginning, the possible pathologies they are suffering from. However, for this to be feasible, nurses need to obtain superior training at both the theoretical and practical levels. For this reason, TECH has designed this high quality academic program, where the professional will be able to deepen in the most relevant aspects of Gynecological Care for Midwives, from an innovative perspective and with the possibility of carrying out a Practical Training in a reference hospital center, together with the most renowned experts.





“

TECH innovates every day in the teaching field and, therefore, now offers you this program that perfectly combines online theory with classroom practice”

Gynecological care requires a high level of training for all those involved in the diagnosis and treatment of pathologies related to this field of action. For this reason, constant up to date must be an obligation for all professionals, since, thanks to technological advances, there are constant new developments in the tools and techniques that can be used in this field. Hence the importance for midwives to be up to date and, therefore, be able to offer a better and more personalized care to patients.

The professionals in Nursing of gynecological care to know in depth the intimate anatomy of women and the pathologies that may affect them, in order to act with greater safety in their interventions. Therefore, they will be able to act more safely in their daily practice, which means greater efficiency in service.

This Hybrid Master's Degree meets the criteria of scientific rigor and the highest level to meet the health needs of women. Therefore, it offers midwives the opportunity not only to increase their knowledge with the latest information on the subject, through a very complete theoretical syllabus that is accompanied by multiple practical exercises that will improve their understanding of it, but also to train with professionals with extensive experience in a relevant hospital in the Spanish territory, attending real patients.

The content of this program is focused on the detailed up to date of nurses working in Gynecology units, whose functions require high levels of qualification. Only with an adequate, focused and specialized refresher program can the necessary knowledge and skills be acquired and maintained to respond to the needs of the women who come to these clinics.

This degree will allow you not only to up to date your knowledge with the theory validated by a large team of expert teachers, but also to work with patients in a real hospital setting and with state-of-the-art resources, which will develop your maximum potential and growth in the area of Gynecology. Undoubtedly, it will be a before and after in his professional career.

This **Hybrid Master's Degree in Gynecological Care for Midwives** contains the most complete and up-to-date scientific program on the market. Its most notable features are:

- ◆ Development of more than 100 clinical cases presented by nursing professionals with expertise in gynecology and university professors with extensive experience
- ◆ The graphic, schematic, and practical contents with which they are created, provide scientific and practical information on the disciplines that are essential for professional practice
- ◆ Comprehensive systematized action plans for the main pathologies in the intensive Gynecology Care. in the intensive care unit
- ◆ Presentation of practical workshops on procedures, diagnosis, and treatment techniques in of gynecology patients
- ◆ An algorithm-based interactive learning system for decision-making in the clinical situations presented throughout the course
- ◆ Practical clinical guides on approaching different pathologies
- ◆ Special emphasis on testbased medicine and research methodologies in Gynecological Care
- ◆ All of this will be complemented by theoretical lessons, questions to the expert, debate forums on controversial topics, and individual reflection assignments
- ◆ Content that is accessible from any fixed or portable device with an Internet connection
- ◆ Furthermore, you will be able to carry out a clinical internship in one of the best hospital centers



The teaching materials of this program, elaborated by these specialists, have contents that are completely applicable to your professional experiences”

“

Take an intensive 3-week internship in a prestigious center and acquire all the knowledge to grow personally and professionally”

In this proposal for a Hybrid Master's Degree, of a professionalizing nature and hybrid learning modality, the program is aimed at up to date nursing professionals who perform their functions in gynecology units, and who require a high level of qualification. The contents are based on the latest scientific evidence and oriented in a didactic way to integrate theoretical knowledge in nursing practice, and the theoretical-practical elements will facilitate the updating of knowledge and will allow decision making in patient management.

Thanks to the multimedia content, developed with the latest educational technology, nursing professionals will benefit from situated and contextual learning, i.e., a simulated environment that will provide immersive learning programmed to train in real situations. This program is designed around Problem-Based Learning, whereby the professional must try to solve the different professional practice situations that arise throughout the program. For this purpose, the students will be assisted by an innovative interactive video system created by renowned and experienced experts.

This Hybrid Master's Degree allows you to exercise in simulated environments, which provide immersive learning programmed to train in real situations.

Experience this unique opportunity to specialize in Gynecological Care and offer a more personalized treatment to patients.



02

Why Study this Hybrid Master's Degree?

Pregnancy monitoring, health education and promotion of healthy behaviors are some of the functions of the midwife whose task is based on counseling and health education, not only for the woman, but also for her environment. Keeping up to date in this regard is a challenge, but TECH, with excellence in education in mind, has developed this program that will allow the nursing professional to dedicate the right amount of time to keep up to date with the advances in Gynecological Care. With a 100% online modality you will be able to enjoy the theoretical teaching based on the most avant-garde methodology: Relearning, then to finish you will live a face-to-face stay in one of the hospital centers of your preference among a list of the best in different locations.



“

Get the most complete and up to date information on Gynecological Care to provide the best service to your patients"

1. Updating from the Latest Technology Available

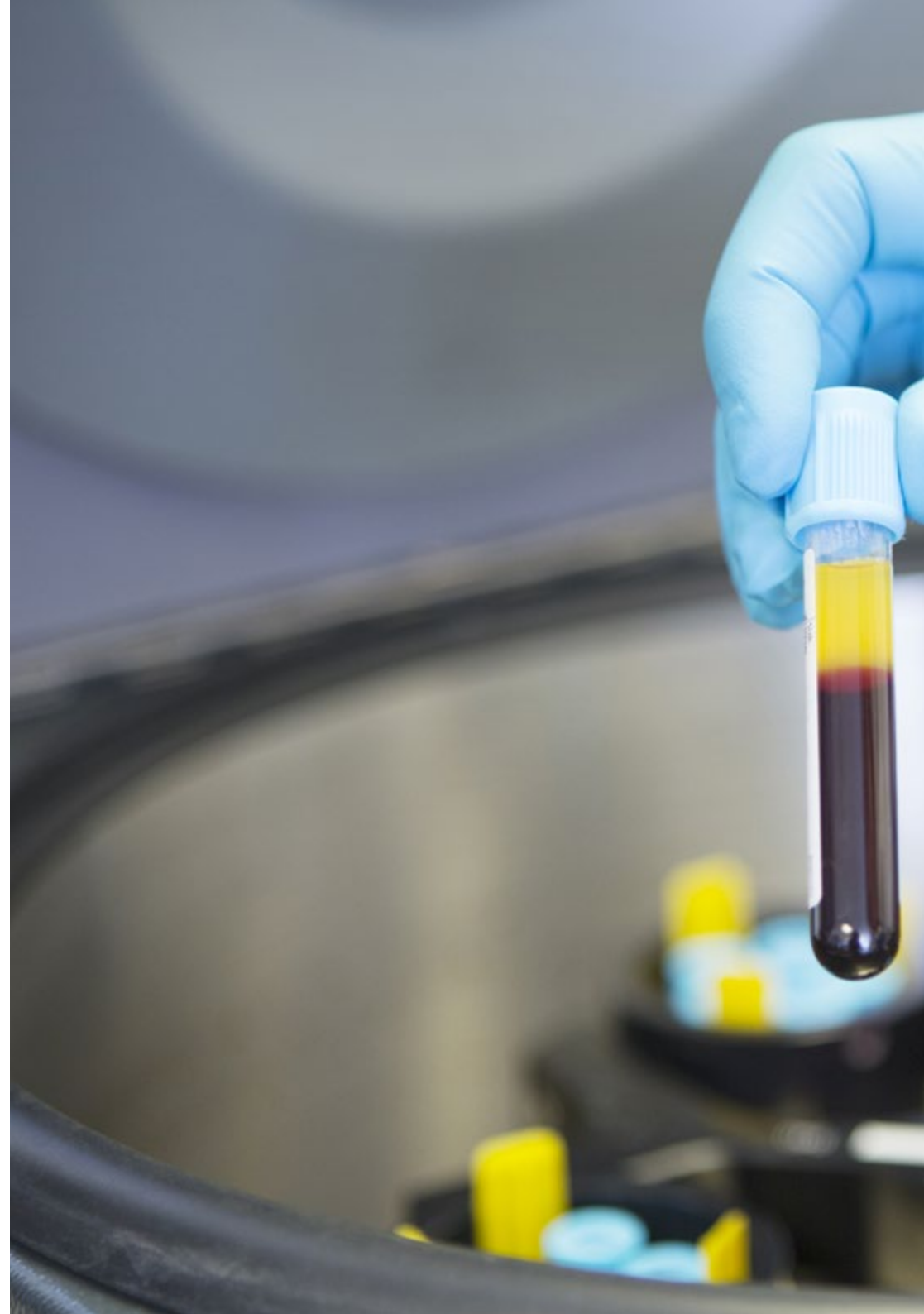
The area of Gynecological Care has also benefited from the constant advances in technology and science in recent years. Not only with more precise diagnostic methods, but also with the possibility of applying personalized therapy and with the most comfortable resources for both the professional and the patient. With this program, TECH offers cutting-edge teaching so that professionals can incorporate advances in their daily clinical practice.

2. Gaining In-depth Knowledge from the Experience of Top Specialists

This program has the support of a large and expert teaching team that has allowed the configuration of the most complete academic itinerary. In addition, the accompaniment of a designated tutor facilitates the achievement of the proposed goals during the 3-week Practical Training in a reference clinical center.

3. Entering First-Class Clinical Environments

This Hybrid Master's Degree has a practical part where the graduate will obtain the knowledge of the day to day practice of the Midwife in Gynecological Care. In order to provide the highest possible quality, TECH has carefully selected each hospital and the medical team that will accompany you.





4. Combining the Best Theory with State-of-the-Art Practice

With the purpose of offering a new learning model, TECH has developed this program with a theoretical part and a 100% practical part, where the nursing professional will consolidate everything studied in a real scenario with the best experts.

5. Expanding the Boundaries of Knowledge

Health professionals need to keep themselves in constant innovation and updating of the best alternatives for patient care, that is why TECH develops programs such as this Hybrid Master's Degree that will allow you to expand your knowledge frontiers thanks to the dynamics and methodology it uses.

“

You will have full practical immersion at the center of your choice”

03

Objectives

Both the theoretical part of the syllabus and the activities to be carried out during the practical stay have been designed so that midwives can acquire the necessary competencies and update their skills in Gynecological Care. Therefore, once the knowledge has been integrated by the graduate, they will be able to put it into practice under the guidance of renowned professionals and achieve the objectives proposed by TECH. Thanks to this exclusive qualification the professional to improve and enhance his or her skills in nursing care by addressing the main different interventions.





“

This program gives you the opportunity to up to date your knowledge in a real scenario, with the maximum scientific rigor of an institution at the forefront of technology. Improve your management of the gynecology patient and raise the level of your nursing care"

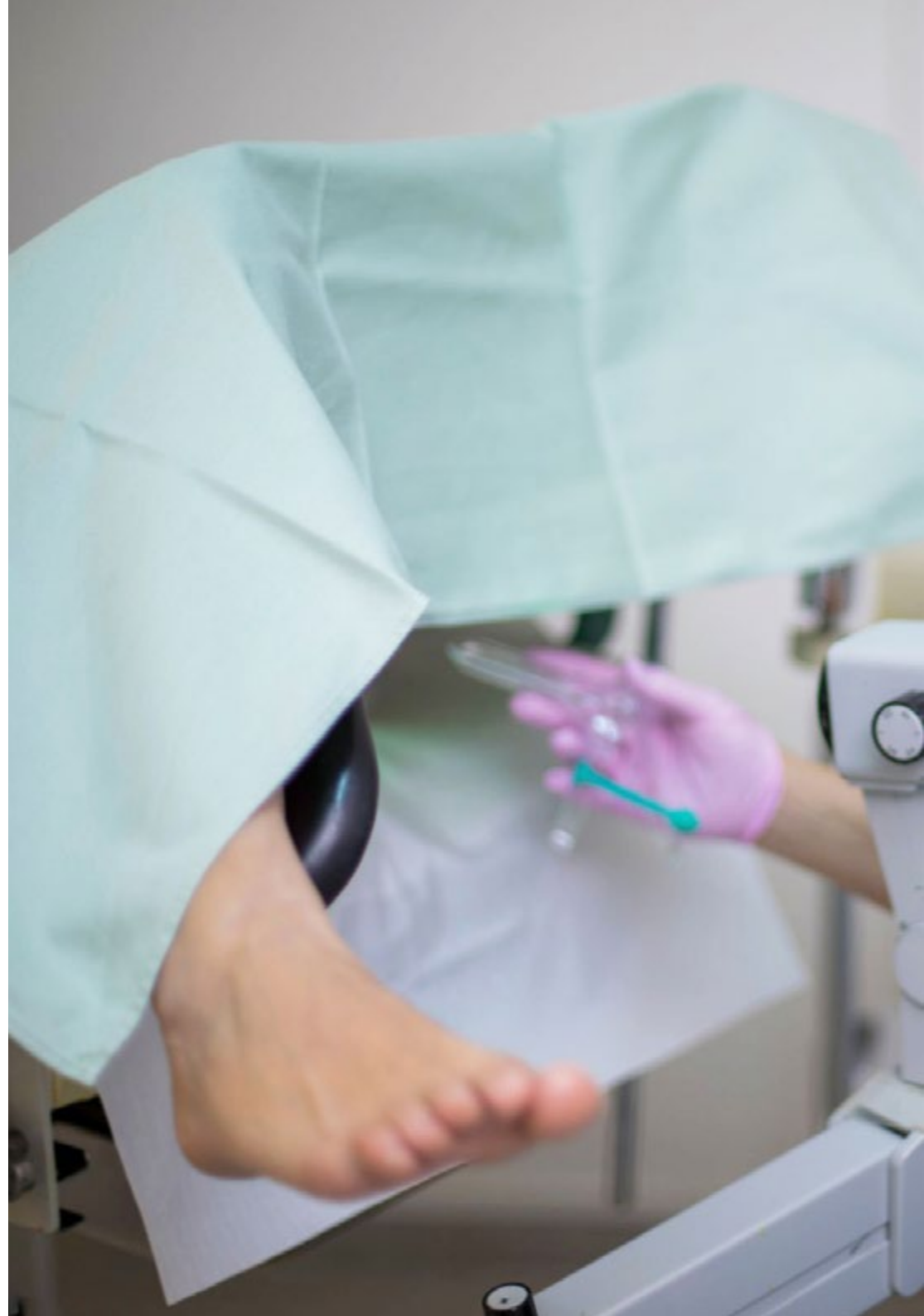


General Objective

- ♦ The general objective of the Hybrid Master's Degree in Gynecological Care for Midwives is diagnostic and therapeutic procedures of the specialty. Therefore, in a theoretical-practical way and through a hospital stay designed with clinical and academic rigor, you will have access to a hospital center of the highest scientific quality and technological innovation under the guidance of renowned professionals

“

If you want to advance in your career in a comfortable and effective way, don't think twice and enroll in this specialized program"





Specific Objectives

Module 1. Anatomy and Physiology of the Human Reproductive System

- ♦ Describe the anatomy and physiology of the male and female sexual apparatus
- ♦ Explain reproductive endocrinology
- ♦ Explain the development of sex differentiation
- ♦ Describe the ovarian and uterine cycle
- ♦ Explain male physiology

Module 2. Puberty, Menstruation and Climacteric Period

- ♦ Understand the neurohormonal regulation of reproductive function
- ♦ Describe the physiological process of the climacteric stage
- ♦ Describe the physiology of sexuality
- ♦ Define concepts related to menstrual symptoms
- ♦ Explain the procedure in gynecological examinations
- ♦ Describe the biological process of reproduction and the female sexual cycle and its psychological and social implications
- ♦ Explain the various pathologies that occur during puberty
- ♦ Describe the different menstrual disorders

Module 3. Gynecological Infectious Pathology and Sexually Transmitted Diseases

- ♦ Differentiate between hypothalamic and pituitary amenorrhea
- ♦ Describe the various functional uterine hemorrhages
- ♦ Explain the pathologies and treatments during the climacteric stage
- ♦ Describe sexually transmitted infections
- ♦ Explain the epidemiological aspects of sexually transmitted infections
- ♦ Describe the various treatments for sexually transmitted infections



Module 4. Care for Women with Gynecologic Problems

- ♦ Prepares health education strategies for at-risk populations
- ♦ Define the various types of primary prevention methods
- ♦ Defining pain of pelvic origin
- ♦ Classify the various malformations of the genital apparatus
- ♦ List the types of benign tumors
- ♦ Describe benign gynecologic pathology
- ♦ Explain the various alterations of genital statics
- ♦ Describe vulvovaginal pathology
- ♦ Describe cervical pathology and its treatment
- ♦ Get to know the uterine pathology and its treatment
- ♦ Learn about adnexal pathology and its treatment
- ♦ Up to date knowledge on early diagnosis of breast and gynecological cancer

Module 5. Care of Women with Gynecologic Oncologic Problems

- ♦ Get to know the various diagnostic tests in the detection of gynecological cancer
- ♦ Define the pathology of vulvar and vaginal tumors
- ♦ Describe benign cervical tumor pathology
- ♦ Understand intraepithelial neoplasia of the cervix
- ♦ Gain knowledge about invasive cervical cancer
- ♦ Understanding premalignant endometrial lesions
- ♦ Understanding carcinoma of the uterine corpus uteri
- ♦ Understand ovarian tumor pathology
- ♦ Get to know the different tumor markers
- ♦ Acquire knowledge of the psychological aspects of gynecological cancer and nursing care
- ♦ Learn about palliative care and pain management





Module 6. Gynecological Surgery

- ◆ Update knowledge on gynecological surgery
- ◆ Get to know the different types of gynecological anesthesia
- ◆ Get to know about preoperative and postoperative care
- ◆ Identify the various postoperative complications
- ◆ Learn about abdominal hysterectomy
- ◆ Get to know the laparoscopic and hysteroscopic surgery
- ◆ Acquire knowledge about robotic surgery applied to gynecology

Module 7. Breast Pathology

- ◆ Describe the clinical examination in breast pathology
- ◆ Learn about new diagnostics in the management of breast pathology
- ◆ Get to know the different breast pathologies
- ◆ Explain the various treatments and management of the breast cancer patient
- ◆ Gain knowledge about breast cancer during pregnancy

Module 8. Urinary Incontinence (UI)

- ◆ Acquire knowledge about urinary incontinence and its epidemiology
- ◆ Explain the diagnosis and treatment of urinary incontinence

Module 9. Gynecological and Obstetric Emergencies

- ◆ Acquire knowledge about the different gynecological emergencies
- ◆ Classify the different gynecological hemorrhages
- ◆ Implement strategies for the assistance to the precipitated birth

04 Competencies

Thanks to the up to date content under the latest scientific evidence and the vision of the expert team chosen by TECH to configure this program, the Nursing professional will acquire the skills and competencies they need to excel in the most effective and cutting-edge Gynecological Care for their patients. At the end of the theoretical study and the Practical Training, you will have a specialized profile and will develop the most innovative ideas to offer an ideal health service.



“

Your increased training is vitally important to improving gynecologic care for your patients. So continue with your TECH training”



General Skills

- ◆ Possess the knowledge that provides a basis or opportunity to be original in the development and/or application of ideas, often in a research context
- ◆ Apply acquired knowledge and problem-solving skills in new or unfamiliar environments within broader (or multidisciplinary) contexts related to the field of study
- ◆ Integrate knowledge to deal with the complexity of making judgments from incomplete or limited information
- ◆ Know how to communicate conclusions knowledge, and supporting arguments to specialized and non-specialized audiences in a clear and unambiguous way
- ◆ Acquire the learning skills that will enable further studying in a largely self-directed or autonomous manner

“

Delve into the most relevant theory in this field, subsequently applying it in a real work environment”





Specific Skills

- ◆ Participate and, if necessary, lead and energize maternal and child health, women's health, sexual health, reproductive health and climacteric programs
- ◆ Provide adequate health education to women, families and communities, identifying learning needs in relation to maternal and child health, sexual health, reproductive health and the climacteric period, carrying out the different educational programs related to the needs detected
- ◆ Provide affective sexual and reproductive counseling to women, youth and families
- ◆ Promote a positive experience and a responsible attitude towards sexuality in the population and provide contraceptive counseling
- ◆ Collaborate in the implementation of activities for the promotion, prevention, assistance and recovery of women's sexual and reproductive health
- ◆ Detect risk factors and gynecological problems in women
- ◆ Apply the principles of clinical reasoning, problem detection, decision-making, care and attention planning and appropriate assessment to the different clinical situations in the field of nursing care

05

Course Management

In order to provide midwives with an elite education, TECH has prepared for this program a syllabus developed by renowned professionals in Obstetrics and Gynecology. In this way, the graduate will have access to an exclusive degree created by authentic nursing eminences with an excellent professional career. Therefore, this faculty will help keep students at the forefront of their field.





“

Leading professionals in the field of Gynecology have configured this program and will provide you with the most relevant technological and scientific advances in this field"

Management



Dr. Rodríguez Díaz, Luciano

- ◆ Nursing Specialist in Obstetrics and Gynecology
- ◆ Head of Studies of the Obstetric-Gynecological Nursing Teaching Unit (Midwife) of the University Hospital of Ceuta
- ◆ Midwife at the University Hospital of Ceuta
- ◆ Teacher at the University Centre of Nursing Virgen of La Paz. Ronda, Spain
- ◆ Professor of the Ceuta Midwifery Teaching Unit
- ◆ Member of the Obstetric and Gynecological Emergencies Group of the Spanish Society of Emergency Nursing (SEEUE)
- ◆ Responsible for Perinatal Health: Reproductive Sexual Health and Normal Childbirth of Ingesa
- ◆ Member of the Clinical Commission for Research and Continuing Education of the University Hospital of Ceuta
- ◆ Member of the Instituto de Estudios Ceutíes, Editorial Board of the European Journal of Health Research, Spanish Society of Emergency Medicine
- ◆ PhD from the University of Granada
- ◆ Master's Degree in Physical Education and Health at the University of Granada
- ◆ Master's Degree in Gynecological Nursing at the CEU Cardenal Herrera University
- ◆ Master's Degree in Obstetric Nursing at the CEU Cardenal Herrera University
- ◆ Speciality in Nursing Obstetric and Gynecological at the University of Malaga
- ◆ University Diploma in Nursing, University of Cadiz
- ◆ Expert in Health Promotion in The Community by the National Distance Education University (UNED)



Dr. Vázquez Lara, Juana María

- ♦ Primary Care Nurse
- ♦ Emergency Service of 061 Nurse of the Ceuta Health Management Area
- ♦ PhD from the University of Granada
- ♦ Acting midwife of the Delivery Service at the University Hospital of Ceuta
- ♦ Head of Studies of the Ceuta Midwifery Teaching Unit
- ♦ Professor in the Ceuta Midwifery Teaching Unit
- ♦ National Coordinator of the Obstetric-Gynecological Emergencies working group of the Spanish Society of Emergency Nursing (SEEUE)
- ♦ Master's Degree of the Official Doctoral Program in Physical Education and Health
- ♦ Postgraduate Diploma on "Health Promotion in the Community" UNED
- ♦ Specialty in Obstetric and Gynecological Nursing (Midwife), Costa del Sol Hospital, Marbella University School of Malaga
- ♦ University Diploma in Nursing "Salus Infirmorum" University School of Nursing, University of Cádiz

Professors

Dr. Andrés Núñez, Carmen Patricia

- ♦ Specialist in Obstetrics and Gynecology at the University Hospital of Ceuta
- ♦ Specialist in Gynecology and Obstetrics at Quirónsalud Campo of Gibraltar Hospital
- ♦ INGESA Specialist Physician
- ♦ Gynecology Outpatient Unit at the San Cecilio University Hospital. Granada
- ♦ Degree in Medicine and Surgery

Dr. Carrasco Racero, María Mercedes

- ♦ Nurse Practitioner in Gynecological Care
- ♦ Internship Coordinator at the University Center of Nurses. Ronda, Spain
- ♦ Degree in Nursing
- ♦ Teacher

Ms. De Dios Pérez, María Isabel

- ♦ Midwife at the University Hospital of Zaragoza
- ♦ Postgraduate Certificate in Nursing
- ♦ Nursing Specialist in Obstetrics and Gynecology

Ms. Llinás Prieto, Lucía

- ♦ Nurse Practitioner in Gynecological Care
- ♦ Teacher
- ♦ Postgraduate Certificate in Nursing

Ms. Díaz Lozano, Paula

- ♦ Midwife, University Hospital Virgen de Valme
- ♦ Midwife in the Ceuta Health Area
- ♦ Specialist in Obstetrics and Gynecology at the University Hospital of Ceuta
- ♦ Teacher specialized in Obstetrics
- ♦ Diploma in Nursing, Faculty of Nursing and Physiotherapy of Cádiz

Ms. Gilart Cantizano, Patricia

- ♦ Nurse specialized in Obstetrics and Gynecology
- ♦ Midwife of Specialized Care in Campo de Gibraltar
- ♦ Midwife Quirónsalud Campo de Gibraltar Hospital
- ♦ EIR midwife in the Andalusian Health Service
- ♦ Nurse in the and Intensive Care Critical and Emergency Departments in the Andalusian Health Service
- ♦ Teacher
- ♦ Postgraduate Certificate in Nursing
- ♦ Expert university in Pharmacy Nutrition at the IFBBB
- ♦ Expert university in cardiovascular risks III at the IFBBB
- ♦ University Expert in Accidents and Emergencies from the Complutense University of Madrid

Mr. Márquez Díaz, Antonio

- ♦ Midwife in Primary Care in Andalusian Government
- ♦ Midwife, El Angel Hospital HLA Group
- ♦ Midwife of in Vithas Hospital
- ♦ Intern Resident Nursing Plan Tutor
- ♦ OPOSALUD Tutor
- ♦ University Diploma in Emergency Nursing, El Ángel Hospital
- ♦ Nursing University Diploma in ICU Pediatrics and Neonatal Unit of El Ángel Hospital
Resident Midwife, Andalusian Regional Government
- ♦ Midwife, Costa del Sol Hospital
- ♦ Midwife Quirón Campo de Gibraltar Hospital
- ♦ Official Master in Economy, Health Management and Rational Use of Medicines by the University of Málaga
- ♦ Official Master's Degree in New Trends in Health Sciences Research by the University of Málaga
- ♦ Master's Degree in Public Health from the University de Almería
- ♦ Master's Degree in Nurse Prescriptions and Pharmacotherapeutic Monitoring, University of Valencia
- ♦ Master's Degree in Pharmacotherapy, University of Valencia
- ♦ Diploma in Nursing from the University of Malaga

Mr. Mérida Téllez, Juan Manuel

- ♦ Nurse specialized in Obstetrics and Gynecology
- ♦ Midwife, Costa del Sol Hospital. Marbella, Spain
- ♦ Teacher
- ♦ Diploma in Nursing

Dr. Mérida Yáñez, Beatriz

- ♦ Nurse specialized in Obstetrics and Gynecology
- ♦ Midwife in the Andalusian Health Service
- ♦ Midwife of the Vithas Hospital
- ♦ Midwife of the Murcia Health Service
- ♦ Doctor in Health Sciences
- ♦ Postgraduate Certificate in Nursing
- ♦ Member of: committee of the First International Congress of Research and Innovation in Nursing and Physiotherapy of Ceuta and Melilla

D. Muñoz Vela, Francisco Javier

- ♦ Nurse specialized in Obstetrics and Gynecology
- ♦ Nursing from internship coordinator at the Maternity and Infant Care Center of Málaga
- ♦ Midwives in the Carlos Haya Regional University Hospital
- ♦ Midwives in the San Antonio Park Hospital
- ♦ Midwife in Specialized in Care at the MaternalChild Care Hospital of Málaga
- ♦ Associate Professor of the Nursing Department at the University of Malaga
- ♦ Diploma in Nursing from the University of Malaga

Ms. Palomo Gómez, Rocío

- ◆ Nurse specialized in Gynecology and Obstetrics
- ◆ Ceuta Specialized Care Midwife
- ◆ Midwives in the Carlos Haya Regional University Hospital. Malaga, Spain
- ◆ Teacher in the Malaga Midwifery Unit
- ◆ Postgraduate Certificate in Nursing

Ms. Revidiego Pérez, María Dolores

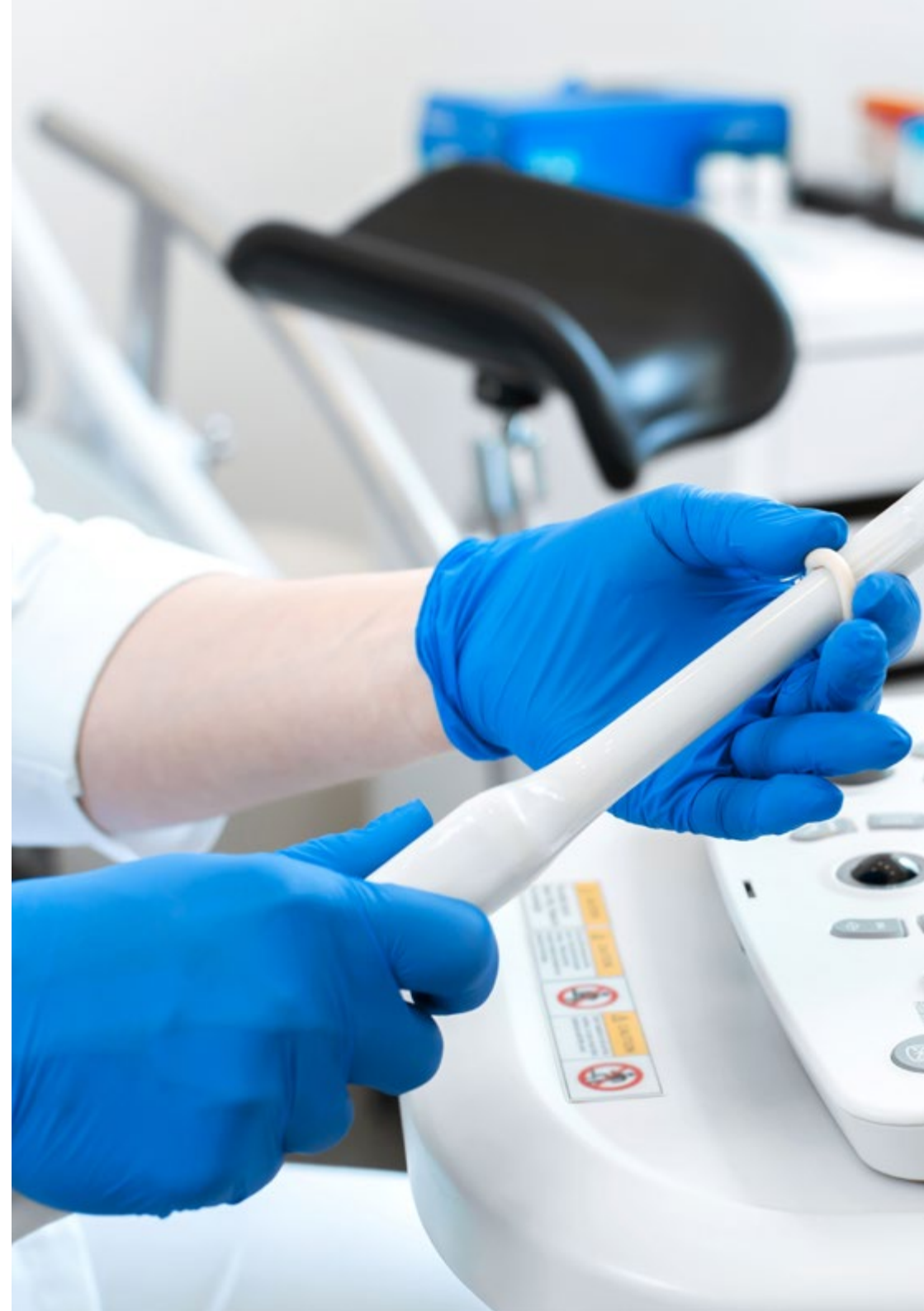
- ◆ Nurse specialized in Gynecology and Obstetrics
- ◆ Midwife of Specialized Care in Campo de Gibraltar
- ◆ Midwife Quironsalud Campo de Gibraltar Hospital
- ◆ Teacher
- ◆ Postgraduate Certificate in Nursing

Dr. Rivero Gutiérrez, Carmen

- ◆ Midwives in Primary Care in the Ceuta Health Area
- ◆ Midwife in Ingesa Ceuta
- ◆ Midwife at the Puerta del Mar University Hospital Complex
- ◆ Professor and Tutor of the Ceuta Midwifery Teaching Unit
- ◆ Postgraduate Certificate in Nursing

Mr. Rodríguez Díaz, David

- ◆ Nurse at Nuestra Señora de Candelaria University Hospital
- ◆ Teacher
- ◆ Diploma in Nursing



Dr. Vázquez Lara, Francisco José

- ◆ Specialist in Biological Sciences
- ◆ Teacher
- ◆ PhD from the Polytechnic University of Valencia
- ◆ Degree in Biological Sciences

Ms. Vázquez Lara, María Dolores

- ◆ Nurse specialized in primary care of pregnant women
- ◆ Campo de Gibraltar Primary Care Nurse
- ◆ Teacher
- ◆ Diploma in Nursing

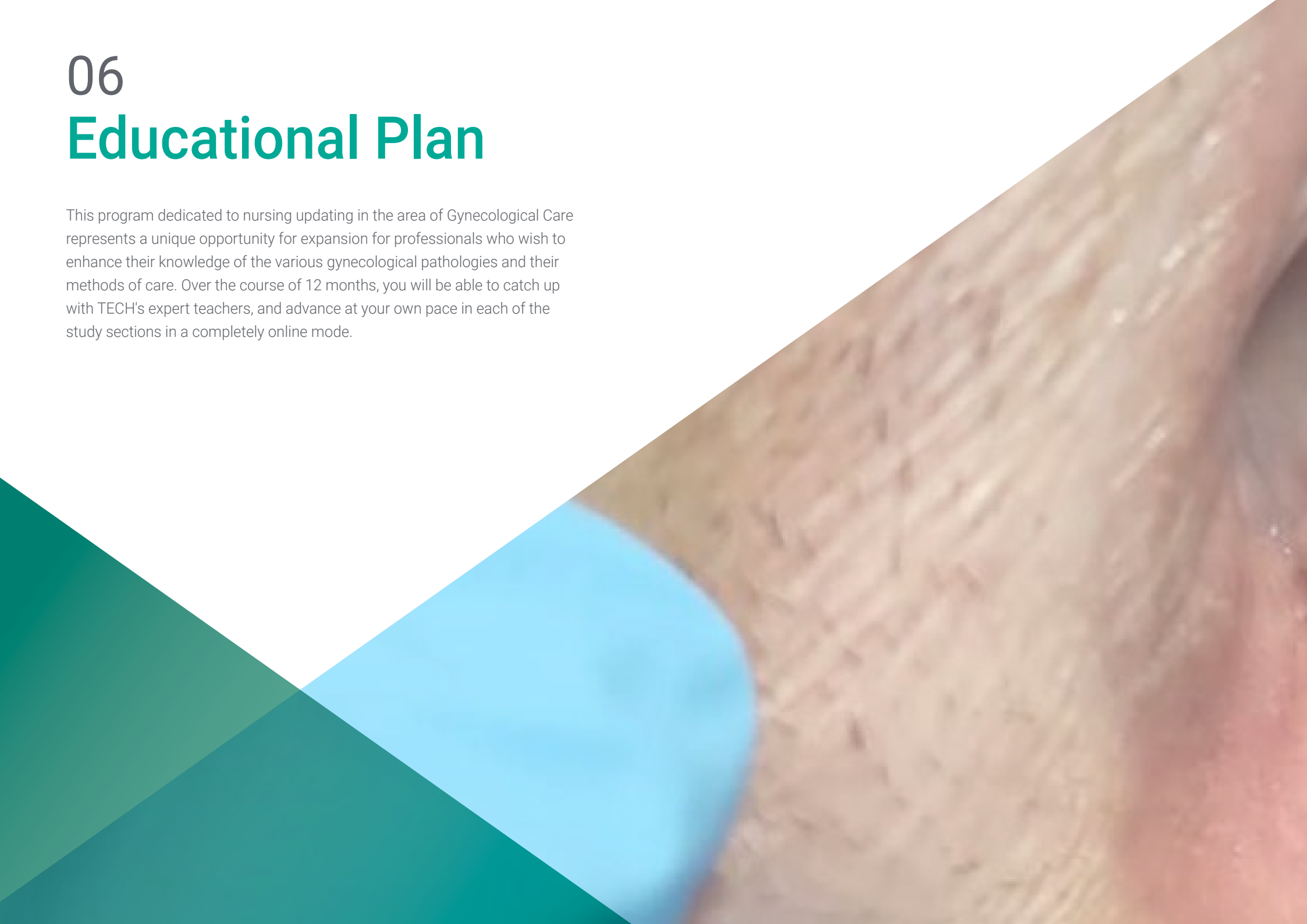
“

You will combine theory and professional practice through a demanding and rewarding educational approach”

06

Educational Plan

This program dedicated to nursing updating in the area of Gynecological Care represents a unique opportunity for expansion for professionals who wish to enhance their knowledge of the various gynecological pathologies and their methods of care. Over the course of 12 months, you will be able to catch up with TECH's expert teachers, and advance at your own pace in each of the study sections in a completely online mode.





“

*This training will allow you to advance
in your career in a comfortable way
and with the quality they deserve”*

Module 1. Anatomy and Physiology of the Human Reproductive System

- 1.1. Anatomy of Male and Female Genital Tract
 - 1.1.1. Female Description
 - 1.1.2. Male Description
- 1.2. Histology of the Genital Organs and Breast
 - 1.2.1. Histological Description
- 1.3. Introduction to the Cellular and Genetic Basis of Female Gametogenesis
 - 1.3.1. Cellular and Genetic Description
- 1.4. Basis of Reproductive Endocrinology
 - 1.4.1. The Reproductive Hormonal Process
- 1.5. Sex Acquisition
 - 1.5.1. Sexual Differentiation
- 1.6. Female Physiology
 - 1.6.1. Ovarian Cycle
 - 1.6.2. Uterine Cycle
 - 1.6.3. Cycle and Physiology of the Vagina and Vulva
- 1.7. Male Physiology
 - 1.7.1. Testes and Gametogenesis
 - 1.7.2. Testicular Functional Regulation
 - 1.7.3. Male Sex Accessory Glands
 - 1.7.4. Ejaculation. The Ejaculate and its Composition
- 1.8. Neurohormonal Regulation of the Reproductive function. The Diencephalon-Pituitary-Gonads Axis
 - 1.8.1. Process of Hormonal Regulation
 - 1.8.2. Feedback
- 1.9. Puberty
 - 1.9.1. Concept
 - 1.9.2. Differentiation
- 1.10. Climacteric Physiology
 - 1.10.1. Chronology
 - 1.10.2. Phenomenology
 - 1.10.3. Mechanisms
- 1.11. Human Sexuality
 - 1.11.1. Sexual Physiology: Neuroendocrine and Psychological Aspects

- 1.12. Symptoms of Gynecological Diseases, Menstrual Symptoms
 - 1.12.1. Terminology and General Considerations
 - 1.12.2. General Discharge and its Treatments
- 1.13. Complementary Gynecological Examinations
 - 1.13.1. Cervical Cytology
 - 1.13.2. Speculoscopy
 - 1.13.3. Manual Vaginal Examination
 - 1.13.4. Vaginal Exudate
 - 1.13.5. Colposcopy
 - 1.13.6. Hysteroscopy

Module 2. Puberty, Menstruation and Climacteric Period

- 2.1. Pathology of Puberty
 - 2.1.1. Precocious Puberty
 - 2.1.2. Pubertal Delay
- 2.2. Menstrual Disturbances
 - 2.2.1. Hypothalamic Amenorrhea
 - 2.2.2. Amenorrhea of the Pituitary Type
 - 2.2.3. Hyperprolactinemia
- 2.3. Uterine Amenorrhea
 - 2.3.1. Protocol
 - 2.3.2. Diagnosis
- 2.4. Functional Uterine Bleeding
 - 2.4.1. Ovulatory Bleeding
 - 2.4.2. Anovulatory Bleeding
 - 2.4.3. Extragenital Bleeding
- 2.5. Climacteric Pathology
 - 2.5.1. Treatment of Climacteric Pathology: HRT
 - 2.5.2. Hormone Replacement Therapy and Gynecologic Cancer
 - 2.5.3. Complementary or Alternative Measures in Menopause

2.5.4. Phytoestrogens

Module 3. Gynecological Infectious Pathology and Sexually Transmitted Diseases

- 3.1. Sexually Transmitted Infections
 - 3.1.1. Etiology
 - 3.1.2. Epidemiology
- 3.2. Infectious Processes of the Reproductive System
 - 3.2.1. Etiology
 - 3.2.2. Classification
 - 3.2.3. Treatment
- 3.3. Vulvovaginitis
 - 3.3.1. Description
 - 3.3.2. Treatment
- 3.4. Vaginal Candidiasis
 - 3.4.1. Description
 - 3.4.2. Treatment
- 3.5. Bacterial Vaginosis
 - 3.5.1. Description
 - 3.5.2. Treatment
- 3.6. Vaginal Trichomoniasis
 - 3.6.1. Description
 - 3.6.2. Treatment
- 3.7. Syphilis
 - 3.7.1. Description
 - 3.7.2. Treatment
- 3.8. Chancroid
 - 3.8.1. Description
 - 3.8.2. Treatment
- 3.9. Lymphogranuloma Venereum
 - 3.9.1. Description
 - 3.9.2. Treatment
- 3.10. Simple Herpes
 - 3.10.1. Description
 - 3.10.2. Treatment
- 3.11. Infections Leading to Urethritis and Cervicitis

- 3.11.1. Description
- 3.11.2. Treatment
- 3.12. Condylomata Acuminata
 - 3.12.1. Description
 - 3.12.2. Treatment
- 3.13. Contagious Molusco
 - 3.13.1. Description
 - 3.13.2. Treatment
- 3.14. Scabies
 - 3.14.1. Description
 - 3.14.2. Treatment
- 3.15. Pediculosis Pubis
 - 3.15.1. Description
 - 3.15.2. Treatment
- 3.16. HIV
 - 3.16.1. Description
 - 3.16.2. Treatment
- 3.17. Pelvic Inflammatory Disease
 - 3.17.1. Description
 - 3.17.2. Treatment
- 3.18. Papillomavirus Infection
 - 3.18.1. Description
 - 3.18.2. Treatment

Module 4. Care for Women with Gynecologic Problems

- 4.1. Pain of Pelvic Origin
 - 4.1.1. Dysmenorrhea
 - 4.1.2. Premenstrual Syndrome, Endometriosis and Others
 - 4.1.3. Nursing Care
- 4.2. Malformations of the Genital Tract
 - 4.2.1. Malformations of the Vulva
 - 4.2.2. Malformations of the Vagina
 - 4.2.3. Malformations of the Cervix
 - 4.2.4. Malformations of the Uterine Body
 - 4.2.5. Ovarian Malformations
 - 4.2.6. Malformations of the Lower Urinary Organs Urogenital Fistulas

- 4.2.7. Female Genital Mutilation
- 4.2.8. Breast Malformations
- 4.3. Benign Tumors
 - 4.3.1. Benign Tumors of the Vulva
 - 4.3.2. Benign Tumors of the Vagina
 - 4.3.3. Benign Tumors of the Ovary
- 4.4. Benign Gynecologic Pathology
 - 4.4.1. Benign Pathology of the Uterine Cervix
 - 4.4.2. Benign Pathology of the Uterine and Endometrial Body
 - 4.4.3. Benign Pathology of the Fallopian Tube
- 4.5. Alterations of Genital Statics
 - 4.5.1. Uterine Prolapse
 - 4.5.2. Cystocele
 - 4.5.3. Rectocele
 - 4.5.4. Enterocele
- 4.6. Vulvovaginoperineal Tears and Rectovaginal Fistulas
- 4.7. Vulvovaginal Pathology
 - 4.7.1. Vulvovaginitis
 - 4.7.2. Bartholinitis
 - 4.7.3. Lichen Sclerosus
 - 4.7.4. Paget's Disease
 - 4.7.5. Vulvar and Vaginal Cancer
- 4.8. Cervical Pathology
 - 4.8.1. Cervicitis
 - 4.8.2. Polyps
 - 4.8.3. Cervical Cancer
- 4.9. Uterine Pathology
 - 4.9.1. Uterine Myoma
 - 4.9.2. Endometrial Cancer
- 4.10. Adnexal Pathology
 - 4.10.1. Pelvic Inflammatory Disease (PID)
 - 4.10.2. Polycystic Ovary Syndrome (PCOS)

- 4.10.3. Endometriosis
- 4.10.4. Ovarian Carcinoma

Module 5. Care of Women with Gynecologic Oncologic Problems

- 5.1. Early Diagnosis of Breast and Gynecologic Cancer
 - 5.1.1. Early Diagnosis and Population Screening Programs
 - 5.1.2. Detection of Risk Groups
- 5.2. Epidemiology of Breast and Gynecologic Cancer
 - 5.2.1. Explorations and Diagnostic Tests
- 5.3. Breast and Gynecological Cancer
 - 5.3.1. Description
 - 5.3.2. Treatment
- 5.4. Vulvar Cancer
 - 5.4.1. Description
 - 5.4.2. Treatment
- 5.5. Cervical Cancer
 - 5.5.1. Description
 - 5.5.2. Treatment
- 5.6. Endometrial Cancer
 - 5.6.1. Description
 - 5.6.2. Treatment
- 5.7. Uterine Sarcoma
 - 5.7.1. Description
 - 5.7.2. Treatment
- 5.8. Ovarian Cancer
 - 5.8.1. Description
 - 5.8.2. Treatment
- 5.9. Breast Cancer
 - 5.9.1. Description
 - 5.9.2. Treatment

- 5.10. Psychological Aspects of Gynecologic Cancer
 - 5.10.1. Nursing Care
 - 5.10.2. Palliative Care and Pain Management

Module 6. Gynecological Surgery

- 6.1. Gynecological Surgical Interventions
 - 6.1.1. Gynecological Surgery
 - 6.1.2. Breast Surgery
- 6.2. The Hospitalized Gynecologic Patient
 - 6.2.1. Preoperative Care
 - 6.2.2. Postoperative Care
 - 6.2.3. Complications
- 6.3. Anesthesia in Gynecology
 - 6.3.1. Description of the Different Techniques
 - 6.3.2. Nursing Care
- 6.4. Endoscopic Surgery (Laparoscopy)
 - 6.4.1. Description
 - 6.4.2. Action Protocol
- 6.5. Endoscopic Surgery (Hysteroscopy)
 - 6.5.1. Description
 - 6.5.2. Action Protocol
- 6.6. Tubal Surgery
 - 6.6.1. Description
 - 6.6.2. Action Protocol
- 6.7. Robotic Surgery Applied to Gynecology
 - 6.7.1. Description
 - 6.7.2. Nursing Care

Module 7. Breast Pathology

- 7.1. Clinical and Instrumental Examination in Breast Pathology
 - 7.1.1. Different Exploratory Methods
 - 7.1.2. Types of Diagnostic Methods
- 7.2. Benign Breast Pathology
 - 7.2.1. Abnormalities

- 7.2.2. Functional Disorders
- 7.2.3. Mastodynia
- 7.2.4. Inflammatory Processes
- 7.2.5. Benign Tumor Pathology
- 7.3. Breast Cancer
 - 7.3.1. Epidemiology and Risk Factors
 - 7.3.2. Primary prevention. Early Diagnosis. Non Palpable Lesions
 - 7.3.3. Clinical and Development
 - 7.3.4. TNM Classification
 - 7.3.5. Biology of Mammary Carcinoma (Markers)
- 7.4. Treatments for Breast Cancer
 - 7.4.1. Types of Treatment
 - 7.4.2. Nursing Care
- 7.5. Follow-Up and Monitoring of the Breast Cancer Patient
 - 7.5.1. Care Management
 - 7.5.2. Health education

Module 8. Urinary Incontinence (UI)

- 8.1. Epidemiology of Urinary Incontinence
 - 8.1.1. Prevalence
 - 8.1.2. Incidence
- 8.2. Types of Urinary Incontinence
 - 8.2.1. Concept
 - 8.2.2. Classification
- 8.3. Assessment of Midwives in Urinary Incontinence
- 8.4. Diagnosis of Urinary Incontinence
 - 8.4.1. Exploratory Methods
 - 8.4.2. Diagnostic Techniques
- 8.5. Treatment of Urinary Incontinence

- 8.5.1. Non-Surgical Treatment
- 8.5.2. Surgical Management
- 8.6. Prevention and Midwifery Approach to Urinary Incontinence in Women
 - 8.6.1. Health Education

Module 9. Gynecological and Obstetric Emergencies

- 9.1. Gynecological Abdominal Pain
 - 9.1.1. Concept
- 9.2. Trauma and Injuries of the Genital Tract
 - 9.2.1. Types
- 9.3. Sexual Aggressions
 - 9.3.1. Concept
 - 9.3.2. Diagnosis
- 9.4. Gynecological Hemorrhage
 - 9.4.1. Classification
- 9.5. Threat of Preterm Birth
 - 9.5.1. Concept
 - 9.5.2. Treatment
- 9.6. Hypertensive States of Pregnancy
 - 9.6.1. Classification
 - 9.6.2. Treatment
- 9.7. Obstetric Hemorrhage
 - 9.7.1. Hemorrhages in the 1st Trimester of Pregnancy
 - 9.7.2. Hemorrhages in the 2nd and 3rd Trimester of Pregnancy
 - 9.7.3. Postpartum Hemorrhage





“

Enroll now and advance in your field of work with a comprehensive program that will allow you to put into practice everything you have learned”

07

Clinical Internship

After passing the online from teaching period, the program includes a period of practical training in a reference clinical center. The student will have at their disposal the support of a tutor who will accompany them during the whole process, both in the preparation and in the development of the clinical practice.





“

*Do your clinical internship in
one of the best international
hospital centers”*

The Practical Training period of this Gynecological Care Midwives program consists of a 3-week clinical practicum, Monday through Friday, with 8 consecutive hours of practical training with an attending specialist. This stay allow you to deal with real patients with a team of reference professionals in the of Gynecological field, applying the most innovative diagnostic procedures and planning the latest generation Therapeutics in each pathology.

In this completely practical Internship Program, the activities are aimed at developing and perfecting the skills necessary to provide Healthcare in areas and conditions that require highly qualified professionals, and are oriented towards specific expertise for practicing the activity, in a safe environment for the patient and Cone with highly professional performance.

The practical part will be carried out with the active participation of the student performing the activities and procedures of each area of competence (learning to learn and learning to do), with the accompaniment and guidance of the professors and other training partners to facilitate teamwork and multidisciplinary integration as transversal competencies for nursing praxis Clinical Analysis(learning to be and learning to relate).

The procedures described below will form the basis of the practical part of the training, and their implementation is subject to both the suitability of the patients and the availability of the center and its workload, with the proposed activities being as follows:



Module	Practical Activity
Gynecological Care by the Midwife	Diagnose the pregnancy and supervise its normal development, performing the necessary tests
	Carry out the pertinent weight, blood pressure, etc. controls
	Teaching childbirth preparation classes
	Explain breathing and relaxation techniques to apply during contractions
	Inform about the tests that the pregnant woman will have to undergo; analytical tests, glucose test, monitors, etc
	Counseling about sexuality and contraceptive methods
	Perform cytology and colposcopy
Care of Women with Gynecologic Oncologic Problems	Detect risk factors and gynecological problems and to
	Perform the Early Diagnosis of Breast and Gynecologic Cancer
	Participate in the diagnosis and treatment of gynecological and breast cancer
	Participate in the diagnosis and treatment of Vulva cancer
	Participate in the diagnosis and treatment the Uterine Cervix cancer
	Participate in the diagnosis and treatment of Endometrium cancer
	Participate in the diagnosis and treatment of Ovaries cancer

Module	Practical Activity
Diagnostic care for patients undergoing puberty, menstruation and climacteric	Assess the pelvic floor and informs about the forecast of incontinence
	To care for women in the climacteric period, the period of morphological, functional and psychological changes that occur over time as menopause approaches
	Provide nursing care to patients with Uterine Amenorrhea
	Provide nursing care to patients Functional Uterine Bleeding
	Identify the Symptoms of Gynecological Diseases, Menstrual Symptoms
	Perform complementary gynecological examinations
Care for Women with Gynecologic Problems and emergencies	Provide nursing care to patients with Pain of Pelvic Origin
	Provide nursing care to patients with Benign Tumors
	Participate in the diagnosis and treatment of cervical pathology
	Recognize the symptoms and signs of uterine pathology
	Provide nursing care to patients Adnexal Pathology
	Care Trauma and Injuries of the Genital Tract
Care for Women with Gynecologic Surgery	Provide nursing care in cases of sexual assault
	Provide nursing care during anesthesia in gynecology
	Participate in endoscopic surgery (laparoscopy)
	Participate in endoscopic surgery (Hysteroscopies)
	Participate in tubal surgery
	Participate in robotic surgery applied to gynecology
Control of episiotomy or cesarean section stitches	

Civil Liability Insurance

This institution's main concern is to guarantee the safety of the trainees and other collaborating agents involved in the internship process at the company. Among the measures dedicated to achieve this is the response to any incident that may occur during the entire teaching-learning process.

To this end, this entity commits to purchasing a civil liability insurance policy to cover any eventuality that may arise during the course of the internship at the center.

This liability policy for interns will have broad coverage and will be taken out prior to the start of the practical training period. That way professionals will not have to worry in case of having to face an unexpected situation and will be covered until the end of the internship program at the center.



General Conditions of the Internship Program

The general terms and conditions of the internship agreement for the program are as follows:

1. TUTOR: During the Hybrid Master's Degree, students will be assigned with two tutors who will accompany them throughout the process, answering any doubts and questions that may arise. On the one hand, there will be a professional tutor belonging to the internship center who will have the purpose of guiding and supporting the student at all times. On the other hand, they will also be assigned with an academic tutor whose mission will be to coordinate and help the students during the whole process, solving doubts and facilitating everything they may need. In this way, the student will be accompanied and will be able to discuss any doubts that may arise, both clinical and academic.

2. DURATION: The internship program will have a duration of three continuous weeks, in 8-hour days, 5 days a week. The days of attendance and the schedule will be the responsibility of the center and the professional will be informed well in advance so that they can make the appropriate arrangements.

3. ABSENCE: If the students does not show up on the start date of the Hybrid Master's Degree, they will lose the right to it, without the possibility of reimbursement or change of dates. Absence for more than two days from the internship, without justification or a medical reason, will result in the professional's withdrawal from the internship, therefore, automatic termination of the internship. Any problems that may arise during the course of the internship must be urgently reported to the academic tutor.

4. CERTIFICATION: Professionals who pass the Hybrid Master's Degree will receive a certificate accrediting their stay at the center.

5. EMPLOYMENT RELATIONSHIP: The Hybrid Master's Degree shall not constitute an employment relationship of any kind.

6. PRIOR EDUCATION: Some centers may require a certificate of prior education for the Hybrid Master's Degree. In these cases, it will be necessary to submit it to the TECH internship department so that the assignment of the chosen center can be confirmed.

7. DOES NOT INCLUDE: The Hybrid Master's Degree will not include any element not described in the present conditions. Therefore, it does not include accommodation, transportation to the city where the internship takes place, visas or any other items not listed

However, students may consult with their academic tutor for any questions or recommendations in this regard. The academic tutor will provide the student with all the necessary information to facilitate the procedures in any case.

08

Where Can I Do the Clinical Internship?

In its maxim of offering quality education within the reach of most people, TECH has are willing to broaden the academic horizons so that the can be taught in various in geography national and international from centers. A unique opportunity that allows the professional to continue to grow their career alongside the best specialists in the sector in various reference clinics.





“

Choose the hospital center of your preference and develop this Practical Training with the comfort and quality you need”



The student will be able to complete the practical part of this Hybrid Master's Degree at the following centers:



Nursing

Hospital Maternidad HM Belén

Country	City
Spain	La Coruña

Address: R. Filantropía, 3, 15011, A Coruña

Network of private clinics, hospitals and specialized centers distributed throughout Spain.

Related internship programs:

- Update in Assisted Reproduction
- Hospitals and Health Services Management



Nursing

Hospital HM Rosaleda

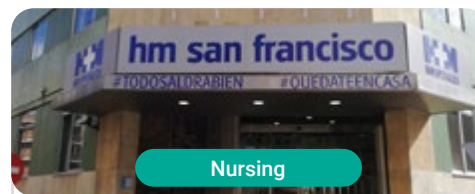
Country	City
Spain	La Coruña

Address: Rúa de Santiago León de Caracas, 1, 15701, Santiago de Compostela, A Coruña

Network of private clinics, hospitals and specialized centers distributed throughout Spain.

Related internship programs:

- Hair Transplantation
- Orthodontics and Dentofacial Orthopedics



Nursing

Hospital HM San Francisco

Country	City
Spain	León

Address: C. Marqueses de San Isidro, 11, 24004, León

Network of private clinics, hospitals and specialized centers distributed throughout Spain.

Related internship programs:

- Update in Anesthesiology and Resuscitation
- Nursing in the Traumatology Department



Nursing

Hospital HM Regla

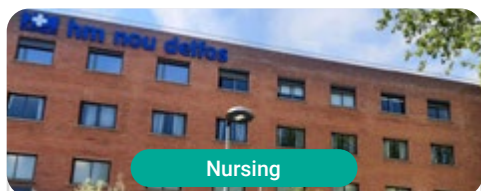
Country	City
Spain	León

Address: Calle Cardenal Landázuri, 2, 24003, León

Network of private clinics, hospitals and specialized centers distributed throughout Spain.

Related internship programs:

- Update on Psychiatric Treatment in Minor Patients



Nursing

Hospital HM Nou Delfos

Country	City
Spain	Barcelona

Address: Avinguda de Vallcarca, 151, 08023 Barcelona

Network of private clinics, hospitals and specialized centers distributed throughout Spain.

Related internship programs:

- Aesthetic Medicine
- Clinical Nutrition in Medicine



Nursing

Hospital HM Madrid

Country	City
Spain	Madrid

Address: Pl. del Conde del Valle de Súchil, 16, 28015, Madrid

Network of private clinics, hospitals and specialized centers distributed throughout Spain.

Related internship programs:

- Palliative Care
- Anaesthesiology and Resuscitation



Nursing

Hospital HM Montepíncipe

Country	City
Spain	Madrid

Address: Av. de Montepíncipe, 25, 28660, Boadilla del Monte, Madrid

Network of private clinics, hospitals and specialized centers distributed throughout Spain.

Related internship programs:

- Palliative Care
- Aesthetic Medicine



Nursing

Hospital HM Torrelodones

Country	City
Spain	Madrid

Address: Av. Castillo Olivares, s/n, 28250, Torrelodones, Madrid

Network of private clinics, hospitals and specialized centers distributed throughout Spain.

Related internship programs:

- Anaesthesiology and Resuscitation
- Palliative Care



Hospital HM Sanchinarro

Country: Spain
City: Madrid

Address: Calle de Oña, 10, 28050, Madrid

Network of private clinics, hospitals and specialized centers distributed throughout Spain.

- Related internship programs:**
- Anaesthesiology and Resuscitation
 - Palliative Care



Hospital HM Nuevo Belén

Country: Spain
City: Madrid

Address: Calle José Silva, 7, 28043, Madrid

Network of private clinics, hospitals and specialized centers distributed throughout Spain.

- Related internship programs:**
- General and Digestive System Surgery
 - Clinical Nutrition in Medicine



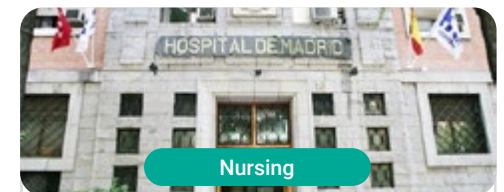
Policlínico HM Distrito Telefónica

Country: Spain
City: Madrid

Address: Ronda de la Comunicación, 28050, Madrid

Network of private clinics, hospitals and specialized centers distributed throughout Spain.

- Related internship programs:**
- Optical Technologies and Clinical Optometry
 - General and Digestive System Surgery



Policlínico HM Gabinete Velázquez

Country: Spain
City: Madrid

Address: C. de Jorge Juan, 19, 1º 28001, Madrid

Network of private clinics, hospitals and specialized centers distributed throughout Spain.

- Related internship programs:**
- Clinical Nutrition in Medicine
 - Aesthetic Plastic Surgery



Nursing

Hospital HM Puerta del Sur

Country	City
Spain	Madrid

Address: Av. Carlos V, 70, 28938, Móstoles, Madrid

Network of private clinics, hospitals and specialized centers distributed throughout Spain.

Related internship programs:

- Palliative Care
- Clinical Ophthalmology



Nursing

Policlínico HM Cruz Verde

Country	City
Spain	Madrid

Address: Plaza de la Cruz Verde, 1-3, 28807, Alcalá de Henares, Madrid

Network of private clinics, hospitals and specialized centers distributed throughout Spain.

Related internship programs:

- Advanced Clinical Podiatry
- Optical Technologies and Clinical Optometry



Nursing

Policlínico HM La Paloma

Country	City
Spain	Madrid

Address: Calle Hilados, 9, 28850, Torrejón de Ardoz, Madrid

Network of private clinics, hospitals and specialized centers distributed throughout Spain.

Related internship programs:

- Advanced Operating Room Nursing
- Orthodontics and Dentofacial Orthopedics



Nursing

Policlínico HM Las Tablas

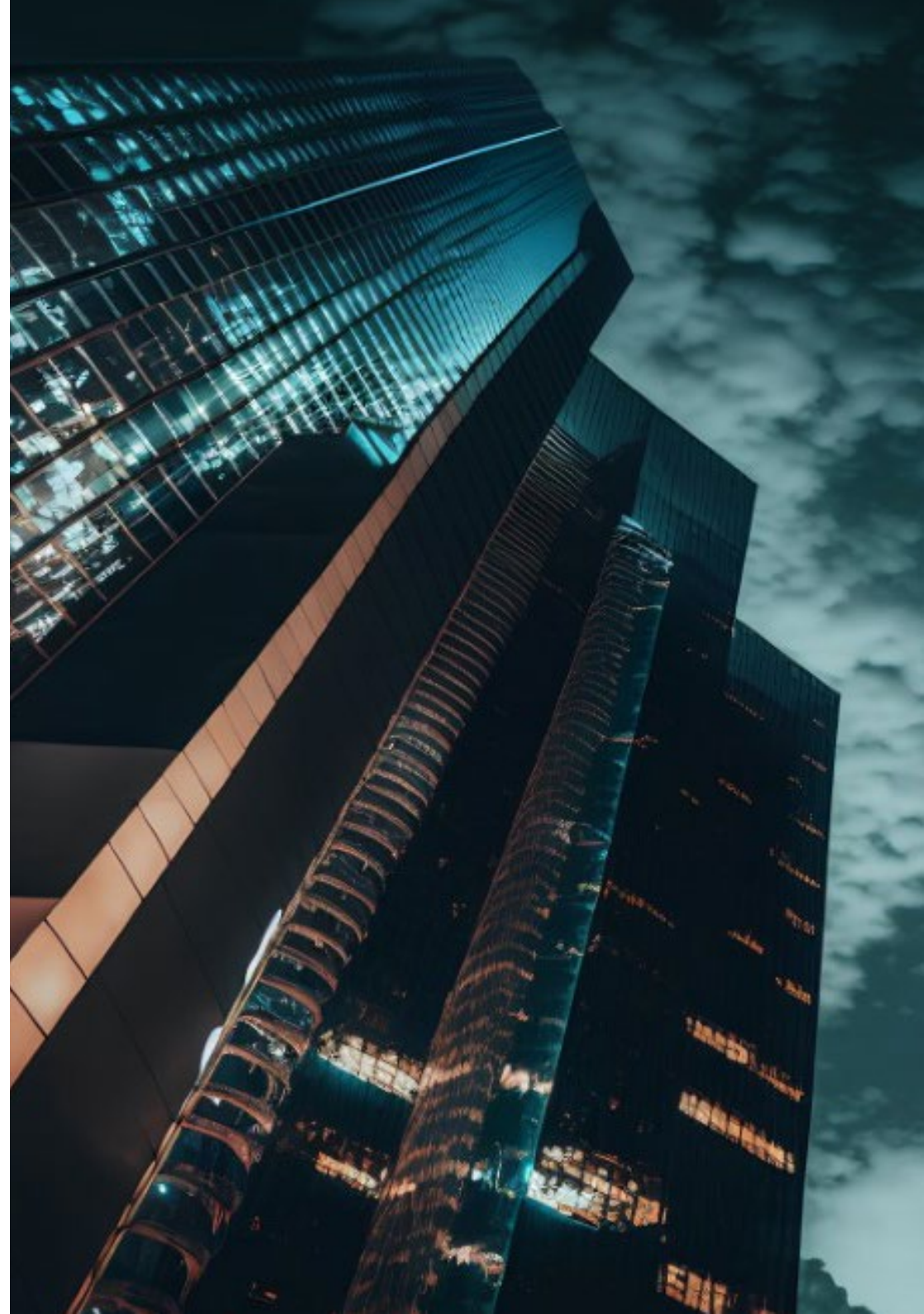
Country	City
Spain	Madrid

Address: C. de la Sierra de Atapuerca, 5, 28050, Madrid

Network of private clinics, hospitals and specialized centers distributed throughout Spain.

Related internship programs:

- Nursing in the Traumatology Department
- Diagnosis in Physiotherapy





Nursing

Policlínico HM Moraleja

Country	City
Spain	Madrid

Address: P.º de Alcobendas, 10, 28109, Alcobendas, Madrid

Network of private clinics, hospitals and specialized centers distributed throughout Spain.

Related internship programs:

- Rehabilitation Medicine in Acquired Brain Injury Management



Nursing

Policlínico HM Sanchinarro

Country	City
Spain	Madrid

Address: Av. de Manoteras, 10, 28050, Madrid

Network of private clinics, hospitals and specialized centers distributed throughout Spain.

Related internship programs:

- Gynecological Care for Midwives
- Nursing in the Digestive Tract Department



Nursing

Policlínico HM Rosaleda Lalín

Country	City
Spain	Pontevedra

Address: Av. Buenos Aires, 102, 36500, Lalín, Pontevedra

Network of private clinics, hospitals and specialized centers distributed throughout Spain.

Related internship programs:

- Advances in Hematology and Hemotherapy
- Neurological Physiotherapy



Nursing

Policlínico HM Imi Toledo

Country	City
Spain	Toledo

Address: Av. de Irlanda, 21, 45005, Toledo

Network of private clinics, hospitals and specialized centers distributed throughout Spain.

Related internship programs:

- Electrotherapy in Rehabilitation Medicine
- Hair Transplantation

09

Methodology

This academic program offers students a different way of learning. Our methodology uses a cyclical learning approach: **Relearning**.

This teaching system is used, for example, in the most prestigious medical schools in the world, and major publications such as the **New England Journal of Medicine** have considered it to be one of the most effective.





“

Discover Relearning, a system that abandons conventional linear learning, to take you through cyclical teaching systems: a way of learning that has proven to be extremely effective, especially in subjects that require memorization"

At TECH Nursing School we use the Case Method

In a given situation, what should a professional do? Throughout the program, students will face multiple simulated clinical cases, based on real patients, in which they will have to do research, establish hypotheses, and ultimately resolve the situation. There is an abundance of scientific evidence on the effectiveness of the method. Nurses learn better, faster, and more sustainably over time.

With TECH, nurses can experience a learning methodology that is shaking the foundations of traditional universities around the world.



According to Dr. Gervas, the clinical case is the annotated presentation of a patient, or group of patients, which becomes a "case", an example or model that illustrates some peculiar clinical component, either because of its teaching power or because of its uniqueness or rarity. It is essential that the case is based on current professional life, in an attempt to recreate the real conditions in professional nursing practice.

“

Did you know that this method was developed in 1912, at Harvard, for law students? The case method consisted of presenting students with real-life, complex situations for them to make decisions and justify their decisions on how to solve them. In 1924, Harvard adopted it as a standard teaching method”

The effectiveness of the method is justified by four fundamental achievements:

1. Nurses who follow this method not only grasp concepts, but also develop their mental capacity, by evaluating real situations and applying their knowledge.
2. The learning process has a clear focus on practical skills that allow the nursing professional to better integrate knowledge acquisition into the hospital setting or primary care.
3. Ideas and concepts are understood more efficiently, given that the example situations are based on real-life.
4. Students like to feel that the effort they put into their studies is worthwhile. This then translates into a greater interest in learning and more time dedicated to working on the course.



Relearning Methodology

At TECH we enhance the case method with the best 100% online teaching methodology available: Relearning.

This university is the first in the world to combine case studies with a 100% online learning system based on repetition combining a minimum of 8 different elements in each lesson, which is a real revolution compared to the simple study and analysis of cases.



The nurse will learn through real cases and by solving complex situations in simulated learning environments. These simulations are developed using state-of-the-art software to facilitate immersive learning.

At the forefront of world teaching, the Relearning method has managed to improve the overall satisfaction levels of professionals who complete their studies, with respect to the quality indicators of the best online university (Columbia University).

With this methodology we have trained more than 175,000 nurses with unprecedented success in all specialities regardless of practical workload. Our pedagogical methodology is developed in a highly competitive environment, with a university student body with a strong socioeconomic profile and an average age of 43.5 years old.

Relearning will allow you to learn with less effort and better performance, involving you more in your specialization, developing a critical mindset, defending arguments, and contrasting opinions: a direct equation to success.

In our program, learning is not a linear process, but rather a spiral (learn, unlearn, forget, and re-learn). Therefore, we combine each of these elements concentrically.

The overall score obtained by TECH's learning system is 8.01, according to the highest international standards.



This program offers the best educational material, prepared with professionals in mind:



Study Material

All teaching material is produced by the specialists who teach the course, specifically for the course, so that the teaching content is really specific and precise.

These contents are then applied to the audiovisual format, to create the TECH online working method. All this, with the latest techniques that offer high quality pieces in each and every one of the materials that are made available to the student.



Nursing Techniques and Procedures on Video

We introduce you to the latest techniques, to the latest educational advances, to the forefront of current medical techniques. All of this in direct contact with students and explained in detail so as to aid their assimilation and understanding. And best of all, you can watch them as many times as you want.



Interactive Summaries

The TECH team presents the contents attractively and dynamically in multimedia lessons that include audio, videos, images, diagrams, and concept maps in order to reinforce knowledge.

This exclusive educational system for presenting multimedia content was awarded by Microsoft as a "European Success Story".



Additional Reading

Recent articles, consensus documents and international guidelines, among others. In TECH's virtual library, students will have access to everything they need to complete their course.





Expert-Led Case Studies and Case Analysis

Effective learning ought to be contextual. Therefore, TECH presents real cases in which the expert will guide students, focusing on and solving the different situations: a clear and direct way to achieve the highest degree of understanding.



Testing & Retesting

We periodically evaluate and re-evaluate students' knowledge throughout the program, through assessment and self-assessment activities and exercises, so that they can see how they are achieving their goals.



Classes

There is scientific evidence suggesting that observing third-party experts can be useful.

Learning from an Expert strengthens knowledge and memory, and generates confidence in future difficult decisions.



Quick Action Guides

TECH offers the most relevant contents of the course in the form of worksheets or quick action guides. A synthetic, practical, and effective way to help students progress in their learning.



10 Certificate

The Hybrid Master's Degree in Gynecological Care for Midwives guarantees students, in addition to the most rigorous and up-to-date education, access to a Professional Master's Degree diploma issued by TECH Global University.



“

Successfully complete this program and receive your university qualification without having to travel or fill out laborious paperwork”

This program will allow you to obtain your **Hybrid Master's Degree diploma in Gynecological Care for Midwives** endorsed by **TECH Global University**, the world's largest online university.

TECH Global University is an official European University publicly recognized by the Government of Andorra ([official bulletin](#)). Andorra is part of the European Higher Education Area (EHEA) since 2003. The EHEA is an initiative promoted by the European Union that aims to organize the international training framework and harmonize the higher education systems of the member countries of this space. The project promotes common values, the implementation of collaborative tools and strengthening its quality assurance mechanisms to enhance collaboration and mobility among students, researchers and academics.

This **TECH Global University** title is a European program of continuing education and professional updating that guarantees the acquisition of competencies in its area of knowledge, providing a high curricular value to the student who completes the program.

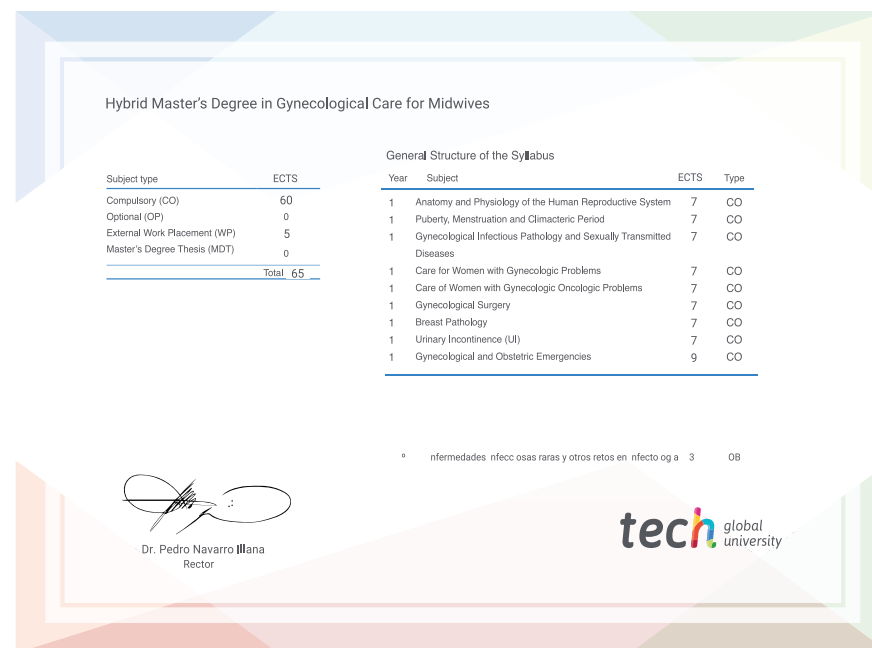
Title: **Hybrid Master's Degree in Gynecological Care for Midwives**

Course Modality: **Hybrid (Online + Clinical Internship)**

Duration: **12 months**

Certificate: **TECH Global University**

Recognition: **60 + 5 ECTS Credits**



*Apostille Convention. In the event that the student wishes to have their paper diploma issued with an apostille, TECH Global University will make the necessary arrangements to obtain it, at an additional cost.

future
health confidence people
education information tutors
guarantee accreditation teaching
institutions technology learning
community commitment
personalized service innovation
knowledge present quality
development languages
classroom



Hybrid Master's Degree Gynecological Care for Midwives

Modality: Hybrid (Online + Clinical Internship)

Duration: 12 months

Certificate: TECH Global University

60 + 5 ECTS Credits

Hybrid Master's Degree

Gynecological Care for Midwives