

Professional Master's Degree

Update on Psychiatry





Professional Master's Degree Update in Psychiatry

Course Modality: Online

Duration: 12 months.

Certificate: TECH Technological University

Official N° of hours: 1,500 h.

Website: www.techtute.com/medicine/professional-master-degree/master-update-psychiatry

Index

01

Introduction

p. 4

02

Objectives

p. 8

03

Skills

p. 12

04

Course Management

p. 16

05

Structure and Content

p. 22

06

Methodology

p. 30

07

Certificate

p. 38

01

Introduction

Psychiatric disorders in people of all ages have truly become a problem for public health on a global level. This situation has become even more problematic after the recent world pandemic, since confinement has dramatically increased the occurrence of disorders such as depression or anxiety, among others. In view of this situation, it is necessary for physicians to update their knowledge in order to take a differential approach to psychiatric disorders.

In this sense, this TECH program will provide professionals with the in-depth knowledge that will allow them to establish innovative treatment strategies for patients with mental health pathologies. These new approaches, will not only highlight the professional profile of the student, but also allow them to have a direct influence on the quality of life of their patients and their families.





“

As stress becomes institutionalized as a way of life, cases of psychiatric disorders are increasing exponentially. Provide a response to this current situation and improve your medical practice with this Professional Master's Degree that TECH offers you”

This Professional Master's Degree that TECH provides for physicians is designed for those health professionals who want to deepen their knowledge of the latest developments in Psychiatry from an eminently clinical perspective. The program will delve into all adult mental disorders following the 11th World Health Organization's Classification of Mental Disorders and the American Psychiatric Association's DSM 5.0.

Mental health illnesses are currently considered a major public health problem, with a great impact on the quality of life of patients and their families. This reality has been accentuated by the COVID-19 pandemic, since the situation of confinement has increased the number of patients visiting the psychiatry department with depression, anxiety, affective disorders, psychosocial disorders and adjustment disorders being the most frequent reasons for consultation.

In view of this, it has become absolutely necessary for physicians who currently work in this area or who want to work in this field to update their knowledge. This will be the only way to offer innovative and personalized treatment for the needs of each patient. Therefore, this TECH program becomes a stronghold for the new generations of physicians, who will find the latest developments in the world of psychiatry in the course. All this, always based on the highest scientific accuracy.

Throughout this Professional Master's Degree, we will address problems such as anxiety which have become a daily reality that can negatively affect the well-being of individuals. These problems are especially prevalent for primary care physicians and require well-managed, early interventions.

In addition, we will also address psychotic disorders, which are prevalent and a very prominent cause of disability. In the face of this reality, we offer an in-depth perspective with special emphasis on the most innovative aspects of treatment.

One of the aspects that makes this Professional Master's Degree exceptional is the theoretical review that is carried out on eating disorders which are a serious problem among young people. In this sense, we will delve into the process created by the interaction of social, cultural and biological factors that lead to this disorder.

This **Professional Master's Degree in Update on Psychiatry** contains the most complete and up-to-date scientific program on the market. The most important features of the program include:

- ♦ Practical cases presented by experts in Medicine and Psychiatry
- ♦ The graphic, schematic, and eminently practical contents with which they are created, provide scientific and practical information on the disciplines that are essential for professional practice
- ♦ Practical exercises where self-assessment can be used to improve learning
- ♦ Special emphasis on innovative methodologies
- ♦ Theoretical lessons, questions to the expert, debate forums on controversial topics, and individual reflection assignments
- ♦ Content that is accessible from any fixed or portable device with an Internet connection



The sector is demanding more and more medical professionals with expertise in this area. Become one of them by studying this Professional Master's Degree"

“

During this Professional Master's Degree we will study disorders as important as anxiety, depression and addictions, as well as other pathologies that have a significant impact on a person's quality of life”

The program's teaching staff includes professionals from sector who contribute their work experience to this program, as well as renowned specialists from leading societies and prestigious universities.

The multimedia content, developed with the latest educational technology, will provide the professional with situated and contextual learning, i.e., a simulated environment that will provide immersive learning programmed to train in real situations.

The design of this program focuses on Problem-Based Learning, by means of which the professional will have to try to solve the different situations of professional practice, which will be posed throughout the program. For this purpose, the professional will be assisted by an innovative system of interactive videos made by recognized experts in personal therapeutic training.

Study from the comfort of your home and update your knowledge online with TECH Technological University, the biggest online university in the world

The pandemic has also increased the number of people with psychiatric disorders. Learn to carry out an innovative approach to these cases by studying this program



02 Objectives

With the aim of providing physicians with in-depth knowledge that will allow them to carry out their work in this field of expertise, TECH has created this Professional Master's Degree which not only includes the best theoretical content, but also an excellent teaching team who will be responsible for imparting the theoretical lessons and teaching students through practical case studies. It is therefore a unique opportunity that will allow professionals to advance in a growing sector and positively contribute to society through new approaches to mental health pathologies, thereby generating a better quality of life for affected individuals.



“

TECH's objective is that you become part of the long list of success stories of graduates from our university”

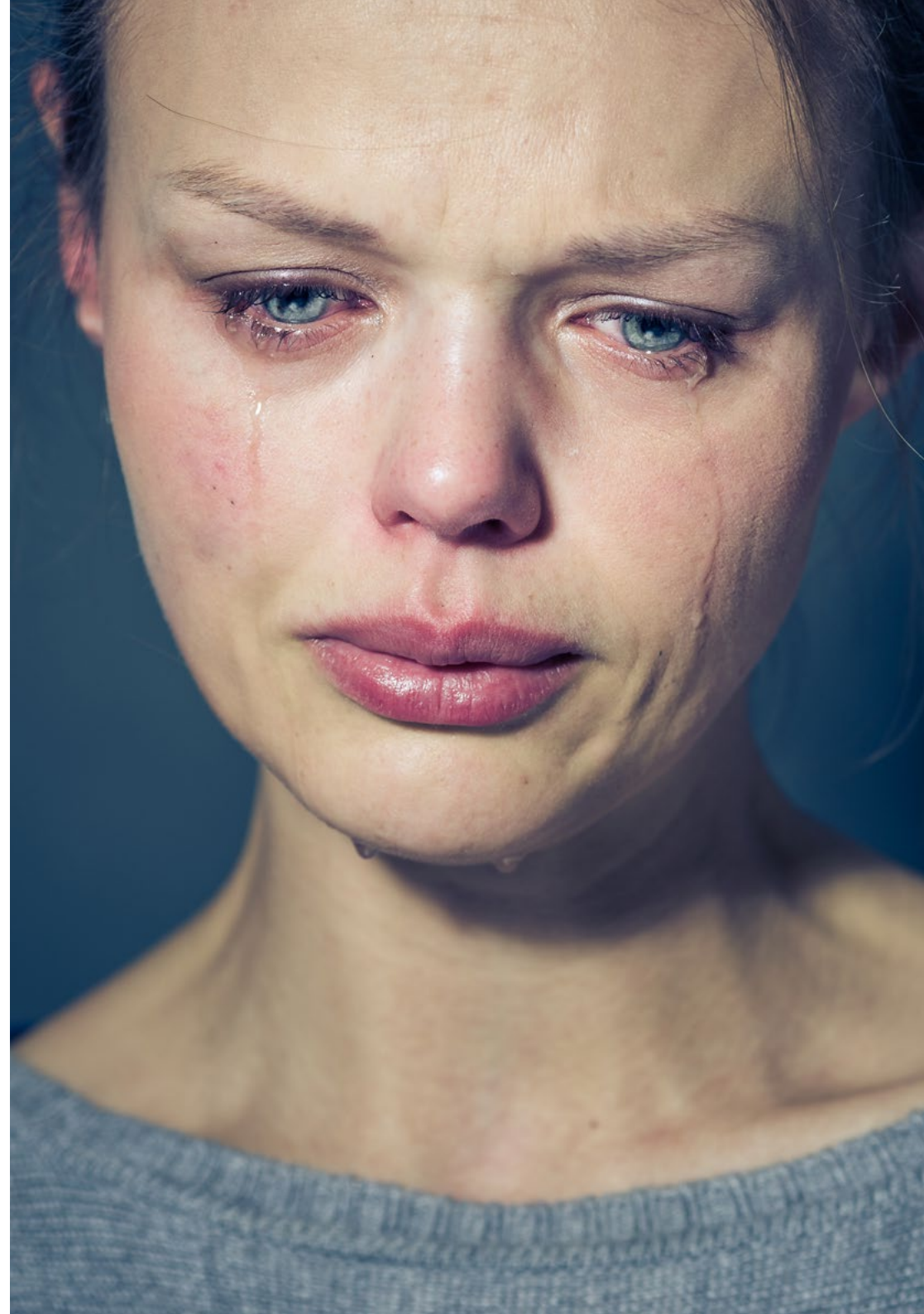


General Objectives

- Improve clinical skills in interviewing, examination and diagnosis in psychiatry
- Provide skills and strategies for clinical management in psychiatry
- Keep physicians' knowledge of new advances in psychiatry up to date
- Master the skills for scientific research in psychiatry
- Improve professional communication skills
- Provide training for leadership in psychiatry
- Know the peculiarities of the development of different specific areas
- Know how to prevent and treat psychiatric epidemiology in the different stages of life
- Gain up-to-date knowledge of the therapeutic strategies in the latest advances in psychiatry
- Approach specific psychiatric problems
- Provide skills and strategies for clinical management in psychiatry



Start to achieve your goals and objectives by studying at TECH





Specific Objectives

Module 1. Schizophrenia and Other Psychotic Disorders

- ♦ Gain in-depth knowledge of the tools for differential diagnosis and the treatments for the main psychotic disorders

Module 2. Mood Disorders

- ♦ Gain in-depth knowledge in order to create a treatment plan for mood disorders

Module 3. Anxiety or Fear-Related Disorders. Disorders Specifically Related to Stress. Dissociative Disorders

- ♦ Gain in-depth knowledge of the correct diagnosis oriented towards treatment
- ♦ Gain in-depth understanding of how anxiety disorders work

Module 4. Obsessive-Compulsive Disorder and Related Disorders

- ♦ Know the evolution of the classifications, as well as the pathophysiological data

Module 5. Eating Disorders

- ♦ Understand how to identify eating disorders early on
- ♦ Gain in-depth knowledge of how to handle this type of disorder

Module 6. Disorders Due to Substance Use or Addictive Behaviors

- ♦ Gain in-depth knowledge of addictions to various substances
- ♦ Update students' knowledge of behavioral addictions

Module 7. Personality Disorders and Related Features

- ♦ Delve into the framework and classifications, as well as the correct formulation of the diagnosis and therapeutic plan

Module 8. Neurocognitive Disorders

- ♦ Know the protocols for correct, early-on diagnosis, insisting on the differential diagnosis of potentially treatable disorders

Module 9. Sleep and Wakefulness Disorders

- ♦ Delve into the physiology of circadian cycles
- ♦ Evaluate the limits of normality and distinguish between primary and secondary sleep disorders

Module 10. Other Disorders

- ♦ Gain an in-depth and exhaustive perspective of mental health disorders

03 Skills

After having passed the assessments in this Professional Master's Degree, the physician will be able to carry out a rigorous and innovative approach to deal with psychiatric disorders such as anxiety, depression or psychotic illnesses. These new treatments that they will be able to carry out will not only position them as a better physician, but will also help them to advance within a growing sector given that mental health disorders are more and more prevalent among the population and are becoming a great social problem.





“

An academic refresher program that will help you to acquire the necessary skills to be a better physician”



General Skills

- ♦ Master the necessary tools to practice psychiatry from an up-to-date perspective that takes into account the new perspectives of the profession
- ♦ Apply the acquired knowledge and problem-solving skills in current and global environments within broader and more complex clinical contexts
- ♦ Be capable of integrating knowledge and gaining an in-depth vision of the different types of psychiatric disorders that a patient could suffer from
- ♦ Know how to correctly diagnose each type of disorder in function with its symptoms
- ♦ Understand and internalize the extent of psychiatric disorders and their impact on today's society
- ♦ Be able to perform a critical analysis, evaluation and synthesis of new and complex ideas related to the field of applied psychiatry
- ♦ Be able to promote progress in the treatment of psychiatric disorders in professional contexts



If what you are looking for is to improve as a physician and have a direct impact on the quality of life of individuals, then this is the program for you”





Specific Skills

- ♦ Be able to understand and work with different psychiatric disorders such as schizophrenia, delusional disorder or acute delusional disorder, among others
- ♦ Gain in-depth knowledge of the main changes in the evolution of the concept and therapeutic developments in mood disorders
- ♦ Know how to recognize anxiety disorders and work with them from primary care
- ♦ Know all the characteristics of Obsessive-Compulsive Disorder and know how to treat it effectively
- ♦ Gain in-depth knowledge of the cultural, biological and social factors which have a direct effect on eating disorders
- ♦ Gain in-depth knowledge of the characteristics of different addictions that an individual could present
- ♦ Know the features related to personality disorders
- ♦ Know how to apply the protocols for a correct early diagnosis of neurocognitive disorders
- ♦ Understand the physiology of circadian cycles, evaluating the normal limits
- ♦ Acquire an in-depth and up-to-date perspective of eating disorders

04

Course Management

For this program, TECH has assembled a teaching staff made up of active experts in the fields of medicine, psychology and psychiatry who contribute their experience of many years working in this sector to this Professional Master's Degree. Professionals from other related areas have also participated in the creation of the contents of this degree, completing the program in an interdisciplinary and comprehensive way, giving the Professional Master's Degree unique characteristics that the student will not be able to find anywhere else.





“

An exceptional teaching team will be in charge of providing you with all the knowledge you need to grow in your profession. Don't miss this opportunity”

Management



Dr. Baca García, Enrique

- ♦ Head of the Department of Psychiatry at the Jiménez Díaz Foundation
- ♦ Professor of Psychiatry. Department of Psychiatry. Faculty of Medicine. Autonomous University of Madrid
- ♦ Degree in Medicine and Surgery from the Autonomous University of Madrid
- ♦ PhD in Medicine and Surgery from the University of Alcalá
- ♦ Specialist in Psychiatry
- ♦ Postdoctoral Research Fellow. Columbia University College of Physicians & Surgeons



Dr. Barrigón Estevez, María Luisa

- ♦ Attending Physician in the Psychiatric Department in the JDF Health Research Institute Foundation
- ♦ Degree in Medicine and Surgery from the University of Extremadura
- ♦ Specialist in Psychiatry with training completed in the Clinical University Hospital of Granada
- ♦ Official PhD program in Psychiatry from the University of Granada

Professors

Dr. Álvarez García, Raquel

- ♦ Associate Head of Psychiatry at the HURJ
- ♦ Associate Professor of Medicine, Rey Juan Carlos University (URJC)
- ♦ PhD from the Autonomous University of Madrid
- ♦ Degree in Medicine from the Autonomous University Madrid
- ♦ Specialist in Psychiatry, Internal Medical Resident at the Jiménez Díaz foundation
- ♦ Specialist Course in Mental Health Emergencies
- ♦ Diploma of Higher Training in Psychotherapy at the Autonomous University of Madrid

Ms. Albarracín García, Lucía

- ♦ Psychiatry Department at the Jiménez Díaz Foundation
- ♦ Degree in Psychology from the Complutense University Madrid
- ♦ Master's Degree in General Health Psychology from the Complutense University of Madrid
- ♦ Course on Long-term Prognostic Factors of Psychiatric Disorders Beginning in Childhood and Adolescence from the Alicia Koplowitz Foundation

Dr. Guerrero Jiménez, Margarita

- ♦ Psychiatry Faculty Area Specialist in Virgen de las Nieves Hospital
- ♦ Clinical tutor of students from the Degree in Medicine at the University of Granada
- ♦ Degree in Medicine from the University of Granada
- ♦ Master's Degree in Neuroscience and Pain from the University of Granada
- ♦ Master's Degree in Third Generation Psychotherapy from the International University of Valencia
- ♦ Postgraduate Diploma in Affective Disorders from the University of Alcalá de Henares

Dr. Carrillo de Albornoz Calahorro, Carmen Maura

- ♦ Health Faculty Specialist in the Psychiatric department of the Andalusian Health Service (Virgen de las Nieves Hospital)
- ♦ Degree in Medicine from the University of Córdoba
- ♦ Postgraduate Diploma in ADHD Throughout Life from the Autonomous University of Alcalá de Henares
- ♦ Postgraduate Diploma in Mental Health from the Autonomous University of Alcalá de Henares
- ♦ Postgraduate Diploma in Affective Disorders from the Autonomous University of Alcalá de Henares

Dr. Brañas González, Antía

- ♦ Medical specialist in Psychiatry in the Ourense Hospital Complex
- ♦ Experience in clinical work in different public and private centers
- ♦ PhD in Health Sciences from the University of Alcalá
- ♦ Degree in Medicine and Surgery from the University of Santiago de Compostela
- ♦ Diploma of Advanced Studies from the University of Granada

Dr. García Román, Cristina

- ♦ Faculty Specialist in Psychiatric Department in UHSM at the Clinical Hospital of San Cecilio
- ♦ Degree in Medicine and Surgery from the University of Granada
- ♦ Master's Degree in Psychopathology and Health from the National University of Remote Education General Foundation UNED
- ♦ Postgraduate Diploma in Psychopathology and Health from the National University of Remote Education. General Foundation UNED

Dr. Gota, José Miguel

- ♦ Intensive Community Treatment Team to be implemented in the Mental Health Clinical Management Unit of the San Cecilio University Hospital in Granada
- ♦ Physician in Community Mental Health Units, caring for the adult population
- ♦ Degree in Medicine from the University of Zaragoza
- ♦ Psychiatry specialist in the Southern Health Management Area of Granada-Basic General Hospital of Motril

Dr. Peñuelas Calvo, Inmaculada

- ♦ Specialist in the Psychiatry Department at the Jiménez Díaz Foundation
- ♦ Associate Professor of Health Sciences at the Complutense University of Madrid
- ♦ Degree in Medicine from the University of Zaragoza
- ♦ Master's Degree in Autism from the University of San Jorge
- ♦ Master's Degree in Systemic Family Therapy from the Autonomous University of Barcelona
- ♦ Master's Degree in Clinical Practice in Child and Adolescent Psychiatry from the University of Barcelona
- ♦ Postgraduate Diploma in Bipolar Disorder from the University of Barcelona
- ♦ Postgraduate Diploma in Child and Adolescent Psychiatry from the University of Barcelona

Dr. Izaguirre Gamir, Leire

- ♦ 4th year Internal Medicine Resident in the Psychiatry at Jiménez Díaz Foundation University Hospital
- ♦ Degree in Medicine and Surgery from the San Pablo TECH University of Madrid
- ♦ Master's Degree in Psychotherapy, Integrated Perspective from the University of Alcalá Henares

Dr. Porras Segovia, Alejandro

- ♦ Clinical researcher in the Health Research Institute of the Jiménez Díaz Foundation
- ♦ Degree in Medicine and Surgery from the University of Granada
- ♦ Official PhD program in Clinical Medicine and Public Health from the University of Granada
- ♦ Postgraduate Diploma in Affective Disorders from the University of Alcalá
- ♦ Postgraduate Diploma in Emergencies in Mental Health from the University of Alcalá

Dr. De Granda Beltrán, Ana María

- ♦ Faculty Specialist in the JDF Health Research Institute Foundation
- ♦ Suicidal Behavior Prevention and Treatment Consultation at Moncloa Mental Health Center
- ♦ Degree in Medicine from the Complutense University of Madrid
- ♦ Master's Degree in Legal Psychiatry from the Complutense University of Madrid

Dr. González Rodríguez, Teresa

- ♦ Psychiatric Consultant in the Psychiatry and Psychology Center, Plaza España
- ♦ Psychiatry Consultant in the Averroes Medical Center
- ♦ Degree in Medicine from the University of Seville
- ♦ Master's Degree in Clinical Medicine from the Camilo José Cela University
- ♦ Master's Degree in Legal Psychiatry from the Complutense University of Madrid



Dr. Pérez Fominaya, Margarita

- ◆ Attending Physician in External Consultations at the Nuestra del Prado Hospital - Head of the Psychogeriatric Program
- ◆ Attending Physician at the San José Institute Foundation Head of Psychiatry Interconsultation
- ◆ Degree in Medicine and Surgery from the Complutense University of Madrid
- ◆ Postgraduate Diploma in Mental Health from the University of Alcalá de Henares
- ◆ Postgraduate Diploma in Psychoanalytical Psychotherapy and Clinical Management from the Pontificia Comillas University
- ◆ Postgraduate Diploma in ADHD Throughout Life from the University of Alcalá de Henares

Ms. Pérez Colmenero, Sonia

- ◆ Faculty specialist in Clinical Psychology in a child and adolescent mental health center at the Jiménez Diaz Foundation University Hospital
- ◆ Degree in Psychology from the University of Santiago de Compostela
- ◆ Master's Degree in Child and Adolescent Clinical Psychology
- ◆ Early Care Course through continued distance learning program
- ◆ Course on Psychiatry During and After the COVID-19 Health Crisis

05

Structure and Content

The structure and content of this program have been designed based on the requirements of the latest generation of medicine, always guaranteeing the highest level of scientific accuracy. In this way, the student will have access to both a theoretical and practical syllabus which will provide them with a global learning experience, allowing them to gain in-depth and up-to-date knowledge of psychiatric disorders and their most effective treatments. Furthermore, these contents will become an authentic guide for the student while they carry out their professional activities.



“

With TECH you will have the possibility to access the best content without having to move from your house”

Module 1. Schizophrenia and Other Psychotic Disorders

- 1.1. Epidemiology
 - 1.1.1. Risk Factors
 - 1.1.2. Etiopathogenesis of Psychosis
- 1.2. Classification
- 1.3. Schizophrenia
 - 1.3.1. Clinical Characteristics
- 1.4. Schizoaffective Disorder
 - 1.4.1. Clinical Characteristics
- 1.5. Schizotypal Disorder
 - 1.5.1. Clinical Characteristics
- 1.6. Acute and Transitory Psychotic Disorder
 - 1.6.1. Clinical Characteristics
- 1.7. Delusional Disorder
 - 1.7.1. Clinical Characteristics
- 1.8. Assessment and Diagnosis
- 1.9. Differential Diagnosis
- 1.10. Treatment

Module 2. Mood Disorders

- 2.1. Bipolar Disorders
 - 2.1.1. Epidemiology
 - 2.1.2. Risk Factors
 - 2.1.3. Etiopathogenesis
- 2.2. Bipolar Disorders
 - 2.2.1. Classification
 - 2.2.1.1. Clinical Characteristics
 - 2.2.1.2. Type I Bipolar Disorder
 - 2.2.1.3. Type II Bipolar Disorder
 - 2.2.2. Cyclothymia



- 2.3. Bipolar Disorders
 - 2.3.1. Assessment
 - 2.3.1.1 Diagnosis
 - 2.3.2. Differential Diagnosis
- 2.4. Bipolar Disorders
 - 2.4.1. Evolution
 - 2.4.2. Prognosis
- 2.5. Bipolar Disorders
 - 2.5.1. Treatment
- 2.6. Depressive Disorders
 - 2.6.1. Epidemiology
 - 2.6.1.1. Risk Factors
 - 2.6.2. Etiopathogenesis
- 2.7. Depressive Disorders
 - 2.7.1. Classification
 - 2.7.2. Clinical Characteristics
 - 2.7.2.1. Depressive Disorder, Single Episode
 - 2.7.2.2. Recurring Depressive Disorder
 - 2.7.2.3. Dysthymic Disorder
 - 2.7.2.4. Mixed Anxiety and Depression Disorder
 - 2.7.3. Premenstrual Dysphoric Disorder
- 2.8. Depressive Disorders
 - 2.8.1. Assessment
 - 2.8.1.1. Diagnosis
 - 2.8.2. Differential Diagnosis
- 2.9. Depressive Disorders
 - 2.9.1. Evolution
 - 2.9.2. Prognosis
- 2.10. Depressive Disorders
 - 2.10.1. Treatment



Module 3. Anxiety or Fear-Related Disorders. Disorders Specifically Related to Stress. Dissociative Disorders

- 3.1. Anxiety or Fear-Related Disorders
 - 3.1.1. Epidemiology
 - 3.1.2. Risk Factors
 - 3.1.3. Etiopathogenesis
- 3.2. Anxiety or Fear-Related Disorders
 - 3.2.1. Classification
 - 3.2.2. Clinical Characteristics
- 3.3. Anxiety or Fear-Related Disorders
 - 3.3.1. Assessment
 - 3.3.2. Diagnosis
 - 3.3.3. Differential Diagnosis
- 3.4. Anxiety or Fear-Related Disorders
 - 3.4.1. Treatment
- 3.5. Disorders Specifically Related to Stress
 - 3.5.1. Classification
 - 3.5.2. Clinical Characteristics
- 3.6. Disorders Specifically Related to Stress
 - 3.6.1. Assessment
 - 3.6.2. Diagnosis
 - 3.6.3. Differential Diagnosis
- 3.7. Disorders Specifically Related to Stress
 - 3.7.1. Treatment
- 3.8. Dissociative Disorders
 - 3.8.1. Classification
 - 3.8.2. Clinical Characteristics

- 3.9. Dissociative Disorders
 - 3.9.1. Assessment
 - 3.9.2. Diagnosis
 - 3.9.3. Differential Diagnosis
- 3.10. Dissociative Disorders
 - 3.10.1. Treatment
 - 3.10.2. Prognosis

Module 4. Obsessive-Compulsive Disorder and Related Disorders

- 4.1. Obsessive-Compulsive Disorder
 - 4.1.1. Epidemiology
 - 4.1.2. Risk Factors
 - 4.1.3. Etiopathogenesis
- 4.2. Obsessive-Compulsive Disorder
 - 4.2.1. Assessment
 - 4.2.2. Diagnosis
 - 4.2.3. Differential Diagnosis
- 4.3. Obsessive-Compulsive Disorder
 - 4.3.1. Treatment
 - 4.3.2. Prognosis
- 4.4. Body Dysmorphic Disorder
 - 4.4.1. Epidemiology
 - 4.4.2. Risk Factors
 - 4.4.3. Etiopathogenesis
- 4.5. Body Dysmorphic Disorder
 - 4.5.1. Assessment
 - 4.5.2. Diagnosis
 - 4.5.3. Differential Diagnosis
- 4.6. Body Dysmorphic Disorder
 - 4.6.1. Treatment
 - 4.6.2. Prognosis



- 4.7. Hypochondriasis
 - 4.7.1. Epidemiology
 - 4.7.2. Risk Factors
 - 4.7.3. Etiopathogenesis
- 4.8. Hypochondriasis
 - 4.8.1. Assessment
 - 4.8.2. Diagnosis
 - 4.8.3. Differential Diagnosis
- 4.9. Hypochondriasis
 - 4.9.1. Treatment
 - 4.9.2. Prognosis
- 4.10. Other Disorders
 - 4.10.1. Olfactory Reference Disorder
 - 4.10.2. Hoarding Disorder
 - 4.10.3. Body-Centered Repetitive Behavior Disorders

Module 5. Eating Disorders

- 5.1. Epidemiology
 - 5.1.1. Risk Factors
 - 5.1.2. Etiological Factors
- 5.2. Classification
- 5.3. Anorexia
 - 5.3.1. Clinical Characteristics
- 5.4. Bulimia
 - 5.4.1. Clinical Characteristics
- 5.5. Binge Eating Disorder
 - 5.5.1. Clinical Pathologies
- 5.6. Assessment
 - 5.6.1. Diagnosis
 - 5.6.2. Differential Diagnosis

- 5.7. Medical Aspects of Assertive Community Treatment
 - 5.7.1. Medical Complications
 - 5.7.2. Medical Assessment
 - 5.7.3. Analytical Results
- 5.8. Medical Treatment
- 5.9. Psychotherapeutic treatment
- 5.10. Other Specific Eating Disorders
 - 5.10.1. Avoidant or Restrictive Eating Disorder
 - 5.10.2. PICA Syndrome
 - 5.10.3. Rumination or Regurgitation Disorder

Module 6. Disorders Due to Substance Use or Addictive Behaviors

- 6.1. Disorders Due to Alcohol Consumption
- 6.2. Disorders Due to Cannabis Consumption
- 6.3. Disorders Due to Opioids Consumption
 - 6.3.1. Heroin
 - 6.3.2. Opioids Subject to Medical Prescription
- 6.4. Disorders Due to Cocaine Consumption
- 6.5. Disorders Due to Stimulants Consumption
- 6.6. Other Drugs
 - 6.6.1. Synthetic Cathinones
 - 6.6.2. Hallucinogens
 - 6.6.3. MDMA
 - 6.6.4. Dissociative Drugs (PCP and Ketamine)
 - 6.6.5. Inhalants
- 6.7. Disorders Due to Sedatives Consumption
 - 6.7.1. Hypnotics
 - 6.7.2. Anxiolytics
- 6.8. Disorders Due to Nicotine Consumption
- 6.9. Disorders Due to Caffeine Consumption
- 6.10. Disorders Due to Addictive Behavior
 - 6.10.1. Betting Disorders
 - 6.10.2. Disorders Due to Video Game Use

Module 7. Personality Disorders and Related Features

- 7.1. Theories of Personality
- 7.2. Personality: Traits Versus Disorder
- 7.3. Classifications of Personality Disorders
- 7.4. Epidemiology
- 7.5. Etiopathogenesis
- 7.6. Clinical Forms
- 7.7. Emotional Instability Disorder
- 7.8. Comorbidities in Personality Disorders
- 7.9. Evaluation, Diagnosis and Differential Diagnosis
 - 7.9.1. Diagnosis
 - 7.9.2. Differential Diagnosis
- 7.10. Treatment

Module 8. Neurocognitive Disorders

- 8.1. Classification
- 8.2. Delirium: Epidemiology
 - 8.2.1. Risk Factors
 - 8.2.2. Etiopathogenesis
- 8.3. Delirium: Evaluation
 - 8.3.1. Diagnosis
 - 8.3.2. Differential Diagnosis
- 8.4. Delirium: Treatment
 - 8.4.1. Non-Pharmacological
 - 8.4.2. Pharmacological
- 8.5. Dementia
 - 8.5.1. Common Aspects
- 8.6. Dementia Due to Alzheimer's Disease
- 8.7. Dementia Due to Cerebrovascular Disease
- 8.8. Dementia Due to Lewy's Disease
- 8.9. Frontotemporal Dementia
- 8.10. Other Specified Neurocognitive Disorders
 - 8.10.1. Mild Neurocognitive Disorder
 - 8.10.2. Amnesic Disorder
 - 8.10.3. Secondary Neurocognitive Syndrome

Module 9. Sleep and Wakefulness Disorders

- 9.1. Normal Sleep
 - 9.1.1. Basic Aspects
- 9.2. Diagnostic Assessment
- 9.3. Classification of Sleep and Wakefulness Disorders
- 9.4. Insomnia
 - 9.4.1. Clinical Symptoms
 - 9.4.2. Assessment
- 9.5. Insomnia
 - 9.5.1. Medical Treatment
- 9.6. Insomnia
 - 9.6.1. Non-Pharmacological Treatment
- 9.7. Hypersomnia Disorders
- 9.8. Disorders of the Circadian Rhythm of Sleep and Wakefulness
- 9.9. Parasomnia Disorders
- 9.10. Monitoring Sleep

Module 10. Other Disorders

- 10.1. Catatonia
- 10.2. Impulse Control Disorder
- 10.3. Factitious Disorder
- 10.4. Mental or Behavioral Disorders Associated with Pregnancy
 - 10.4.1. Birth
 - 10.4.2. Post-Partum
- 10.5. Paraphilic Disorders
- 10.6. Sexual Dysfunctions
- 10.7. Attention Deficit Hyperactivity Disorder
 - 10.7.1. Hyperactivity
- 10.8. Gender Conflict
- 10.9. Psychological or Behavioral Factors that Affect Illnesses or Diseases Classified in Another Area
- 10.10. Secondary Mental Health or Behavioral Syndromes Associated With Illnesses or Disorders Classified in Another Area



*Become a better specialist
physician in psychiatry by
studying this course”*

06

Methodology

This program provides you with a different way of learning. Our methodology uses a cyclical learning approach: **Relearning**.

This teaching system is used, for example, in the most prestigious medical schools in the world, and major publications such as the **New England Journal of Medicine** have considered it to be one of the most effective.



“

Discover Relearning, a system that abandons conventional linear learning, to take you through cyclical teaching systems: a way of learning that has proven to be extremely effective, especially in subjects that require memorization"

At TECH we use the Case Method

What should a professional do in a given situation? Throughout the program, students will face multiple simulated clinical cases, based on real patients, in which they will have to do research, establish hypotheses, and ultimately resolve the situation. There is an abundance of scientific evidence on the effectiveness of the method. Specialists learn better, faster, and more sustainably over time.

With TECH you will experience a way of learning that is shaking the foundations of traditional universities around the world



According to Dr. Gervas, the clinical case is the annotated presentation of a patient, or group of patients, which becomes a "case", an example or model that illustrates some peculiar clinical component, either because of its teaching power or because of its uniqueness or rarity. It is essential that the case is based on current professional life, trying to recreate the real conditions in the physician's professional practice.

“

Did you know that this method was developed in 1912, at Harvard, for law students? The case method consisted of presenting students with real-life, complex situations for them to make decisions and justify their decisions on how to solve them. In 1924, Harvard adopted it as a standard teaching method”

The effectiveness of the method is justified by four fundamental achievements:

1. Students who follow this method not only achieve the assimilation of concepts, but also a development of their mental capacity, through exercises that evaluate real situations and the application of knowledge.
2. Learning is solidly translated into practical skills that allow the student to better integrate into the real world.
3. Ideas and concepts are understood more efficiently, given that the example situations are based on real-life.
4. Students like to feel that the effort they put into their studies is worthwhile. This then translates into a greater interest in learning and more time dedicated to working on the course.



Relearning Methodology

At TECH we enhance the Harvard case method with the best 100% online teaching methodology available: Relearning.

This university is the first in the world to combine the study of clinical cases with a 100% online learning system based on repetition, combining a minimum of 8 different elements in each lesson, a real revolution with respect to the mere study and analysis of cases.



Professionals will learn through real cases and by resolving complex situations in simulated learning environments. These simulations are developed using state-of-the-art software to facilitate immersive learning

At the forefront of world teaching, the Relearning method has managed to improve the overall satisfaction levels of professionals who complete their studies, with respect to the quality indicators of the best online university (Columbia University).

With this methodology, more than 250.000 physicians have been trained with unprecedented success in all clinical specialties regardless of surgical load. Our pedagogical methodology is developed in a highly competitive environment, with a university student body with a strong socioeconomic profile and an average age of 43.5 years old.

*Relearning will allow you to learn with less effort
and better performance, involving you more in
your specialization, developing a critical mindset,
defending arguments, and contrasting opinions:
a direct equation to success*

In our program, learning is not a linear process, but rather a spiral (learn, unlearn, forget, and re-learn). Therefore, we combine each of these elements concentrically.

The overall score obtained by TECH's learning system is 8.01, according to the highest international standards.



This program offers the best educational material, prepared with professionals in mind:



Study Material

All teaching material is produced by the specialists who teach the course, specifically for the course, so that the teaching content is highly specific and precise.

These contents are then applied to the audiovisual format, to create the TECH online working method. All this, with the latest techniques that offer high quality pieces in each and every one of the materials that are made available to the student.



Surgical Techniques and Procedures on Video

TECH introduces students to the latest techniques, the latest educational advances and to the forefront of current medical techniques. All of this in direct contact with students and explained in detail so as to aid their assimilation and understanding. And best of all, you can watch the videos as many times as you like.



Interactive Summaries

The TECH team presents the contents attractively and dynamically in multimedia lessons that include audio, videos, images, diagrams, and concept maps in order to reinforce knowledge.

This exclusive multimedia content presentation system was awarded by Microsoft as a "European Success Story".



Additional Reading

Recent articles, consensus documents and international guidelines, among others. In TECH's virtual library, students will have access to everything they need to complete their course.





Expert-Led Case Studies and Case Analysis

Effective learning ought to be contextual. Therefore, TECH presents real cases in which the expert will guide students, focusing on and solving the different situations: a clear and direct way to achieve the highest degree of understanding.



Testing & Retesting

We periodically evaluate and re-evaluate students' knowledge throughout the program, through assessment and self-assessment activities and exercises: so that they can see how they are achieving their goals.



Classes

There is scientific evidence on the usefulness of learning by observing experts: The system termed Learning from an Expert strengthens knowledge and recall capacity, and generates confidence in the face of difficult decisions in the future.



Quick Action Guides

TECH offers the most relevant contents of the course in the form of worksheets or quick action guides. A synthetic, practical, and effective way to help students progress in their learning.



07 Certificate

The Professional Master's Degree in Update on Psychiatry guarantees students, in addition to the most rigorous and up-to-date education, access to a Professional Master's Degree issued by TECH Technological University.



“

Successfully complete this program and receive your university diploma without travel or laborious paperwork"

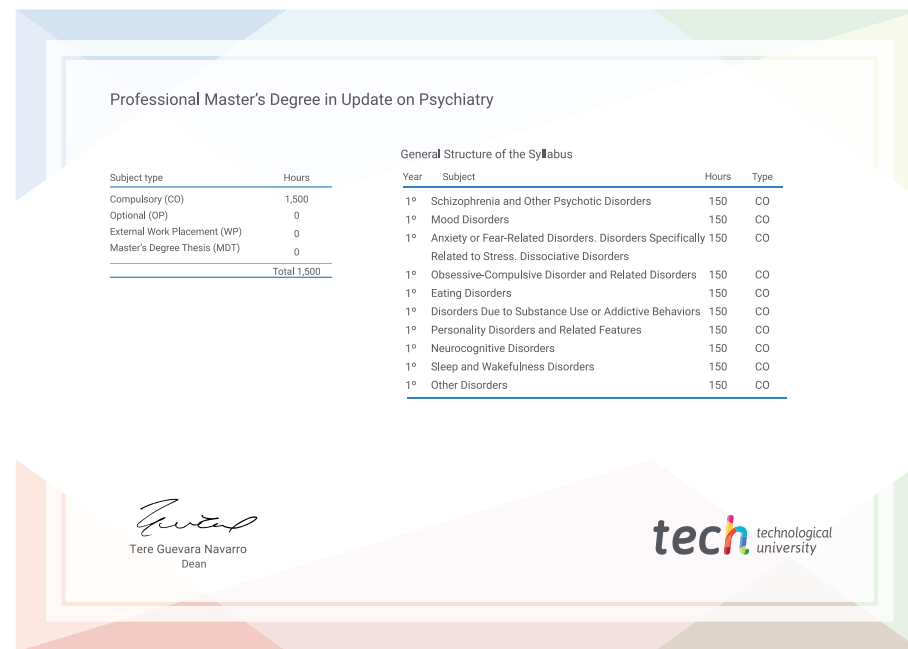
This **Professional Master's Degree in Update on Psychiatry** contains the most complete and up-to-date scientific program on the market.

After the student has passed the assessments, they will receive their corresponding **Professional Master's Degree** diploma issued by **TECH Technological University** via tracked delivery*.

The diploma issued by **TECH Technological University** will reflect the qualification obtained in the Professional Master's Degree, and meets the requirements commonly demanded by labor exchanges, competitive examinations, and professional career evaluation committees.

Title: **Professional Master's Degree in Update on Psychiatry**

Official N° of hours: **1,500 h.**



*Apostille Convention. In the event that the student wishes to have their paper diploma issued with an apostille, TECH EDUCATION will make the necessary arrangements to obtain it, at an additional cost.

future
health confidence people
education information tutors
guarantee accreditation teaching
institutions technology learning
community commitment
personalized service innovation
knowledge present quality
development language
classroom



Professional Master's Degree

Update in Psychiatry

Course Modality: Online

Duration: 12 months.

Certificate: TECH Technological University

Official N° of hours: 1,500 h.

Professional Master's Degree

Update on Psychiatry

