

Postgraduate Diploma

Major Syndromes in Psychiatric Emergencies



Postgraduate Diploma Major Syndromes in Psychiatric Emergencies

- » Modality: online
- » Duration: **6 months**
- » Certificate: TECH Technological University
- » Dedication: 16h/week
- » Schedule: at your own pace
- » Exams: online

Website: www.techtute.com/pk/medicine/postgraduate-diploma/postgraduate-diploma-major-syndromes-psychiatric-emergencies

Index

01

Introduction

p. 4

02

Objectives

p. 8

03

Course Management

p. 12

04

Structure and Content

p. 16

05

Methodology

p. 20

06

Certificate

p. 28

01

Introduction

Anxiety problems and depressive disorders are frequent reasons for consultation in the emergency department, either as a first visit, or due to relapses or adjustment of previous treatment. A correct initial evaluation of the patient will be decisive to obtain an accurate diagnosis and apply the most appropriate treatment. This 100% online program allows the medical professionals to renew their knowledge in the anamnesis for this type of cases that require psychiatric urgency, as well as the latest advances in the treatments to be applied. The teaching team specialized in this area will provide an eminently practical approach to this university education.





“

A university program that will allow you to deepen in psychiatric emergencies through a broad and modern multimedia content"

This Postgraduate Diploma, taught by a highly qualified teaching team with extensive experience in the area of psychiatric emergencies, will provide the health professionals with a specialization with an updated knowledge and at the academic forefront in the field of the major syndromes. Throughout the 6 months of duration of this university program, the teaching staff will pour all their knowledge in this field so that the students reach a deeper understanding in detail of mental illnesses, which are a serious health problem all over the world.

The medical professionals who seek to broaden their knowledge in this health area will delve into the main syndromes that may be found in a psychiatric emergency such as anxiety, depression, psychosis or schizophrenia. The importance of somatic diseases, which may underlie certain clinical pictures, both in terms of frequency and importance, makes a constant renewal of knowledge necessary. This will be possible in this university program thanks to the practical cases presented by the teaching staff, experts in psychiatric emergencies.

Likewise, this university program will provide medical personnel with the most recent treatments applied to patients who come to the psychiatric emergency room for a correct evaluation, accurate diagnosis and treatment to be applied based on recent scientific studies. An excellent opportunity to keep abreast of the latest techniques used with a flexible program, which allows the professionals to access without fixed schedules to all the content of the syllabus and its extensive library of multimedia resources in which, in an attractive way, you can update your knowledge in the field of psychiatric emergencies.

This **Postgraduate Diploma in Major Syndromes in Psychiatric Emergencies** contains the most complete and up-to-date scientific program on the market.

The most important features include:

- ♦ Case studies presented by experts in Psychiatric Emergencies
- ♦ Graphic, schematic, and practical contents with which they are created, provide scientific and practical information on the disciplines that are essential for professional practice
- ♦ Practical exercises where the self-assessment process can be carried out to improve learning
- ♦ Its special emphasis on innovative methodologies
- ♦ Theoretical lessons, questions to the expert, debate forums on controversial topics, and individual reflection assignments
- ♦ Content that is accessible from any fixed or portable device with an Internet connection



This online training provides you with a renewal of your knowledge in the causes of secondary depression and its management"

“

With this Postgraduate Diploma you will be aware of all the advances that have been made in diagnosis and pharmacological treatments for patients with anxiety”

The program's teaching staff includes professionals in the sector who contribute their work experience to this training program, as well as renowned specialists from leading societies and prestigious universities.

Its multimedia content, developed with the latest educational technology, will provide the professionals with situated and contextual learning, i.e., a simulated environment that will provide an immersive education programmed to learn in real situations.

This program is designed around Problem-Based Learning, whereby the professionals must try to solve the different professional practice situations that arise throughout the program. For this purpose, the students will be assisted by an innovative interactive video system created by renowned experts.

Delve into this Postgraduate Diploma in the differential diagnosis of psychosis.

Delve into the treatments currently used for elderly or pregnant patients with psychotic disorders.



02 Objectives

This Postgraduate Diploma delves into the major syndromes in psychiatric emergencies, providing students with a deep and recent knowledge on nosological entities and their approach in clinical consultation, as well as the latest techniques applied in decision making depending on the origin, severity, risks and social support available to the patient. Likewise, the students will reach a renewed knowledge about affective and psychotic disorders with a Relearning system, which favors the foundation of concepts in a more agile way and reducing long hours of study.





“

This Postgraduate Diploma will provide you with the latest psychotherapeutic guidelines applied in psychiatric emergencies"



General Objectives

- ♦ Delve into emergency psychiatric care in an integrated manner within the health care setting
- ♦ Delve into the psychiatric interview in emergency medicine and the elaboration of medical histories in this area of care
- ♦ Correctly establish a diagnostic approach in the emergency department, organicity screening and approach to psychiatric pathology
- ♦ Understand and master the different pathologies that are treated in the emergency department, differential diagnosis and treatment
- ♦ Handle different emergency situations in psychiatry: suicidal patients, affective disorders, emergencies in anxious and psychotic patients and in special populations (the elderly and child and adolescent populations)





Specific Objectives

Module 1. Anxiety Disorder Emergencies

- ♦ Differentiate between normal anxiety and pathological anxiety
- ♦ Delve into different nosological entities and approach in emergency situations
- ♦ Learn about psychological approaches to used in psychiatric emergencies
- ♦ Update neurobiological and psychological knowledge of anxiety processes
- ♦ Update on pharmacological and psychological interventions effective in different anxiety disorders
- ♦ Update on pharmacological and psychological interventions in special populations with anxiety

Module 2. Affective Disorder Emergencies

- ♦ Identify the main affective disorders
- ♦ Delve into key elements in anamnesis for this type of patients
- ♦ Identify causes of secondary depression
- ♦ Enable decision making according to origin, severity, risks and social support
- ♦ Delve into different emergency treatment options, as well as treating special populations

Module 3. Psychotic Disorder Emergencies

- ♦ Approach the concept and assessment of psychotic patients in emergency medicine
- ♦ Delve into the basic conditions of care for psychotic patients in the emergency department
- ♦ Analyze interview techniques used on psychotic patients
- ♦ Synthesize the indications that may constitute an indication for hospitalization in a psychotic patient
- ♦ Analyze the differential diagnosis for acute psychosis
- ♦ Delve into treatment plans and approaches to possible side effects



Learn about the latest techniques used to deal with anxiety and agoraphobia crises"

03

Course Management

The medical professionals in this university program have a team of medical professionals with extensive experience in the area of psychiatry in relevant hospitals in this area. The experience of the faculty of this program will bring students closer to the reality that health personnel live every day in psychiatric emergencies. In this way, the physicians will obtain a quality education with an updated content in accordance with the philosophy that TECH imprints in all its programs.



“

An expert teaching team will provide you with the most updated knowledge on the main syndromes for which patients come to the psychiatric emergency department”

Management



Dr. Sánchez-Cabezudo Muñoz, Ángeles

- Specialist in the Brief Hospitalization Unit of the Toledo University Hospital Complex
- Psychiatrist in the Outpatient Mental Health Unit of the Toledo University Hospital Complex
- Specialist in the Short Stay Unit of the Virgen del Prado Hospital
- Psychiatrist at the 12 de Octubre University Hospital, Madrid
- Psychiatrist at the Mental Health Center Usera
- Researcher and teaching medical specialist, Brief Hospitalization Unit, Virgen del Prado Hospital
- Degree in Medicine and Surgery from the Complutense University of Madrid
- Specialty in Psychiatry from La Paz University Hospital, Madrid
- Postgraduate Certificate in Clinical Management in Psychiatry, Universitat Pompeu Fabra, Barcelona
- Member of: Working Group on the Prevention of Suicidal Behavior in Castilla la Mancha

Professors

Dr. Alvites Ahumada, María Pilar

- ♦ Psychiatry Coordinator, Adult Mental Health Unit, Toledo Hospital Complex
- ♦ Area Specialist in Psychiatry Toledo University Hospital
- ♦ Psychiatry Specialist, Regional Working Group on Suicide, SESCAM
- ♦ Psychiatry Specialist, Child and Adolescent Area, La Macha Hospital Center Complex and Nuestra Señora del Prado General Hospital
- ♦ Hospitalization Physician. San Pablo Hospital Complex
- ♦ Degree in Medicine and Surgery, National University of Trujillo
- ♦ Psychiatry Specialist in Psychiatry. Misericordia Provincial Hospital of Toledo
- ♦ PGY1 Psychiatry Resident. Icahn School of Medicine at Mount Sinai
- ♦ Specialist in Child and Adolescent Psychiatry. Castilla-La Mancha Health Service (SESCAM)
- ♦ Master's Degree in Suicidal Behavior, Pablo Olavide University
- ♦ Master's Degree in Clinical Psychology and Psychotherapy in Childhood and Adolescence University Institute of Dynamic Psychology Psychospace, INUPSI
- ♦ Master's Degree in Psychiatric Treatment Update in minor patients. CEU Cardenal Herrera University
- ♦ Child and Adolescent Psychiatry Expert, University of Barcelona

Dr. Sánchez-Revuelta, Marina

- ♦ Psychiatry Specialist at the Child and Adolescent Mental Health Unit, the Addictive Behavior Unit and the Brief Hospitalization Unit of the Psychiatry Service at the Toledo University Hospital Complex
- ♦ Degree in Medicine from the Complutense University of Madrid
- ♦ Master's Degree in Medicine, Complutense University of Madrid

Dr. Benito Ruiz, Adolfo

- ♦ Medical specialist in Psychiatry in the Toledo Hospital Complex
- ♦ FEA of Psychiatry, Toledo Hospital Complex
- ♦ FEA of Psychiatry at the Francisco Díaz Mental Health Center
- ♦ Chief researcher in several studies related to Psychiatry
- ♦ Author and co-author of dozens of scientific articles related to his specialty
- ♦ Author and coauthor of numerous book chapters
- ♦ Professor in Mental Health courses and in undergraduate studies
- ♦ Doctorate in Medicine, University of Alcala
- ♦ Master's Degree in Psychotherapy, Integrated Perspective from the University of Alcalá Henares
- ♦ Award of the Foundation for Biomedical Research of the Príncipe de Asturias University Hospital



A unique, key, and decisive academic experience to boost your professional development"

04

Structure and Content

This Postgraduate Diploma has been developed by a highly qualified teaching team with first-hand knowledge of the possible situations that the healthcare professional will have to face. Therefore, the syllabus of this program has been structured in 3 modules in which the students will delve into anxiety, affective and psychotic disorders. Each topic will give the guidelines applied for each case and the techniques currently applied for the diagnosis of patients and the treatments applied for each case. Video summaries and specialized readings will complete this teaching.



“

*Get to know the latest interview techniques
and approach measures used in patients
with psychotic disorders"*

Module 1. Anxiety Disorder Emergencies

- 1.1. Normal Anxiety vs Pathological Anxiety
- 1.2. Emergency Psychiatry Objectives in Anxious Patients
- 1.3. Clinical Manifestations of Anxiety
- 1.4. Differential Diagnosis of Anxiety
- 1.5. Anxiety Crises and Agoraphobia
 - 1.5.1. Prevalence
 - 1.5.2. Medical treatment
 - 1.5.3. Combined Treatments
- 1.6. Generalized Anxiety Disorder
 - 1.6.1. Contextualization
 - 1.6.2. Treatment
- 1.7. Post-Traumatic Stress Disorder
 - 1.7.1. Contextualization
 - 1.7.2. Approach in Emergencies
- 1.8. Obsessive Pictures
- 1.9. Somatic Symptom Disorder
 - 1.9.1. Contextualization
 - 1.9.2. Clinical Manifestations according to DSM V
 - 1.9.3. Differential Diagnosis and Diagnoses
 - 1.9.4. Treatment
- 1.10. Anxiety in Special Populations
 - 1.10.1. Anxiety in Elderly Patients
 - 1.10.2. Anxiety in Child and Adolescent Populations
 - 1.10.3. Anxiety during Pregnancy and Lactation



Module 2. Affective Disorder Emergencies

- 2.1. Preliminary Concepts: Major Affective Disorders
 - 2.1.1. Depression in Emergency Medicine
 - 2.1.2. Bipolar Affective Disorder in Emergency Medicine
 - 2.1.3. Schizoaffective Disorder
 - 2.1.4. Adaptive Disorders in Emergency Medicine
- 2.2. Identification and approach to Affective Patients in Emergency Medicine
 - 2.2.1. Key Elements in Anamnesis
 - 2.2.2. Causes of Secondary Depression
- 2.3. Psychopathological Exploration of Major Affective Disorders in Emergency Medicine
 - 2.3.1. Psychopathology of Depression
 - 2.3.2. Psychopathology of Mania
 - 2.3.3. Complementary Evaluations
 - 2.3.4. Use of Imaging Tests
- 2.4. Decision-Making in Cases of Affective Patients
- 2.5. Emergency Treatment for Affective Patients
 - 2.5.1. Pharmacological Treatment Indications
 - 2.5.2. Psychotherapeutic Guidelines
- 2.6. Affective Disorders in Elderly Patients
 - 2.6.1. Depression in the Elderly
 - 2.6.2. Mania in the Elderly
- 2.7. Affective Disorders in Pregnant / Breastfeeding Patients
- 2.8. Affective Disorders in Child and Adolescent Populations
- 2.9. Affective Disorders in Medical Pathology
- 2.10. Emergency Bereavement Care

Module 3. Psychotic Disorder Emergencies

- 3.1. Epidemiology and Prognosis
- 3.2. Patient Phases in Psychosis
 - 3.2.1. First Episode Phase
 - 3.2.2. Patient Phases with History of Psychosis
- 3.3. Differential Diagnosis in Psychosis
 - 3.3.1. Differential Diagnosis in Non-Psychiatric Pathologies
 - 3.3.2. Differential Diagnosis in Psychiatric Pathologies
- 3.4. Psychotic Patient Clinical Interviews
 - 3.4.1. Interview Techniques and Approach Measures
- 3.5. Frequent Symptoms in Psychotic Disorders and Notions for Exploration
- 3.6. Special Populations
 - 3.6.1. Children
 - 3.6.2. Elderly People
 - 3.6.3. Pregnant / Breastfeeding Women
- 3.7. Pharmacological Treatment in Emergency Medicine
- 3.8. Treatment Plans for Psychotic Patients in the Emergency Department
- 3.9. Dealing with Acute Complications Associated with Pharmacologic Treatments
- 3.10. Legal Aspects regarding Psychotic Patients in the Emergency Department



Update your knowledge on treatment plans applied to psychotic patients presenting to the emergency department"

05 Methodology

This academic program offers students a different way of learning. Our methodology uses a cyclical learning approach: **Relearning**.

This teaching system is used, for example, in the most prestigious medical schools in the world, and major publications such as the **New England Journal of Medicine** have considered it to be one of the most effective.



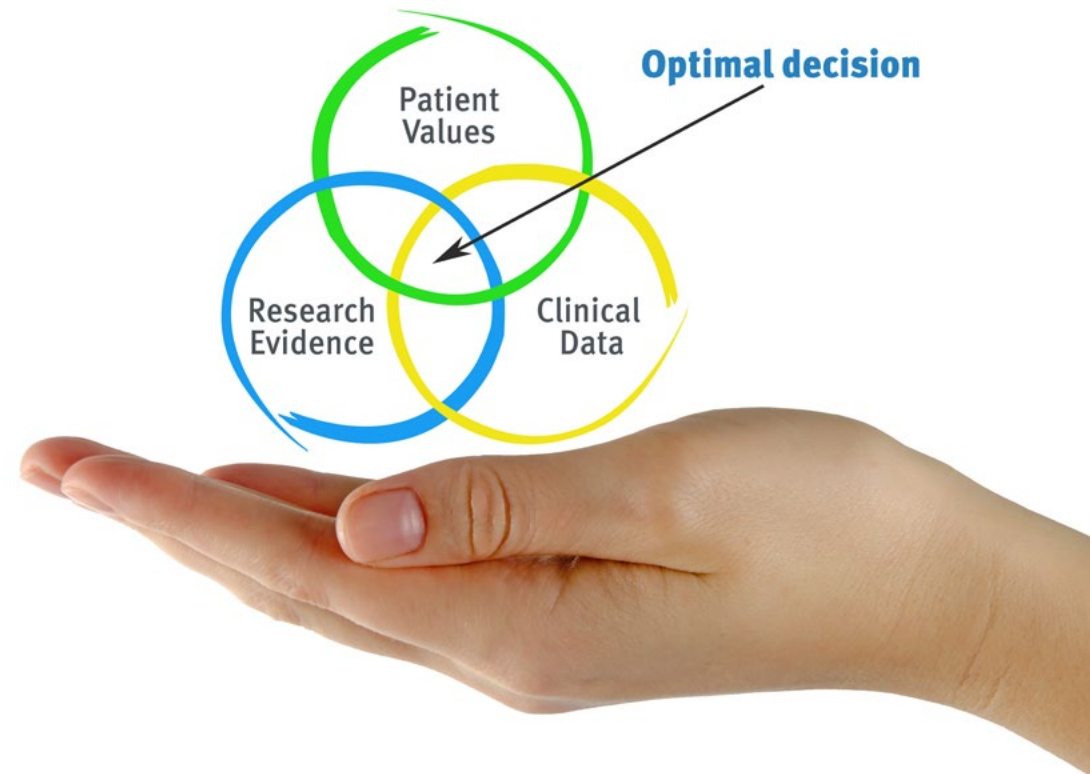
“

Discover Relearning, a system that abandons conventional linear learning, to take you through cyclical teaching systems: a way of learning that has proven to be extremely effective, especially in subjects that require memorization"

At TECH we use the Case Method

What should a professional do in a given situation? Throughout the program, students will face multiple simulated clinical cases, based on real patients, in which they will have to do research, establish hypotheses, and ultimately resolve the situation. There is an abundance of scientific evidence on the effectiveness of the method. Specialists learn better, faster, and more sustainably over time.

With TECH you will experience a way of learning that is shaking the foundations of traditional universities around the world.



According to Dr. Gervas, the clinical case is the annotated presentation of a patient, or group of patients, which becomes a "case", an example or model that illustrates some peculiar clinical component, either because of its teaching power or because of its uniqueness or rarity. It is essential that the case is based on current professional life, trying to recreate the real conditions in the physician's professional practice.

“

Did you know that this method was developed in 1912, at Harvard, for law students? The case method consisted of presenting students with real-life, complex situations for them to make decisions and justify their decisions on how to solve them. In 1924, Harvard adopted it as a standard teaching method”

The effectiveness of the method is justified by four fundamental achievements:

1. Students who follow this method not only achieve the assimilation of concepts, but also a development of their mental capacity, through exercises that evaluate real situations and the application of knowledge.
2. Learning is solidly translated into practical skills that allow the student to better integrate into the real world.
3. Ideas and concepts are understood more efficiently, given that the example situations are based on real-life.
4. Students like to feel that the effort they put into their studies is worthwhile. This then translates into a greater interest in learning and more time dedicated to working on the course.



Relearning Methodology

At TECH we enhance the case method with the best 100% online teaching methodology available: Relearning.

This university is the first in the world to combine the study of clinical cases with a 100% online learning system based on repetition, combining a minimum of 8 different elements in each lesson, a real revolution with respect to the mere study and analysis of cases.

Professionals will learn through real cases and by resolving complex situations in simulated learning environments. These simulations are developed using state-of-the-art software to facilitate immersive learning.



At the forefront of world teaching, the Relearning method has managed to improve the overall satisfaction levels of professionals who complete their studies, with respect to the quality indicators of the best online university (Columbia University).

With this methodology, more than 250,000 physicians have been trained with unprecedented success in all clinical specialties regardless of surgical load. Our pedagogical methodology is developed in a highly competitive environment, with a university student body with a strong socioeconomic profile and an average age of 43.5 years old.

Relearning will allow you to learn with less effort and better performance, involving you more in your specialization, developing a critical mindset, defending arguments, and contrasting opinions: a direct equation to success.

In our program, learning is not a linear process, but rather a spiral (learn, unlearn, forget, and re-learn). Therefore, we combine each of these elements concentrically.

The overall score obtained by TECH's learning system is 8.01, according to the highest international standards.



This program offers the best educational material, prepared with professionals in mind:



Study Material

All teaching material is produced by the specialists who teach the course, specifically for the course, so that the teaching content is highly specific and precise.

These contents are then applied to the audiovisual format, to create the TECH online working method. All this, with the latest techniques that offer high quality pieces in each and every one of the materials that are made available to the student.



Surgical Techniques and Procedures on Video

TECH introduces students to the latest techniques, the latest educational advances and to the forefront of current medical techniques. All of this in direct contact with students and explained in detail so as to aid their assimilation and understanding. And best of all, you can watch the videos as many times as you like.



Interactive Summaries

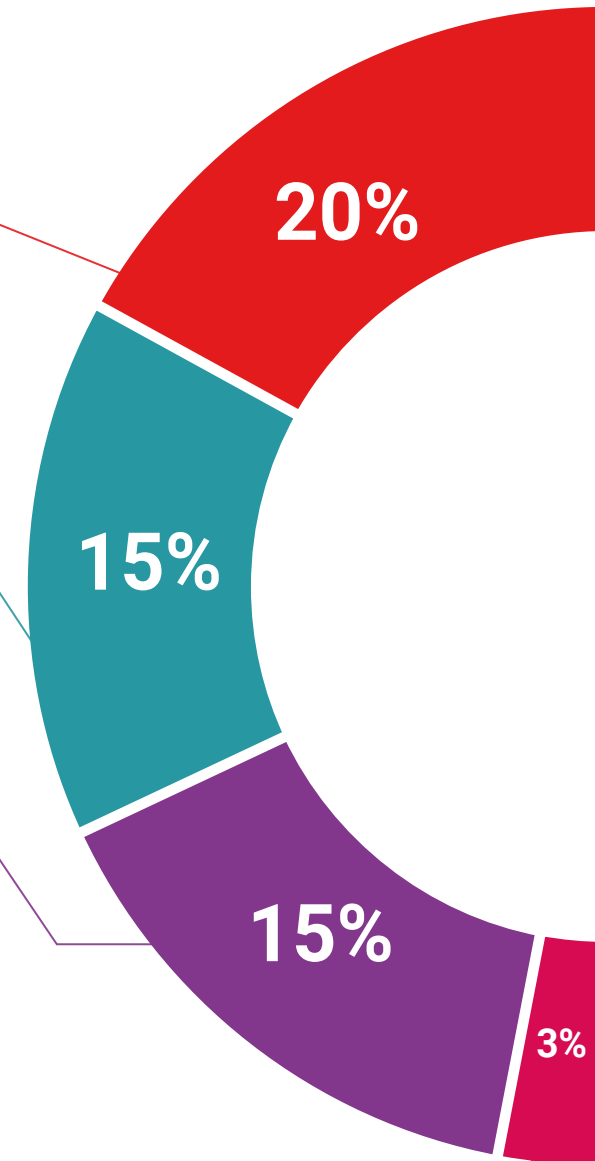
The TECH team presents the contents attractively and dynamically in multimedia lessons that include audio, videos, images, diagrams, and concept maps in order to reinforce knowledge.

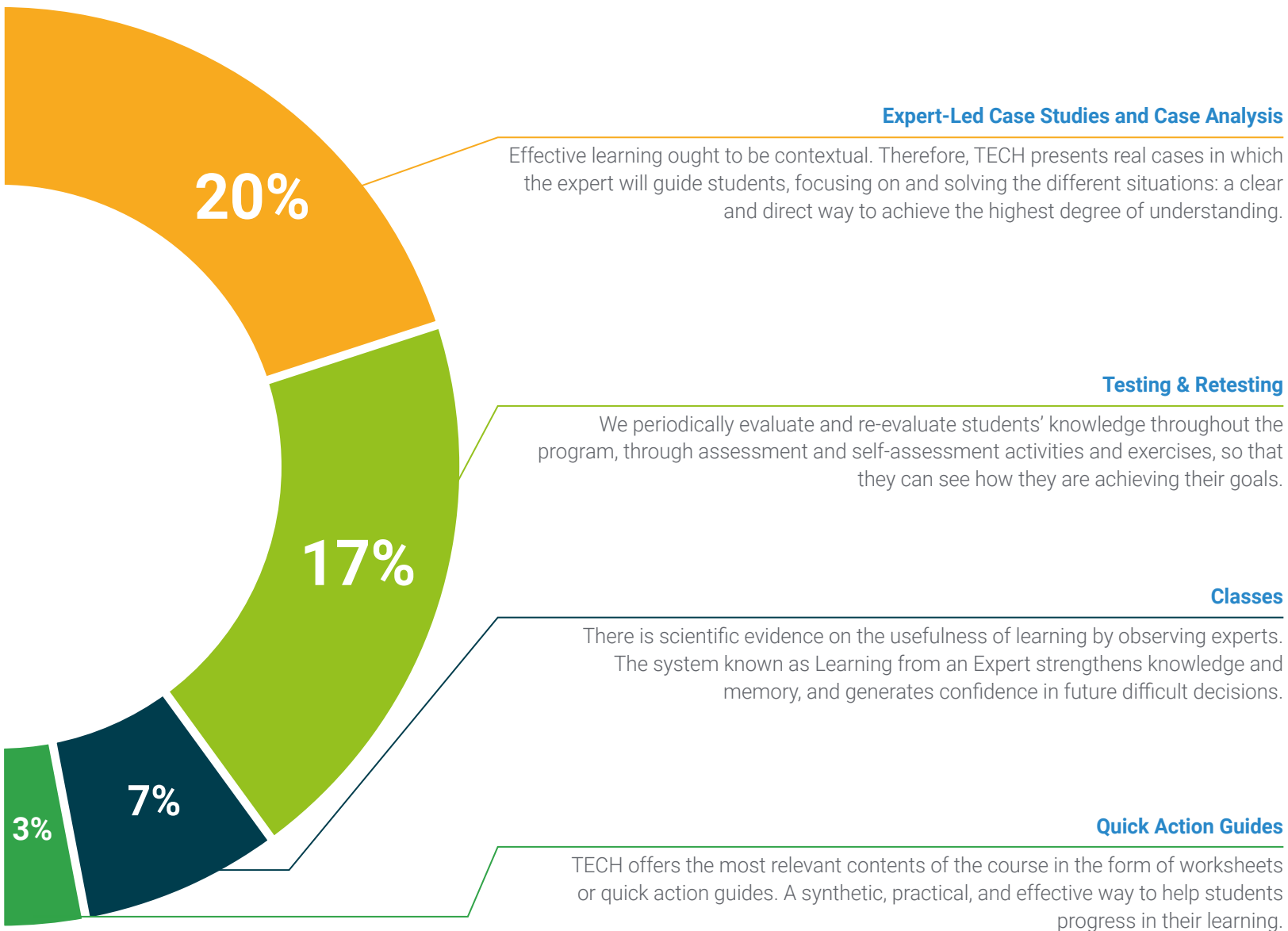
This exclusive educational system for presenting multimedia content was awarded by Microsoft as a "European Success Story".



Additional Reading

Recent articles, consensus documents and international guidelines, among others. In TECH's virtual library, students will have access to everything they need to complete their course.





06 Certificate

The Postgraduate Diploma in Major Syndromes in Psychiatric Emergencies guarantees students, in addition to the most rigorous and up-to-date education, access to a Postgraduate Diploma issued by TECH Technological University.



“

*Successfully complete this program and
receive your university qualification without
having to travel or fill out laborious paperwork”*

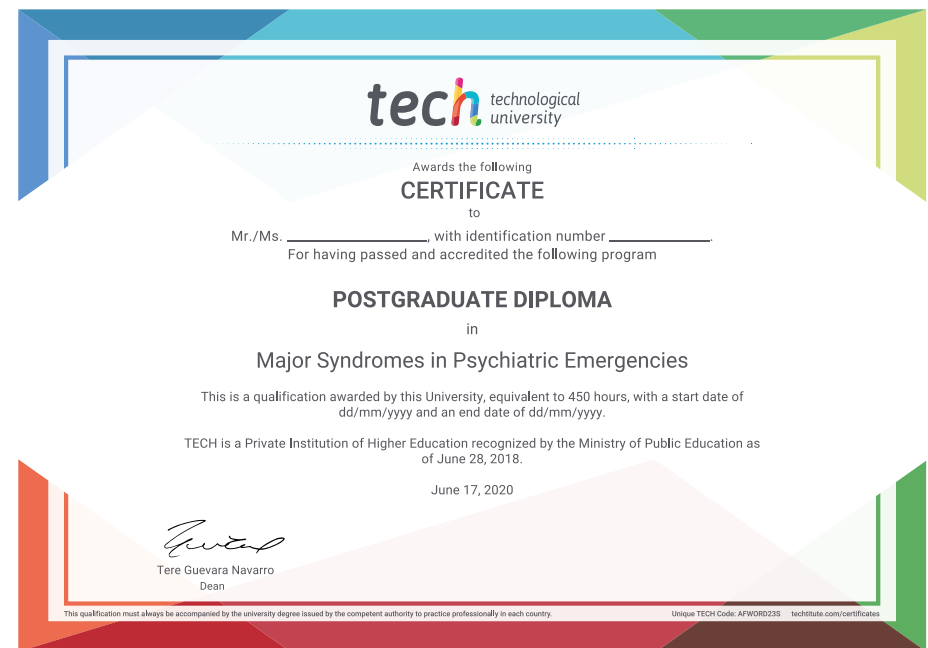
This **Postgraduate Diploma in Major Syndromes in Psychiatric Emergencies** contains the most complete and up-to-date scientific program on the market.

After the student has passed the assessments, they will receive their corresponding **Postgraduate Diploma** issued by **TECH Technological University** via tracked delivery*.

The certificate issued by **TECH Technological University** will reflect the qualification obtained in the Postgraduate Diploma, and meets the requirements commonly demanded by labor exchanges, competitive examinations, and professional career evaluation committees.

Title: **Postgraduate Diploma in Major Syndromes in Psychiatric Emergencies**

Official N° of Hours: **450 h.**



*Apostille Convention. In the event that the student wishes to have their paper certificate issued with an apostille, TECH EDUCATION will make the necessary arrangements to obtain it, at an additional cost.



Postgraduate Diploma

Major Syndromes in Psychiatric Emergencies

- » Modality: online
- » Duration: 6 months
- » Certificate: TECH Technological University
- » Dedication: 16h/week
- » Schedule: at your own pace
- » Exams: online

Postgraduate Diploma

Major Syndromes in Psychiatric Emergencies