

Postgraduate Diploma

Clinic and Diagnosis
in Inflammatory
Digestive Diseases



Postgraduate Diploma Clinic and Diagnosis in Inflammatory Digestive Diseases

- » Modality: online
- » Duration: 6 months
- » Certificate: TECH Technological University
- » Dedication: 16h/week
- » Schedule: at your own pace
- » Exams: online

Website: www.techtute.com/us/medicine/postgraduate-diploma/postgraduate-diploma-clinic-diagnosis-inflammatory-digestive-disease

Index

01

Introduction

p. 4

02

Objectives

p. 8

03

Course Management

p. 12

04

Structure and Content

p. 16

05

Methodology

p. 20

06

Certificate

p. 28

01

Introduction

The diagnostic complexity of certain inflammatory digestive diseases undoubtedly drives specialists to a process of continuous updating. The improvement of therapeutic endoscopy, radiological tests such as CT or abdominal ultrasound have revitalized this field, precisely driving the need for specialists to keep up to date. In response to this context, TECH has launched the present educational program, which includes the latest scientific postulates on advanced issues on differential diagnosis in inflammatory bowel diseases, capsule endoscopy or clinical assessment and evolution of inflammatory bowel disease. All this, in a 100% online format, in which specialists decide when, where and how to distribute the entire teaching load.





“

Discover the most recent developments concerning endoscopic capsules, differentiating the technical aspects and indications for both the small intestine and the colon"

Inflammatory bowel disease shows a very varied clinical expression, so much so that probably no two patients are alike, but rather the behavior of the disease is subject to different conditioning factors. The two paradigmatic entities of this group of diseases are ulcerative colitis and Crohn's disease. Although they share some similarities, they are absolutely independent entities with completely different distribution, evolution and response to treatment.

Due to the diagnostic and therapeutic challenge that this represents, specialists in the field are forced to find new treatments and updates that can make a fundamental difference in their daily work. For this reason, this Postgraduate Diploma was born, where the clinical differences between both entities are emphasized. Similarly, certain systemic diseases, such as Beçhet's disease, rheumatoid arthritis or systemic lupus erythematosus may have intestinal involvement that resembles and is confused with inflammatory bowel disease. This whole set is complicated, and we find overlapping syndromes in which it is not so well-defined what type of specific disease is involved.

The agenda covers, precisely, the update of available diagnostic methods, delving into the direct visualization of the digestive tract, endoscopic dilatation or corticosteroid injection, among others. Therefore, specialists will have access to a wide field of knowledge in the clinical and diagnostic fields, with a multitude of multimedia resources that include real and simulated cases, practical examples, self-knowledge exercises and videos in detail for each topic covered.

A unique academic opportunity to obtain a reliable update on everything related to Clinical and Diagnostic Inflammatory Digestive Diseases. In addition, its 100% online format allows an unusual adaptability to all kinds of responsibilities and professional schedules, being compatible with even the most demanding professional calendars.

This **Postgraduate Diploma in Clinic and Diagnostic Inflammatory Digestive Diseases** contains the most complete and up-to-date scientific program on the market. The most important features include:

- ♦ The development of case studies presented by experts in Inflammatory Diseases
- ♦ The graphic, schematic, and practical contents with which they are created, provide scientific and practical information on the disciplines that are essential for professional practice
- ♦ Practical exercises where self-assessment can be used to improve learning
- ♦ Its special emphasis on innovative methodologies
- ♦ Theoretical lessons, questions to the expert, debate forums on controversial topics, and individual reflection assignments
- ♦ Content that is accessible from any fixed or portable device with an Internet connection



Explores the most important new digestive diagnostic techniques, examining the clinical evolution and anatomical topography of inflammatory bowel disease"

“

Examines the role of pathological anatomy, radiological tests and abdominal ultrasound in the differential diagnosis of inflammatory bowel diseases”

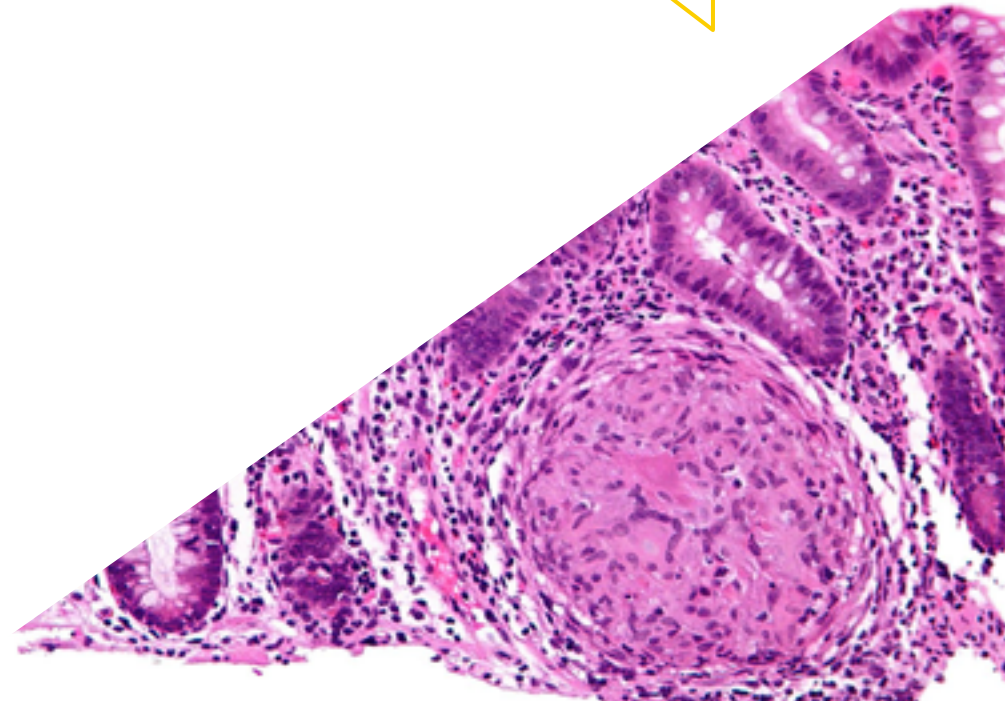
The program's teaching staff includes professionals from the sector who contribute their work experience to this educational program, as well as renowned specialists from leading societies and prestigious universities.

The multimedia content, developed with the latest educational technology, will provide the professional with situated and contextual learning, i.e., a simulated environment that will provide immersive education programmed to learn in real situations.

This program is designed around Problem-Based Learning, whereby the professional must try to solve the different professional practice situations that arise during the academic year. For this purpose, the student will be assisted by an innovative interactive video system created by renowned and experienced experts.

Access advanced knowledge in inflammatory digestive diseases, prepared by a team of experts widely versed in the subject.

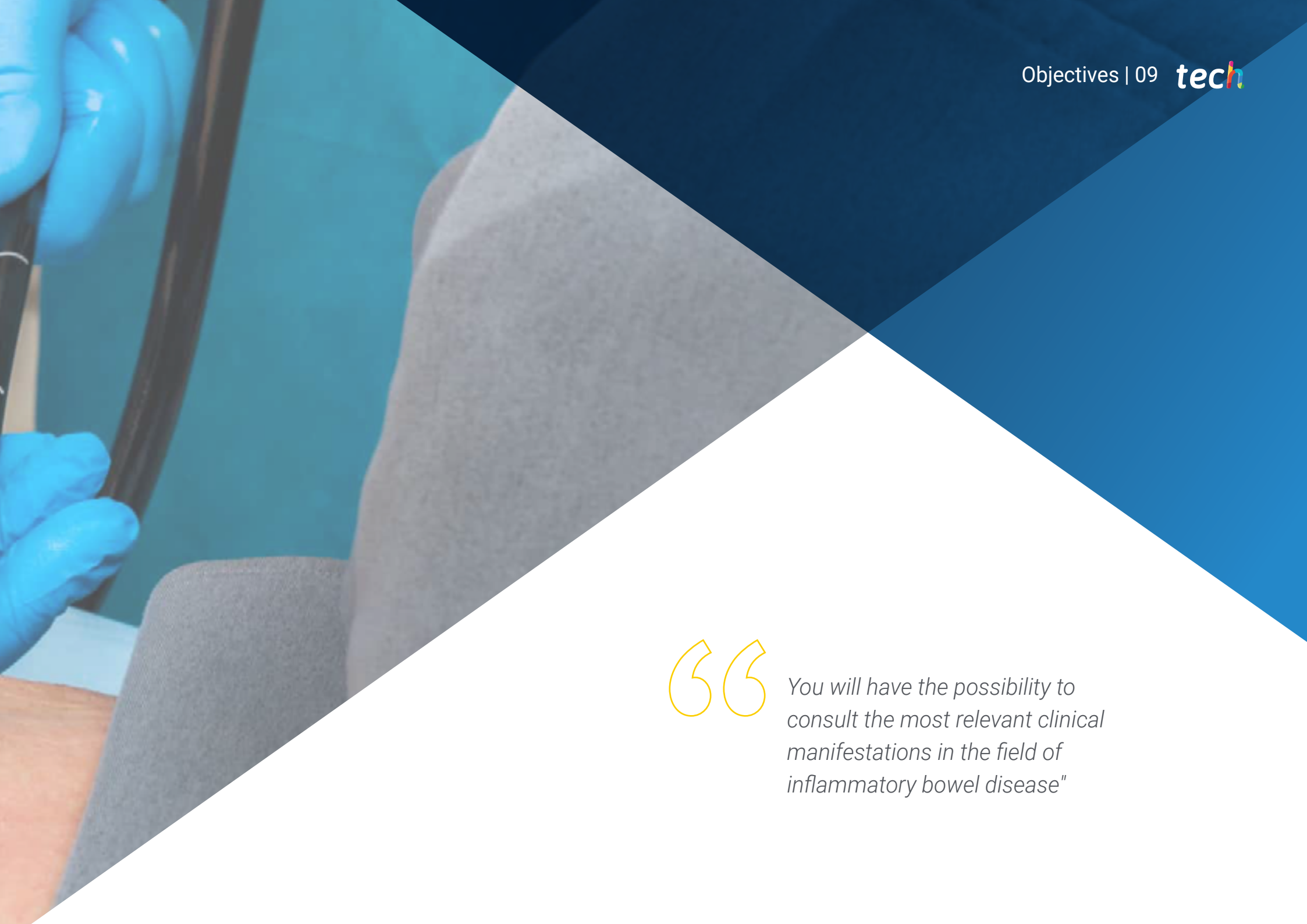
Distribute the course load at your own pace and according to your own responsibilities, without the pressure of face-to-face classes or fixed schedules.



02 Objectives

The objective of this program could not be other than to bring medical professionals closer to the latest news on inflammatory digestive diseases, delving precisely into the field of clinical diagnosis. Therefore, over a period of 6 months, specialists will examine the most important new developments in this field, supported by high quality multimedia material and numerous real clinical examples that contextualize all the theory covered.





“

You will have the possibility to consult the most relevant clinical manifestations in the field of inflammatory bowel disease”



General Objectives

- ♦ To get up to date on the knowledge of the origin, as well as in the current scientific state of diagnosis and treatment of inflammatory bowel disease
- ♦ Manage nutritional and psychological aspects of the disease
- ♦ Manage different situations of this disease throughout life (childhood, senescence, pregnancy, lactation, controlled disease or outbreaks)





Specific Objectives

Module 1. Clinical Manifestations in Inflammatory Bowel Disease

- ♦ Understand the different clinical expressions of the different entities that make up the group of diseases known as inflammatory bowel disease
- ♦ Know how to make a differential diagnosis between ulcerative colitis and Crohn's disease, as well as how to differentiate between other systemic diseases with similar clinical expression
- ♦ Catalog the extraintestinal manifestations frequently associated
 - ♦ with inflammatory bowel disease

Module 2. Diagnostic Methods in Inflammatory Bowel Disease

- ♦ Establish the analytical parameters useful to know the degree of activity of inflammatory bowel disease
- ♦ Know the data that abdominal ultrasound can provide as a diagnostic and useful method for the follow-up of inflammatory bowel disease
- ♦ Manage the indications and main radiological features of CT and MRI in the diagnosis of inflammatory bowel disease
- ♦ Use all the above features to establish a correct differential diagnosis between the entities that make up the group of inflammatory diseases with intestinal involvement
- ♦ Manage and know how to interpret the different clinical activity indexes

Module 3. Role of Endoscopy in Inflammatory Bowel Disease

- ♦ Understand and interpret the main endoscopic data in inflammatory bowel disease
- ♦ Know the indications for the performance of therapeutic maneuvers in patients with inflammatory bowel disease, as well as the management of complications
- ♦ Master the indications for performing capsule endoscopy of the small bowel and colon
- ♦ Manage endoscopic follow-up protocols in patients with inflammatory bowel disease, as well as establish strategies for the prevention of colorectal cancer



You will achieve your most demanding objectives thanks to a methodology and pedagogical teaching specially designed and elaborated by TECH"

03

Course Management

The entire teaching staff of this Postgraduate Diploma has been selected by TECH due to their experience in Clinic and Diagnostic Inflammatory Digestive Diseases. This gives the syllabus a necessary practical vision of endoscopy or radiological tests, complementing the best theory with the teachers' own clinical vision through detailed videos and other complementary material.





“

Access detailed videos and real clinical examples prepared directly by a team of experts in Digestive Medicine”

Management



Dr. Meneu Díaz, Juan Carlos

- Head of the General and Digestive System Surgery Department at the Ruber Juan Bravo Hospital Complex.
- Principal Investigator of the Applied Medical Research Group in Networking.
- Co-director of the Oncocir Medical Research Chair.
- Attending physician and head of section at the Hospital 12 de Octubre
- Attending Physician at the Ramón y Cajal Hospital
- Professor of Surgery at the European University of Madrid.
- Doctor of Medicine and Surgery, from the Complutense University of Madrid.
- Professor of Surgery at the European University of Madrid.

Professors

Dr. Giovanni Giordano, Pietro

- ♦ Specialist in General Surgery, Robotic Surgery and Digestive System at the Ruber Juan Bravo Hospital Complex
- ♦ Specialist in General Surgery and Digestive System at Quirón South Hospital in Alcorcón
- ♦ Degree in Medicine from the University of Cagliari
- ♦ Specialization in General and Digestive Surgery at the Ramón y Cajal University Hospital
- ♦ Expert in Hepatic Surgery and Transplantation
- ♦ Specialization in Hepatobiliopancreatic Surgery and Transplantation bases

Dr. Taboada Mostajo, Néstor Orlando

- ♦ Specialist in General Surgery and Digestive System in 12 de Octubre Hospital in Madrid
- ♦ Specialist in General and Digestive System Surgery at the Ruber Juan Bravo Hospital Complex
- ♦ Medical Degree from Universidad San Francisco Xavier de Chuquisaca



04

Structure and Content

The syllabus includes not only the main novelties in clinical manifestations, diagnostic methods and therapeutic endoscopies for inflammatory bowel diseases, but also complements it with a series of additional readings. In this way, specialists are guaranteed to be able to delve even deeper into the topics of greatest interest to them. Furthermore, the large number of detailed videos and interactive summaries will make the didactic work a much more enjoyable activity, saving the specialists an excessive investment of hours of study.





“

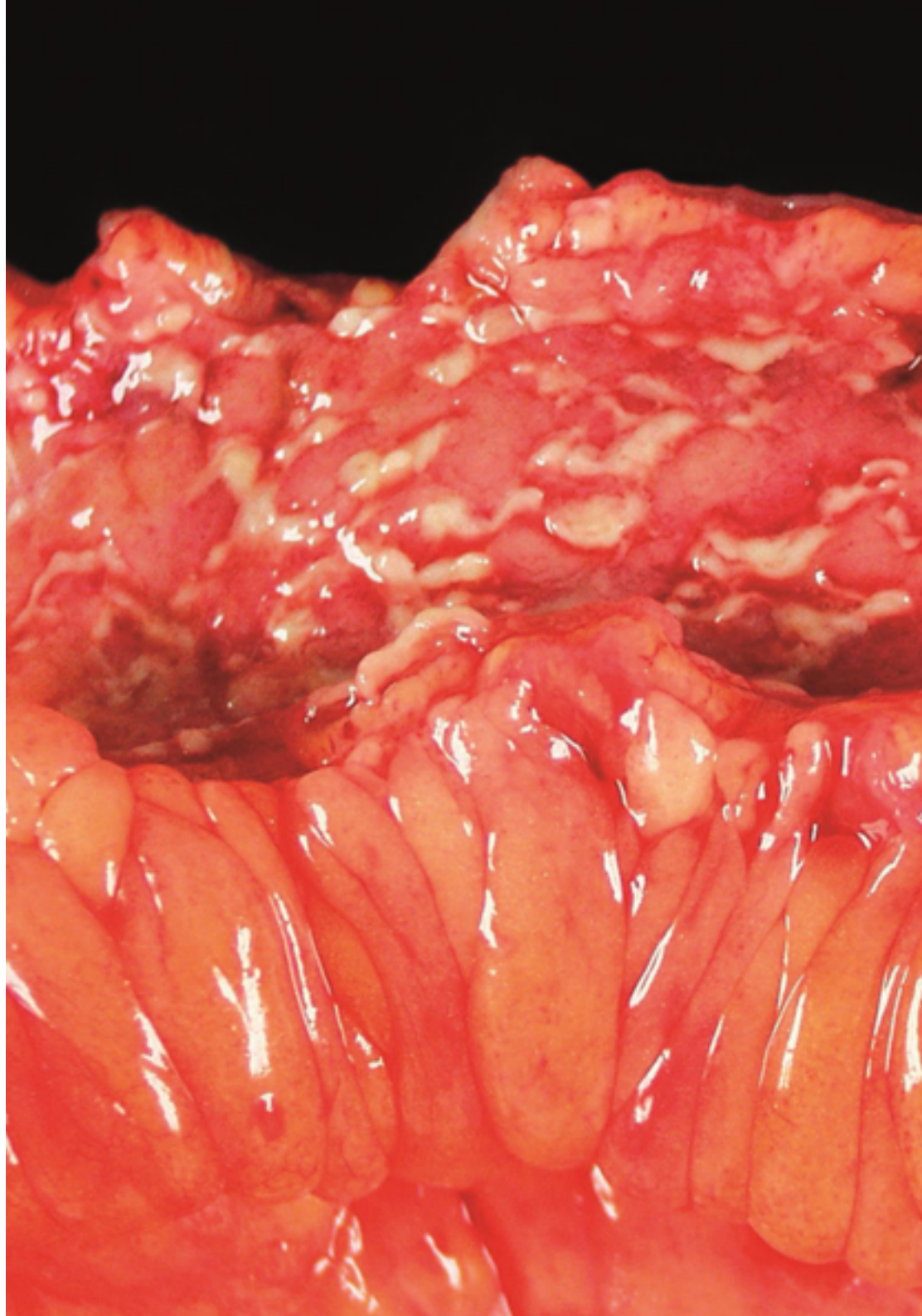
This Postgraduate Diploma contains the most current scientific information on inflammatory digestive diseases, in a convenient format that does not require extensive hours of study to master”.

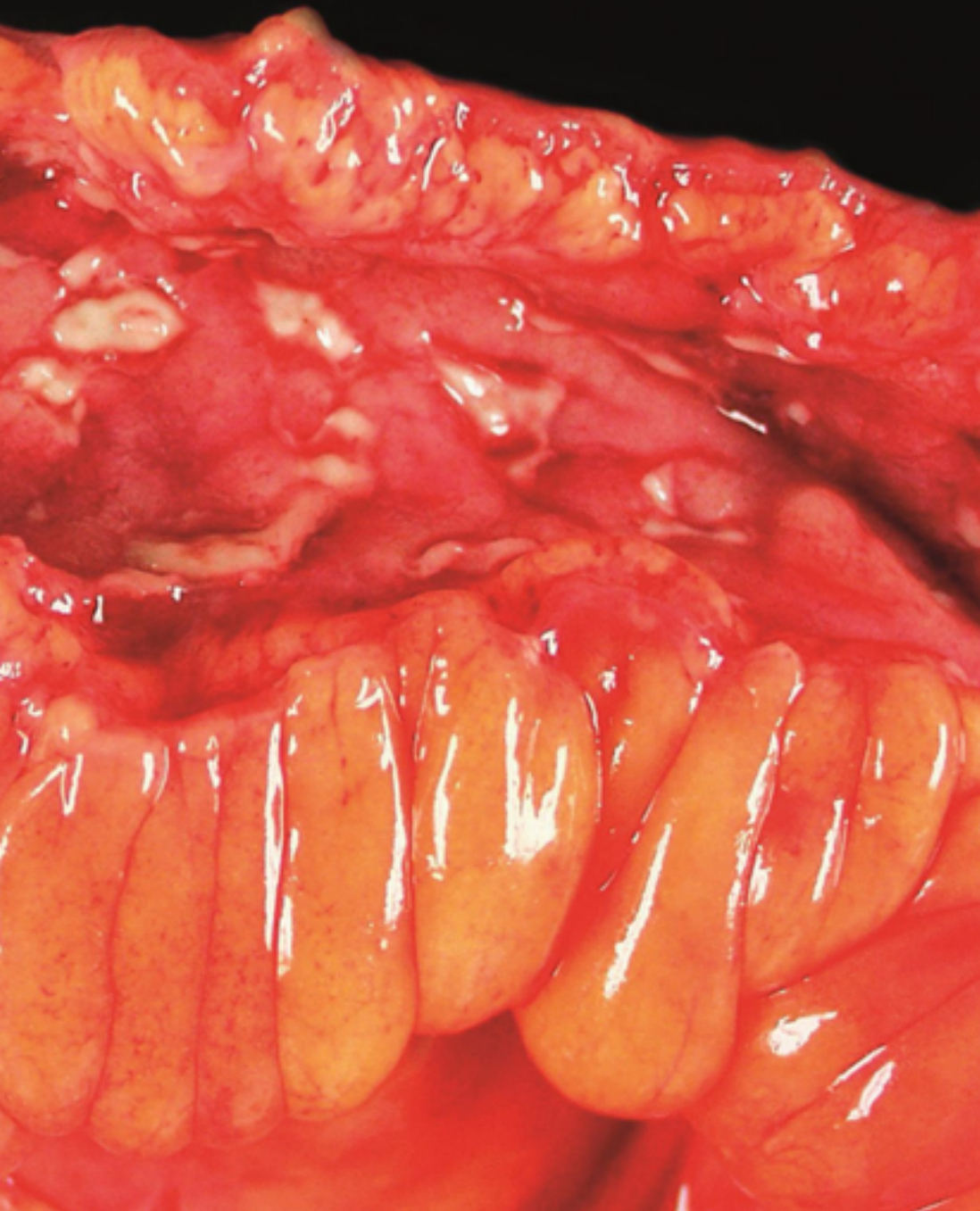
Module 1. Clinical Manifestations in Inflammatory Bowel Disease

- 1.1. Anatomic Topography in Inflammatory Bowel Disease.
- 1.2. Typical Clinical Presentations in Inflammatory Bowel Disease
- 1.3. Atypical Manifestations in Inflammatory Bowel Disease
- 1.4. Clinical Course of Inflammatory Bowel Disease
- 1.5. Assessment of the Severity of Inflammatory Bowel Disease
 - 1.5.1. Severity Indices in Ulcerative Colitis
 - 1.5.2. Severity Indexes in Crohn's Disease
- 1.6. Clinical Variants: Fistulizing Disease, Inflammatory Disease, Stenosis
- 1.7. Perianal Disease
- 1.8. Extraintestinal Manifestations of Inflammatory Bowel Disease
- 1.9. Clinical Manifestations in Other Inflammatory Bowel Diseases
- 1.10. Cancer and Inflammatory Bowel Disease

Module 2. Diagnostic Methods in Inflammatory Bowel Disease

- 2.1. Analytical Data
- 2.2. Abdominal ultrasound
- 2.3. X-Ray Tests CT, Entero-MRI
- 2.4. Pathologic Anatomy
- 2.5. Differential Diagnosis
- 2.6. Differences Between Ulcerative Colitis and Crohn's Disease
- 2.7. Inflammatory Bowel Disease Activity Indices
- 2.8. Diagnostic Criteria in Other Inflammatory Bowel Diseases
 - 2.8.1. Microscopic Colitis
 - 2.8.2. Bypass Colitis
 - 2.8.3. Solitary Rectal Ulcer Syndrome
- 2.9. Systemic Diseases with Intestinal Involvement
- 2.10. Other Diagnostic Methods in Inflammatory Bowel Disease: Conventional Radiology, Barium Studies, Nuclear Medicine, etc





Module 3. Role of Endoscopy in Inflammatory Bowel Disease

- 3.1. Diagnostic Endoscopy. Endoscopic Manifestations
- 3.2. Small Bowel Capsule Endoscopy.
 - 3.2.1. Technical Aspects
 - 3.2.2. Indications
 - 3.2.3. Complications
- 3.3. Endoscopic Capsule of the Colon
- 3.4. Therapeutic Endoscopy I. Polypectomy and Endoscopic Mucosal Resection
 - 3.4.1. Techniques
 - 3.4.2. Indications
 - 3.4.3. Complications
- 3.5. Therapeutic Endoscopy II. Endoscopic Submucosal Dissection
 - 3.5.1. Techniques
 - 3.5.2. Indications
 - 3.5.3. Complications
- 3.6. Therapeutic Endoscopy III. Endoscopic Treatment of Strictures
 - 3.6.1. Techniques
 - 3.6.2. Indications
 - 3.6.3. Complications
- 3.7. Endoscopy in the Assessment of Inflammatory Bowel Disease Relapses
- 3.8. Prevention of Colon Cancer in Inflammatory Bowel Disease
- 3.9. Endoscopic Findings in Other Inflammatory Bowel Diseases
- 3.10. New Endoscopic Techniques in the Diagnosis and Treatment of Inflammatory Bowel Disease.

05

Methodology

This academic program offers students a different way of learning. Our methodology uses a cyclical learning approach: **Relearning**.

This teaching system is used, for example, in the most prestigious medical schools in the world, and major publications such as the **New England Journal of Medicine** have considered it to be one of the most effective.





“

Discover Relearning, a system that abandons conventional linear learning, to take you through cyclical teaching systems: a way of learning that has proven to be extremely effective, especially in subjects that require memorization"

At TECH we use the Case Method

What should a professional do in a given situation? Throughout the program, students will face multiple simulated clinical cases, based on real patients, in which they will have to do research, establish hypotheses, and ultimately resolve the situation. There is an abundance of scientific evidence on the effectiveness of the method. Specialists learn better, faster, and more sustainably over time.

With TECH you will experience a way of learning that is shaking the foundations of traditional universities around the world.



According to Dr. Gérvas, the clinical case is the annotated presentation of a patient, or group of patients, which becomes a "case", an example or model that illustrates some peculiar clinical component, either because of its teaching power or because of its uniqueness or rarity. It is essential that the case is based on current professional life, trying to recreate the real conditions in the physician's professional practice.

“

Did you know that this method was developed in 1912, at Harvard, for law students? The case method consisted of presenting students with real-life, complex situations for them to make decisions and justify their decisions on how to solve them. In 1924, Harvard adopted it as a standard teaching method”

The effectiveness of the method is justified by four fundamental achievements:

1. Students who follow this method not only achieve the assimilation of concepts, but also a development of their mental capacity, through exercises that evaluate real situations and the application of knowledge.
2. Learning is solidly translated into practical skills that allow the student to better integrate into the real world.
3. Ideas and concepts are understood more efficiently, given that the example situations are based on real-life.
4. Students like to feel that the effort they put into their studies is worthwhile. This then translates into a greater interest in learning and more time dedicated to working on the course.



Relearning Methodology

At TECH we enhance the case method with the best 100% online teaching methodology available: Relearning.

This university is the first in the world to combine the study of clinical cases with a 100% online learning system based on repetition, combining a minimum of 8 different elements in each lesson, a real revolution with respect to the mere study and analysis of cases.

Professionals will learn through real cases and by resolving complex situations in simulated learning environments. These simulations are developed using state-of-the-art software to facilitate immersive learning.



At the forefront of world teaching, the Relearning method has managed to improve the overall satisfaction levels of professionals who complete their studies, with respect to the quality indicators of the best online university (Columbia University).

With this methodology, more than 250,000 physicians have been trained with unprecedented success in all clinical specialties regardless of surgical load. Our pedagogical methodology is developed in a highly competitive environment, with a university student body with a strong socioeconomic profile and an average age of 43.5 years old.

Relearning will allow you to learn with less effort and better performance, involving you more in your specialization, developing a critical mindset, defending arguments, and contrasting opinions: a direct equation to success.

In our program, learning is not a linear process, but rather a spiral (learn, unlearn, forget, and re-learn). Therefore, we combine each of these elements concentrically.

The overall score obtained by TECH's learning system is 8.01, according to the highest international standards.



This program offers the best educational material, prepared with professionals in mind:



Study Material

All teaching material is produced by the specialists who teach the course, specifically for the course, so that the teaching content is highly specific and precise.

These contents are then applied to the audiovisual format, to create the TECH online working method. All this, with the latest techniques that offer high quality pieces in each and every one of the materials that are made available to the student.



Surgical Techniques and Procedures on Video

TECH introduces students to the latest techniques, the latest educational advances and to the forefront of current medical techniques. All of this in direct contact with students and explained in detail so as to aid their assimilation and understanding. And best of all, you can watch the videos as many times as you like.



Interactive Summaries

The TECH team presents the contents attractively and dynamically in multimedia lessons that include audio, videos, images, diagrams, and concept maps in order to reinforce knowledge.

This exclusive educational system for presenting multimedia content was awarded by Microsoft as a "European Success Story".



Additional Reading

Recent articles, consensus documents and international guidelines, among others. In TECH's virtual library, students will have access to everything they need to complete their course.





Expert-Led Case Studies and Case Analysis

Effective learning ought to be contextual. Therefore, TECH presents real cases in which the expert will guide students, focusing on and solving the different situations: a clear and direct way to achieve the highest degree of understanding.



Testing & Retesting

We periodically evaluate and re-evaluate students' knowledge throughout the program, through assessment and self-assessment activities and exercises, so that they can see how they are achieving their goals.



Classes

There is scientific evidence on the usefulness of learning by observing experts. The system known as Learning from an Expert strengthens knowledge and memory, and generates confidence in future difficult decisions.



Quick Action Guides

TECH offers the most relevant contents of the course in the form of worksheets or quick action guides. A synthetic, practical, and effective way to help students progress in their learning.



06

Certificate

The Postgraduate Diploma in Clinic and Diagnostic in Inflammatory Digestive Diseases guarantees students, in addition to the most rigorous and up-to-date education, access to a Postgraduate Diploma issued by TECH Technological University.





“

Successfully complete this program and receive your Postgraduate Diploma without having to travel or fill out laborious paperwork”

This **Postgraduate Diploma in Clinic and Diagnostic in Inflammatory Digestive Diseases** contains the most complete and up-to-date scientific program on the market.

After the student has passed the assessments, they will receive their corresponding **Postgraduate Diploma** issued by **TECH Technological University** via tracked delivery*.

The diploma issued by **TECH Technological University** will reflect the qualification obtained in the Postgraduate Diploma, and meets the requirements commonly demanded by labor exchanges, competitive examinations, and professional career evaluation committees.

Title: **Postgraduate Diploma in Clinic and Diagnostic in Inflammatory Digestive Diseases**

Official N° of Hours: **450 h.**



*Apostille Convention. In the event that the student wishes to have their paper diploma issued with an apostille, TECH EDUCATION will make the necessary arrangements to obtain it, at an additional cost.



Postgraduate Diploma
Clinic and Diagnosis
in Inflammatory
Digestive Diseases

- » Modality: online
- » Duration: 6 months
- » Certificate: TECH Technological University
- » Dedication: 16h/week
- » Schedule: at your own pace
- » Exams: online

Postgraduate Diploma

Clinic and Diagnosis in Inflammatory Digestive Diseases

