

Postgraduate Certificate Psychogenic Dysphagia



Postgraduate Certificate Psychogenic Dysphagia

- » Modality: online
- » Duration: 6 weeks
- » Certificate: TECH Technological University
- » Dedication: 16h/week
- » Schedule: at your own pace
- » Exams: online

Website: www.techtute.com/us/medicine/postgraduate-certificate/psychogenic-dysphagia

Index

01

Introduction

p. 4

02

Objectives

p. 8

03

Course Management

p. 12

04

Structure and Content

p. 16

05

Methodology

p. 20

06

Certificate

p. 28

01

Introduction

Recent studies conclude that Psychogenic Dysphagia can be triggered by emotional factors such as stress, anxiety, depression or traumatic experiences. In some cases, it may be associated with eating disorders such as anorexia nervosa or bulimia. For this reason it is important for the physician to keep up-to-date with the latest advances and case studies on this pathology, in order to provide adequate treatment. With this in mind, TECH has developed a 100% online program that will provide the professional with the most rigorous and cutting-edge knowledge required to treat this condition. All this condensed in an exclusive program taught 100% online that gives you the necessary flexibility to reconcile family, work and professional updating.





“

You will discover the relationship between neuropsychological factors and Dysphagia, thanks to this Postgraduate Certificate"

Psychogenic Dysphagia is a rare swallowing disorder that is not due to physical or structural causes, but rather to psychological and emotional factors. Unlike the pathology caused by physical problems in the digestive system, the psychogenic one originates in the mind and may be associated with anxiety disorders, depression or stress. Symptoms can range from a feeling of obstruction in the throat to a total inability to swallow, which can have a significant impact on the quality of life and nutrition of sufferers.

Diagnosis of this pathology can be challenging, as it relies on ruling out other organic causes and identifying underlying psychological factors. For this reason, a thorough assessment that considers both physical and psychiatric aspects is essential to reach an accurate diagnosis.

Consequently, treatment of this condition focuses on addressing the factors that contribute to the disorder. This involves the use of psychological therapy, such as cognitive-behavioral therapy, to work on the dysfunctional thought patterns and behaviors related to Dysphagia. In addition, relaxation and stress management techniques can be used to reduce anxiety and improve swallowing function.

To achieve this goal, a Postgraduate Certificate in Psychogenic Dysphagia has been developed, which is presented in a completely virtual format, with first class resources. All this is gathered in a digital library accessible anytime, anywhere, without limitations. This methodology, together with the implementation of the Relearning approach developed by TECH, will ensure that the student acquires knowledge more effectively and with excellent results, minimizing their effort.

This **Postgraduate Certificate in Psychogenic Dysphagia** contains the most complete and up-to-date scientific program on the market. The most important features include:

- ◆ The development of practical cases presented by experts in Otorhinolaryngology and Speech Therapy
- ◆ The graphic, schematic, and practical contents with which they are created, provide scientific and practical information on the disciplines that are essential for professional practice
- ◆ Practical exercises where self-assessment can be used to improve learning
- ◆ Its special emphasis on innovative methodologies
- ◆ Theoretical lessons, questions to the expert, debate forums on controversial topics, and individual reflection assignments
- ◆ Content that is accessible from any fixed or portable device with an Internet connection



In only 6 weeks you will elaborate a Differential Diagnosis between Psychogenic Dysphagia and Neurological Dysphagia"

“

Through a 100% online methodology you will learn to differentiate and diagnose Psychogenic Dysphagia"

You will discover how the symptoms in Psychogenic Dysphagia go beyond swallowing difficulty, thanks to this program that only TECH offers you.

You will give the appropriate recommendations for a better treatment to relatives of patients with Psychogenic Dysphagia.

The program's teaching staff includes professionals from the field who contribute their work experience to this educational program, as well as renowned specialists from leading societies and prestigious universities.

The multimedia content, developed with the latest educational technology, will provide the professional with situated and contextual learning, i.e., a simulated environment that will provide immersive education programmed to learn in real situations.

This program is designed around Problem-Based Learning, whereby the professional must try to solve the different professional practice situations that arise during the educational year. For this purpose, the students will be assisted by an innovative interactive video system created by renowned and experienced experts.



02 Objectives

This program has been designed with the objective of giving physicians the necessary knowledge and skills that will enable them to understand, diagnose and effectively treat this disorder. This involves recognizing the underlying psychological factors contributing to Psychogenic Dysphagia, performing a thorough assessment that excludes other organic causes, and designing an appropriate treatment plan that addresses both the physical and psychological aspects of the disorder. All this gathered in a 100% online methodology that is totally flexible, so that the professionals can combine their daily activities with their learning activities, since they will not be subject to fixed schedules.





“

You will have at your disposal interactive summaries and multimedia resources that will help you to perform myofunctional interventions for patients with Psychogenic Dysphagia"



General Objectives

- ◆ Update theoretical and practical knowledge about Dysphagia
- ◆ Develop clinical assessment skills
- ◆ Design and implement treatment plans according to the most current procedures
- ◆ Delve into the most up-to-date technologies and techniques
- ◆ Encourage interdisciplinary collaboration





Specific Objectives

- ◆ Delve into Psychogenic Dysphagia
- ◆ Identify the triggering and predisposing factors of Psychogenic dysphagia
- ◆ Delve into strategies for the management and treatment of Psychogenic dysphagia

“

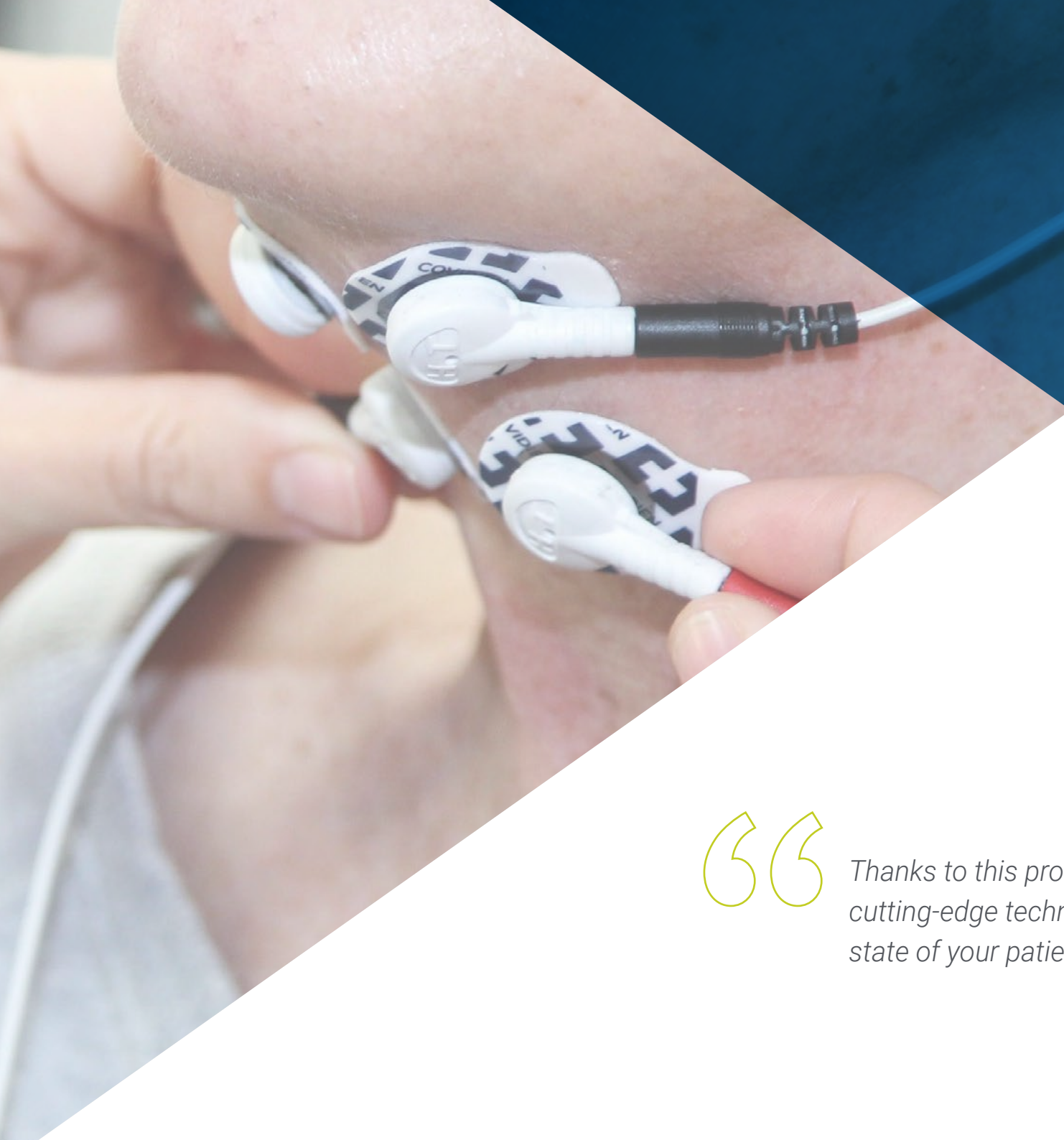
You will address the interdisciplinary relationship between psychology and speech therapy in the treatment of this pathology”

03

Course Management

In order to promote the updating of the medical professional's competencies, a Postgraduate Certificate has been developed with a syllabus designed by recognized experts in Dysphagia. The teacher team is composed of outstanding professionals with extensive experience in the health field, including areas such as Speech Therapy and Otolaryngology, which guarantees an interdisciplinary approach according to current needs. In addition, the proximity to the faculty allows the student to resolve any doubts that may arise in relation to the content of the educational program.





“

Thanks to this program, you will learn the most cutting-edge techniques to delve into the emotional state of your patients and intervene effectively”

Management



Dr. Maeso i Riera, Josep

- ◆ Director of the Otorhinolaryngology Section of the Otorhinolaryngology Ophthalmology Center of Egara
- ◆ Assistant Physician of the Otorhinolaryngology Service in the Head and Neck Section of the Mútua de Terrass University Hospital
- ◆ Physician in charge of the Dacryology Section (Ophthalmology Service) of the Delfos Medical Center
- ◆ Head of the Otorhinolaryngology Department at Sanitas CIMA Hospital
- ◆ Collaborating physician in the Otorhinolaryngology office of the Sanitas offices
- ◆ Specialist in Otorhinolaryngology
- ◆ Doctor in Medicine and Surgery from the Autonomous University of Barcelona
- ◆ Degree in Medicine and Surgery from the Autonomous University of Barcelona
- ◆ Diploma in Hospital Management from the School of Business Administration and Management
- ◆ Member of: Catalan Society of Oto-Rhino-Laryngology, Spanish Society of Otolaryngology and Cervico-Facial Pathology,, American Academy of Otolaryngology-Head and Neck Surgery



Ms. Marcos Galán, Victoria

- ◆ Director of the Crecemos contigo center and Neuro-logist
- ◆ Specialist in Voice Pathology and Myofunctional Therapy
- ◆ Professor, Department of Physiotherapy in Health Sciences, Castilla La Mancha University
- ◆ Trainer in health specialization courses in Speech Therapy Intervention
- ◆ Specialist in Voice Pathology from the University of Alcalá de Henares
- ◆ Degree in Speech Therapy from the Complutense University of Madrid



“

A unique, key, and decisive training experience to boost your professional development”

04

Structure and Content

This program addresses various aspects related to Psychogenic Dysphagia, including neuropsychological factors and their influence on swallowing. The causes and manifestations of nervous Dysphagia, such as phagophobia and fear of choking, will be explored. The importance of differential diagnosis to distinguish between Psychogenic dysphagia and other forms of the same condition will be emphasized. In addition, associated symptoms such as fear of swallowing, anxiety, depression and weight loss will be analyzed. All this together in a series of teaching resources such as interactive summaries, which will be found in a 100% virtual format.



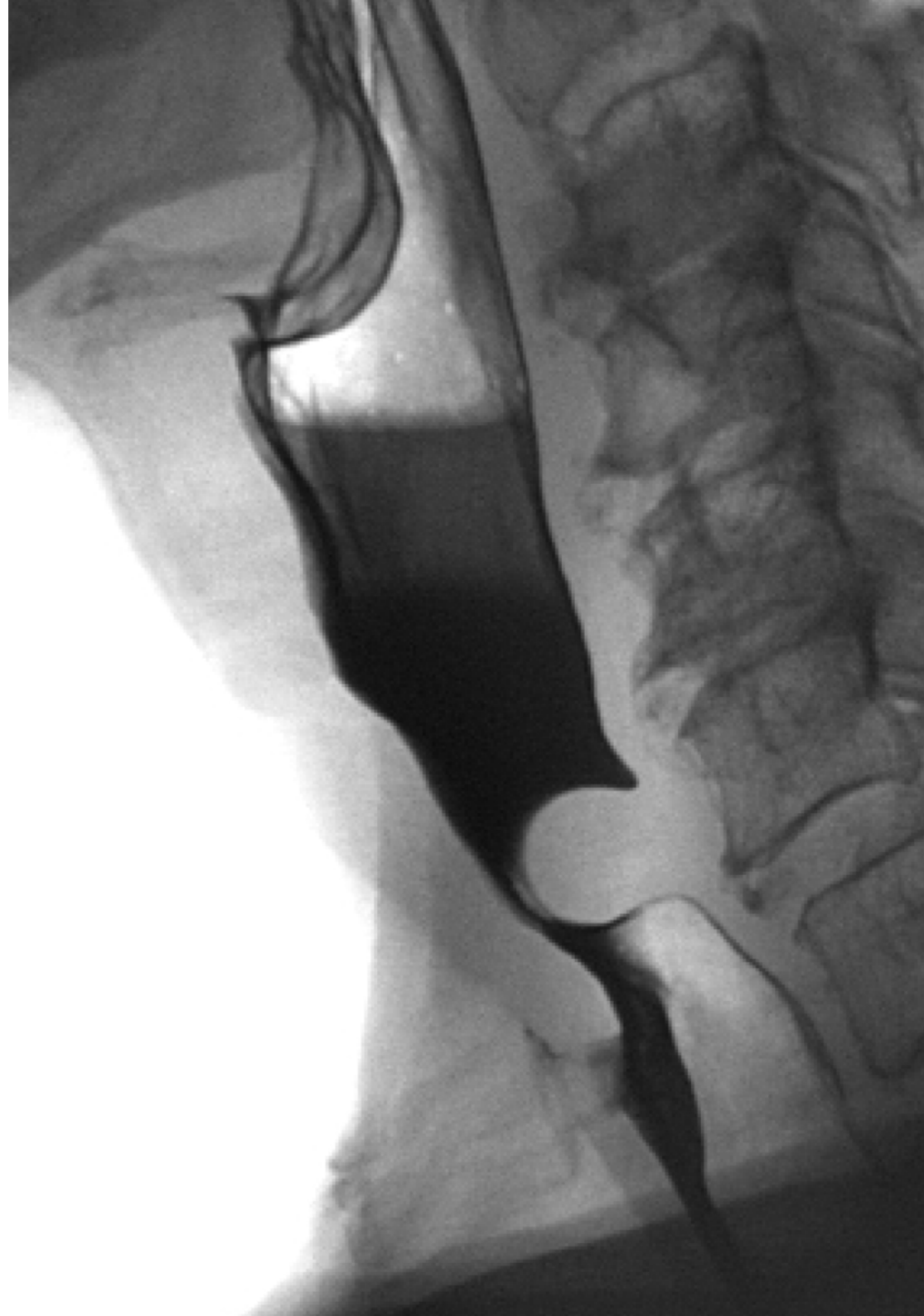
A close-up photograph of a hand holding a textured, brownish surface, possibly a book cover or a piece of fabric. The hand is positioned in the lower-left quadrant of the frame, with fingers slightly curled. The background is a solid blue color that transitions into a white area where the quote is located.

“

With the Relearning method, you will avoid spending long hours studying and will be able to focus on the most important concepts in an efficient way"

Module 1. Psychogenic dysphagia

- 1.1. Neuropsychological Factors and Swallowing
 - 1.1.1. Neurology and Dysphagia
 - 1.1.2. Psychology and Dysphagia
 - 1.1.3. Neuropsychological Factors and Dysphagia
 - 1.1.4. Conclusions
- 1.2. Nervous Dysphagia
 - 1.2.1. Definition
 - 1.2.2. Cause of Nervous Dysphagia
 - 1.2.3. Phagophobia
 - 1.2.4. Fear of Choking
- 1.3. Differential Diagnosis of Psychogenic Dysphagia
 - 1.3.1. Psychological Dysphagia/Neurological Dysphagia
 - 1.3.2. Psychological Dysphagia/ Organic Dysphagia
 - 1.3.3. Psychological Dysphagia/ Functional Dysphagia
 - 1.3.4. Conclusions
- 1.4. Symptoms in Psychogenic Dysphagia
 - 1.4.1. Subjective Symptoms/Objective Symptoms
 - 1.4.2. Fear of Swallowing
 - 1.4.3. Anxiety, Hypochondria, Depression. Panic Attack
 - 1.4.4. Weight Loss
 - 1.4.5. Loss of Security and Self-Esteem
- 1.5. Recommendations for Families with Psychogenic Dysphagia
 - 1.5.1. Guidelines for Family Members of Patients with Dysphagia
 - 1.5.2. Environmental Conditions
 - 1.5.3. Oral Hygiene Guidelines
 - 1.5.4. Conclusions
- 1.6. Recommendations for Children with Psychogenic Dysphagia
 - 1.6.1. Guidelines for Family Members of Patients with Dysphagia
 - 1.6.2. Environmental Conditions
 - 1.6.3. Oral Hygiene Guidelines
 - 1.6.4. Conclusions



- 1.7. Psychology, Speech Therapy and Psychogenic Dysphagia
 - 1.7.1. Interdisciplinary Relationship between Psychology and Speech-Language Pathology
 - 1.7.2. Psychological Treatment
 - 1.7.3. Speech Therapy Treatment
 - 1.7.4. Conclusions
- 1.8. Emotional State and Psychogenic Dysphagia
 - 1.8.1. Assessment of the Emotional State of the Patient with Dysphagia
 - 1.8.2. Diagnosis of the Emotional State of the Patient with Dysphagia
 - 1.8.3. Intervention in the Emotional State the Patient with Dysphagia
 - 1.8.4. Psychological Guidelines for Family and Environment of the Patient with Dysphagia
- 1.9. Logopedic Treatment of Psychogenic Dysphagia
 - 1.9.1. Myofunctional Intervention
 - 1.9.2. Body Movement Intervention
 - 1.9.3. Sensory Stimulation Intervention
 - 1.9.4. Breathing-Relaxation Intervention
- 1.10. Clinical Cases
 - 1.10.1. Clinical Case Adult with Psychogenic Dysphagia
 - 1.10.2. Clinical Case Children with Psychogenic Dysphagia
 - 1.10.3. Clinical Case Adult Support
 - 1.10.4. Clinical Case Child Support



You will analyze real clinical cases of patients with Psychogenic Dysphagia and discover how to provide them with the necessary support"

05

Methodology

This academic program offers students a different way of learning. Our methodology uses a cyclical learning approach: **Relearning**.

This teaching system is used, for example, in the most prestigious medical schools in the world, and major publications such as the **New England Journal of Medicine** have considered it to be one of the most effective.



“

Discover Relearning, a system that abandons conventional linear learning, to take you through cyclical teaching systems: a way of learning that has proven to be extremely effective, especially in subjects that require memorization"

At TECH we use the Case Method

What should a professional do in a given situation? Throughout the program, students will face multiple simulated clinical cases, based on real patients, in which they will have to do research, establish hypotheses, and ultimately resolve the situation. There is an abundance of scientific evidence on the effectiveness of the method. Specialists learn better, faster, and more sustainably over time.

With TECH you will experience a way of learning that is shaking the foundations of traditional universities around the world.



According to Dr. Gérvas, the clinical case is the annotated presentation of a patient, or group of patients, which becomes a "case", an example or model that illustrates some peculiar clinical component, either because of its teaching power or because of its uniqueness or rarity. It is essential that the case is based on current professional life, trying to recreate the real conditions in the physician's professional practice.

“

Did you know that this method was developed in 1912, at Harvard, for law students? The case method consisted of presenting students with real-life, complex situations for them to make decisions and justify their decisions on how to solve them. In 1924, Harvard adopted it as a standard teaching method”

The effectiveness of the method is justified by four fundamental achievements:

1. Students who follow this method not only achieve the assimilation of concepts, but also a development of their mental capacity, through exercises that evaluate real situations and the application of knowledge.
2. Learning is solidly translated into practical skills that allow the student to better integrate into the real world.
3. Ideas and concepts are understood more efficiently, given that the example situations are based on real-life.
4. Students like to feel that the effort they put into their studies is worthwhile. This then translates into a greater interest in learning and more time dedicated to working on the course.



Relearning Methodology

At TECH we enhance the case method with the best 100% online teaching methodology available: Relearning.

This university is the first in the world to combine the study of clinical cases with a 100% online learning system based on repetition, combining a minimum of 8 different elements in each lesson, a real revolution with respect to the mere study and analysis of cases.

Professionals will learn through real cases and by resolving complex situations in simulated learning environments. These simulations are developed using state-of-the-art software to facilitate immersive learning.



At the forefront of world teaching, the Relearning method has managed to improve the overall satisfaction levels of professionals who complete their studies, with respect to the quality indicators of the best online university (Columbia University).

With this methodology, more than 250,000 physicians have been trained with unprecedented success in all clinical specialties regardless of surgical load. Our pedagogical methodology is developed in a highly competitive environment, with a university student body with a strong socioeconomic profile and an average age of 43.5 years old.

Relearning will allow you to learn with less effort and better performance, involving you more in your specialization, developing a critical mindset, defending arguments, and contrasting opinions: a direct equation to success.

In our program, learning is not a linear process, but rather a spiral (learn, unlearn, forget, and re-learn). Therefore, we combine each of these elements concentrically.

The overall score obtained by TECH's learning system is 8.01, according to the highest international standards.



This program offers the best educational material, prepared with professionals in mind:



Study Material

All teaching material is produced by the specialists who teach the course, specifically for the course, so that the teaching content is highly specific and precise.

These contents are then applied to the audiovisual format, to create the TECH online working method. All this, with the latest techniques that offer high quality pieces in each and every one of the materials that are made available to the student.



Surgical Techniques and Procedures on Video

TECH introduces students to the latest techniques, the latest educational advances and to the forefront of current medical techniques. All of this in direct contact with students and explained in detail so as to aid their assimilation and understanding. And best of all, you can watch the videos as many times as you like.



Interactive Summaries

The TECH team presents the contents attractively and dynamically in multimedia lessons that include audio, videos, images, diagrams, and concept maps in order to reinforce knowledge.

This exclusive educational system for presenting multimedia content was awarded by Microsoft as a "European Success Story".



Additional Reading

Recent articles, consensus documents and international guidelines, among others. In TECH's virtual library, students will have access to everything they need to complete their course.





Expert-Led Case Studies and Case Analysis

Effective learning ought to be contextual. Therefore, TECH presents real cases in which the expert will guide students, focusing on and solving the different situations: a clear and direct way to achieve the highest degree of understanding.



Testing & Retesting

We periodically evaluate and re-evaluate students' knowledge throughout the program, through assessment and self-assessment activities and exercises, so that they can see how they are achieving their goals.



Classes

There is scientific evidence on the usefulness of learning by observing experts. The system known as Learning from an Expert strengthens knowledge and memory, and generates confidence in future difficult decisions.



Quick Action Guides

TECH offers the most relevant contents of the course in the form of worksheets or quick action guides. A synthetic, practical, and effective way to help students progress in their learning.



06 Certificate

The Postgraduate Certificate in Psychogenic Dysphagia guarantees students, in addition to the most rigorous and up-to-date education, access to a Postgraduate Certificate issued by TECH Technological University.





“

Successfully complete this program and receive your university qualification without having to travel or fill out laborious paperwork”

This **Postgraduate Certificate in Psychogenic Dysphagia** contains the most complete and up-to-date scientific on the market.

After the student has passed the assessments, they will receive their corresponding **Postgraduate Certificate** issued by **TECH Technological University** via tracked delivery*.

The diploma issued by **TECH Technological University** will reflect the qualification obtained in the Postgraduate Certificate, and meets the requirements commonly demanded by labor exchanges, competitive examinations, and professional career evaluation committees.

Title: **Postgraduate Certificate in Psychogenic Dysphagia**

Official N° of Hours: **150 h.**



*Apostille Convention. In the event that the student wishes to have their paper diploma issued with an apostille, TECH EDUCATION will make the necessary arrangements to obtain it, at an additional cost.

future

health confidence people

education information tutors

guarantee accreditation teaching

institutions technology learning

community commitment

personalized service innovation

knowledge present quality

online training

development languages
virtual classroom



Postgraduate Certificate

Psychogenic Dysphagia

- » Modality: online
- » Duration: 6 weeks
- » Certificate: TECH Technological University
- » Dedication: 16h/week
- » Schedule: at your own pace
- » Exams: online

Postgraduate Certificate Psychogenic Dysphagia

