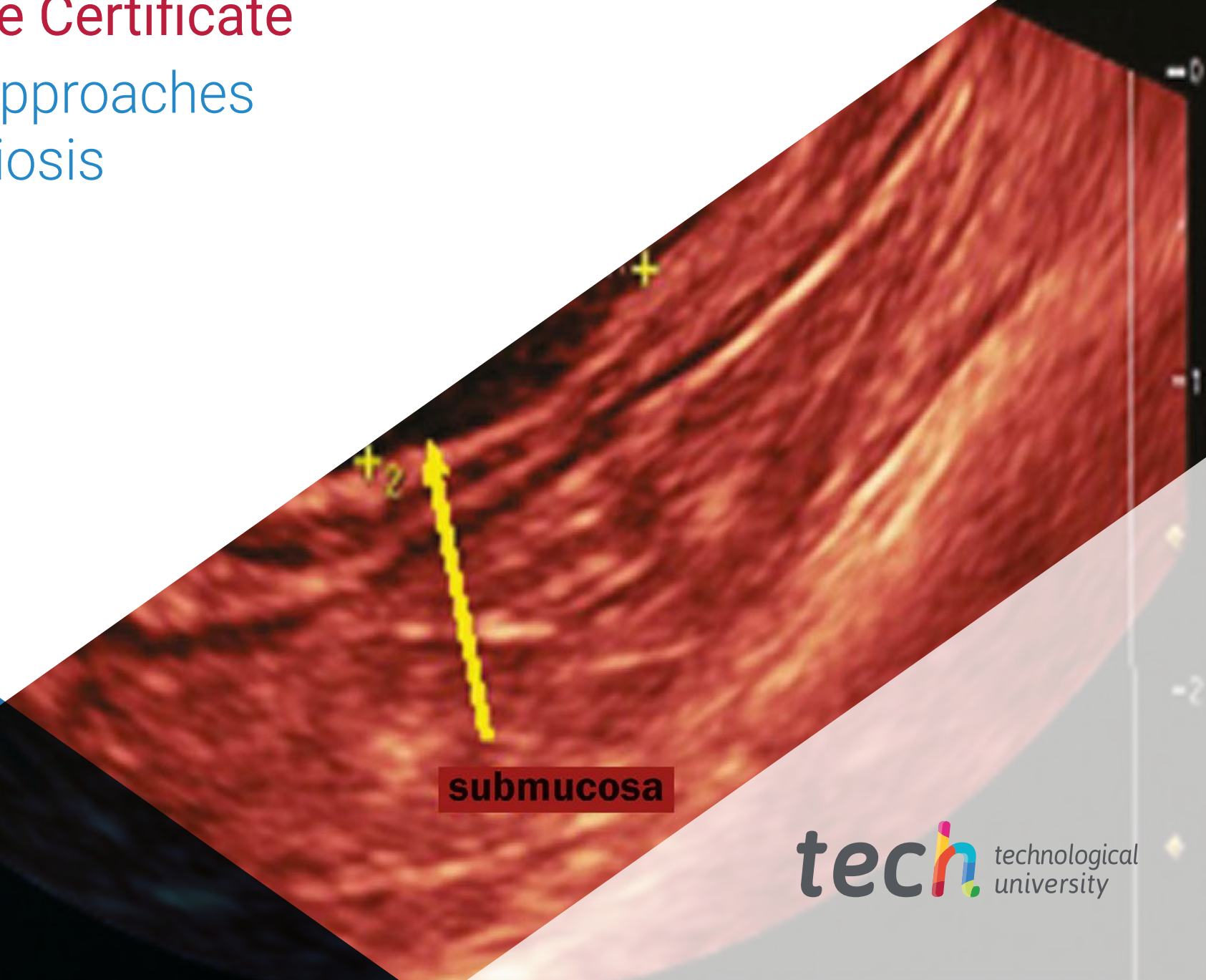


# Postgraduate Certificate

## Diagnostic Approaches to Endometriosis





## Postgraduate Certificate

### Diagnostic Approaches to Endometriosis

Course Modality: **Online**

Duration: **6 weeks**

Certificate: **TECH Technological University**

**6 ECTS Credits**

Teaching Hours: **150 hours.**

Website: [www.techtute.com/us/medicine/postgraduate-certificate/diagnostic-approaches-endometriosis](http://www.techtute.com/us/medicine/postgraduate-certificate/diagnostic-approaches-endometriosis)

# Index

01

Introduction

---

*p. 4*

02

Objectives

---

*p. 8*

03

Course Management

---

*p. 12*

04

Structure and Content

---

*p. 16*

05

Methodology

---

*p. 20*

06

Certificate

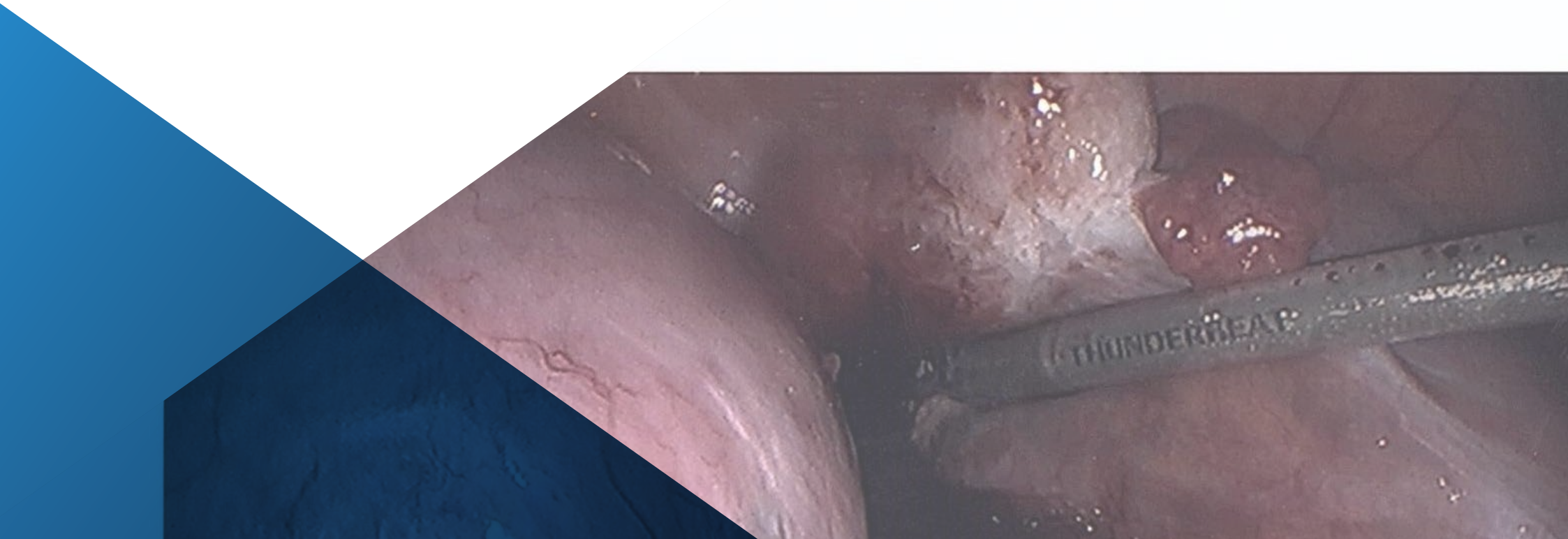
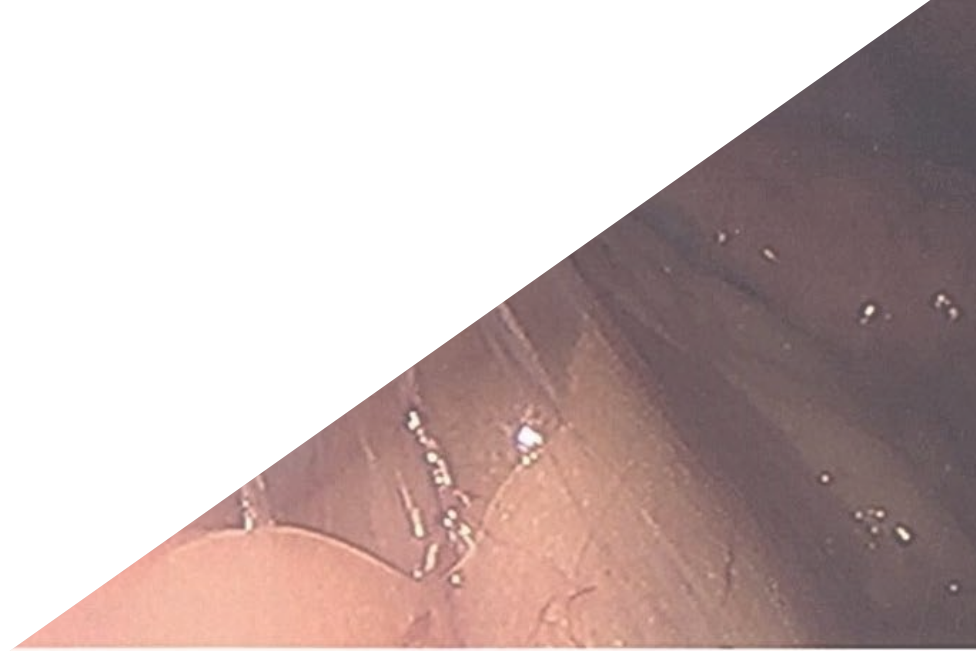
---

*p. 28*

# 01

# Introduction

Upgrade your knowledge in Diagnostic Approaches to Endometriosis with this high-level specialization thoroughly designed by industry professionals with years of experience in Endometriosis. A unique specialization that stands out for the quality of its syllabus and its learning methodology based on e-learning, which allows a faster and more efficient assimilation of the contents.



“

*With this program we want to meet your objective of acquiring superior specialization in this highly demanded field"*

There has always been great interest in the diagnosis of disease, even before the onset of symptoms, by means of biomarkers, i.e. substances that detect an individual's state of illness. The best known are glycoproteins that are used as tumor markers, the most important being CA 125. This last marker has been used in clinical practice, although with limited evidence about its diagnostic and prognostic capacity. However, in the absence of other options, its usefulness will be evaluated in the presence of a diagnostic suspicion with combined tests.

In addition, many other biomarkers have been investigated in both blood and urine. The investigation of antibodies and hormone markers has been promising but limited, likewise, interleukin analysis has its usefulness, although reduced. The different lines of research with the association of vascular markers and growth factors that may be used in the future will also be evaluated. However, knowing in depth this association of these markers with the diagnosis of endometriosis helps to understand both the origin and the stage of the disease. However, the most advanced studies and where it seems that we are trying to reach a useful marker in clinical practice belong to the field of genetics, both in the search for micro RNA and lnc RNA as well as with the association of genetic polymorphisms. After the initial difficulties encountered in the study of microRNAs, studies are now focusing on lnc RNAs. Although, as you will learn in this Postgraduate Certificate, much more promising and understandable is the analysis of combined polymorphisms.

This Postgraduate Certificate is designed to help professionals to better treat their patients affected by endometriosis. Effective education and training in the mechanisms of Diagnostic Approaches to Endometriosis is provided through practical and theoretical teaching by senior faculty.

The **Postgraduate Certificate in Diagnostic Approaches to Endometriosis** contains the scientific most complete and up-to-date educational program on the market. The most important features of the specialization are:

- ♦ The development of case studies presented by experts in Endometriosis.
- ♦ The graphic, schematic, and eminently practical contents with which they are created, provide scientific and practical information on the disciplines that are essential for professional practice.
- ♦ New developments in Endometriosis Techniques
- ♦ Practical exercises where self-assessment can be used to improve learning.
- ♦ Special emphasis on innovative methodologies in Endometriosis techniques.
- ♦ Theoretical lessons, questions to the expert, debate forums on controversial topics, and individual reflection assignments
- ♦ Content that is accessible from any fixed or portable device with an Internet connection



*A Postgraduate Certificate created to take the professional through the essential knowledge in Endometriosis, which they will be able to apply in their daily practice"*

“

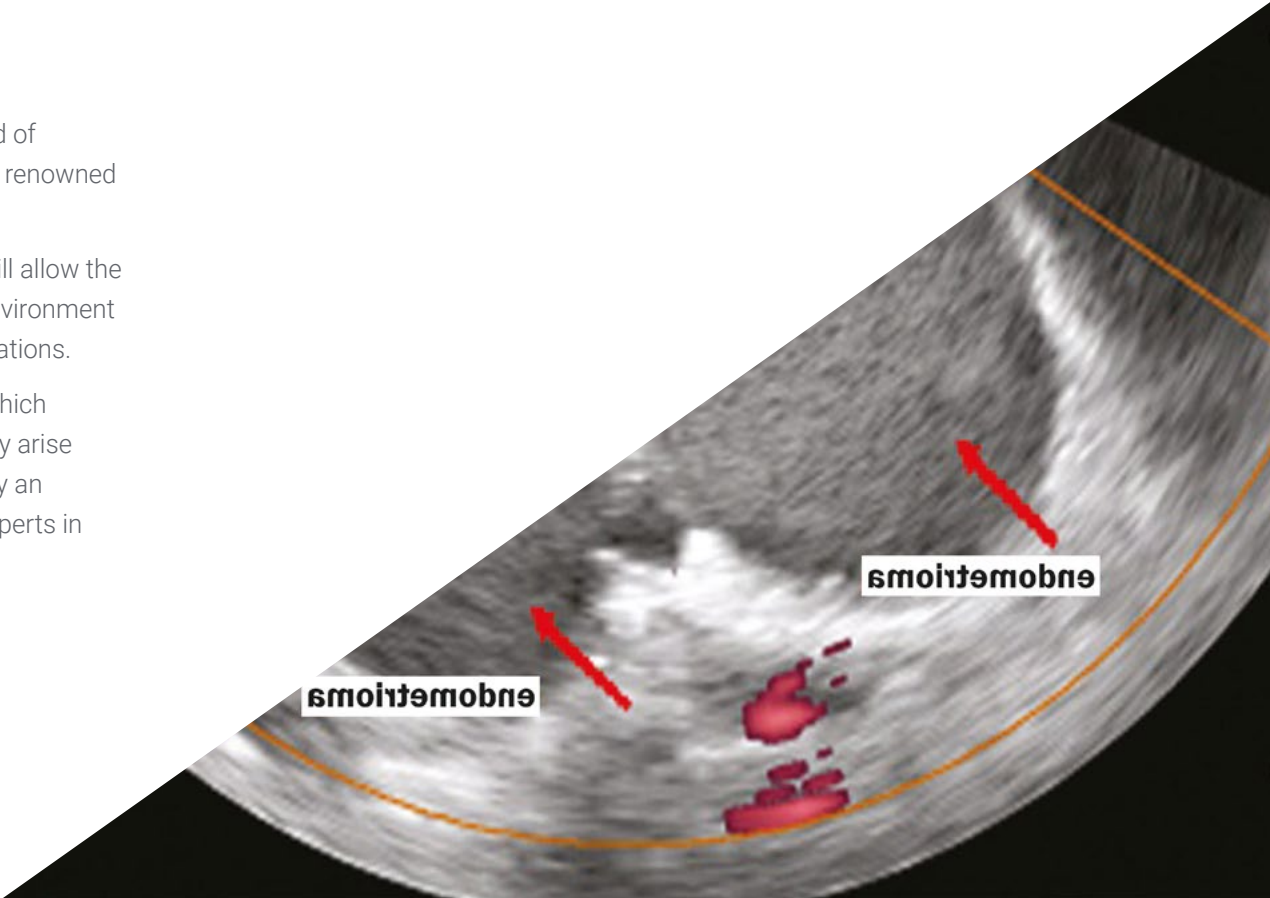
*Expand your knowledge through this Postgraduate Certificate and specialize in Endometriosis to achieve excellence in this field"*

*This Postgraduate Certificate 100% online course will allow you to combine your studies with your professional work while increasing your knowledge in this field.*

The program includes in its teaching staff professionals belonging to the field of medicine, who pour into this program the experience of their work, as well as renowned specialists from leading societies and prestigious universities.

Its Multimedia Content, elaborated with the latest Educational Technology, will allow the Professional a situated and contextual learning, that is to say, a Simulated Environment that will provide an immersive specialization programmed to train in real situations.

The design of this program is centered around Problem-Based Learning, in which the medical professional will resolve professional practice situations that may arise throughout the program. For this purpose, the professional will be assisted by an innovative interactive video system created by renowned and experienced experts in Endometriosis.

A grayscale ultrasound image of a uterus, showing internal structures. Two red arrows point to specific areas, each labeled with the word "endometriosis" in a white box. The text is mirrored. The image is partially obscured by a black diagonal shape in the bottom right corner.

endometriosis

endometriosis

# 02 Objectives

The Postgraduate Certificate in Diagnostic Approaches to Endometriosis is oriented towards facilitating the professional's performance using the latest advances and most innovative treatments in the sector, achieving a superior training that allows them to act with total security in the cases that arise in their practice.

A close-up photograph of a person's hand in a white lab coat, holding a pen over a clipboard. The clipboard has a form titled "Discharge Form" with fields for "Date Admitted" and "Phone No.". Below these fields are several horizontal lines for writing. At the bottom of the form, there are checkboxes for "Yes" and "No" next to the text "Patient Terminated". The background is a blurred outdoor scene with a window.

Discharge Form

Date Admitted

Phone No.:

Yes  No

Patient Terminated



“

*At TECH, our objective is to offer specialization most complete training in Endometriosis so that you reach a higher level of training which will propel you to elite professional level”*



## General Objectives

---

- ♦ Develop your educational and professional expertise in all the core areas of Endometriosis, giving you the appropriate knowledge, understanding and professional skills to improve the management of the patient with this chronic disease
- ♦ Develop leadership skills in Endometriosis, so that you will be able to form a multidisciplinary team focused on this pathology
- ♦ Acquire an understanding of the processes involved in the etiopathogenesis and pathophysiology of endometriosis, as well as their epidemiological aspects, which will provide adequate knowledge to provide a correct clinical history of the disease
- ♦ Achieve sufficient skills to make a diagnostic approach to the patient through the clinical symptoms they present. Broaden knowledge about less frequent symptomatology
- ♦ Explore in depth the different diagnostic approaches to Endometriosis from a critical perspective of routine clinical practice. Analyze combined diagnostic criteria
- ♦ Gain knowledge of diagnostic techniques in research ranging from immunology to genetics and epigenetics. Develop competencies to know how to interpret results and in which situations to apply them
- ♦ Achieve competent skills for the correct classification of Endometriosis. Know the types of Endometriosis and their severities according to different classifications
- ♦ Develop the ability to have an integrative vision of adenomyosis. Ability to diagnose, follow up and treat patients affected by this disease. Know in depth the current fields of research
- ♦ Gain an in-depth knowledge of Endometriosis from the treatment point of view. Deepen the knowledge of new medical therapies. Knowledge of new therapeutic lines of research.
- ♦ Acquire knowledge of the most appropriate surgical techniques depending on the patient's situation and the type of Endometriosis. Increase knowledge about complications and their treatment
- ♦ Deepen knowledge about the medical and preventive aspects of the effects of Endometriosis from the field of reproductive medicine. Know the perspectives of embryology and the in vitro fertilization laboratory.
- ♦ Know in depth, the associations with different pathological situations. Expand knowledge of the management of Endometriosis associated with autoimmune diseases. Learn more about cancer risk and the different diagnostic and preventive approaches



## Specific Objectives

---

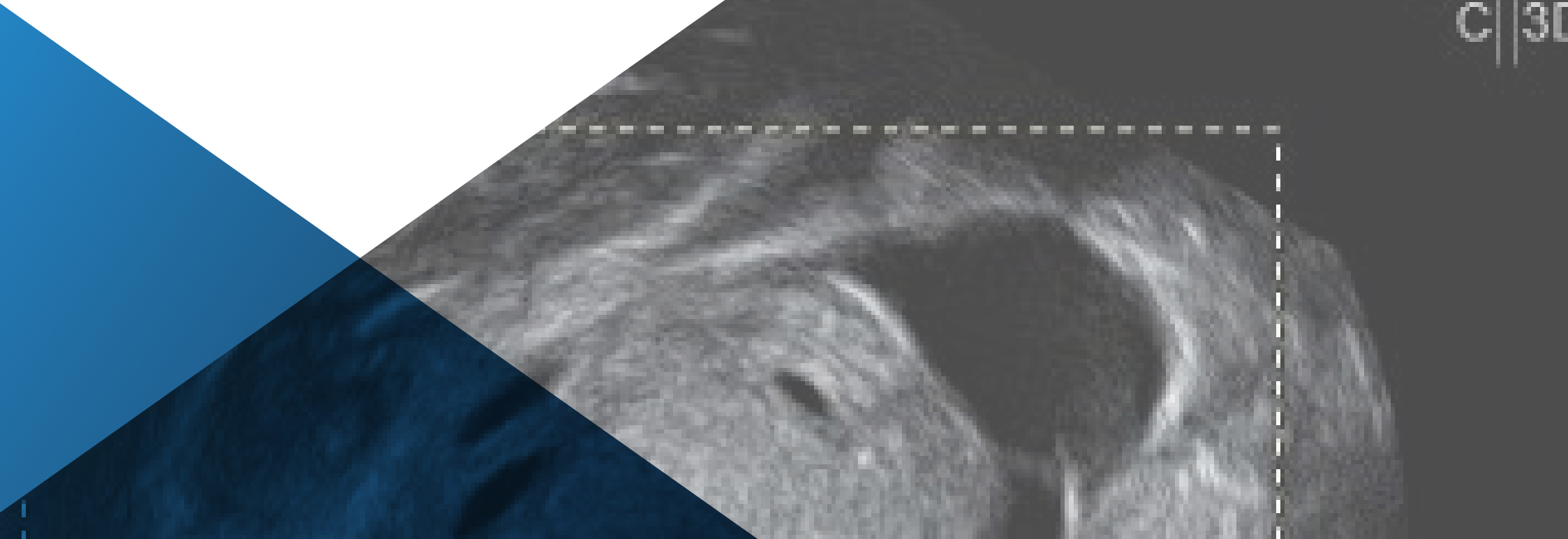
- ◆ Know in depth the glycoproteins used as tumor markers in the diagnosis of endometriosis. Inquire about the usefulness of the CA 125 marker and its uses in clinical practice
- ◆ Know how the different growth and vascular factors analyzed as biomarkers of Endometriosis are related. Know its pathogenic basis for such a relationship. Understanding studies of VEGF as a biomarker of endometriosis.
- ◆ Acquire the fundamental knowledge of immunology in endometriosis, and which interleukins are studied as biomarkers. Have the ability to perform critical reading of the studies carried out
- ◆ Deepen the hormonal profile of patients with endometriosis. Know which hormones have been studied as biomarkers. Understand the hormonal profile of the patient at high risk for endometriosis from the perspective of pathophysiology
- ◆ Gain in-depth knowledge of the most researched and promising urinary biomarkers. Understand the pathogenic basis for their appearance in urine and why they are difficult to diagnose accurately
- ◆ Acquire the skills to understand the significance of proteomics and metabolomics in the study of diagnostic markers of endometriosis. Understand the limitations of the technique and evaluate its usefulness in the field of research
- ◆ To know in depth the proposed diagnostic tests based on micro RNA studies. Understand the significance of the study of these in association with the immune response, as well as to know the different pathways of immunity with respect to micro RNAs. Understand the limitations of the technique
- ◆ Deepen the studies of lnc RNA and its association in the diagnosis of endometriosis. Understand the difference with micro RNA and pathway studies in the pathogenesis of endometriosis.

03

# Course Management

The program includes in its teaching staff leading experts in Endometriosis, who bring to this specialization the experience from their work. Additionally, other recognized experts participate in its design and preparation, completing the program in an interdisciplinary manner.

A	B
C	3D





“

*Leading experts in Gynecology and obstetrics have come together to share with you all their knowledge in this field"*

## Management



### Dr. Moliner Renau, Belén

- ◆ Director, Endometriosis Unit at Instituto Bernabeu
- ◆ Head of the Reproductive Medicine Ultrasound Department at Instituto Bernabeu.
- ◆ Coordinator of the "Image and Fertility" Working Group of the Spanish Fertility Society.
- ◆ Specialist in Obstetrics and Gynecology via MIR. Clinical University Hospital of Valencia
- ◆ Doctor in Medicine and "Cum Laude" Surgery. University of Valencia
- ◆ Master's Degree in Human Reproduction, Rey Juan Carlos University.
- ◆ Master's Degree in Research Methodology, Autonomous University of Barcelona.
- ◆ Advanced studies for the use of STATA in biomedical research. Autonomous University of Barcelona
- ◆ Expert in Medical Genetics. University of Valencia
- ◆ Master in autoimmune diseases
- ◆ University Certificate of Introduction to Regenerative Medicine: Biology and Applications of Human Stem Cells. University of Valencia

## Professors

### Dr. Fabregat Reolid, Ana

- Director of the Clinical Analysis Department of the Instituto Bernabeu.
- Doctor in Pharmacy and specialist in Human Reproductive Biology. Bernabeu Institute of Alicante

### Dr. Lledo Bosch, Belén

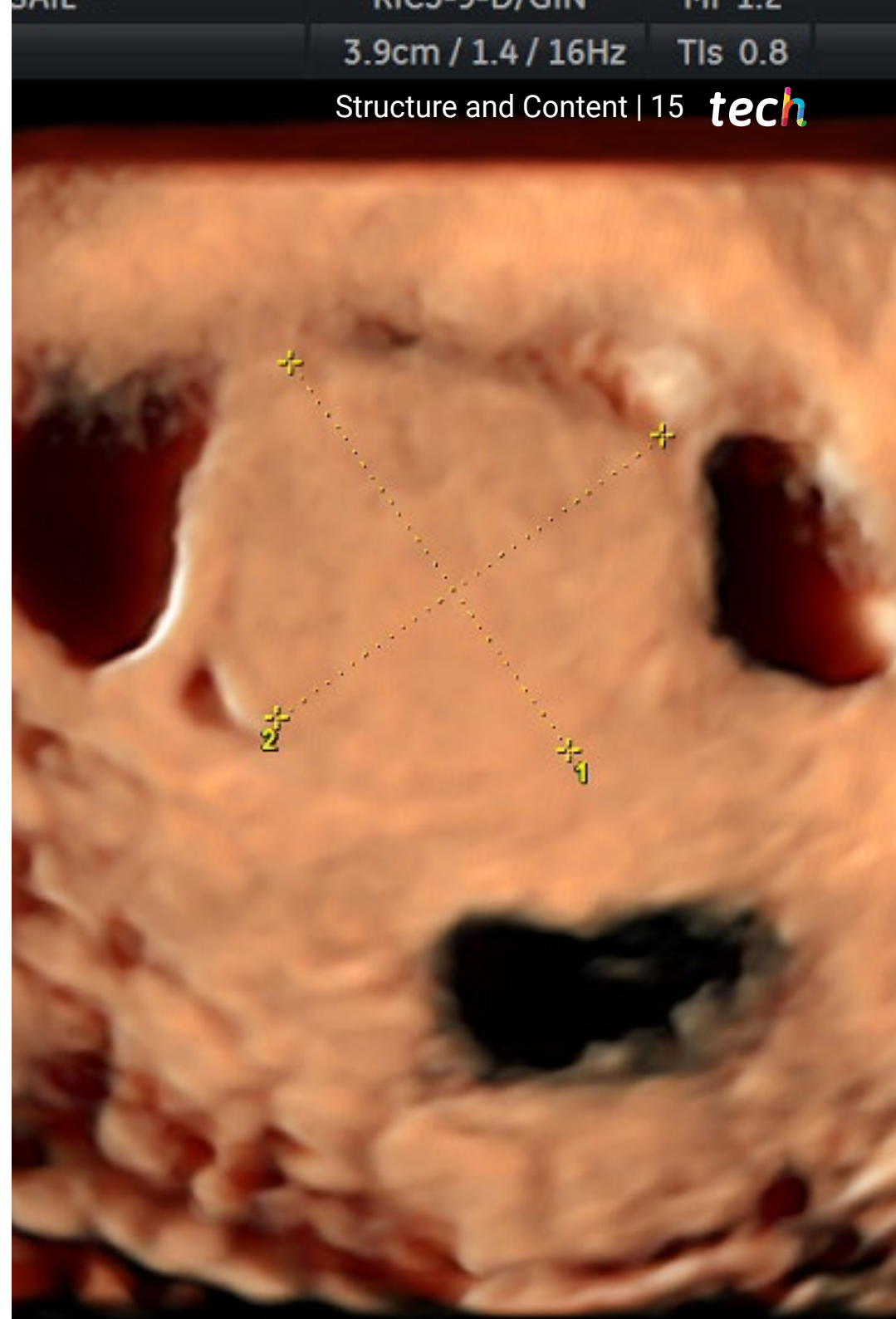
- Scientific Director of IBBiotech. Dr. in Biology. Specialist in Medical Genetics.

### Dr. Ortiz Salcedo, Jose Antonio

- Biochemist Molecular Biologist. IBiotech

### Dr. Morales Sabater, Ruth

- Pharmacist, Specialist in Genetics and Molecular Biology. IBiotech



04

# Structure and Content

The structure of the contents has been designed by the best professionals in the field of endometriosis, with extensive experience and recognized prestige in the profession, backed by the volume of cases reviewed, studied and intervened in, and with ample command of new technologies applied to teaching.





“

*This Postgraduate Certificate contains the most complete and up-to-date scientific program on the market, which makes it your best study option"*

## Module 1. Diagnostic Approaches to Endometriosis

- 1.1. Glycoproteins: Tumor Markers
  - 1.1.1. CA125
- 1.2. Growth Factors and Angiogenesis
  - 1.2.1. VEGF
- 1.3. Antibodies
- 1.4. Interleukins and Cytokines
- 1.5. Hormones
  - 1.5.1. Aromatase
- 1.6. Urinary Biomarkers
- 1.7. Study of "Omics" as Biomarkers
  - 1.7.1. Proteomics
  - 1.7.2. Metabolomics
- 1.8. Micro RNA
- 1.9. Long non Coding RNA
- 1.10. Study of the Genome. Associated Polymorphisms





“

*A unique, key, and decisive master's degree experience to boost your professional development”*

05

# Methodology

This training program provides you with a different way of learning. Our methodology uses a cyclical learning approach: ***Re-learning***.

This teaching system is used, for example, in the most prestigious medical schools in the world, and major publications such as the ***New England Journal of Medicine*** have ***considered it to be one of the most effective***.



“

*Discover Re-learning, a system that abandons conventional linear learning, to take you through cyclical teaching systems: a way of learning that has proven to be extremely effective, especially in subjects that require memorization"*

## At TECH we use the Case Method

What should a professional do in a given situation? Throughout the program, students will face multiple simulated clinical cases, based on real patients, in which they will have to do research, establish hypotheses, and ultimately resolve the situation. There is abundant scientific evidence on the effectiveness of the method. Specialists learn better, faster, and more sustainably over time.

*With TECH you can experience a way of learning that is shaking the foundations of traditional universities around the world.*



According to Dr. Gervas, the clinical case is the annotated presentation of a patient, or group of patients, which becomes a "case", an example or model that illustrates some peculiar clinical component, either because of its teaching potential or because of its uniqueness or rarity. It is essential that the case is based on current professional life, trying to recreate the real conditions in the physician's professional practice.

“

*Did you know that this method was developed in 1912 at Harvard for law students? The case method consisted of presenting students with real-life, complex situations for them to make decisions and justify their decisions on how to solve them. In 1924, Harvard adopted it as a standard teaching method”*

The effectiveness of the method is justified by four fundamental achievements:

1. Students who follow this method not only grasp concepts, but also develop their mental capacity by evaluating real situations and applying their knowledge.
2. Learning is solidly translated into practical skills that allow the student to better integrate into the real world.
3. Ideas and concepts are understood more efficiently, given that the example situations are based on real-life.
4. Students like to feel that the effort they put into their studies is worthwhile. This then translates into a greater interest in learning and more time dedicated to working on the course.



## Re-Learning Methodology

At TECH we enhance the Harvard case method with the best 100% online teaching methodology available: Re-learning.

This University is the first in the world to combine the study of clinical cases with a 100% online learning system based on repetition, combining a minimum of 8 different elements in each lesson, a real revolution with respect to the simple study and analysis of cases.

*Professionals will learn through real cases and by resolving complex situations in simulated learning environments. These simulations are developed using state-of-the-art software to facilitate immersive learning.*





At the forefront of world teaching, the Re-learning method has managed to improve the overall satisfaction levels of professionals who complete their studies, with respect to the quality indicators of the best Spanish-speaking online university (Columbia University).

Over 250,000 physicians have been trained using this methodology, with unprecedented success in all clinical specialties regardless of surgical load. This teaching methodology is developed in a highly demanding environment, with a university student body of high socio-economic profile and an average age of 43.5 years.

*Re-learning will allow you to learn with less effort and better performance, involving you more in your specialization, developing a critical mindset, defending arguments, and contrasting opinions: a direct equation to success.*

In our program, learning is not a linear process, but rather a spiral (learn, unlearn, forget, and re-learn). Therefore, we combine each of these elements concentrically.

The overall score obtained by TECH's learning system is 8.01, according to the highest international standards.



This program offers the best educational material, prepared with professionals in mind:



#### Study Material

All teaching material is produced by the specialists who teach the course, specifically for the course, so that the teaching content is highly specific and precise.

These contents are then applied to the audiovisual format, to create the TECH online working method. All this, with the latest techniques that offer high quality pieces in each and every one of the materials that are made available to the student.



#### Surgical Techniques and Procedures on Video

TECH introduces students to the latest techniques, the latest educational advances and to the forefront of current medical techniques. All of this in direct contact with students and explained in detail so as to aid their assimilation and understanding. And best of all, you can watch the videos as many times as you like.



#### Interactive Summaries

The TECH team presents the contents attractively and dynamically in multimedia lessons that include audio, videos, images, diagrams, and concept maps in order to reinforce knowledge.

This exclusive multimedia content presentation training Exclusive system was awarded by Microsoft as a "European Success Story".



#### Additional Reading

Recent articles, consensus documents and international guidelines, among others. In TECH's virtual library, students will have access to everything they need to complete their course.





#### Expert-Led Case Studies and Case Analysis

Effective learning ought to be contextual. Therefore, TECH presents real cases in which the expert will guide students, focusing on and solving the different situations: a clear and direct way to achieve the highest degree of understanding.



#### Testing & Re-testing

The student's knowledge is periodically assessed and re-assessed throughout the program, through evaluative and self-evaluative activities and exercises: in this way, students can check how they are doing in terms of achieving their goals.



#### Classes

There is scientific evidence on the usefulness of learning by observing experts: The system termed Learning from an Expert strengthens knowledge and recall capacity, and generates confidence in the face of difficult decisions in the future.



#### Quick Action Guides

TECH offers the most relevant contents of the course in the form of worksheets or quick action guides. A synthetic, practical, and effective way to help students progress in their learning.



# 06 Certificate

In addition to the most rigorous and up-to-date training, the **Postgraduate Certificate in Diagnostic Approaches to Endometriosis** guarantees access to a Postgraduate Certificate issued by **TECH Technological University**.



“

*Successfully complete this specialisation  
and receive your university degree without  
travel or laborious paperwork”*

This **Postgraduate Certificate in Diagnostic Approaches to Endometriosis** contains the scientific and most complete and up-to-date educational program on the market.

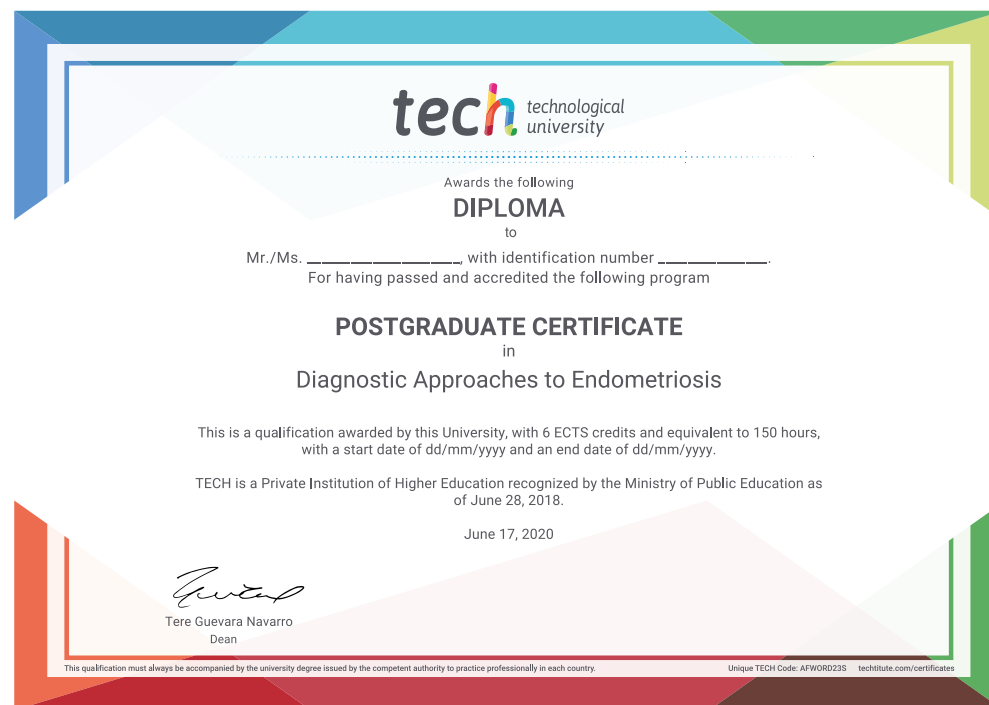
After passing the evaluation, the student will receive a **Postgraduate Certificate** from **TECH Technological University**.

This degree contributes to the academic development of the professional and adds a high university curricular value to their training. It is 100% valid in all competitive examinations, labour exchanges and professional career evaluation committees.

Title: **Postgraduate Certificate in Diagnostic Approaches to Endometriosis**

ECTS: **6**

Official Number of Hours: **150 hours**.



\*Apostille Convention. In the event that the student wishes to have their paper diploma issued with an apostille, TECH EDUCATION will make the necessary arrangements to obtain it, at an additional cost.

future  
health confidence people  
education information tutors  
guarantee accreditation teaching  
institutions technology learning  
community commitment  
personalized service innovation  
knowledge present  
development languages  
virtual classroom



## Postgraduate Certificate

### Diagnostic Approaches to Endometriosis

Course Modality: Online

Duration: 6 weeks

Certificate: TECH Technological University

6 ECTS Credits

Teaching Hours: 150 hours

# Postgraduate Certificate

## Diagnostic Approaches to Endometriosis