

Postgraduate Certificate

Benign/Malignant Palpebral Lesions and Reconstructive Surgery





Postgraduate Certificate Benign/Malignant Palpebral Lesions and Reconstructive Surgery

- » Modality: online
- » Duration: 6 weeks
- » Certificate: TECH Technological University
- » Dedication: 16h/week
- » Schedule: at your own pace
- » Exams: online

Website: www.techtitute.com/us/medicine/postgraduate-certificate/benign-malignant-palpebral-lesions-reconstructive-surgery

Index

01

Introduction

p. 4

02

Objectives

p. 8

03

Course Management

p. 12

04

Structure and Content

p. 16

05

Methodology

p. 20

06

Certificate

p. 28

01

Introduction

In the approach to Oculoplastic Reconstructive Surgery it is essential to have an early and accurate diagnosis in Palpebral Lesions, both benign and malignant, since the final aesthetic and functional result depends on it. This drives the specialist to maintain a pace of constant updating and deepening in the area, since the necessary tools or techniques are not always available to deal with the most complex cases. This program presents, precisely, the most current scientific data and postulates, with the professional rigor of a teaching staff with extensive experience in the field. All this in a 100% online format, comfortable and accessible, without restrictions of pre-set schedules or face-to-face classes, making it compatible with the most demanding personal and professional obligations.





“

Enroll in this Postgraduate Certificate and gain access to the latest developments in the field of Benign and Malignant Palpebral Lesions"

Palpebral lesions comprise an extensive field of periocular dermatology, which is essential for the specialist to know in detail its characteristics. This type of lesions, most of them benign, can be approached with a superior effectiveness by having an accurate diagnosis, the latter being a key and differential factor.

Since this is a broad field with a constant scientific evolution, TECH has collected in this Postgraduate Certificate an exhaustive deepening so that the specialist can be updated on aspects such as the need to perform biopsy, whether or not to associate procedures such as Mohs surgery and even intraoperative anatomy. All this supported by the latest scientific evidence and a teaching staff of the highest professional and academic level.

The dynamic material to which the specialist will have access virtually will be of great help to know and assimilate all the technical issues of this constantly advancing branch of ophthalmology. They will have the opportunity to study real cases and to demonstrate the results of the techniques taught, with a clear support in the contextualization of the entire syllabus. Counting with an extension of 6 weeks, the specialist will be able to investigate through the numerous videos in detail, complementary readings and self-knowledge exercises available in all the topics provided.

This **Postgraduate Certificate in Benign/Malignant Palpebral Lesions and Reconstructive Surgery** contains the most complete and updated scientific program on the market. Its most outstanding features are

- ◆ The development of case studies presented by Ophthalmology experts
- ◆ The graphic, schematic, and practical contents with which they are created, provide scientific and practical information on the disciplines that are essential for professional practice
- ◆ Practical exercises where self-assessment can be used to improve learning
- ◆ Its special emphasis on innovative methodologies
- ◆ Theoretical lessons, questions to the expert, debate forums on controversial topics, and individual reflection assignments
- ◆ Content that is accessible from any fixed or portable device with an Internet connection



Learn the latest in Palpebral Lesions and reconstructive techniques supported by a comprehensive and accessible program, where you decide how and when to study it"

“

One of the most common methods to remove a skin cancer is Mohs Surgery, so in this Postgraduate Certificate you will access the latest developments in this and other procedures 100% online”

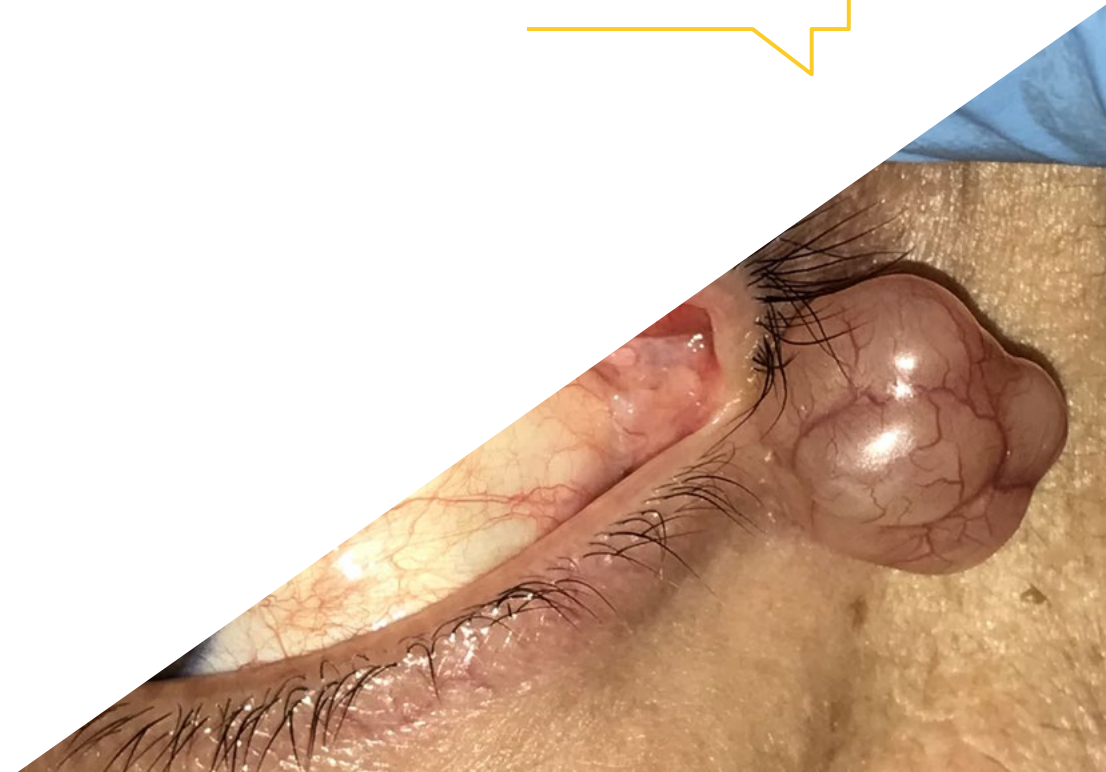
Incorporate into your daily practice the most important developments in the surgical management of these types of tumors, as well as the latest trends in palpebral and periocular reconstruction.

Study from anywhere in the world and stay up to date on the latest evidence in the area of Benign and Malignant Palpebral Lesions.

The program's teaching staff includes professionals from the sector who contribute their work experience to this educational program, as well as renowned specialists from leading societies and prestigious universities.

Its multimedia content, developed with the latest educational technology, will provide the professional with situated and contextual learning, i.e., a simulated environment that will provide an immersive education programmed to learn in real situations.

The design of this program focuses on problem-based learning, through which the professional must try to solve the different professional practice situations that arise during the academic year. For this purpose, the student will be assisted by an innovative interactive video system created by renowned experts.



02 Objectives

The objective of this Postgraduate Certificate is that specialists interested in palpebral lesions and reconstructive surgery of the palpebral area and its adjacent areas, have access to the most comprehensive information and are updated with the best educational methods. The approach of this course is very practical, focusing on examinations and surgical approach. Throughout the 6 weeks that this program lasts, the specialists who take it will have assimilated all the technical information it contains based on clear objectives that TECH sets specifically for this plan.



“

Take advantage of all the tools that TECH puts at your fingertips and get up to date in the most advanced surgical techniques for Palpebral Lesions”



General Objectives

- ◆ Delve into the anatomy and physiology of the eyelids, orbit and lacrimal ducts
- ◆ Know in detail the physiology of the eyelids, orbit and lacrimal ducts and their functions
- ◆ Know in depth the latest exploratory techniques for consultation, for its application in the clinic
- ◆ In-depth knowledge of eyelid and eyelashes malpositioning diseases, their diagnosis and clinical management
- ◆ Manage the diagnosis of benign and malignant lesions of the eyelids, as well as palpebral and periocular reconstruction techniques



You can rely on a 100% online methodology that allows you to continue to deepen and update your knowledge at your own pace, without being tied to fixed schedules of any kind"





Specific Objectives

- ◆ Know the anatomy of the skin and periocular appendages
- ◆ Delve into the differential diagnosis of palpebral lesions
- ◆ Learn to identify the main benign/malignant tumors of the epidermis and skin appendages, as well as pigmented lesions and other less frequent tumors (vascular,.)
- ◆ Have a thorough knowledge of the most commonly used biopsy techniques. Mohs Surgery. Cold Biopsy
- ◆ Delve into the repair of anterior lamella defects and management of facial skin grafts
- ◆ Understand the fundamentals of the main techniques for repair of full-thickness defects of less than 50%, between 50% and 75% and greater than 75%

03

Course Management

TECH has a group of highly qualified health professionals to teach this Postgraduate Certificate. The best ophthalmologists with experience in Oculoplastic Surgery will support the specialist in the assimilation of all the technical details involved in the study and treatment of Palpebral Lesions, as well as the most appropriate and innovative ways to approach reconstructive surgery of the periocular area. This program is designed for the physician to know all the news and details of the anatomy and intervention of this type of lesions together with the most recognized specialists.



“

*Delve in depth with the best specialists,
100% committed to providing you with
the most rigorous and current content"*

Management



Ms. Ibáñez Flores, Nuria

- ◆ Head of the Oculoplastics Department at the ICR of Barcelona (Institut Català de Retina)
- ◆ Adjunct professor of the medical degree at the UIC (International University of Catalonia)
- ◆ Director and coordinator of the surgical master's degree of the UIC (International University of Catalonia) in Oculoplastics, Orbit and Lacrimal Ducts
- ◆ Reviewer of the Archives of the Spanish Society of Ophthalmology
- ◆ Member of the Spanish Society of Ocular and Orbital Plastic Surgery (SECPOO)
- ◆ Responsible and coordinator of the interhospital sessions of Oculoplastics taught at ICR
- ◆ Doctor in Medicine and Surgery from the Autonomous University of Barcelona
- ◆ Degree in Medicine and Surgery from the University of Barcelona, Bellvitge Teaching Unit



Dr. Pascual González, Macarena

- ◆ Medical Specialist in Ophthalmology at General University Hospital Gregorio Marañón. Section of Oculoplasty, Tear Ducts and Orbit
- ◆ Collaborating lecturer in the subject of Ophthalmology at the Complutense University of Madrid
- ◆ Member of the Spanish Society of Ocular and Orbital Plastic Surgery (SECPOO)
- ◆ Fellow of European Board of Ophthalmology (FEBO)
- ◆ Degree in Medicine from the University of Malaga
- ◆ Specialist in Ophthalmology at the General University Hospital Gregorio Marañón Master in Aesthetic, Regenerative and Anti-Aging Medicine at the Complutense University of Madrid



Professors

Dr. Sánchez España, Juan Carlos

- ◆ Assistant of the Ophthalmology Service of the Clinical Hospital of Barcelona
- ◆ Fellowship in Oculoplastic Surgery, IMO, Barcelona, Spain
- ◆ Doctor of Medicine (PhD), UH, Huelva, Spain
- ◆ Physician UNAB, Bucaramanga, Colombia
- ◆ Specialist in Ophthalmology, Juan Ramón Jiménez Hospital, Huelva, Spain
- ◆ Master's Degree in Research Methodology in Health Sciences

04

Structure and Content

This program has an agenda designed to cover in detail the anatomy of the palpebral lesions and all possible conditions that they entail. Throughout 6 weeks there is a detailed description of the diagnostic procedures and all the corresponding tests, such as several types of biopsy. The specialists who start this Postgraduate Certificate will also learn the latest techniques of reconstructive surgery of the eyelid structures. All this with the help of the best virtual education techniques and an educational methodology of the first academic level.



“

This Postgraduate Certificate will be ideal for you to learn the latest evidence in Biopsy Techniques and Differential Diagnosis of Palpebral Lesions in an efficient and functional way"

Module 1. Benign/Malignant Palpebral Lesions and Reconstructive Surgery

- 1.1. Skin Anatomy and Appendages
- 1.2. Differential Diagnosis of Palpebral Lesions.
- 1.3. Tumors of the Epidermis
- 1.4. Tumors of the Cutaneous Appendages
- 1.5. Pigmented Lesions
- 1.6. Other Palpebral Tumors
 - 1.6.1. Vascular
 - 1.6.2. Fibrous
 - 1.6.3. Muscular
 - 1.6.4. Numerals
 - 1.6.5. Perineural
 - 1.6.6. Lipomatous
 - 1.6.7. Cartilaginous
 - 1.6.8. Lymphoid
 - 1.6.9. Hamartomatous
- 1.7. Biopsy Techniques
 - 1.7.1. Mohs Surgery
 - 1.7.2. Intraoperative Pathological Anatomy
 - 1.7.3. Cold Biopsy
- 1.8. Repair of Anterior Lamellar Defects and Management of Facial Skin Grafts
- 1.9. Repair of Full-Thickness Defects Less Than 50%, 50% to 75% and Greater Than 75%
- 1.10. Assessment of Oncologic Prognosis





“

Delves into the latest news and evidence in Palpebral Lesions and Reconstructive Surgery with detailed videos, complementary readings and more useful didactic resources”

05

Methodology

This academic program offers students a different way of learning. Our methodology uses a cyclical learning approach: **Relearning**.

This teaching system is used, for example, in the most prestigious medical schools in the world, and major publications such as the **New England Journal of Medicine** have considered it to be one of the most effective.





“

Discover Relearning, a system that abandons conventional linear learning, to take you through cyclical teaching systems: a way of learning that has proven to be extremely effective, especially in subjects that require memorization"

At TECH we use the Case Method

What should a professional do in a given situation? Throughout the program, students will face multiple simulated clinical cases, based on real patients, in which they will have to do research, establish hypotheses, and ultimately resolve the situation. There is an abundance of scientific evidence on the effectiveness of the method. Specialists learn better, faster, and more sustainably over time.

With TECH you will experience a way of learning that is shaking the foundations of traditional universities around the world.



According to Dr. Gervas, the clinical case is the annotated presentation of a patient, or group of patients, which becomes a "case", an example or model that illustrates some peculiar clinical component, either because of its teaching power or because of its uniqueness or rarity. It is essential that the case is based on current professional life, trying to recreate the real conditions in the physician's professional practice.

“

Did you know that this method was developed in 1912, at Harvard, for law students? The case method consisted of presenting students with real-life, complex situations for them to make decisions and justify their decisions on how to solve them. In 1924, Harvard adopted it as a standard teaching method”

The effectiveness of the method is justified by four fundamental achievements:

1. Students who follow this method not only achieve the assimilation of concepts, but also a development of their mental capacity, through exercises that evaluate real situations and the application of knowledge.
2. Learning is solidly translated into practical skills that allow the student to better integrate into the real world.
3. Ideas and concepts are understood more efficiently, given that the example situations are based on real-life.
4. Students like to feel that the effort they put into their studies is worthwhile. This then translates into a greater interest in learning and more time dedicated to working on the course.



Relearning Methodology

At TECH we enhance the case method with the best 100% online teaching methodology available: Relearning.

This university is the first in the world to combine the study of clinical cases with a 100% online learning system based on repetition, combining a minimum of 8 different elements in each lesson, a real revolution with respect to the mere study and analysis of cases.

Professionals will learn through real cases and by resolving complex situations in simulated learning environments. These simulations are developed using state-of-the-art software to facilitate immersive learning.



At the forefront of world teaching, the Relearning method has managed to improve the overall satisfaction levels of professionals who complete their studies, with respect to the quality indicators of the best online university (Columbia University).

With this methodology, more than 250,000 physicians have been trained with unprecedented success in all clinical specialties regardless of surgical load. Our pedagogical methodology is developed in a highly competitive environment, with a university student body with a strong socioeconomic profile and an average age of 43.5 years old.

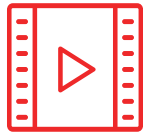
Relearning will allow you to learn with less effort and better performance, involving you more in your specialization, developing a critical mindset, defending arguments, and contrasting opinions: a direct equation to success.

In our program, learning is not a linear process, but rather a spiral (learn, unlearn, forget, and re-learn). Therefore, we combine each of these elements concentrically.

The overall score obtained by TECH's learning system is 8.01, according to the highest international standards.



This program offers the best educational material, prepared with professionals in mind:



Study Material

All teaching material is produced by the specialists who teach the course, specifically for the course, so that the teaching content is highly specific and precise.

These contents are then applied to the audiovisual format, to create the TECH online working method. All this, with the latest techniques that offer high quality pieces in each and every one of the materials that are made available to the student.



Surgical Techniques and Procedures on Video

TECH introduces students to the latest techniques, the latest educational advances and to the forefront of current medical techniques. All of this in direct contact with students and explained in detail so as to aid their assimilation and understanding. And best of all, you can watch the videos as many times as you like.



Interactive Summaries

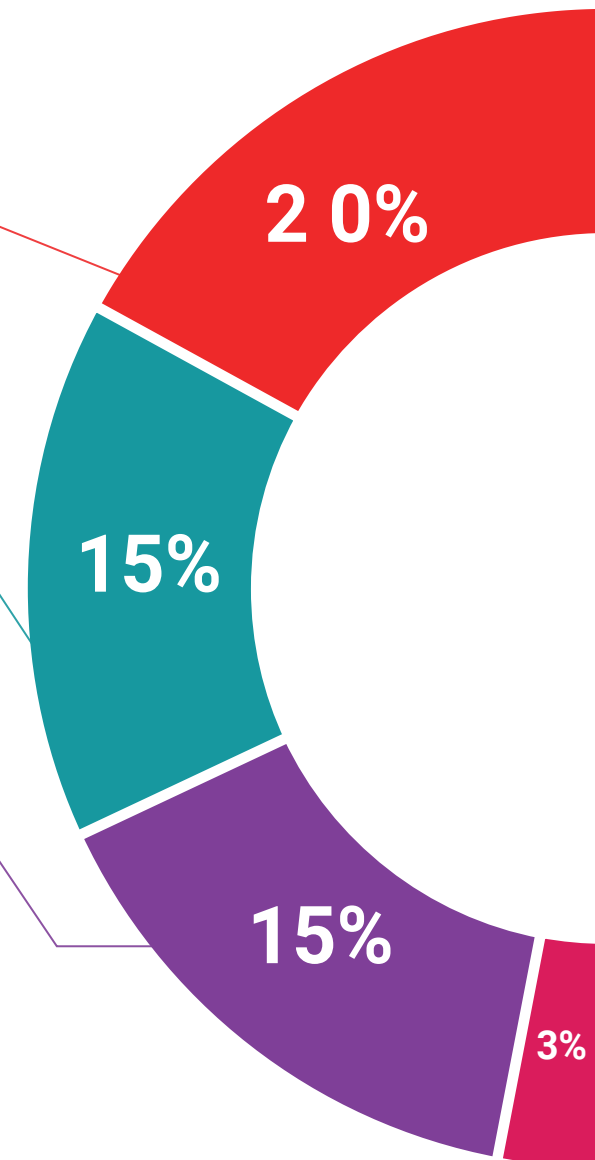
The TECH team presents the contents attractively and dynamically in multimedia lessons that include audio, videos, images, diagrams, and concept maps in order to reinforce knowledge.

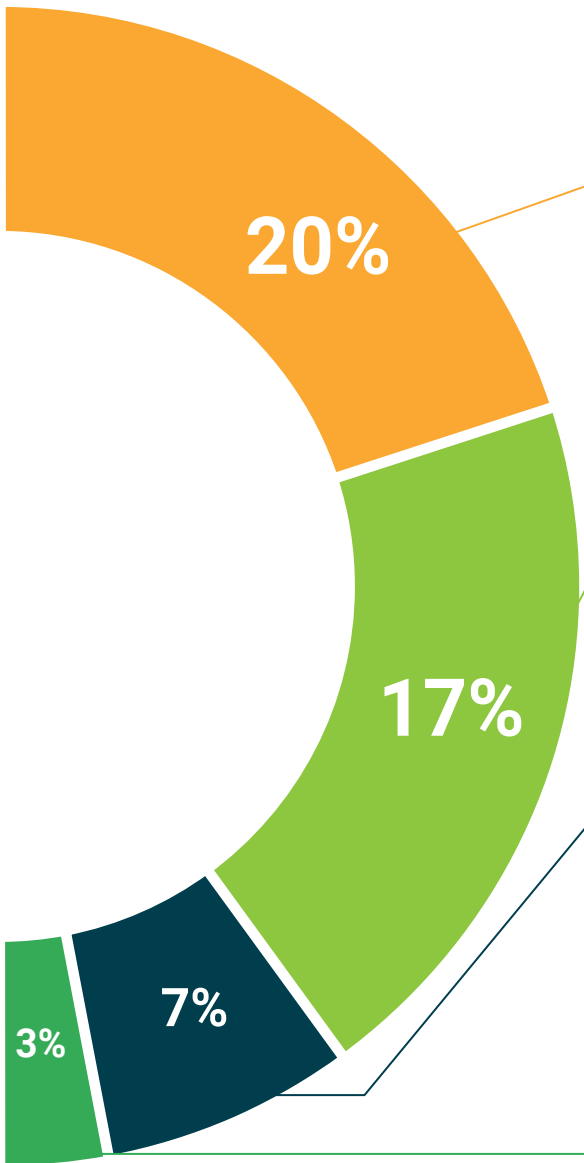
This exclusive educational system for presenting multimedia content was awarded by Microsoft as a "European Success Story".



Additional Reading

Recent articles, consensus documents and international guidelines, among others. In TECH's virtual library, students will have access to everything they need to complete their course.





Expert-Led Case Studies and Case Analysis

Effective learning ought to be contextual. Therefore, TECH presents real cases in which the expert will guide students, focusing on and solving the different situations: a clear and direct way to achieve the highest degree of understanding.



Testing & Retesting

We periodically evaluate and re-evaluate students' knowledge throughout the program, through assessment and self-assessment activities and exercises, so that they can see how they are achieving their goals.



Classes

There is scientific evidence on the usefulness of learning by observing experts. The system known as Learning from an Expert strengthens knowledge and memory, and generates confidence in future difficult decisions.



Quick Action Guides

TECH offers the most relevant contents of the course in the form of worksheets or quick action guides. A synthetic, practical, and effective way to help students progress in their learning.



06 Certificate

The Postgraduate Certificate in Benign/Malignant Palpebral Lesions and Reconstructive Surgery guarantees students, in addition to the most rigorous and up-to-date education, access to a Postgraduate Certificate issued by TECH Technological University.





“

Successfully complete this program and receive your university qualification without having to travel or fill out laborious paperwork”

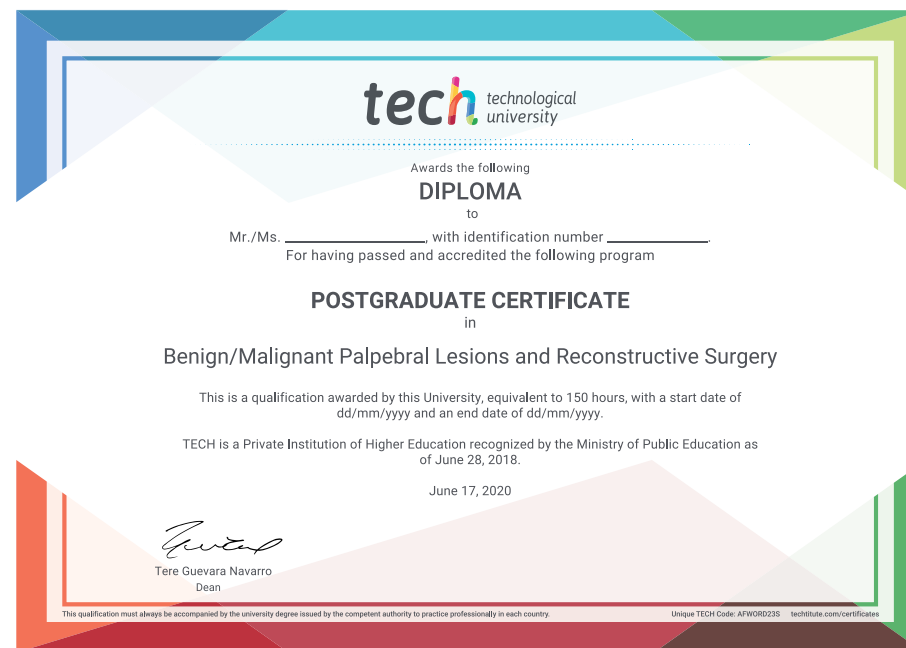
This **Postgraduate Certificate in Benign/Malignant Palpebral Lesions and Reconstructive Surgery** contains the most complete and up-to-date scientific on the market.

After the student has passed the assessments, they will receive their corresponding **Postgraduate Certificate** issued by **TECH Technological University** via tracked delivery*.

The diploma issued by **TECH Technological University** will reflect the qualification obtained in the Postgraduate Certificate, and meets the requirements commonly demanded by labor exchanges, competitive examinations, and professional career evaluation committees.

Title: **Postgraduate Certificate in Benign/Malignant Palpebral Lesions and Reconstructive Surgery**

Official N° of Hours: **150 h.**



*Apostille Convention. In the event that the student wishes to have their paper diploma issued with an apostille, TECH EDUCATION will make the necessary arrangements to obtain it, at an additional cost.

future
health confidence people
education information tutors
guarantee accreditation teaching
institutions technology learning
community commitment
personalized service innovation
knowledge present
development language
virtual classroom

tech technological
university

Postgraduate Certificate
Benign/Malignant
Palpebral Lesions and
Reconstructive Surgery

- » Modality: online
- » Duration: 6 weeks
- » Certificate: TECH Technological University
- » Dedication: 16h/week
- » Schedule: at your own pace
- » Exams: online

Postgraduate Certificate

Benign/Malignant Palpebral Lesions and Reconstructive Surgery

