

Hybrid Professional Master's Degree

Integrative Medicine and Health





Hybrid Professional Master's Degree Integrative Medicine and Health

Modality: Hybrid (Online + Clinical Internship)

Duration: 12 months

Certificate: TECH Technological University

Teaching Hours: 1,620 h

Website: www.techtute.com/us/medicine/hybrid-professional-master-degree/hybrid-professional-master-degree-integrative-medicine-health

Index

01

Introduction

p. 4

02

Why Study this Hybrid
Professional Master's Degree?

p. 8

03

Objectives

p. 12

04

Skills

p. 18

05

Course Management

p. 22

06

Educational Plan

p. 40

07

Clinical Internship

p. 46

08

Where Can I Do the Clinical
Internship?

p. 52

09

Methodology

p. 56

10

Certificate

p. 64

01

Introduction

Advances in Integrative Medicine have allowed millions of specialists around the world to increase the treatment possibilities for their patients, offering them natural and highly beneficial alternatives for their health. However, for many professionals, keeping up with the evolution of this science is a complex task, which is why TECH and its team of experts have decided to design this degree. It is a 100% online program that gathers in an exhaustive and intensive syllabus, the most up-to-date information in the sector and culminates with a clinical internship in a prestigious clinical center.



“

TECH presents a program that combines, in a unique 100% online degree, the best theoretical and additional content with the practice in a specialized center”

The growing interest of millions of specialists in Integrative Medicine has made it possible to develop increasingly specialized and effective techniques and strategies for approaching clinical cases. The use of its therapies in patients suffering from chronic diseases such as cancer, arthritis or cystic fibrosis who until then received merely palliative treatments, aimed at their improvement and even cure, and the gratifying results that have been obtained, place this specialty in a differentiated way in the medical panorama.

For this reason, TECH and its team of experts have considered it necessary to develop this Hybrid Professional Master's Degree in Integrative Medicine and Health, so that interested professionals can learn in detail the latest scientific evidence in the sector. This is a qualification that combines theory with practice, making it a unique opportunity for the graduate to increase and update their knowledge in a specialized way, and then be able to apply it in reality through an internship in a prestigious clinic.

This program, developed over 12 months and distributed in 1,620 hours, will give them the keys to get up-to-date in the management of patients through the use of the most effective strategies of Integrative Medicine, delving into the different perspectives in their approach, in the pathophysiology of diseases and their recommendations, and in the keys of Environmental Medicine to create optimal environments for the restoration of health.

All this, through the best theoretical content based on the latest developments in the area. In addition, the graduate will have access to high quality complementary material that includes detailed videos prepared by the teaching staff, research articles and additional readings to delve into those aspects that the specialist considers most relevant to their medical practice. Finally, they will have 120 hours of clinical internship in a prestigious medical center where they will be able to actively participate in the management of patients. For this purpose, they will be accompanied by a tutor who will ensure that the experience is as enriching as possible.

This **Hybrid Professional Master's Degree in Integrative Medicine and Health** contains the most complete and up-to-date scientific program on the market. The most important features include:

- ♦ Development of more than 100 clinical cases presented by specialists in Integrative Medicine
- ♦ The graphic, schematic, and practical contents with which they are created, provide scientific and practical information on the disciplines that are essential for professional practice
- ♦ Study of the best techniques for approaching palliative patients
- ♦ Comprehensive systematized action plans for common and special situations faced by the specialist in a clinical service
- ♦ Presentation of practical workshops on patient management and treatment strategies
- ♦ An algorithm-based interactive learning system for decision-making in the clinical situations presented throughout the course
- ♦ Practice guidelines on the approach to different clinical situations
- ♦ With a special emphasis on evidence-based medicine and research methodologies in integrative techniques
- ♦ All of this will be complemented by theoretical lessons, questions to the expert, debate forums on controversial topics, and individual reflection assignments
- ♦ Content that is accessible from any fixed or portable device with an Internet connection
- ♦ Furthermore, you will be able to carry out a clinical internship in one of the best hospitals

“ *A qualification in which you will find the keys to the combination of traditional, conventional and complementary medicine in order to offer your patients more alternatives in their treatments”*

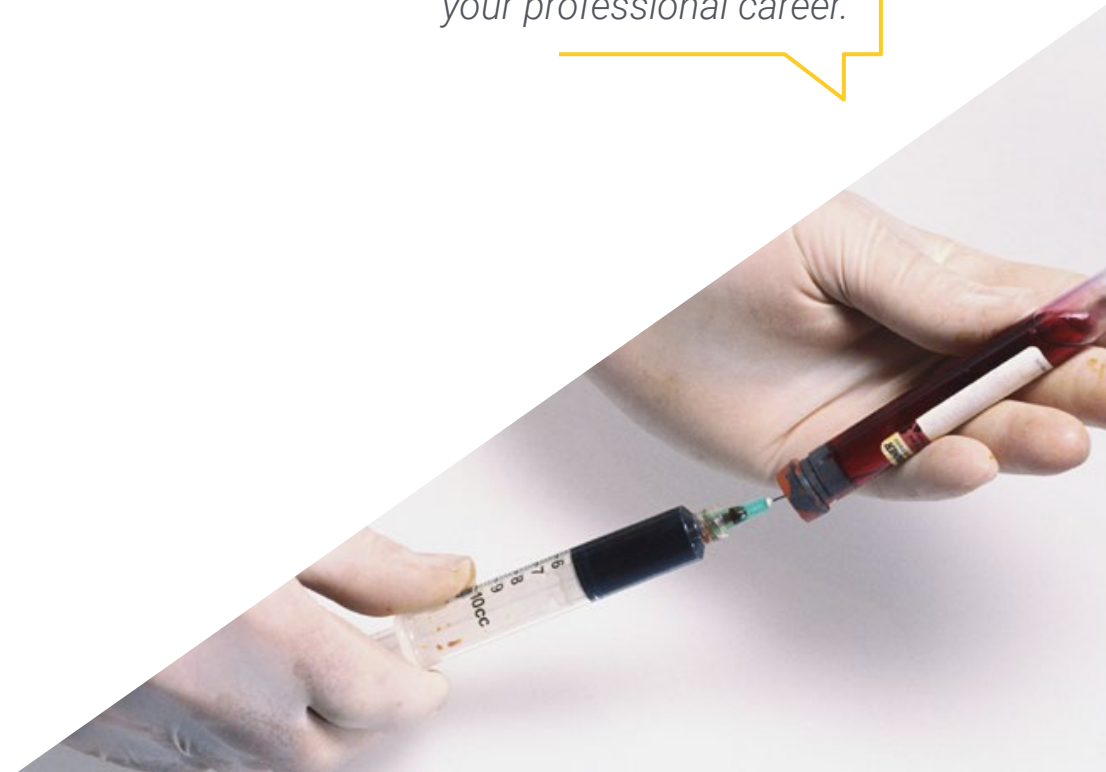
In this Professional Master's Degree proposal, of a professionalizing nature and blended learning modality, the program is intended to update nursing professionals who develop their functions in high performance centers, clinical or hospital centers, and who require a high level of qualification. The content is based on the latest scientific evidence and is organized in a didactic way to integrate theoretical knowledge into nursing practice. The theoretical-practical elements allow professionals to update their knowledge and help them to make the right decisions in patient care.

The multimedia content developed with the latest educational technology will provide the professional with situated and contextual learning, i.e., a simulated environment that will provide an immersive education program to learn in real situations.

This program's design is based on Problem Based Learning, by means of which the student must try to solve different professional practice situations that will be presented throughout the program. For this purpose, the student will be assisted by an innovative interactive video system created by renowned experts.

The best option to sharpen your medical skills in Integrative Medicine you will find, without a doubt, in this Hybrid Professional Master's Degree.

You will have access to hundreds of hours of detailed videos, research articles and additional reading to delve deeper into those aspects that are most relevant to your professional career.



02

Why Study this Hybrid Professional Master's Degree?

Integrative Medicine is composed of various techniques and working tools that are constantly up-to-date. All of them are essential to provide personalized care to patients with various pathologies. TECH wants to turn its students into great experts in these matters and therefore has composed an excellent program that, in addition to providing them with the theoretical domain of this field, will facilitate their access to highly prestigious companies to develop their practical knowledge.



“

TECH offers you a unique learning opportunity in which you will be able to join prestigious hospital centers to acquire a complete knowledge of the most integrative techniques in Integrative Medicine and Health"

tech 10 | Why Study this Hybrid Professional Master's Degree?

1. Updating from the latest technology available

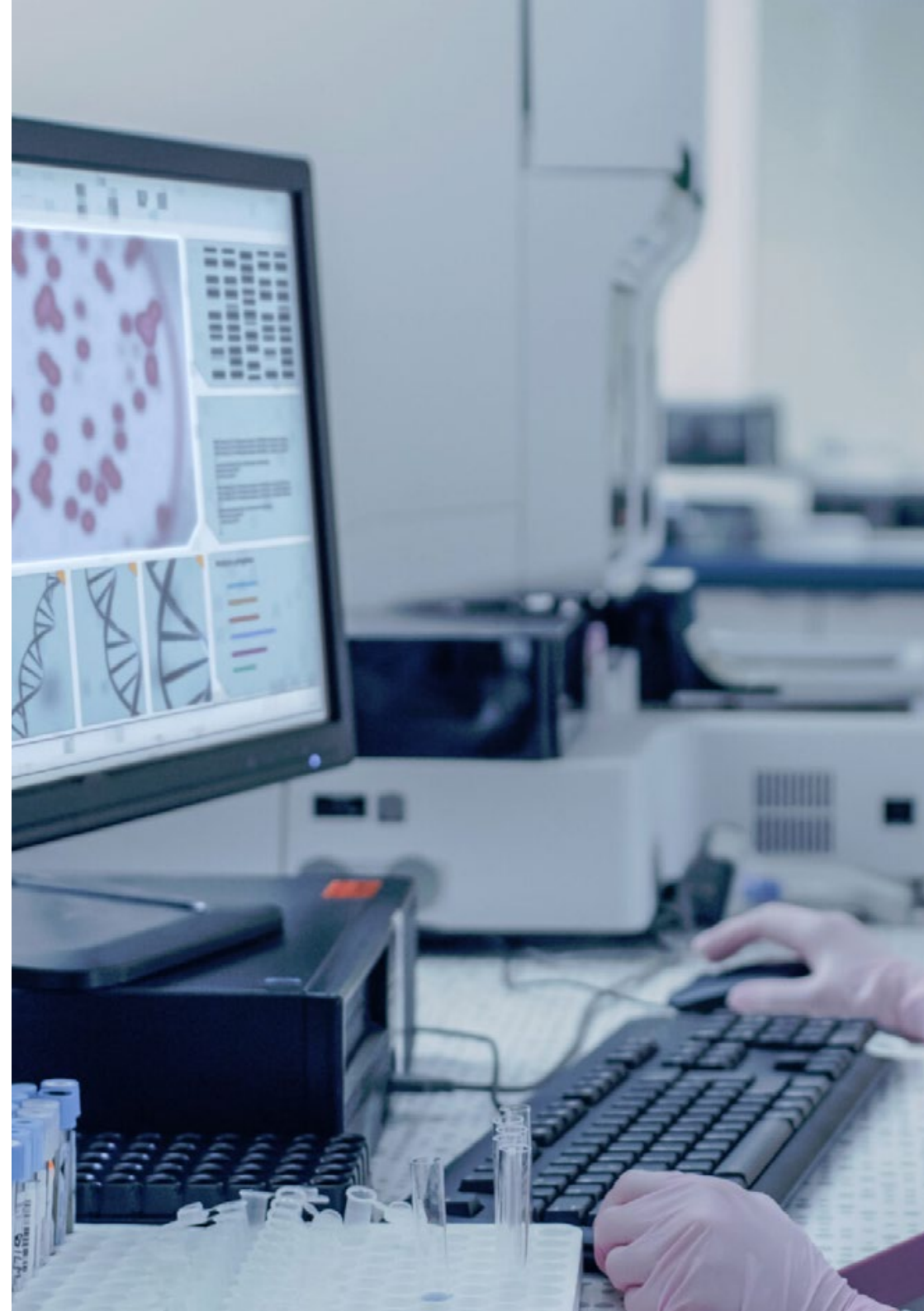
Integrative Medicine uses different equipment to offer wellness to patients during their recovery. It also applies natural methods to develop therapies to treat chronic diseases such as cancer, arthritis or cystic fibrosis.

2. Gaining In-Depth Knowledge from the Experience of Top Specialists

TECH provides a personalized teaching guide in all educational phases of this degree. For learning the theoretical framework of this Hybrid Professional Master's Degree, students have the best teaching staff at their disposal to clarify their doubts and concepts of interest. On the other hand, during the professional internship, in a renowned hospital center, the student will have a designated tutor who will help them to insert themselves holistically in the dynamics of care.

3. Entering First-Class Clinical Environments

TECH carefully selects all available centers for Internship Programs. Thanks to this, the specialist will have guaranteed access to a prestigious environment in the healthcare area. In this way, they will be able to see the day-to-day work of a demanding, rigorous and exhaustive sector, always applying the latest theses and scientific postulates in its work methodology.





4. Combining the Best Theory with State-of-the-Art Practice

This program provides its students with the assimilation of the most up-to-date theoretical contents of the Integrative Medicine discipline, through a 100% online education and without fixed schedules. At the same time, students will be able to develop the assimilated knowledge in a practical way in a highly prestigious health facility during 3 weeks of professional practice.

5. Expanding the Boundaries of Knowledge

This academic program offers its students access to centers of renowned medical trajectory. This way, each student can expand the frontiers of their knowledge from the standards applied in different latitudes. This is only possible thanks to the network of contacts and collaborations of TECH, the largest digital university in the world.

“

You will have a total practical immersion in the center of your choice"

03 Objectives

TECH and its team of experts have developed this theoretical and practical degree for two main reasons: so that the specialist can get up-to-date and expand their knowledge in the approach and management of clinical cases in which the use of Integrative Medicine is recommended, and so that, subsequently, they can put into practice what they have developed during the theoretical phase, perfecting their professional skills and abilities. In this way, it guarantees a complete and immersive academic experience, which will positively influence their specialized development.





“

After completing this program you will master the most innovative strategies of Genomic Medicine in clinical practice, detailed pattern recognition and assessment of metabolic networks”



General Objective

- This Hybrid Professional Master's Degree in Integrative Medicine and Health has been designed so that the specialist is able, through real intervention, to acquire the most up-to-date knowledge to improve their skills in assessing the suitability of each discipline in the clinical environment, which will allow them to provide an even higher quality service based on the latest scientific evidence. In addition, they will be able to keep up-to-date on everything related to Integrative Medicine, promoting work strategies based on a comprehensive approach and multimodal rehabilitation as a reference model in the achievement of excellence in care



Whatever your objectives are, thanks to this very complete Hybrid Professional Master's Degree you will achieve them in less time than you expect"





Specific Objectives

Module 1. Introduction to Integrative Medicine

- ♦ Identify cultural, socioeconomic, and historical factors that shape population health disparities
- ♦ Demonstrate social and cultural competence in the context of a comprehensive care plan
- ♦ Reflect the reduction in economic expenditure and improvement in quality of life related to the introduction of IM

Module 2. Integrative Medicine and Health Prevention

- ♦ Study how the political, economic, and social macrosystem shapes the health system, determines access to resources, and influences the role of health professionals and the patient
- ♦ Examine ways in which integrative practitioners can participate in community-based health programs, identify barriers to access, and develop health resource for underserved populations
- ♦ Address the need to bring Integrative Medicine into the Public Health System

Module 3. Approaches and Strategies

- ♦ Define the clinical practice model, contextualized to the individual's health situation and appropriate goal setting
- ♦ Know the different philosophical systems of Integrative Medicine from an anthropological perspective

Module 4. Pathophysiology

- ♦ Recognize the pathophysiological processes that are common to all chronic diseases



Module 5. Diagnosis, Clinical and Complementary Analyses

- ♦ Know the diagnostic tools useful in these processes
- ♦ Explain basic aspects related to the module
- ♦ Analyze the efficacy of Genomic Medicine in clinical practice, pattern recognition, and evaluation of metabolic networks
- ♦ Describe the importance of isolating patterns of meaning within complex signals and the complexity of analyzing large datasets

Module 6. Environmental Medicine

- ♦ Review access to complementary medicine therapies in hospital settings
- ♦ Understand what can be disclosed, to whom, for what reason and what is needed for disclosure

Module 7. Approach to Frequent Chronic Diseases in Integrative Medicine I

- ♦ Identify community resources and referral network for patients requiring specialized care
- ♦ Safe disposal of toxic waste and preventing re-accumulation
- ♦ Analyze the relationship between the peripheral and central nervous system with the digestive tract and the immune system

Module 8. Approach to Frequent Chronic Diseases in Integrative Medicine II

- ♦ Interpret literature related to the module
- ♦ Develop customized, clinically meaningful omics-based solutions, with a focus on lifestyle and wellness-centered solutions



Module 9. Ethical and Legal Aspects

- ◆ Discuss the right of the individual as a patient to free access to Integrative Medicine
- ◆ Review the legal context of the application of Integrative Medicine, how to assess risk and mitigate cases of malpractice
- ◆ Understand common ethical issues that arise in current clinical practice
- ◆ Reflect on the need for academic and professional organization according to the regulatory framework of some European countries

“

Enroll now and advance in your field of work with a comprehensive program that will allow you to put into practice everything you have learned”

04 Skills

For any medical specialist, managing their patients properly and based on the latest scientific evidence is paramount. TECH is aware that any graduate who accesses this degree will have these skills, so this 100% online program will influence their improvement. Through the exhaustive analysis of real clinical cases and the best theoretical syllabus, in a few months you will have the most up-to-date knowledge on clinical management and approach to integrative patients.





“

You will be able to improve your skills in defining the therapeutic approach needed by the patient based on the specifics of their disease and the requirements of the techniques to be used”



General Skills

- ♦ Possess and understand knowledge that provides a basis or opportunity to be original in the development and/or application of ideas, often in a research context
- ♦ Apply acquired knowledge and problem-solving skills in new or unfamiliar environments within broader (or multidisciplinary) contexts related to their field of study
- ♦ Be able to integrate knowledge and face the complexity of making judgments based on incomplete or limited information, including reflections on the social and ethical responsibilities linked to the application of their knowledge and judgments
- ♦ Communicate their conclusions and the ultimate knowledge and rationale behind them to specialized and non-specialized audiences in a clear and unambiguous manner
- ♦ Acquire the learning skills that will enable them to continue studying in a manner that will be largely self-directed or autonomous





Specific Skills

- Formulate strategies and individualized health plans
- Define the different interdisciplinary referral models and teams within and outside the public health system
- Gather a complete medical history from a holistic approach
- Indicate efficient strategies for health prevention, promotion, and research
- Organize a network coordination system to facilitate therapeutic management of the patient
- Define the treatment approach required by the patient according to the different techniques used
- Describe the multiple disciplines that make up Integrative Medicine and Health and know how to prescribe each of these disciplines
- Apply diagnostic techniques based on clinical semiology
- Analyze, from the biological model, the different mechanisms underlying the individual's pathology and determine the pathophysiological process
- Detoxification strategies for different pathways
- Determine kinetic chain affectation and the different psycho-behavioral implications
- Define the constitutional model and patient diathesis
- Define the metabolic pathways involved in the patient's pathology in order to know when, how and which supplementation can reverse the dysfunctions
- Describe the role of different neurotransmitters and the impact on the gut-brain axis, as well as their involvement in the symptoms
- Point out the differences in autoimmune dysfunctions
- Point out the implications of glandular alterations on global health
- Describe the symptomatology associated with microbiota La dysfunction and establish an initial diagnostic approach
- Explain the different diagnostic techniques in Integrative Medicine and Health
- Determine the type of analysis and complementary tests for the correct diagnosis of the case



This qualification is essential for you to develop practical skills in the field of Integrative Medicine, with the help of the most distinguished experts in this healthcare sector"

05

Course Management

For the selection of the teaching staff of this hybrid learning program, TECH has selected a group of specialists from different fields of medicine, but with extensive experience in the use of strategies and techniques of Integrative Health. This is a team that combines teaching with professional practice, so that they can implement a more realistic, critical and up-to-date vision to the content, making this program a unique opportunity to expand and update their knowledge with the help of experts in the sector.





“

You will have access to individualized tutorials to resolve any questions that may arise during the course of your degree”

International Guest Director

Dr. Chiti Parikh is a leading medical figure with an impressive career in Integrative Medicine. She began her clinical career at New York Presbyterian Hospital, where she soon promoted to the position of executive director of the Integrative Health and Wellness program. In this role, Dr. Parikh oversees a team of more than 30 clinical and non-clinical staff members, providing a comprehensive set of services including nutrition, acupuncture, massage, health coaching, psychotherapy, pilates, meditation and yoga. She developed and launched a clinical fellowship in integrative medicine for physicians trained in family medicine and internal medicine, and incorporated integrative medicine education into the syllabus at Weill Cornell Medicine, in addition to establishing important collaborations with the department of oncology, pain management and palliative care to provide a holistic and compassionate treatment experience.

Dr. Parikh has also played a leading role in promoting awareness of integrative medicine, collaborating with professional societies and making regular contributions to media outlets such as the Dr. Oz Show, NBC News and VICE News. She has demonstrated a strong commitment to teaching and mentoring, offering learning and mentorship opportunities to medical students, residents, fellows and physicians interested in learning more about integrative medicine.

It is also important to highlight Dr. Parikh's international contribution in the field of human rights. As a volunteer medical evaluator for Physicians for Human Rights, she has conducted forensic medical assessments for torture victims seeking asylum around the world. In addition, she has been a volunteer and consultant at the Weill Cornell Center for Human Rights, where she has guided students in conducting medical assessments and educated them about human rights violations. These important contributions have elevated the relevance of her work in the international arena and reinforce her commitment to justice and human welfare.



Dr. Chiti, Parikh

- Executive Director, Integrative Health and Wellness at New York Presbyterian Hospital
- Director of Hospital Medicine at New York Presbyterian Lower Manhattan
- Executive Director at Weill Cornell Medicine
- Doctor of Medicine from Rutgers Robert Wood Johnson Medical School

“

Thanks to TECH you will be able to learn with the best professionals in the world”

Management



Dr. Menassa, Alejandra

- ♦ Head of the Internal Medicine Area and Mental Health Unit at the Integrative Medicine Clinic
- ♦ Head of the Ozone Therapy Area at the Integrative Medicine Clinic
- ♦ Assistant Physician of Internal Medicine at the Emergency Department of the 12 de Octubre University Hospital
- ♦ Member of the Psychoanalytic Medical Team of the Grupo Cero Film Production Company
- ♦ Master's Degree in Assessment of Bodily and Psychosocial Damage from the European Institute of Health and Social Welfare
- ♦ Expert in Judicial Psychological Expertise by the Instituto Superior de Psicología Alborán
- ♦ Expert in Ozone Therapy in Internal Medicine, University of Havana
- ♦ Vice-President of the Spanish Society of Integrative Health and Medicine (SESMI)
- ♦ Member of the Spanish Society of Internal Medicine (SEMI)



Dr. Rodríguez Picazo, Pedro

- ♦ Attending Director of the UME Clinic
- ♦ Founding Director of Medintegra
- ♦ Health Coordinator at Colisée
- ♦ Doctorate in Health Sciences from the University of Alicante
- ♦ Diploma in Nursing, Community Health from the University of Alicante
- ♦ University Specialist in Osteopathy, Kinesiology and Acupuncture from the University of Murcia
- ♦ Master's Degree in Advanced Integrative Health and Medicine from TECH Technological University
- ♦ ARPN, Health Services by the European University Miguel de Cervantes
- ♦ Member of the Editorial Board of the Integrative Medicine Magazine RS&MI, Board of Directors of the Spanish Society of Integrative Health and Medicine, Member of the European Society of Integrative Medicine, Member of the Society of Integrative Oncology

Professors

Dr. Vargas Sánchez, María José

- ♦ Anesthesiology and Resuscitation Specialist at Synergia MedicalCare
- ♦ Medical Specialist in Anesthesiology at Blue Healthcare
- ♦ Health Coach Specializing in Emotional Management and Wellness at the Willow Foundation
- ♦ Heart Coherence Coach at Heartmath Institute
- ♦ Master's Degree in Research and Specialized Pain Treatment from the University of Valencia
- ♦ Master's Degree in Emergency Medicine at San Carlos Clinical Hospital
- ♦ Vice-president of the Spanish Federation of Reiki
- ♦ Member of the Spanish Society of Integrative Health and Medicine (SESMI)

Ms. Trujillo, Helena

- ♦ Psychologist Specializing in Psychoanalysis Techniques
- ♦ Psychoanalyst in private practice
- ♦ Director of television and presenter of scientific and cultural programs for Grupo Cero TV
- ♦ Member of the Clinical Care Department of Grupo Cero
- ♦ Degree in Psychology from the University of Malaga
- ♦ Expert in Criminology by the Andalusian Interuniversity Institute of Criminology. Malaga

Dr. Alonso Almela, Marta

- ♦ Nutritionist in an Integrative Medicine Clinic
- ♦ Nutritionist in private professional practice A Happy Body
- ♦ Master's Degree in Food Safety Complutense University of Madrid
- ♦ Degree in Food Science and Technology, Autonomous University of Madrid
- ♦ Diploma in Human Nutrition and Dietetics at the University of Almeria and Institute of Active Cellular Nutrition
- ♦ Member of the Spanish Association of Dietitians and Nutritionists

Dr. García Pérez-Juana, Daniel

- ♦ Physiotherapist and Nurse
- ♦ Physiotherapist in private practice Daniel Garcia Perez-Juana
- ♦ Assistance Director at Clínica IMEDE
- ♦ Head of the Department of Physiotherapy and Osteopathy at the Integrative Medicine Clinic
- ♦ Doctorate in Health Sciences, Pain and Proprioception from Rey Juan Carlos University
- ♦ Master's Degree in Motor Neurocontrol and Physiotherapy from the Rey Juan Carlos University
- ♦ President and Founder of the Spanish Tao Yin Association

Ms. Faulin, Ayla

- ♦ Head of the Department of Clinical Nursing Integrative Medicine
- ♦ Master's Degree in Evidence-Based Integrative Nutritional Supplementation from the School of Integrative Health
- ♦ Bachelor's Degree in Natural Therapies with Specialty in Naturopathy at Real Centro Universitario Escorial-María Cristina
- ♦ Expert in Nutrition Applied to the Clinic by the School of Integrative Health

Dr. Yanguas Pol, José

- ♦ Homeopath and Entrepreneur of Orthopedic Materials
- ♦ Superior Technician in Orthoprosthesis in the private center of primary and high school education CEBAT Muchamiel, Alicante
- ♦ Diploma of Homeopathy CEDH at the Illustrious Official College of Physicians
- ♦ Degree in Pharmacy from the University of Granada

Dr. Hortal, Luis

- ♦ Family Physician
- ♦ Professor of Health Information Systems and Ultrasound in SERMAS
- ♦ Advanced Diploma in Homeopathy
- ♦ Internship teacher for 5th and 6th year students at the University of Alcalá
- ♦ Family and Community Medicine Resident Tutor DAEste SERMAS

Dr. Lajo Morales, Teresa

- ♦ Endocrinologist at Synergia MedicalCar
- ♦ Endocrinologist at Nuosalud Clinic
- ♦ Head of the Endocrinology Service at the HLA Moncloa University Hospital
- ♦ Medical Specialist in Endocrinology and Nutrition at La Paz University Hospital
- ♦ Postgraduate Diploma in Bioregulatory Medicine from the University of Alcalá

Dr. Salgado, Carmen

- ♦ Naturopath, Director and Founder of the Herbarum Natura therapeutic center
- ♦ Member of the Naturopathy Department of the Center for Advanced Studies Philippus Thuban
- ♦ Degree in Pharmacy from the Complutense University of Madrid
- ♦ Degree in Biochemistry and Molecular Biology
- ♦ Postgraduate Diploma in Naturopathy by the Escorial-María Cristina Royal University Center
- ♦ Expert in Nutrition and Orthomolecular Medicine by the French Orthomolecular Medicine Association

Dr. Naranjo, Tomás Álvaro

- ♦ Director of the Center of Integrative Medicine Arjuna Tortosa
- ♦ Collaborating Researcher at the Hospital de Tortosa Verge de la Cinta
- ♦ Independent researcher in Bioenergetic, Vibrational and Syntergetic Medicine
- ♦ Medical Specialist in the Anatomical Pathology Service of the HTC Health Care Center
- ♦ Doctor in Pathological Anatomy
- ♦ Degree in Clinical Psychology
- ♦ Member of the International Association of Syntergetics

Dr. González Martín, María del Carmen

- ♦ Medical Director of the Clínica Centro
- ♦ Specialist in Orthomolecular and Anti-Aging Medicine at Clínica Centro
- ♦ Doctorate in Infectious Diseases and Microbiology from the University of Granada
- ♦ Master's Degree in Active Cellular Nutrition by the French Association of Orthomolecular Medicine
- ♦ Vice President of the Granada Association of Aesthetic Medicine
- ♦ Member of the Spanish Society of Nutrition and Orthomolecular Medicine, International Committee of Experts in Ozone Therapy

D. Moltó, Juan Pablo

- ♦ Managing Director of the International Institute of Scientific Acupuncture and Psychoneuroacupuncture
- ♦ Principal Researcher of the International Institute of Scientific Acupuncture and Health Sciences
- ♦ Founding Member of the General Council of the College of Naturopathic Doctors of Spain
- ♦ Diploma in Traditional Chinese Medicine
- ♦ Diploma in Naturopathy
- ♦ Diploma in Homeopathy from the Escorial-Maria Cristina Royal University Center

Dr. Esmel, Neus

- ♦ Director of Esmel Therapies Center
- ♦ Nurse at the Vall d'Hebron Barcelona Hospital Campus
- ♦ Nurse at the University Hospital of Bellvitge
- ♦ Oncology Nurse at the Hospital Duran i Reynals
- ♦ Nurse at Germans Trias i Pujol University Hospital
- ♦ Nurse at the Hospital Lluís Alcanyís
- ♦ Doctor in Nursing Sciences, Rovira i Virgili University
- ♦ Member of Spanish Society of Internal Medicine

Dr. Díaz Díez, Camino

- ♦ Director of Private Practice Dr. Camino Díaz
- ♦ Blue Healthcare Medical Coordinator
- ♦ Physician of the Health Department of Reebok Sports Club
- ♦ Head of the Homeopathy Department of the Integrative Medicine Clinic
- ♦ Collaborator of the Oncology Unit at La Moraleja University Hospital
- ♦ Medical Specialist at the Homeopathic Institute and San José University Hospital
- ♦ Member of the Spanish Society of General Medicine, Spanish Society of Health and Integrative Medicine and Integrative Medicine
- ♦ Master's Degree in Supplementation and Nutrition from CEU Cardenal Herrera University

Dr. Rigau, Josepa

- ♦ Immunologist and Specialist in Virtual Clinic MASalud
- ♦ Microimmunotherapist in Virtual Clinic MASalud
- ♦ Medical Specialist in Biological and Genetic Medicine in different institutions
- ♦ Doctor in Medicine and Surgery from Rovira i Virgili University
- ♦ Master's Degree in Biological Medicine and Anti-aging from the University of Alcalá
- ♦ Master's Degree in Pharmacogenetics, Pharmacogenomics and Personalized Medicine from the University of Barcelona
- ♦ Master's Degree in Environmental Medicine from the American Academy of Environmental Medicine
- ♦ President and Founder of the Spanish Association of Microimmunotherapy (AEMI)
- ♦ Member of the European Laser Association, Spanish Society of Surgical Medical Laser (SELMQ), Spanish Society of Anti-Aging and Longevity Medicine (SEMAL), Spanish Society of Integrative Health and Medicine (SESMI)

Dr. De la Puerta, Lola

- ♦ Director and Physician of a private practice of Integrative and Antiaging Medicine
- ♦ Medical Consultant at Cobas Laboratory
- ♦ Specialist of the Medical Committee at the Institute of Microecology
- ♦ Master's Degree in Biological Medicine and Anti-Aging by the University of Alcalá
- ♦ Scientific Member of the Spanish Society of Probiotics and Prebiotics
- ♦ Member of the Spanish Society of Anti-Aging and Longevity Medicine, Spanish Society of Integrative Medicine, Spanish Society of Biological and Anti-Aging Medicine, Spanish Society of Cosmetic Medicine and Surgery, Association of Microbiological Therapy

D. Serrano Gandía, Juan

- ♦ Executive Technical Project Manager at the company Dietéticos Intersa
- ♦ Analyst Biologist at the Valencian Institute of Oncology Foundation
- ♦ Degree in Biological Sciences, Specialized in Biochemistry and Molecular Biology from the University of Valencia
- ♦ Member of the Vice President of the Spanish Society of Integrative Health and Medicine, Spanish Society of Phytotherapy

Dr. Verdaguer, Xevi

- ♦ Director of the Xevi Verdaguer Institute of Psychoneuroimmunology
- ♦ Specialist in Psychoneuroimmunology, Acupuncture and Hypnosis by various training centers
- ♦ Graduate in Physiotherapy from the Catholic University San Antonio of Murcia (UCAM)
- ♦ Degree in Human Nutrition and Dietetics at the University Isabel I
- ♦ Diploma in Physiotherapy from Gimbernat University School

Dr. Benito de la Torre, Susana

- ♦ Doctor specializing in Rehabilitation and Physical Medicine
- ♦ Rehabilitation Physician at the Locomotor Department of the Infanta Leonor Hospital
- ♦ Rehabilitation physician at the Carlos III Hospital
- ♦ Instructor of online coaching courses

Ms. Alonso Moreno, Mar

- ♦ Therapist expert in naturopathic biological methods
- ♦ Satva Integrative Health Therapist
- ♦ Advisor and coordinator of Synergia Medical Care
- ♦ Speaker at Integrative Medicine Conferences
- ♦ Teacher in Integrative Health programs
- ♦ Specialist in Quantum Biophysics
- ♦ Specialist in Environmental Medicine by the AAMA

Dr. Gelfo, Judith

- ♦ Dentist and Kinesiologist
- ♦ Director of the Holistic Dentistry Center
- ♦ Homeopathic Dentist at Virtual Clinic MASalud
- ♦ Degree in Dentistry from the National University of Córdoba. Argentina
- ♦ Graduated in Occlusion and Posture Improvement in Kinesiological Key by the University of Palermo. Italy
- ♦ Vice-president and founder of the Spanish Society of Medical Dental Kinesiology
- ♦ Member of the Dentoshopia-GEODA Foundation

Ms. Barrena Uriarte, María José

- ♦ Biochemist specializing in the healthcare field
- ♦ Founder and Director of Intermedical Solutions
- ♦ Quality Manager at Policlínica Guipúzcoa
- ♦ Hospital Quality Management Consultant at GF Consulting
- ♦ Clinical Immunologist in Policlínica Guipuzcoa
- ♦ Responsible and collaborator in research projects
- ♦ Degree in Biology from the Complutense University of Madrid

Ms. García Alonso, Marisa

- ♦ Pharmacist Expert in Clinical Analyses and Natural Treatments
- ♦ Director of the Clinical Analysis Laboratory at the Santa Elena Clinic
- ♦ General Manager of Analytical Studies Applied to the S.L. Clinic
- ♦ Manager of Laboratorios Reunidos SL
- ♦ Head Pharmacist at Estación de Atocha Pharmacy
- ♦ Graduate in Pharmacy from the Complutense University of Madrid
- ♦ Master's Degree in Drug Addiction
- ♦ Specialist in Clinical Analysis from the Complutense University of Madrid

Mr. Maudos Martín, Carlos

- ♦ Expert Therapist in Chinese Medicine
- ♦ Therapist in Acupuncture Carlos Maudos Martín
- ♦ Diploma in MORA Bioresonance
- ♦ Course of Kinesiology

Mr. Guirado Aguirre, Fernando

- ♦ Biometrist and Hematographic Researcher
- ♦ Hematographic Researcher
- ♦ Therapist in private consultations
- ♦ President of the Holistic Hematographic Institute
- ♦ Medical Technical Assistant in Nursing
- ♦ Master's Degree in Quantum Scio
- ♦ Diploma in Naturopathy

Dr. Navarro, Carmen

- ♦ Medical Director, GAIA clinic
- ♦ Specialized Consultation in Environmental Medicine SQM, CFS, Fibromyalgia and Chronic Infectious
- ♦ Bacterial and Viral Chronic Infectious Diseases
- ♦ Degree in Medicine and Surgery from the University of Granada
- ♦ Expert in Micronutrition and Diet Therapy from the University of Almeria
- ♦ Master's Degree in Integrative and Humanist Medicine

Dr. Mendes Moreira, Ana Cristina

- ♦ General and Clinical Director of the Center for Integrative Medicine Dr. Ana Moreira
- ♦ President of the Spanish Society of Integrative Medicine
- ♦ Vice-president of the Portuguese Society of Ozone Therapy
- ♦ Master's Degree in Biological Medicine and Anti-Aging by the University of Alcalá
- ♦ Member of the Executive Committee of the European Society of Integrative Medicine

Dr. Muñoz Calero, Pilar

- ♦ President and Director of the Alborada Foundation for Environmental Medicine
- ♦ Collaborator of the Breakspear Medical Group. United Kingdom
- ♦ Co-Director of the Extraordinary Chair of Pathology and Environment at the Complutense University of Madrid
- ♦ Numerary member of the Illustrious Ramón y Cajal Academy of Health Sciences
- ♦ Member of the American Academy of Environmental Medicine, Spanish Society of Precision Health, International Society against Lyme Disease and other associated pathologies

Dr. Mejía Viana, Sergio

- ♦ Cardiologist Specializing in Integrative Therapies
- ♦ Coordinator of the COVID-19 ward at the Viamed Virgen de la Paloma Hospital
- ♦ Interventional Cardiologist in Cardio Care at the High Care Hospital in Marbella and at the CHIP Hospital in Malaga
- ♦ Consultant in Cardiology at Saint Bernard's Hospital
- ♦ Director of the Hemodynamics Laboratory at the Heart Institute of the Vithas Xanit International Hospital
- ♦ Member of the European Society of Cardiology, Spanish Society of Cardiology, Spanish Society of Integrative Health and Medicine, Spanish Federation of Integrative Medicine, Spanish Association of Ozone Therapy Professionals

Dr. González Lozón, Belén

- ♦ Specialist in Family and Community Medicine Expert in Psychoneuroimmunology
- ♦ Expert in Nutrition and Integrative Medicine at the San Fernando Medical Center
- ♦ Expert Physician in Nutrition and Integrative Medicine at Clínica Varoa
- ♦ Clinical Manager in Private Practice of Psychoneuroimmunology
- ♦ Teacher in postgraduate studies in Integrative Medicine
- ♦ Master's Degree in Clinical Psychoneuroimmunology by the Pontifical University of Salamanca

Ms. González Íñiguez, Mónica

- ◆ Nurse Expert in Natural Therapies
- ◆ Nurse at the General University Hospital of Elche
- ◆ Acupuncturist in the Vita Nova Clinic
- ◆ President of the Association of Natural and Energetic Therapies
- ◆ Diploma in Nursing from the University of Alicante

Dr. Cruz Tabuenca, Héctor

- ◆ Physician specializing in Neurology
- ◆ Neurologist at the Terrassa Health Consortium
- ◆ Neurologist at the Clinical University Hospital of Zaragoza
- ◆ Neurologist at the Vic Hospital Consortium
- ◆ Homeopath at the Marenostum Family Health Center
- ◆ Author of several scientific articles
- ◆ Speaker at congresses related to Homeopathy
- ◆ Master's Degree from the Medical and Homeopathic Academy of Barcelona (AMHB)

Dr. Romero, Carolina

- ◆ Director of the Mind-Body Therapy Center of the Canary Islands
- ◆ Head of the Mind Body Department in the Integrative Health Program at San Roque University Hospitals
- ◆ Co-author of a book on Integrative Oncology
- ◆ Art therapist, teacher of Samatha and Vipassana, and therapeutic Yoga
- ◆ Trained in Tibetan Yoga, Dream Yoga and the Bardo
- ◆ Doctorate in Clinical Psychology
- ◆ Postgraduate degree in Neuropsychology and Education
- ◆ Postgraduate degree in Family Intervention and Mediation
- ◆ Member of the Spanish Society of Integrative Health and Medicine (SESMI)

Dr. Ibáñez Ruiz, Esther

- ◆ Specialist in General and Digestive Surgery Expert in Integrative Oncology
- ◆ Physician at the Integrative Medicine Clinic Dr. Esther Ibáñez
- ◆ Family Physician and Pediatrician in various hospital centers
- ◆ President of the Spanish Society of Integrative Physicians
- ◆ Teacher in postgraduate studies in Integrative Medicine
- ◆ Master's Degree in Chinese Medicine and Acupuncture

Ms. Masllorens, Laia

- ◆ Expert Nurse in Integrative Health
- ◆ Co-founder and Deputy Director of the Institute of Integrative and Conscious Health
- ◆ Integrative Nurse at the Omega Zeta Clinic
- ◆ Integrative Nurse at Osteo9
- ◆ Degree in Nursing from the University of Barcelona
- ◆ Master's Degree in Naturopathic Medicine and Nursing from the University of Barcelona
- ◆ Postgraduate in Surgical Nursing from the Autonomous University of Barcelona

Dr. Portales, Sergio

- ◆ Integrative Physician in Private Consultation
- ◆ Former president of the Matritense Hahnemannian Society
- ◆ Degree in Medicine and Surgery from the National University of Mexico and the University of Alcalá
- ◆ Specialist in Intensive Care Medicine
- ◆ Diploma in Acupuncture
- ◆ Former Professor of Medical Physiology
- ◆ Diploma in Gestalt Psychotherapy

Dr. Aldana Martínez, Natalia Sofia

- ♦ Medical Specialist in Alternative Medicine and Integrative Medicine
- ♦ Consultant in the Ministry of Health and Social Protection of Colombia
- ♦ Coordinator of the Academy of Integrative Health & Medicine
- ♦ Medical Specialist in Alternative, Complementary and Integrative Medicine in Kailash Medicine
- ♦ Medical Specialist in Alternative Medicine at Hospital Medicina de Oriente
- ♦ Medical Specialist in Alternative Medicine at the Hospital Tunjuelito
- ♦ Medical Specialist at Hospital ESE Hospital Nazareth
- ♦ General Editor of the Virtual Health Library on Traditional, Complementary and Integrative Medicine of the Americas
- ♦ Degree in Medicine and Surgery from the Industrial University of Santander
- ♦ Specialist in Alternative Therapies (Acupuncture and Oriental Medicine) from Manuela Beltran University
- ♦ Master's Degree in Alternative Medicine Homeopathy at the National University of Colombia
- ♦ Member of the MTCl Americas Network

Dr. Díaz Sáez, Gualberto

- ♦ Specialist in Family and Community Medicine
- ♦ Homeopathic Physician and Integrative Oncologist at Centro Médico Conde Orgaz y Pinar
- ♦ Researcher at Servier Laboratories and at the Medical Department of Boiron Laboratories
- ♦ Teacher in courses and seminars related to Homeopathy
- ♦ Regular speaker at Homeopathy and Integrative Medicine Congresses
- ♦ Editorial advisor and technical advisor in the scientific publishing house Amazing Books
- ♦ Member of the Board of Directors and the Scientific Committee of the Spanish Society of Homeopathic Physicians
- ♦ Doctor in Biotechnology, Medicine and Biosanitary Sciences from the Francisco de Vitoria University

Dr. Hernández Niño, Leonardo

- ♦ Medical Surgeon Expert in Alternative Therapies
- ♦ Physician at the San Luis Medical-Surgical Unit
- ♦ Physician at Heraz Holistic Medicine
- ♦ Physician in private consultation
- ♦ Director of the Research Department of Magnofarma Lab
- ♦ Teacher in university programs related to Alternative Medicine
- ♦ Diploma in Homotoxicology and Biological Medicine from El Bosque University
- ♦ Diploma in Acupuncture and Moxibustion from El Bosque University

Ms. Blázquez, Elisa

- ♦ Clinical nutritionist and speaker
- ♦ Responsible for the Department of Nutrition and Dietetics of the IQtra Advanced Medicine Clinic
- ♦ Regular contributor to newspapers and magazines
- ♦ Nutritional disseminator through YouTube
- ♦ Author of the book Integrative Diet, "The diet your health needs"
- ♦ Graduate in Human Nutrition and Dietetics from the Complutense University of Madrid
- ♦ Specialized in Immunonutrition

Dr. Fernández Barrera, Valle

- ♦ Doctor Expert in Integrative Medicine
- ♦ Integrative Physician at the Valle Fernández Clinic
- ♦ Family Doctor at Health and Emergency Centers
- ♦ Director of Los Almendrales Medical Center
- ♦ Master's Degree in Integrative and Humanistic Medicine by the Lineo Institute ASEPROIM
- ♦ Expert in Immunonutrition by the Catholic University of Valencia

Dr. García Gutiérrez, Rosario

- ♦ Specialist in Family and Community Medicine Expert in Antiaging and Aesthetic Medicine
- ♦ Director of the Vitaelia Clinic
- ♦ Medical Director of the Ozone and Biological Serotherapy Unit at SHA Wellness Clinic
- ♦ Physician in private consultations
- ♦ Master's Degree in Biological Medicine and Anti-Aging from the CEU Cardenal Herrera University
- ♦ Master's Degree in Advanced Techniques in Aesthetic Medicine by CEU Cardenal Herrera University

Mr. Díaz Sáez, Arístides

- ♦ Complementary therapist expert in Family Constellations

Ms. Daza, Beatriz

- ♦ Nurse Practitioner in Traditional Chinese Medicine
- ♦ Acupuncturist in Traditional Chinese Medicine in the Medizen Clinic
- ♦ Freelance Nurse for home care
- ♦ Nurse Practitioner at Sanitas Sociedad Anónima de Hospitales
- ♦ Nurse at the Integrative Medicine Clinic
- ♦ Master's Degree in Palliative Care by the University Camilo José Cela
- ♦ Advanced Technician in Traditional Chinese Medicine by the European Foundation of Traditional Chinese Medicine
- ♦ Organizational Secretary of the Spanish Society of Integrative Health and Medicine
- ♦ Member of the Association of Health Acupuncturists

Mr. Bogeat, Julio

- ♦ Clinical Psychologist specialized in Ericksonian Hypnosis
- ♦ Psychotherapist in private consultation
- ♦ Consultant for different public and private entities, especially in the health sector
- ♦ Expert collaborator of the National Federation of Associations for the Fight Against Kidney Diseases
- ♦ Collaborator on the Foundation for the Development of Consciousness
- ♦ Degree in Clinical Psychology from the CEU San Pablo University

Dr. García, Isabel

- ♦ Endocrinologist and Integrative Nutritionist
- ♦ Integrative and Conscious Health Institute Specialist
- ♦ Integrative Physician at Osteo9
- ♦ Nutritional Coaching at Omega Zeta Clinic
- ♦ Endocrinology Assistant Physician at Centre Mèdic Castelldefels
- ♦ Attending Physician of Endocrinology at the Catalan Institute of Endocrinology
- ♦ Master's Degree in Naturopathy and ISMET

Dr. Pellicer Sabadí, Cristina

- ♦ Specialist in Integrative Medicine
- ♦ Teacher in different Integrative Medicine courses
- ♦ Medical trainer in Thoracic Surgery
- ♦ Degree in Medicine and Surgery, Autonomous University of Barcelona
- ♦ Master's Degree in Clinical Oncology from the University of the Basque Country/Euskal Herriko Unibertsitatea (UPV/EHU)
- ♦ Master's Degree in Clinical Psychoneuroimmunology from the University of Salamanca
- ♦ Trained in multiple health and complementary disciplines

Dr. Giralt, Isabel

- ♦ President of the Spanish Society of Integrative Health and Medicine
- ♦ Director of the Acupuncture Unit, Clínica Universitaria Dexeus
- ♦ Founder of ENERGIMED SL Acupuncture and Natural Medicine Clinic
- ♦ Editor of the International Journal of Acupuncture
- ♦ Master's Degree in Acupuncture from the University of Lleida
- ♦ President of the section of acupuncture doctors of the Official College of Doctors of Barcelona
- ♦ Member of the International Council of Medical Acupuncture, European Society of Integrative Medicine

Dr. Mestres Sales, Josep María

- ♦ Angiologist and Vascular Surgeon at the Sagrada Familia Clinic
- ♦ Attending Physician at the Hospital de la Santa Creu i Sant Pau
- ♦ Consultant II of the Angiology and Vascular Surgery Service at Santa Creu i Sant Pau Hospital
- ♦ Founder and Secretary of the Catalan Foundation for the Study of Vascular Disorders
- ♦ Member of the Catalan Society of Angiology and Vascular Surgery, Spanish Society of Angiology and Vascular Surgery, Spanish Society of Radiology, International Society for Endovascular Surgery, European Venous Forum

Ms. García Sabaté, Carolina

- ♦ Biochemist Expert in Microbiome
- ♦ Head of the Advanced Techniques in Molecular Biology Laboratory at the Teletest Laboratory
- ♦ Speaker at the International Congress of the Spanish Society of Nutrition and Orthomolecular Medicine
- ♦ Degree in Biochemistry from the University of Barcelona
- ♦ Master's Degree in Pharmacological Sciences, University of Barcelona
- ♦ Expert in Dietetics and Nutrition from the Catholic University San Antonio of Murcia

Dr. Sabater Tobella, Juan

- ♦ Researcher Specialist in Genomic Medicine and Metabolopathies
- ♦ Honorary President of the Royal Academy of Pharmacy of Catalonia
- ♦ President of EUGENOMIC
- ♦ Director of the first center in Spain that focuses on researching and diagnosing metabolic diseases: Institute of Clinical Biochemistry
- ♦ Implementation of the first provincial program for the early detection of Phenylketonuria and other metabolopathies
- ♦ Biochemistry Professor at the Faculty of Medicine of the Autonomous University of Barcelona
- ♦ Doctor of Pharmacy from the University of Barcelona
- ♦ Degree in Pharmacy from the University of Barcelona
- ♦ Member of the Royal Academy of Medicine of Catalonia, Royal Spanish National Academy of Medicine, Royal Academy of Pharmacy of Catalonia

Mr. Almodóvar Navalón, Francisco

- ♦ Lawyer specialized in Health Law
- ♦ Co-founder of Bufete Almodóvar & Jara
- ♦ Coordinator of the Legal Teams of Bufete Almodóvar & Jara
- ♦ Responsible for Management and Development of Bufete RAM
- ♦ Author of the book "Therapeutic Personal Data"
- ♦ Co-author of several monographs and articles on legal issues related to health rights
- ♦ Regular speaker at conferences, courses and congresses related to Law
- ♦ Pharmaceutical and Health
- ♦ Collaborator of the European Pharmaceutical Law Group
- ♦ Degree in Law from the Complutense University of Madrid
- ♦ Master's Degree in New Technologies Law

Dr. Sánchez Suárez, Sergio Luis

- ◆ President of the Spanish Federation of Health Professionals for Integrative Medicine (FESMEDI)
- ◆ Medical Specialist in Integrative Medicine and Health in Canary Biomedical
- ◆ Doctor of Medicine from the University of Las Palmas de Gran Canaria
- ◆ Degree in Medicine from the University of La Laguna
- ◆ Master's Degree in Nutrition, University of Las Palmas of Gran Canaria
- ◆ Master's Degree in Neurosciences and Behavioral Biology, Pablo de Olavide University
- ◆ Diploma in Homeopathic Medicine from the Homeopathic Medical School of Argentina Tomás Pablo Paschero
- ◆ Diploma in Global Postural Re-Education (GPR) from the University of Manual Therapies of Saint-Mont. France
- ◆ Trained in Microimmunotherapy by the Institut 3IDI
- ◆ Diploma in Manual Lymphatic Drainage Vodder from the Association for the Promotion of Manual Lymph Drainage Vodder Spain

Dr. Crespo de la Rosa, Juan Carlos

- ◆ Expert Physician and Researcher in Integrative Medicine and Health
- ◆ General Practitioner in Private Consultations
- ◆ Author of 4 books and 150 scientific articles published in national and international journals
- ◆ Professor in postgraduate university studies
- ◆ President of the Spanish Society of Integrative Medicine
- ◆ Director of the Institute of Integrative Medical Revitalization
- ◆ Regular speaker at Integrative Medicine and Health Congresses
- ◆ Doctor in Medicine and Surgery by the University of Seville

Dr. Morales Martín, Carlos

- ◆ Private Consultant Physician associated with the Institute of Active Cellular Nutrition
- ◆ Medical Director of Ser Integral Integrative Health
- ◆ Attending Physician in FREMAP, Mutua UMIVALE and Cruz Blanca EPS
- ◆ Director of the Local Unit of Garagoa and Boyacá for the National Institute of Legal Medicine and Forensic Sciences. Colombia
- ◆ Master's Degree in Cellular Nutrition by San Pablo CEU University Foundation
- ◆ University Specialist in Nutrigenomics and Anti-Aging

Dr. Matute, Ruth

- ◆ Biochemist and Molecular Biologist Expert in Nutrigenomics
- ◆ Biochemist at ADNLife
- ◆ Speaker in several courses related to Nutritional Genomics
- ◆ Doctor in Biochemistry and Molecular Biology
- ◆ Degree in Biochemistry and Molecular Biology
- ◆ Expert in Genomics and Precision Medicine from the University of California
- ◆ Expert in Epigenetics and Control of Gene Expression, University of Melbourne
- ◆ Expert in Clinical Nutrition, University of California

D. Domínguez Iglesias, Jesús

- ◆ Expert Physiotherapist in Osteopathy and Naturopathy
- ◆ Director of Gheos Proyecto Natural SL
- ◆ Author of the book "My Fasting"
- ◆ Speaker at various medical congresses
- ◆ Master's Degree in Human Physiology by the University of Barcelona
- ◆ Expert in Hair Mineral Analysis

Dr. Vinyes Casajoana, David

- Medical Specialist in Neurology
- Medical Director at the Institute of Neural Therapy and Regulatory Medicine. Barcelona
- Teacher of Neural Therapy courses in Europe and America
- Speaker at various national and international congresses on Neural Therapy, Craniofacial and Oral Pain, and Gynecology
- Degree in Medicine and Surgery from the Autonomous University of Barcelona
- Master's Degree in Neurosciences from the Autonomous University of Barcelona
- Master's Degree in Anthropology of Medicine at the University of Tarragona
- Training in Neural Therapy at CIMA. Colombia
- Member of Honor of the Medical Societies of Neural Therapy of Austria, Italy, Portugal, Colombia and Ecuador, Ethical and Scientific Commission of the International Federation of Medical Associations of Neural Therapy

Dr. Martin, Santos

- Specialist in Oncology and Family Medicine
- Doctorate at the University of Tübingen (Germany)
- Degree in Medicine and Surgery at the University of Valencia
- Specialization studies in oncology in Switzerland and Germany
- Master's Degree in Homeopathy, Environmental Medicine, Natural Medicine and Ozone Therapy
- Professor in university masters at the Universities of Valencia, Barcelona, Granada and Madrid
- Speaker at national, European and world congresses
- Member of the European Society of Hyperthermia and of the German Oncological Society



Mr. Fernández Fortún, Tomás

- ♦ Naturopathic Nurse
- ♦ Nurse in hospitals and public primary care centers
- ♦ Director of the Department of Naturopathic Nursing at the Official College of Nursing. Zaragoza, Spain
- ♦ President of the Association of Naturopathic Nursing of Zaragoza (ASENZAR)
- ♦ Teacher in university studies of Nursing
- ♦ Degree in Nursing from the University of Zaragoza
- ♦ Postgraduate degree in Naturopathic Medicine and Surgery from the University of Zaragoza

“

The teachers of this educational program will share their professional experiences with you through a fully personalized guide"

06

Educational Plan

The structure and content of this Hybrid Professional Master's Degree have been designed taking into account the most current developments and specifications of Integrative Medicine. Therefore, thanks to the exhaustiveness with which the team of experts has developed its syllabus, the graduate will be able to catch up with the latest scientific evidence of the sector through the most avant-garde programming that includes not only high quality theoretical material, but also complementary material in different formats, aimed at making this degree a more dynamic and enriching academic experience for the specialist's professional career.





This Hybrid Professional Master's Degree has several didactic modules that you can access from any device connected to the Internet thanks to the multiple features of the interactive platform offered by TECH"

Module 1. Introduction to Integrative Medicine

- 1.1. History of Integrative Medicine
 - 1.1.1. History of Integrative Medicine
- 1.2. Foundations and Indications
 - 1.2.1. Foundations of Integrative Medicine
 - 1.2.2. Indications
- 1.3. How to Develop a Health Plan for the Patient?
 - 1.3.1. The Health Plan: How to Develop It?
- 1.4. The Sociology of Health
 - 1.4.1. Aspects of the Social Macrosystem that Affect Human Health
 - 1.4.2. Social Aspects that Impact Access to the System
 - 1.4.3. Limitations to Practicing Integrative Medicine
- 1.5. Medical History and Comprehensive Evaluation of the Person
 - 1.5.1. Medical History from the IM's Perspective
 - 1.5.2. Comprehensive Assessment: Objectives and Results
- 1.6. Integrative Approach from a Social Work Perspective
 - 1.6.1. Social Work and the IM
 - 1.6.2. Integrative Approach from a Foundation of Social Work
- 1.7. Biological and Psychological stages in Humans. Age-Related Developmental Aspects
 - 1.7.1. Biological and Psychological stages in Humans
 - 1.7.2. Age-Related Developmental Aspects

Module 2. Integrative Medicine and Health Prevention

- 2.1. Prevention, Health Education and Lifestyles
 - 2.1.1. Preventive Nutrition
- 2.2. Actividad física y deporte
- 2.3. The Patient as a Proactive Individual
 - 2.3.1. The Role of Nursing in Health and Integrative Medicine
- 2.4. Community Networks as a Pillar of Prevention and Health Promotion
 - 2.4.1. Community Pharmacies
 - 2.4.2. Health Centers
 - 2.4.3. The Family Network
 - 2.4.4. GAM





Module 3. Approaches and Strategies

- 3.1. Biological Model
 - 3.1.1. The Interrelation of Physiological Systems
 - 3.1.2. Mitochondrial Physiology and Dysfunction
 - 3.1.3. Chronic Inflammation and Mucosal Permeability Syndromes
 - 3.1.4. Implication of Immune System Disorders in Chronic Pathologies
 - 3.1.4.1. Autoimmunity
 - 3.1.5. The Role of Oxidative Stress
 - 3.1.6. Microbiota
 - 3.1.7. The Physiology of Detoxification
- 3.2. Systemic Approach
 - 3.2.1. Gestalt
 - 3.2.2. Transgenerational
- 3.3. Psychoanalytical Approach
- 3.4. Cosmogony of Oriental Medicine
 - 3.4.1. Anthropological and Philosophical Aspects
 - 3.4.1.1 Kinanthropometry and Relationship with Kinetic Chains
 - 3.4.2. Acupoints from Human Embryology
 - 3.4.3. Scientific Foundations of Contemporary Acupuncture
 - 3.4.4. Microsystems
 - 3.4.4.1. Foot Reflexology
 - 3.4.4.2. Auricular Reflex Zone Technique
 - 3.4.4.3. Other Disciplines (Yamamoto Cranial Acupuncture YNSA)
- 3.5. Constitutional Imago, Archetype and Diathesis

Module 4. Pathophysiology

- 4.1. Metabolic Networks
 - 4.1.1. Main Metabolic Pathways and their Clinical Implication
 - 4.1.1.1. Carbohydrate Metabolism
 - 4.1.1.2. Fat Metabolism
 - 4.1.1.3. Protein Metabolism
- 4.2. Inflammation
 - 4.2.1. Main Inflammatory Mediators and their Pathways
 - 4.2.2. Microbiota and Inflammation
 - 4.2.3. Inflammation in Chronic Pathologies
- 4.3. Immunity
- 4.4. Neuropsychiatry and Biological Decoding
 - 4.4.1. Main Neurotransmitters and their Functions
 - 4.4.2. Gut-Brain Axis
 - 4.4.3. Brain/Immune System Interactions
 - 4.4.4. Microbiota and Depression

Module 5. Diagnosis, Clinical and Complementary Analyses

- 5.1. Clinical Examination and Contact
 - 5.1.1. Medical History
 - 5.1.2. Semiological Aspects of the IM
 - 5.1.2.1. Pulsology
 - 5.1.2.2. Neurofocal Dentistry, Oral Health, and TMJ
 - 5.1.2.3. Posturology and Kinetic Chains
 - 5.1.2.4. Chronobiology
 - 5.1.2.5. Chronobiology from Biochemistry
- 5.2. Erythrocyte Fatty Acids
- 5.3. Bone Metabolism
- 5.4. Heavy Metal Test
- 5.5. Study of the Microbiota and Intestinal Permeability
- 5.6. Genetic Tests
- 5.7. Food Intolerance
- 5.8. GSE Allergies, Celiac Disease

- 5.9. Health Technology
 - 5.9.1. Bioresonance
 - 5.9.2. Thermography
- 5.10. Other Diagnostic Techniques
 - 5.10.1. Other Diagnostic techniques Part I
 - 5.10.2. Other Diagnostic techniques Part II

Module 6. Environmental Medicine

- 6.1. Basic Concepts of Toxicology
- 6.2. Diseases Caused by Environmental Factors
 - 6.2.1. Respiratory Allergies
 - 6.2.2. Cardiovascular Disease and Heavy Metals
 - 6.2.3. Cancer and Autoimmune Diseases as an Environmental Disease
 - 6.2.4. Chronic Fatigue Syndrome
 - 6.2.5. Central Sensitivity Syndrome
 - 6.2.6. Fibromyalgia
- 6.3. Electromagnetism
- 6.4. Chemical and Nutritional Sensitivities
- 6.5. Endocrine Disruptors
- 6.6. Creating Optimal Environments for the Restoration of Health

Module 7. Approach to Frequent Chronic Diseases in Integrative Medicine

- 7.1. Environmental Illnesses
 - 7.1.1. Fibromyalgia
 - 7.1.2. Chronic Fatigue
 - 7.1.3. Electrosensitivity
 - 7.1.4. Multiple Chemical Sensitivity
- 7.2. Dermatology
- 7.3. Digestive System
 - 7.3.1. Gastritis
 - 7.3.2. Liver Diseases
 - 7.3.3. Celiac Disease in Adults

- 7.4. Respiratory System
 - 7.4.1. Asthma
 - 7.4.2. Allergy
 - 7.4.3. COPD
- 7.5. Neurology
 - 7.5.1. Migraines
 - 7.5.2. Epilepsy
 - 7.5.3. CVA
 - 7.5.4. Peripheral Neuropathies

Module 8. Approach to Frequent Chronic Diseases in Integrative Medicine II

- 8.1. Oncology
 - 8.1.1. Molecular Mechanisms
- 8.2. Diet Therapy in Cancer
- 8.3. Approach Techniques in Oncology
 - 8.3.1. Oncothermia and Hyperthermia
 - 8.3.2. Metabolic Treatment
 - 8.3.3. Endovenous Techniques
 - 8.3.4. Supplementation and Interactions
 - 8.3.5. Aromatherapy
 - 8.3.6. Mind-body Techniques
- 8.4. Palliative Care
- 8.5. Endocrine
 - 8.5.1. Obesity
 - 8.5.2. Thyroid Disease
 - 8.5.2.1. Hypothyroidism
 - 8.5.2.2. Hyperthyroidism
 - 8.5.2.3. Thyroid Physiology and Multinodular Goiter. Solitary Thyroid Nodule
 - 8.5.3. Adrenal Gland Disorders
 - 8.5.4. Insulin Resistance and Diabetes

- 8.6. Locomotor System
 - 8.6.1. Osteoarticular Pathology
 - 8.6.2. Rachis Pathology
 - 8.6.2.1. Movement Sciences Approach
 - 8.6.2.2. Visceral Osteopathy Approach
 - 8.6.2.3. Pain Relieving Techniques
 - 8.6.3. Arthritis
 - 8.6.3.1. Other Injuries. Arthralgia and Myalgia
- 8.7. Nephrology
 - 8.7.1. Renal Lithiasis
 - 8.7.2. Glomerulonephritis
 - 8.7.3. Chronic Renal Insufficiency
- 8.8. Infectious Diseases
 - 8.8.1. Lyme Disease
 - 8.8.2. Slow Virus Disease
 - 8.8.2.1. EBV, CMV, HSV, VZV
- 8.9. Cardiovascular

Module 9. Ethical and Legal Aspects

- 9.1. Cooperation in the Practice of ICTM (Bioethics)
- 9.2. Ethics in Clinical Decision-Making
- 9.3. Legislation, Scopes of Action

07

Clinical Internship

Once the academic experience is completed, the graduate will be able to enjoy 120 hours in a reference clinical center, where they will be able to put into practice everything developed throughout the syllabus. In this way, they will be able to learn first-hand and in detail the most innovative techniques of intervention in Integrative Medicine, assisting patients with different pathologies. In addition, they will be accompanied at all times by a specialist tutor who will ensure that their internship is as enriching as possible.



“

It is 120 hours in which you will be able to address chronic diseases in a comprehensive manner”

The Internship Program consists of a practical stay in a prestigious center, a 3-week period, from Monday to Friday with 8 consecutive hours of work with an attending specialist. This stay will allow them to deal with real patients with a team of reference professionals in the field of integrative medicine, applying the most innovative diagnostic procedures and planning the latest generation of therapy in each pathology.

In this completely practical Internship Program, the activities are aimed at developing and perfecting the skills necessary to provide healthcare care in areas and conditions that require highly qualified professionals, and are oriented towards specific expertise for practicing the activity, in a safe environment for the patient and with highly professional performance.

It is undoubtedly a unique opportunity to learn by working in a clinic of the future where real-time health monitoring of patients is at the center of the digital culture of its professionals. This is a new way of understanding and integrating the latest healthcare processes, and turning a reference center into the ideal teaching scenario for this innovative experience in the improvement of professional competencies.

The practical part will be carried out with the active participation of the student performing the activities and procedures of each area of knowledge (learning to learn and learning to do), with the accompaniment and guidance of teachers and other fellow trainees that facilitate teamwork and multidisciplinary integration as transversal competencies for the practice of Integrative Medicine (learning to be and learning to relate).





The procedures described below will form the basis of the practical part of the training, and their implementation is subject to both the suitability of the patients and the availability of the center and its workload, with the proposed activities being as follows:

Module	Practical Activity
Approach Strategies in Integrative Medicine	Apply the biological approach of Integrative Medicine to diagnose and treat the patient, taking into account variables such as the interrelation of physiological systems, mitochondrial dysfunction or mucosal permeability syndromes
	Perform a comprehensive assessment of the patient, considering their lifestyle and daily routines, in order to offer the best solutions in Integrative Medicine
	Assess the patient from a global perspective that takes into account the patient's sociological, environmental and psychological circumstances
	Approach the anamnesis from the Integrative Medicine approach, gathering the specific information needed by this discipline to make diagnoses and propose treatments
Approach of Chronic and Frequent Diseases in Integrative Medicine	Assess and diagnose environmental diseases
	Assess the digestive, respiratory, neurological and endocrine systems of patients, proposing specific Integrative Medicine treatments
	Assess the musculoskeletal and cardiovascular systems
	Examine oncological aspects and signs of infectious diseases
	Analyze the patient's immune system
	Apply neuropsychiatry and biological decoding in the diagnostic process
Clinical Analysis in the Diagnostic Process in Integrative Medicine	Analyze the presence of erythrocyte fatty acids
	Analyze the patient's bone metabolism
	Apply heavy metal and genetic tests
	Study the microbiota and intestinal permeability of the patient
	Diagnose, through laboratory tests, intolerances and allergies

Civil Liability Insurance

This institution's main concern is to guarantee the safety of the trainees and other collaborating agents involved in the internship process at the company. Among the measures dedicated to achieve this is the response to any incident that may occur during the entire teaching-learning process.

To this end, this entity commits to purchasing a civil liability insurance policy to cover any eventuality that may arise during the course of the internship at the center.

This liability policy for interns will have broad coverage and will be taken out prior to the start of the practical training period. That way professionals will not have to worry in case of having to face an unexpected situation and will be covered until the end of the internship program at the center.



General Conditions of the Internship Program

The general terms and conditions of the internship agreement for the program are as follows:

1. TUTOR: During the Hybrid Professional Master's Degree, students will be assigned with two tutors who will accompany them throughout the process, answering any doubts and questions that may arise. On the one hand, there will be a professional tutor belonging to the internship center who will have the purpose of guiding and supporting the student at all times. On the other hand, they will also be assigned with an academic tutor whose mission will be to coordinate and help the students during the whole process, solving doubts and facilitating everything they may need. In this way, the student will be accompanied and will be able to discuss any doubts that may arise, both clinical and academic.

2. DURATION: The internship program will have a duration of three continuous weeks, in 8-hour days, 5 days a week. The days of attendance and the schedule will be the responsibility of the center and the professional will be informed well in advance so that they can make the appropriate arrangements.

3. ABSENCE: If the students does not show up on the start date of the Hybrid Professional Master's Degree, they will lose the right to it, without the possibility of reimbursement or change of dates. Absence for more than two days from the internship, without justification or a medical reason, will result in the professional's withdrawal from the internship, therefore, automatic termination of the internship. Any problems that may arise during the course of the internship must be urgently reported to the academic tutor.

4. CERTIFICATION: Professionals who pass the Hybrid Professional Master's Degree will receive a certificate accrediting their stay at the center.

5. EMPLOYMENT RELATIONSHIP: the Hybrid Professional Master's Degree shall not constitute an employment relationship of any kind.

6. PRIOR EDUCATION: Some centers may require a certificate of prior education for the Hybrid Professional Master's Degree. In these cases, it will be necessary to submit it to the TECH internship department so that the assignment of the chosen center can be confirmed.

7. DOES NOT INCLUDE: The Hybrid Professional Master's Degree will not include any element not described in the present conditions. Therefore, it does not include accommodation, transportation to the city where the internship takes place, visas or any other items not listed

However, students may consult with their academic tutor for any questions or recommendations in this regard. The academic tutor will provide the student with all the necessary information to facilitate the procedures in any case.

08

Where Can I Do the Clinical Internship?

For the choice of the internships, TECH has put the selected centers through a test of maximum quality and exigency, in order to guarantee a 100% enriching experience for the graduate. In this way, they will be able to work for 120 hours under the guidance of experts in the sector with an extensive professional background and in a clinic where they will be able to update their knowledge thanks to the use of the most advanced professional medical tools.






“

You will be able to complete the internship in a national reference clinical center, which will give you access to the best and most cutting-edge medical tools”



The student will be able to complete the internship of this Hybrid Professional Master's Degree at the following centers:



Medicine

Clínica Keval

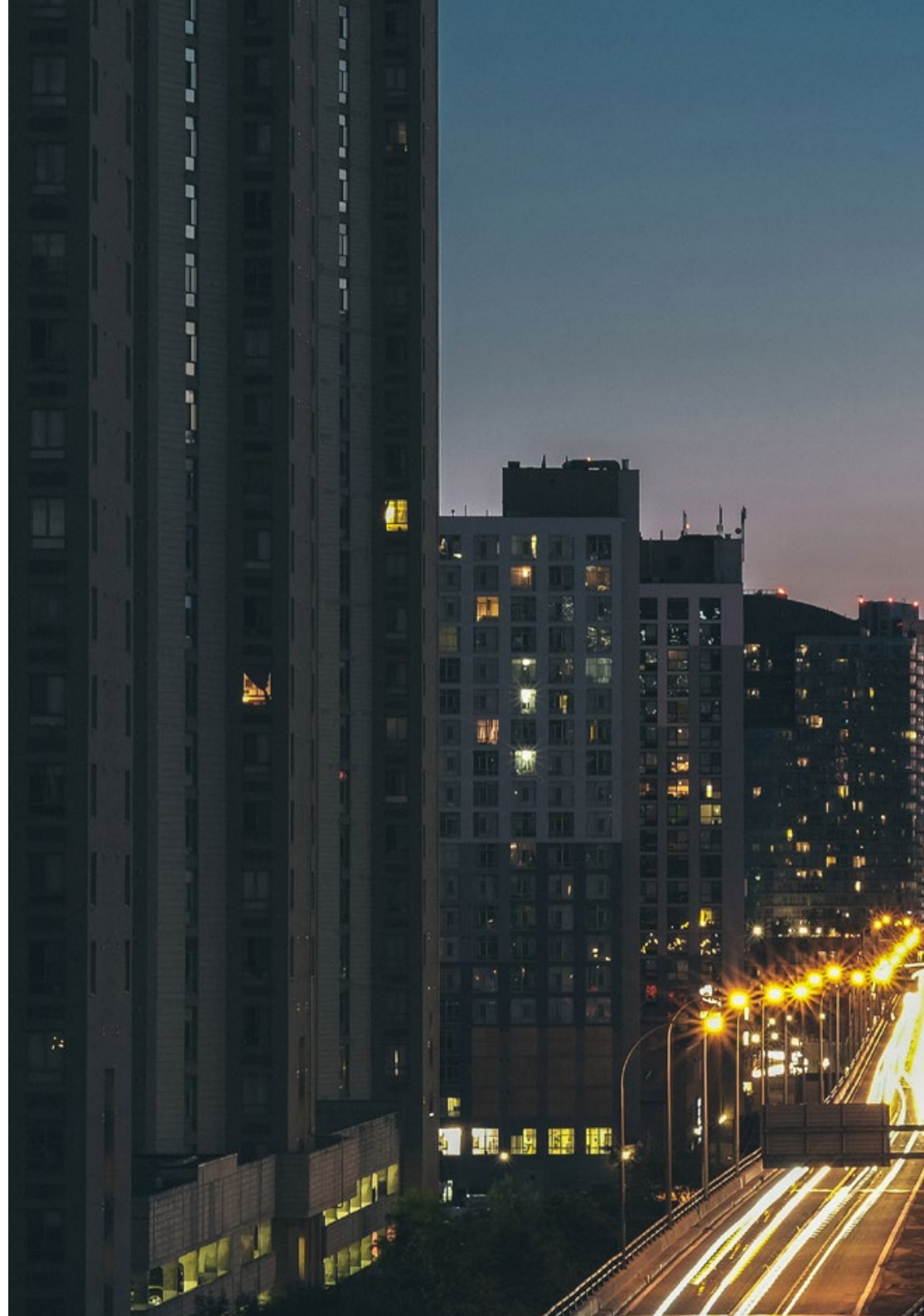
Country	City
Spain	Valence


Address: Carrer d'Eduard Boscà, nº 24, bajo,
46023 Valencia

Clinical center for integrative and nutritional assistance

Related internship programs:

- Nursing in Integrative Medicine
- Integrative Medicine and Health





Medicine

Clínica Ume

Country	City
Spain	Alicante

Address: Plaza de la Montanyeta 1

Clínica Ume offers a reference medical service with avant-garde clinical studies that relies on the latest advances in technology and research.

Related internship programs:
- Integrative Medicine and Health



Delve into the most relevant theory in this field, subsequently applying it in a real work environment”

09

Methodology

This academic program offers students a different way of learning. Our methodology uses a cyclical learning approach: **Relearning**.

This teaching system is used, for example, in the most prestigious medical schools in the world, and major publications such as the **New England Journal of Medicine** have considered it to be one of the most effective.





“

Discover Relearning, a system that abandons conventional linear learning, to take you through cyclical teaching systems: a way of learning that has proven to be extremely effective, especially in subjects that require memorization"

At TECH we use the Case Method

What should a professional do in a given situation? Throughout the program, students will face multiple simulated clinical cases, based on real patients, in which they will have to do research, establish hypotheses, and ultimately resolve the situation. There is an abundance of scientific evidence on the effectiveness of the method. Specialists learn better, faster, and more sustainably over time.

With TECH you will experience a way of learning that is shaking the foundations of traditional universities around the world.



According to Dr. Gérvas, the clinical case is the annotated presentation of a patient, or group of patients, which becomes a "case", an example or model that illustrates some peculiar clinical component, either because of its teaching power or because of its uniqueness or rarity. It is essential that the case is based on current professional life, trying to recreate the real conditions in the physician's professional practice.

“

Did you know that this method was developed in 1912, at Harvard, for law students? The case method consisted of presenting students with real-life, complex situations for them to make decisions and justify their decisions on how to solve them. In 1924, Harvard adopted it as a standard teaching method”

The effectiveness of the method is justified by four fundamental achievements:

1. Students who follow this method not only achieve the assimilation of concepts, but also a development of their mental capacity, through exercises that evaluate real situations and the application of knowledge.
2. Learning is solidly translated into practical skills that allow the student to better integrate into the real world.
3. Ideas and concepts are understood more efficiently, given that the example situations are based on real-life.
4. Students like to feel that the effort they put into their studies is worthwhile. This then translates into a greater interest in learning and more time dedicated to working on the course.



Relearning Methodology

At TECH we enhance the case method with the best 100% online teaching methodology available: Relearning.

This university is the first in the world to combine the study of clinical cases with a 100% online learning system based on repetition, combining a minimum of 8 different elements in each lesson, a real revolution with respect to the mere study and analysis of cases.

Professionals will learn through real cases and by resolving complex situations in simulated learning environments. These simulations are developed using state-of-the-art software to facilitate immersive learning.



At the forefront of world teaching, the Relearning method has managed to improve the overall satisfaction levels of professionals who complete their studies, with respect to the quality indicators of the best online university (Columbia University).

With this methodology, more than 250,000 physicians have been trained with unprecedented success in all clinical specialties regardless of surgical load. Our pedagogical methodology is developed in a highly competitive environment, with a university student body with a strong socioeconomic profile and an average age of 43.5 years old.

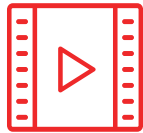
Relearning will allow you to learn with less effort and better performance, involving you more in your specialization, developing a critical mindset, defending arguments, and contrasting opinions: a direct equation to success.

In our program, learning is not a linear process, but rather a spiral (learn, unlearn, forget, and re-learn). Therefore, we combine each of these elements concentrically.

The overall score obtained by TECH's learning system is 8.01, according to the highest international standards.



This program offers the best educational material, prepared with professionals in mind:



Study Material

All teaching material is produced by the specialists who teach the course, specifically for the course, so that the teaching content is highly specific and precise.

These contents are then applied to the audiovisual format, to create the TECH online working method. All this, with the latest techniques that offer high quality pieces in each and every one of the materials that are made available to the student.



Surgical Techniques and Procedures on Video

TECH introduces students to the latest techniques, the latest educational advances and to the forefront of current medical techniques. All of this in direct contact with students and explained in detail so as to aid their assimilation and understanding. And best of all, you can watch the videos as many times as you like.



Interactive Summaries

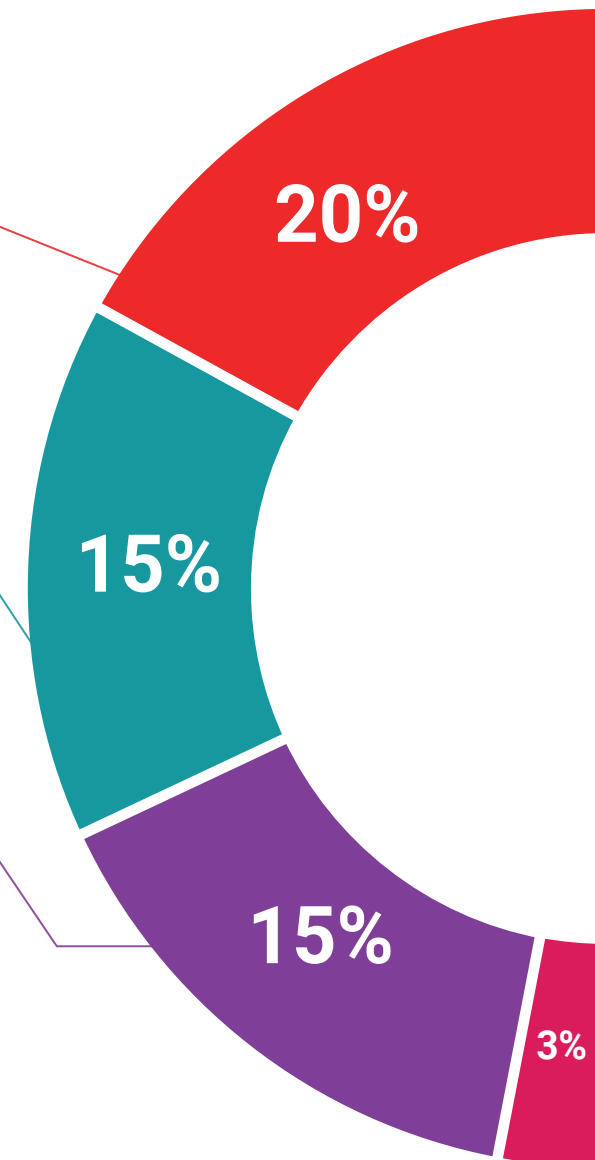
The TECH team presents the contents attractively and dynamically in multimedia lessons that include audio, videos, images, diagrams, and concept maps in order to reinforce knowledge.

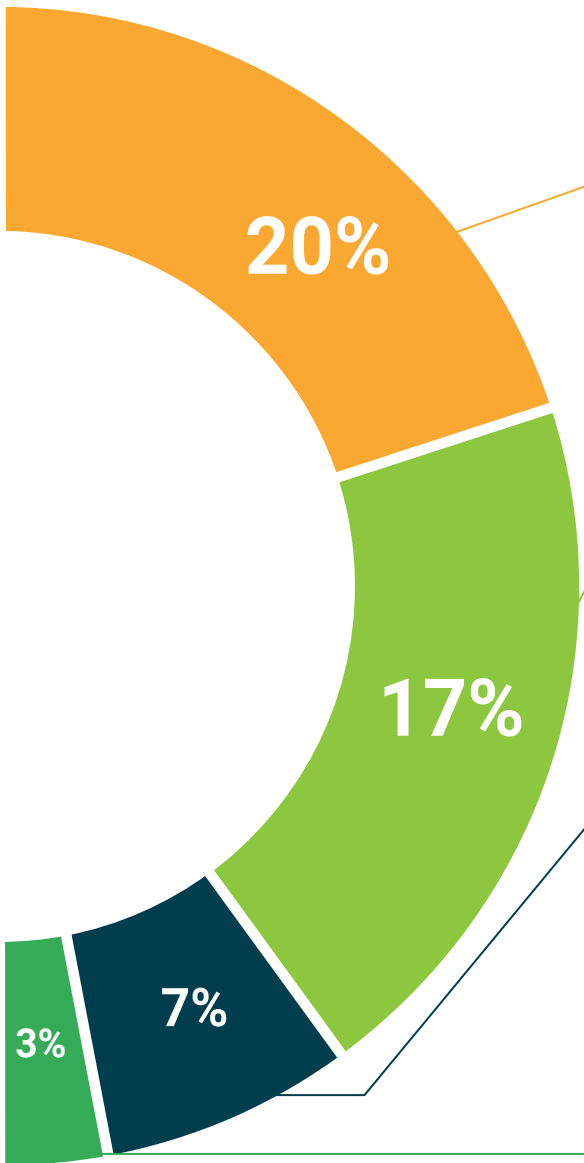
This exclusive educational system for presenting multimedia content was awarded by Microsoft as a "European Success Story".



Additional Reading

Recent articles, consensus documents and international guidelines, among others. In TECH's virtual library, students will have access to everything they need to complete their course.





Expert-Led Case Studies and Case Analysis

Effective learning ought to be contextual. Therefore, TECH presents real cases in which the expert will guide students, focusing on and solving the different situations: a clear and direct way to achieve the highest degree of understanding.



Testing & Retesting

We periodically evaluate and re-evaluate students' knowledge throughout the program, through assessment and self-assessment activities and exercises, so that they can see how they are achieving their goals.



Classes

There is scientific evidence on the usefulness of learning by observing experts. The system known as Learning from an Expert strengthens knowledge and memory, and generates confidence in future difficult decisions.



Quick Action Guides

TECH offers the most relevant contents of the course in the form of worksheets or quick action guides. A synthetic, practical, and effective way to help students progress in their learning.



10 Certificate

The Hybrid Professional Master's Degree in Integrative Medicine and Health guarantees students, in addition to the most rigorous and up-to-date education, access to a Hybrid Professional Master's Degree diploma issued by TECH Technological University.



“

Successfully complete this program and receive your university qualification without having to travel or fill out laborious paperwork”

This **Hybrid Professional Master's Degree in Integrative Medicine and Health** contains the most complete and up-to-date program on the professional and scientific field.

After the student has passed the assessments, they will receive their corresponding Hybrid Professional Master's Degree diploma issued by TECH Technological University via tracked delivery*.

In addition to the diploma, students will be able to obtain an academic transcript, as well as a certificate outlining the contents of the program. In order to do so, students should contact their academic advisor, who will provide them with all the necessary information.

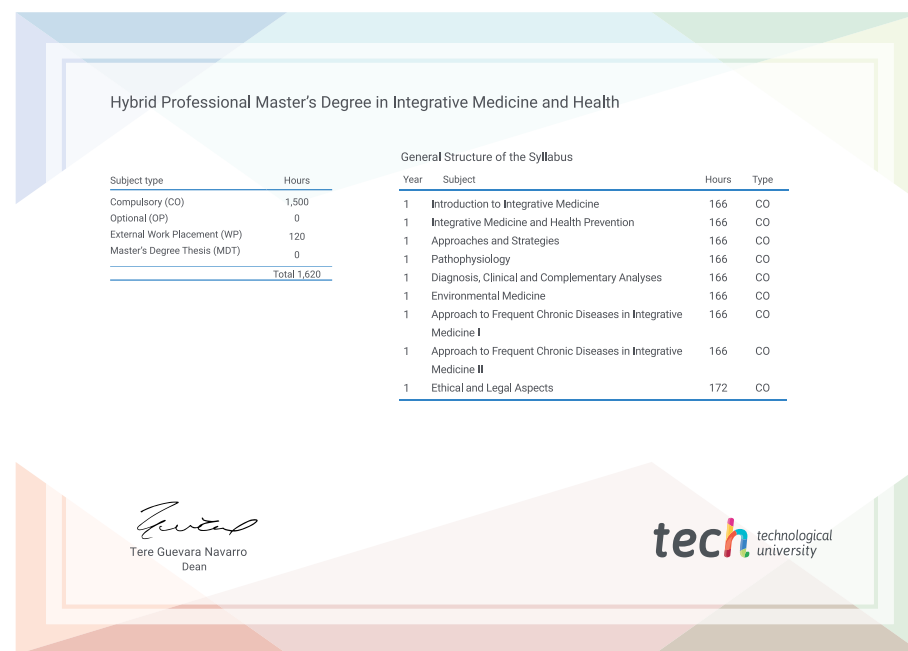
Title: **Hybrid Professional Master's Degree in Integrative Medicine and Health**

Modality: **Hybrid (Online + Clinical Internship)**

Duration: **12 months**

Certificate: **TECH Technological University**

Teaching Hours: **1,620 h.**



*Apostille Convention. In the event that the student wishes to have their paper diploma issued with an apostille, TECH EDUCATION will make the necessary arrangements to obtain it, at an additional cost.



Hybrid Professional Master's Degree Integrative Medicine and Health

Modality: Hybrid (Online + Clinical Internship)

Duration: 12 months

Certificate: TECH Technological University

Teaching Hours: 1,620 h

Hybrid Professional Master's Degree

Integrative Medicine and Health

