

# Hybrid Master's Degree

Update on Psychiatric Treatments in Child  
and Adolescent Patients





## Hybrid Master's Degree

### Update on Psychiatric Treatments in Child and Adolescent Patients

Modality: Hybrid (Online + Clinical Internship)

Duration: 12 months

Certificate: TECH Global University

Accreditation: 60 + 4 ECTS

Website: [www.techtute.com/us/medicine/hybrid-master-degree/hybrid-master-degree-update-psychiatric-treatments-child-adolescent-patients](http://www.techtute.com/us/medicine/hybrid-master-degree/hybrid-master-degree-update-psychiatric-treatments-child-adolescent-patients)

# Index

01

Introduction

---

p. 4

02

Why Study this Hybrid Master's Degree?  
Objectives

---

p. 8

03

---

p. 12

04

Skills

---

p. 18

05

Course Management

---

p. 22

06

Educational Plan

---

p. 30

07

Clinical Internship

---

p. 42

08

Where Can I Do the Clinical Internship?

---

p. 48

09

Methodology

---

p. 54

10

Certificate

---

pág.62

# 01

# Introduction

There is a high rate of clinical psychiatric syndromes in patients under 18 years of age today. Major depression and other depressive disorders, substance dependence, schizophrenia, bulimia nervosa, anorexia, attention deficit hyperactivity disorder, autism spectrum disorder, among many others that must be attended by specialists updated with the latest scientific studies to ensure a more effective therapeutic processes. That is why TECH has developed this blended learning program in which you will be able to advance with the comfort and quality that today's professional needs. It will be 12 months of study, with the most advanced scientific, technological and human resources that only this academic platform can make available to you.





“

*This Hybrid Master's Degree offers you 100% online content and a 3-week internship in a state-of-the-art clinical center for you to update the treatments and diagnoses of Clinical Psychiatric Syndromes in Minors”*

Keeping medical knowledge up to date with new advances in Child Psychiatry is the goal of this exclusive TECH program that combines two effective study methods. Between theory and practice, the professional will be able to check the development of new diagnostic and therapeutic advances in the most common clinical psychiatric syndromes in today's populations.

Within the advances in Treatment in Child and Adolescent Psychiatry, the professional through this program will be able to design integrated therapeutic interventions, manage psychotropic drugs in a relevant way in childhood and adolescence, as well as develop protocols and tools that allow intervention with guarantees. In this way, the specialist will develop professional skills in Child Psychiatry and will implement new clinical management strategies in the area.

On the other hand, through the study of this Hybrid Master's Degree the professional will perfect the clinical skills of interview, examination and diagnosis in child psychiatry. But also, they will be able to support and lead activities aimed at integration into the working world, designing coordination protocols with adult mental health services. All this will provide an updated, comprehensive and powerful profile that will allow them to stand out in their environment with expanded competencies to develop their career beyond the consulting room. All this will provide an updated, comprehensive and powerful profile that will allow them to stand out in their environment with expanded competencies to develop their career beyond the consulting room. In addition, these exclusive sessions will give you the opportunity to get up to date with the most recent scientific evidence in the approach to the main pathologies and mental disorders.

This unique opportunity to study, from the hand of expert psychiatrists and a multidisciplinary team that will accompany you and others who have configured the content of this space, makes possible a high quality program available through the most advanced technology and methodology offered by the TECH study platform. Therefore, in just 12 months you will have a new qualification that will bring you up to date with the latest updates in Psychiatric Treatment of Minor Patients.

This **Hybrid Master's Degree in Update on Psychiatric Treatments in Child and Adolescent Patients** contains the most complete and up-to-date scientific program on the market. The most important features include:

- ♦ More than 100 clinical cases presented by professional the health experts in Psychiatric Treatment
- ♦ The graphic, schematic, and practical contents with which they are created, provide scientific and practical information on the disciplines that are essential for professional practice
- ♦ Knowledge of everything involved in the assessment process, in order to carry out the most effective and specialized intervention possible
- ♦ Development of practical activities on the most advanced and up-to-date diagnostic and therapeutic techniques
- ♦ An algorithm-based interactive learning system for decision-making in the clinical situations presented throughout the course
- ♦ Practical clinical guides on approaching different conditions
- ♦ Special emphasis on test-based medicine and research methodologies in Clinical Psychiatric Syndromes
- ♦ All of this will be complemented by theoretical lessons, questions to the expert, debate forums on controversial topics, and individual reflection assignments
- ♦ Content that is accessible from any fixed or portable device with an Internet connection
- ♦ Furthermore, you will be able to carry out a clinical internship in one of the best Clinical Analysis centers

“

*You will enjoy an intensive 3-week stay in a reference clinical center and you will be updated on the most advanced technological resources and diagnostic methods in Clinical Psychiatric Syndromes in children under 18 years of age”*

In this Professional Master's Degree proposal, of professionalizing character and blended learning modality, the program is aimed at updating professionals who develop their functions in Psychiatry, and who require a high level of qualification. The contents are based on the latest scientific evidence, and oriented in a didactic way to integrate theoretical knowledge in health practice, and the theoretical-practical elements will facilitate the updating of knowledge and allow decision making in patient management.

Thanks to their multimedia content developed with the latest educational technology, they will allow the medical professional to obtain a situated and contextual learning, that is, a simulated environment that will provide immersive learning programmed to train in real situations. The design of this program is focused on Problem-Based Learning, by means of which the student must try to solve the different professional practice situations that will be presented throughout the program. For this purpose, students will be assisted by an innovative interactive video system created by renowned experts in the field of educational coaching with extensive experience.

*This Hybrid Master's Degree includes a methodology that will allow you to study wherever you are and at the time you decide, adjusting your schedule without inconveniences.*

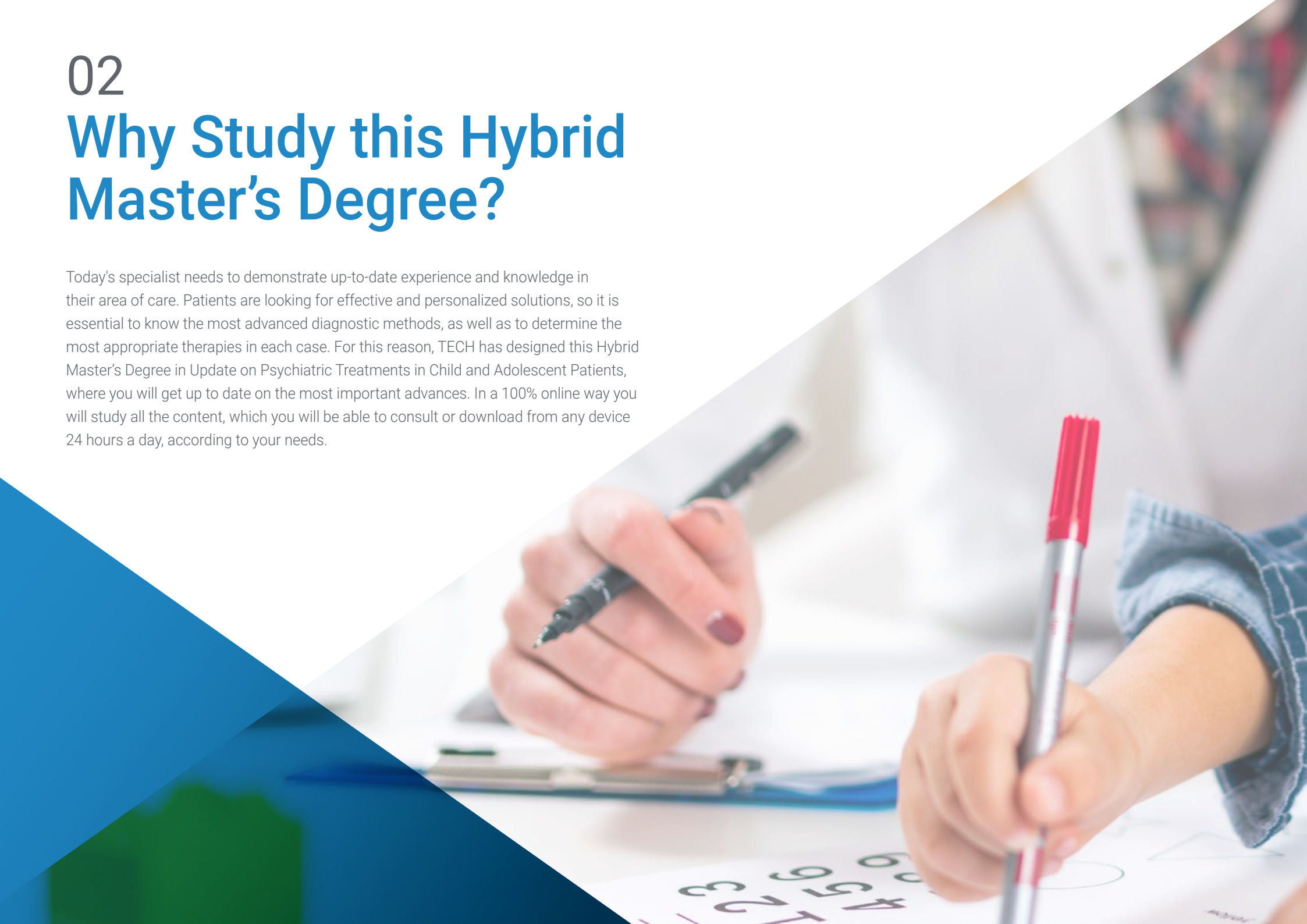
*A complete content that includes among its agenda the new legal requirements for the psychiatric hospitalization of children and adolescents.*



# 02

## Why Study this Hybrid Master's Degree?

Today's specialist needs to demonstrate up-to-date experience and knowledge in their area of care. Patients are looking for effective and personalized solutions, so it is essential to know the most advanced diagnostic methods, as well as to determine the most appropriate therapies in each case. For this reason, TECH has designed this Hybrid Master's Degree in Update on Psychiatric Treatments in Child and Adolescent Patients, where you will get up to date on the most important advances. In a 100% online way you will study all the content, which you will be able to consult or download from any device 24 hours a day, according to your needs.





“

*Thanks to the study dynamics of this program, you will easily master the advances in genetics in Child Psychiatry, among other studies”*

### 1. Updating from the latest technology available

Therapeutic and diagnostic methods in psychiatry have advanced in recent years. In view of the increase of cases of various clinical syndromes, the subject of mental health has gained importance. Therefore, TECH with this program aims to update the professional in an environment equipped with the most specialized technical and human resources.

### 2. Gaining in-depth knowledge from the experience of top specialists

For the development of this program TECH has relied on a team of experienced specialists. As a result, each section has a seal of guarantee and quality based on the latest scientific evidence, with the most updated procedures and methods. In addition, for the practical part it has considered the best clinical centers with the most experienced staff that will accompany the professional throughout the 120 hours of practice.

### 3. Entering first-class clinical environments

Different leading clinical centers around the world have established an agreement with TECH to be part of this innovative model of professional education. Thanks to this, the specialist will have guaranteed access to a prestigious clinical environment in the area of Psychiatry. Therefore, you will be kept up to date with new advances in treatments for minor patients.





#### 4. Combining the best theory with state-of-the-art practice

This Hybrid Master's Degree is a combination of two effective teaching methods that will allow the professional to advance in his or her career in an easy and comfortable way. You will have the theoretical study 100% online, adjusted to your schedule and location, as well as the Internship Program of 3 intensive weeks in a clinical center of reference that can be chosen by the student. A unique opportunity that only TECH can offer.

#### 5. Expanding the boundaries of knowledge

With TECH, the student can choose the internship center that best suits their needs, within a catalog of options worldwide. Always focused on innovation and guaranteeing a quality academic process. In this way, the student expands their frontiers and will be updated with the most knowledgeable experts from different continents.

“

*You will have full practical immersion  
at the center of your choice”*

# 03 Objectives

This program contemplates several specific objectives that delve in detail into the results of the study of each of the theoretical and practical aspects of the syllabus developed by experts. This will allow the student to acquire the necessary competencies to be updated in the profession after deepening in the key aspects of Psychiatric Treatments in Minor Patients. The knowledge poured in the development of the points of the syllabus will drive the professional to keep the medical knowledge up to date with the new advances in Child Psychiatry from a global perspective.



“

*With this Hybrid Master's Degree,  
you will integrate evidence-based  
medicine into daily practice”*



## General Objective

---

- The general objective of this blended learning program designed by TECH's expert team is to bring the medical professional up to date with the most effective procedures and interventions in the field of psychiatric treatment in the infantile and juvenile stage. For this purpose, a curriculum has been designed based on the latest scientific evidence and configured by experts in the field who have integrated all their experience and clinical rigor in each of the sections. The aim is for the specialist to approach their daily practice and consultation in a much more updated way and provide their patients with advanced solutions



*Get up to date with psychiatric treatments in minor patients in just 12 months and 100% online, and enjoy a practice session for 3 weeks"*





## Specific Objectives

---

### Module 1. Psychiatry in the Different Stages of Life

- ♦ Describe the genetic and biochemical bases of human beings
- ♦ Access the knowledge and understand of the different mental functions in the first stages of a human's life
- ♦ Know how to differentiate between the psychological disorders in the natural evolutionary changes
- ♦ Identify the factors which influence the integral development of a human being in the first stages of development
- ♦ Explain the contribution of various scientific sources to the field of child and adolescent psychiatry and psychotherapy

### Module 2. Clinical Syndromes in Child and Adolescent Psychiatry

- ♦ Define the main psychopathological and clinical issues that occur in childhood and adolescence
- ♦ Understand the specificities of clinical presentation specific to different stages of development
- ♦ Delve into the methods of clinical diagnosis in the different psychopathological processes
- ♦ Know how to perform psychodiagnostic sequencing in childhood and adolescence
- ♦ Be able to perform a differential diagnosis taking into account the evolutionary stage of the patient

### Module 3. Psychopathology in Childhood

- ♦ Be aware of the criteria for establishing a correct differential diagnosis of the different clinical and psychopathological pictures that present themselves in childhood and adolescence
- ♦ Manage the different classification systems of mental disorders in childhood and adolescence, especially multi-axial types
- ♦ Describe the clinical evaluation and diagnostic procedures in childhood and adolescence
- ♦ Gain sufficient skills for establishing differential diagnosis criteria in childhood and adolescence

### Module 4. New Advances in Childhood Psychiatry

- ♦ Adequately assess the multicausality and causality of psychopathological and clinical disorders in childhood and adolescence
- ♦ Deepen knowledge of new diagnostic methods in childhood and adolescence
- ♦ Identify the treatment possibilities of psychopathological disorders in childhood and adolescence.
- ♦ Describe and respect bioethical approaches in childhood and adolescence

### Module 5. Liaison and Interconsultation Psychiatry: Psychosomatic Pedopsychiatry

- ♦ Value the interest of interconsultation-liaison work in its different modalities
- ♦ Acquire the skills to deal with child patients
- ♦ Develop techniques to achieve the motivation and active participation of a child or adolescent patient in the diagnosis and intervention process
- ♦ Establish therapeutic guidelines for each type of disorder detected
- ♦ Elaborate the most appropriate treatment for the clinical picture diagnosed

### Module 6. Advances in Treatments in Child and Adolescent Psychiatry

- ♦ Design integrates therapeutic interventions
- ♦ Gain skills in the relevant management of psychotropic drugs in childhood and adolescence
- ♦ Apply the principles of inter-institutional and community work to children and adolescents due to the specific peculiarities of child and adolescent institutions
- ♦ Provide the professional with the ability to identify with the logic of the patient according to their age and the disorder
- ♦ Understand the scientific method applied to research in psychiatry and psychotherapy in childhood and adolescence
- ♦ Become familiar with epidemiological and developmental psychopathology research procedures

### Module 7. Child and Adolescent Psychiatric Emergencies

- ♦ Perform research in the field of childhood and adolescence
- ♦ Develop protocols and tools that allow for intervention with safeguards
- ♦ Develop early detection and intervention plans in the perinatal period
- ♦ Pragmatically approach emergency psychiatric situations in childhood and adolescence







### **Module 8. Professional Skills in Child Psychiatry**

- ◆ Acquire the skills and strategies for clinical management in psychiatry
- ◆ Master the skills for efficient communication and establish leadership in childhood psychiatry

### **Module 9. Clinical Management in Psychiatry**

- ◆ Define the characteristics of intervention in schools
- ◆ Design coordination protocols with adult mental health services
- ◆ Support and lead activities aimed at integration into the labor market

### **Module 10. Community Intervention in Childhood Psychiatry**

- ◆ Master knowledge of the childhood and adolescence peculiarities of medical-legal aspects in Childhood Psychiatry
- ◆ Understand the working of the social services



*Delve into the most relevant theory in this field, subsequently applying it in a real work environment"*

# 04 Skills

Upon completion of this curriculum and after passing the evaluations of the Hybrid Master's Degree in Updating Psychiatric Treatments in Minor Patients, the medical professional will have acquired the professional competencies necessary for specialized, innovative and effective care, updated on the basis of the latest scientific evidence.



“

*With this program you will update your diagnostic and therapeutic methods for patients with psychiatric syndromes in an effective manner”*



## General Skills

---

- ♦ Master knowledge of psychopathologies in childhood and adolescence
- ♦ Use psychiatric epidemiology to prevent and treat illnesses
- ♦ Provide expert treatment of perinatal psychiatric problems
- ♦ Resolve specific problems of liaison and interconsultation psychiatry in childhood and adolescence
- ♦ Acquire skills for clinical interviews, examinations and diagnosis in Childhood Psychiatry
- ♦ Master the skills for scientific research in Childhood Psychiatry
- ♦ Master professional communication skills
- ♦ Develop leadership skills in childhood and adolescent psychiatry
- ♦ Integrate evidence-based medicine into daily practice
- ♦ Gain the skills to be able to offer psychological support
- ♦ Know how to update therapeutic plans to meet the most current standards

“

*Improve your curricular profile with this Hybrid Master's Degree that deals with the most updated treatments in Child and Adolescent Psychiatry”*





## Specific Skills

---

- ♦ Keep physicians' knowledge of new advances in childhood psychiatry up to date
- ♦ Master the differential epidemiology of the young adult (or older adolescent)
- ♦ Master knowledge on the genetic advances in childhood psychiatry
- ♦ Understand the influence of genes in neurobiological development
- ♦ Recognize the genetic influences in normal and abnormal development of a child
- ♦ Appreciate, understand and provide guidance in cases of divorce, separation and new forms of cohabiting
- ♦ Understand and master the legal requirements for the psychiatric hospitalization of children and adolescents
- ♦ Understand the functioning of mental health in the juvenile justice system
- ♦ Understand the risks (and preventative actions) of malpractice (iatrogenies) and professional responsibilities
- ♦ Consolidate knowledge of the importance of coordination with adult mental health services
- ♦ Develop knowledge of and assess the functioning of the transition procedures between services
- ♦ Develop knowledge of and assess the functioning of protocols for the first psychotic episodes
- ♦ Develop knowledge of and evaluate the functioning of ADHD and autism protocols after a few years
- ♦ Highlight the importance of mental health professionals in the integration into the world of work

05

# Course Management

This Hybrid Master's Degree contains a dynamic and advanced teaching methodology taught 100% online and made possible thanks to the intervention of an expert teaching team in Psychiatry and other medical specialties.

Therefore, the professional will find a content based on the latest scientific evidence and with own resources of the Updates of Psychiatric Treatments in Minor Patients.





“

*Leading professionals have shaped the curriculum of this program, which gives it a seal of quality and timeliness”*

## International Guest Director

Included as one of the "most influential minds" in the Clarivate list and with more than 40 research awards, Dr. Chirstoph U. Correll is one of the major references in the field of Psychiatry. He has developed his professional, teaching and scientific career in Germany, Great Britain and the United States.

His passion for this specialty led him to focus his efforts on the study of the identification and treatment of young people and adults with severe mental illnesses. He has also conducted numerous clinical trials and has delved into areas such as Schizophrenia, Bipolar Disorder, Major Depression and other psychotic disorders.

Correll has also focused on the analysis of mood and autism/behavioral spectrum disorders, ranging from the prodrome to the first episode, patients with multiple episodes and refractory illnesses. The result of his hard work is reflected in the more than 700 journal papers in the more than 700 journal articles he has authored and co-authored, placing him with a Google Scholar Index h 136. He also has numerous publications, active participation in national and international conferences.

A great potential that is evident, in turn, in his performance as a professor in the classrooms of high-level academic institutions. In addition, he is an international reference in his facet as a communicator, which has led him to participate in media spaces, where he conveys information in a simple and direct way both to the public and to other experts in the same field.





## Dr. Correll, Christoph U.

---

- Director, Child Psychiatry Laboratory, The Feinstein Institute, New York, USA
- Researcher at the Center for Psychiatric Neuroscience Feinstein Institute for Medical Research
- Medical Director at Zucker Hillside Hospital in the Recognition and Prevention Program (RAP)
- Co-Director of the Child and Adolescent Psychiatry Lab at the Center for Psychiatric Neuroscience at the Feinstein Institute for Medical Research
- Professor of Psychiatry at Hofstra/Northwell Zucker School of Medicine
- Professor and Head of the Department of Child and Adolescent Psychiatry at Charité University Medicine in Berlin
- Medical Degree from the Free University of Berlin and from the Faculty of Medicine of the University of Dundee
- Member of: International Society for Bipolar Disorders (ISBD), German Association of Child and Adolescent Psychiatry (DGKJP), Lundbeck International Neuroscience Foundation (LINF), Société Médico-Psychologique, Schizophrenia International Research Society (SIRS), American Society of Clinical Psychopharmacology (ASCP), International Early Psychosis Association (IEPA), Nordostdeutsche Gesellschaft für Psychiatrie, Psychotherapie und Psychosomatik des Kindes- und Jugendalters e. V. y European College of Neuropsychopharmacology (ECNP)



*Thanks to TECH you will be able to learn with the best professionals in the world"*

## Management



### Dr. Alda, José Angel

- ♦ Head of the Child and Adolescent Psychiatry Department at Sant Joan de Déu Hospital, Barcelona
- ♦ Degree in Medicine from the University of Zaragoza
- ♦ Specialist in Psychiatry
- ♦ PhD in Medicine and Surgery, from the University of Zaragoza
- ♦ Head of the ADHD Unit at Sant Joan de Déu Hospital, Barcelona
- ♦ Collaborating Researcher in the Research Group "Etiopatogènia i tractament dels trastorns mentals greus" ("Etiopathology and treatment of severe mental disorders") recognized as Consolidated Research Group by the Generalitat de Catalunya
- ♦ Collaborating Researcher in the Research Group "Etiopatogènia i tractament dels trastorns mentals greus" ("Etiopathology and treatment of severe mental disorders") recognized as Consolidated Research Group in the Parc Sanitari Sant Joan de Déu Group Coordinator Dr. Judith Usall i Rodié
- ♦ Member of the Spanish Association of Child and Adolescent Psychiatry (AEPNYA)
- ♦ Member of the Medical Sciences Academy of Catalunya
- ♦ Coordinator of the Clinical Practice Guide on ADHD for the Ministry of Health
- ♦ Member of the creation group of the Clinical Practice Guide on ADHD for the Ministry of Health
- ♦ Vice president of the Spanish Association of Child and Adolescent Psychiatry (AEPNYA)



### **Dr. Cantó Diez, Tomás J.**

- Coordinator of the Childhood Mental Health Unit, Alicante University General Hospital
- Child and juvenile psychiatrist in the Conselleria de Sanitat (Health Department)
- Psychiatrist at the Diagrama Foundation
- Child Mental Health Coordinator of Alicante in the Valencian Agency of Health
- Master's Degree in Clinical and Health Management in Mental Health
- Specialist in Psychiatry at the Hospital Clínic i Provincial de Barcelona
- Member of: American Academy of Child and Adolescent Psychiatry (AACAP), Sociedad de Psiquiatría de la Comunidad Valenciana (SPCV) and Spanish Society of Psychiatry (SEP)

## Professors

### Ms. Dolz Abadia, Montserrat

- ♦ Head of the Psychiatric and Psychology Unit at Sant Joan de Déu Hospital
- ♦ Advisor on Child and Adolescent Mental Health in the Master Plan for Mental Health and Addictions of the Generalitat de Catalunya
- ♦ Coordinator of the area of Child and Adolescent Mental Health in the Advisory Council of Mental Health of the Catalan Department of Health
- ♦ Degree in Medicine and Surgery from the University of Barcelona
- ♦ Specialist in Psychiatry from the University of Barcelona

### Ms. Hernández Otero, Isabel

- ♦ Coordinator of the Child and Adolescent Mental Health Unit at the HCU Virgen de la Victoria
- ♦ Master's Degree in Relational Psychotherapy from the University of Seville
- ♦ Master's Degree in Systemic Family Therapy from the Institute of Family Therapy in London
- ♦ University Expert in Health Services Management by the University of Granada
- ♦ University Expert in ADHD from the University of Alcalá de Henares
- ♦ Degree in Psychology from the UNED

### Dr. Imaz Roncero, Carlos

- ♦ Psychiatry Specialist in the Child and Adolescent Section at HU Río Hortega
- ♦ Director of Valladolid Salud
- ♦ Specialist in Psychiatry, Child and Adolescent Section at the Río Hortega Valladolid University Hospital
- ♦ Associate Professor in Psychiatry in the Faculty of Medicine at the University of Valladolid
- ♦ PhD from the University of Valladolid

### Dr. Mojarro Práxedes, Dolores

- ♦ Specialist in Child Psychiatry
- ♦ Researcher belonging to the Andalusian Research Group in Child and Adolescent Psychiatry
- ♦ Professor at the University of Seville in the area of Psychiatry
- ♦ Degree in Medicine

### Dr. Morey, Jaime

- ♦ Director of the Balearic Institute of Child and Adolescent Mental Health at Son Espases University Hospital
- ♦ Child and Adolescent Psychiatrist in St. David's HealthCare
- ♦ Child and Adolescent Psychiatrist in South Wales Managed Network for Child and Adolescent Mental Health
- ♦ Master's Degree in Psychiatry from the University of Barcelona
- ♦ Degree in Medicine and Surgery from the University of Zaragoza

### Dr. Pelaz Antolín, Antonio

- ♦ Specialist in Psychiatry and partner in Enclave Personal
- ♦ Professional Coach at CADAPA Associates
- ♦ Psychiatry Specialist in the Child Psychiatry Service at the San Carlos Madrid Clinical Hospital
- ♦ Doctorate in Medicine, University of Alcalá



#### Dr. Rubio, Belén

- ♦ Interconsultation and Liaison Unit of Child and Adolescent Psychiatry at the University Hospital in Canary Islands
- ♦ Coordinator of Child and Adolescent Mental Health in the province of Tenerife at the University Hospital of the Canary Islands
- ♦ Psychiatrist, Interconsultation and Liaison Unit of Child and Adolescent Psychiatry at the University Hospital of the Canary Islands
- ♦ Degree in Medicine and Surgery from the University of Valencia

“

*Stand out in your professional sector with this specialized program and update your daily clinical practice in Psychiatry”*

# 06

## Educational Plan

To carry out this program you will only need a device with an Internet connection because the theoretical part is developed 100% online. You will have the most updated therapeutic methods in terms of psychiatric syndromes, the most advanced holistic therapies, a complete program that will allow the professional to be updated in the area, together with the most experienced teachers.





“

*This program offers you the most complete curriculum for your update in only 12 months of study and 100% online”*

## Module 1. Psychiatry in the Different Stages of Life

- 1.1. Social and Personality Development
  - 1.1.1. Attachment
  - 1.1.2. Play
  - 1.1.3. Self-Esteem
  - 1.1.4. Treatment and Character
  - 1.1.5. Personality
- 1.2. Perinatal Psychiatry
  - 1.2.1. Intrauterine Development Fetus-Mother Interactions Effects of Stress
  - 1.2.2. Psychological Support
    - 1.2.2.1. In Assisted Reproduction
    - 1.2.2.2. In At-Risk Pregnancies
    - 1.2.2.3. In Prenatal Diagnosis
  - 1.2.3. Early Detection and Intervention
    - 1.2.3.1. Depression in Pregnancy: Mother and Child
    - 1.2.3.2. Secondary Effects of Medication and Drugs During the Prenatal Period
- 1.3. Psychiatry in Birth
  - 1.3.1. Psychological Support
    - 1.3.1.1. In the Preparation for Giving Birth
    - 1.3.1.2. In Premature Births
    - 1.3.1.3. In Traumatic Births
    - 1.3.1.4. In Perinatal Deaths: Mother or Child
  - 1.3.2. Early Detection and Intervention
    - 1.3.2.1. Baby Blues and Postpartum Despression: Mother and Child
    - 1.3.2.2. Postpartum Psychosis
- 1.4. The First 1000 Days
  - 1.4.1. Presentation of the Newborn
  - 1.4.2. Characteristics of Development from 2 Months to 3 Years Old
  - 1.4.3. The Role of Interaction With the Main Caregiver in the Development During the First Years of Life
  - 1.4.4. How to Assess These First Years
  - 1.4.5. Diagnostic Classification of Mental Health and of the Development Disorders
- 1.5. Pre-school Stage
  - 1.5.1. General Overview of the Clinical Interview
  - 1.5.2. Diagnostic Interview
  - 1.5.3. Characteristics of the Early Childhood Interview
- 1.6. School Stage
  - 1.6.1. Maturation of the Nervous System
  - 1.6.2. Motor Development
  - 1.6.3. Acquisition of Language
  - 1.6.4. Cognitive Development
  - 1.6.5. Feeding
  - 1.6.6. Sleep
  - 1.6.7. Self-concept
  - 1.6.8. Self-Esteem
  - 1.6.9. Morality
  - 1.6.10. Psychosexual Development
  - 1.6.11. Family and Age Development
  - 1.6.12. Influence of Peers During the Development at School Age
- 1.7. Puberty and Adolescence
  - 1.7.1. Physiological Changes
  - 1.7.2. Psychological Changes
  - 1.7.3. Neurobiological Changes
  - 1.7.4. Psychiatric Pathology in Adolescence
  - 1.7.5. Self-harm and Suicidal Behavior
  - 1.7.6. Transition in Medical Care
- 1.8. Young Adult (18-24 years old)
  - 1.8.1. Psychological Development in Young Adults
  - 1.8.2. Approach to Mental Disorders in Young Adults
- 1.9. Building a Family
  - 1.9.1. Formation and Elements of the Family
  - 1.9.2. Stages of the Family
  - 1.9.3. Family Functions
  - 1.9.4. Therapy



- 1.10. Specific Areas of Development
  - 1.10.1. Motor Development
  - 1.10.2. Social-emotional Development
  - 1.10.3. Cognitive Development
  - 1.10.4. Development of Attention, Perception and Memory
  - 1.10.5. Communication Development
  - 1.10.6. Language and Speaking Development
  - 1.10.7. Emotional Intelligence Development
  - 1.10.8. Identity Development
  - 1.10.9. Moral Development
  - 1.10.10. Psychosexual Development

## Module 2. Clinical Syndromes in Child and Adolescent Psychiatry

- 2.1. Diagnostic Taxonomies
  - 2.1.1. Definition
  - 2.1.2. Historical Introduction
  - 2.1.3. Current Classification Systems
- 2.2. Abuse and Addictions
  - 2.2.1. Alcohol and Drugs
  - 2.2.2. Behavioral Addictions
  - 2.2.3. Dual Pathologies
- 2.3. Eating Disorders
  - 2.3.1. Etiology
  - 2.3.2. Clinical Assessment
    - 2.3.2.1. Clinical Features in Anorexia Nervosa
    - 2.3.2.2. Clinical Features in Bulimia Nervosa
    - 2.3.2.3. Complementary Evaluations
  - 2.3.3. Diagnosis
  - 2.3.4. Treatment
    - 2.3.4.1. Nutritional Treatment
    - 2.3.4.2. Psychological Treatment
    - 2.3.4.3. Pharmacological Treatment
  - 2.3.5. Prevention
- 2.4. The Environment in Child Psychiatry
  - 2.4.1. School Bullying
  - 2.4.2. Adaptation Disorders
  - 2.4.3. Post-Traumatic Stress Disorder
  - 2.4.4. Treatment of PTSD
  - 2.4.5. Parental Alienation Syndrome
  - 2.4.6. Bonding Disorders
  - 2.4.7. Reactive Attachment Disorder
  - 2.4.8. Disinhibited Social Relationship Disorder
- 2.5. Mood Disorder
  - 2.5.1. Depression
  - 2.5.2. Grief
  - 2.5.3. Bipolar Disorder
- 2.6. Anxiety Disorder
  - 2.6.1. Childhood Fears and Simple Phobias
  - 2.6.2. Separation Anxiety Disorder
  - 2.6.3. Selective Mutism
  - 2.6.4. Generalized Anxiety Disorder
  - 2.6.5. Social Anxiety Disorder
  - 2.6.6. Panic Attacks and Panic Disorder
- 2.7. Autism and Social Community Disorder
  - 2.7.1. Autism Spectrum Disorder
  - 2.7.2. Social Communication Disorder (Pragmatic)
- 2.8. Cognition Disorder
  - 2.8.1. Borderline Intellectual Level
  - 2.8.2. Intellectual Disability
  - 2.8.3. Childhood Dementia

- 2.9. Basic Instincts
  - 2.9.1. Aggressiveness
    - 2.9.1.1. Self-Aggression
    - 2.9.1.2. Hetero-Aggressiveness
  - 2.9.2. Sphincters
    - 2.9.2.1. Encopresis
    - 2.9.2.2. Enuresis
  - 2.9.3. Sexuality
    - 2.9.3.1. Sexual Problems in Children and Adolescents
    - 2.9.3.2. Sexual Identity Disorder
    - 2.9.3.3. Atypical Psychosexual Development
  - 2.9.4. Sleep
    - 2.9.4.1. Parasomnia
    - 2.9.4.2. Dyssomnia
- 2.10. Psychotic Disorders
  - 2.10.1. Terms
  - 2.10.2. Epidemiology
  - 2.10.3. Etiology
  - 2.10.4. Clinical Symptoms
  - 2.10.5. Diagnostic Evaluation and Differential Diagnosis
  - 2.10.6. Treatment and Approach
  - 2.10.7. Course and Prognosis
- 2.11. Obsessive Compulsive Disorder
  - 2.11.1. Epidemiology
  - 2.11.2. Etiology
  - 2.11.3. Pathophysiology
  - 2.11.4. Manifestations and Clinical Course Clinical Differences with OCT in Adults
  - 2.11.5. Differential Diagnosis
  - 2.11.6. Comorbidity
  - 2.11.7. Treatment
- 2.12. Personality Disorders
  - 2.12.1. Prevalence of Personality Disorders in Children and Adolescents
  - 2.12.2. Clinical Manifestations
  - 2.12.3. Comorbidity and Prognosis
  - 2.12.4. Diagnosis
  - 2.12.5. Intervention and Treatment
- 2.13. Other Disorders
  - 2.13.1. Learning Disorders
  - 2.13.2. Speaking Disorder
  - 2.13.3. Language Disorder
  - 2.13.4. Reading Disorder
  - 2.13.5. Motor Disorders
  - 2.13.6. Other Non-Mental Disorders
- 2.14. Behavioral Disorders I. Tics, Tourette's and ADHD
  - 2.14.1. Tics
  - 2.14.2. Tourette's Syndrome
  - 2.14.3. Attention Deficit Hyperactivity Disorder (ADHD) in Children and Adolescents
- 2.15. Behavioral Disorders II. Disruptive, Impulsive or Antisocial Personality
  - 2.15.1. Epidemiology
  - 2.15.2. Etiology
  - 2.15.3. Disruptive Behavior Disorders
  - 2.15.4. Antisocial Personality Disorder
  - 2.15.5. Impulse Control Disorder
  - 2.15.6. Management

### Module 3. Psychopathology in Childhood

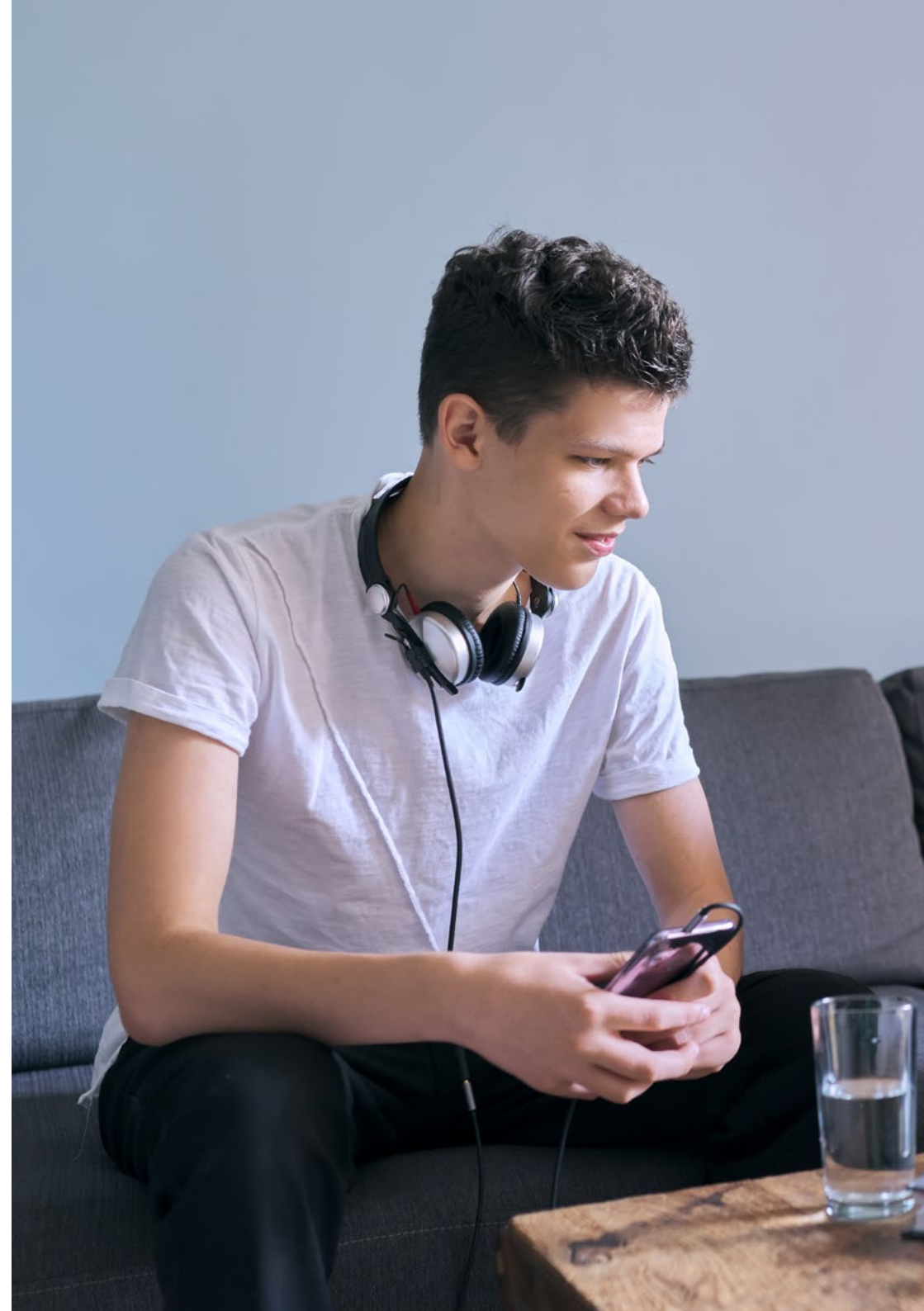
- 3.1. Perception Psychopathology
  - 3.1.1. Perceptive Function Disorders
  - 3.1.2. Perception Anomalies
  - 3.1.3. Hallucinations
  - 3.1.4. Pseudohallucinations
  - 3.1.5. Hallucinosis

- 3.2. Thought Disorders
  - 3.2.1. Magical Thinking and Logical Thinking
  - 3.2.2. Psychopathology
  - 3.2.3. Disorders of Thought Content
  - 3.2.4. Formal and Thought Control Disorders
- 3.3. Language Psychopathology
  - 3.3.1. Language Disorders
  - 3.3.2. Language Disorders in Childhood
  - 3.3.3. Communication Disorders According to thDSM-5 Classification
  - 3.3.4. Language Psychopathology in Childhood
  - 3.3.5. Acquired Aphasia with Epilepsy or Landau-Kleffner Syndrome
- 3.4. Psychopathology of Affectivity
  - 3.4.1. Affective Symptoms
  - 3.4.2. Psychopathology of Affectivity in Adolescence
  - 3.4.3. Syndromic Alterations of Affectivity
- 3.5. Psychopathology of Psychomotor Skills
  - 3.5.1. Increase in Psychomotor Activity
  - 3.5.2. Reduction in Psychomotor Activity
  - 3.5.3. Abnormalities of Mimic and Body Expression
- 3.6. Psychopathology of Sleep
  - 3.6.1. Physiology of Sleep
  - 3.6.2. Dyssomnia
  - 3.6.3. Parasomnia
- 3.7. Psychopathology of Intelligence
  - 3.7.1. Definition of Intelligence
  - 3.7.2. Psychopathology
    - 3.7.2.1. Intellectual Deficiency
    - 3.7.2.2. Development Disability
    - 3.7.2.3. Inhibitions or Blocks
- 3.8. Psychopathology of Nutritional Instincts
  - 3.8.1. Symptomatic Eating Disorders
  - 3.8.2. Primary Eating Disorders
- 3.9. Psychopathology of the Sex Life
  - 3.9.1. Psychosexual Development and Sex Life
  - 3.9.2. DSM-5 and its Classification of Sexuality Disorders
- 3.10. Psychopathology of Impulsiveness
  - 3.10.1. An Impulsive Child
  - 3.10.2. Approach to Impulsiveness
  - 3.10.3. Etiological Formulations: Biological, Psychological and Psychosocial Factors of Impulsiveness
  - 3.10.4. Impulsiveness as a Symptom for Other Child and Adolescent Disorders
  - 3.10.5. Changes in the Diagnostic and Statistical Manual DMS-5
  - 3.10.6. Approach and Treatment
- 3.11. Psychopathology of Insight
  - 3.11.1. Models and Dimensions of Insight
  - 3.11.2. Insight in Mental Disorders
- 3.12. Psychopathology of Conscience and Attention
  - 3.12.1. Psychopathology of Conscience
  - 3.12.2. Quantitative Alterations
  - 3.12.3. Qualitative Alterations
  - 3.12.4. Psychopathology of Attention
- 3.13. Psychopathology of Memory
  - 3.13.1. Basic Psychopathological Concepts
- 3.14. Psychopathology of Aggression
  - 3.14.1. Classification
  - 3.14.2. Theories
  - 3.14.3. Evolutionary Development of Aggression
  - 3.14.4. Aggression Modulators

#### Module 4. New Advances in Childhood Psychiatry

- 4.1. Epidemiology of Mental Disorders in Childhood and Adolescence
  - 4.1.1. Uses and Limitations of Epidemiological Studies
  - 4.1.2. Measurements of the Frequency of Illnesses
  - 4.1.3. Types of Epidemiological Studies
  - 4.1.4. Prevalence of Mental Disorders in Childhood and Adolescence The Question of the Classification Systems of Illnesses
  - 4.1.5. Comorbidity
  - 4.1.6. Continuity in Adulthood

- 4.2. Genetic Advances in Childhood Psychiatry
  - 4.2.1. Approach to Molecular Genetics
  - 4.2.2. From Genetics to Symptomology
  - 4.2.3. Future of Genetics in Child and Adolescent Psychiatric Research
- 4.3. Update on Neurochemistry in Psychiatry
  - 4.3.1. Neurobiology of Development: Genetic Implication
  - 4.3.2. Neurochemistry of Early Development
  - 4.3.3. Neurochemistry of Learning
  - 4.3.4. Neurochemistry of the Reward System
  - 4.3.5. Neurochemistry in Aggression
- 4.4. Clinical Psychophysiology and Neurophysiology: Application in Practice
  - 4.4.1. Videoelectroencephalography (VEEG)
  - 4.4.2. Normal Sleep in Childhood and Adolescence
  - 4.4.3. Nocturnal Video-Polysomnography (VPSG)
  - 4.4.4. Cognitive Evoked Potentials (CEP)
- 4.5. Scientific Research in Psychiatry
  - 4.5.1. Epidemiology: Basic Concepts
  - 4.5.2. Bioethics of Clinical Research and of the Professional/Patient Relationship
  - 4.5.3. Evidence-Based Medicine
  - 4.5.4. Objectives of the Research: How to Formulate Research Questions and Search Strategies
  - 4.5.5. Phases of a Research Project Definition of Variable, Design and Type of Study
  - 4.5.6. Study Population: Sample Size and Sample Selection
  - 4.5.7. Analysis and Management of Data
- 4.6. Efficient Communication and Leadership in Psychiatry
  - 4.6.1. Common Aspects
  - 4.6.2. Written Texts
  - 4.6.3. Oral Reports





## Module 5. Liaison and Interconsultation Psychiatry: Psychosomatic Pedopsychiatry

- 5.1. Chronic Pediatric Illness
  - 5.1.1. Psychological Impact
  - 5.1.2. Related Factors
  - 5.1.3. Therapeutic Intervention
- 5.2. The Child and the Family in the Face of Illness and Death
  - 5.2.1. The Child and the Family in the Face of Illness and Hospitalization
  - 5.2.2. The Child and the Family in the Face of Death
- 5.3. Psychosomatic Paidopsychiatry in Pediatric Oncohematology
  - 5.3.1. Psychopathological Alterations in Children With Cancer
  - 5.3.2. Diagnosis
  - 5.3.3. Treatment
- 5.4. Psychosomatic Paidopsychiatry in Pediatric Endocrinology
  - 5.4.1. Obesity
  - 5.4.2. Diabetes
- 5.5. Psychosomatic Paidopsychiatry in Pediatric Nephrology
  - 5.5.1. Chronic Kidney Disease: Concept and Most Common Causes
  - 5.5.2. Psychiatric Disorders Associated with CKD in Children and Adolescents
  - 5.5.3. Renal Transplant
- 5.6. Psychosomatic Paidopsychiatry in Neurology
  - 5.6.1. Headaches
  - 5.6.2. Epilepsy
- 5.7. Psychosomatic Paidopsychiatry in Pediatric Cardiology
  - 5.7.1. Psychosocial Problems
  - 5.7.2. Psychiatric Disorders in Congenital Heart Disease
- 5.8. Psychosomatic Paidopsychiatry in Children and Adolescents: Burns Victims
  - 5.8.1. Psychosocial Adjustment
  - 5.8.2. Therapeutic Considerations
- 5.9. Psychosomatic Paidopsychiatry of Children in the ICU
  - 5.9.1. Types of Pediatric Intensive Care Units
  - 5.9.2. Psychopathology
  - 5.9.3. Treatment and Interventions

- 5.10. Delirium
  - 5.10.1. Epidemiology
  - 5.10.2. Etiology
  - 5.10.3. Neuropathogenesis
  - 5.10.4. Clinical Manifestations
  - 5.10.5. Diagnosis
  - 5.10.6. Treatment
- 5.11. Suicidal Behavior from the Interconsultation Point of View
  - 5.11.1. Concept of Death and Illness in Children and Adolescents
  - 5.11.2. Concept of Suicide
  - 5.11.3. Characteristics of the Interconsultation of Suicidal Behavior
  - 5.11.4. Assessment
  - 5.11.5. Therapeutic Approach
  - 5.11.6. Absolute Indicators of Admission (or Maintaining Admission)
- 5.12. Intervention and Pain Management and Preparation of Invasive Interventions in Children and Adolescents
  - 5.12.1. Psychological Intervention for the Preparation of Invasive Interventions
  - 5.12.2. Relaxation Technique
- 5.13. Psychosomatic Paidopsychiatry
  - 5.13.1. Special Characteristics for Psychosomatic Paidopsychiatry
  - 5.13.2. Psychosomatic Paidopsychiatry
  - 5.13.3. Interconsultation Times in Psychosomatic Paidopsychiatry
  - 5.13.4. Most Frequent Problems and Pathologies
- 5.14. Psychopharmacology in the Interconsultation
  - 5.14.1. Pediatric Psychopharmacology or Development First Principles
  - 5.14.2. Psychpharmacology in Pediatric Illnesses
- 5.15. Psychosomatic Paidopsychiatry in Pediatric Gastroenterology
  - 5.15.1. Repetitive Abdominal Pain
  - 5.15.2. Chronic Inflammatory Bowel Disease
  - 5.15.3. Ulcerative Colitis
  - 5.15.4. Celiac Disease
- 5.16. Psychosomatic Paedopsychiatry in Pediatric Pneumology
  - 5.16.1. Asthma
  - 5.16.2. Cystic Fibrosis

## Module 6. Advances in Treatments in Child and Adolescent Psychiatry

- 6.1. Environmental Treatments
  - 6.1.1. Third Generation Therapies
- 6.2. Behavioral Treatment
  - 6.2.1. Cognitive Behavioral Therapy
  - 6.2.2. Parent Training
  - 6.2.3. Family Therapy (Systemic)
  - 6.2.4. Individual Psychotherapy
  - 6.2.5. Group Psychotherapy
- 6.3. Psychoanalysis
  - 6.3.1. Psychoanalytical Technique
  - 6.3.2. Indications of Psychoanalysis
  - 6.3.3. Results of Psychoanalysis
  - 6.3.4. Psychoanalytical Psychotherapy
- 6.4. Pharmacological Treatment. Dose and Application
  - 6.4.1. Mechanisms of Action for Drugs
  - 6.4.2. Precautions, Warnings and Informed Consent
- 6.5. Surgical Treatments
  - 6.5.1. Sex Reassignment Surgery (SRS)
  - 6.5.2. Neurosurgery
- 6.6. Technological Treatment EBM Recommendations
  - 6.6.1. Technological Treatment
  - 6.6.2. EBM Therapeutic Recommendations

## Module 7. Child and Adolescent Psychiatric Emergencies

- 7.1. Emergency Diagnosis and Urgent Report
  - 7.1.1. Definition and Epidemiology of Psychiatric Emergencies
  - 7.1.2. Evaluation of Emergencies
  - 7.1.3. Differential Diagnosis and Psychomotor Agitation
- 7.2. Anxiety Syndrome
  - 7.2.1. Anxiety Disorders
  - 7.2.2. Anxiety Syndrome in Emergencies

- 7.3. Non-Suicidal Self-Harm
  - 7.3.1. Risk Factors
  - 7.3.2. Explanatory Models
  - 7.3.3. How to Act from a Pediatric Emergency Department
  - 7.3.4. Current Treatments
- 7.4. Approach to Suicidal Behaviour from Pediatric Emergency Departments
  - 7.4.1. Risk Factors and Protection
  - 7.4.2. Explanatory Models
  - 7.4.3. How to Act from a Pediatric Emergency Department
  - 7.4.4. Current Psychological Treatment
- 7.5. Motor Agitations
  - 7.5.1. Patient Evaluation
  - 7.5.2. Etiology and Diagnosis
  - 7.5.3. Approach and Treatment
- 7.6. Psychotic Picture
  - 7.6.1. Epidemiology
  - 7.6.2. Etiology
  - 7.6.3. Clinical Symptoms
  - 7.6.4. Diagnostic Evaluation and Differential Diagnosis
  - 7.6.5. Treatment and Approach
  - 7.6.6. Course and Prognosis
- 7.7. Substance Abuse Problems
  - 7.7.1. Etiology and Epidemiology
  - 7.7.2. Types of Substances
  - 7.7.3. Clinical Symptoms
  - 7.7.4. Differential Diagnosis
  - 7.7.5. Treatment
- 7.8. Family Conflicts
  - 7.8.1. Physical Space and First Contact
  - 7.8.2. Family Conflict and Lawsuit
  - 7.8.3. Family Structure and Configuration
  - 7.8.4. Life Cycle
  - 7.8.5. Elaboration of a Diagnostic Hypothesis on the Family Conflict
  - 7.8.6. Family Interventions

- 7.9. Bullying
  - 7.9.1. Detection
  - 7.9.2. Intervention
  - 7.9.3. Prevention
  - 7.9.4. Final Reflections
- 7.10. Sexual Abuse
  - 7.10.1. Types of Child Maltreatment
  - 7.10.2. Classification of Child Sexual Abuse
  - 7.10.3. Characteristics of Child Sexual Abuse
  - 7.10.4. Evaluation of a Possible Case of Child Sexual Abuse

## Module 8. Professional Skills in Child Psychiatry

- 8.1. The Clinical Interview
  - 8.1.1. Types of Interviews
  - 8.1.2. Parent Interview
  - 8.1.3. Interview and Examination Elements in Children
  - 8.1.4. Child Play and Drawing
  - 8.1.5. Adolescent Interview
  - 8.1.6. Interview of Other Adults
- 8.2. Child Examination
  - 8.2.1. Physical Examination
    - 8.2.1.1. Physical Examination
    - 8.2.1.2. Medical Examination
    - 8.2.1.3. Significance of Lesser Neurological Symptoms
    - 8.2.1.4. Neuroimaging Studies in Child and Adolescent Psychiatry
  - 8.2.2. Psychological/Mental Health Examination
    - 8.2.2.1. Cognitive Examination
    - 8.2.2.2. Emotional Examination
    - 8.2.2.3. Social Examination
    - 8.2.2.4. Instrumental Examination
    - 8.2.2.5. Interpretive Instruments
  - 8.2.3. Psychopathological Examination

- 8.3. Neuroimaging and Other Complementary Studies
  - 8.3.1. Magnetic Resonance
  - 8.3.2. Neuroimaging Techniques Using Radiotracers PET/SPECT
- 8.4. The Diagnostic Process and Reasoning
  - 8.4.1. Diagnostic Evaluation What and Why?
  - 8.4.2. Functional Analysis of Behavior

## Module 9. Clinical Management in Psychiatry

- 9.1. General Principles, Guidelines, Plans and Programs Reference Models
  - 9.1.1. Principles and Reference Guidelines for Caring for Minors with Psychic Problems
  - 9.1.2. Plans and Programs on Mental Health of Children and Adolescents
  - 9.1.3. Reference Models
- 9.2. Recipients, Service Portfolio, Health Care Network and Health Care Processes
  - 9.2.1. Recipients
  - 9.2.2. Portfolio of Services
  - 9.2.3. Health Care Network
  - 9.2.4. Health Care Processes
- 9.3. Professional Teams and Profiles, Coordination, Management Tools and Indicators
  - 9.3.1. Professional Teams and Professional Profiles
  - 9.3.2. Coordination
  - 9.3.3. Management Tools
  - 9.3.4. Indicators







## Module 10. Community Intervention in Childhood Psychiatry

- 10.1. School
  - 10.1.1. Attention to Diversity
  - 10.1.2. Characteristics and Strategies for Care of Different Mental Disorders in the School Environment
- 10.2. Social Services
  - 10.2.1. Early Care
  - 10.2.2. High Risk Families
  - 10.2.3. Interventions in Multi-problematic Families
  - 10.2.4. Maltreatment and Neglect
  - 10.2.5. Boarding and Lodging
  - 10.2.6. Adoption
- 10.3. Medical-Legal Aspects of Childhood Psychiatry
  - 10.3.1. Legal Aspects in Clinical Practice
  - 10.3.2. Divorce, Separation and New Forms of Cohabiting
  - 10.3.3. Psychiatric Hospitalization of Children and Adolescents
  - 10.3.4. Mental Health in the Juvenile Justice System
  - 10.3.5. Bad Practice (Iatrogenic) and Professional Liability
  - 10.3.6. Testifying in a Court of Law
- 10.4. Mental Health in Adults
  - 10.4.1. Transition Between Services
  - 10.4.2. First Psychotic Episodes
  - 10.4.3. ADHD and Autism After 18 Years of Age

07

# Clinical Internship

After having completed the 100% online study plan of the theoretical part developed in a very complete material deployed in various multimedia resources, you will continue in the 100% practical training, where you will incorporate in your clinical practice the most updated psychiatric treatments in minor patients, in a real context and with the most advanced resources.





“

*You will get to know new spaces where you will develop your knowledge in a specialized way and with great experts”*

This intensive 3-week internship consists of the application of all that has been learned in a real context, which will provide the professional with a first class academic experience. During 8-hour days from Monday to Friday, consecutively with an adjunct tutor who will serve as support throughout the process will apply the procedures and interventions in both diagnostic consultation and psychiatric emergencies that arise.

Among the different activities that the professional will perform, the use of advanced clinical diagnostic methods in the different psychopathological processes, the realization of Videoelectroencephalography, in the practice of clinical Neurophysiology stand out. It will also include third generation therapies, systemic family therapy, cognitive behavioral therapy in the clinical consultation of minor patients with psychiatric syndromes, among other treatments.

The practical teaching will be carried out with the accompaniment and guidance of the professors and other fellow students who will facilitate teamwork and multidisciplinary integration as transversal competencies for medical practice (learning to be and learning to relate).

The procedures described below will be the basis of the specialization, and their realization will be subject to the center's own availability, its usual activity and workload, the proposed activities being the following:





Module	Practical Activity
<b>Approach to Clinical Syndromes in Child and Adolescent Psychiatry</b>	Use advanced clinical diagnostic methods in the different psychopathological processes
	Make a differential diagnosis taking into account the patient's developmental stage
	Perform a sychodiagnostics sequence in childhood and adolescence
	Manage the different multiaxial systems of classification of mental disorders in childhood and adolescence
<b>Advances in Treatments in Child and Adolescent Psychiatry</b>	Incorporate molecular genetics to symptoms in child psychiatry
	Apply Videoelectroencephalography (VEEG) in the practice of clinical neurophysiology
	Include third generation therapies, systemic family therapy, cognitive behavioral therapy in the clinical consultation of minor patients with psychiatric syndromes
	Include the child's play and drawing in the diagnostic consultation
<b>Clinical Management in Psychiatry</b>	Perform the clinical diagnostic interview to the patient in school stage
	Perform clinical evaluation in a patient with eating disorder
	Perform diagnostic evaluation and differential diagnosis in patients with psychotic disorders
	Generate oral and written reports after the diagnostic evaluation of the minor patient
	Make appropriate therapeutic recommendations for each case presented in consultation
<b>Child and Adolescent Psychiatric Emergencies</b>	Approach the patient with panic attack and panic disorder
	Perform the therapeutic approach in patients with suicidal behavior from interconsultation
	Apply relaxation techniques in pain management and preparation for invasive interventions in children and adolescents
	Indicate pharmacological treatment with its corresponding dosage and application to the patient

## Civil Liability Insurance

This institution's main concern is to guarantee the safety of the students and other collaborating agents involved in the internship process at the company. Among the measures dedicated to achieve this is the response to any incident that may occur during the entire teaching-learning process.

To this end, this entity commits to purchasing a civil liability insurance policy to cover any eventuality that may arise during the course of the internship at the center.

This liability policy for interns will have broad coverage and will be taken out prior to the start of the Internship Program period. That way professionals will not have to worry in case of having to face an unexpected situation and will be covered until the end of the internship program at the center.



## General Conditions of the Internship Program

The general terms and conditions of the internship agreement for the program are as follows:

**1. TUTOR:** During the Hybrid Master's Degree, students will be assigned with two tutors who will accompany them throughout the process, answering any doubts and questions that may arise. On the one hand, there will be a professional tutor belonging to the internship center who will have the purpose of guiding and supporting the student at all times. On the other hand, they will also be assigned with an academic tutor whose mission will be to coordinate and help the students during the whole process, solving doubts and facilitating everything they may need. In this way, the student will be accompanied and will be able to discuss any doubts that may arise, both clinical and academic.

**2. DURATION:** The internship program will have a duration of three continuous weeks, in 8-hour days, 5 days a week. The days of attendance and the schedule will be the responsibility of the center and the professional will be informed well in advance so that they can make the appropriate arrangements.

**3. ABSENCE:** If the students does not show up on the start date of the Hybrid Master's Degree, they will lose the right to it, without the possibility of reimbursement or change of dates. Absence for more than two days from the internship, without justification or a medical reason, will result in the professional's withdrawal from the internship, therefore, automatic termination of the internship. Any problems that may arise during the course of the internship must be urgently reported to the academic tutor.

**4. CERTIFICATION:** Professionals who pass the Hybrid Master's Degree will receive a certificate accrediting their stay at the center.

**5. EMPLOYMENT RELATIONSHIP:** the Hybrid Master's Degree shall not constitute an employment relationship of any kind.

**6. PRIOR EDUCATION:** Some centers may require a certificate of prior education for the Hybrid Master's Degree. In these cases, it will be necessary to submit it to the TECH internship department so that the assignment of the chosen center can be confirmed.

**7. DOES NOT INCLUDE:** The Hybrid Master's Degree will not include any element not described in the present conditions. Therefore, it does not include accommodation, transportation to the city where the internship takes place, visas or any other items not listed.

However, students may consult with their academic tutor for any questions or recommendations in this regard. The academic tutor will provide the student with all the necessary information to facilitate the procedures in any case.

# 08

## Where Can I Do the Clinical Internship?

TECH has created this innovative program with divergent study methods that provide the professional with the best way to learn by doing. After developing and passing the syllabus 100% online, you will go on to an Internship Program that will allow you to enjoy an intensive stay in a clinical center of wide reference in the approach of updated therapeutics in minor patients, in different parts of the world. Undoubtedly, a unique opportunity that only TECH could offer you.







“

*Develop your full potential in an avant-garde space and bring new therapeutic solutions to your patients with this 100% practical program”*



The student will be able to complete the practical part of this Hybrid Master's Degree at the following centers:



Medicine

### Hospital HM Modelo

Country	City
Spain	La Coruña

Address: Rúa Virrey Osorio, 30, 15011, A Coruña

Network of private clinics, hospitals and specialized centers distributed throughout Spain.

**Related internship programs:**

- Anaesthesiology and Resuscitation
- Spine Surgery



Medicine

### Hospital Maternidad HM Belén

Country	City
Spain	La Coruña

Address: R. Filantropía, 3, 15011, A Coruña

Network of private clinics, hospitals and specialized centers distributed throughout Spain.

**Related internship programs:**

- Update in Assisted Reproduction
- Hospitals and Health Services Management



Medicine

### Hospital HM Rosaleda

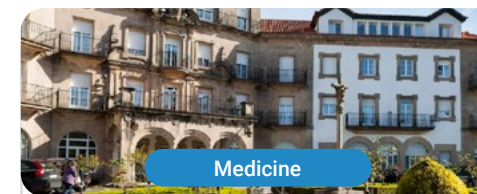
Country	City
Spain	La Coruña

Address: Rúa de Santiago León de Caracas, 1, 15701, Santiago de Compostela, A Coruña

Network of private clinics, hospitals and specialized centers distributed throughout Spain.

**Related internship programs:**

- Hair Transplantation
- Orthodontics and Dentofacial Orthopedics



Medicine

### Hospital HM La Esperanza

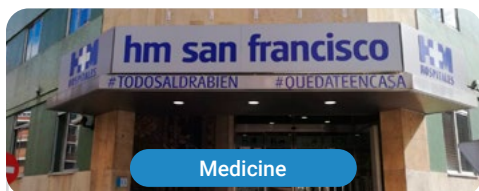
Country	City
Spain	La Coruña

Address: Av. das Burgas, 2, 15705, Santiago de Compostela, A Coruña

Network of private clinics, hospitals and specialized centers distributed throughout Spain.

**Related internship programs:**

- Oncology Nursing
- Clinical Ophthalmology



Medicine

### Hospital HM San Francisco

Country	City
Spain	León

Address: C. Marqueses de San Isidro, 11, 24004, León

Network of private clinics, hospitals and specialized centers distributed throughout Spain.

**Related internship programs:**

- Update in Anesthesiology and Resuscitation
- Nursing in the Traumatology Department



Medicine

### Hospital HM Regla

Country	City
Spain	León

Address: Calle Cardenal Landázuri, 2, 24003, León

Network of private clinics, hospitals and specialized centers distributed throughout Spain.

**Related internship programs:**

- Psychiatric Treatments Update in Minor Patients



Medicine

### Hospital HM Nou Delfos

Country	City
Spain	Barcelona

Address: Avinguda de Vallcarca, 151, 08023, Barcelona

Network of private clinics, hospitals and specialized centers distributed throughout Spain.

**Related internship programs:**

- Aesthetic Medicine
- Clinical Nutrition in Medicine



Medicine

### Hospital HM Madrid

Country	City
Spain	Madrid

Address: Pl. del Conde del Valle de Súchil, 16, 28015, Madrid

Network of private clinics, hospitals and specialized centers distributed throughout Spain.

**Related internship programs:**

- Clinical Analysis
- Anaesthesiology and Resuscitation



Medicine

### Hospital HM Montepríncipe

Country	City
Spain	Madrid

Address: Av. de Montepríncipe, 25, 28660, Boadilla del Monte, Madrid

Network of private clinics, hospitals and specialized centers distributed throughout Spain.

**Related internship programs:**

- Child Orthopedics
- Aesthetic Medicine



Medicine

### Hospital HM Torrelodones

Country	City
Spain	Madrid

Address: Av. Castillo Olivares, s/n, 28250, Torrelodones, Madrid

Network of private clinics, hospitals and specialized centers distributed throughout Spain.

**Related internship programs:**

- Anaesthesiology and Resuscitation
- Hospital Pediatrics



Medicine

### Hospital HM Sanchinarro

Country	City
Spain	Madrid

Address: Calle de Oña, 10, 28050, Madrid

Network of private clinics, hospitals and specialized centers distributed throughout Spain.

**Related internship programs:**

- Anaesthesiology and Resuscitation
- Sleep Medicine



Medicine

### Hospital HM Nuevo Belén

Country	City
Spain	Madrid

Address: Calle José Silva, 7, 28043, Madrid

Network of private clinics, hospitals and specialized centers distributed throughout Spain.

**Related internship programs:**

- General and Digestive System Surgery
- Clinical Nutrition in Medicine



Medicine

### Hospital HM Puerta del Sur

Country City  
Spain Madrid

Address: Av. Carlos V, 70, 28938,  
Móstoles, Madrid

Network of private clinics, hospitals and specialized centers distributed throughout Spain.

**Related internship programs:**

- Pediatric Emergencies
- Clinical Ophthalmology



Medicine

### Policlínico HM La Paloma

Country City  
Spain Madrid

Address: Calle Hilados, 9, 28850,  
Torrejón de Ardoz, Madrid

Network of private clinics, hospitals and specialized centers distributed throughout Spain.

**Related internship programs:**

- Advanced Operating Room Nursing
- Orthodontics and Dentofacial Orthopedics





Medicine

### Policlínico HM Sanchinarro

Country	City
Spain	Madrid

Address: Av. de Manoteras, 10,  
28050, Madrid

Network of private clinics, hospitals and specialized centers distributed throughout Spain.

**Related internship programs:**

- Gynecological Care for Midwives
- Nursing in the Digestive Tract Department



Medicine

### Policlínico HM Virgen del Val

Country	City
Spain	Madrid

Address: Calle de Zaragoza, 6, 28804,  
Alcalá de Henares, Madrid

Network of private clinics, hospitals and specialized centers distributed throughout Spain.

**Related internship programs:**

- Diagnosis in Physiotherapy
- Physiotherapy in Early Care

09

# Methodology

This academic program offers students a different way of learning. Our methodology uses a cyclical learning approach: **Relearning**.

This teaching system is used, for example, in the most prestigious medical schools in the world, and major publications such as the **New England Journal of Medicine** have considered it to be one of the most effective.



“

*Discover Relearning, a system that abandons conventional linear learning, to take you through cyclical teaching systems: a way of learning that has proven to be extremely effective, especially in subjects that require memorization"*

### Case Study to contextualize all content

Our program offers a revolutionary approach to developing skills and knowledge. Our goal is to strengthen skills in a changing, competitive, and highly demanding environment.



*At TECH, you will experience a learning methodology that is shaking the foundations of traditional universities around the world"*



*You will have access to a learning system based on repetition, with natural and progressive teaching throughout the entire syllabus.*





### A learning method that is different and innovative

This TECH program is an intensive educational program, created from scratch, which presents the most demanding challenges and decisions in this field, both nationally and internationally. This methodology promotes personal and professional growth, representing a significant step towards success. The case method, a technique that lays the foundation for this content, ensures that the most current economic, social and professional reality is taken into account.

“*Our program prepares you to face new challenges in uncertain environments and achieve success in your career*”

*The student will learn to solve complex situations in real business environments through collaborative activities and real cases.*

The case method is the most widely used learning system in the best faculties in the world. The case method was developed in 1912 so that law students would not only learn the law based on theoretical content. It consisted of presenting students with real-life, complex situations for them to make informed decisions and value judgments on how to resolve them. In 1924, Harvard adopted it as a standard teaching method.

What should a professional do in a given situation? This is the question we face in the case method, an action-oriented learning method. Throughout the program, the studies will be presented with multiple real cases. They will have to combine all their knowledge and research, and argue and defend their ideas and decisions.

## Relearning Methodology

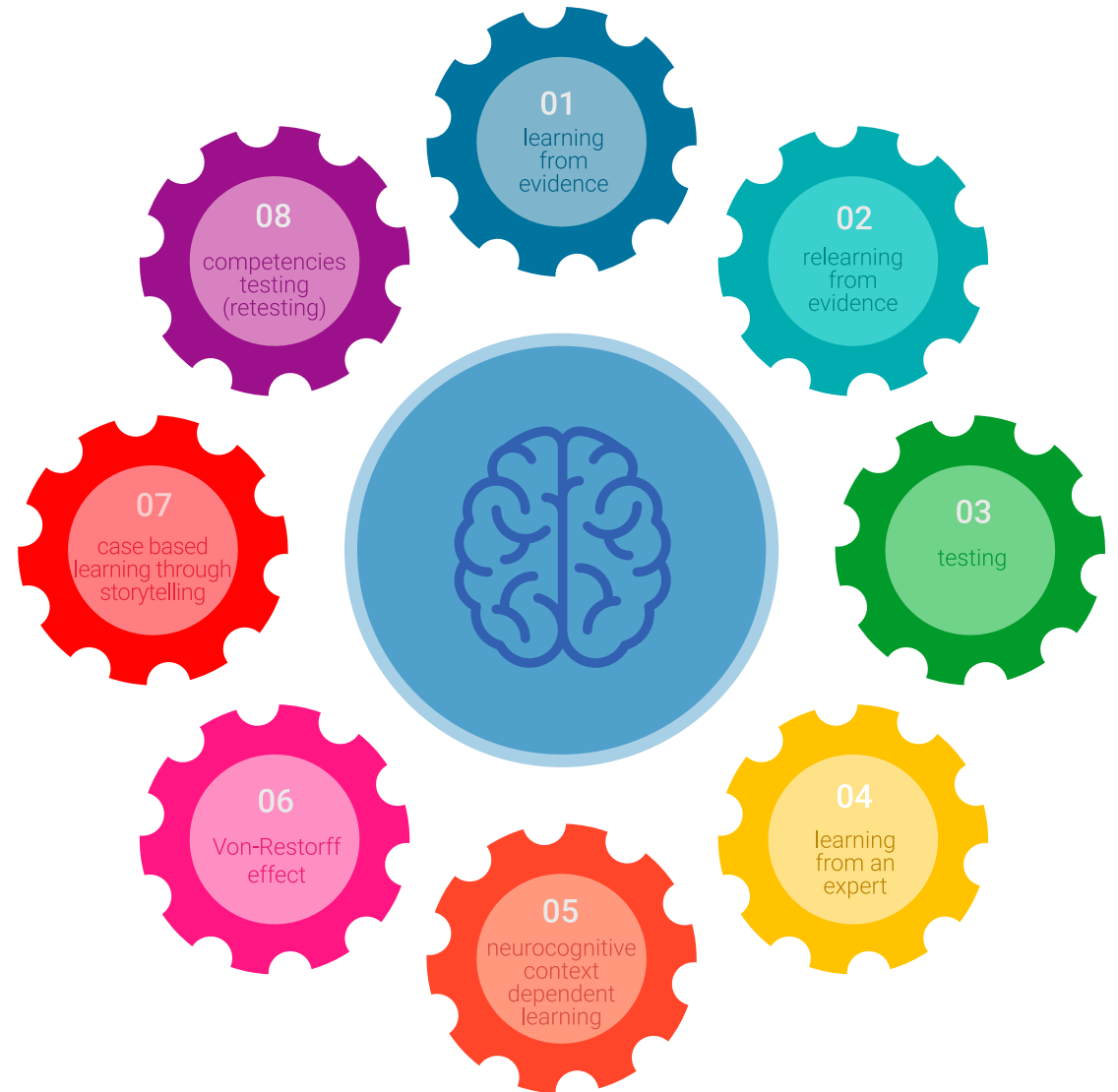
TECH effectively combines the Case Study methodology with a 100% online learning system based on repetition, which combines 8 different teaching elements in each lesson.

We enhance the Case Study with the best 100% online teaching method: Relearning.

*In 2019, we obtained the best learning results of all online universities in the world.*

At TECH, you will learn using a cutting-edge methodology designed to train the executives of the future. This method, at the forefront of international teaching, is called Relearning.

Our university is the only one in the world authorized to employ this successful method. In 2019, we managed to improve our students' overall satisfaction levels (teaching quality, quality of materials, course structure, objectives...) based on the best online university indicators.



In our program, learning is not a linear process, but rather a spiral (learn, unlearn, forget, and re-learn). Therefore, we combine each of these elements concentrically.

With this methodology, we have trained more than 650,000 university graduates with unprecedented success in fields as diverse as biochemistry, genetics, surgery, international law, management skills, sports science, philosophy, law, engineering, journalism, history, markets, and financial instruments. All this in a highly demanding environment, where the students have a strong socio-economic profile and an average age of 43.5 years.

*Relearning will allow you to learn with less effort and better performance, involving you more in your training, developing a critical mindset, defending arguments, and contrasting opinions: a direct equation for success.*

From the latest scientific evidence in the field of neuroscience, not only do we know how to organize information, ideas, images and memories, but we know that the place and context where we have learned something is fundamental for us to be able to remember it and store it in the hippocampus, to retain it in our long-term memory.

In this way, and in what is called neurocognitive context-dependent e-learning, the different elements in our program are connected to the context where the individual carries out their professional activity.



This program offers the best educational material, prepared with professionals in mind:



#### Study Material

All teaching material is produced by the specialists who teach the course, specifically for the course, so that the teaching content is highly specific and precise.

These contents are then applied to the audiovisual format, to create the TECH online working method. All this, with the latest techniques that offer high quality pieces in each and every one of the materials that are made available to the student.



#### Classes

There is scientific evidence suggesting that observing third-party experts can be useful.

Learning from an Expert strengthens knowledge and memory, and generates confidence in future difficult decisions.



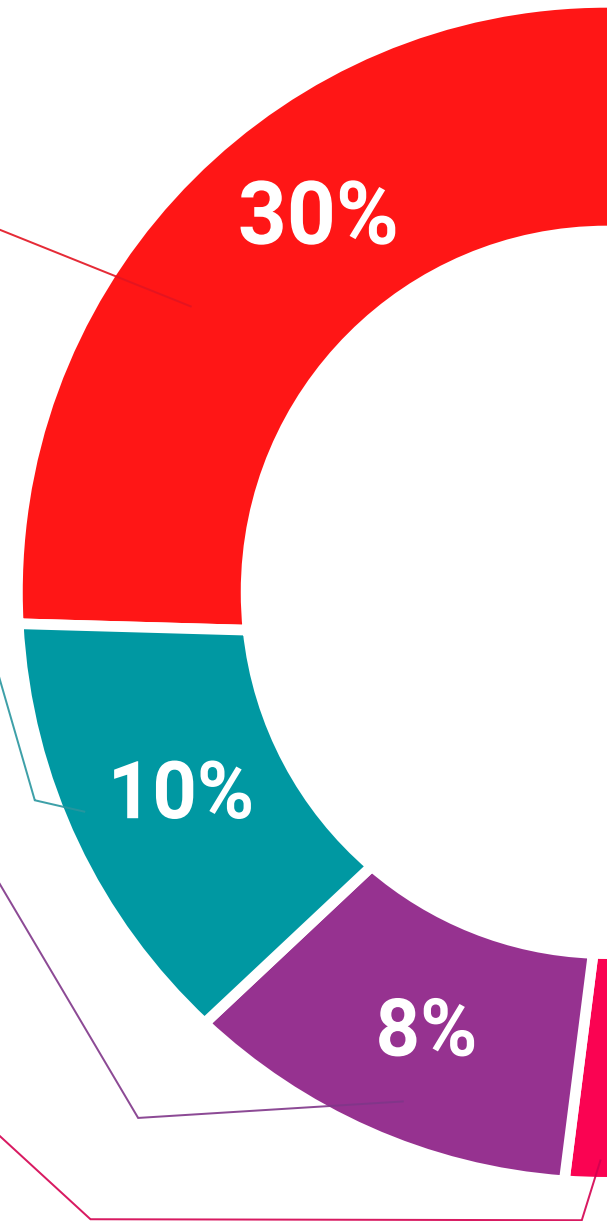
#### Practising Skills and Abilities

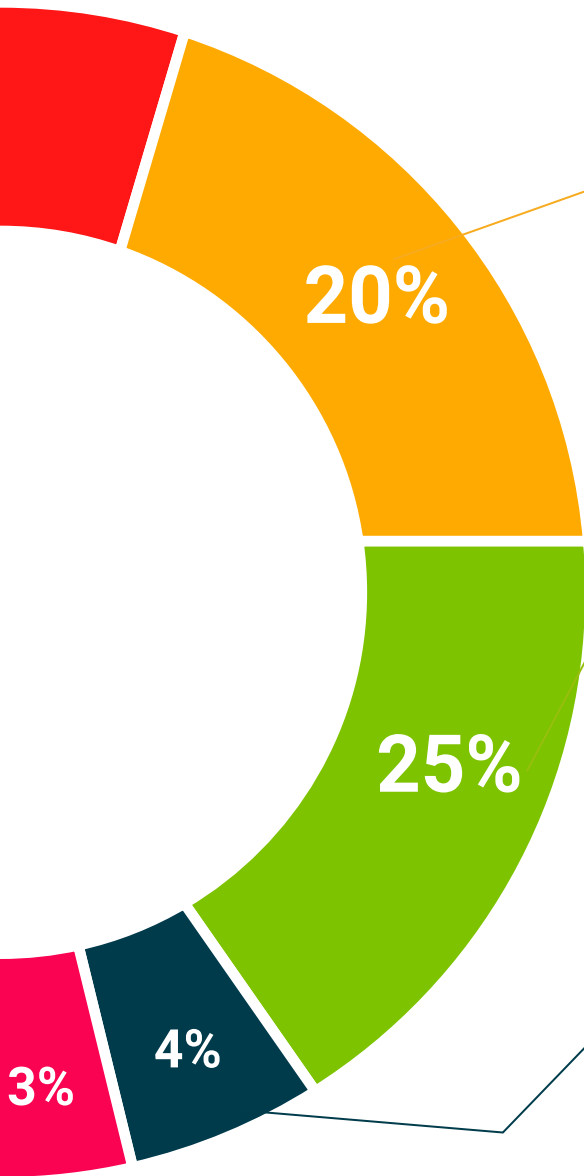
They will carry out activities to develop specific competencies and skills in each thematic area. Exercises and activities to acquire and develop the skills and abilities that a specialist needs to develop in the context of the globalization that we are experiencing.



#### Additional Reading

Recent articles, consensus documents and international guidelines, among others. In TECH's virtual library, students will have access to everything they need to complete their course.





#### Case Studies

Students will complete a selection of the best case studies chosen specifically for this situation. Cases that are presented, analyzed, and supervised by the best specialists in the world.



#### Interactive Summaries

The TECH team presents the contents attractively and dynamically in multimedia lessons that include audio, videos, images, diagrams, and concept maps in order to reinforce knowledge.

This exclusive educational system for presenting multimedia content was awarded by Microsoft as a "European Success Story".



#### Testing & Retesting

We periodically evaluate and re-evaluate students' knowledge throughout the program, through assessment and self-assessment activities and exercises, so that they can see how they are achieving their goals.



# 10 Certificate

The Hybrid Master's Degree in Update on Psychiatric Treatments in Child and Adolescent Patients guarantees you, in addition to the most rigorous and up-to-date education, access to a Hybrid Master's Degree issued by TECH Global University.



“

*Successfully complete this program and receive your university qualification without having to travel or fill out laborious paperwork”*

This private qualification will allow you to obtain a **Hybrid Master's Degree in Update on Psychiatric Treatments in Child and Adolescent Patients** endorsed by **TECH Global University**, the world's largest online university.

**TECH Global University** is an official European University publicly recognized by the Government of Andorra ([official bulletin](#)). Andorra is part of the European Higher Education Area (EHEA) since 2003. The EHEA is an initiative promoted by the European Union that aims to organize the international training framework and harmonize the higher education systems of the member countries of this space. The project promotes common values, the implementation of collaborative tools and strengthening its quality assurance mechanisms to enhance collaboration and mobility among students, researchers and academics.

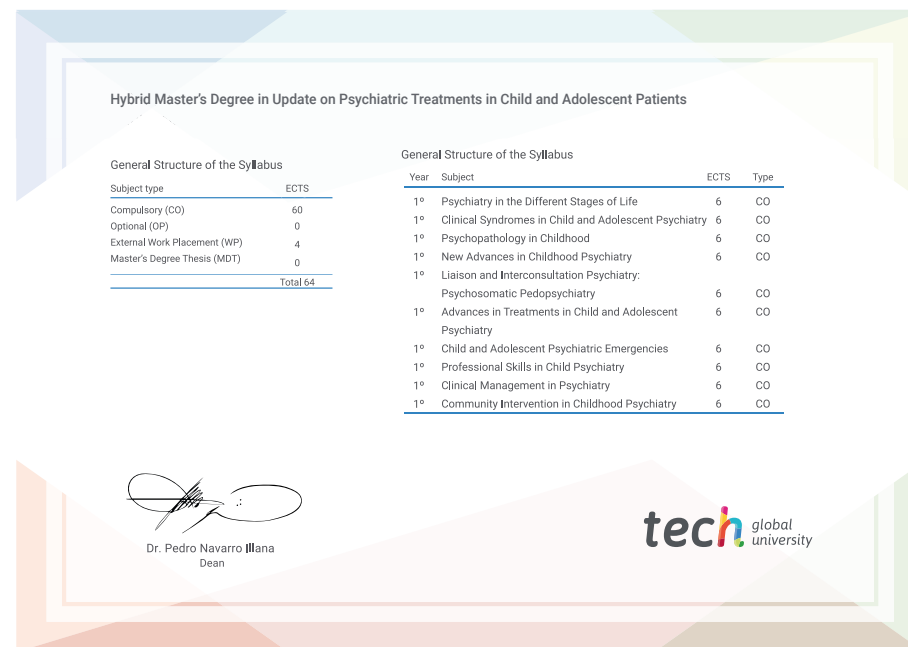
This **TECH Global University** private qualification is a European program of continuing education and professional updating that guarantees the acquisition of competencies in its area of knowledge, providing a high curricular value to the student who completes the program.

Title: **Hybrid Master's Degree in Update on Psychiatric Treatments in Child and Adolescent Patients**

Modality: **Hybrid (Online + Clinical Internship)**

Duration: **12 months**

Accreditation: **60 + 4 ECTS**



\*Apostille Convention. In the event that the student wishes to have their paper diploma issued with an apostille, TECH Global University will make the necessary arrangements to obtain it, at an additional cost.



future  
health confidence people  
education information tutors  
guarantee accreditation teaching  
institutions technology learning  
community commitment  
personalized service innovation  
knowledge present quality  
development languages  
virtual classroom



## Hybrid Master's Degree

Update on Psychiatric Treatments  
in Child and Adolescent Patients

Modality: Hybrid (Online + Clinical Internship)

Duration: 12 months

Certificate: TECH Global University

Accreditation: 60 + 4 ECTS

# Hybrid Master's Degree

Update on Psychiatric Treatments in  
Child and Adolescent Patients

