

# Postgraduate Certificate

## Multiple Myeloma and Primary Amyloidosis





## Postgraduate Certificate Multiple Myeloma and Primary Amyloidosis

- » Modality: Online
- » Duration: 6 weeks
- » Certificate: TECH Global University
- » Accreditation: 6 ECTS
- » Schedule: at your own pace
- » Exams: online

Website: [www.techtute.com/us/medicine/postgraduate-certificate/multiple-myeloma-primary-amyloidosis](http://www.techtute.com/us/medicine/postgraduate-certificate/multiple-myeloma-primary-amyloidosis)

# Index

01

Introduction

---

*p. 4*

02

Objectives

---

*p. 8*

03

Structure and Content

---

*p. 12*

04

Study Methodology

---

*p. 16*

05

Certificate

---

*p. 26*

# 01

# Introduction

Multiple Myeloma and Primary Amyloidosis are oncohematological diseases that affect a large number of people worldwide. The need to train specialists in the diagnosis and treatment of these pathologies is crucial to improve the quality of life of patients and increase their chances of cure. For this reason TECH has created an innovative program that is designed to offer a complete and updated education on the basic to the most advanced aspects of pharmacological treatments. The program is 100% online, with a Relearning pedagogical methodology that allows a better understanding of the contents and flexibility in the organization of academic resources. Students will be supported by experts in the field and will have access to innovative and updated teaching material.





“

*With TECH you will discover the latest trends and techniques in the treatment of Multiple Myeloma and Primary Amyloidosis from leading experts in the field"*

Multiple Myeloma is a type of cancer that affects plasma cells, while Primary Amyloidosis is a condition in which abnormal proteins accumulate in the body's organs and tissues. These disorders impact a significant number of people worldwide, as they are difficult to treat and can be devastating for both patients and their families.

For this reason, it is essential to have specialists in Oncohematology who are up to date with the latest advances in the diagnosis and management of these diseases. The Postgraduate Certificate in Multiple Myeloma and Primary Amyloidosis is designed to equip healthcare professionals with the essential tools to face these clinical challenges.

The program focuses on providing students with a comprehensive understanding of the pathophysiology, diagnosis, and management of these hematological disorders. Through a practical, evidence-based approach, participants will learn to apply the latest techniques and treatment strategies in the care of patients with these conditions.

This Postgraduate Certificate is delivered in a 100% online format, allowing TECH students to study at their own pace and from any location. The innovative Relearning methodology is used to maximize learning efficiency, enabling students to consolidate and apply acquired knowledge immediately. In addition, students have on-demand access to cutting-edge educational materials, giving them the flexibility to organize their academic resources and study according to their own schedule.

This **Postgraduate Certificate in Multiple Myeloma and Primary Amyloidosis** contains the most complete and up-to-date scientific program on the market. Its most notable features are:

- ◆ The development of practical case studies presented by experts in Multiple Myeloma and Primary Amyloidosis
- ◆ The graphic, schematic and eminently practical contents with which it is conceived gather scientific and practical information on those disciplines that are indispensable for professional practice
- ◆ Practical exercises where the self-assessment process can be carried out to improve learning
- ◆ Its special emphasis on innovative methodologies
- ◆ Theoretical lessons, questions to the expert, debate forums on controversial topics, and individual reflection assignments
- ◆ Content that is accessible from any fixed or portable device with an Internet connection



*Access the Relearning pedagogical method, which will guarantee you a personalized learning experience, adapted to your pace and learning style"*

“

*With TECH you will have the opportunity to access a wide variety of job opportunities in the field of research, teaching or healthcare"*

The program's teaching staff includes professionals from the field who contribute their work experience to this educational program, as well as renowned specialists from leading societies and prestigious universities.

The multimedia content, developed with the latest educational technology, will provide the professional with situated and contextual learning, i.e., a simulated environment that will provide immersive education programmed to learn in real situations.

This program is designed around Problem-Based Learning, whereby the professional must try to solve the different professional practice situations that arise during the course. This will be done with the help of an innovative system of interactive videos made by renowned experts.

*Receive high-quality education in one of the most in-demand areas of the healthcare sector and become a highly qualified professional.*

*Become a leader in the field of Oncohematology by developing the skills and competencies offered through this Postgraduate Certificate.*



# 02 Objectives

The main objective of the Postgraduate Certificate in Multiple Myeloma and Primary Amyloidosis is to provide specialists with the latest scientific evidence in the field of Oncohematology. The student will be updated in the new diagnostic classifications and in the choice of specific treatments for these diseases. In addition, the syllabus focuses on the real long-term benefit of patients, away from the commercial interests of the pharmaceutical industry. Students will obtain a global and updated vision of the difficulties posed by these pathologies and will be able to address the challenges of daily clinical practice in this field. To this end, TECH establishes a series of general and specific objectives to fulfill future graduates' expectations.





“

*Enroll to learn how to use the latest technologies and tools in the field of Oncohematology to improve the quality of treatments and outcomes for patients.”*



## General Objectives

---

- ◆ Explore the etiopathogenesis, diagnosis, and prognosis of Myelodysplastic Syndromes
- ◆ Update pharmacological knowledge used in Oncohematology
- ◆ Investigate the latest scientific publications on the most appropriate treatments for Acute Lymphoblastic Leukemia (ALL)
- ◆ Delve into the growing problem of resistant microorganisms
- ◆ Assess the evidence and current recommendations on prophylaxis
- ◆ Deepen in the routine care of oncohematological patients affected by SARS-CoV2

“

*Enroll now and take advantage of a flexible learning methodology that allows you to organize your academic resources and study at your own pace, according to your needs”*





## Specific Objectives

---

- ◆ Update the most important concepts related to the diagnosis, prognosis, and treatment of these conditions
- ◆ Analyze the current controversial points, such as the concept of high-risk monoclonal gammopathy and the recommendations made by some authors on the tests and follow-up to be performed, which could, according to others, generate unnecessary iatrogenesis
- ◆ Delve into the controversy generated by the recommendations of some authors regarding the treatment of quiescent myelomas or biological relapses without CRAB criteria
- ◆ Approaching the therapeutic novelties in these entities
- ◆ Deepen in the advantages and disadvantages of each drug, each scheme and the possible sequences of them

03

# Structure and Content

The Postgraduate Certificate in Multiple Myeloma and Primary Amyloidosis provides students with the most up-to-date content on the treatment of these diseases, including relevant indexes and prognostic factors. The program explores the latest scientific evidence regarding the specific drugs used throughout the intervention process in patients. In addition, innovative learning materials are available 24/7, enabling flexible and effective learning.





“

*Are you looking for a rigorous update on the treatment of complex hematological diseases? This Postgraduate Certificate is the ideal option for developing the skills you need”*

## Module 1. Multiple Myeloma and Primary Amyloidosis

- 1.1. Monoclonal Gammopathy of Undetermined Significance (MGUS)
  - 1.1.1. Low- and High-Risk MGUS
  - 1.1.2. Recommended Evaluations
  - 1.1.3. Renal Significance Monoclonal Gammopathy and Other Subtypes
- 1.2. Multiple Myeloma (MM). Etiopathogenesis, Diagnosis, and Prognosis
  - 1.2.1. Diagnostic Criteria
  - 1.2.2. Genetic Alterations
  - 1.2.3. Prognostic Scoring Systems
- 1.3. Treatment Indications
  - 1.3.1. CRAB Criteria
  - 1.3.2. Smoldering Myeloma
- 1.4. MM. First-Line Treatment
  - 1.4.1. Eligibility for Autologous Stem Cell Transplant (ASCT) in First Line
  - 1.4.2. Classes of Drugs
  - 1.4.3. Recommended Combinations
- 1.5. Treatment of Relapsed/Refractory MM
  - 1.5.1. General Considerations. Treatment Indications
  - 1.5.2. Available Drugs
  - 1.5.3. Possible Algorithms and Sequences
- 1.6. New Treatments for MM
  - 1.6.1. Anti-BCMA Conjugated Antibodies
  - 1.6.2. Anti-BCMA Bispecific Antibodies
  - 1.6.3. Others: Elotuzumab, Selinexor





- 1.7. CAR T-Cell Therapy in MM
  - 1.7.1. Ciltacabtagene Autoleucl (Cilta-cel)
  - 1.7.2. Idecabtagene Vicleucl (Ide-cel)
- 1.8. Primary Amyloidosis. Diagnosis and Prognosis
  - 1.8.1. Etiopathogenesis
  - 1.8.2. Diagnosis
  - 1.8.3. Prognosis
- 1.9. Primary Amyloidosis. Treatment
  - 1.9.1. Role of Autologous Stem Cell Transplantation
  - 1.9.2. Alkylating Agents and Proteasome Inhibitors
  - 1.9.3. Role of Anti-CD38 Antibodies
- 1.10. Treatment Goals in MM/AL Amyloidosis
  - 1.10.1. Methodological Limitations in the Literature
  - 1.10.2. Validation of Surrogate Survival Endpoints

“Apply now and put your knowledge into practice in the medical field of bone marrow cancer”



# 04

# Study Methodology

TECH is the first university in the world to combine case study methodology with Relearning, a 100% online learning system based on guided repetition.

This innovative pedagogical strategy has been conceived to offer professionals the opportunity to update knowledge and develop skills in an intensive and rigorous way. A learning model that places the student at the center of the academic process and gives them the leading role, adapting to their needs and leaving aside the more conventional methodologies.





“

*TECH prepares you to face new challenges in uncertain environments and achieve success in your career”*

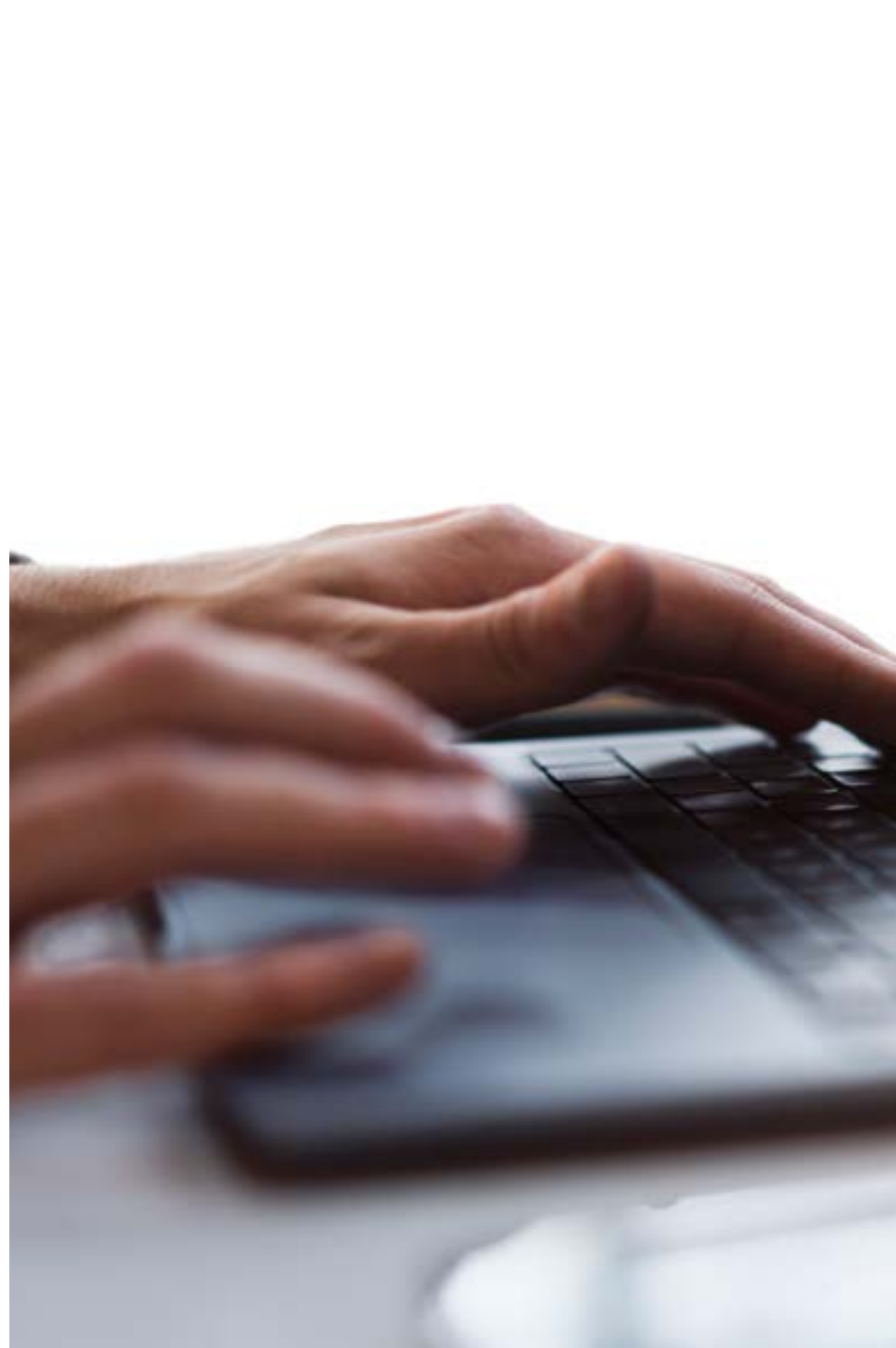
### The student: the priority of all TECH programs.

In TECH's study methodology, the student is the absolute protagonist. The pedagogical tools of each program have been selected taking into account the demands of time, availability and academic rigor that, today, not only students demand but also the most competitive positions in the market.

With TECH's asynchronous educational model, it is the student who chooses the time they spend studying, how they decide to establish their routines and all this from the comfort of the electronic device of their choice. The student will not have to attend live classes, which many times they cannot attend. The learning activities will be done when it is convenient for them. You will always be able to decide when and from where to study.

“

*At TECH you will NOT have in person classes (which you might not be able to attend)”*



## The most comprehensive curriculums at the international level

TECH is characterized by offering the most comprehensive academic itineraries in the university environment. This comprehensiveness is achieved through the creation of curriculums that not only cover the essential knowledge, but also the most recent innovations in each area.

By being constantly updated, these programs allow students to keep up with market changes and acquire the skills most valued by employers. In this way, those who complete their studies at TECH receive a comprehensive preparation that provides them with a notable competitive advantage to advance in their careers.

And what's more, they will be able to do so from any device, PC, tablet or smartphone.

“*TECH's model is asynchronous, so it allows you to study with your PC, tablet or smartphone wherever you want, whenever you want and for as long as you want*”

## Case Studies or Case Method

The case method has been the learning system most used by the best business schools in the world. Developed in 1912 so that law students would not only learn the law based on theoretical content, its function was also to present them with real complex situations. In this way, they could make informed decisions and value judgments about how to solve them. In 1924 it was established as a standard teaching method at Harvard.

With this teaching model, it is the student who builds their professional competence through strategies such as Learning by Doing or Design Thinking, which are used by other renowned institutions such as Yale or Stanford.

This action-oriented method will be applied throughout the entire academic itinerary that the student undertakes with TECH. Students will be confronted with multiple real-life situations and will have to integrate knowledge, research, argue and defend their ideas and decisions. All this with the premise of answering the question of how they would act when facing specific events of complexity in their daily work.





## Relearning Method

At TECH, case studies are enhanced with the best 100% online teaching method: Relearning.

This method breaks with traditional teaching techniques to put the student at the center of the equation, providing the best content in different formats. In this way, they are able to review and reiterate the key concepts of each subject and learn to apply them in a real environment.

Along the same lines, and according to multiple scientific researches, repetition is the best way to learn. For this reason, TECH offers between 8 and 16 repetitions of each key concept within the same lesson, presented in a different way, with the objective of ensuring that the knowledge is completely consolidated during the study process.

*Relearning will allow you to learn with less effort and more performance, involving you more in your specialization, developing a critical spirit, defending arguments and contrasting opinions: a direct equation to success.*



## A 100% online Virtual Campus with the best teaching resources

To apply its methodology effectively, TECH focuses on providing graduates with teaching materials in different formats: texts, interactive videos, illustrations and knowledge maps, among others. All of them are designed by qualified teachers who focus their work on combining real cases with the resolution of complex situations through simulation, the study of contexts applied to each professional career and learning based on reiteration, through audios, presentations, animations, images, etc.

The latest scientific evidence in the field of Neurosciences points to the importance of taking into account the place and context where the content is accessed before starting a new learning process. Being able to adjust these variables in a personalized way helps people to remember and store knowledge in the hippocampus for long-term retention. This is a model called Neurocognitive Context-Dependent E-Learning that is consciously applied in this university program.

Furthermore, in order to maximize tutor-student contact, a wide range of communication possibilities are provided, both in real time and deferred (internal messaging, discussion forums, telephone answering service, e-mail contact with the technical secretary, chat and videoconferencing).

Likewise, this very complete Virtual Campus will allow TECH students to organize their study schedules according to their personal availability or work obligations. In this way, they will have global control of the academic content and teaching tools, in accordance with their accelerated professional updating.



*The online mode of study of this program will allow you to organize your time and your learning pace, adapting it to your schedule”*

### The effectiveness of the method is justified by four fundamental achievements:

1. Students who follow this method not only achieve the assimilation of concepts, but also a development of their mental capacity, through exercises that assess real situations and the application of knowledge.
2. Learning is solidly translated into practical skills that allow the student to better integrate into the real world.
3. Ideas and concepts are understood more efficiently, given that the example situations are based on real-life.
4. Students like to feel that the effort they put into their studies is worthwhile. This then translates into a greater interest in learning and more time dedicated to working on the course.

## The university methodology best rated by its students

The results of this innovative academic model can be seen in the overall satisfaction levels of TECH graduates.

The students' assessment of the teaching quality, the quality of the materials, the structure of the program and its objectives is excellent. Not surprisingly, the institution has become the top-rated university by its students according to the global score index, obtaining a 4.9 out of 5.

*Access the study contents from any device with an Internet connection (computer, tablet, smartphone) thanks to the fact that TECH is up to date with the technological and pedagogical vanguard.*

*You will be able to learn with the advantages of access to simulated learning environments and the learning by observation approach, that is, the "Learning from an Expert" approach.*



Therefore, the best educational materials, thoroughly prepared, will be available in this program:



#### Study Material

All teaching material is produced by the specialists who teach the course, specifically for the course, so that the teaching content is highly specific and precise. This content is then adapted in an audiovisual format that will create our way of working online, with the latest techniques that allow us to offer you high quality in all of the material that we provide you with.



#### Practicing Skills and Abilities

You will carry out activities to develop specific skills and abilities in each thematic area. Exercises and activities to acquire and develop the skills and abilities that a specialist needs to develop within the context of the globalization in which we live.



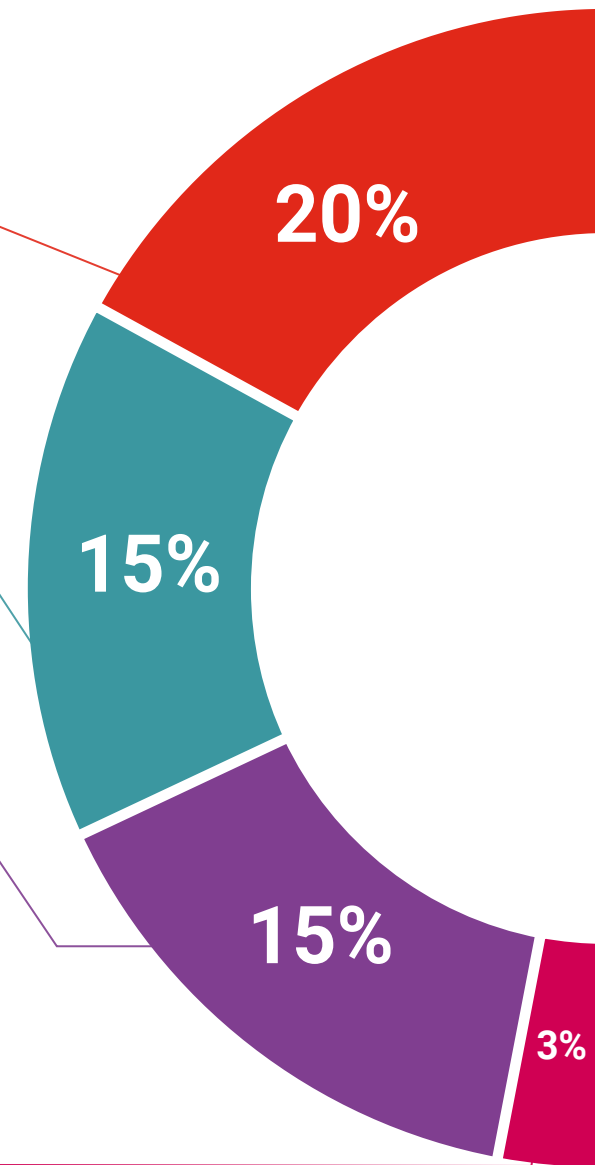
#### Interactive Summaries

We present the contents in an attractive and dynamic way in multimedia pills that include audio, videos, images, diagrams and concept maps in order to reinforce knowledge. This unique educational system for the presentation of multimedia content was awarded by Microsoft as "Successful Case in Europe."



#### Additional Reading

Recent articles, consensus documents, international guidelines... In our virtual library you will have access to everything you need to complete your course.







#### Case Studies

You will complete a selection of the best case studies in the field. Cases presented, analyzed and tutored by the best specialists in the world.



#### Testing & Retesting

We periodically evaluate and re-evaluate your knowledge throughout the program. We do this on 3 of the 4 levels of Miller's Pyramid.



#### Masterclasses

There is scientific evidence suggesting that observing third-party experts can be useful. Learning from an expert strengthens knowledge and recall, and generates confidence in our future difficult decisions.



#### Quick Action Guides

TECH offers the most relevant contents of the course in the form of worksheets or quick action guides. A synthetic, practical and effective way to help students progress in their learning.



# 05 Certificate

The Postgraduate Certificate in Multiple Myeloma and Primary Amyloidosis guarantees students, in addition to the most rigorous and up-to-date education, access to a diploma for the Postgraduate Certificate issued by TECH Global University.



“

*Successfully complete this program and receive your university qualification without having to travel or fill out laborious paperwork”*

This private qualification will allow you to obtain a diploma for the **Postgraduate Certificate in Multiple Myeloma and Primary Amyloidosis** endorsed by **TECH Global University**, the world's largest online university.

**TECH Global University**, is an official European University publicly recognized by the Government of Andorra ([official bulletin](#)). Andorra is part of the European Higher Education Area (EHEA) since 2003. The EHEA is an initiative promoted by the European Union that aims to organize the international training framework and harmonize the higher education systems of the member countries of this space. The project promotes common values, the implementation of collaborative tools and strengthening its quality assurance mechanisms to enhance collaboration and mobility among students, researchers and academics.

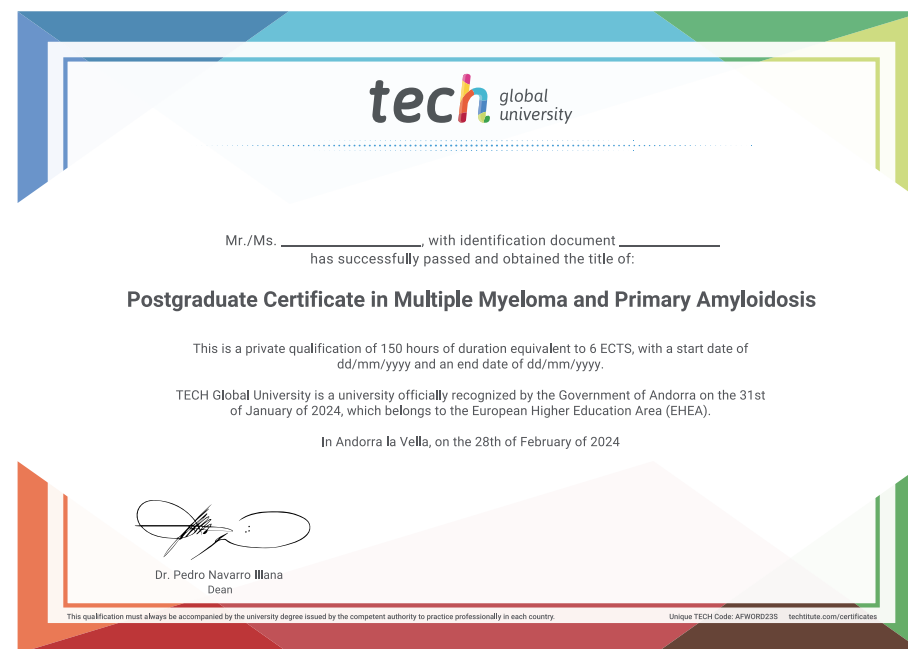
This **TECH Global University private qualification**, is a European program of continuing education and professional updating that guarantees the acquisition of competencies in its area of knowledge, providing a high curricular value to the student who completes the program.

Title: **Postgraduate Certificate in Multiple Myeloma and Primary Amyloidosis**

Modality: **Online**

Duration: **6 weeks**

Accreditation: **6 ECTS**



\*Apostille Convention. In the event that the student wishes to have their paper diploma issued with an apostille, TECH Global University will make the necessary arrangements to obtain it, at an additional cost.



future  
health confidence people  
education information tutors  
guarantee accreditation teaching  
institutions technology learning  
community commitment  
personalized service innovation  
knowledge present  
development languages  
virtual classroom

**tech** global  
university

## Postgraduate Certificate

Multiple Myeloma and  
Primary Amyloidosis

- » Modality: Online
- » Duration: 6 weeks
- » Certificate: TECH Global University
- » Accreditation: 6 ECTS
- » Schedule: at your own pace
- » Exams: online

# Postgraduate Certificate

## Multiple Myeloma and Primary Amyloidosis