

Master's Degree Emotional Intelligence



Master's Degree Emotional Intelligence

- » Modality: online
- » Duration: 12 months
- » Certificate: TECH Global University
- » Accreditation: 60 ECTS
- » Schedule: at your own pace
- » Exams: online

Website: www.techtute.com/us/education/professional-master-degree/master-emotional-intelligence

Index

01

Introduction to the Program

p. 4

02

Why Study at TECH?

p. 8

03

Syllabus

p. 12

04

Teaching Objectives

p. 16

05

Career Opportunities

p. 22

06

Study Methodology

p. 26

07

Teaching Staff

p. 36

08

Certificate

p. 42

01

Introduction to the Program

Awakening curiosity, stimulating attention, and improving student learning is effectively achieved by considering Emotional Intelligence. In recent years, the benefits of classroom activities that promote this aspect have gained widespread acceptance. Teaching now goes beyond mastering a subject, as professionals now handle a wide range of tools and pedagogical strategies. In order to foster the growth of educators, this exclusive degree program from TECH has emerged, delving into the brain of emotions, educational coaching, and the role of families in the emotional education of their children. This will all be made possible thanks to educational materials that provide the most up-to-date information in this field, created by specialists in Neuroscience and/or Psychopedagogy.





“

Thanks to this Master's Degree you will enrich and enhance the intelligence of your students. Enroll now”

In recent years, the educational field has understood that, beyond preparing children and adolescents for finding a job that aligns with their abilities and aspirations, it is necessary to work on other, often underappreciated aspects, such as the ability to express, understand, and manage emotions. This not only benefits the future adult, but also fosters better personal development at various stages of life, where individuals must navigate different situations that are not always easy to confront.

Teachers who instruct children or adolescents use various techniques and pedagogical actions aimed at enhancing Emotional Intelligence, regardless of the subject they teach. The growing knowledge of the brain, thanks to scientific research, as well as studies that delve into social behavior, have driven the inclusion of actions that benefit not only the student but also the teacher themselves.

This Master's Degree provides education professionals with an exhaustive curriculum with a theoretical-practical focus that will allow them to acquire advanced knowledge of Emotional Intelligence in childhood, the different theories and models that explain the development of this concept, and its application at various educational levels. The practical cases provided by the specialized teaching team will bring graduates even closer to situations they can apply in their classes.

In addition to obtaining updated knowledge, educators will benefit from a program offered in a convenient, flexible format exclusively delivered online. All that is needed is a computer, tablet, or mobile device to access the content whenever the students wish. Moreover, the Relearning system, used by TECH in all its programs, will enable a much more natural and agile academic progression throughout the duration of this degree program. Therefore, professionals have an excellent opportunity to progress in their careers with a program that is at the cutting edge of pedagogy.

This **Master's Degree in Emotional Intelligence** contains the most complete and up-to-date university program on the market. Its most notable features are:

- ♦ The development of practical case studies presented by experts in Emotional Intelligence
- ♦ The graphic, schematic and eminently practical contents with which it is conceived gather scientific and practical information on those disciplines that are indispensable for professional practice
- ♦ Practical exercises where self-assessment can be used to improve learning
- ♦ Its special emphasis on innovative methodologies
- ♦ Theoretical lessons, questions to the expert, debate forums on controversial topics, and individual reflection assignments
- ♦ Content that is accessible from any fixed or portable device with an internet connection



Promote self-esteem and the management of different emotions of your students with this university program in Emotional Intelligence"

“

Gain all the tools the educator needs to work on Emotional Intelligence with their students, with modules focused on each age group”

The program’s teaching staff includes professionals from the field who contribute their work experience to this educational program, as well as renowned specialists from leading societies and prestigious universities.

The multimedia content, developed with the latest educational technology, will provide the professional with situated and contextual learning, i.e., a simulated environment that will provide immersive education programmed to learn in real situations.

This program is designed around Problem-Based Learning, whereby the professional must try to solve the different professional practice situations that arise during the course. For this purpose, students will be assisted by an innovative interactive video system created by renowned experts.

Delve into emotions from Mayer and Salovey's model with this 100% online program.

Enroll now in a program that you can access 24 hours a day, being able to download the most current syllabus on educational leadership.



02

Why Study at TECH?

TECH is the world's largest online university. With an impressive catalog of more than 14,000 university programs, available in 11 languages, it is positioned as a leader in employability, with a 99% job placement rate. In addition, it has a huge faculty of more than 6,000 professors of the highest international prestige.



“

Study at the largest online university in the world and ensure your professional success. The future begins at TECH”

The world's best online university, according to FORBES

The prestigious Forbes magazine, specialized in business and finance, has highlighted TECH as "the best online university in the world" This is what they have recently stated in an article in their digital edition in which they echo the success story of this institution, "thanks to the academic offer it provides, the selection of its teaching staff, and an innovative learning method oriented to form the professionals of the future".

Forbes

The best online university in the world

The most complete **syllabus**

The most complete syllabuses on the university scene

TECH offers the most complete syllabuses on the university scene, with programs that cover fundamental concepts and, at the same time, the main scientific advances in their specific scientific areas. In addition, these programs are continuously updated to guarantee students the academic vanguard and the most demanded professional skills and the most in-demand professional competencies. In this way, the university's qualifications provide its graduates with a significant advantage to propel their careers to success.

The best top international faculty

TECH's faculty is made up of more than 6,000 professors of the highest international prestige. Professors, researchers and top executives of multinational companies, including Isaiah Covington, performance coach of the Boston Celtics; Magda Romanska, principal investigator at Harvard MetaLAB; Ignacio Wistumba, chairman of the department of translational molecular pathology at MD Anderson Cancer Center; and D.W. Pine, creative director of TIME magazine, among others.

TOP
international faculty



The most effective methodology

A unique learning method

TECH is the first university to use Relearning in all its programs. This is the best online learning methodology, accredited with international teaching quality certifications, provided by prestigious educational agencies. In addition, this innovative academic model is complemented by the "Case Method", thereby configuring a unique online teaching strategy. Innovative teaching resources are also implemented, including detailed videos, infographics and interactive summaries.

The world's largest online university

TECH is the world's largest online university. We are the largest educational institution, with the best and widest digital educational catalog, one hundred percent online and covering most areas of knowledge. We offer the largest selection of our own degrees and accredited online undergraduate and postgraduate degrees. In total, more than 14,000 university programs, in ten different languages, making us the largest educational institution in the world.

World's No.1
The World's largest online university

The official online university of the NBA

TECH is the official online university of the NBA. Thanks to our agreement with the biggest league in basketball, we offer our students exclusive university programs, as well as a wide variety of educational resources focused on the business of the league and other areas of the sports industry. Each program is made up of a uniquely designed syllabus and features exceptional guest hosts: professionals with a distinguished sports background who will offer their expertise on the most relevant topics.

Leaders in employability

TECH has become the leading university in employability. Ninety-nine percent of its students obtain jobs in the academic field they have studied within one year of completing any of the university's programs. A similar number achieve immediate career enhancement. All this thanks to a study methodology that bases its effectiveness on the acquisition of practical skills, which are absolutely necessary for professional development.



Google Premier Partner

The American technology giant has awarded TECH the Google Premier Partner badge. This award, which is only available to 3% of the world's companies, highlights the efficient, flexible and tailored experience that this university provides to students. The recognition not only accredits the maximum rigor, performance and investment in TECH's digital infrastructures, but also places this university as one of the world's leading technology companies.



The official online university of the NBA

TECH is the official online university of the NBA. Thanks to our agreement with the biggest league in basketball, we offer our students exclusive university programs, as well as a wide variety of educational resources focused on the business of the league and other areas of the sports industry. Each program is made up of a uniquely designed syllabus and features exceptional guest hosts: professionals with a distinguished sports background who will offer their expertise on the most relevant topics.



The top-rated university by its students

Students have positioned TECH as the world's top-rated university on the main review websites, with a highest rating of 4.9 out of 5, obtained from more than 1,000 reviews. These results consolidate TECH as the benchmark university institution at an international level, reflecting the excellence and positive impact of its educational model.



Leaders in employability

TECH has become the leading university in employability. Ninety-nine percent of its students obtain jobs in the academic field they have studied within one year of completing any of the university's programs. A similar number achieve immediate career enhancement. All this thanks to a study methodology that bases its effectiveness on the acquisition of practical skills, which are absolutely necessary for professional development.

03

Syllabus

The syllabus of this Master's Degree consists of a library of educational resources, including video summaries of each topic, specialized readings, interactive diagrams, and simulations of real-life cases. In this way, professionals will gain vast and advanced knowledge in Emotional Intelligence. Additionally, thanks to the unique Relearning system, students enrolled in this program will reduce the long study hours commonly associated with other teaching methods. This makes the online program more dynamic, visual, and engaging.





“

Access a university program that provides all the latest educational tools so you can delve deeper into the emotional brain with greater dynamism"

Module 1. The Emotional Brain

- 1.1. The Emotional Brain
- 1.2. Positive Emotions vs. Negative
- 1.3. Arousal vs. Valencia
- 1.4. Emotional Intelligence and the Education of Emotions according to the Mayer and Salovey Model
- 1.5. Other Models of Emotional Intelligence and Emotional Transformation
- 1.6. Social-Emotional Competencies and Creativity by Level of Intelligence
- 1.7. Emotional Coefficient vs. Intelligence
- 1.8. Alexithymia vs. Hyperemotiveness
- 1.9. Emotional Health
- 1.10. The Social Brain

Module 2. Emotional Intelligence

- 2.1. Emotional Intelligence Concept
- 2.2. Theories and Models of Emotional Intelligence
- 2.3. Components of Emotional Intelligence
- 2.4. Physiology of Emotional Intelligence
- 2.5. Evolution of Emotional Intelligence
- 2.6. Emotional Intelligence Assessment
- 2.7. Gender Differences of Emotional Intelligence
- 2.8. The Social Influence of Emotional Intelligence
- 2.9. Family and Emotional Intelligence
- 2.10. Myths and Truths of Emotional Intelligence

Module 3. Emotional Intelligence in Early Childhood, 0-6 Years Old

- 3.1. Characteristics of Early Childhood
- 3.2. Emotions in Early Childhood
- 3.3. The Role of Parents in Early Childhood
- 3.4. The Role of Others in Early Childhood
- 3.5. Development of Early Childhood
- 3.6. Emotional Disturbances in Early Childhood
- 3.7. Diagnosis in Early Childhood
- 3.8. EI Tools for Early Childhood Intervention
- 3.9. EI Intervention in Early Childhood
- 3.10. Efficacy Assessment in Childhood

Module 4. Emotional Intelligence in Early Childhood Teachers

- 4.1. The Role of a Pre-School Teacher
- 4.2. Functions and Limits of a Pre-School Teacher
- 4.3. Pre-School Teacher Detection and Diagnosis
- 4.4. Tools for Emotional Intelligence (EI) for Pre-School Educators
- 4.5. Intervention in EI for Early Pre-School Educators
- 4.6. Effectiveness of Intervention in EI for Pre-School Educators
- 4.7. Conflict with Peers among Pre-School Educators
- 4.8. Conflict with Parents by Pre-School Educators
- 4.9. EI Intervention in Pre-School Educators' Peer Conflict
- 4.10. Emotional Intelligence Intervention in the Work Environment of Pre-School Educators

Module 5. Emotional Intelligence in Primary School Teachers

- 5.1. The Role of a Primary School Teacher
- 5.2. Multiple Intelligences
- 5.3. Emotional Education in the Classroom
- 5.4. Key Stakeholders in Emotional Education
- 5.5. Elementary School Teacher Detection and Diagnosis
- 5.6. Systemic Teaching: A Comprehensive Approach to Education Today
- 5.7. Emotional Illiteracy in Primary School
- 5.8. Emotional Intelligence Helps Teach from a Place of Strength Rather Than Weakness
- 5.9. Emotional Intelligence in Effective and Affective Communication in Teachers
- 5.10. Emotional Intelligence in Effective and Affective Communication with Students

Module 6. Emotional Intelligence in Primary School, 6-12 Years Old

- 6.1. Characteristics of Primary School
- 6.2. Emotions in Primary School
- 6.3. The Role of Parents in Primary School
- 6.4. The Role of Others in Primary School
- 6.5. Development of Primary School
- 6.6. Emotional Disturbances in Primary School
- 6.7. Diagnosis in Primary School
- 6.8. EI Intervention Tools in Primary School
- 6.9. Emotional Intelligence Intervention in Primary School
- 6.10. Evaluation of the Efficiency of Emotional Intelligence in Primary School

Module 7. Emotional Intelligence in Secondary School, 12-16 Years Old

- 7.1. Characteristics of Secondary School
- 7.2. Emotions in Secondary School
- 7.3. The Role of Parents in Secondary School
- 7.4. The Role of Others in Secondary School
- 7.5. Development in Secondary School
- 7.6. Emotional Disturbances in Secondary School
- 7.7. Diagnosis in Secondary School
- 7.8. Emotional Intelligence Intervention Tools in Secondary School
- 7.9. Intervention with Emotional Intelligence in Secondary School
- 7.10. Evaluation of the Efficiency of Emotional Intelligence in Secondary School

Module 8. Emotional Intelligence in Secondary School Teachers

- 8.1. The Role of a Secondary School Teacher
- 8.2. Functions and Limits of a Secondary School Teacher
- 8.3. Secondary School Teacher Detection and Diagnosis
- 8.4. Emotional Intelligence Tools of Secondary School Teachers
- 8.5. Intervention in Emotional Intelligence of Secondary School Teachers
- 8.6. Effectiveness of Intervention in Emotional Intelligence of Secondary School Teachers
- 8.7. Secondary School Teacher Conflict with Colleagues
- 8.8. Secondary School Teacher Conflict with Parents
- 8.9. Intervention of Emotional Intelligence in the Conflict of a Secondary School Teacher
- 8.10. Intervention of Emotional Intelligence in the Work Environment of a Secondary School Teacher

Module 9. Educational Coaching

- 9.1. Defining Coaching
- 9.2. Coaching Tools
- 9.3. Requirements of Coaching
- 9.4. Coaching Applied in the Classroom
 - 9.4.1. Coaching Exercises in Class
 - 9.4.2. Coaching Tools in Class
- 9.5. Evaluation of the Intervention of Educational Coaching
- 9.6. Efficiency of Educational Coaching
- 9.7. Educational Proposals from Coaching
- 9.8. Participation of Education Staff in Coaching

Module 10. Educational Leadership

- 10.1. Structures of Power in an Education Center
- 10.2. Election and Functions of the Leader
- 10.3. Workplace Environment
- 10.4. School Conflict Among Teachers
- 10.5. Conflict with Students
- 10.6. Group Intervention Techniques
- 10.7. Leadership Techniques
- 10.8. Intervention Among Teachers
- 10.9. Intervention in the Classroom
- 10.10. Change in the Classroom



Apply educational coaching with maximum rigor in your classroom thanks to this university program"

04

Teaching Objectives

The professional who completes this university program will, upon completion, gain a thorough understanding of Emotional Intelligence, enabling them to comprehend the neurological elements that influence the perception and development of emotions. Additionally, they will acquire skills for applying various techniques and strategies aimed at emotional management in different contexts. They will also delve deeper into the study of Multiple Intelligences, understanding their impact on learning and personal development. All of this will be made possible thanks to the innovative teaching tools that TECH provides in its programs, promoting dynamic, up-to-date learning tailored to market needs.



“

An ideal academic option for individuals seeking to advance in their professional field without neglecting other aspects of their personal or professional life"



General Objectives

- ♦ Develop a deep understanding of Emotional Intelligence and its impact on personal and professional life
- ♦ Analyze the neurological and psychological processes that influence the perception, expression, and regulation of emotions
- ♦ Improve emotional skills in team management and leadership, promoting collaboration and group cohesion
- ♦ Apply specific techniques for emotional regulation, promoting personal and social well-being
- ♦ Foster emotional self-awareness to promote self-regulation, empathy, and self-confidence
- ♦ Develop skills for effectively managing emotional conflicts in various interpersonal and professional situations
- ♦ Integrate the theories of Multiple Intelligences in the educational and professional fields to optimize learning and performance
- ♦ Foster empathy and promote effective, assertive, and emotionally intelligent communication
- ♦ Promote the creation of work environments that enhance emotional well-being, motivation, and productivity
- ♦ Apply Emotional Intelligence to improve decision-making, resilience, and adaptability in changing contexts





Specific Objectives

Module 1. The Emotional Brain

- ♦ Analyze the Amygdala and Positive Emotion
- ♦ Discover what the Papez Circuit is
- ♦ Discover the relationship between Intelligence and the Life Cycle.
- ♦ Unravel the information on inherited intelligence
- ♦ Classify the direct assessment of intelligence
- ♦ Determine what the direct assessment of intelligence is
- ♦ Identify the Flynn Effect
- ♦ Understand the relationship between the Central Nervous System and emotional intelligence

Module 2. Emotional Intelligence

- ♦ Analyze Academic Intelligence
- ♦ Define Emotional Intelligence
- ♦ Understand Multiple Intelligences
- ♦ Clarify emotional illiteracy
- ♦ Classify high abilities
- ♦ Explore the field of giftedness
- ♦ Understand people with functional diversity
- ♦ Determine the role of Intelligence Labeling

Module 3. Emotional Intelligence in Early Childhood, 0-6 Years Old

- ♦ Define the Life Cycle of Emotional Intelligence
- ♦ Recognize the Qualitative Assessment of Emotional Intelligence
- ♦ Recognize the quantitative assessment of emotional intelligence.
- ♦ Provide practical strategies and resources to stimulate emotional intelligence in children aged 0 to 6 years

Module 4. Emotional Intelligence in Early Childhood Teachers

- ♦ Explore the relationship between Adulthood and Gender in Emotional Intelligence
- ♦ Analyze the Social Determinism of Emotional Intelligence
- ♦ Understand unitary intelligence
- ♦ Identify Multiple Intelligences

Module 5. Emotional Intelligence in Primary School Teachers

- ♦ Differentiate between Emotional Maturation and Emotional Intelligence
- ♦ Discover Emotional Relearning
- ♦ Observe the relationship between Intelligence and Social Competence
- ♦ Develop strategies for applying emotional intelligence in the classroom

Module 6. Emotional Intelligence in Primary School, 6-12 Years Old

- ♦ Analyze the relationship between Creativity and Intelligence
- ♦ Discover the role of Self-Knowledge and Intelligence
- ♦ Recognize social change in emotional intelligence
- ♦ Define the role of family patterns in emotional intelligence.

Module 7. Emotional Intelligence in Secondary School, 12-16 Years Old

- ♦ Understand the function of the Amygdala and Negative Emotion
- ♦ Recognize the intensity of emotion
- ♦ Clarify the affective value of emotion
- ♦ Provide effective tools for adolescents to learn how to regulate their emotions

Module 8. Emotional Intelligence in Secondary School Teachers

- ♦ Clarify the meaning of borderline personality.
- ♦ Recognize the role of emotional intelligence
- ♦ Recognize the types of Social Skills Techniques
- ♦ Classify types of Cognitive Restructuring Techniques

Module 9. Educational Coaching

- ♦ Discover the different types of relaxation techniques.
- ♦ Deepen knowledge in the applied practice of relaxation
- ♦ Rate the types of systematic desensitization techniques.
- ♦ Identify and understand the different types of biofeedback techniques

Module 10. Educational Leadership

- ♦ Verify the relationship between Intelligence and Creativity
- ♦ Explore Hypersensitivity to emotions
- ♦ Understand the relationship between Intelligence and Emotion
- ♦ Recognize Emotional Intelligence





“

You will be able to grow in your professional career with the help of a teaching prestigious team that will guide you at all times to achieve your goals”

05

Career Opportunities

This university program provides the necessary tools to access a range of career opportunities in key areas, such as schools, guidance centers, and student well-being departments. Additionally, those who acquire these competencies will be able to implement strategies to improve effective communication and handle conflicts with sensitivity and empathy. They will also be trained to design projects that promote socio-emotional development, contributing to a healthy and collaborative learning environment. Moreover, they will be prepared to work in educational counseling, educational leadership, and teacher training, supporting the overall well-being of students and educational professionals, as well as strengthening positive relationships within the school environment.



“

You will work in guidance centers and student well-being areas, applying effective strategies for emotional management and resolving conflicts with empathy and assertiveness”


Graduate Profile

The graduate of this Master's Degree will be a professional with advanced skills in managing others' emotions, fostering a positive and collaborative environment. Furthermore, their ability to identify and manage emotional imbalances will allow them to intervene effectively in educational and professional contexts, promoting well-being and holistic development. They will also be able to apply tools for effective communication, conflict resolution, and educational coaching, which will enhance motivation and performance in work teams or academic settings. Therefore, their strategic approach and knowledge in Emotional Intelligence will enable them to make well-informed decisions even in complex situations.

You will enhance your ability to identify and manage emotional imbalances, intervening with precision and sensitivity in educational contexts to achieve positive results in complex situations.

- ♦ **Empathy:** Identify and understand others' emotions and perspectives, which allows for genuine connections, improved communication, and conflict resolution with sensitivity
- ♦ **Adaptability:** Adjust to changes and unforeseen situations with flexibility, maintaining a positive attitude and focusing on effective solutions
- ♦ **Effective Communication:** Express ideas and emotions clearly and assertively, actively listening and considering others' opinions to avoid misunderstandings
- ♦ **Conflict Resolution** Approach disagreements constructively by analyzing the causes and proposing solutions that benefit all parties involved





After completing the Master's Degree, you will be able to use your knowledge and skills in the following positions:

1. **Educational Counselor:** Responsible for guiding students in their emotional and academic development, providing tools to manage conflicts and improve their overall well-being.
2. **Pedagogical Advisor:** Collaborates with teachers to implement emotional strategies and effective methodologies to optimize the learning environment.
3. **Student Well-being Coordinator:** Leads the design and supervision of programs to strengthen the socio-emotional well-being of students, promoting effective communication and conflict resolution.
4. **Teacher Trainer:** Dedicated to the training of education professionals in emotional skills and strategies to enhance communication and classroom management.
5. **Educational Consultant:** Advises academic institutions on the development of emotional intelligence programs and dynamics that foster a collaborative environment.
6. **School Mediator:** Responsible for intervening in school conflicts to facilitate dialogue and reach agreements that promote peaceful coexistence and mutual respect.
7. **Socio-emotional Project Leader:** Manages projects that promote emotional development and positive integration in educational contexts.
8. **Psychopedagogue:** Responsible for guiding students with emotional or adaptation difficulties, promoting healthy coping strategies.
9. **Academic Tutor** Accompanies students in their educational process, providing emotional and academic guidance to improve their performance and self-esteem.
10. **Curriculum Development Specialist:** Focuses on designing content and activities that integrate emotional intelligence and promote meaningful learning.
11. **Educational Coach:** Supports students and teachers in developing emotional and communication skills to achieve academic and personal goals.
12. **Facilitator of Socio-emotional Workshops:** Responsible for creating and leading practical workshops to strengthen emotional competencies such as empathy, stress management, and communication.

06

Study Methodology

TECH is the world's first university to combine the **case study** methodology with **Relearning**, a 100% online learning system based on guided repetition.

This disruptive pedagogical strategy has been conceived to offer professionals the opportunity to update their knowledge and develop their skills in an intensive and rigorous way. A learning model that places students at the center of the educational process giving them the leading role, adapting to their needs and leaving aside more conventional methodologies.



“

TECH will prepare you to face new challenges in uncertain environments and achieve success in your career”

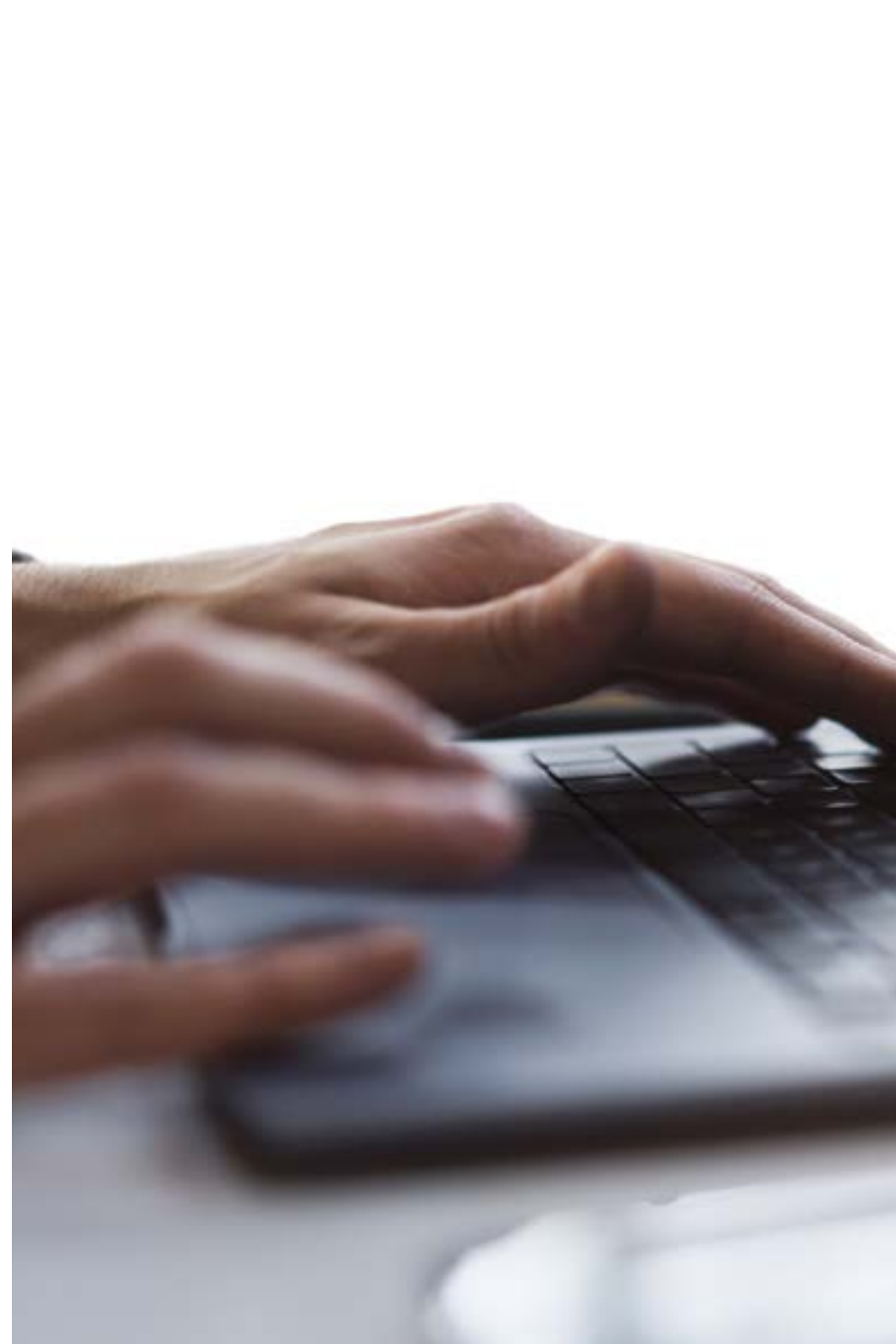
The student: the priority of all TECH programs

In TECH's study methodology, the student is the main protagonist. The teaching tools of each program have been selected taking into account the demands of time, availability and academic rigor that, today, not only students demand but also the most competitive positions in the market.

With TECH's asynchronous educational model, it is students who choose the time they dedicate to study, how they decide to establish their routines, and all this from the comfort of the electronic device of their choice. The student will not have to participate in live classes, which in many cases they will not be able to attend. The learning activities will be done when it is convenient for them. They can always decide when and from where they want to study.

“

*At TECH you will NOT have live classes
(which you might not be able to attend)”*



The most comprehensive study plans at the international level

TECH is distinguished by offering the most complete academic itineraries on the university scene. This comprehensiveness is achieved through the creation of syllabi that not only cover the essential knowledge, but also the most recent innovations in each area.

By being constantly up to date, these programs allow students to keep up with market changes and acquire the skills most valued by employers. In this way, those who complete their studies at TECH receive a comprehensive education that provides them with a notable competitive advantage to further their careers.

And what's more, they will be able to do so from any device, pc, tablet or smartphone.

“

TECH's model is asynchronous, so it allows you to study with your pc, tablet or your smartphone wherever you want, whenever you want and for as long as you want”

Case Studies and Case Method

The case method has been the learning system most used by the world's best business schools. Developed in 1912 so that law students would not only learn the law based on theoretical content, its function was also to present them with real complex situations. In this way, they could make informed decisions and value judgments about how to resolve them. In 1924, Harvard adopted it as a standard teaching method.

With this teaching model, it is students themselves who build their professional competence through strategies such as Learning by Doing or Design Thinking, used by other renowned institutions such as Yale or Stanford.

This action-oriented method will be applied throughout the entire academic itinerary that the student undertakes with TECH. Students will be confronted with multiple real-life situations and will have to integrate knowledge, research, discuss and defend their ideas and decisions. All this with the premise of answering the question of how they would act when facing specific events of complexity in their daily work.



Relearning Methodology

At TECH, case studies are enhanced with the best 100% online teaching method: Relearning.

This method breaks with traditional teaching techniques to put the student at the center of the equation, providing the best content in different formats. In this way, it manages to review and reiterate the key concepts of each subject and learn to apply them in a real context.

In the same line, and according to multiple scientific researches, reiteration is the best way to learn. For this reason, TECH offers between 8 and 16 repetitions of each key concept within the same lesson, presented in a different way, with the objective of ensuring that the knowledge is completely consolidated during the study process.

Relearning will allow you to learn with less effort and better performance, involving you more in your specialization, developing a critical mindset, defending arguments, and contrasting opinions: a direct equation to success.



A 100% online Virtual Campus with the best teaching resources

In order to apply its methodology effectively, TECH focuses on providing graduates with teaching materials in different formats: texts, interactive videos, illustrations and knowledge maps, among others. All of them are designed by qualified teachers who focus their work on combining real cases with the resolution of complex situations through simulation, the study of contexts applied to each professional career and learning based on repetition, through audios, presentations, animations, images, etc.

The latest scientific evidence in the field of Neuroscience points to the importance of taking into account the place and context where the content is accessed before starting a new learning process. Being able to adjust these variables in a personalized way helps people to remember and store knowledge in the hippocampus to retain it in the long term. This is a model called Neurocognitive context-dependent e-learning that is consciously applied in this university qualification.

In order to facilitate tutor-student contact as much as possible, you will have a wide range of communication possibilities, both in real time and delayed (internal messaging, telephone answering service, email contact with the technical secretary, chat and videoconferences).

Likewise, this very complete Virtual Campus will allow TECH students to organize their study schedules according to their personal availability or work obligations. In this way, they will have global control of the academic content and teaching tools, based on their fast-paced professional update.



The online study mode of this program will allow you to organize your time and learning pace, adapting it to your schedule”

The effectiveness of the method is justified by four fundamental achievements:

1. Students who follow this method not only achieve the assimilation of concepts, but also a development of their mental capacity, through exercises that assess real situations and the application of knowledge.
2. Learning is solidly translated into practical skills that allow the student to better integrate into the real world.
3. Ideas and concepts are understood more efficiently, given that the example situations are based on real-life.
4. Students like to feel that the effort they put into their studies is worthwhile. This then translates into a greater interest in learning and more time dedicated to working on the course.

The university methodology top-rated by its students

The results of this innovative teaching model can be seen in the overall satisfaction levels of TECH graduates.

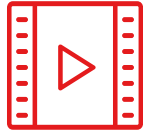
The students' assessment of the teaching quality, the quality of the materials, the structure of the program and its objectives is excellent. Not surprisingly, the institution became the top-rated university by its students according to the global score index, obtaining a 4.9 out of 5.

Access the study contents from any device with an Internet connection (computer, tablet, smartphone) thanks to the fact that TECH is at the forefront of technology and teaching.

You will be able to learn with the advantages that come with having access to simulated learning environments and the learning by observation approach, that is, Learning from an expert.



As such, the best educational materials, thoroughly prepared, will be available in this program:



Study Material

All teaching material is produced by the specialists who teach the course, specifically for the course, so that the teaching content is highly specific and precise.

This content is then adapted in an audiovisual format that will create our way of working online, with the latest techniques that allow us to offer you high quality in all of the material that we provide you with.



Practicing Skills and Abilities

You will carry out activities to develop specific competencies and skills in each thematic field. Exercises and activities to acquire and develop the skills and abilities that a specialist needs to develop within the framework of the globalization we live in.



Interactive Summaries

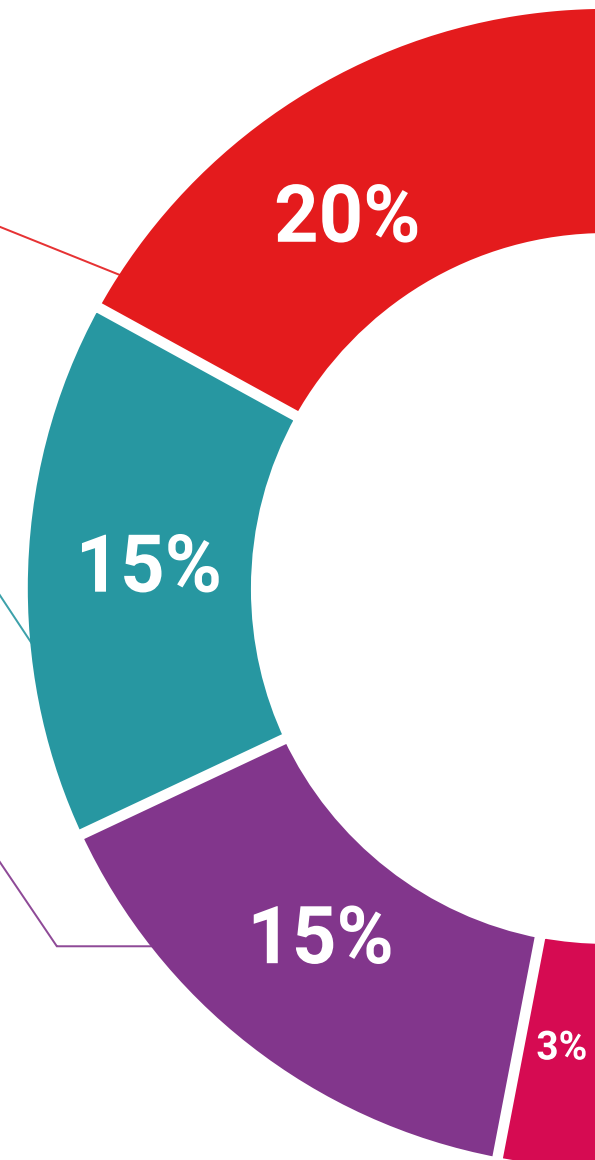
We present the contents attractively and dynamically in multimedia lessons that include audio, videos, images, diagrams, and concept maps in order to reinforce knowledge.

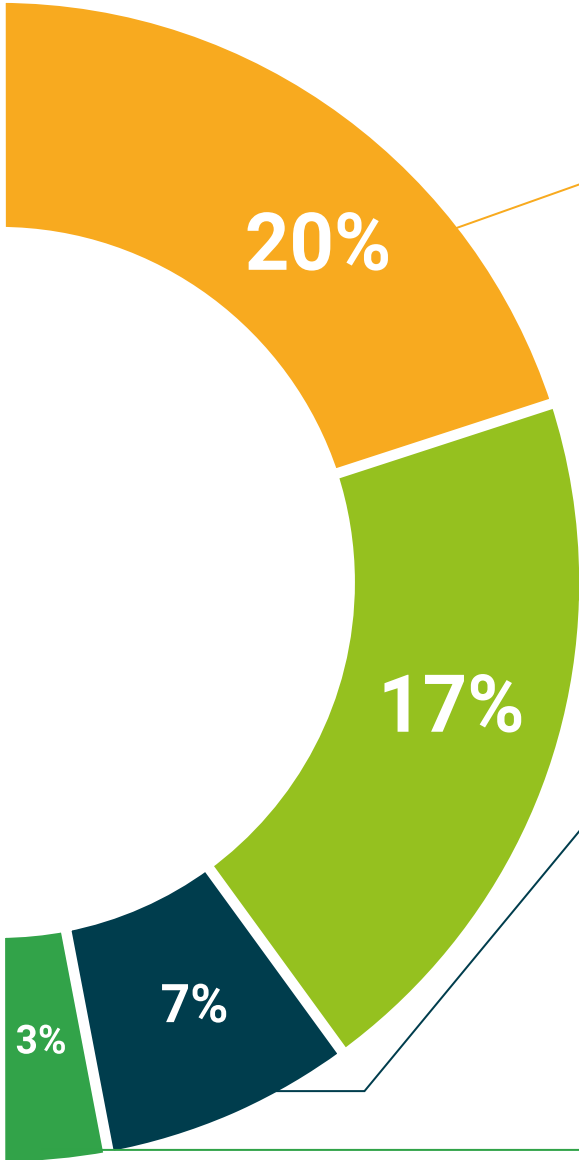
This exclusive educational system for presenting multimedia content was awarded by Microsoft as a "European Success Story".



Additional Reading

Recent articles, consensus documents, international guides... In our virtual library you will have access to everything you need to complete your education.





Case Studies

Students will complete a selection of the best case studies in the field. Cases that are presented, analyzed, and supervised by the best specialists in the world.



Testing & Retesting

We periodically assess and re-assess your knowledge throughout the program. We do this on 3 of the 4 levels of Miller's Pyramid.



Classes

There is scientific evidence suggesting that observing third-party experts can be useful.
Learning from an expert strengthens knowledge and memory, and generates confidence for future difficult decisions.



Quick Action Guides

TECH offers the most relevant contents of the course in the form of worksheets or quick action guides. A synthetic, practical and effective way to help students progress in their learning.



07

Teaching Staff

TECH strives to offer quality education in all its programs, responding to the demands of students seeking updated knowledge that can propel their professional careers. For this reason, the academic institution has carefully selected the faculty who teach this Master's Degree. Thus, graduates will have access to a team of directors and faculty with expertise in the academic field, particularly in Neuroscience and Psychopedagogy. Moreover, students will be able to consult this team for any questions they have about the course material throughout the 7-month duration of this academic opportunity.





“

Only with the best professionals will you acquire the necessary knowledge in Emotional Intelligence to apply it efficiently in your classroom. Enroll now”

Guest Director



Dr. De la Serna, Juan Moisés

- ♦ Independent Psychologist and expert writer in Neurosciences
- ♦ Writer specialized in Psychology and Neurosciences
- ♦ Author of the Open Chair of Psychology and Neurosciences
- ♦ Scientific Disseminator
- ♦ Doctorate in Psychology
- ♦ Bachelor's Degree in Psychology. University of Seville
- ♦ Master's Degree in Neurosciences and Behavioral Biology. Pablo de Olavide University, Seville
- ♦ Expert in Teaching Methodology. La Salle University
- ♦ University Specialist in Clinical Hypnosis, Hypnotherapy. National University of Distance Education - UNED.
- ♦ Diploma in Social Graduate, Human Resources Management, Personnel Administration. University of Seville
- ♦ Expert in Project Management, Administration and Business Management. Federation of Services U.G.T
- ♦ Trainer of Trainers. Official College of Psychologists of Andalusia

Management



Ms. Jiménez Romero, Yolanda

- ♦ Pedagogical Advisor and External Educational Collaborator
- ♦ Academic Coordinator of Online University Campus
- ♦ Territorial Director of the Extremadura-Castile La Mancha Institute of High Abilities
- ♦ Creation of INTEF Educational Contents in the Ministry of Education and Science
- ♦ Degree in Primary Education with a specialization in English
- ♦ Psychopedagogue by the International University of Valencia
- ♦ Master's Degree in Neuropsychology of High Abilities
- ♦ Master's Degree in Emotional Intelligence Specialist in NLP Practitioner

Teachers

Ms. Rodríguez Ruiz, Celia

- ♦ Clinical Psychologist at EVEL Center
- ♦ Psychopedagogical Area Manager at Atenea Study Center.
- ♦ Pedagogical Advisor at Cuadernos Rubio
- ♦ Editor of Hacer Familia Magazine
- ♦ Editor of Webconsultas Healthcare Medical Team
- ♦ Collaborator at the Eduardo Punset Foundation
- ♦ Bachelor's Degree in Psychology from the UNED
- ♦ Bachelor's Degree in Pedagogies from the Complutense University Madrid
- ♦ Specialist in Cognitive Behavioral Therapy in Childhood and Adolescence from the UNED
- ♦ Specialist in Clinical Psychology and Child Psychotherapy by INUPSI
- ♦ Trained in Emotional Intelligence, Neuropsychology, Dyslexia, ADHD, Positive Emotions and Communication.

Ms. Martínez Zarza, Ana María

- ♦ Director of the Center for Personal Growth, Ana Zarza.
- ♦ Director of workshops for parents on Emotional Intelligence and Coaching.
- ♦ Degree in Psychopedagogy from UNED
- ♦ Postgraduate Diploma in Emotional Intelligence at the UNIR
- ♦ Specialist in Transpersonal Therapy by the European University Miguel de Cervantes.
- ♦ Advanced Course in Coaching by the University Rey Juan Carlos





Mr. Salido Durán, Daniel

- ♦ Transpersonal Therapist
- ♦ University Expert in Emotional Intelligence
- ♦ Master's Degree in Educational Coaching
- ♦ Bachelor's Degree in Philosophy and Educational Sciences from the University of Seville

Mr. Monllor Pérez, Francisco

- ♦ Integrative Therapist and Family Educator
- ♦ Coordinator at La Escuela de la Vida Family Care and Training Center.
- ♦ Certified Mentor of the e-FP Project in Vocational Training
- ♦ Master's Degree in Clinical Psychology from Maimonides University. Buenos Aires
- ♦ Higher Postgraduate Diploma in Emotional Intelligence, Mindfulness and Positive Psychology
- ♦ Diploma in Osteopathy
- ♦ Associate of the Argentinean Society of Stress Medicine.

08

Certificate

The Master's Degree in Emotional Intelligence guarantees students, in addition to the most rigorous and up-to-date education, access to a Postgraduate Certificate issued by TECH Global University..





“

Successfully complete this program and receive your university qualification without having to travel or fill out laborious paperwork”

This private qualification will allow you to obtain a **Master's Degree in Emotional Intelligence** endorsed by **TECH Global University**, the world's largest online university.

TECH Global University is an official European University publicly recognized by the Government of Andorra (**official bulletin**). Andorra is part of the European Higher Education Area (EHEA) since 2003. The EHEA is an initiative promoted by the European Union that aims to organize the international training framework and harmonize the higher education systems of the member countries of this space. The project promotes common values, the implementation of collaborative tools and strengthening its quality assurance mechanisms to enhance collaboration and mobility among students, researchers and academics.

This **TECH Global University** private qualification is a European program of continuing education and professional updating that guarantees the acquisition of competencies in its area of knowledge, providing a high curricular value to the student who completes the program.

Title: **Master's Degree in Emotional Intelligence**

Modality: **online**

Duration: **12 months**

Accreditation: **60 ECTS**



*Apostille Convention. In the event that the student wishes to have their paper diploma issued with an apostille, TECH Global University will make the necessary arrangements to obtain it, at an additional cost.



Master's Degree Emotional Intelligence

- » Modality: online
- » Duration: 12 months
- » Certificate: TECH Global University
- » Accreditation: 60 ECTS
- » Schedule: at your own pace
- » Exams: online

Master's Degree Emotional Intelligence

