

# Internship Program

## Inclusive Education for Children and Adolescents in Situations of Social Exclusion



**Internship Program**  
Inclusive Education for  
Children and Adolescents in  
Situations of Social Exclusion

# Index

01

Introduction to the Program

---

*p. 4*

02

Why Study at TECH?

---

*p. 6*

03

Teaching Objectives

---

*p. 10*

04

Internship

---

*p. 12*

05

Internship Centers

---

*p. 14*

06

General Conditions

---

*p. 18*

07

Certificate

---

*p. 20*

# 01

## Introduction to the Program

Inclusive education for children and adolescents in situations of social exclusion is essential to ensure that all students, regardless of their circumstances, can access quality education. In Europe, approximately 65% of children with disabilities attend regular schools, however, significant challenges remain, such as lack of accessibility in school infrastructures, lack of specialized teaching and care staff, and insufficient financial resources. In Europe, approximately 65% of children with disabilities attend regular schools, however, significant challenges remain, such as lack of accessibility in school infrastructures, lack of specialized teaching and care staff, and insufficient financial resources.

“

*With this Internship Program, you will develop key skills to face the challenges presented by students at risk of social exclusion, improving your ability to adapt and respond”*







Inclusive Education for Children and Adolescents in Situations of Social Exclusion has become a global priority, as it constitutes a fundamental step towards equity in education. According to European Commission reports, approximately 15% of children in Europe are at risk of poverty or social exclusion, which significantly limits their access to quality education. And since the most effective way to improve these skills is through practice, TECH has created a program that includes a 120-hour experience in an educational center.

In this way, over the course of 3 weeks, the graduate will be part of a team of highly qualified specialists, with whom they will actively collaborate in Inclusive Education services, working with real students. This will allow them not only to be updated in innovative pedagogical methodologies, but also to integrate the most effective communication skills into their daily practice. In this context, you will participate in a program designed to maximize your teaching talent, enriching your skills in conflict management and mediation with students, families and other professionals.

During the stay, the specialist will be accompanied by an assistant tutor, who will ensure that all the objectives foreseen for this Internship Program are achieved. This will allow the professional to work with full confidence and security, applying the most effective educational methodologies and mediation techniques to date.

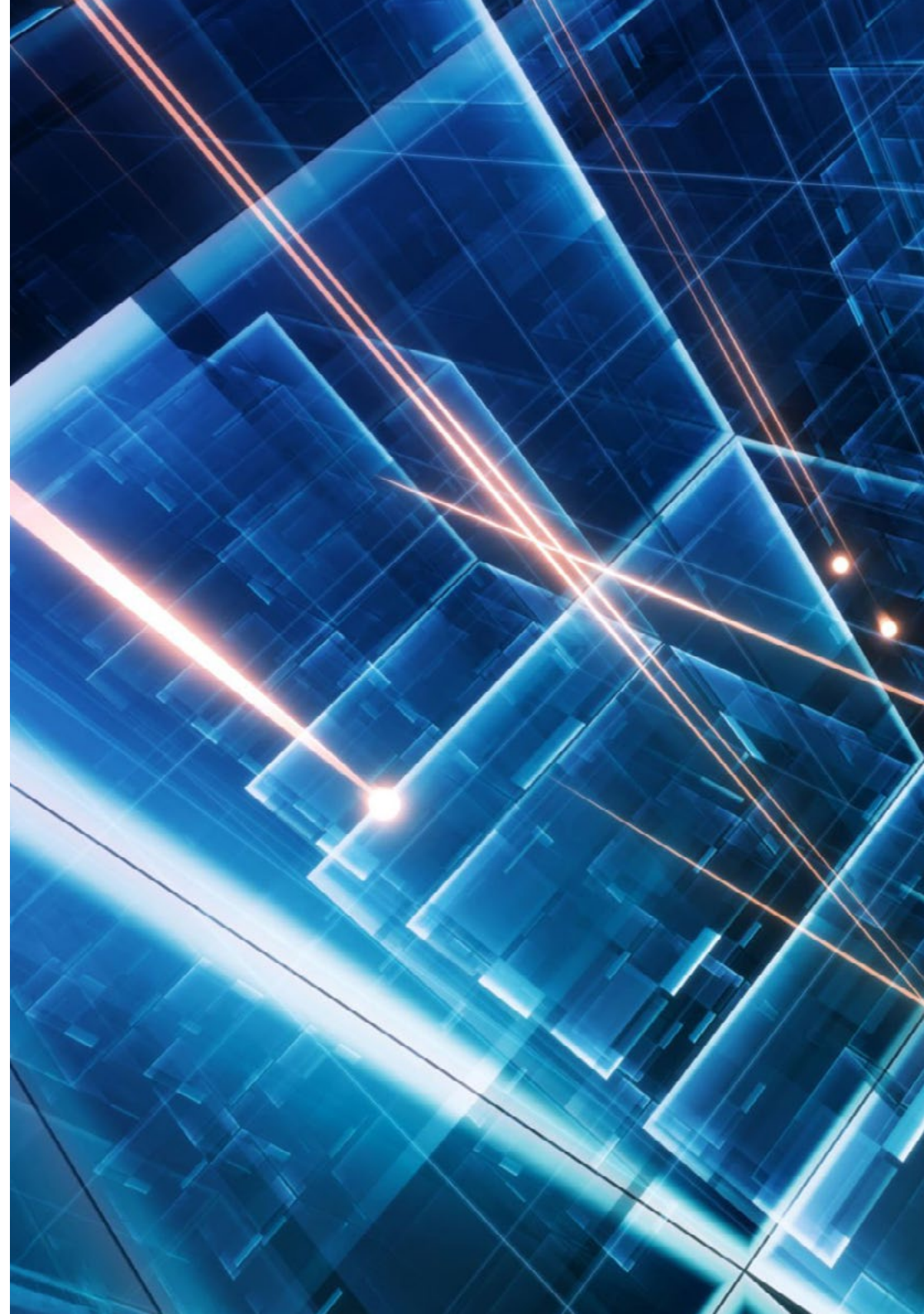
# 02

## Why Study at TECH?

TECH is the world's largest online university. With an impressive catalog of more than 14,000 university programs, available in 11 languages, it is positioned as a leader in employability, with a 99% job placement rate. In addition, it has a huge faculty of more than 6,000 professors of the highest international prestige.

“

*TECH combines Relearning and the Case Method in all its university programs to guarantee excellent theoretical and practical learning by studying when you want and from wherever you want”*





“

*Study at the largest online university in the world and ensure your professional success. The future begins at TECH”*

### The world's best online university, according to FORBES

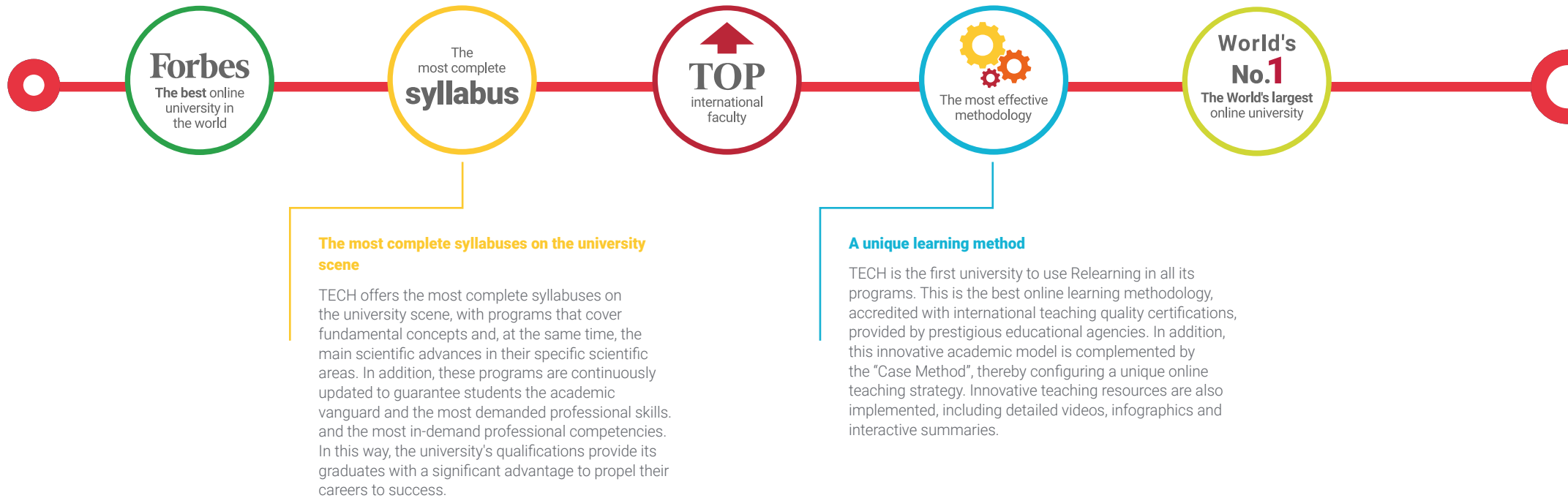
The prestigious Forbes magazine, specialized in business and finance, has highlighted TECH as "the best online university in the world" This is what they have recently stated in an article in their digital edition in which they echo the success story of this institution, "thanks to the academic offer it provides, the selection of its teaching staff, and an innovative learning method oriented to form the professionals of the future".

### The best top international faculty

TECH's faculty is made up of more than 6,000 professors of the highest international prestige. Professors, researchers and top executives of multinational companies, including Isaiah Covington, performance coach of the Boston Celtics; Magda Romanska, principal investigator at Harvard MetaLAB; Ignacio Wistumba, chairman of the department of translational molecular pathology at MD Anderson Cancer Center; and D.W. Pine, creative director of TIME magazine, among others.

### The world's largest online university

TECH is the world's largest online university. We are the largest educational institution, with the best and widest digital educational catalog, one hundred percent online and covering most areas of knowledge. We offer the largest selection of our own degrees and accredited online undergraduate and postgraduate degrees. In total, more than 14,000 university programs, in ten different languages, making us the largest educational institution in the world.





#### The official online university of the NBA

TECH is the official online university of the NBA. Thanks to our agreement with the biggest league in basketball, we offer our students exclusive university programs, as well as a wide variety of educational resources focused on the business of the league and other areas of the sports industry. Each program is made up of a uniquely designed syllabus and features exceptional guest hosts: professionals with a distinguished sports background who will offer their expertise on the most relevant topics.

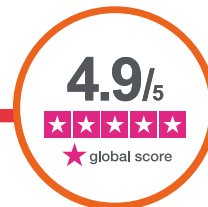
#### Leaders in employability

TECH has become the leading university in employability. Ninety-nine percent of its students obtain jobs in the academic field they have studied within one year of completing any of the university's programs. A similar number achieve immediate career enhancement. All this thanks to a study methodology that bases its effectiveness on the acquisition of practical skills, which are absolutely necessary for professional development.



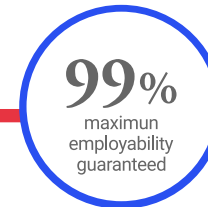
#### Google Premier Partner

The American technology giant has awarded TECH the Google Premier Partner badge. This award, which is only available to 3% of the world's companies, highlights the efficient, flexible and tailored experience that this university provides to students. The recognition not only accredits the maximum rigor, performance and investment in TECH's digital infrastructures, but also places this university as one of the world's leading technology companies.



#### The top-rated university by its students

Students have positioned TECH as the world's top-rated university on the main review websites, with a highest rating of 4.9 out of 5, obtained from more than 1,000 reviews. These results consolidate TECH as the benchmark university institution at an international level, reflecting the excellence and positive impact of its educational model.



# 03

## Teaching Objectives

The main objective will be to provide teachers with the opportunity to apply the theoretical knowledge acquired on educational inclusion in a real environment. During this period, they will be able to adapt their pedagogical methodologies to the specific needs of students at risk of social exclusion, while working in collaboration with teams of specialized professionals. In addition, they will focus on strengthening their skills in diversity management, conflict resolution and mediation with students, families and other key actors, contributing to a more equitable and quality education for all.



### General Objectives

---

- ♦ Apply inclusive strategies adapted to the educational needs of socially excluded students
- ♦ Develop skills to work with diversity in the classroom, promoting the integration and participation of all students
- ♦ Strengthen skills in conflict management and mediation with students, families and other members of the educational community
- ♦ Integrate innovative pedagogical methodologies that favor inclusive and equitable learning
- ♦ Acquire practical experience in adapting educational content and resources for students with different abilities and contexts
- ♦ Collaborate with other educational and social professionals to design and implement support plans that promote the well-being and inclusion of students





## Specific Objectives

---

- ♦ Apply Inclusive Education methodologies in real educational contexts
- ♦ Identify and analyze the needs of students in situations of social exclusion
- ♦ Develop skills to design activities adapted to the needs of diversity in the classroom
- ♦ Encourage the participation of students in their learning process
- ♦ Use inclusive assessment tools to measure the progress of all students
- ♦ Promote collaborative work among students, respecting their differences
- ♦ Apply mediation techniques for conflict resolution in the classroom
- ♦ Develop strategies to involve families in the educational process of their children
- ♦ Establish effective communication protocols with families and other professionals
- ♦ Reflect on the importance of ongoing training in inclusive education
- ♦ Promote a positive and safe learning environment for students at risk of social exclusion
- ♦ Identify physical, social or cultural barriers to school inclusion
- ♦ Effectively manage diversity in the classroom, ensuring equity for all students
- ♦ Apply support programs for students with Special Educational Needs (SEN)
- ♦ Develop teamwork skills with other professionals (psychologists, social workers, etc.)
- ♦ Implement individualized attention practices for students with greater vulnerability in their educational process



# 04

## Internship

The Internship Program's Internship Program in Inclusive Education for Children and Adolescents in Situations of Social Exclusion consists of a 3-week experience in a renowned educational center, from Monday to Friday, with 8 hours of practical training per day, always guided by a specialist. During this time, the teacher will have the opportunity to work with real students, collaborating with a team of experts in the area, applying the most advanced pedagogical strategies and actively participating in educational planning.

Likewise, in this totally practical training proposal, the activities will focus on the development and improvement of essential competencies to provide educational services in the field of Inclusive Education, a field that requires high qualification. In this way, the internship will be aimed at a specialized preparation for the exercise of this function, in a safe environment for the student and with a high level of professional performance.

The practical part will be carried out with the active participation of the student performing the activities and procedures of each area of competence (learning to learn and learning to do), with the accompaniment and guidance of teachers and other training partners that facilitate teamwork and multidisciplinary integration as transversal competences for educational praxis (learning to be and learning to do).

The procedures described below will be the basis of the practical part of the training, and its realization will be subject to the center's own availability and workload, being the proposed activities the following:





Module	Practical Activity
Pedagogical Activities in the Classroom	Adapt didactic materials to the needs of the students
	Design inclusive strategies to encourage the participation of all students
	Apply cooperative and collaborative methodologies in the learning process
	Continuous evaluation of students' academic and emotional progress
Emotional Intervention and Support	Implement emotional support programs for vulnerable students
	Establish secure emotional bonds to facilitate school integration
	Identify and manage stressful or anxious situations among students
	Coordinate with Mental Health professionals to provide comprehensive support
Collaboration with Families	Organize meetings with families to create a personalized intervention plan
	Propose activities and resources to engage families in the educational process
	Advise families on the specific needs of their children
	Promote fluid communication between the educational center and the home
Teamwork and School Coordination	Collaborate with other teachers and professionals to design an inclusive educational plan
	Coordinate with the psycho-pedagogical support team to address the needs of the students
	Participate in team meetings to evaluate progress and implemented pedagogical strategies
	Develop joint activities with social services to strengthen the student support network
Conflict Management and Mediation	Apply mediation techniques to resolve conflicts between students
	Identify disruptive behaviors and establish preventive strategies
	Intervene in cases of bullying or school violence in order to promote a safe environment
	Promote a culture of respect and empathy in the classroom through awareness-raising activities



# 05

## Internship Centers

The centers will offer graduates the opportunity to put into practice the knowledge acquired in a real environment, working with students in vulnerable situations and at risk of social exclusion. In addition, they are committed to diversity, providing a space where teachers will be able to implement inclusive pedagogical strategies, collaborate with other professionals and contribute to the creation of a safe and accessible environment for all students. They will also have the supervision and support of experts in the field, receiving constant feedback and improving their professional competencies in the field of inclusive education.

“

*The partner practice centers are prestigious educational institutions, with extensive experience and a comprehensive approach towards Inclusive Education, backed by TECH's quality assurance”*








## Inclusive Education for Children and Adolescents | 15 in Situations of Social Exclusion

tech

The student will be able to do this program at the following centers:



Education

### Instituto Rambla Barcelona

Country	City
Spain	Barcelona

Address: Rambla de Catalunya,  
16, 08007 Barcelona

Rambla Instituto offers a wide variety of high quality of high  
quality training programs in a variety in a variety of areas  
of study

---

**Related internship programs:**  
- Digital Education, E-Learning and Social Media



Education

**Instituto Rambla Madrid**

Country  
Spain

City  
Madrid

Address: C/ Gran Vía, 59, 10A, 28013 Madrid

Rambla Instituto offers a wide variety of high quality of high quality training programs in a variety in a variety of areas of study

**Related internship programs:**

- Digital Education, E-Learning and Social Media







## Inclusive Education for Children and Adolescents | 17 in Situations of Social Exclusion

tech



### Instituto Rambla Valencia

Country

Spain

City

Valencia

Address: Carrer de Jorge Juan, 17, 46004  
València, Valencia

Rambla Instituto offers a wide variety of high quality of high  
quality training programs in a variety in a variety of areas  
of study

#### Related internship programs:

- Digital Education, E-Learning and Social Media



# 06

## General Conditions

### Civil Liability Insurance

The university's main concern is to guarantee the safety of the interns, other collaborating professionals involved in the internship process at the center. Among the measures dedicated to achieve this is the response to any incident that may occur during the entire teaching-learning process.

To this end, the university commits to purchasing a civil liability insurance policy to cover any eventuality that may arise during the stay at the internship center.

This liability policy for interns will have broad coverage and will be taken out prior to the start of the Internship Program period. That way professionals will not have to worry in case of having to face an unexpected situation and will be covered until the end of the internship program at the center.



## General Conditions of the Internship Program

The general terms and conditions of the internship program agreement shall be as follows:

**1. TUTOR:** During the Internship Program, students will be assigned with two tutors who will accompany them throughout the process, answering any doubts and questions that may arise. On the one hand, there will be a professional tutor belonging to the internship center who will have the purpose of guiding and supporting the student at all times. On the other hand, they will also be assigned with an academic tutor, whose mission will be to coordinate and help the students during the whole process, solving doubts and facilitating everything they may need. In this way, the student will be accompanied and will be able to discuss any doubts that may arise, both clinical and academic.

**2. DURATION:** The internship program will have a duration of three continuous weeks, in 8-hour days, 5 days a week. The days of attendance and the schedule will be the responsibility of the center and the professional will be informed well in advance so that they can make the appropriate arrangements.

**3. ABSENCE:** If the students does not show up on the start date of the Internship Program, they will lose the right to it, without the possibility of reimbursement or change of dates. Absence for more than two days from the internship, without justification or a medical reason, will result in the professional's withdrawal from the internship, therefore, automatic termination of the internship. Any problems that may arise during the course of the internship must be urgently reported to the academic tutor.

**4. CERTIFICATION:** Professionals who pass the Internship Program will receive a certificate accrediting their stay at the center.

**5. EMPLOYMENT RELATIONSHIP:** The Internship Program shall not constitute an employment relationship of any kind.

**6. PRIOR EDUCATION:** Some centers may require a certificate of prior education for the Internship Program. In these cases, it will be necessary to submit it to the TECH internship department so that the assignment of the chosen center can be confirmed.

**7. DOES NOT INCLUDE:** The Internship Program will not include any element not described in the present conditions. Therefore, it does not include accommodation, transportation to the city where the internship takes place, visas or any other items not listed.

However, students may consult with their academic tutor for any questions or recommendations in this regard. The academic tutor will provide the student with all the necessary information to facilitate the procedures in any case.

# 07 Certificate

This private qualification will allow you to obtain a diploma for the **Internship Program in Inclusive Education for Children and Adolescents in Situations of Social Exclusion** endorsed by **TECH Global University**, the world's largest online university.

**TECH Global University**, is an official European University publicly recognized by the Government of Andorra ([official bulletin](#)). Andorra is part of the European Higher Education Area (EHEA) since 2003. The EHEA is an initiative promoted by the European Union that aims to organize the international training framework and harmonize the higher education systems of the member countries of this space. The project promotes common values, the implementation of collaborative tools and strengthening its quality assurance mechanisms to enhance collaboration and mobility among students, researchers and academics.

This **TECH Global University private qualification**, is a European program of continuing education and professional updating that guarantees the acquisition of competencies in its area of knowledge, providing a high curricular value to the student who completes the program.

Title: **Internship Program in Inclusive Education for Children and Adolescents in Situations of Social Exclusion**

Duration: **3 weeks**

Attendance: **Monday to Friday, 8-hour consecutive shifts**

Credits: **4 ECTS**





future  
health confidence people  
education information tutors  
guarantee accreditation teaching  
institutions technology learning  
community commitment  
personalized service innovation  
knowledge present quality  
online training  
development language  
classroom



**Internship Program**  
Inclusive Education for Children  
and Adolescents in Situations of  
Social Exclusion

# Internship Program

## Inclusive Education for Children and Adolescents in Situations of Social Exclusion

