

Postgraduate Certificate Psychopedagogical Counseling for Families at Psychosocial Risk





Postgraduate Certificate Psychopedagogical Counseling for Families at Psychosocial Risk

- » Modality: online
- » Duration: 6 weeks
- » Certificate: TECH Global University
- » Credits: 4 ECTS
- » Schedule: at your own pace
- » Exams: online

Website: www.techtute.com/us/education/postgraduate-certificate/psychopedagogical-counseling-families-psychosocial-risk

Index

01

Introduction

p. 4

02

Objectives

p. 8

03

Course Management

p. 12

04

Structure and Content

p. 16

05

Methodology

p. 20

06

Certificate

p. 28

01

Introduction

Working with families is one of the areas of educational psychologists' occupation that involves all their therapeutic skills. This aspect becomes more intense with the influence of the psychosocial risk situations in which their work usually takes place. An exhaustive and complete knowledge, such as the one offered by this program, is the best tool to achieve success.





“

Working with families in situations of psychosocial risk requires psychopedagogists to use diverse and sometimes complex tools"

Psychopedagogy has reached, by its own merits, a place of recognition in the current scientific panorama. The knowledge of this discipline has become the subject of Articles, Monographs, and Publications at International level that have shaped a Panorama of great interest for the Professional. These developments have led to advances in Techniques, Disciplines, and Modes of Presence and Intervention that make constant updating an Indispensable Condition.

This increasingly broad program leaves the educational center in order to reach all types of sectors, specifically the socio-labor field, where it becomes an invaluable asset. The new social and labor circumstances, the new educational challenges, the vertiginous evolution of cultural contexts and many other challenges, require the greatest capacity in the professionals of Psychopedagogy.

In terms of intervention, mediation with families has also become increasingly important. The incursion of new technologies in social, school, or family life, sexual or functional diversity, or any of the new paradigms are not static, but evolve and constantly require a competent look that supports, guides, and serves as a reference and, in turn, has adequate professional support.

A thorough overview of intense challenges that, in this comprehensive program, TECH tries to help students face. With the most complete human and technological resources that will allow us to move forward in a safe, comfortable and efficient manner.

This **Postgraduate Certificate in Psychopedagogical Counseling for Families in Psychosocial Risk Situations** contains the most complete and up-to-date program on the market. Its most notable features are:

- ♦ Practical cases presented by Psychopedagogy Experts
- ♦ Designed with graphic, schematic, and eminently practical content
- ♦ Latest advancements on School Psychopedagogy
- ♦ Practical Exercises where the Self-assessment Process can be Carried Out in Order to Improve Learning
- ♦ Algorithm-based interactive learning system for decision-making in the situations that are presented to the student
- ♦ Evidence-based Methodologies in School Psychopedagogy
- ♦ Theoretical lessons, questions to the expert, debate forums on controversial topics, and individual reflection assignments
- ♦ Content that is accessible from any fixed or portable device with an Internet connection



A few weeks of intensive work that will allow you to incorporate new ways of approaching your work in the family environment"

“*The new approach and detection formulas of the most up-to-date Psychopedagogy, in a high-intensity capacitive program*”

The teaching staff of this Postgraduate Certificate in Psychopedagogical Counseling for Families in Psychosocial Risk Situations is made up of professionals in the sector, who pour all their knowledge and experience into this program to produce quality content, in addition to recognized specialists belonging to leading societies and prestigious universities.

The Multimedia Content has been elaborated with the latest Educational Technology, which will allow the Professional a situated and contextual learning, through which the student will be able to study in a simulated environment in which they will be able to learn in real situations.

The design of this program is based on Problem-Based Learning, so that the professional will have to try to solve the different situations of Professional Practice that arise throughout the program. For this reason, students will be assisted by an innovative, interactive video system created by renowned and experienced experts in the field of School Psychopedagogy with extensive teaching experience.

A specialized program that will allow you to include in your résumé, the added value of a high-quality Postgraduate Certificate.

All you need is your will to improve, we provide the rest.



02 Objectives

The main objective of this program is to offer a high-quality complement to students' skill sets. Through the development of a very complete program, TECH will accompany you in the acquisition of the necessary skills and competencies to be able to deal with the challenges that Psychopedagogy faces in the exercise of its task. But it will also promote personal growth through a curriculum created to encourage intellectual development.





“

At your own pace, organizing your learning yourself, you will advance through a complete and concrete syllabus"



General Objectives

- Acquire new competencies and skills in the area of Psychopedagogy
- Get up to date in the field of Psychopedagogy in the school area
- Develop the capacity to face new situations in the school context
- Encourage interest in the constant updating of professionals
- Get to know the different intervention options
- Learn new ways of dealing with special educational needs
- Achieve an efficient framework for assessment, diagnosis and guidance
- Be able to research and innovate in order to respond to new demands





Specific Objectives

- ♦ Identify the different family models in order to create specific dynamics to promote the well-being of all family members
- ♦ Value psychopedagogical and socio-educational intervention as a necessary tool for families in situations of psychosocial risk
- ♦ Discover the necessity of the Intervention of the psychopedagogue to favor the relationship between the family and the school

“ *Achievable, measurable and highly applicable objectives – so that your efforts give you the results you need* ”

03

Course Management

For our program to be of the highest quality, we are proud to work with a teaching staff of the highest level, chosen for their proven track record in the field of education. Professionals from different areas and fields of expertise that make up a complete, multidisciplinary team. A unique opportunity to learn from the best.





“

An impressive teaching staff, made up of professionals from different areas of expertise, will be your teachers during the program: a unique opportunity not to be missed”

Management



D. Alfonso Suárez, Álvaro

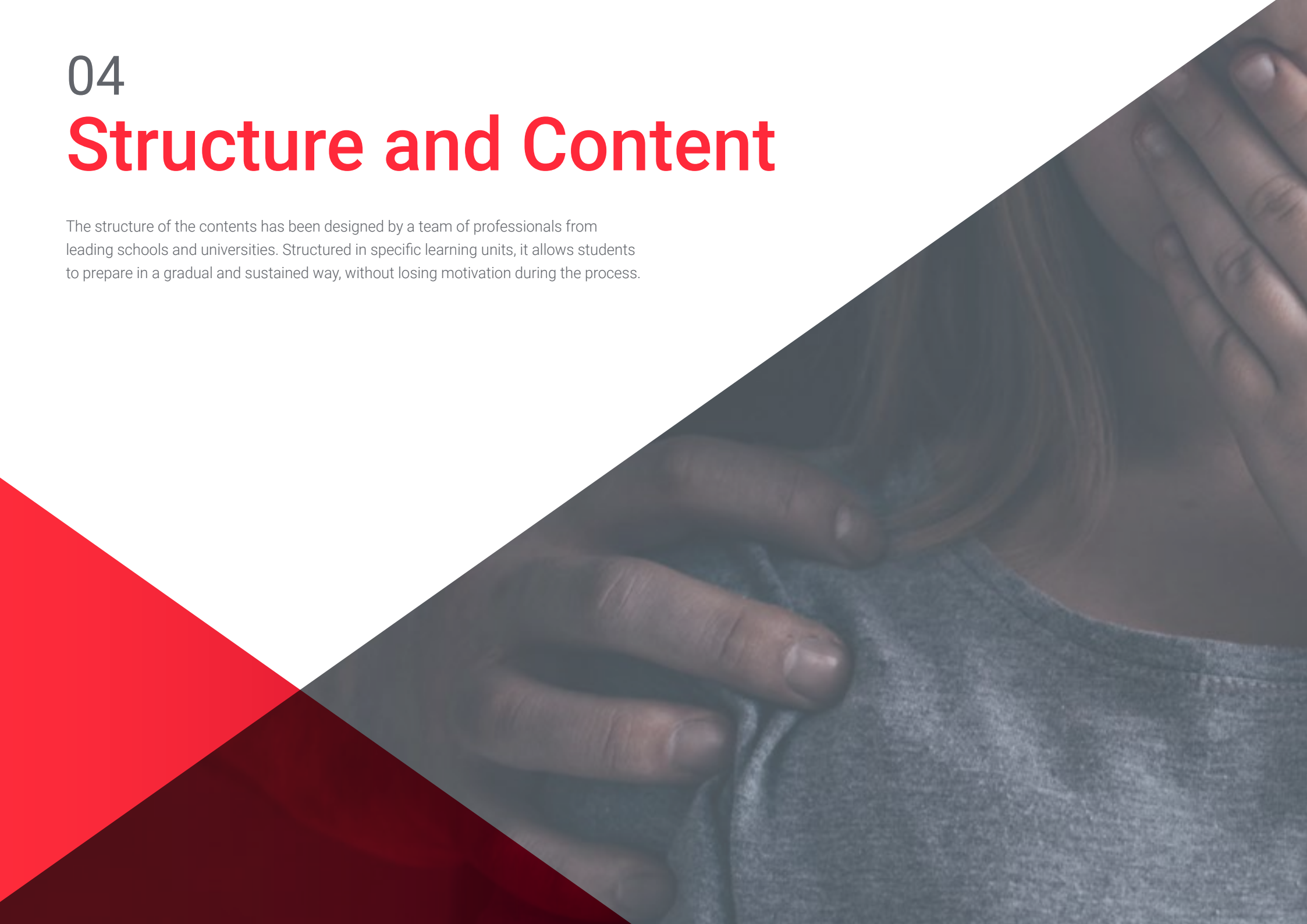
- ♦ Teacher of Educational Reinforcement for Students with Specific Educational Needs
- ♦ Technician in Social and Health Care for Dependent People in Social Institutions
- ♦ Social integration technician: Design, development and evaluation of social insertion interventions for people with severe mental illness
- ♦ Graduate in Psychopedagogy from the University of Laguna



04

Structure and Content

The structure of the contents has been designed by a team of professionals from leading schools and universities. Structured in specific learning units, it allows students to prepare in a gradual and sustained way, without losing motivation during the process.



“

A straightforward and concrete syllabus, chosen to give you the greatest efficiency for your learning"

Module 1. Psychopedagogical Counseling for Families at Psychosocial Risk

- 1.1. Construction of the Concept of Family
 - 1.1.1. Concept and Theories about the Family. Functions, Dynamics, Rules, and Roles
 - 1.1.1.1. The Family as a Context for Human Development
 - 1.1.1.2. Family Functions
 - 1.1.1.3. Family Dynamics and Rules
 - 1.1.1.4. Roles within the Family Context
- 1.2. Evolution of Family Institution
 - 1.2.1. Social Changes and New Forms of Family Coexistence
 - 1.2.1.1. The Influence of Social Changes on the Family
 - 1.2.1.2. New Family Forms
 - 1.2.2. Family Educational Styles
 - 1.2.2.1. Democratic Style
 - 1.2.2.2. Authoritarian Style
 - 1.2.2.3. Negligent Style
 - 1.2.2.4. Indulgent Style
- 1.3. Families at Psychosocial Risk
 - 1.3.1. Psychosocial Risk, Psychosocial Risk Assessment Criteria, and Families at Psychosocial Risk
 - 1.3.1.1. What is Psychosocial Risk?
 - 1.3.1.2. Psychosocial Risk Assessment Criteria
 - 1.3.1.3. Families in Psychosocial Risk Situations
 - 1.3.2. Risk Factors vs. Protective Factors
 - 1.3.2.1. Risk Factors
 - 1.3.2.2. Protective Factors
- 1.4. Processes of Orientation and Psychopedagogical Intervention
 - 1.4.1. Conceptualization of Psychopedagogical Intervention and Models of Psycho-Pedagogical Intervention
 - 1.4.1.1. Concept of Psychopedagogical Intervention in the Family Environment
 - 1.4.1.2. Models of Psychopedagogical Intervention
 - 1.4.2. Recipients, Areas, and Contexts of Psychopedagogical Intervention
 - 1.4.2.1. Recipients of the Psychopedagogical Intervention
 - 1.4.2.2. Areas of the Psychopedagogical Intervention
 - 1.4.2.3. Contexts of the Psychopedagogical Intervention
- 1.5. Socio-Educational Intervention with Families
 - 1.5.1. Concept, Foundations and Models of Family SocioEducational Intervention
 - 1.5.1.1. Socio-Educational Intervention with Families
 - 1.5.1.2. Principles of Psychoeducational Intervention with Families
 - 1.5.1.3. Fundamentals of Socio-educational Intervention with Families: Elements, Criteria to Take into Account, and Levels of Intervention
 - 1.5.1.4. Models of Socio-Educational Intervention with Families
- 1.6. Socio-Educational Intervention with Families (II)
 - 1.6.1. Family Intervention Educational Teams, Professional Skills and Tools and Techniques
 - 1.6.1.1. Educational Teams of Family Intervention
 - 1.6.1.2. Professional Skills
 - 1.6.1.3. Tools and Techniques
- 1.7. Intervention in Situations of Risk and Child Abuse in the Family
 - 1.7.1. Conceptualization and Typology of Child Abuse
 - 1.7.1.1. The Concept of Child Abuse
 - 1.7.1.2. Types of Child Abuse
 - 1.7.2. Actions Against Child Abuse
 - 1.7.2.1. Detection, Assessment, and Care
 - 1.7.2.2. Protocols
- 1.8. Collaborative Frameworks Between Family and School
 - 1.8.1 Family and School as Collaborative Environments. Forms of Family Participation in the School
 - 1.8.1.1. Family and School as Collaborative Environments
 - 1.8.1.2. Forms of Family Participation in the School
 - 1.8.1.3. Parenting School and Parental Education



“

*Interesting, motivating and stimulating:
our Postgraduate Certificate will take
you through a process of empowerment
and personal growth"*

05

Methodology

This training program offers a different way of learning. Our methodology uses a cyclical learning approach: **Relearning**.

This teaching system is used, for example, in the most prestigious medical schools in the world, and major publications such as the **New England Journal of Medicine** have considered it to be one of the most effective.



“

Discover Relearning, a system that abandons conventional linear learning, to take you through cyclical teaching systems: a way of learning that has proven to be extremely effective, especially in subjects that require memorization"

At TECH Education School we use the Case Method

In a given situation, what should a professional do? Throughout the program students will be presented with multiple simulated cases based on real situations, where they will have to investigate, establish hypotheses and, finally, resolve the situation. There is an abundance of scientific evidence on the effectiveness of the method.

With TECH, educators can experience a learning methodology that is shaking the foundations of traditional universities around the world.



It is a technique that develops critical skills and prepares educators to make decisions, defend their arguments, and contrast opinions.

“

Did you know that this method was developed in 1912, at Harvard, for law students? The case method consisted of presenting students with real-life, complex situations for them to make decisions and justify their decisions on how to solve them. In 1924, Harvard adopted it as a standard teaching method”

The effectiveness of the method is justified by four fundamental achievements:

1. Educators who follow this method not only grasp concepts, but also develop their mental capacity, by evaluating real situations and applying their knowledge.
2. The learning process is solidly focused on practical skills that allow educators to better integrate the knowledge into daily practice.
3. Ideas and concepts are understood more efficiently, given that the example situations are based on real-life teaching.
4. Students like to feel that the effort they put into their studies is worthwhile. This then translates into a greater interest in learning and more time dedicated to working on the course.



Relearning Methodology

At TECH we enhance the case method with the best 100% online teaching methodology available: Relearning.

Our University is the first in the world to combine case studies with a 100% online learning system based on repetition, combining a minimum of 8 different elements in each lesson, which represent a real revolution with respect to simply studying and analyzing cases.

Educators will learn through real cases and by solving complex situations in simulated learning environments. These simulations are developed using state-of-the-art software to facilitate immersive learning.



At the forefront of world teaching, the Relearning method has managed to improve the overall satisfaction levels of professionals who complete their studies, with respect to the quality indicators of the best online university (Columbia University).

With this methodology we have trained more than 85,000 educators with unprecedented success in all specialties. All this in a highly demanding environment, where the students have a strong socio-economic profile and an average age of 43.5 years.

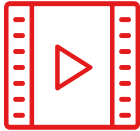
*Relearning will allow you to learn with less effort
and better performance, involving you more in
your specialization, developing a critical mindset,
defending arguments, and contrasting opinions:
a direct equation to success.*

In our program, learning is not a linear process, but rather a spiral (learn, unlearn, forget, and re-learn). Therefore, we combine each of these elements concentrically.

The overall score obtained by our learning system is 8.01, according to the highest international standards.



This program offers the best educational material, prepared with professionals in mind:



Study Material

All teaching material is produced by the specialist educators who teach the course, specifically for the course, so that the teaching content is really specific and precise.

These contents are then applied to the audiovisual format, to create the TECH online working method. All this, with the latest techniques that offer high quality pieces in each and every one of the materials that are made available to the student.



Educational Techniques and Procedures on Video

TECH introduces students to the latest techniques, with the latest educational advances, and to the forefront of Education. All this, first-hand, with the maximum rigor, explained and detailed for your assimilation and understanding. And best of all, you can watch them as many times as you want.



Interactive Summaries

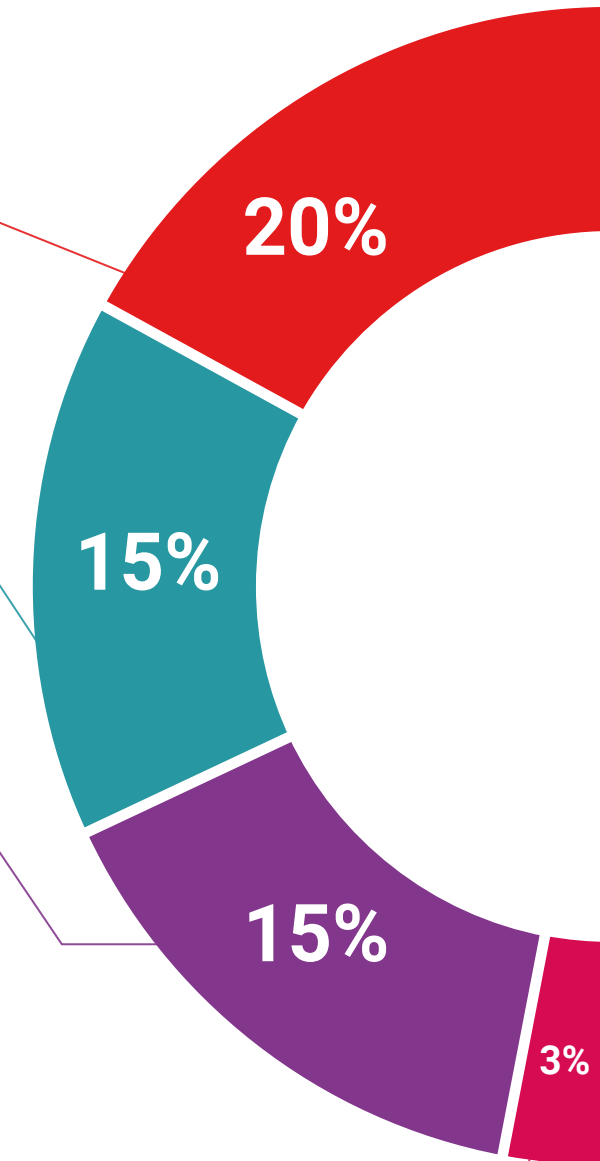
The TECH team presents the contents attractively and dynamically in multimedia lessons that include audio, videos, images, diagrams, and concept maps in order to reinforce knowledge.

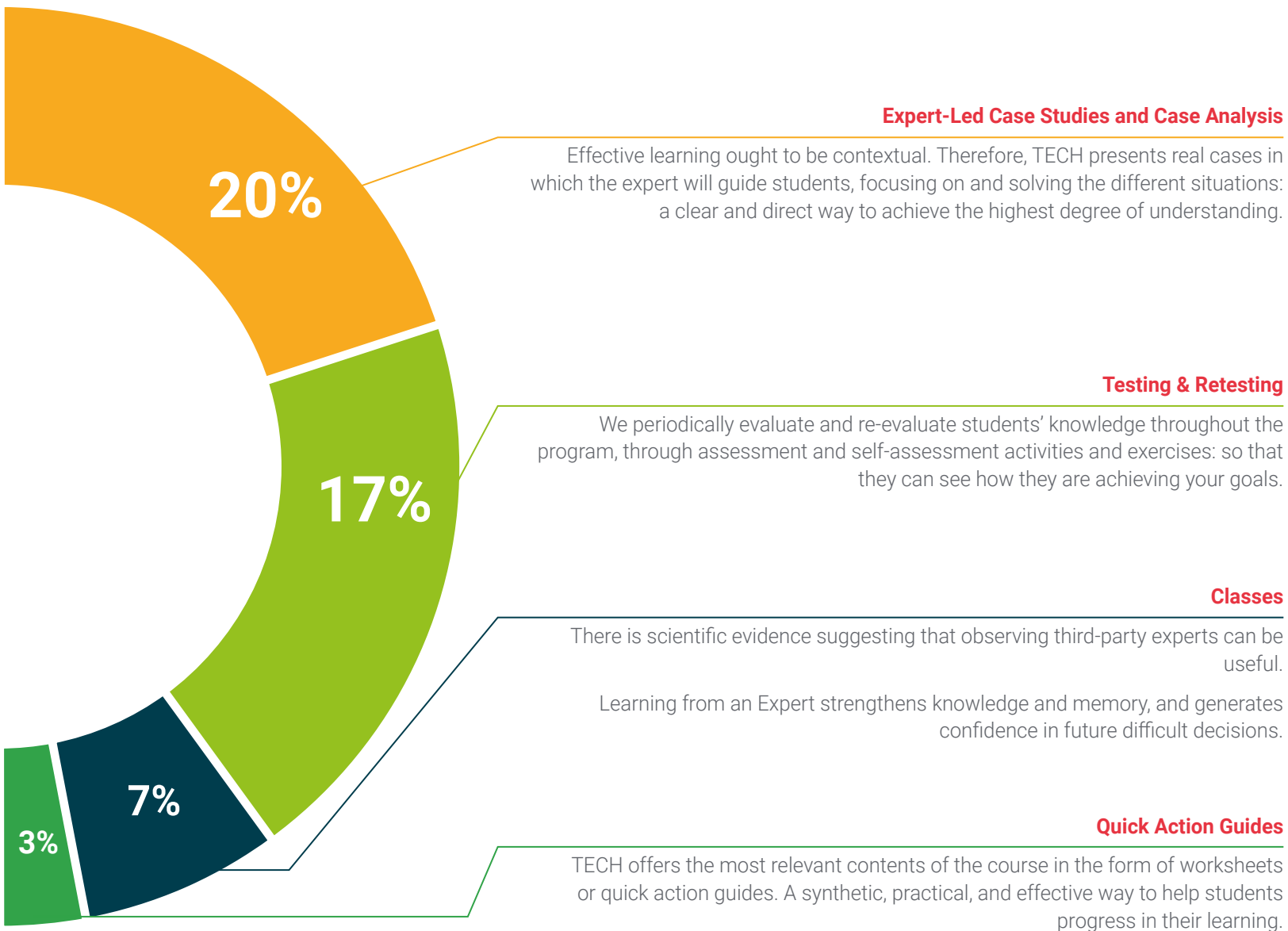
This exclusive multimedia content presentation training Exclusive system was awarded by Microsoft as a "European Success Story".



Additional Reading

Recent articles, consensus documents and international guidelines, among others. In TECH's virtual library, students will have access to everything they need to complete their course.





06

Certificate

This Postgraduate Certificate Psychopedagogical Counseling for Families at Psychosocial Risk guarantees students, in addition to the most rigorous and up-to-date education, access to a Postgraduate Certificate issued by TECH Global University.





Successfully complete this program and receive your university qualification without having to travel or fill out laborious paperwork"

This program will allow you to obtain your **Postgraduate Certificate Psychopedagogical Counseling for Families at Psychosocial Risk** endorsed by **TECH Global University**, the world's largest online university.

TECH Global University is an official European University publicly recognized by the Government of Andorra ([official bulletin](#)). Andorra is part of the European Higher Education Area (EHEA) since 2003. The EHEA is an initiative promoted by the European Union that aims to organize the international training framework and harmonize the higher education systems of the member countries of this space. The project promotes common values, the implementation of collaborative tools and strengthening its quality assurance mechanisms to enhance collaboration and mobility among students, researchers and academics.

This **TECH Global University** title is a European program of continuing education and professional updating that guarantees the acquisition of competencies in its area of knowledge, providing a high curricular value to the student who completes the program.

Title: **Postgraduate Certificate Psychopedagogical Counseling for Families at Psychosocial Risk**

Modality: **online**

Duration: **6 weeks**

Accreditation: **4 ECTS**





Postgraduate Certificate
Psychopedagogical Counseling
for Families at Psychosocial Risk

- » Modality: online
- » Duration: 6 weeks
- » Certificate: TECH Global University
- » Credits: 4 ECTS
- » Schedule: at your own pace
- » Exams: online

Postgraduate Certificate

Psychopedagogical Counseling for Families at Psychosocial Risk