

# Postgraduate Certificate Advanced Modeling in Rhino



## Postgraduate Certificate Advanced Modeling in Rhino

- » Modality: online
- » Duration: 6 weeks
- » Certificate: TECH Technological University
- » Dedication: 16h/week
- » Schedule: at your own pace
- » Exams: online

Website: [www.techtute.com/us/design/postgraduate-certificate/advanced-modeling-rhino](http://www.techtute.com/us/design/postgraduate-certificate/advanced-modeling-rhino)

# Index

01

Introduction

---

*p. 4*

02

Objectives

---

*p. 8*

03

Course Management

---

*p. 12*

04

Structure and Content

---

*p. 16*

05

Methodology

---

*p. 20*

06

Certificate

---

*p. 28*

# 01

# Introduction

Rhinoceros 3D is one of the best computer-aided design software. Through this program, designers can not only create and model, but also analyze and correct complex 3D figures. Under this context, this program has been designed to instruct the student in the use of this software. In this way and together with the quality contents that you will receive during the 6 weeks of study, you will become a complete 3D artist, perfecting your technique and positioning yourself as a reference in the sector. All this, thanks to a program that stands out for being 100% online and compatible with the student's professional and personal activity.





“

*Design is the perfect mix between science and art. You provide the creativity, and we give you the knowledge. Become an expert in Rhinoceros 3D”*



The Postgraduate Certificate in Advanced Modeling in Rhino is a program created for digital artists that seeks to convert basic and medium knowledge into advanced. The realization of designs in this software is having an unexpected boom in the market. This is because the mechanisms used in the 3D modeling process guarantee the highest quality. Therefore, practice in this program is paramount from the very beginning.

Throughout the program, the tools available in Rhino will be reviewed one by one. However, emphasis will be placed on the student acquiring mechanical modeling skills and learning how to perform analysis in order to develop strategies for approaching a project.

Also, acquiring skills in complex modeling allows students to be able to perform surface diagnostics and corrections. Therefore, they will no longer only be able to create, but also to value.

A person skilled in 3D modeling, specifically, professionals who are proficient in Rhino software are the perfect and competent candidate for the design field. By taking this program, they meet the needs of the market and position their resume among the best. In addition, by working with the innovative computer-aided design software, you increase your chances of joining the business sector of your choice, since nowadays having this academic experience is becoming an indispensable hiring requirement.

For this reason, TECH Technological University has assembled for this program a team of professionals with extensive experience in 3D modeling created from Rhino. In this way, students who decide to enroll will be able to adjust the pace of their studies, since the program can be taken completely online.

This **Postgraduate Certificate in Advanced Modeling in Rhino** contains the most complete and up-to-date educational program on the market. The most important features include:

- ◆ The development of case studies presented by experts in 3D modeling in Rhino
- ◆ The graphic, schematic, and practical contents with which they are created, provide practical information on the disciplines that are essential for professional practice
- ◆ Practical exercises where the self-assessment process can be carried out to improve learning
- ◆ Its special emphasis on innovative methodologies
- ◆ Theoretical lessons, questions to the expert, debate forums on controversial topics, and individual reflection assignments
- ◆ Content that is accessible from any fixed or portable device with an Internet connection



*Art cannot be taught, but techniques and the best tools can. That's why TECH Technological University offers you programs that will make you a better professional"*

“

*At TECH we want to help you create great projects with the management tools that Rhino offers you. Enroll in the program that will teach you how to use the world's most robust 3D development platform"*

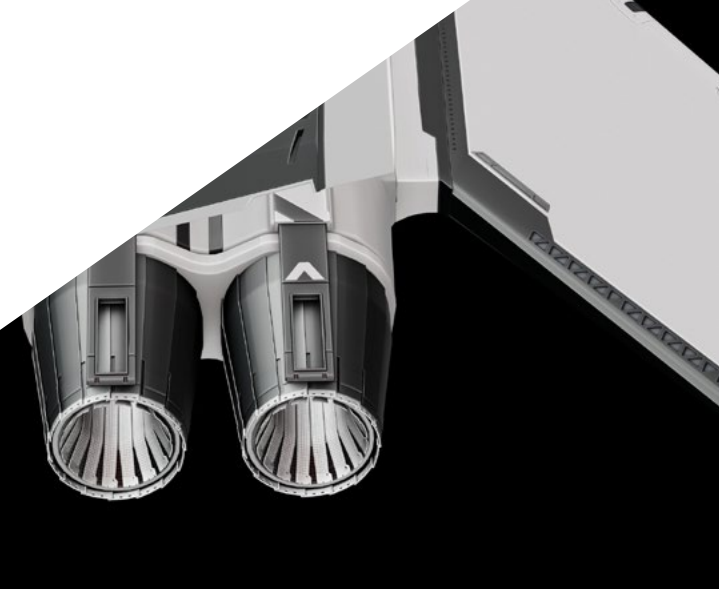
The program's teaching staff includes professionals from the fashion industry, who contribute with their work experience, as well as renowned specialists from leading companies and prestigious universities.

The multimedia content, developed with the latest educational technology, will provide the professional with situated and contextual learning, i.e., a simulated environment that will provide an immersive learning experience designed to prepare for real-life situations.

This program is designed around Problem-Based Learning, whereby the professional must try to solve the different professional practice situations that arise during the academic year. For this purpose, the professional will be assisted by an innovative interactive video system created by renowned and experienced experts.

*Grow professionally with TECH Technological University. This is your opportunity to increase your job prospects and expand your knowledge with qualified teachers in the field of design.*

*If you want to create high quality designs in all their phases, the Postgraduate Certificate in Advanced Modeling in Rhino is for you.*



# 02 Objectives

The objective of this program is to educate students on the tools offered by the world's most robust 3D development platform on the market. Thanks to its specialized tools for modeling, rendering, analysis and manufacturing in a wide variety of disciplines. Therefore, the professional will be able to obtain high quality designs that exceed the demands brought about by the advances in technology in the workplace.







“

*New technologies can continue to advance. At TECH Technological University we are prepared to teach all professionals, and, with Rhino 3D, this is no exception"*



## General Objectives

---

- ◆ Learn in depth and in an advanced way the 3D modeling through Rhino software
- ◆ Delve into the theory of shape creation to develop shape masters
- ◆ Learn in detail the techniques of Rhino software
- ◆ Generate designs for different industries and their application
- ◆ Be a technical expert and/or artist in Rhino software
- ◆ Know all the tools involved in the 3D modeling profession





## Specific Objectives

---

- ◆ Learn in depth about the application of techniques to advanced models
- ◆ Understand in detail how the component parts of an advanced model work
- ◆ Work with different parts of a complex model
- ◆ Acquire skills to sort a complex model
- ◆ Identify how the details fit

“

*This program fits your needs. Enroll and invest in your education and learning”*

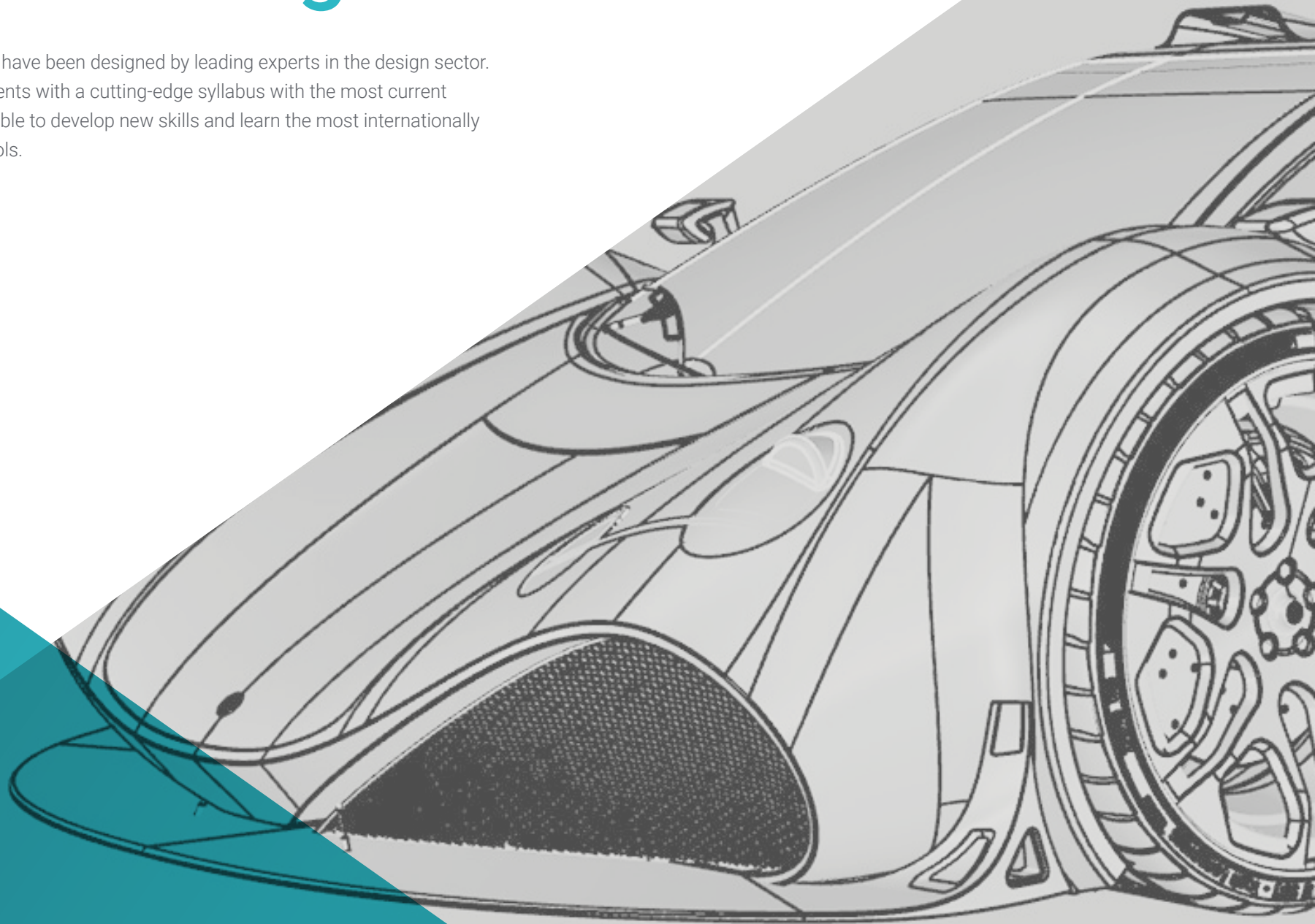


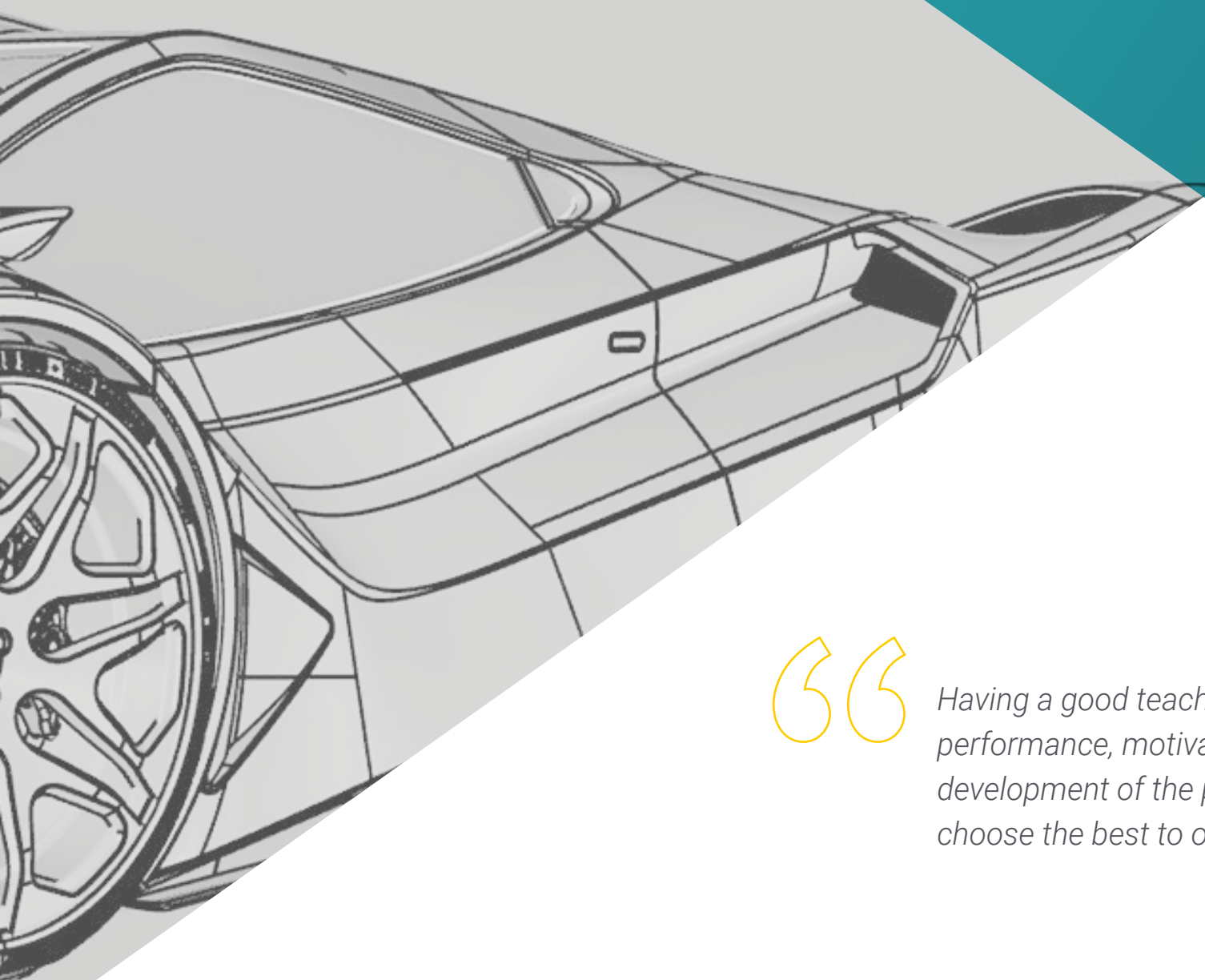


03

# Course Management

The contents of this program have been designed by leading experts in the design sector. Their expertise provides students with a cutting-edge syllabus with the most current knowledge. Students will be able to develop new skills and learn the most internationally demanded Rhino platform tools.





“

*Having a good teacher influences the performance, motivation and cognitive development of the professional. At TECH, we choose the best to offer you a quality education"*



## Management



### Mr. Salvo Bustos, Gabriel Agustín

- ♦ CEO at D- SAVE 3D services
- ♦ Experience in Aeronautical 3D Modeling
- ♦ 3D Artist at 3D VISUALIZATION SERVICE INC.
- ♦ 3D Production for Boston Whaler
- ♦ 3D Modeler at Shay Bonder Multimedia TV Production Company
- ♦ Audiovisual Producer at Digital Film
- ♦ Product Designer for Escencia de los Artesanos by Eliana M
- ♦ Industrial Designer Specializing in Products. National University of Cuyo
- ♦ Honorable Mention in the Mendoza Late Contest
- ♦ Exhibitor at the Regional Visual Arts Salon Vendimia.
- ♦ Digital Composition Seminar. National University of Cuyo
- ♦ National Congress of design and production. C.P.R.O.D.I



# 04

# Structure and Content

The syllabus provided will allow professionals to create and know how to fully use all the Rhino 3D software tools. Therefore, they will build different complex figures that will serve as a professional challenge to achieve the Postgraduate Certificate. 3D modeling, nowadays, is necessary and mandatory for every designer who wants to be competent in the market. The teachers at TECH Technological University have developed this syllabus with the intention of making the students the most skilled and gifted.





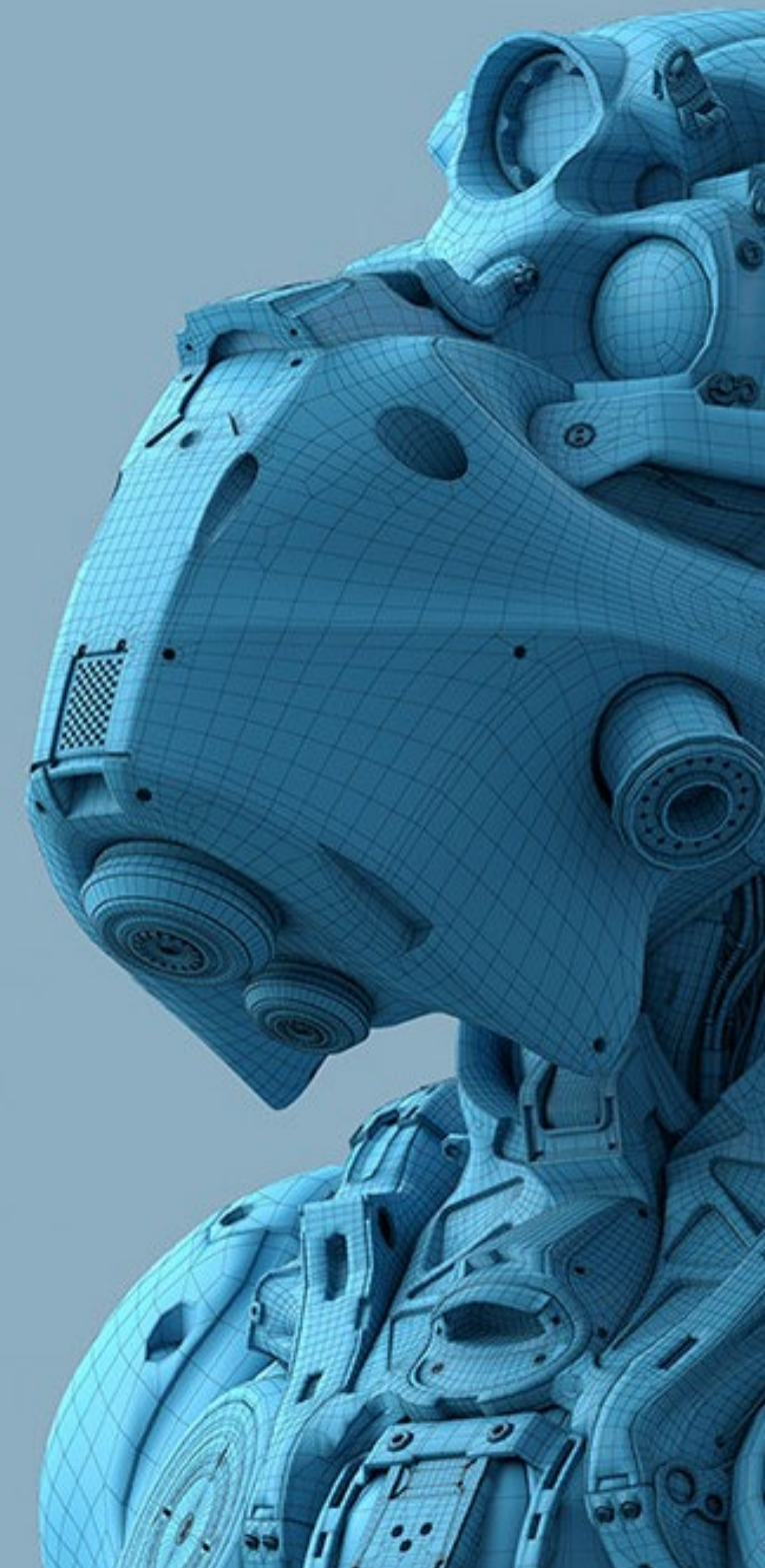


“

*Ingenuity is necessary, but knowing how to apply it well is indispensable. The syllabus at TECH Technological University adds value to your creativity and gives meaning to your life”*

## Module 1. Advanced Modeling in Rhino

- 1.1. Motorcycle Modeling
  - 1.1.1. Importing Reference Images
  - 1.1.2. Modeling of Rear Tire
  - 1.1.3. Modeling of Rear Rim
- 1.2. Mechanical Components of Rear Axle
  - 1.2.1. Creating the Braking System
  - 1.2.2. Building the Transmission Chain
  - 1.2.3. Modeling the Chain Cover
- 1.3. Engine Modeling
  - 1.3.1. Creation of the Body
  - 1.3.2. Adding Mechanical Elements
  - 1.3.3. Incorporating Technical Details
- 1.4. Modeling the Main Deck
  - 1.4.1. Modeling Curves and Surfaces
  - 1.4.2. Modeling the Deck
  - 1.4.3. Cutting the Frame
- 1.5. Modeling the Upper Area
  - 1.5.1. Building the Seat
  - 1.5.2. Creating Front End Details
  - 1.5.3. Creating Back End Details
- 1.6. Functional Parts
  - 1.6.1. Gasoline Tank
  - 1.6.2. Rear Lights
  - 1.6.3. Front Lights





- 1.7. Building the Front Axle I
  - 1.7.1. Brake System and Wheel Rim
  - 1.7.2. Fork
  - 1.7.3. Handlebar
- 1.8. Building the Front Axle II
  - 1.8.1. Grips
  - 1.8.2. Brake Cables
  - 1.8.3. Instruments
- 1.9. Adding Details
  - 1.9.1. Refining the Main Body
  - 1.9.2. Adding the Muffler
  - 1.9.3. Adding the Pedals
- 1.10. Final Components
  - 1.10.1. Modeling the Windshield
  - 1.10.2. Modeling the Support
  - 1.10.3. Final Details

“

*Invest in yourself, in your intelligence and in your creativity  
Now is the time to start a Postgraduate Certificate with  
TECH Technological University”*

# 05 Methodology

This academic program offers students a different way of learning. Our methodology uses a cyclical learning approach: **Relearning**.

This teaching system is used, for example, in the most prestigious medical schools in the world, and major publications such as the **New England Journal of Medicine** have considered it to be one of the most effective.



“

*Discover Relearning, a system that abandons conventional linear learning, to take you through cyclical teaching systems: a way of learning that has proven to be extremely effective, especially in subjects that require memorization"*

## Case Study to contextualize all content

Our program offers a revolutionary approach to developing skills and knowledge. Our goal is to strengthen skills in a changing, competitive, and highly demanding environment.

“

*At TECH, you will experience a learning methodology that is shaking the foundations of traditional universities around the world”*



*You will have access to a learning system based on repetition, with natural and progressive teaching throughout the entire syllabus.*





*The student will learn to solve complex situations in real business environments through collaborative activities and real cases.*

### A learning method that is different and innovative

This TECH program is an intensive educational program, created from scratch, which presents the most demanding challenges and decisions in this field, both nationally and internationally. This methodology promotes personal and professional growth, representing a significant step towards success. The case method, a technique that lays the foundation for this content, ensures that the most current economic, social and professional reality is taken into account.

“*Our program prepares you to face new challenges in uncertain environments and achieve success in your career”*

The case method is the most widely used learning system in the best faculties in the world. The case method was developed in 1912 so that law students would not only learn the law based on theoretical content. It consisted of presenting students with real-life, complex situations for them to make informed decisions and value judgments on how to resolve them. In 1924, Harvard adopted it as a standard teaching method.

What should a professional do in a given situation? This is the question we face in the case method, an action-oriented learning method. Throughout the program, the studies will be presented with multiple real cases. They will have to combine all their knowledge and research, and argue and defend their ideas and decisions.



## Relearning Methodology

TECH effectively combines the Case Study methodology with a 100% online learning system based on repetition, which combines 8 different teaching elements in each lesson.

We enhance the Case Study with the best 100% online teaching method: Relearning.

*In 2019, we obtained the best learning results of all online universities in the world.*

At TECH you will learn using a cutting-edge methodology designed to train the executives of the future. This method, at the forefront of international teaching, is called Relearning.

Our university is the only one in the world authorized to employ this successful method. In 2019, we managed to improve our students' overall satisfaction levels (teaching quality, quality of materials, course structure, objectives...) based on the best online university indicators.



In our program, learning is not a linear process, but rather a spiral (learn, unlearn, forget, and re-learn). Therefore, we combine each of these elements concentrically.

With this methodology we have trained more than 650,000 university graduates with unprecedented success in fields as diverse as biochemistry, genetics, surgery, international law, management skills, sports science, philosophy, law, engineering, journalism, history, markets, and financial instruments. All this in a highly demanding environment, where the students have a strong socio-economic profile and an average age of 43.5 years.

*Relearning will allow you to learn with less effort and better performance, involving you more in your training, developing a critical mindset, defending arguments, and contrasting opinions: a direct equation for success.*

From the latest scientific evidence in the field of neuroscience, not only do we know how to organize information, ideas, images and memories, but we know that the place and context where we have learned something is fundamental for us to be able to remember it and store it in the hippocampus, to retain it in our long-term memory.

In this way, and in what is called neurocognitive context-dependent e-learning, the different elements in our program are connected to the context where the individual carries out their professional activity.



This program offers the best educational material, prepared with professionals in mind:



### Study Material

All teaching material is produced by the specialists who teach the course, specifically for the course, so that the teaching content is highly specific and precise.

These contents are then applied to the audiovisual format, to create the TECH online working method. All this, with the latest techniques that offer high quality pieces in each and every one of the materials that are made available to the student.



### Classes

There is scientific evidence suggesting that observing third-party experts can be useful.

Learning from an Expert strengthens knowledge and memory, and generates confidence in future difficult decisions.



### Practising Skills and Abilities

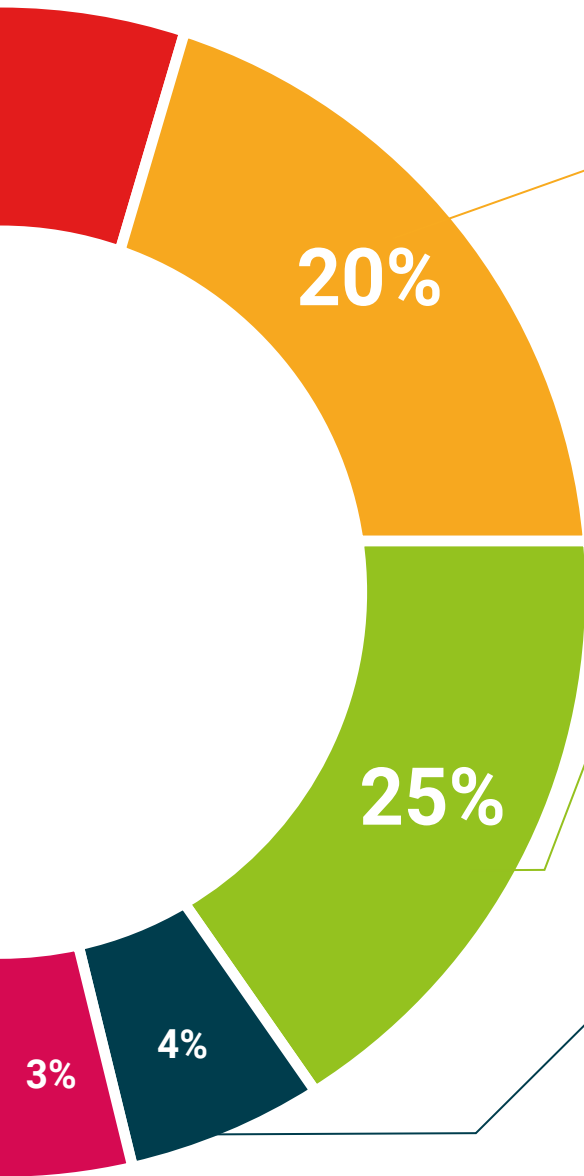
They will carry out activities to develop specific skills and abilities in each subject area. Exercises and activities to acquire and develop the skills and abilities that a specialist needs to develop in the context of the globalization that we are experiencing.



### Additional Reading

Recent articles, consensus documents and international guidelines, among others. In TECH's virtual library, students will have access to everything they need to complete their course.





#### Case Studies

Students will complete a selection of the best case studies chosen specifically for this program. Cases that are presented, analyzed, and supervised by the best specialists in the world.



#### Interactive Summaries

The TECH team presents the contents attractively and dynamically in multimedia lessons that include audio, videos, images, diagrams, and concept maps in order to reinforce knowledge.

This exclusive educational system for presenting multimedia content was awarded by Microsoft as a "European Success Story".



#### Testing & Retesting

We periodically evaluate and re-evaluate students' knowledge throughout the program, through assessment and self-assessment activities and exercises, so that they can see how they are achieving their goals.





# 06 Certificate

The Postgraduate Certificate in Advanced Modeling in Rhino guarantees students, in addition to the most rigorous and up-to-date education, access to a Postgraduate Certificate issued by TECH Technological University.





“

*Successfully complete this program and receive your university qualification without having to travel or fill out laborious paperwork”*

This **Postgraduate Certificate in Advanced Modeling Rhino** contains the most complete and up-to-date program on the market.

Successfully complete this program and receive your university qualification without having to travel or fill out laborious paperwork **Postgraduate Certificate** issued by **TECH Technology University** via tracked delivery\*.

The diploma issued by **TECH Technological University** will reflect the qualification obtained in the Postgraduate Certificate, and meets the requirements commonly demanded by labor exchanges, competitive examinations and professional career evaluation committees.

Title: **Postgraduate Certificate in Advanced Modeling in Rhino**

Official N° of hours: **150 h.**



\*Apostille Convention. In the event that the student wishes to have their paper diploma issued with an apostille, TECH EDUCATION will make the necessary arrangements to obtain it, at an additional cost.



## Postgraduate Certificate Advanced Modeling in Rhino

- » Modality: online
- » Duration: 6 weeks
- » Certificate: TECH Technological University
- » Dedication: 16h/week
- » Schedule: at your own pace
- » Exams: online

# Postgraduate Certificate Advance Modeling in Rhino

