

# Postgraduate Certificate

## Fixed Dental Prosthesis





## Postgraduate Certificate Fixed Dental Prosthesis

- » Modality: online
- » Duration: 6 weeks
- » Certificate: TECH Technological University
- » Dedication: 16h/week
- » Schedule: at your own pace
- » Exams: online

Website: [www.techtute.com/us/dentistry/postgraduate-certificate/fixed-dental-prosthesis](http://www.techtute.com/us/dentistry/postgraduate-certificate/fixed-dental-prosthesis)

# Index

01

Introduction

---

*p. 4*

02

Objectives

---

*p. 8*

03

Course Management

---

*p. 12*

04

Structure and Content

---

*p. 16*

05

Methodology

---

*p. 20*

06

Certificate

---

*p. 28*

# 01

# Introduction

In the quest for excellent oral health and more esthetic teeth, the demand for Fixed Dental Prostheses has increased in recent years. Patients are looking for dental solutions that adapt naturally to their anatomy, which has led to an increasingly personalized approach in the design and production of these pieces. For this reason, it is becoming increasingly necessary to have professionals with specialized knowledge in this field and this TECH program seeks to meet this request. Through a complete syllabus and 100% online, it will train professionals who want to be experts in this field and study from the comfort of their home.





““

*This is the best Postgraduate Certificate for those professionals who wish to achieve success in the field of Prosthetics. Enroll now”*

With the advancement of modern dentistry and the constant changes in the techniques used in this area, it is essential to have specialists who are updated, which contribute their knowledge and integrate their skills to provide Dental Prostheses skills and offer the best treatment to their patients. This is why, with this Postgraduate Certificate, students will be able to improve their skills in this field and have the necessary competencies to face the demands of this sector.

In this way, the syllabus of this academic program will allow participants to acquire knowledge in the different preparations of teeth for fixed restorations and their specific indications. In addition, we will delve into the concept and types of inlays in Fixed prosthesis, as well as in the restoration of endodontic teeth with these devices, with the objective of permeating the professional with the most used tools in this field.

With this, professionals will be able to specialize in depth in this field and offer a high quality clinical service, which will be based on the appropriate analysis to know what type of piece the patient needs and also provide a treatment that generates oral wellness.

This program is taught through the innovative Relearning methodology, which allows 100% online learning, giving students the flexibility to study from anywhere and on their own schedule. Likewise, they will have 24-hour access to multimedia resources to assimilate the contents at their own pace. In addition, through the analysis of case studies, participants will develop problem-solving skills by facing realistic simulated situations.

This **Postgraduate Certificate in Fixed Dental Prosthesis** contains the most complete and up-to-date scientific program on the market. The most important features include:

- ♦ The development of practical cases presented by experts in Fixed Dental Prosthesis
- ♦ The graphic, schematic, and practical contents with which they are created, provide scientific and practical information on the disciplines that are essential for professional practice
- ♦ Practical exercises where self-assessment can be used to improve learning
- ♦ Its special emphasis on innovative methodologies
- ♦ Theoretical lessons, questions to the expert, debate forums on controversial topics, and individual reflection assignments
- ♦ Content that is accessible from any fixed or portable device with an Internet connection



*A Postgraduate Certificate that will lead you to excel in the field of dentistry and grow professionally"*

“

*You will expand your dental skills and master the most innovative techniques in this field"*

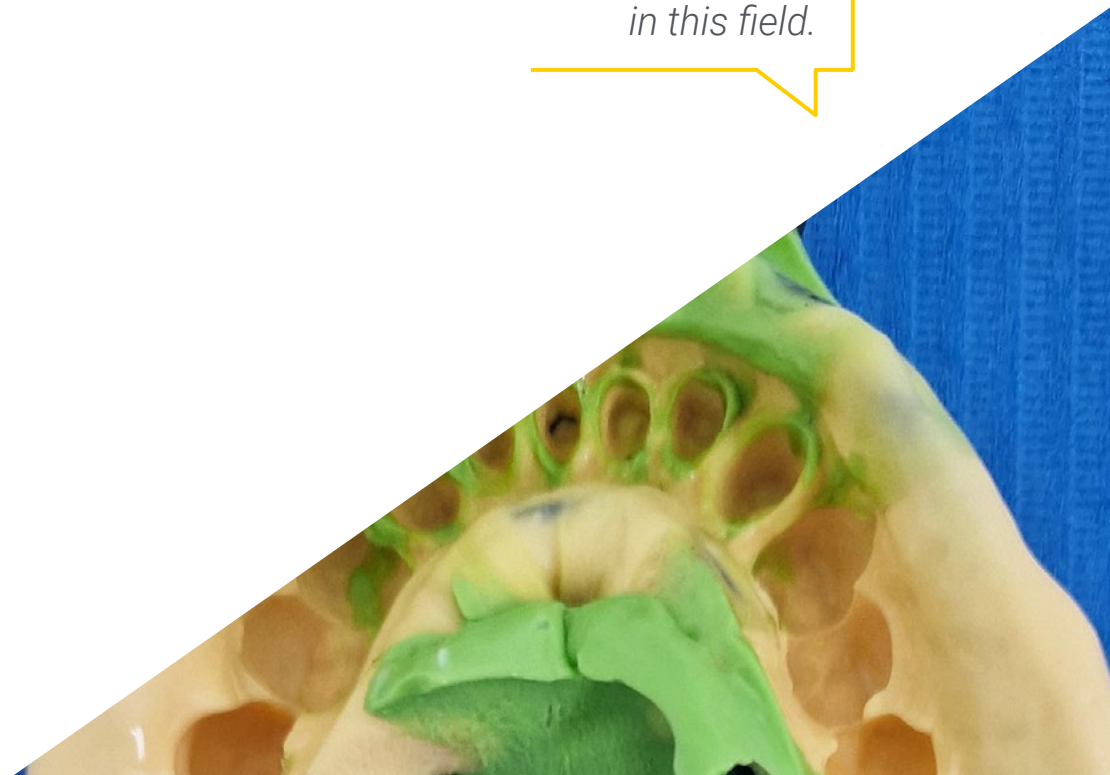
The program includes in its teaching staff professionals from the sector who bring to this program the experience of their work, as well as recognized specialists from leading societies and prestigious universities.

Its multimedia content, developed with the latest educational technology, will provide the professional with situated and contextual learning, i.e., a simulated environment that will provide an immersive education programmed to learn in real situations.

The design of this program focuses on Problem-Based Learning, by means of which the professional must try to solve the different professional practice situations that are presented throughout the academic course. For this purpose, the student will be assisted by an innovative interactive video system created by renowned experts.

*Learn at your own pace with the best methodology in the market: Relearning.*

*You will expand your dental skills and master the most innovative techniques in this field.*



# 02

## Objectives

The educational program focuses on providing students with the latest developments in dentistry, with special Attention to the most effective procedures for the production of Fixed Dental Prostheses. In this way, participants will obtain the necessary tools to master the most up-to-date design techniques, which will enable them to provide quality care to patients requiring this type of treatment. In addition, the use of multimedia resources in the studio will strengthen students' skills in this field, ensuring complete and up-to-date training.







“

*Enhance your skills in the handling of the most current techniques for the application of Fixed Dental Prostheses, thanks to this program"*



## General Objectives

---

- To sediment your knowledge in anatomy, physiology and orofacial pathology to be able to make accurate diagnoses and design adequate treatment plans
- To develop skills in performing clinical examinations and interpreting data for an accurate diagnosis and an optimal treatment plan
- To update knowledge in the use of dental materials, clinical and laboratory techniques in the design of prostheses with high physiological and aesthetic performance
- To acquire knowledge in the prevention and treatment of complications related to dental prosthetics and occlusion
- To understand the importance of interdisciplinary collaboration for the achievement of ideal results
- To have an in-depth knowledge of the latest clinical and digital trends in the field of oral rehabilitation





## Specific Objectives

---

- To delve into the different tooth preparations for fixed restorations, including the previous restorations for each type of preparation and their indications
- To delve into inlays in fixed prosthesis, the physical principles that should govern these preparations and their corresponding restorations, as well as the indications and contraindications of each type of preparation
- To approach the restoration of the endodontic tooth with fixed prosthesis, the concept of provisional crown, its design and preparation according to the case.
- To strengthen the concept of gingival retraction, the principles that govern it, the indications and contraindications, as well as the procedures for its realization.
- To analyze the BOPT technique and cementation in fixed and provisional restorations



*Learn at your own pace and online, with 24-hour access to multimedia resources"*

03

# Course Management

TECH has assembled a prestigious teaching staff, made up of recognized experts in dentistry, with the intention of providing excellent training to the participants of this Postgraduate Certificate. In this way, professionals who enroll in this program will have the opportunity to access an advanced syllabus created by a specialized team with extensive knowledge in technical procedures for the complete design of Fixed Dental Prostheses.





“

*The outstanding teachers will guide you in mastering the latest techniques and materials to achieve great proficiency in this area"*

## Management



### Dr. Visiedo Corvillo, Rosabel

- ◆ Executive CEO of the OI TECH implant house
- ◆ Consultant for prosthetic attachments for the international manufacturer of dental implants AVENIR S.R.L
- ◆ Degree in Dentistry, International University of Catalonia
- ◆ Master in Occlusion and Implant Prosthesis by the Superior School of Implantology and Oral Rehabilitation



### Dr. Dueñas Carrillo, Alfredo L

- ◆ Research and development CEO of the OI TECH implant house
- ◆ Consultant of the Company for the international manufacturer of dental implants AVENIR S.R.L.
- ◆ Own dental practice. GABIDENT Cardedeu in Barcelona
- ◆ Teaching Instructor of the Department of Oral and Maxillofacial Surgery of the Faculty of Dentistry of the University of Havana
- ◆ First Degree Specialist in Oral and Maxillofacial Surgery at the University of Havana
- ◆ Master's Degree in Implantology by the University of la Florida,
- ◆ Member of: Spanish Society of Oral Surgery and Implantology, Committee of experts of the OXTEIN implant house



## Professors

### Dr. Pizarro Sanceledonio, Helena

- ◆ Specialist's Degree in Oral Implantology and Rehabilitation
- ◆ Degree in Dentistry, International University of Catalonia
- ◆ Postgraduate Course in Advanced Orthodontics and Occlusion by Ladent Formacion
- ◆ Master's Degree in Implantology and Oral Rehabilitation, University of Barcelona
- ◆ Postgraduate degree in Prosthetics and Oral Rehabilitation by the Catalan Society of Oodontostomatology (CSO)

# 04

## Structure and Content

The contents of the syllabus of this Postgraduate Certificate have been elaborated by recognized experts in dentistry, with the aim of providing students with top level training. In this program, participants will have the opportunity to be updated in the most effective techniques for the realization of Fixed Dental Prosthesis. This will be achieved through the take of of multimedia resources and the analysis of practical cases, which will allow students to develop outstanding professional skills in this field.







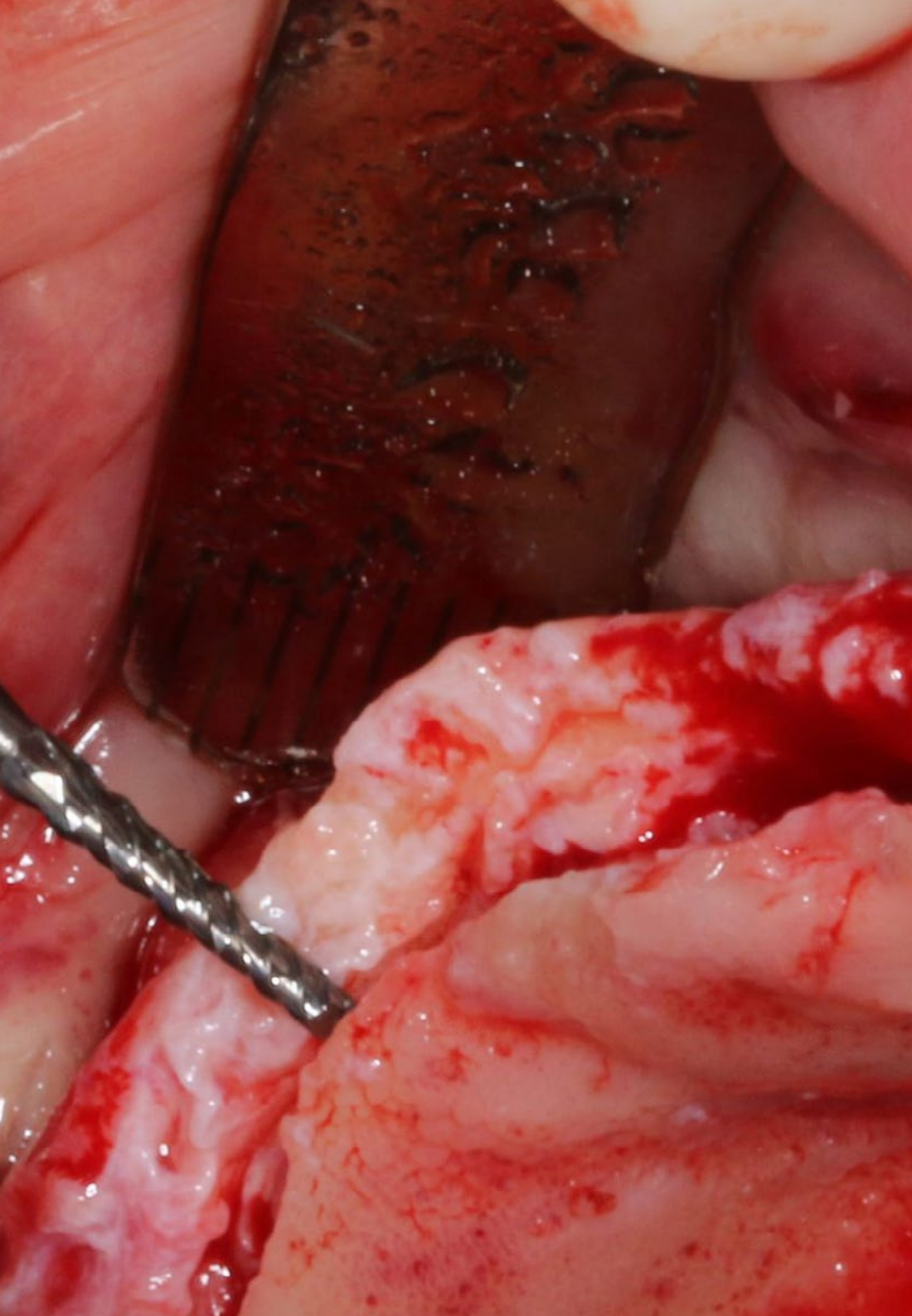
“

*Strengthen your ability to design aesthetic and functional Fixed Dental Prostheses in this academic program”*

## Module 1. Fixed prosthesis

- 1.1. Various Tooth Preparations for Fixed Restorations
  - 1.1.1. Total Crown Preparation: Technique and Requirements for its Use
  - 1.1.2. Partial Crown Preparation: Indications and Advantages
  - 1.1.3. Preparation of Dental Veneers: Techniques and Materials Used
- 1.2. Preliminary Restorations for Each of the Preparations and their Indications
  - 1.2.1. Inlays and Onlays: Indications and Differences between the Two Types of Restorations
  - 1.2.2. Dental Bridges: Types and Materials Used in their Fabrication
  - 1.2.3. Dental Crowns: Materials and Fabrication Techniques
- 1.3. Inlays in Fixed Prosthesis: Concept and Types
  - 1.3.1. Ceramic Inlays: Advantages and Disadvantages
  - 1.3.2. Metal Inlays: Materials Used and Processing Techniques
  - 1.3.3. Composite Inlays: Indications and Contraindications
- 1.4. Restoration of the Endodontic Tooth with Fixed Prosthesis
  - 1.4.1. Preparation and Design of Restorations for Endodontic Teeth
  - 1.4.2. Use of Intraradicular Posts in the Restoration of Endodontic Teeth
  - 1.4.3. Techniques for the Selection of Restorative Materials in Endodontic Teeth
- 1.5. Physical Principles that should Govern these Preparations and their Corresponding Restorations
  - 1.5.1. Dental Adhesion: Techniques and Materials Used
  - 1.5.2. Dental Aesthetics: Factors to be Taken into Account in Aesthetic Restorations
  - 1.5.3. Dental Occlusion: Importance of Occlusion in Dental Preparation and Restoration
- 1.6. Indications and Contraindications for Each Type of Preparation
  - 1.6.1. Indications and Contraindications of Dental Crowns
  - 1.6.2. Indications and Contraindications of Dental Veneers
  - 1.6.3. Indications and Contraindications for Bridges on Teeth





- 1.7. Temporary Crown Design and Preparation According to the Case
  - 1.7.1. Importance of the Temporary Crown in Dental Preparation and Restoration
  - 1.7.2. Design and Materials Used in the Preparation of Temporary Crowns
  - 1.7.3. Techniques for the Preparation of the Temporary Crown
- 1.8. Gingival Retraction, Principles that Govern It, Indications and Contraindications Procedures for its Realization
  - 1.8.1. Importance of Gingival Retraction in Dental Preparation and Restoration
  - 1.8.2. Techniques for Gingival Retraction: Chemical and Mechanical
  - 1.8.3. Indications and Contraindications of Gingival Retraction
- 1.9. Cementation of Fixed and Temporary Restoration
  - 1.9.1. Types of Cements Used in Fixed and Temporary Restoration
  - 1.9.2. Techniques for the Cementation of Fixed and Temporary Restoration
  - 1.9.3. Important Considerations for the Cementation of Fixed and Temporary Restoration
- 1.10. Carving for BOPT Technique
  - 1.10.1. Concept of BOPT Technique in Dental Preparation and Restoration
  - 1.10.2. Techniques for Dental Carving in the BOPT Technique
  - 1.10.3. Advantages and Disadvantages of the BOPT Technique in Dental Preparation and Restoration

“ *Be the best specialist in the implantation of Fixed Dental Prostheses and guarantee your patients a quality treatment*”

# 05

# Methodology

This academic program offers students a different way of learning. Our methodology uses a cyclical learning approach: **Relearning**.

This teaching system is used, for example, in the most prestigious medical schools in the world, and major publications such as the **New England Journal of Medicine** have considered it to be one of the most effective.





“

*Discover Relearning, a system that abandons conventional linear learning, to take you through cyclical teaching systems: a way of learning that has proven to be extremely effective, especially in subjects that require memorization"*

## At TECH we use the Case Method

In a given situation, what should a professional do? Throughout the program, students will face multiple simulated clinical cases, based on real patients, in which they will have to do research, establish hypotheses, and ultimately resolve the situation. There is an abundance of scientific evidence on the effectiveness of the method. Specialists learn better, faster, and more sustainably over time.

*With TECH you will experience a way of learning that is shaking the foundations of traditional universities around the world.*



According to Dr. Gervas, the clinical case is the annotated presentation of a patient, or group of patients, which becomes a "case", an example or model that illustrates some peculiar clinical component, either because of its teaching power or because of its uniqueness or rarity. It is essential that the case is based on current professional life, trying to recreate the real conditions in the dentist's professional practice.

“

*Did you know that this method was developed in 1912, at Harvard, for law students? The case method consisted of presenting students with real-life, complex situations for them to make decisions and justify their decisions on how to solve them. In 1924, Harvard adopted it as a standard teaching method”*

The effectiveness of the method is justified by four fundamental achievements:

1. Dentists who follow this method not only grasp concepts, but also develop their mental capacity by means of exercises to evaluate real situations and apply their knowledge.
2. Learning is solidly translated into practical skills that allow the student to better integrate into the real world.
3. Ideas and concepts are understood more efficiently, given that the example situations are based on real-life.
4. Students like to feel that the effort they put into their studies is worthwhile. This then translates into a greater interest in learning and more time dedicated to working on the course.



## Relearning Methodology

At TECH we enhance the case method with the best 100% online teaching methodology available: Relearning.

This university is the first in the world to combine the study of clinical cases with a 100% online learning system based on repetition, combining a minimum of 8 different elements in each lesson, a real revolution with respect to the mere study and analysis of cases.

*The student will learn through real cases and by solving complex situations in simulated learning environments. These simulations are developed using state-of-the-art software to facilitate immersive learning.*





At the forefront of world teaching, the Relearning method has managed to improve the overall satisfaction levels of professionals who complete their studies, with respect to the quality indicators of the best online university (Columbia University).

With this methodology we have trained more than 115,000 dentists with unprecedented success, in all specialties regardless of the workload. Our pedagogical methodology is developed in a highly competitive environment, with a university student body with a strong socioeconomic profile and an average age of 43.5 years old.

*Relearning will allow you to learn with less effort and better performance, involving you more in your training, developing a critical mindset, defending arguments, and contrasting opinions: a direct equation for success.*

In our program, learning is not a linear process, but rather a spiral (learn, unlearn, forget, and re-learn). Therefore, we combine each of these elements concentrically.

The overall score obtained by TECH's learning system is 8.01, according to the highest international standards.



This program offers the best educational material, prepared with professionals in mind:



### Study Material

All teaching material is produced by the specialists who teach the course, specifically for the course, so that the teaching content is highly specific and precise.

These contents are then applied to the audiovisual format, to create the TECH online working method. All this, with the latest techniques that offer high quality pieces in each and every one of the materials that are made available to the student.



### Educational Techniques and Procedures on Video

TECH introduces students to the latest techniques, the latest educational advances, and to the forefront of medical techniques. All of this in direct contact with students and explained in detail so as to aid their assimilation and understanding. And best of all, you can watch the videos as many times as you like.



### Interactive Summaries

The TECH team presents the contents attractively and dynamically in multimedia lessons that include audio, videos, images, diagrams, and concept maps in order to reinforce knowledge.

This exclusive educational system for presenting multimedia content was awarded by Microsoft as a "European Success Story".



### Additional Reading

Recent articles, consensus documents and international guidelines, among others. In TECH's virtual library, students will have access to everything they need to complete their course.





#### Expert-Led Case Studies and Case Analysis

Effective learning ought to be contextual. Therefore, TECH presents real cases in which the expert will guide students, focusing on and solving the different situations: a clear and direct way to achieve the highest degree of understanding.



#### Testing & Retesting

We periodically evaluate and re-evaluate students' knowledge throughout the program, through assessment and self-assessment activities and exercises, so that they can see how they are achieving their goals.



#### Classes

There is scientific evidence suggesting that observing third-party experts can be useful.  
Learning from an Expert strengthens knowledge and memory, and generates confidence in future difficult decisions.



#### Quick Action Guides

TECH offers the most relevant contents of the course in the form of worksheets or quick action guides. A synthetic, practical, and effective way to help students progress in their learning.



# 06 Certificate

The Postgraduate Certificate in Fixed Dental Prosthesis guarantees students, in addition to the most rigorous and up-to-date education, access to a Postgraduate Certificate issued by TECH Technological University.



“

*Successfully complete this program and receive your university qualification without having to travel or fill out laborious paperwork”*

This **Postgraduate Certificate in Fixed Dental Prosthesis** contains the most complete and up-to-date scientific program on the market.

After the student has passed the assessments, they will receive their corresponding **Postgraduate Certificate** issued by **TECH Technological University** via tracked delivery\*.

The diploma issued by **TECH Technological University** will reflect the qualification obtained in the Postgraduate Certificate, and meets the requirements commonly demanded by labor exchanges, competitive examinations, and professional career evaluation committees.

Title: **Postgraduate Certificate in Fixed Dental Prosthesis**

Official N.º of Hours: **150 h.**



\*Apostille Convention. In the event that the student wishes to have their paper diploma issued with an apostille, TECH EDUCATION will make the necessary arrangements to obtain it, at an additional cost.



## Postgraduate Certificate Fixed Dental Prosthesis

- » Modality: online
- » Duration: 6 weeks
- » Certificate: TECH Technological University
- » Dedication: 16h/week
- » Schedule: at your own pace
- » Exams: online

# Postgraduate Certificate Fixed Dental Prosthesis

