

# Internship Program

## Dentofacial Orthopedics



tech



**tech**

Internship Program  
Dentofacial Orthopedics

# Index

01

Introduction

---

*p. 4*

02

Why Study an  
Internship Program?

---

*p. 6*

03

Objectives

---

*p. 8*

04

Educational Plan

---

*p. 10*

05

Where Can I Do the  
Internship Program?

---

*p. 12*

06

General Conditions

---

*p. 16*

07

Certificate

---

*p. 18*

# 01 Introduction

A growing awareness of oral health has led to more and more parents being concerned about their children's dentofacial condition, as well as an increasing number of adults paying more attention to oral health and opting for integrated orthodontic treatment. For this reason, TECH has developed this program, which aims to offer the dentist an in-depth study of the latest techniques in correcting or modifying skeletal patterns. Thus, in a period of 3 weeks, the specialists will be integrated into a highly prestigious clinic with a team of experts in order to address the latest procedures in Dentofacial Orthopedics.

“

*A different, unique and effective experience that will incorporate the most relevant advances in the area of Dentofacial Orthopedics into your daily profession”*





The emerging need of society to take care of its oral health has determined certain technological advances in the field of dentistry, with the aim of obtaining faster and more effective results. Orthopedics, specifically, is the solution to many existing dental problems, since its purpose is to treat all malocclusions caused by an alteration in the growth of the jaw bones. In this way, thanks to the use of appliances that allow bone movement, pathologies such as the width or length of the jaws are corrected, a better dental eruption is favored, sucking habits are corrected or possible facial asymmetries are modified, among other issues. For this reason, the medical practice in this discipline must be carried out in an exhaustive and detailed manner, which will make it easier to deal with any case regardless of the particularity of the patient. Under this premise, TECH has designed a program that includes a 120-hour stay in a leading dental clinic in the field of Dentofacial Orthopedics.

Thus, the dentists will be able to give a boost to their professional career, obtaining knowledge, skills, attitudes, values and competencies that will enable them to serve society by satisfying its health demands. All this, both in prevention and in diagnosis and treatment, always under the umbrella of ethics, efficiency and patient safety. In this way, it will not only keep abreast of the most effective medical strategies, but will also raise its clinical talent to the highest level, increasing its human and empathetic quality.

During the stay, you will have the support of an assistant tutor, who will be in charge of ensuring that all the requirements for which this Internship Program has been designed are met. Thus, the specialists will acquire with total comfort and security the approach to Dentofacial Orthopedics, understanding and applying the latest developments in techniques and procedures. In this way, during 3 weeks of practice, the professionals will be able to integrate immediately and in their own daily work all the knowledge they acquire at the end of the program.

# 02

## Why Study this Internship Program?

In the medical field, specialists must always strive to renew their knowledge and skills in order to keep up to date with the latest scientific advances and offer the best services to their patients. For this reason, TECH offers a unique and disruptive academic product, which provides a set of practical tools to deepen the latest procedures on Dentofacial Orthopedics. Thus, during 3 intensive weeks, the dentists will be integrated into a clinical environment with a multidisciplinary team, where they will learn first-hand the latest developments in this area and how to apply them to their daily work. This is, therefore, a unique academic opportunity that places the specialist at the center to offer you real learning adapted to your needs.



*Get into real clinical environments and delve into the latest advances in Dentofacial Orthopedics. An opportunity that only TECH can offer you"*

### 1. Updating from the latest technology available

In recent years, dentistry has undergone numerous technological advances with the aim of perfecting its procedures in order to offer patients faster and more efficient services. Under this premise, and in order for the professionals to learn about this technology, TECH develops this Internship Program with which the dentists will enter a real clinical environment of the latest generation in the field of Dentofacial Orthopedics.

### 2. Gaining In-Depth Knowledge from the Experience of Top Specialists

The team of experts that will accompany the specialists throughout their practical training stands out for its high professional experience, which is a guarantee and prestige. In addition, the dentists will have a specifically designated tutor, which will allow them to see real patients and incorporate the most effective techniques and procedures in Dentofacial Orthopedics into their daily practice.

### 3. Entering First-Class Clinical Environments

In order to offer students the best possible quality, TECH carefully selects all the centers available for Internship Programs. In this way, the professionals will have guaranteed access to a prestigious clinical center in the specialty of Dentofacial Orthopedics. In this way, you will manage the day-to-day work in a demanding area, always applying the latest scientific formulas in your own clinical practice.



#### **4. Putting the acquired knowledge into daily practice from the very first moment**

TECH has developed a new learning model with the aim of ensuring the student's compatibility with their personal responsibilities. In this way, the dentists can enjoy a 100% practical qualification, which allows them to get to grips with the latest techniques in Dentofacial Orthopedics, being able to put everything they have learned into professional practice in just 3 weeks.

#### **5. Expanding the Boundaries of Knowledge**

This Internship Program offers the possibility to spend time in both national and international centers. In this way, the frontiers are opened for the professionals, who will be able to acquire knowledge from the best specialists who not only practice in first class centers, but who are located in different continents. A unique opportunity that only TECH, the largest digital university in the world, could offer.



*You will have full practical immersion  
at the center of your choice”*

# 03

## Objectives

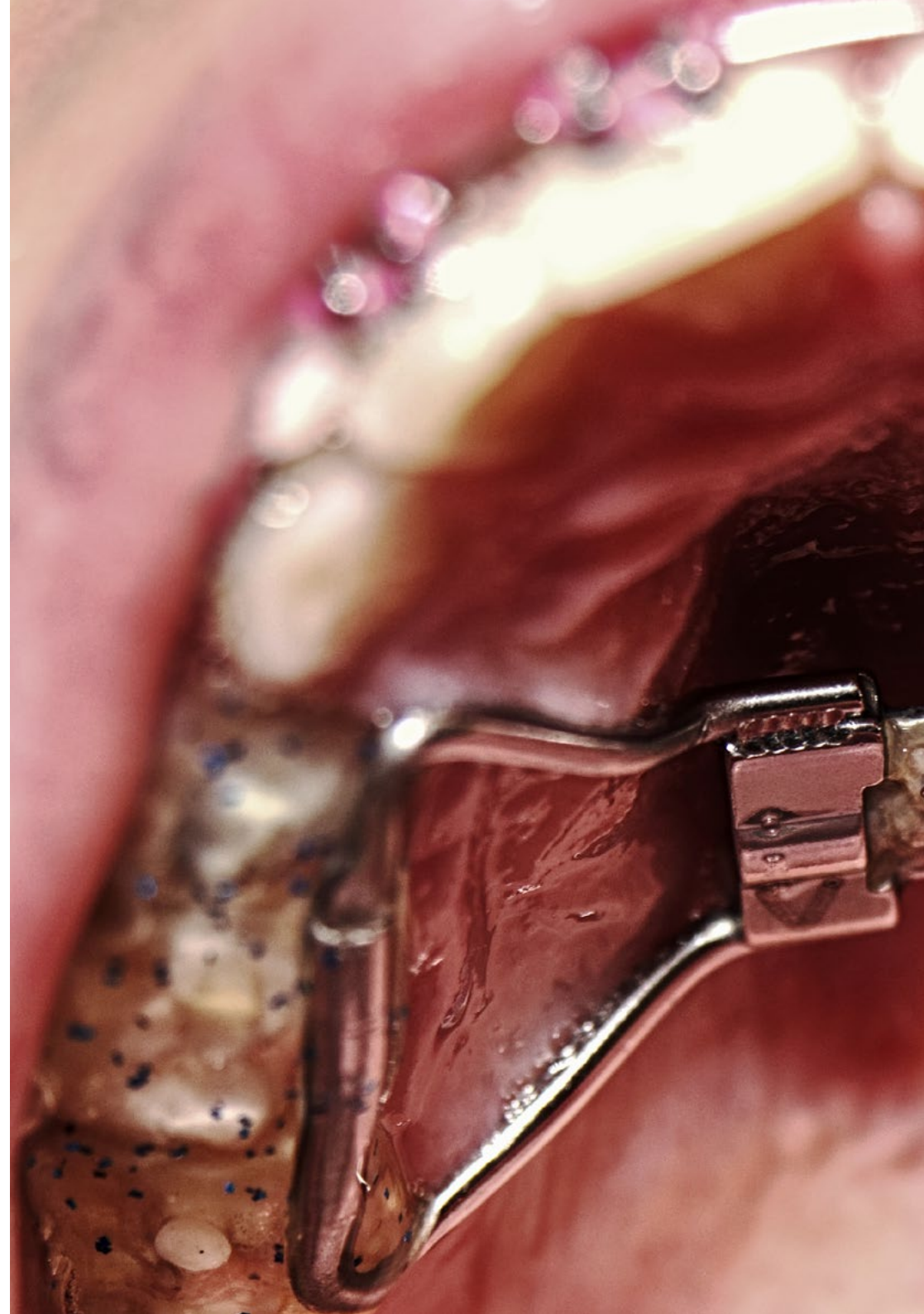
The objective is to help the professionals identify and associate their knowledge with their corresponding image, bringing the dentist closer to those situations that will be presented daily in the dental office, so that they are able to focus and manage them in a coordinated, efficient and planned manner. In this way, you will refine your personal safety and decision making when practicing as a dentist and will place special emphasis on the diagnostic and preventive aspect, differentiating by specific characteristics the different types of lesions.



### General Objectives

---

- ◆ Learn about the latest advances in Dentofacial Orthopedics, with emphasis on the diagnosis and treatment of the different existing pathologies
- ◆ Incorporate the latest techniques in fixed or removable appliances into daily work
- ◆ Deepen in the alterations that require treatment, as well as analyze the different therapeutic objectives according to the age of the patient







## Specific Objectives

---

- ◆ Know how to apply acquired knowledge and problem-solving skills in new or unfamiliar environments with a multidisciplinary approach within broader contexts related to health sciences
- ◆ Check structural and radiological anatomical knowledge, as well as the practical considerations that students should apply in the diagnosis, prognosis and therapeutic planning of orthodontic patients
- ◆ Update the diagnostic imaging of human anatomy and especially in the area of dentistry, becoming familiar with the various existing imaging techniques and their indications and limitations
- ◆ Diagnose, classify and treat dental malocclusions caused by osseo-dental discrepancy
- ◆ Identify disorders that require treatment, as well as the ideal age to treat each type: Determine the specific therapeutic objectives of each treatment
- ◆ Take medical histories, examine patients and take records
- ◆ Identify the different malocclusive syndromes and craniofacial deformities, as well as the functional alterations of the stomatognathic system that accompany morphological alterations
- ◆ Incorporate the opening and recording of the clinical history and routine examination into daily practice, as well as requesting and interpreting complementary examinations used in the integral diagnosis of the patient
- ◆ Develop competences in the search and organization of documentation, and in presenting and communicating their work adequately to the scientific community

# 04

## Educational Plan

This Internship Program in Dentofacial Orthopedics for dentists consists of a practical and face-to-face stay of 3 weeks in a prestigious clinical center. The shifts are 8 consecutive hours from Monday to Friday with an assistant specialist. During this period, the professionals will not only have at their disposal the technological and sanitary equipment of the clinical itself, but will also be able to meet real patients accompanied by leading specialists in this medical area.

In this training proposal, completely practical in nature, the activities are aimed at the development and improvement of the skills necessary for the provision of clinical services in the area of Dentofacial Orthopedics, and are oriented to the specific training for the exercise of professional activity, in an environment of safety for the patient and high professional performance.

This is undoubtedly an opportunity to learn by working in the most renowned clinical centers in the sector. In this sense, it is a new way of understanding the integration of health procedures, making this learning model an innovative experience for the improvement of professional skills.

The practical education will be performed with the active participation of the student performing the activities and procedures of each area of competence (learning to learn and learning to do), with the accompaniment and guidance of teachers and other fellow trainees that facilitate teamwork and multidisciplinary integration as transversal competencies for the praxis of Dentofacial Orthopedics (learning to be and learning to relate).

The procedures described below will form the basis of the practical part of the training, and their implementation is subject to both the suitability of the patients and the availability of the center and its workload, with the proposed activities being as follows:



*Receive specialized education in an institution that can offer you all these possibilities, with an innovative academic program and a human team that will help you develop your full potential"*



Module	Practical Activity
<b>Initial and advanced diagnostic approach</b>	Apply stepwise orthodontic diagnostics and follow up the patient during the treatment application
	Perform cephalometric analysis, with emphasis on 3D diagnostic techniques: CBCT y CT
	Evaluate the patient's habits, indicating changes in their routines to improve the effectiveness of treatment
<b>Specific management of malocclusions and dentofacial deformities</b>	Evaluate the patient's at-risk habits to determine early diagnoses
	Explore the craniofacial growth and development in the pediatric patient.
	Evaluate the pathophysiology of tooth eruption in patients between 6 and 8 years of age.
	Perform an analysis of growth and dentoalveolar adaptation in different malocclusions
<b>Approach of Early Dentofacial Orthopedics</b>	Assess and determine the differential diagnosis of etiological factors to avoid possible pathologies in the pediatric patient.
	Determine the need for early orthopedics by performing the early orthopedic procedure in the pediatric patient.
	Develop neuro-occlusal rehabilitation techniques in the pediatric patient to prevent pathologies of functional cause in the masticatory apparatus.
<b>Approach of late dentofacial orthopedics</b>	Apply treatments in deciduous and mixed dentition first phase.
	Apply orthodontic treatments in the permanent dentition patient
	Apply orthodontic treatments for anterior open bite, delving into the different existing types such as braces, clear aligners or incognito lingual orthodontics.
	Apply orthodontics for the treatment of overbite, through braces with elastic bands or clear aligners.
	Apply treatments of posterior crossbite and transverse problems using different types of orthodontics.

# 05

## Where Can I Do the Internship Program?

In order to ensure that the process of updating the professional is the most effective, TECH has selected the best clinical centers in which to carry out the on-site internships. During the period of the stay, the dentist will have access to the center's equipment and will be able to carry out numerous activities focused on the acquisition of new skills in this important and exciting health area.

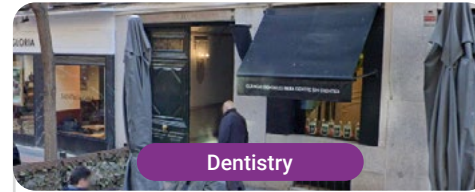
“

*TECH gives you the possibility to work out in the most prestigious centers to update yourself as a professional in a practical and immediate way, by the hand of the best specialists”*





The student will be able to do this program at the following centers:



Dentistry

### Buba Clínicas Dentales

Country	City
Spain	Madrid

Management: Calle Villanueva, 33 local derecha, Madrid 28001

Dental clinic expert in the promotion of oral health

**Related internship programs:**

- Oral Medicine
- Implantology and Oral Medicine



Dentistry

### Hospital HM Modelo

Country	City
Spain	La Coruña

Management: Rúa Virrey Osorio, 30, 15011, A Coruña

Network of private clinics, hospitals and specialized centers distributed throughout Spain.

**Related internship programs:**

- Anaesthesiology and Resuscitation
- Palliative Care



Dentistry

### Hospital Maternidad HM Belén

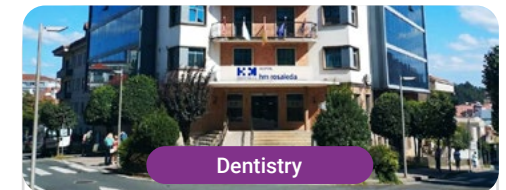
Country	City
Spain	La Coruña

Management: R. Filantropía, 3, 15011, A Coruña

Network of private clinics, hospitals and specialized centers distributed throughout Spain.

**Related internship programs:**

- Update in Assisted Reproduction
- Hospitals and Health Services Management



Dentistry

### Hospital HM Rosaleda

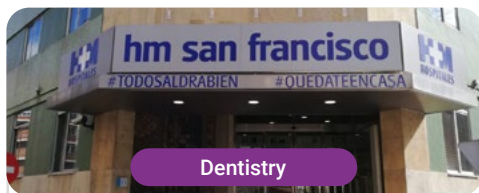
Country	City
Spain	La Coruña

Management: Rúa de Santiago León de Caracas, 1, 15701, Santiago de Compostela, A Coruña

Network of private clinics, hospitals and specialized centers distributed throughout Spain.

**Related internship programs:**

- Hair Transplantation
- Orthodontics and Dentofacial Orthopedics



Dentistry

### Hospital HM San Francisco

Country	City
Spain	León

Management: C. Marqueses de San Isidro, 11, 24004, León

Network of private clinics, hospitals and specialized centers distributed throughout Spain.

**Related internship programs:**

- Update in Anesthesiology and Resuscitation
- Nursing in the Traumatology Service



Dentistry

### Hospital HM Nou Delfos

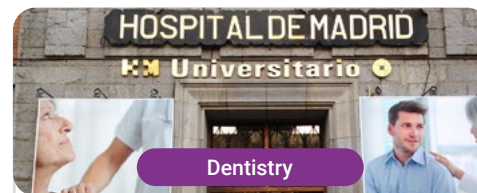
Country	City
Spain	Barcelona

Management: Avinguda de Vallcarca, 151, 08023 Barcelona

Network of private clinics, hospitals and specialized centers distributed throughout Spain.

**Related internship programs:**

- Aesthetic Medicine
- Clinical Nutrition in Medicine



Dentistry

### Hospital HM Madrid

Country	City
Spain	Madrid

Management: Pl. del Conde del Valle de Súchil, 16, 28015, Madrid

Network of private clinics, hospitals and specialized centers distributed throughout Spain.

**Related internship programs:**

- Palliative Care
- Anaesthesiology and Resuscitation



Dentistry

### Hospital HM Montepíncipe

Country	City
Spain	Madrid

Management: Av. de Montepíncipe, 25, 28660, Boadilla del Monte, Madrid

Network of private clinics, hospitals and specialized centers distributed throughout Spain.

**Related internship programs:**

- Palliative Care
- Aesthetic Medicine



Dentistry

### Hospital HM Torrelodones

Country	City
Spain	Madrid

Management: Av. Castillo Olivares, s/n, 28250, Torrelodones, Madrid

Network of private clinics, hospitals and specialized centers distributed throughout Spain.

**Related internship programs:**

- Anaesthesiology and Resuscitation
- Palliative Care



Dentistry

### Hospital HM Sanchinarro

Country	City
Spain	Madrid

Management: Calle de Oña, 10, 28050, Madrid

Network of private clinics, hospitals and specialized centers distributed throughout Spain.

**Related internship programs:**

- Anaesthesiology and Resuscitation
- Palliative Care



Dentistry

### Hospital HM Puerta del Sur

Country	City
Spain	Madrid

Management: Av. Carlos V, 70, 28938, Móstoles, Madrid

Network of private clinics, hospitals and specialized centers distributed throughout Spain.

**Related internship programs:**

- Palliative Care
- Clinical Ophthalmology



Dentistry

### Policlínico HM Arapiles

Country	City
Spain	Madrid

Management: C. de Arapiles, 8, 28015, Madrid

Network of private clinics, hospitals and specialized centers distributed throughout Spain.

**Related internship programs:**

- Anaesthesiology and Resuscitation
- Pediatric Dentistry



Dentistry

### Policlínico HM Cruz Verde

Country City  
Spain Madrid

Management: Plaza de la Cruz Verde, 1-3, 28807, Alcalá de Henares, Madrid

Network of private clinics, hospitals and specialized centers distributed throughout Spain.

**Related internship programs:**

- Advanced Clinical Podiatry
- Optical Technologies and Clinical Optometry



Dentistry

### Policlínico HM La Paloma

Country City  
Spain Madrid

Management: Calle Hilados, 9, 28850, Torrejón de Ardoz, Madrid

Network of private clinics, hospitals and specialized centers distributed throughout Spain.

**Related internship programs:**

- Advanced Operating Room Nursing
- Orthodontics and Dentofacial Orthopedics

# 06

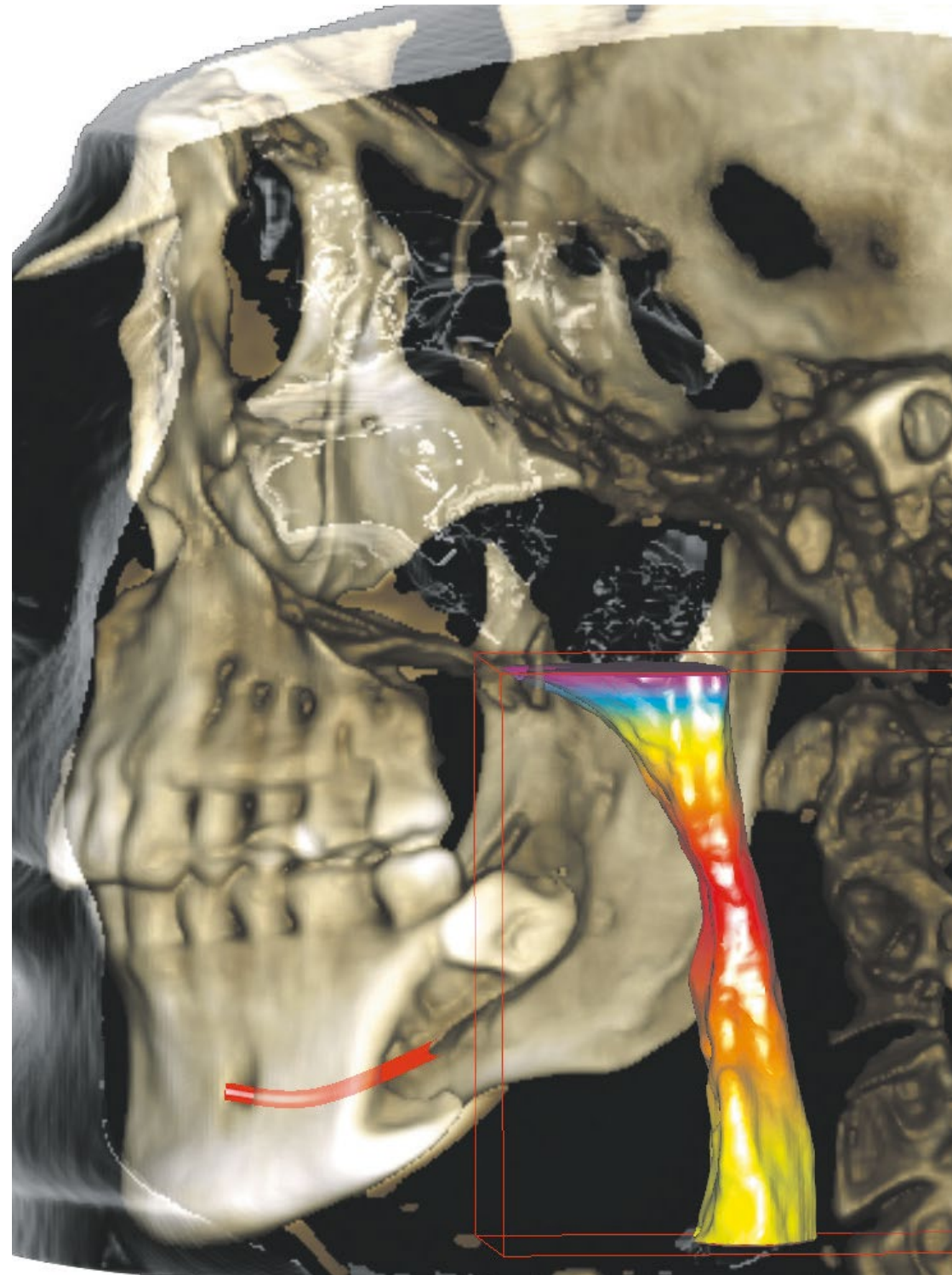
## General Conditions

### Civil Liability Insurance

This institution's main concern is to guarantee the safety of the trainees and other collaborating agents involved in the internship process at the company. Among the measures dedicated to achieve this is the response to any incident that may occur during the entire teaching-learning process.

To this end, this educational entity undertakes to take out civil liability insurance to cover any eventuality that may arise during the internship during the stay at the internship center.

This liability policy for interns will have broad coverage and will be taken out prior to the start of the practical training period. That way professionals will not have to worry in case of having to face an unexpected situation and will be covered until the end of the internship program at the center.





## General Conditions of the Internship Program

The general terms and conditions of the internship program agreement shall be as follows:

**1. TUTOR:** During the Internship Program, students will be assigned with two tutors who will accompany them throughout the process, answering any doubts and questions that may arise. On the one hand, there will be a professional tutor belonging to the internship center who will have the purpose of guiding and supporting the student at all times. On the other hand, they will also be assigned with an academic tutor, whose mission will be to coordinate and help the students during the whole process, solving doubts and facilitating everything they may need. In this way, the student will be accompanied and will be able to discuss any doubts that may arise, both clinical and academic.

**2. DURATION:** The internship program will have a duration of three continuous weeks, in 8-hour days, 5 days a week. The days of attendance and the schedule will be the responsibility of the center and the professional will be informed well in advance so that they can make the appropriate arrangements.

**3. ABSENCES:** If the students does not show up on the start date of the Internship Program, they will lose the right to it, without the possibility of reimbursement or change of dates. Absence for more than two days from the internship, without justification or a medical reason, will result in the professional's withdrawal from the internship, therefore, automatic termination of the internship. Any problems that may arise during the course of the internship must be urgently reported to the academic tutor.

**4. CERTIFICATION:** Professionals who pass the Internship Program will receive a certificate accrediting their stay at the center.

**5. EMPLOYMENT RELATIONSHIP:** The Internship Program shall not constitute an employment relationship of any kind.

**6. PRIOR EDUCATION:** Some centers may require a certificate of prior education for the Internship Program. In these cases, it will be necessary to submit it to the TECH internship department so that the assignment of the chosen center can be confirmed.

**7. DOES NOT INCLUDE:** The Internship Program will not include any element not described in the present conditions. Therefore, it does not include accommodation, transportation to the city where the internship takes place, visas or any other items not listed.

However, students may consult with their academic tutor for any questions or recommendations in this regard. The academic tutor will provide the student with all the necessary information to facilitate the procedures in any case.

# 07 Certificate

This **Internship Program in Dentofacial Orthopedics** contains the most complete and up-to-date program in the professional and academic landscape.

After the student has passed the assessments, they will receive their corresponding Internship Program diploma issued by TECH Technological University via tracked delivery\*.

The diploma issued by TECH will reflect the grade obtained in the test.

Title: **Internship Program in Dentofacial Orthopedics**

Duration: **3 weeks**

Attendance: **Monday to Friday, 8-hour consecutive shifts**

Total Hours: **120 h. of professional practice**



**tech**

Internship Program  
Dentofacial Orthopedics

# Internship Program

## Dentofacial Orthopedics



tech